

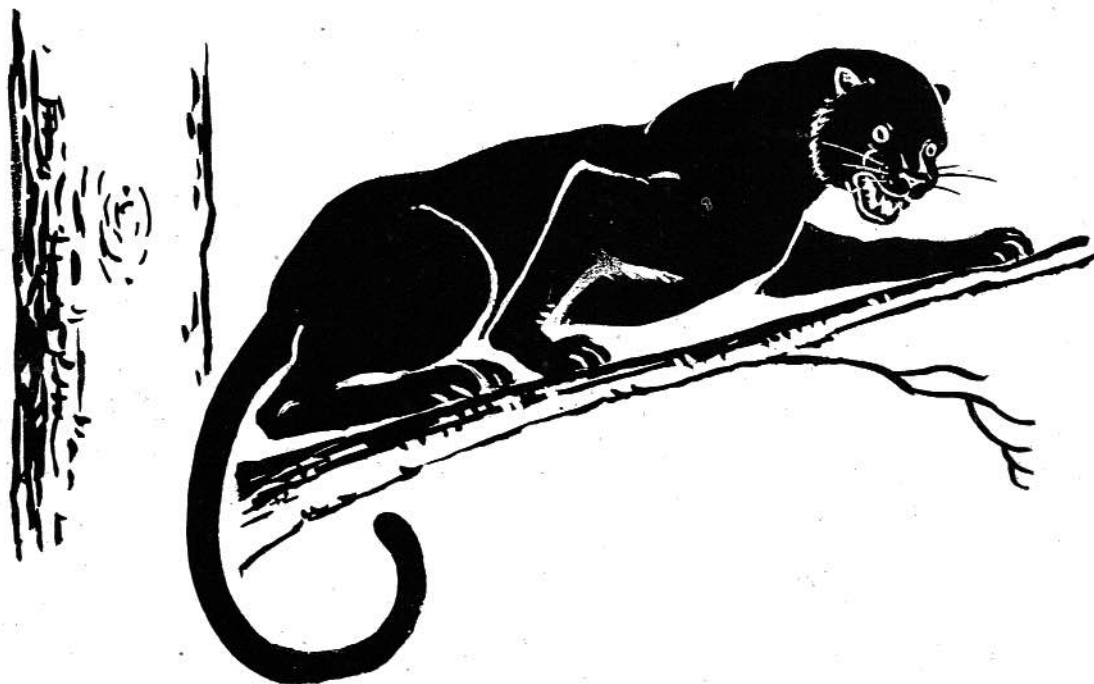


PANTHER  
*Sales*

1947

# PANTHER

# TALES



*Published By The*

**SENIORS**

*of*

**Stevenson High School**

**Stevenson, Alabama**

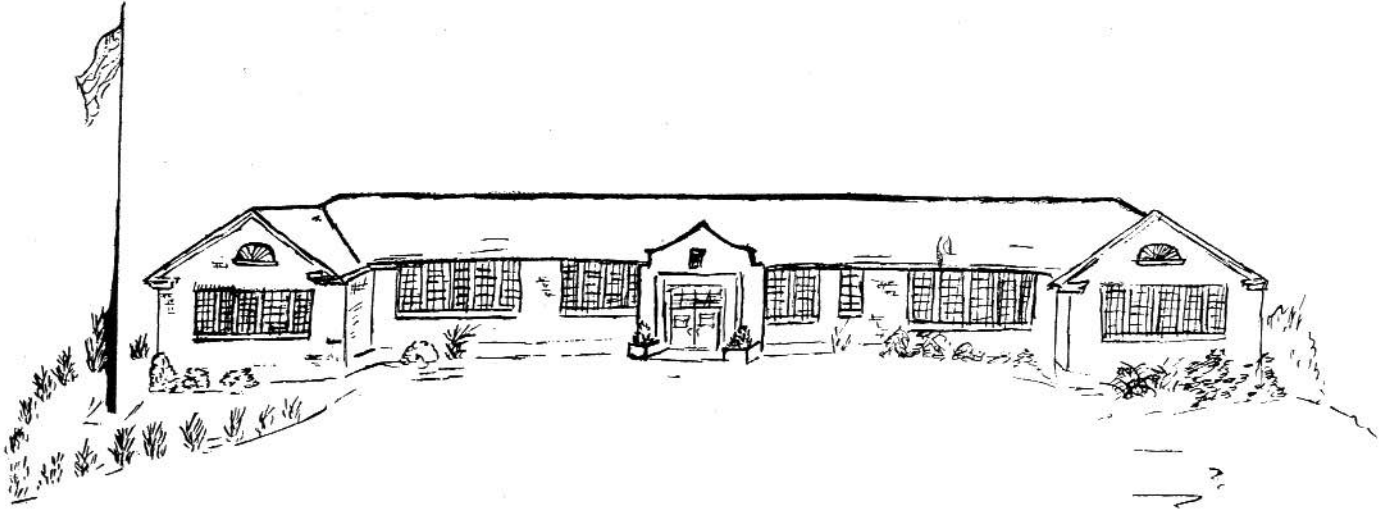
# Foreword---

*To you, the students and faculty of Stevenson High School, we present this year book. May it bring you a vivid picture of the year just ended and other school years that have been filled with much happiness and many friendships that will ever bring happy memories as you turn the leaves of this book.*

*“Forward, ever, be our watchword,  
Conquer and prevail,  
Hail to thee our Alma Mater,  
S. H. S., all hail!”*

*Long will these words linger in our hearts as we leave Stevenson High to face a world of chaos and the scars of a great world war.*





## DEDICATION

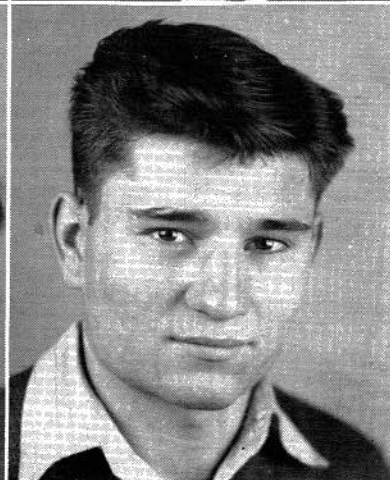
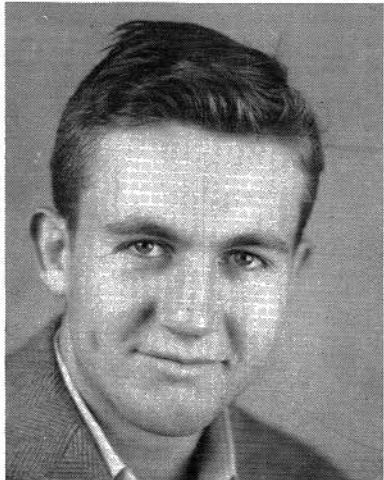
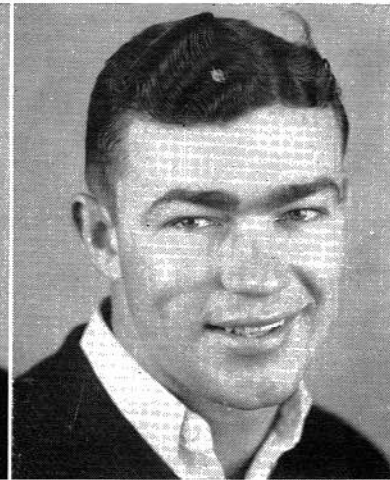
*Just as we, the graduating class of 1947 must look to the future and not dwell in the past, so must the nations of the war-torn world live for the future. We dedicate this Senior Edition not only to our brave men who died on the field of battle, but also to their ideals; a peaceful world with justice for every nation, every race, and every religion, and we, the future lawmakers of America dedicate ourselves to preserve their ideals, to keep the torch of liberty burning.*



Thomas

Colquette

Wright



Knox

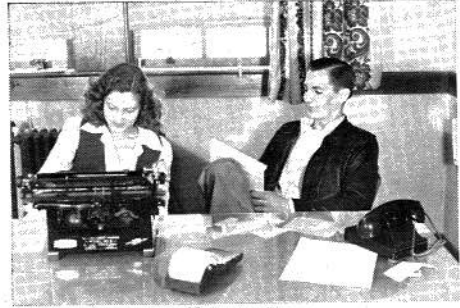
Davis

Guess

### The Staff

<i>Editor-in-Chief</i> .....	Walter Thomas
<i>Associate Editor</i> .....	Ferrell Colquette
<i>Business Manager</i> .....	Charles H. Loyd
<i>Ass't. Business Manager</i> .....	Jeannine Bell
<i>Miscellaneous Editor</i> .....	Louise Colquette
<i>Ass't. Misc. Editor</i> .....	Kitty Pittman
<i>Advertising Manager</i> .....	Neil Knox
<i>Ass't. Advertising Manager</i> .....	Alice Timberlake
<i>Ass't. Advertising Manager</i> .....	David Guess
<i>Art Editor</i> .....	Betty Jo Mattox
<i>Ass't. Art Editor</i> .....	Rosemary Hackworth
<i>Ass't. Art Editor</i> .....	Glenn Allison
<i>Senior Editor</i> .....	Lucille Gamble
<i>Junior Editor</i> .....	Billie Lee Rash
<i>Sports Editor</i> .....	Granville Goforth
<i>Ass't. Sports Editor</i> .....	Sybil Ballard
<i>Ass't. Sports Editor</i> .....	Tommy Wright
<i>Typist</i> .....	Betty Ann Dolberry
<i>Typist</i> .....	Edith Mae Vinson
<i>Typist</i> .....	Loeta Mathews Davis
<i>Faculty Adviser</i> .....	Mr. Borden
<i>Faculty Adviser</i> .....	Mrs. Holder
<i>Faculty Adviser</i> .....	Mrs. Blakely
<i>Faculty Adviser</i> .....	Mrs. Coffey

# The Staff at Work



Pittman and Colquette

Loyd and Bell

Ballard and Goforth

Timberlake

Hackworth, Mattox and Allison

Dolberry and Vinson

Rash and Gambel



# FACULTY

A. H. Borden  
*Principal*



Mrs. Mattie C. Pittman  
Algebra, Geometry, Chemistry, Physics,  
Biology

Mrs. Loyce H. Holder  
English



Mrs. Anne G. Coffey  
English, Social Studies

Mrs. Marion B. Blakeley  
Commerce



Miss Bessie Sanders  
General Business, English, Social Studies,

Carl Rudder  
Mathematics, Social Studies,  
Physical Education



Miss Emily Smith  
Home Economics

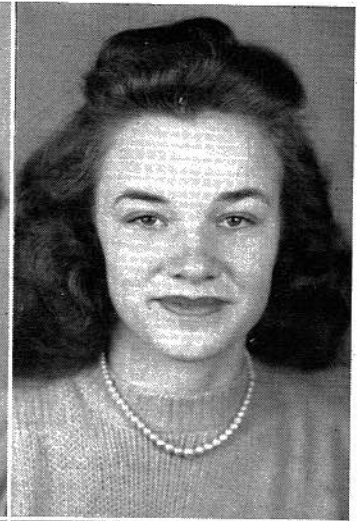
C. D. Richardson  
Agriculture

# SENIOR CLASS OF '47

## Class Officers

Irene Gamble— *President*

"*Trixie*"—4-H Club, '41-'45; F. H. A. Secretary, '46; F. H. A. President, '47; Campus Personality, '47.

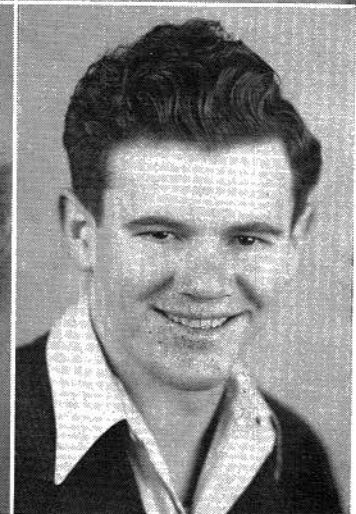


Bettye Ann Dolberry—*Vice-Pres.*

"*Butch*"—Annual Staff, '47; 4-H Club '41-'45; Junior Play, '46; Campus Personality, '47; Carnival, '45, '46, '47; Negro Minstrel, '47.

Lucille Gamble— *Sec.-Treas.*

"*Gabby*"—Annual Staff, '47; 4-H Club, '41-'45; F. H. A., '46, '47; F. H. A., President, '46; Class Secretary, '46, '47; D. A. R. Citizenship, '47; Junior Play, '46.

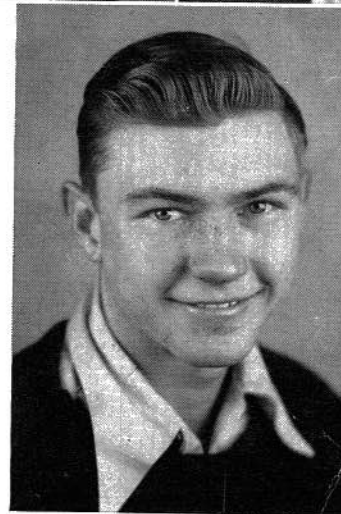


George Foshee— *Song Leader*

"*Gnat*"—Football, '42, '43, '44, '47; Alt. Captain Football, '43; Basketball, '42, '43, '44, '47; Carnival, '46; Senior Minstrel, '47; Veteran of World War II.

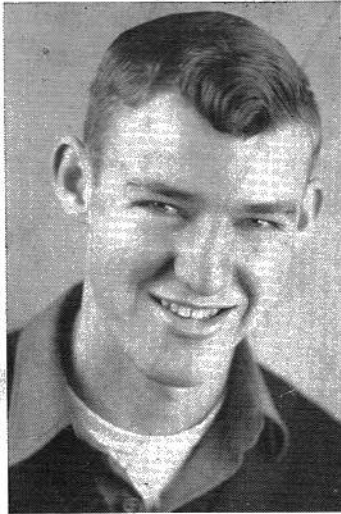
Glenn Allison— *Song Leader*

Football, '44-'46; Song Leader, '45-'47; Senior Minstrel, '47; Carnival, '45; F. F. A., '45, '46; Junior Play, '46; Annual Staff, '47.



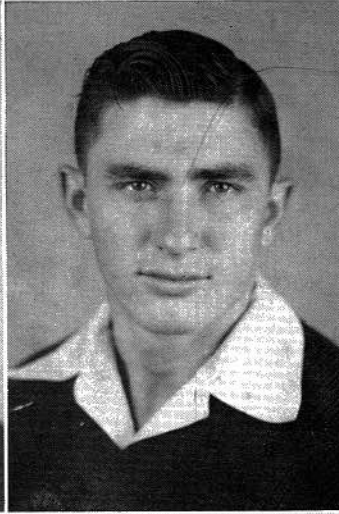


## Senior Class of '47



**Benny Jack Allison**

"*Iron Ore*"—4-H Club, '41-'45; F. F. A. '45-'47; Watch Dog F. F. A.; Football, '45-'47; Campus Personality, '47.



**Earl Allison**

"*Bobby*"—4-H Club, '40-'46; F. F. A., '47; Football, '42, '43, '46; Alt. Captain, '44; Basketball, '42, '43; Mr. Stevenson, '46; Carnival, '46; Senior Minstrel, '46; Veteran of World War II.



**Jimmie Allison**

Adv. Manager of *Gree-Co-Ala.*; Pres. of Senior Class, Eutaw, Ala.; Pres. of Senior I Class; Winner of 23 Circle Oratorical Contests.



**Sallye Ruth Allison**

"*Babe*"—4-H Club, '40-'45; F. H. A., '45-'47; Carnival, '45; Senior Minstrel, '46.



**Sybil Ballard**

"*Snooks*"—Assistant Sports Editor of *Panther Tales*, '47; Cheer Leader, '45, '46; 4-H Club, '42, '45; F. H. A., '46; Carnival, '44-'46; Negro Minstrel, '46; Campus Personality, '47.



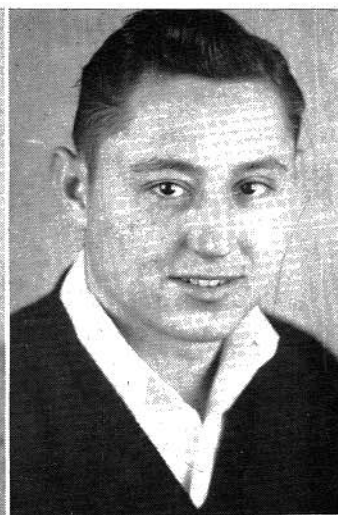
**Jeannine Bell**

Assistant Business Manager of *Panther Tales*, '47; 4-H Club, '43-'46.

## Senior Class of '47

### John Charles Blevins

"Dizzy"—4-H Club, '41, '45; F. F. A., '45-'47; Secretary of F. F. A.; Football, '46-'47; Basketball, '46, '47; Junior Play, '44, '45, '46, '47; Carnival, '44, '45, '46; Campus Personality, '47.



### Ferrell Colquette

"Pork Chops"—Assistant Editor of *Panther Tales*, '47; Football, '40, '41, '46; Basketball, '40, '41, '46, '47; Carnival, '46; Veteran of World War II.

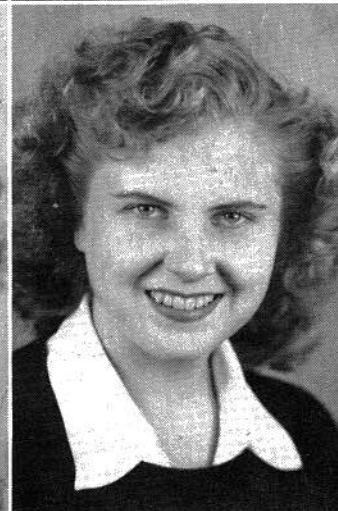


### Louise Parsons Colquette

"Shortie"—Misc. Editor of *Panther Tales*, '47; 4-H Club, '43-'45; F. H. A., '46; Class Reporter, '44; Junior Play, '46; Carnival, '44, '46; Song Leader, 4-H Club, '44; Campus Personality, '47; Senior Minstrel, '46.

### Loeta Matthews Davis

"Eta"—Typist for *Panther Tales*, '47; 4-H Club, '41-'44; F. H. A., '46, '47; Vice-President F. H. A. '46, '47; Junior Play, '46.



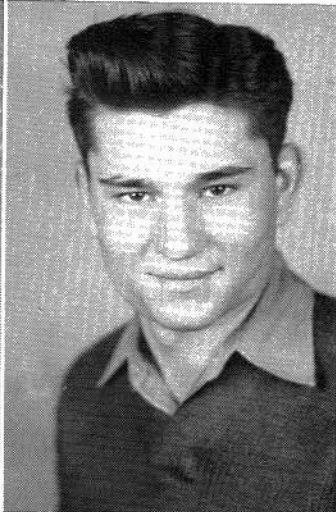
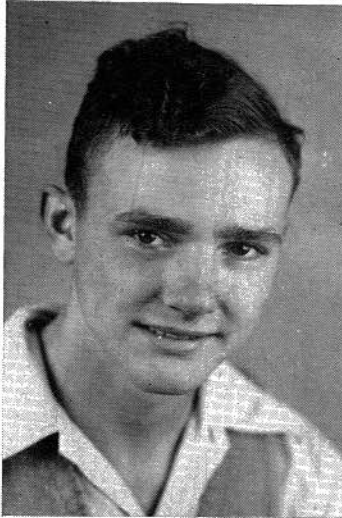
### Mabel Fare

"Dump"—4-H Club, '41-'46; State Health Winner, '44; 4-H Club Queen Attendant, '44; 4-H Club Pres., '44; Representative of Stevenson High School at Inauguration of Governor Folsom, '47; Class President, '43, '44; Victory Queen, '44; Cheerleader, '44-'46; Carnival, '44-'46.

### Jayne Evans Foshee

4-H Club, '41-'44; 4-H Club Song Leader, '43; F. H. A., '45; Cheerleader, '46, '47; Senior Minstrel, '46; Carnival, '46.

## Senior Class of '47

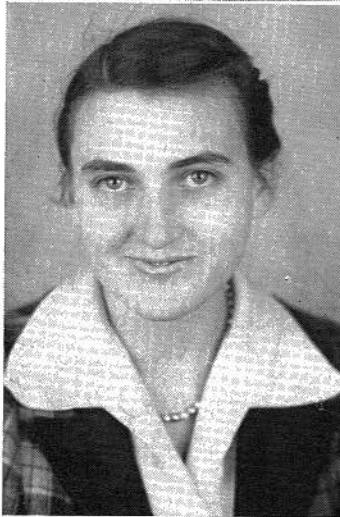


Granville Goforth

"Cross the River"—F. F. A., '45, '46; F. F. A. Treasurer, '45, '46; Football, '46, '47; Class President, '43, '44; Jr. Play, '46; Campus Personality, '47; Sports Editor of *Panther Tales*, '47

David Guess

"Guess 'O'"—Assistant Advertising Manager for *Panther Tales*, '47; Football, '45, '46, '47; Basketball, '44-'47; 4-H Club, '41-'45; F. F. A., '45-'47; Junior Play, '46; Senior Minstrel, '46; Campus Personality, '47.



Reece Guess

4-H Club, '43-'45; F. H. A., '46, '47; Senior Minstrel, '46; Music Class, '45-'47.

Earl Guinn

"Carrot"—Football, '42, '43, '46; 4-H Club, '42; Veteran of World War II.



Rosemary French Hackworth

"Clem"—Associate Art Editor of *Panther Tales*, '47; 4-H Club, '43-'45; Carnival, '44, '45; Music Class, '46, '47; Dance Class, '45-'47.

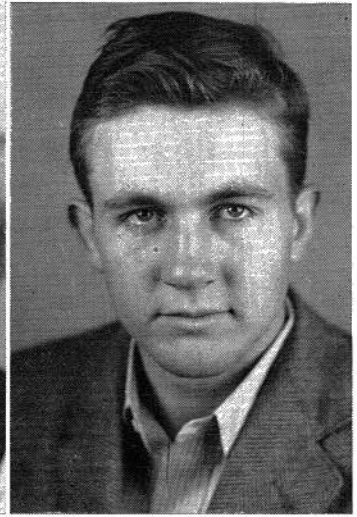
Billie Sue Innis

"Susan"—4-H Club, '44, '45; F. H. A., '45, '46; Music Class, '46, '47; Dancing Class, '46, '47; Senior Minstrel, '46.

## Senior Class of '47

### Virginia Kirk

"*Johnnie*"—4-H Club '41-'44; F. H. A., '45, '46; Senior Minstrel, '46.



### Neil Knox

"*Old Man*"—4-H Club, '41-'44; Advertising Manager of *Panther Tales*, '47; F. F. A., '46, '47; Football, '44-'46; Junior Play, '46; Carnival, '46; Senior Minstrel, '46; Campus Personality, '47.

### Grace Lancaster

"*Nello*"—4-H Club, '41-'44; F. H. A., '45, '46; Music Class, '41-'47.



### Charles Harold Loyd

"*Bo*"—Business Manager of *Panther Tales*, '47; Football, '44, '45; Basketball, '44, '47; 4-H Club, '41-'47; Vice-President of 4-H Club, '42; President of 4-H Club, '45; Secretary of 4-H Club, '45; Vice-President of F. F. A., '46, '47; County Council President; 4-H Club President, '45; Junior Play, '46; Campus Personality, '47; Senior Minstrel, '46.

### Betty Joe Mattox

"*Betts*"—Art Editor of *Panther Tales*, '47; Cheerleader, '45, '46; F. H. A., '46; Carnival, '44-'46.



### Odessa Morris

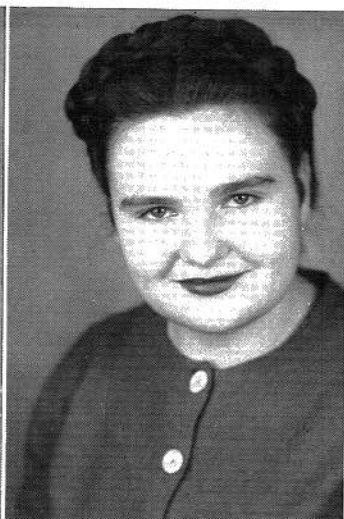
"*Blondie*"—4-H Club, '41-'44; F. H. A., '45, '46; Treasurer of F. H. A., '46, '47; Senior Minstrel, '46; Campus Personality, '47; Music Class, '43-'46.

## Senior Class of '47



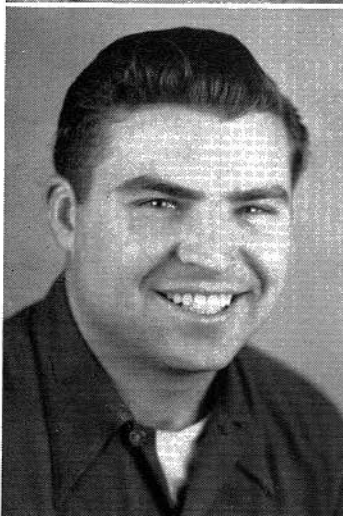
Opal Peters

4-H Club, '41-'44; F. H. A., '46; Campus Personality, '47.



Kitty Lou Pittman

"Kitty"—4-H Club, '41-'44; Vice-President 4-H Club; F. H. A., '45; President of Class, '45, '46; Football Queen, '45; Assistant Misc. Editor for *Panther Tales*, '47; Junior Play, '46; Carnival, '44-'46; Senior Minstrel, '46; Campus Personality, '47; Negro Minstrel, '46; Music Class, '42-'47.



Fred Powers

"Big Stoop"—4-H Club, '41; Football, '40, '41, '46; Senior Play, '46; Campus Personality, '47; Veteran of World War II.



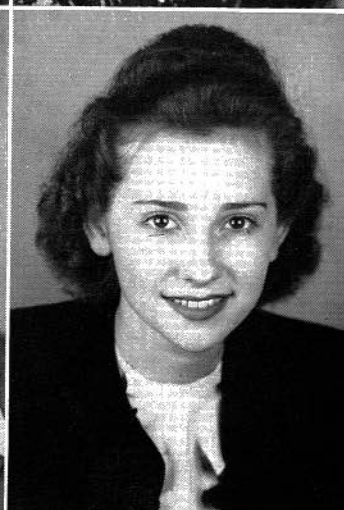
Velma Mecker Prichett

"Slim"—F. H. A., '45, '46.



John Billy Prickett, Jr.

4-H Club, '41-'47; F. F. A., '46, '47; Football, '45, '46; Junior Play, '46.



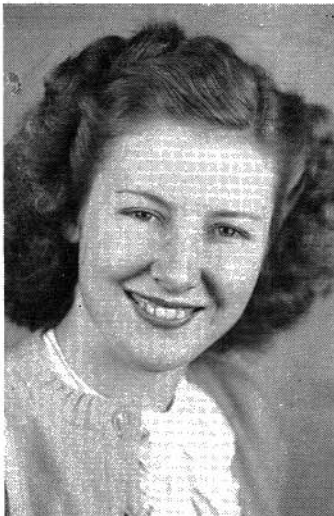
Carolyn Prince

"Curley"—4-H Club, '41-'44; F. H. A., '46; Cheer Leader, '45; Vice-President of Class, '45; Miss Stevenson, '46; Carnival, '46; Campus Personality, '47.

## Senior Class of '47

### Billie Lee Rash

"Bitsie"—Junior Editor of *Panther Tales*, '47; 4-H Club, '45-'47.



### C. E. Steele

Veteran of World War II.

### Alice Timberlake

Assistant Advertising Salesman for *Panther Tales*, '47; 4-H Club, '41-'47; Junior Play, '46; Negro Minstrel, '46.

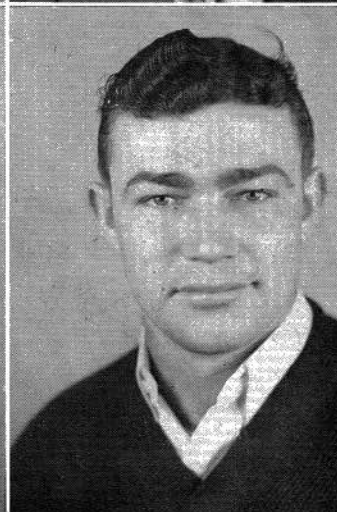


### Walter Thomas

Editor-in-Chief of *Panther Tales*, '47; Cheer Leader, '44-'46; Carnival, '44-'46; Minstrel, '46; Campus Personality, '47; Music Class, '41-'47; Senior Minstrel, '46.

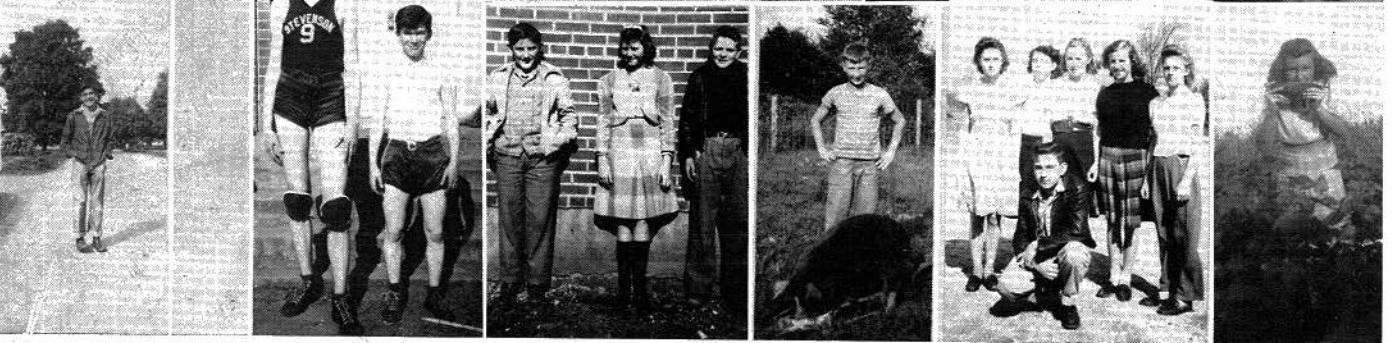
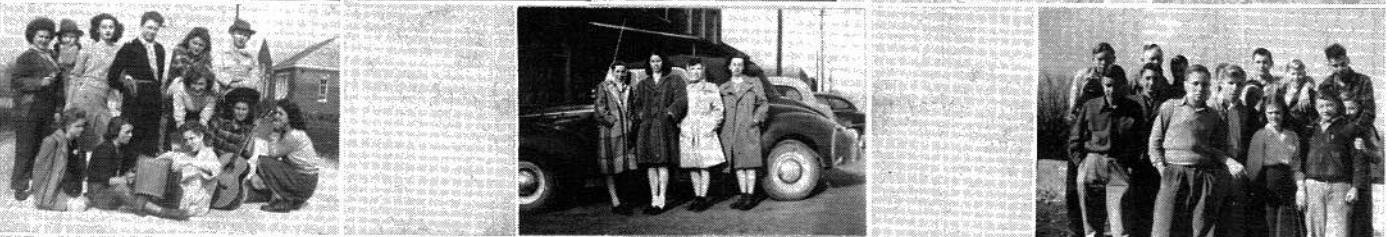
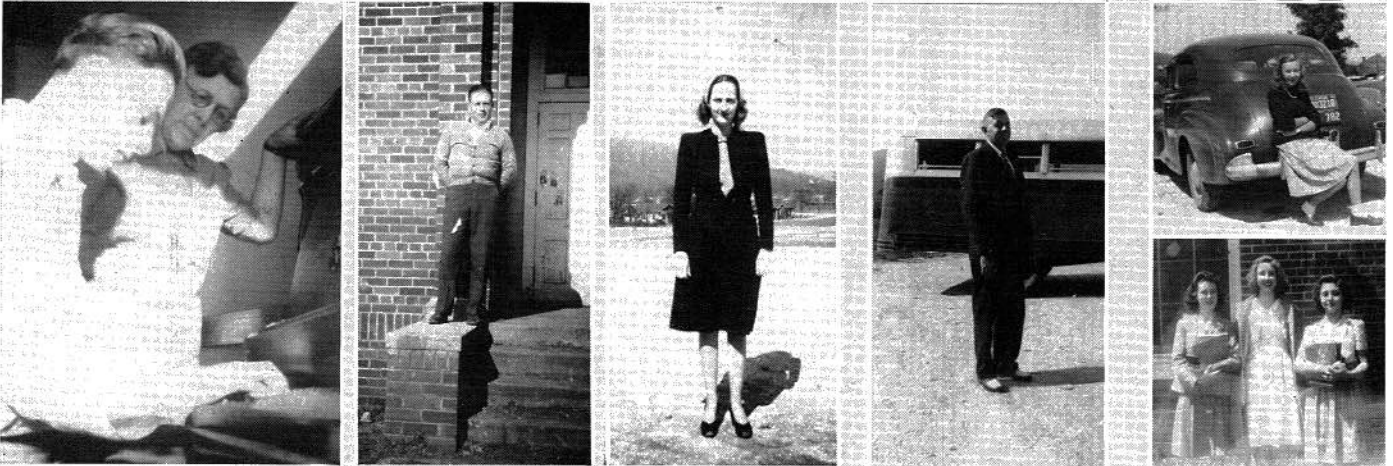
### Edith Mae Vinson

4-H Club, '41-'45; F. F. A., '46, '47. Typist for *Panther Tales*, '47.



### Tommy Wright

"Daddy"—Assistant Sports Editor for *Panther Tales*, '47; 4-H Club, '40, '41; Football, '39, '40, '41, '46; Football Captain, '41; Basketball, '40, '41, '45, '46, '47; Carnival, '47; F. F. A., '46; Campus Personality, '47; Veteran of World War II.





## Senior Two Class

### CLASS OFFICERS

<i>President</i> .....	Roy Ballard
<i>Vice-President</i> .....	Harold Holder
<i>Secretary</i> .....	Edna Brown
<i>Sponsor</i> .....	Mrs. Coffey

### CLASS ROLL

Billie Joe Allison, James Angle, Harry W. Arnold, Roy Ballard, Billy Bean, Billy Blount, Edna Brown, James Cameron, Mable Fare, Clyde Foshee, Bettye Zane Hall, Grady Holder, Harold Holder, Thelma Sue Holder, Virginia Keller, Hoyt Lancaster, Robert Long, Leota Parton, Anne Pittman, Myrtle Ann Roach, J. B. Steele.





## Senior One Class

### CLASS OFFICERS

*President*.....Evelyn Taylor  
*Vice-President*.....Mary Lou Thomas  
*Secretary*.....Alvin Wright  
*Song Leaders*.....Jean Shirley and Vernon Smith  
*Reporter*.....Elizabeth Grimmett  
*Sponsor*.....Mr. Rudder

### CLASS ROLL

Howard Anderson, Betty Louise Arnold, Josephine Arnold, George Bean, Mary Lou Cates, Charlotte Cloud, Elizabeth Grimmett, Bobbie Jean Haswell, Fred McAllister, Faye McCrary, Leroy McCrary, Edward Morris, Ruby Peters, William Lee Roberts, Bessie Rogers, Hilda Jean Shirley, Elmer Smith, Jr.; Luther Smith, Vernon Smith, James F. Stephens, Evelyn Taylor, Jere Ben Thomas, Mary Lou Thomas, Katie Thornton, Betty Troxell, Glyndon Willis, Nancy Willis, Alvin Wright.



## Junior Three Class

### CLASS OFFICERS

<i>President</i> .....	Betty Ann Baker
<i>Vice-President</i> .....	Gene Campbell
<i>Secy.-Treas.</i> .....	Helen Allison
<i>Song Leader</i> .....	Charlsie Thornton Terry
<i>Sponsor</i> .....	Mrs. Pittman

### CLASS ROLL

David Allison, Forrestine Allison, Helen Allison, Ruth Angle, Don Arnold, Betty Ann Baker, Bertha Mae Barnes, Betty Lou Carroll Bean, Imogene Bean, Emma Jean Blevins, Bobby Blount, Hal A. Bradford, Tom Bradford, Mary Catherine Bramblett, Jo Ellen Brown, Edith Burton, Gene Campbell, Jimmy Caperton, W. L. Edwards, O. A. Holder, Wilma Pearl Houser, William Lee, G. C. Mason, Annie Ellen Matthews, Imogene Matthews, Peggy Pearson, Una Kate Peters, Norma Jean Pittman, Edith Precise, Bobbie Prichett, Willie B. Privett, Betty Carolyn Russell, Bobby Russell, Lamar Sentell, Billy Hugh Steele, June Steele, Betty Anne Stevens, Charles Stubblefield, Pauline Stubblefield, Katherine Talley, Louise Talley, Charlsie Thornton Terry, Ollie Mae Thomas, Jimmie Timberlake, Jack Wann, Junior Wright, Saphronia Gardner Wright.



## Junior Two Class

### CLASS OFFICERS

<i>Presidents</i> .....	Dora Barnes and Vernon Grider
<i>Vice Presidents</i> .....	Margaret Adams and Patty Bowles
<i>Secretaries</i> .....	Martha Wise and Alline Steele
<i>Sponsors</i> .....	Miss Sanders and Mrs. Blakeley
<i>Treasurers</i> .....	Benny Joe Cameron and Alline Steele



### CLASS ROLL

Margaret Adams, Pauline Allen, John Allen, Pearl Allen, Caroline Allison, Ruth Barbee, Dora Barnes, Betty Joe Bean, Jimmy F. Bell, Patty Bowles, Edward Brown, Benny Joe Cameron, Jane Caperton, Helen Carlton, Betty J. Cates, Ted Cloud, Howard Crawford, Hazel Curtis, Mack Gamble, R. V. Garner, Vernon Grider, Sam Guess, Carl Guess, Ruby Guffey, Maxine Haswell, Bill Holder, Edna Kirk, Nellie Lee, Carl Mason, Rena Matthews, Clyde Matthews, Charles Matthews, Virgie Moore, Dewey McAllister, Mary E. McCrary, Glenonard McDonald, Katherine Perkins, James Roberts, Stella Mae Robertson, Johnny Rudder, Henry Russell, Charles Lee Stallings, Aliene Steele, Freda Steele, Frances Smith, Betty F. Smoot, Marshall Taylor, Donald Terry, Billy Thomas, Maudie Thornton, Billy Vinson, Emma Vinson, George L. Wilkinson, Betty Ann Williams, Charles Willis, Pete Willis, Martha Wise.



## Junior One Class

### CLASS OFFICERS

*President*.....Billy Jack Loyd  
*Vice-President*.....David Smith  
*Sec. and Treas.*.....Frances McMahan  
*Sponsors*.....Miss Smith and Mr. Richardson



### CLASS ROLL

Mabel Lene Allen, Calvin Allen, J. L. Allison, Mack Allison, Elsie Anderson, James Batey, Nina Berryhill, Mary Elizabeth Blevins, Eva Bell Blevins, Ruby Gene Blizard, Kenneth Brooks, Mabel Bunch, Doris Jean Burton, Norma Lee Cargile, Hazel Clark, Franklin Coffman, Lillian Gass, Elawie Gilliam, Mildred Gilliam, Willa Dean Greene, Ethel Irene Guess, Roy Calvin Guess, Carthell Guess, James Guess, Melvin Guinn, Robert Hicks, Betty Louise Hill, Reba Jean Hodge, Stanley Holder, Juanita Houser, Betty Mae Johnson, Sanford Lancaster, Billy Hugh Long, Marie Mason, Shirley Mattox, Marvin Meeker, Woodrow Moore, Francis Reid McMahan, Una Rae McCrary, Edna Ruth Peters, Betty Pearson, George Powell, Nancy Louise Precise, Earline Prichett, Lorraine Reynolds, Elbert Roberts, Margaret Elizabeth Roberts, Betty Jo Rogers, James Ed Rudder, Alvin Sartin, Elizabeth Sizemore, Kathleen Sizemore, David Smith, Franklin Smith, Mary Alice Stallings, Mary Ellen Steele, Mary Elizabeth Summers, Mary Lou Summers, John Tarbush, Letha Ellen Tate, Betty Ruth Thomas, Ella Ruth Thomas, Arthur Jo Toney, Grace Louise Wright, Eugene Wooden, Billy Wooden, Jr.

## Future Homemakers of America



### F. H. A.

*Sponsor:* Miss Smith

*Front Row:* Annie Ellen Matthews, June Steele, Mary Catherine Bramblett, Imogene Beane, Bettye Lou Carroll Bean, Forestine Allison, Peggy Pearson.

*Second Row:* Edith Mae Vinson, Irene Gamble, June Roach, Virginia Keller, Bobby Jean Haswell, Emma Jane Blevins, Pauline Stubblefield, Miss Smith.

*Third Row:* Grace Nell Lancaster, Edna Brown, Bessie Rogers, Imogene Matthews, Faye McCrary, Evelyn Taylor, Bettye Louise Arnold.

*Fourth Row:* Odessa Morris, Lucille Gamble, Sue Holder, Sallie Ruth Allison, Velma Meeker Prichett, Leota Partin, Virginia Kirk.

# Future Farmers of America



## F. F. A.

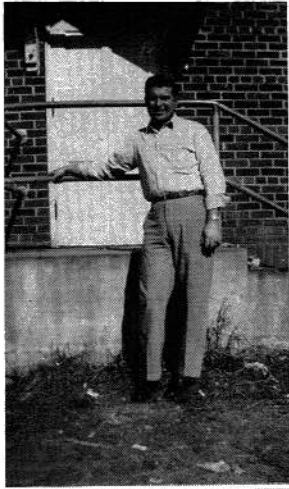
*Sponsor: C. D. Richardson*

*Front Row: David Guess, Thomas Wright, William Lee, Bobby Russell, Bobby Blount, G. C. Mason, Don Arnold.*

*Second Row: Billy Hugh Steele, Neil Knox, Leroy McCrary, Jack Wann.*

*Third Row: Glenn Allison, David Allison, Granville Goforth, Charles Loyd, John Blevins, Jimmy Caperton, Benny Jack Allison.*

# CAMPUS



*"Glamour Boy"*

*"I'm The Cutest One"*

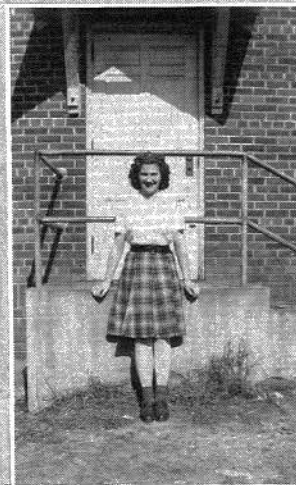
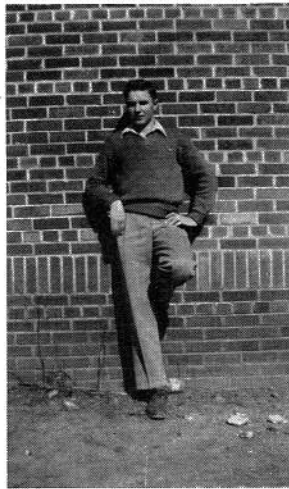
*"We Really Get Around"*

*"See How Cute I Am"*

*"That Oxydol Sparkle"*

*"Charles Atlas Gets Results"*

*"Our Little Book-Worms"*



# PERSONALITIES

*"Gorgeous Gal"*

*"Pick Of The Pack"*

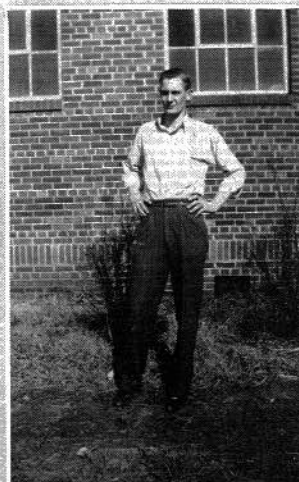
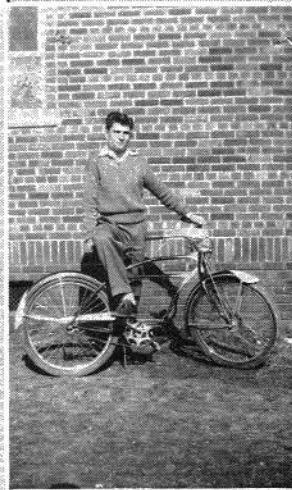
*"We Keep 'Em Smiling"*

*"Heart-Throb of S. H. S."*

*"Personality Plus"*

*"The Sky's The Limit"*

*"She Has The Cutest  
Personality"*







## Veterans' Organization

*Sponsor:* Carl Rudder

*Front Row:* Robert Long, Earl Allison, Thomas Wright.

*Back Row:* C. E. Steele, Fred Powers, Carl Rudder, Ferrell Colquette, James Cameron, George Foshee, David Guess, Earl Guinn.



PRESENTING  
MR. AND MISS STEVENSON HIGH!

Earl Allison

Carolyn Prince



FOOTBALL ROYALTY AND INAUGURAL REPRESENTATIVE

*Representative for the*  
INAUGURATION OF GOVERNOR FOLSOM,  
JANUARY 20, 1947  
Mabel Fare

1946 FOOTBALL QUEEN  
Charlsie Terry

# A DAY IN S. H. S.



Typing Class  
Biology  
Shop

Physics Class  
Cafeteria  
Home Economics

# Athletics

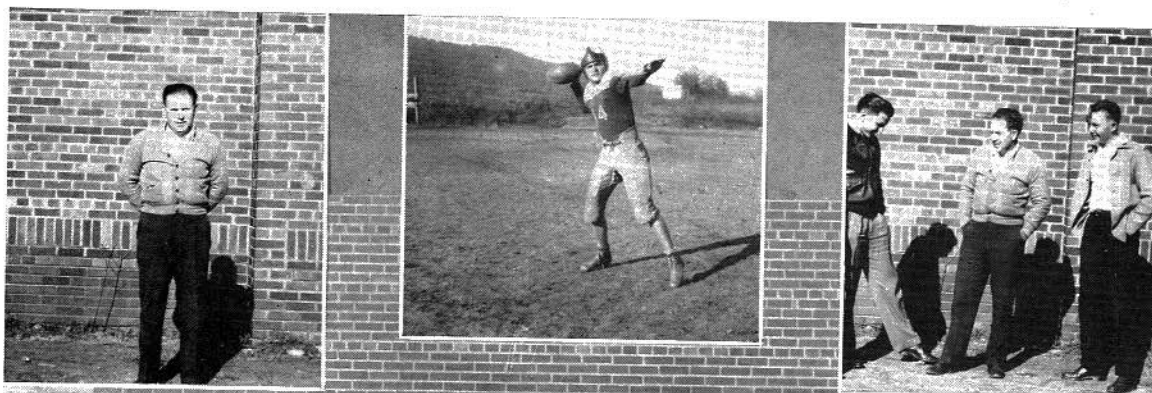


11

"Sap"

Captain Morris

Cameron, Coach, Willis



Front Row: G. Allison, Colquette, Terry, Guess, Powers Bean, Mgr. Arnold, Foshee, Mgr. Foshee, Wright, Willis, Goforth, B. Allison, Holder.  
 Back Row: C. Guess, M. Guinn, Russell, D. Allison, Smith, Knox, E. Allison, E. Guinn, Tony, W. Arnold, S. Guess.



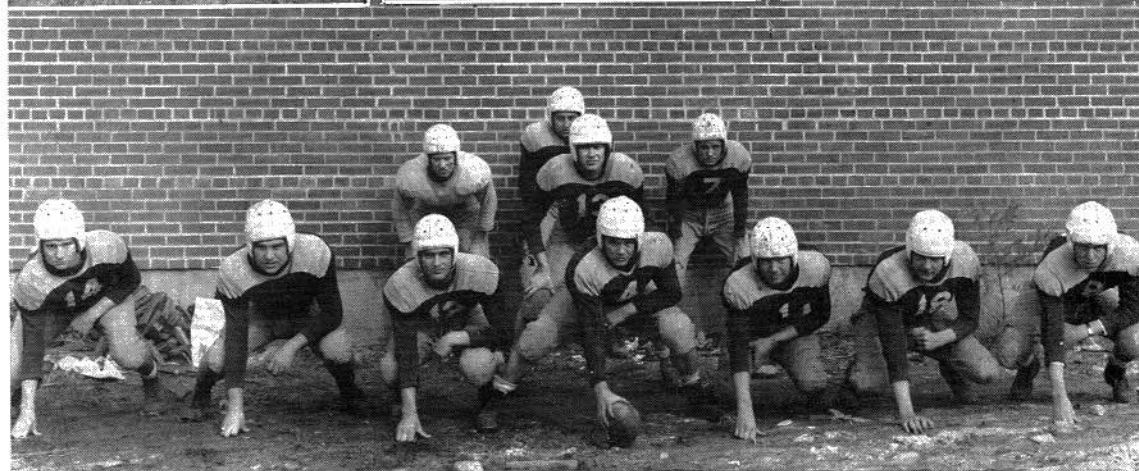
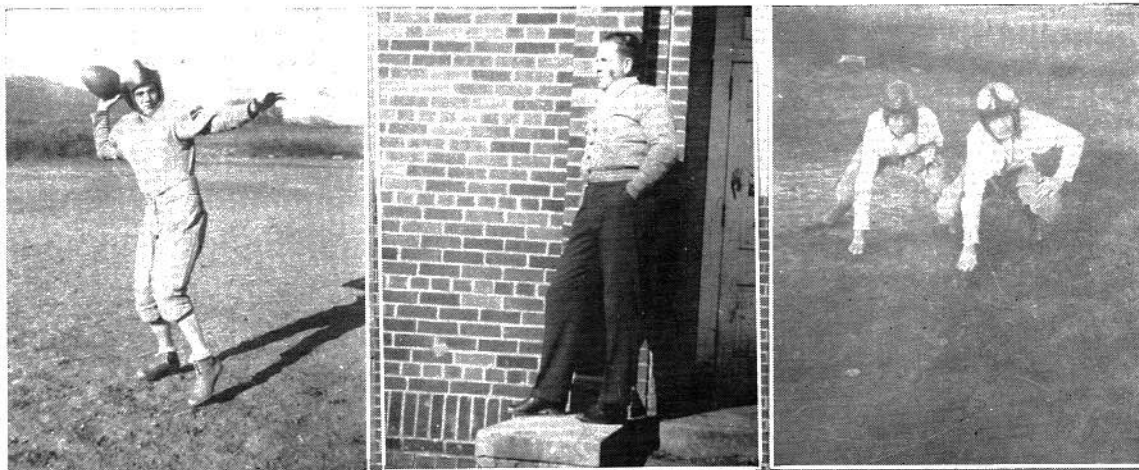
FOOTBALL SCHEDULE 1946

0 Gurley High (B Team).....	SHS 31
6 Gurley High.....	SHS 0
13 Redbank High.....	SHS 12
7 Winchester High.....	SHS 0
12 Albertville High.....	SHS 0
0 Tyner High.....	SHS 18
0 Jasper High.....	SHS 6
7 So. Pittsburg High.....	SHS 0
27 Scottsboro High.....	SHS 6
13 Blountsville High (B Team).....	SHS 6
0 Bridgeport High.....	SHS 14

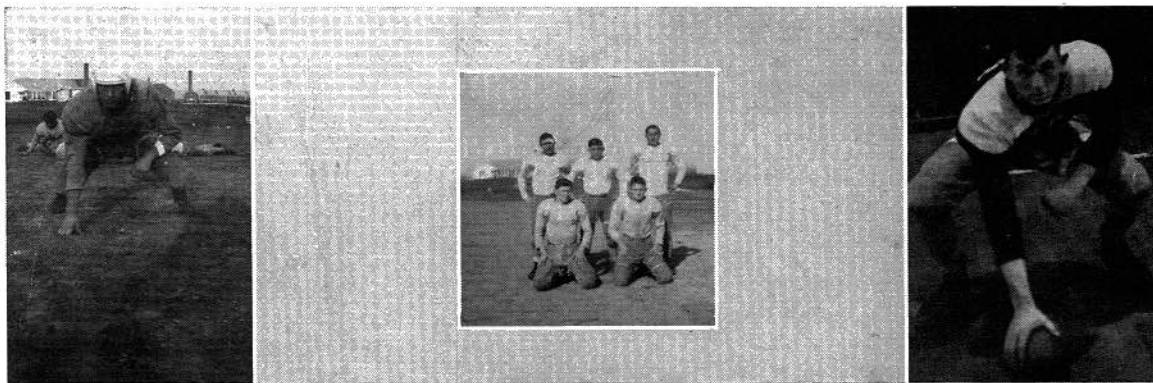
George Foshee

Coach Steele

J. Blevins and R. Ballard



Front Row: Guess, Powers, Bean, Foshee, Willis, Goforth, Allison.  
 Middle Row: Wright.      Back Row: Terry, Colquette, Holder.



Glenn Allison

Front Row: Ballard, Allison.  
 Back Row: Wright, Holder, Col-  
 quette.

"Corky" Allison

# Basketball

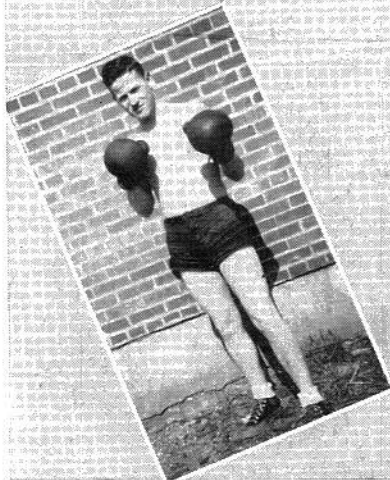
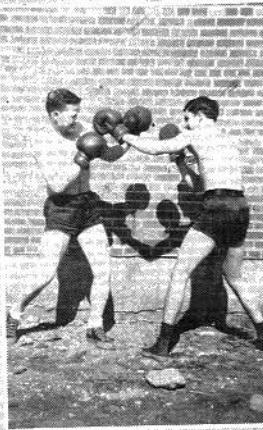
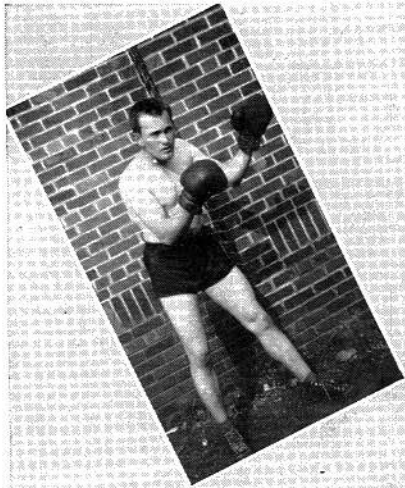


A—*Right Forward*: Ballard  
 B—*Center*: Loyd  
 C—*Left Forward*: Colquette  
 D—*Left Guard*: Steele  
 E—*Coach*: Rudder  
 F—*Right Guard*: Guess

G—*Mrs.* Arnold and Foshee  
 H—*Coach* Rudder, Angle, Taylor,  
 Sentell, Stallins, Rudder, D.  
 Smith, Foshee, F. Smith.

I—Stevens and Roberts

# Boxing



Steele  
Terry

Terry and Stubblefield

Stubblefield  
Cameron





# Goin's on at S. H. S.



A—Senior Officers

B—Ugh, it's Interesting

C—The Gyp Joint

D—Too Much Garbage

E—They Couldn't Wait

F—Which is Which?

G—Sr. Min-strel Cast

H—"?" ?"

I—Fast Workers!

J—F. H. A. Initiation

K—Minstrel Sextet

L—Jr. Play Cast, '46

COMPLIMENTS OF

**FIRST NATIONAL  
BANK**

STEVENSON, ALABAMA

Chickamauga Cedar  
Company

Cedar Closet Lining  
Hardwood Floor Manufacturers

STEVENSON, ALABAMA

**Bell's Store**

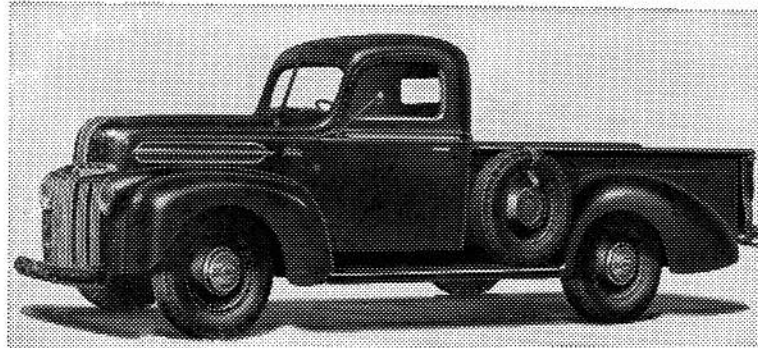
*General Merchandise*

J. F. Bell

There's a  in your future!

## HARBIN MOTOR COMPANY

SCOTTSBORO,  
ALABAMA



## L. H. Hughes Furniture Company

Furniture

Electrical Appliances

*Your interest is our business pleasure.*

BRIDGEPORT, ALABAMA

## Jackson County Farm Supply & Hatchery, Ltd.

General Hardware

Farming Implements

Sherwin-Williams Paints

Baby Chicks

Seed & Feed

STEVENSON, ALABAMA

*Compliments of*

**Ray Miller**

State Line Air Activities

RICHARD CITY, TENN.

*Compliments of*

**Peoples Restaurant**

*Old Fashioned Home Cooking*

STEVENSON, ALABAMA

**Terry's Tavern**

DINE & DANCE

*Visit us for an evening of fun*

Phone 6281

RICHARD CITY, TENN.

*Compliments of*

**CLUB JEWEL**

RICHARD CITY, TENN.

*Compliments from*

**ANDERSON BROTHERS**  
and  
**GOODWILL STORE**

South Pittsburg, Tennessee

*Compliments of*

**The Three**  
**Sisters Shop**

CHATTANOOGA, TENN.

**DIXIE DINER**

*You are a stranger here but once.*

Richard City, Tenn.

*Compliments of*

**JOHN HALL**  
REAL ESTATE DEALER

Bridgeport, Ala.

## Patrick Lumber Co.

CONTRACTOR

SCOTTSBORO, ALABAMA

## Wright's Flower Shop

Stevenson Agent Dial 3641

A. G. Rudder

Scottsboro, Alabama

*Compliments of*

## O. K. Barber Shop

SCOTTSBORO, ALA.

## Butler & Kennamer Wholesale Company

GROCERIES *and* NOTIONS

SCOTTSBORO, ALABAMA

*Compliments of*  
**The W. W. THOMPSON CO.**  
Incorporated

Formerly W. R. Thompson Co.  
211 Hull Street RICHMOND 2, VIRGINIA



**Printers and Publishers**  
SCHOOL ANNUALS  
*Complete from Photos to Binding*

**SCHOOL PHOTOGRAPHERS**  
*Individual and Group Photos*  
*School Record Photos*

# BOGART'S STORE

GENERAL MERCHANDISE



PURINA FEEDS



STEVENS ON, ALABAMA

Hodges' Drug Store

CHARLES E. HODGES

R. L. HODGES, JR.



Phone 35



SCOTTSBORO, ALABAMA

Loyd's Dairy



GRADE **A** MILK



STEVENS ON, ALABAMA

Phone 3151  
NIGHT 3271

REPAIRING  
AND  
OVERHAULING

Phone 3151  
NIGHT 3271

## Lillard's Service and Repair Shop

"ON THE HIGHWAY" — STEVENSON, ALA.

STANDARD  
OIL  
PRODUCTS

STANDARD OIL PRODUCTS  
WASHING — POLISHING — LUBRICATION

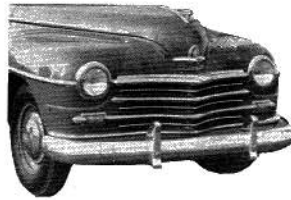
STANDARD  
OIL  
PRODUCTS

TIRES — TUBES  
BATTERIES

*Auto*

AUTO PARTS  
ACCESSORIES

SERVICE



General  
Auto - Truck  
And Tractor  
Repairing

Electric  
And Acetylene  
Welding  
Efficient  
Work

COMPLIMENTS OF

## MOUNTAIN CITY STOVE AND MFG. CO.

KITCHEN AND DINING ROOM SUPPLIES

FOR SCHOOL

INCLUDING GLASSWARE

SILVERWARE AND CHINAWARE



1240 Market Street

CHATTANOOGA, TENN.

# ALLISON'S CASH GROCERY

FANCY GROCERIES, MEATS AND FRUITS

STEVENSON, ALABAMA

PHONE 3341

*Compliments of*

**Isabelle Theater**

STEVENSON, ALABAMA

**Guy M. Timberlake**

PHARMACY

Phone 3891

Stevenson

Alabama



# KIRCH MOTOR COMPANY

AUTO BODY REPAIRING  
24 HOUR WRECKER SERVICE

BRIDGEPORT, ALABAMA

PHONE 2442

## John R. Loyd & Son

Groceries, Notions, Dry Goods

BRIDGEPORT, ALABAMA

## BRIDGEPORT GIN, WAREHOUSE COMPANY

*Buyer of Cotton Seed, Corn, and Grain*

*Dealer in Fertilizer, Feed, Seed*

BRIDGEPORT, ALABAMA

Specialized Brake Service

Specialized Motor Tune-Up Service

## Baker Auto Service

*"Where Service Counts"*

Bumper to Bumper Service

Tractor Repair, Welding

STEVENSON, ALABAMA

5 Miles South on Highway 72

## STEVENSON SERVICE STATION

Greasing, Gas, Oil, Accessories,  
Washing

*"THAT GOOD GULF GASOLINE"*

Stevenson, Alabama Phone 3471

PLEASE  
PATRONIZE  
OUR  
ADVERTISERS

**SCOTTSBORO  
WHOLESALE CO.**

WHOLESALE GROCERIES

*Distributors of*

Sunflower

Stokley's Finest Foods

Blue Plate Mayonnaise



SCOTTSBORO, ALABAMA

**Wofford Oil Co.**

Division of the

Pure Oil Company

S. T. Campbell, *Agent*



SCOTTSBORO, ALABAMA

*Reliable Druggist*

**GEO. R. BIBLE**



STEVENSON, ALABAMA

COMPLIMENTS OF  
**BIZNESS EQUIPMENT  
COMPANY**

Huntsville, Ala.

*Compliments of*  
The  
McKenzie School

CHATTANOOGA, TENN.

*Miller Bros Co*

CHATTANOOGA, TENN.

W. J. WORD LUMBER COMPANY



SCOTTSBORO, ALABAMA

*Compliments of*

Henry Jones



JACKSON COUNTY SHERIFF

*Compliments of*

Jackson County  
Locker Plant

SCOTTSBORO, ALABAMA

J. B. Presley, *Agent*

STANDARD OIL COMPANY

Stevenson

Alabama

Scottsboro



Phone 17

**Benson & Childress**



SCOTTSBORO, ALABAMA

*Blue Moon Cafe*

B. Westmoreland



SCOTTSBORO, ALABAMA

COMPLIMENTS OF

*Jays Flowers*



CHATTANOOGA, TENN.

COMPLIMENTS OF

Southern Dairies



CHATTANOOGA, TENN.

Martin-Thompson Co.

ATHLETIC GOODS



*"It Pays To Play"*

CHATTANOOGA, TENN.

COMPLIMENTS OF

MILLS & LUPTON  
SUPPLY CO.



CHATTANOOGA, TENN.

# WORD MOTOR CO.

STEVENSON & SCOTTSBORO, ALABAMA

Clyde Williams  
VETERANS TRAINING

*Compliments of*  
WILLIAMS RADIO SERVICE  
&  
THE JACKSON COUNTY  
DAY SCHOOL  
SCOTTSBORO, ALABAMA

PLEASE  
PATRONIZE  
OUR  
ADVERTISERS

BOYD TURNER

## Scottsboro Hardware Company

Bendix Automatic Washers  
Refrigerators

Norge Electric Stoves  
Fishing Tackles

SCOTTSBORO, ALABAMA

**CITY MARKET**

Meats — Groceries — Feeds

H. L. Hale                  John D. Smith



Stevenson, Alabama    Phone 3802

*Compliments of*

**Bargin Store**



STEVENSON, ALABAMA

*Ideal Beauty Shop*

Complete Beauty Service

Dial 3001



Stevenson, Alabama

*Compliments of*

**The Gyp Joint**



F. F. A. Proprietors

*Compliments of*

**State Line Service Station**



RICHARD CITY, TENN.

*Compliments of*

**KENNAMER BROTHERS**

Furniture & Household  
Furnishings



Alvin Kennamer    Houston Kennamer  
Stevenson, Alabama

**Lansford Piano Co.**

Bank and Orchestra Instruments  
Accessories — Sheet Music



1730 Cherry St. Chattanooga, Tenn.

*Compliments of*

**WALTON FURNITURE CO.  
HUSTLER PRINTING CO.  
WESTERN AUTO**



South Pittsburg, Tenn.

# SCOTTSBORO

## LAUNDRY & CLEANERS

SCOTTSBORO, ALABAMA

*Compliments of*

**W. BENTLY THOMAS**

*Tax Assessor*

**R. M. STARKLY**

*Tax Collector*

JACKSON COUNTY

*Compliments of*

**The Sports Shop**

CHATTANOOGA, TENN.

Laurence Cobb

**Independent Produce Company**

SCOTTSBORO, ALABAMA



EARL BOSTAIN

# CITY MEAT MARKET

CHATTANOOGA, TENN.

*GREETINGS — BEST WISHES EVER!*

Your School Supplies

HUGH G. PORTER

*Alabama State Representative for*

**BECKLEY CARDY CO.**

CHICAGO 16, ILL.

OWNER OF

THE PORTER COMPANY

Florence, Alabama

*North Alabama's only Manufacturer and Jobber of Janitor Supplies*