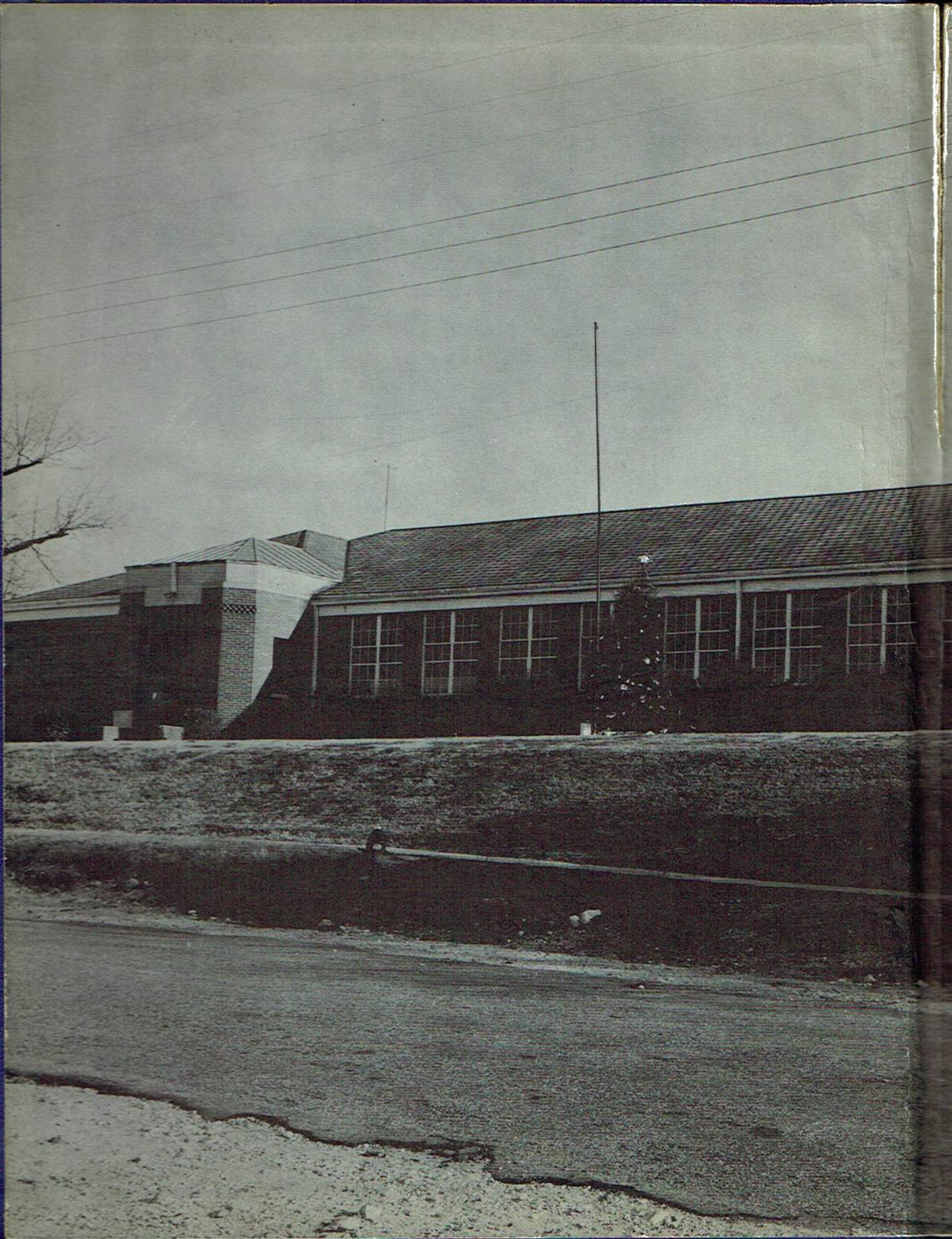




MEMORIES

1
9
5
8



H

Mrs Molly Hancock
1015 Garden Dr
Scottsboro AL 35768-2527



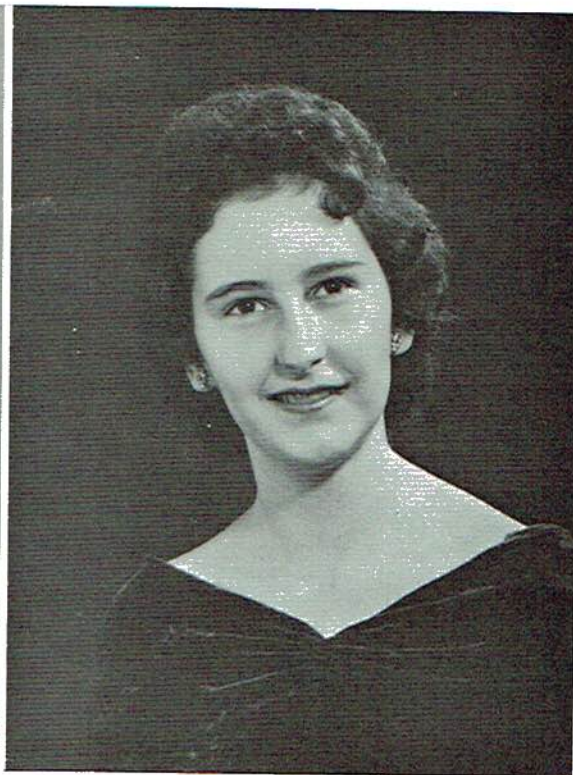


THE 1957-'58

ANNUAL STAFF

PRESENTS

MEMORIES



FOREWORD

As you look through these pages of memories in the future years, may it revive and kindle anew all the happy memories of our many years spent together.

While looking back on these memories, may you receive as much joy and satisfaction as we have received in bringing them to you.

We wish to thank the faculty, students, and friends who helped make this book of "Memories" possible.

The Editors

W
life is
advan
minist
to be
to oth

ries in the future
e happy memories

may you receive
ived in bringing

nd friends who
le.

editors



We, the Seniors of 1958, fondly dedicate this book of "Memories" to Mrs. Frances Harwell whose life is fully dedicated to her profession. Her first interest is always in the welfare of each student and the advancement of our school. Her service goes far beyond the line of duty and she makes her teaching a ministry. Her life reminds us of the Master Teacher who said that his purpose in life was "Not so much to be ministered unto as to minister," and that our lives are measured ultimately by unselfish service to others.

ANNUAL STAFF

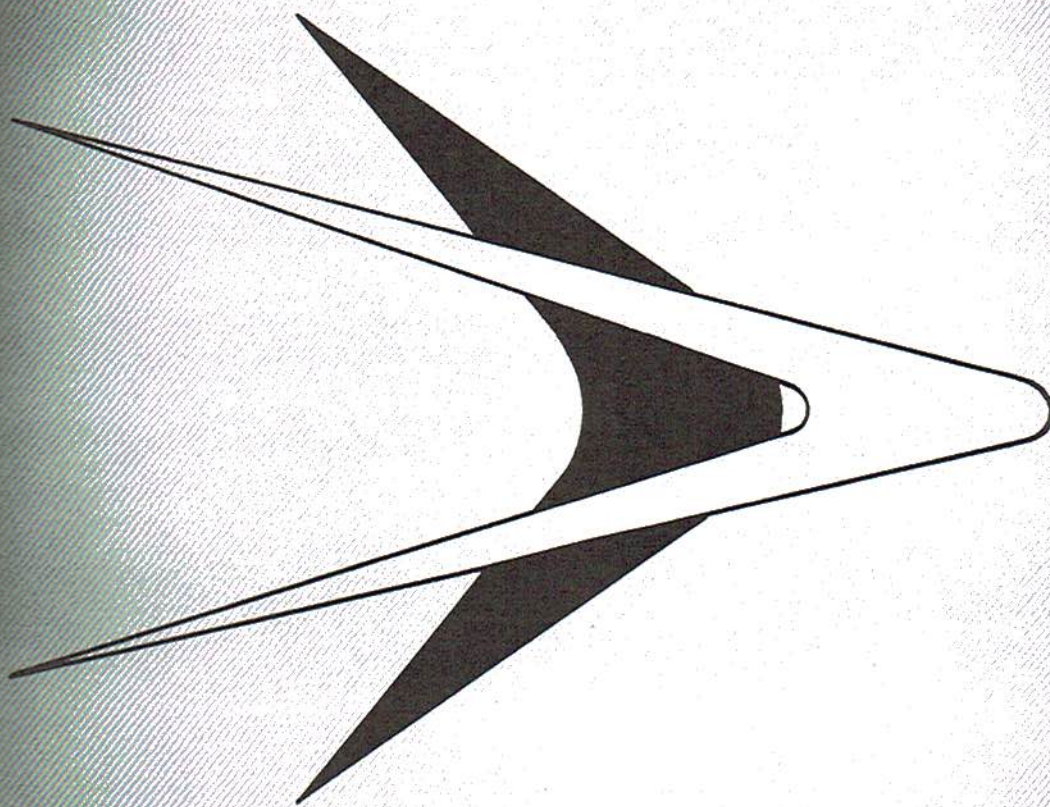


- Co-Editors Carolyn Scissom, Susie Randolph
- Business Manager Jimmy Loyd
- Circulation..... Elizabeth Hammons, Frances Maynor
Roy Thomas
- Advertising Susan Smith, Buddy Wilson
Don Loyd, Elizabeth Allison
- Feature Editor..... Judy Studdard
- Assistant.....Barbara Rogers
- Club Editors.....Judy Smith, Susie Hall
- Class EditorsWanda Mason, Gloria Helton
- Sports Editor Bobby Whitten
- Art Editor Doris Elliott
- TypistPatsy Smith
- Junior Assistants Judy Lea, Irma Rogers, Mickey Young
Ann Moore, Charles Smith
- Senior Sponsor Mrs. Lois Keys



nor

bung



FACULTY



MR. E. R. KNOX
Principal



MRS. LOIS KEYS
Senior English



MISS FAY DILBECK
Mathematics



MRS. MARYADEL GRIG
Commercial Subjects



MRS. JEWELL C. TAN
Home Economics



MRS. FLOSSIE CARML
Social Science



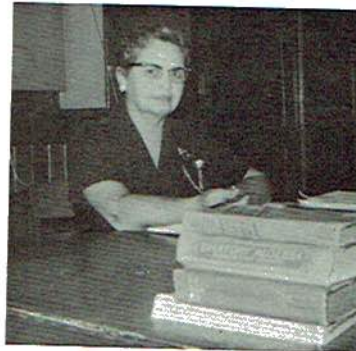
MRS. FRANCES HARW
Librarian



MRS. KATHERINE RIG
Social Studies



MR. NEIL KNOX
Science



MRS. LOYCE HOLDER
Junior English



MISS PEGGY BEENE
Science



MR. WILLIAM FREEMA
Agriculture



COACH ROBERT D. CO
Physical Education

MRS. KATHLE...
Grade
MRS. WILMA V...
Grade
MRS. MYRTLE...
Grade
MRS. ALLIE HA...
Grade
MRS. MARTHA...
Grade
MRS. RUTH CO...
Grade
MRS. GUSSIE P...
Grade
MRS. WANDA...
Grade
MRS. SARAH W...
Grade
MRS. BETTY C...
Grade
MRS. CORA M...
Grade
MRS. VELMA B...
Grade
Pictured: M...
ny, First Gr...
Anderson...
Grades,

MISS JOANNE AUSTIN
Assistant Band Director



MR. JOHNNY SHOOK
Band Director

RS. LOIS KEYS
Senior English

KATHLEEN HEMBREE
Grade



SS FAY DILBECK
Mathematics

WILMA WRIGF
Grade



RS. MARYADEL GRIG
Commercial Subjects

MYRTLE BLAKEMORE
Grade

RS. JEWELL C. TANN
Home Economics

ALLIE HASWELL
Grade



RS. FLOSSIE CARMIA
Social Science

MARTHA LOYD
Grade

RS. FRANCES HARWE
Librarian

RUTH COX
Grade

SS GUSSIE PEACOCK
Fourth Grade

RS. KATHERINE RIG
Social Studies

SS WANDA MORRIS
Fourth Grade



R. NEIL KNOX
Science

S. SARAH WILLIAMS
th Grade

RS. LOYCE HOLDER
Senior English

RS. BETTY COLLINS
th Grade

SS PEGGY BEENE
Science

RS. CORA McCAMPBELL
th Grade

. WILLIAM FREEMA
Agriculture

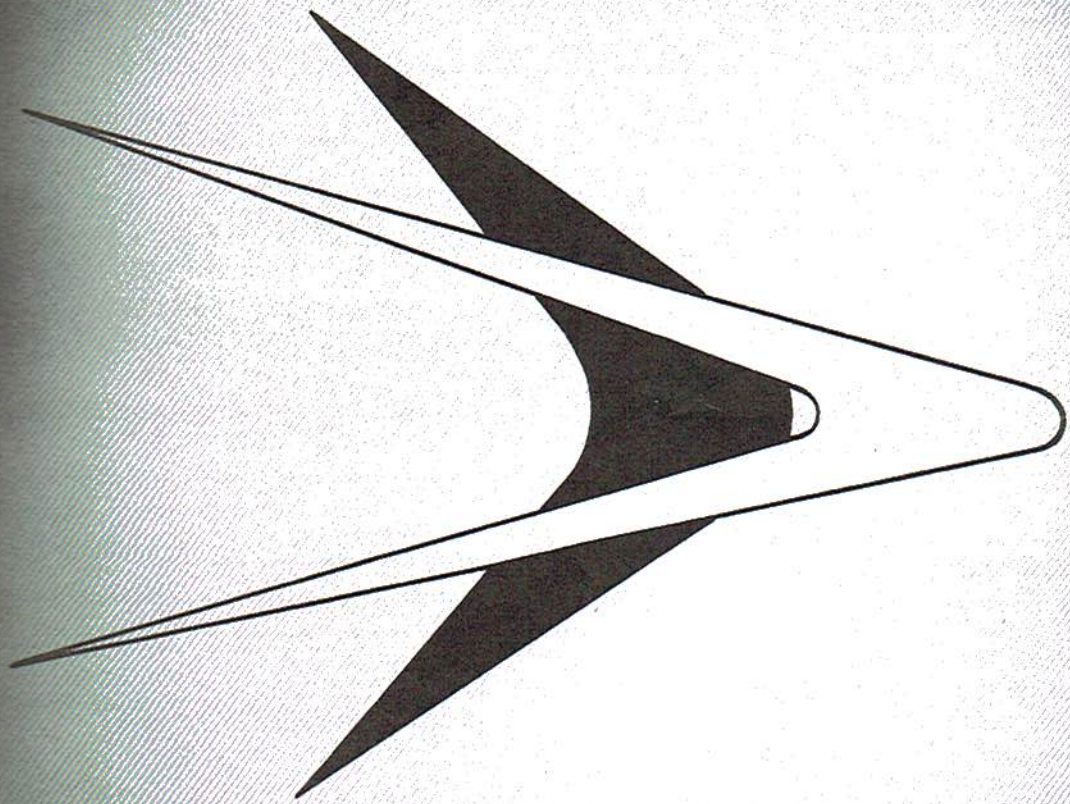
RS. VELMA BECK
th Grade



ACH ROBERT D. CO
Physical Education

Not Pictured: Miss Mary Sue
Country, First Grade; Mrs.
Flossie Anderson, Fourth &
Fifth Grades.





S R O - Z M S
S R O - Z M S

ELIZABETH LUCILLE ALLISON

1, 2, 3, 4; Officer 3, 4; Glee Club 3; Band
Class Officer 2; Homecoming Court 2, 4;
Annual Staff 4.



HEIMA LOUISE BARNES

1, 2, 3.

RENDA FRANCES BROWNING

1, 2, 3; Golden Rule Marble 2; Band
2, 3, 8th; Beta Club 2, 3, 4; Vice-Presi-
ent 3; Student Council 2; Blue & Gold
Staff 2, 3, 4, Editor 4; Most Studious 4;
State Medalist 4.



HANK QUAY CAMPBELL

2nd 8th, 3, 4; Drum Major 3, 4; Officer
4; FFA 1, 2, 3; Cheerleader 1, 2; Glee
Club 1, 4; Class Officer 1; Science Club
Dramatics Club 3; Flirtiest 4.

LUCY ANITA COFFMAN

1, 2, 3, 4; Glee Club 2, 3; State Degree



ERNEST WILLIAM CRAWFORD

1, 2, 3, 4; Secretary 3; President 4; Glee
Club 4; President 4; Football 2; Friendliest 4.

MIS ANN ELLIOTT

1, 2, 3, 4; Treasurer 3; State Degree Candi-
date 4; Beta Club 4; Annual Staff 4.



MARA MAE GILL

1, 2, 3, 4; State Degree 3; Golden Rule
Marble 3; Glee Club 1, 2, 3, 4; Vice-Presi-
ent 4.



MARY FRANCES GOTHARD
 FHA 1, 2, 3, 4; Glee Club 1, 2, 3; State Degree 3; Golden Rule Marble 2.

WALTER BERRY GOTHARD, JR.
 FFA 2, 3; Treasurer 4; Football 1, 2; Beta Club 1, 2, 3.



WANDA SUE GUESS
 FHA 2, 3, 4; Glee Club 3, 4; Annual Staff 4; Class Officer 1.

JOHN RICHARD GUNTER
 Football 2, 3, 4; Band 1, 2, 3; FFA 3; Secretary 4; Beta Club 4; Track Team 3, 4; Glee Club 8th; Dramatics Club 2, 3.



WANDA SUE HALL
 Band 8th, 1, 2, 3, 4; Officer 2; FHA 1, 2, 3, 4; State Degree 3; Secretary 3; Treasurer 4; Historian 4; Golden Rule Marble 3; Photographer 3; Beta Club 4; Glee Club 4; Beta Club Dressed 4; Annual Staff 4; FFA Sweetheart 4.

ELIZABETH ANN HAMMONS
 FHA 2, 3, 4; Glee Club 1, 2, 3; Annual Staff 3, 4; State Degree Candidate 4.



BETTY LOU HEADRICK
 FHA 1, 2, 3, 4; Band 3, 4; Glee Club 1, 3.

GLORIA DEAN HELTON
 FHA 1, 2, 3, 4; State Degree 3; Beta Club 3, 4; Reporter 4; Annual Staff 4; Dramatics Club 3; Officer Staff 4; Science Club 8th.

ES GOTHARD
Glee Club 1, 2, 3; State Degree 4;
Rule Marble 2.

Y GOTHARD, JR.
Treasurer 4; Football 1, 2; B Club 3, 4; Glee Club 8th, 4; Dramatics Club 1, 3.

UESS
Glee Club 3, 4; Annual Staff 1, 2, 3, 4; Beta Club 3, 4; Dramatics Club 1, 2, 3, 4; Junior Play 3; Glee Club 4; Most Popular 3, 4.

GUNTER
Band 1, 2, 3; FFA 3; Secretary 4; Track Team 3, 4; Dramatics Club 2, 3.

LL
Officer 2; FFA 1, 2, 3; Secretary 3; Treasurer 4; Golden Rule Marble 3; Photo Club 4; Glee Club 4; Best of Staff 4; FFA Sweetheart 1, 2, 3, 4.

HAMMONS
Glee Club 1, 2, 3; Annual Staff 4; Candidate 4.

DRICK
Glee Club 1, 3, 4; Reporter 4; Quietest 4.

ELTON
State Degree 3; Beta Club 1, 2, 3, 4; Annual Staff 4; Dramatics Club 1, 2, 3, 4; Science Club 8th.

JOHN THURMAN HENEGAR
FFA 2, 3, 4; Glee Club 4.

FLORIA ANNE HENSON
FFA 1, 2, 3, 4; State Degree 4; Beta Club 1, 2, 3, 4; Glee Club 8th, 4; Dramatics Club 1, 3.

MERRY LANA HISE
FFA 2, 3, 4; Beta Club 3, 4; Dramatics Club 1, 2, 3, 4; Junior Play 3; Glee Club 4; Most Popular 3, 4.

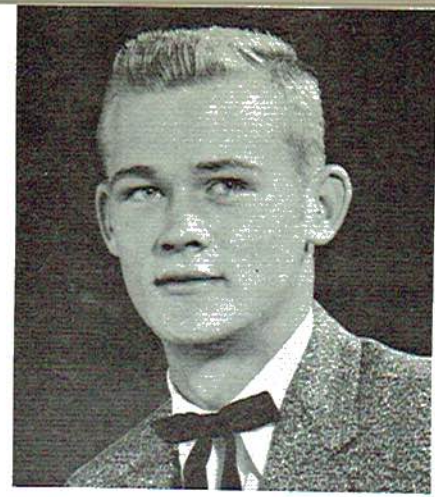
THOMAS EDWIN JACKSON
FFA Club 2, 3, 4; Class President 2; Football 1, 2, 3, 4; Most Dependable 4.

EARL WILLIAM JANEWAY
FFA 1, 2, 3; Football 4.

ANNNA JOHNSON
FFA 1, 2, 3, 4; State Degree 3; Band 8th, 2, 3; Majorette 2, 3; Dramatics Club 3; Glee Club 4; Wittiest 4.

CARL EDMOND LAWHORNE
FFA 1, 2, 3, 4; Reporter 4; Quietest 4.

RUBY MAE LAWSON
FFA 1, 2, 3, 4; Song Leader 3; Secretary 4; State Degree 3; Golden Rule Marble 2; Glee Club 1, 2, 3, 4.





DON KETNER LOYD
 Football 3; Track Team 3; Annual Staff 4
 Glee Club 8th; Treasurer 4; Blue & Gold
 Staff 2, 3, 4; Play Cast 3.



JAMES EDWARD LOYD III
 Football 2, 3, 4; B. Club 3, 4; Beta Club 1
 2, 3, 4; Student Council 8th, 1, 4; Blue &
 Staff 2, 3, 4; Dramatics Club 3; Annual St
 4; Play Cast 3; Most Studious 4.



WANDA JOYCE MASON
 FHA 1, 2; Song Leader 3; State Degree 4;
 Girls Chorus 1, 2; Beta Club 2, 3, 4; Vice-
 President 4; Dramatics Club 3; Play Cast
 3; Annual Staff 4.



MARY FRANCES MATTHEWS
 Band 1; Class Favorite 1; Glee Club 1, 2,
 3, 4; FHA 1, 2, 3, 4; State Degree 3; Gold
 Rule Marble 3; FHA Officer 3; Play Cast
 Blue & Gold Staff 4; Dramatics Club 3;
 Cheerleader 3, 4; Flirtiest 4.



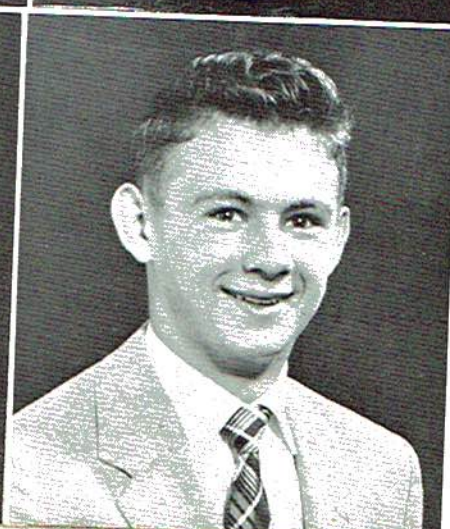
FRANCES GLYNN MAYNOR
 FHA 1, 2, 3, 4; Band 3; Glee Club 3; Dram
 ics Club 3; Play Cast 3; Class Officer 4;
 Annual Staff 4; Best Personality 4; State Deg
 Candidate 4.



REVA JANE McCRARY
 FHA 1, 2, 3, 4; State Degree Candidate 4;
 Glee Club 3, 4; Officer 4; Cheerleader 1.



CAROLYN ANN MOORE
 FHA 1, 2, 3, 4; Glee Club 4.



CHARLES EDGAR PALMER
 FFA 1, 2, 3; B Club 3; Football 2, 3; Play
 Cast 3; Student Council 2; Vice-President
 3; Blue & Gold Staff 3, 4.

am 3; Annual Staff 4
r 4; Blue & Gold
st 3.

D III
lub 3, 4; Beta Club 1
cil 8th, 1, 4; Blue &
cs Club 3; Annual St
Studios 4.

ON
r 3; State Degree 4;
a Club 2, 3, 4; Vice-
cs Club 3; Play Cast

TTHEWS
e 1; Glee Club 1, 2,
ate Degree 3; Golde
Officer 3; Play Cast
Dramatics Club 3;
tiest 4.

YNOR
; Glee Club 3; Dram
3; Class Officer 4; A
onality 4; State Deg

egree Candidate 4;
r 4; Cheerleader 1,

RE
lub 4.

MER
Football 2, 3; Play
cil 2; Vice-President
, 4.

PAUL EDWARD PAYNE
Football 1, 2, 3, 4; Co-Captain 4; "B" Club
4; Mr. B. H. S. 4; Best Dressed 4; Class
President 3.

MONT RAY PELHAM
FA 2, 3, 4.

DONALD EARL RAGAN
FA 1, 2, 3, 4; Glee Club 4.

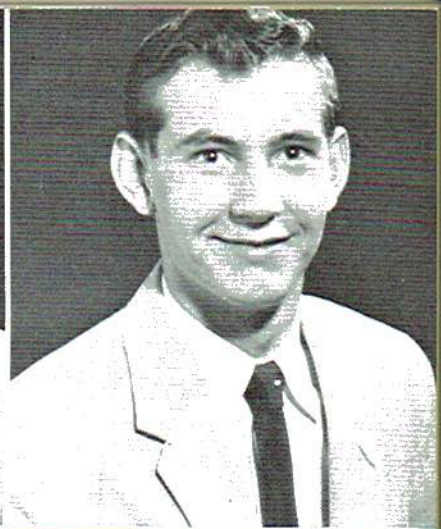
BETTIE SUE RANDOLPH
FA 1, 2, 3, 4; Pianist 2; Historian 3; State
Degree 3; State Historian 4; Beta Club 1, 2,
4; Secretary 3; Blue & Gold Staff 3, 4;
Assistant Editor 4; Student Council 8th, 1,
Secretary-Treasurer 2; Dramatics Club
Cheerleader 3; Homecoming Court 4;
Girl's State Representative 3; Co-Editor An-
nual 4; Girls Chorus 1, 2; Pianist 1, 2; Office
Staff 3; Most Dependable 4.

WENDELL RAULSTON
FA 1, 2, 3, 4; Most Athletic 4; Football 3, 4.

ARTHUR HASTY REEVES
Football 4; Class Secretary 2; Most Likely to
Succeed 4.

BARBARA ANN ROGERS
FA 1, 2, 3, 4; State Degree 3; Treasurer 4;
Miss Homemaker 4; Glee Club 4; Girls Chorus
; Golden Rule Marble 3; Dramatics Club 3;
Annual Staff 4; Class Officer 3; Homecoming
Court 4; Science Club 8th.

MICROTHY DEAN ROREX
FA 1, 2, 3, 4; Glee Club 4.





CAROLYN JANETTE SCISSOM

FHA 1, 2, 3, 4; Reporter 3; Corresponding Secretary 4; State Degree 3; Science Club 8th; Dramatics Club 1, 2; Beta Club 3, 4; Blue & Gold Staff 1; Office Staff 2, 3; Corresponding Secretary 3; Play Cast 3; Girls Chorus 1; Co-Editor Annual 4.

BRUCE SMITH

FFA 1, 2, 3, 4.



JUDITH DEAN SMITH

Band 7th, 8th, 1, 2, 3, 4; Head Majorette 4; Glee Club 4; FHA 1, 2, 3, 4; Officer 3; Parliamentarian 2; State Degree 4; Beta Club 2, 3, 4; Miss B. H. S. 4; Most Likely to Succeed 4; Annual Staff 4.

PATRICIA LYNNETH SMITH

FHA 1, 2, 3, 4; President 4; Band 1, 2, 3, 4; Assistant Student Director 4; First Lieutenant 3; Beta Club 2, 3, 4; Secretary 4; State Degree 3; Golden Rule Marble 4; Class Officer 3, 4; Vice-President 3; President 4; Annual Staff 4; Class Favorite 2; Friendliest 4.



SUSAN ANN SMITH

8th Science Club FHA 1, 2, 3, 4; Reporter Corresponding-Sec. 3; Vice-President 4; State Degree 3; Beta Club 2, 3, 4; Band 2, 3; Officer 3; Junior Play 3; Cheerleader 4; Annual Staff 4.

ALMA LEE STEELE

FHA 1, 2, 3, 4; Glee Club 1, 2, 4.



ROY HUGH THOMAS

FFA 1, 2, 3, 4; Football 1, 2, 3, 4; Captain Most Valuable Player 3; Class Officer 4; Student Council 4; "B" Club 3; Vice-President 3; Most Popular 4; Annual Staff 4; Class Favorite 3.

JUDY SANDRA STUDDARD

FHA 1, 2, 3, 4; State Degree 3; Parliamentarian 3; Corresponding Secretary 4; Golden Rule Marble 2; Beta Club 2, 3, 4; Play Cast Girls' Chorus 1, 2; Blue and Gold Staff 2; Dramatics Club 3; Homecoming Court 1, 2, 3; Queen 4; Annual Staff 4.



SCISSOM
 3; Corresponding
 Degree 3; Science C
 1, 2; Beta Club 3,
 Office Staff 2, 3; C
 ast 3; Girls Chorus 1

JANE WALKER
 Office Staff 3;
 Club 8th'

LEE WALKER
 1, 2, 3, 4; Glee Club 3, 4;
 Degree 4; Band 8th, 1



H
 3, 4; Head Majorette
 1, 2, 3, 4; Officer 3
 State Degree 4; Beta
 H. S. 4; Most Liked
 Staff 4.

NEWTON WILSON, JR.
 3, 4; Play Cast 3; Football 1, 2, 3, 4;
 Club 3, 4; Track Team 3, 4; Glee
 8th; Student Council 3, 4; Presi-
 4; Dramatics club 3; Annual Staff 4;
 Club



SMITH
 ent 4; Band 1, 2, 3,
 3; Director 4; First Lieute
 4; Secretary 4; Sta
 e Marble 4; Class
 ent 3; President 4
 Favorite 2; Friend

BERT LEE WHITTEN
 1, 2, 3, 4; B. Club 1, 2, 3, 4;
 3; Annual Staff 4; Beta
 2, 3, 4; President 4



1, 2, 3, 4; Reporter
 Vice-President 4;
 Club 2, 3, 4; Band 1
 Play 3; Cheerlead

SPECIAL HONORS

ub 1, 2, 4.



D.A.R. MEDALIST

Brenda Browning

**BETTY CROCKER
 HOMEMAKER OF TOMORROW**

Judy Studdard

1, 2, 3, 4; Captain
 ; Class Officer 4;
 Club 3; Vice-Pres
 Annual Staff 4; C

ARD
 Degree 3; Parliamen
 Secretary 4; Gold
 b 2, 3, 4; Play Cas
 and Gold Staff 2;
 ming Court 1, 2, 3



Jane M.



Susie



Dorothy



Clara



Bruce



Sherry



Susie R.



Nancy



Mary



Donald



Betty



Wanda M.



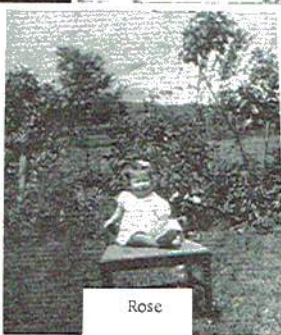
Frances



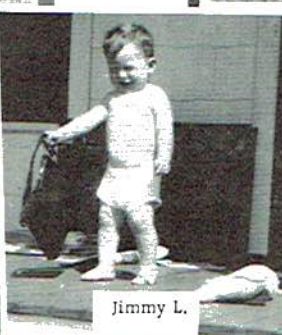
Brenda



Ann



Rose



Jimmy L.



Al



Johnny



Charles



Buddy



Gloria



Judy



Elizabeth H.



Don L.



Barbara



Bill



Carl



Carolyn



Judy S.



Elizabeth A.



W. B.



Joanna



Frankie



Bobby



Roy



Carol



Thomas



Wanda G.



John



Doris



William



Janie



Jimmy



Ruby

"When our hearts were young and gay"



Susie R.



Alma



Barbara



Barbara

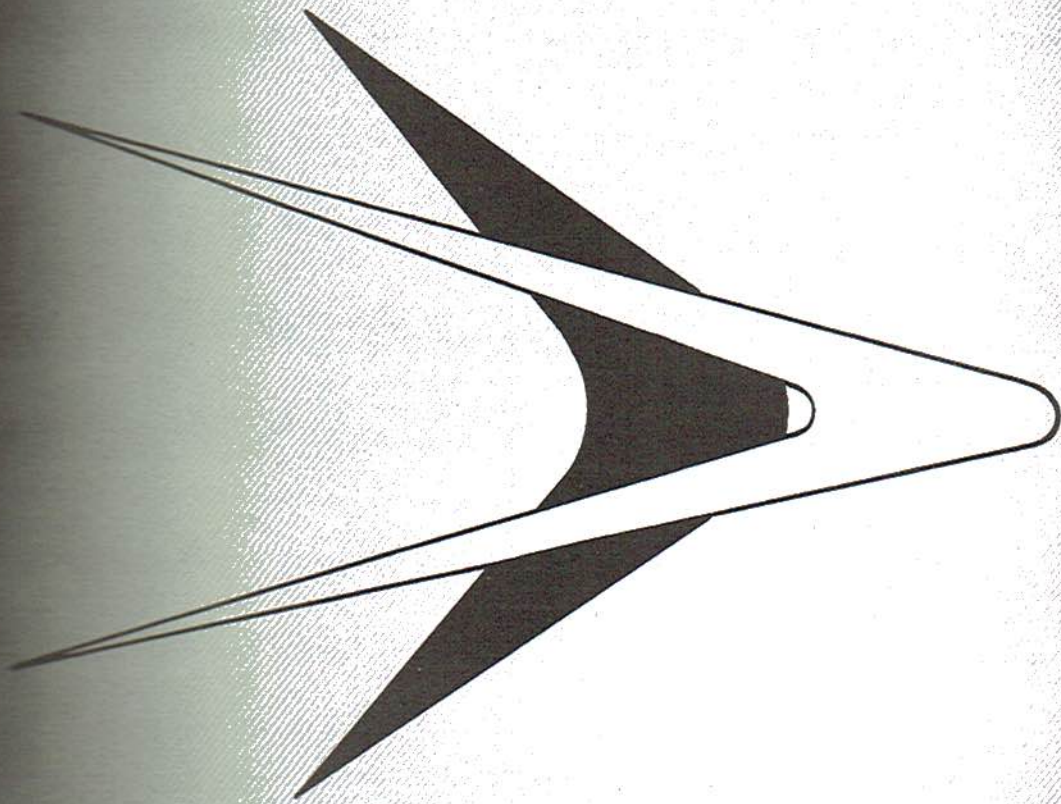


Roy



Carol

our
arts we
young
gay



Z
D
E
R
C
L
A
S
S
M
E
N

JUNIORS



Akins, Shir
Bellomy, M
Blevins, Ba
Blevins, Bl



Burton, Eug
Bynum, Ro
Carlisle, W
Cookston,



Cooper, K
Coffman, S
Crabtree, S
Crabtree, S



Durham, S
Duke, Jerr
Duke, Virg
Foshee, Ca



M. C. M.
M. M. M.
M. M. M.
M. M. M.

M. C. M.
M. M. M.
M. M. M.
M. M. M.

M. C. M.
M. M. M.
M. M. M.
M. M. M.

M. C. M.
M. M. M.
M. M. M.
M. M. M.

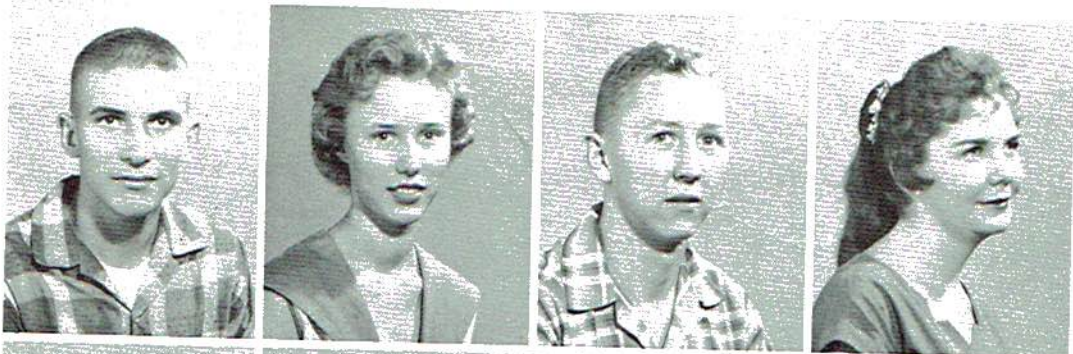
M. C. M.
M. M. M.
M. M. M.
M. M. M.

Akins, Shi
Bellomy, M
Blevins, Ba
Blevins, Bl

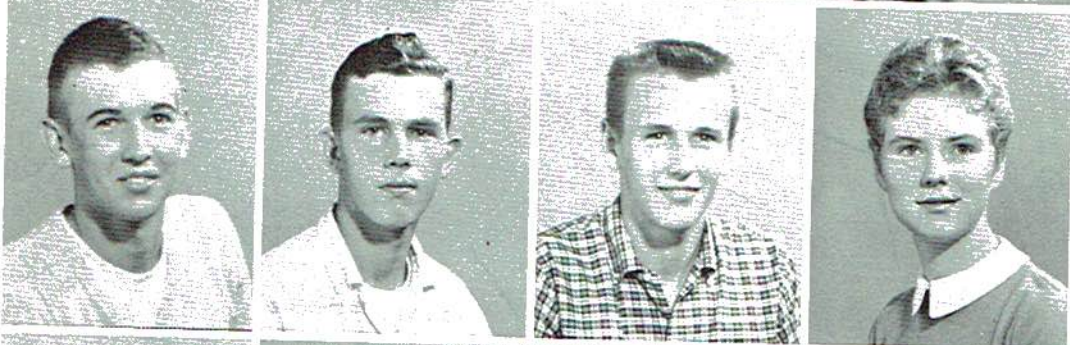
Burton, Eu
Bynum, Ro
Carlisle, W
Cookston,

Cooper, K
Coffman,
Crabtree,
Crabtree,

Durham, S
Duke, Jerr
Duke, Virg
Foshee, Ca



Rogers, T
 Rorex, N
 Smith, C
 Steele, I



Steward,
 Thomas,
 Thomas,
 Thomas,



Thomas,
 Thompson
 Tiffin, D
 Tiffin, D



Toney, S
 Vinson, C
 Waggoner
 Warren, B



Whitcher,
 Witt, Inda
 Wynne, C
 Young, M

Not Pictur
 Raulston,

SOPHOMORES

Rogers, T
 Rorex, Na
 Smith, Ch
 Steele, In



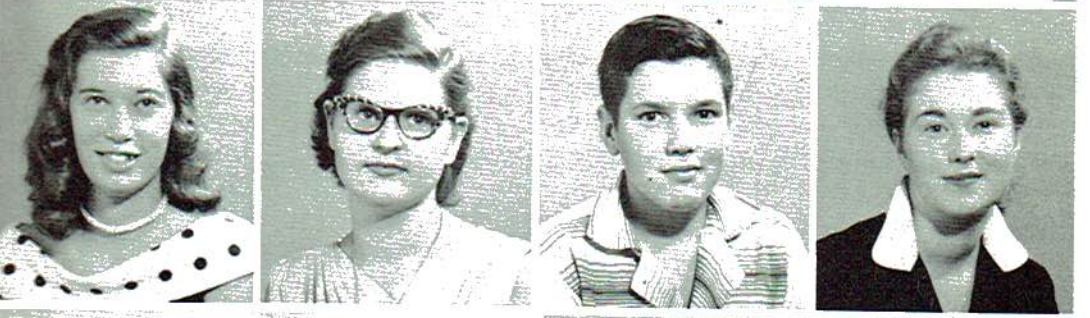
Steward,
 Thomas,
 Thomas,
 Thomas,



Thomas, W
 Thompson,
 Tiffin, Do
 Tiffin, Do



Toney, Sid
 Vinson, Ch
 Waggoner,
 Warren, R



Whitcher,
 Witt, Inda
 Wynne, C
 Young, M



Not Pictur
 Raulston, C



Lee, Bobby
Mashburn,
McCloud,
McCrary,



McMillan,
Moore, Ma
Newton, Pa
Nowlin, J



O'linger, B
Pelham, B
Pemberton
Charles
Peoples, C



Randolph,
Raulston, D
Rogers, Je
Rogers, Sa



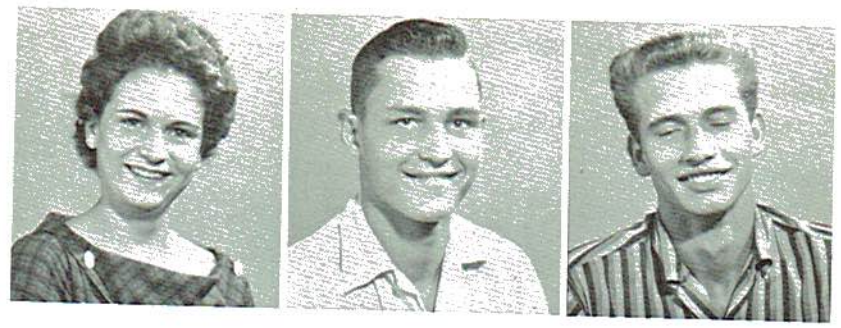
Rowe, Pat
Samples, E
Sampley, F
Scissom, S



Seale, Lois
Sebring, F
Steele, Bill
Steele, Jan

Lee, Bobby
 Mashburn,
 McCloud,
 McCrary, I

Warren, Veda
 Wear, Flavil
 Wells, Bobby



McMillan,
 Moore, Ma
 Newton, Fr
 Nowlin, Jim

FRESHMEN

O'linger, J
 Pelham, B
 Pemberton
 Charles
 Peoples, C



Randolph,
 Raulston, D
 Rogers, Je
 Rogers, Sa



Rowe, Pat
 Samples, K
 Sampley, F
 Scissom, S



Seale, Lois
 Sebring, Fra
 Steele, Billy
 Steele, Jam





Hughes, Terry
 Jackson, John
 Janeway, Clara
 Killom, Paul



Kirk, Darleen
 Lanham, Sara
 Lawson, Frances
 Mason, Nelson



Matthews, Kyle
 Moss, Jerry
 Moore, Brenda
 Moore, Joyce



Morgan, Elsie
 McCrary, John
 McLemore, John
 Nowlin, Donald



Olinger, Hazel
 Payne, Bill
 Payne, J. B.
 Prince, James
 Earl



Randolph, Hugh
 Richardson, Lulu
 Ridley, John
 Rorex, Walter

Hughes, Terry
 Jackson, John
 Janeway, Clara
 Killom, Paul



Kirk, Darleen
 Lanham, Sara
 Lawson, Frances
 Mason, Nelson



Matthews, Kyle
 Moss, Jerry
 Moore, Brenda
 Moore, Joyce



Morgan, Elsie
 McCrary, John
 McLemore, John
 Nowlin, Donald

EIGHTH GRADE

Olinger, Hazel
 Payne, Bill
 Payne, J. B.
 Prince, James
 Earl



Randolph, Hugh
 Richardson, Luke
 Ridley, John
 Walter
 Rorex, Raymond





Cash, Ann
 Castle, Ben
 Crabtree, D
 Creek, Ted

Crouch, Lo
 Chambliss
 Dawson, Th
 Elkins, Hel

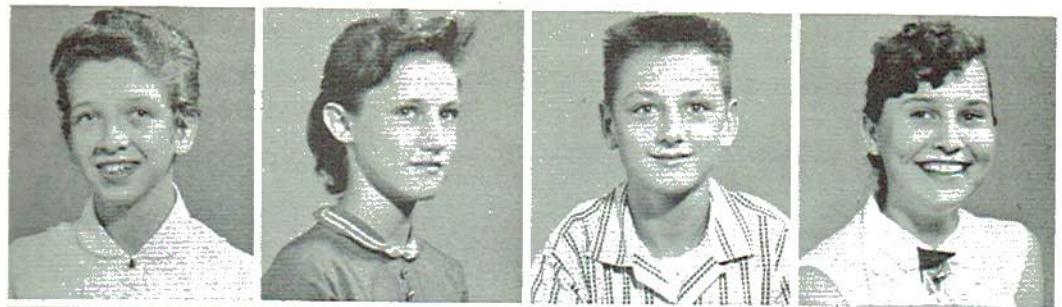
Futrell, Cl
 Goff, Imog
 Guess, Phyl
 Haney, Lu

Henson, Jim
 Hise, Jerry
 Holder, Pat
 Howell, D

Hurst, Mar
 Frances
 Janeway, B
 Jenkins, Ro
 Kirk, Mack

Lawson, Ma
 Lewis, John
 Martin, Do
 McCloud, D

Cash, Ann
 Castle, Betty
 Crabtree, D
 Creek, Ted



Crouch, Lo
 Chambless,
 Dawson, Th
 Elkins, Hel



Futrell, Cla
 Goff, Imoge
 Guess, Phyl
 Haney, Luk



Henson, Jim
 Hise, Jerry
 Holder, Pa
 Howell, Da



Hurst, Mary
 Frances
 Janeway, E
 Jenkins, Ro
 Kirk, Mack



Lawson, Ma
 Lewis, John
 Martin, Do
 McCloud, D





White, C
Whited, A
Wilson, G
Wilson, K

SEVENTH GRADE



Anthony
Asherbra
Roger
Atkins,
Baine, J



Bellomy
Boldin, S
Brown, E
Burnette



Brown, S
Burrows,
Campbe
Case, C



Click, G
Click, L
Coffelt,
Cooper,

White, Ca
Whited, A
Wilson, G
Wilson, K



Anthony,
Asherbra
Roger
Atkins, V
Baine, J



Bellomy,
Boldin, E
Brown, E
Burnette,



Brown, S
Burrows,
Campbell
Case, C



Click, G
Click, L
Coffelt,
Cooper,

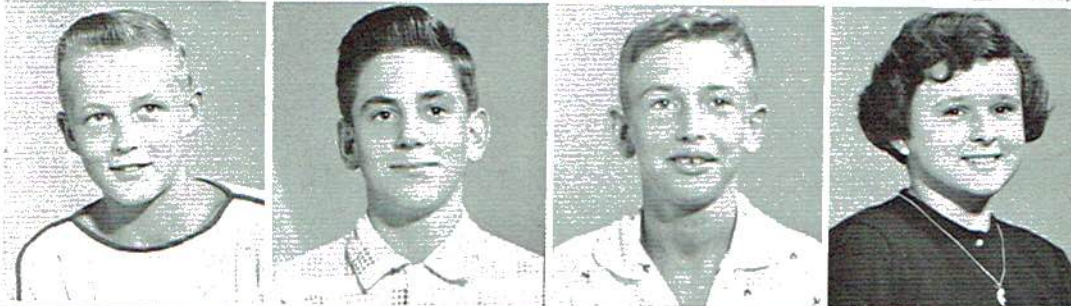




McMillan
Moore, B
Moore, B
Moss, M



Myers, B
Pace, W
Payne, M
Peacock,



Pemberton
Pitassi, E
Prince, J
Randolph



Rash, L
Rick, J
Ridley, M
Rowe, B



Rowe, J
Rowland,
Samples,
Seale, J



Seymore,
Sisk, S
Smith, W
Sparkman



McMillian
 Moore, Be
 Moore, B
 Moss, Mic



Myers, Br
 Pace, Wa
 Payne, M
 Peacock,



Pemberton
 Pitassi, E
 Prince, J
 Randolph,



Rash, Lin
 Rick, Jam
 Ridley, M
 Rowe, Bil



Rowe, Jo
 Rowland,
 Samples,
 Seale, Jo



Seymore,
 Sisk, Sara
 Smith, V
 Sparkman



York, James

SIXTH GRADE



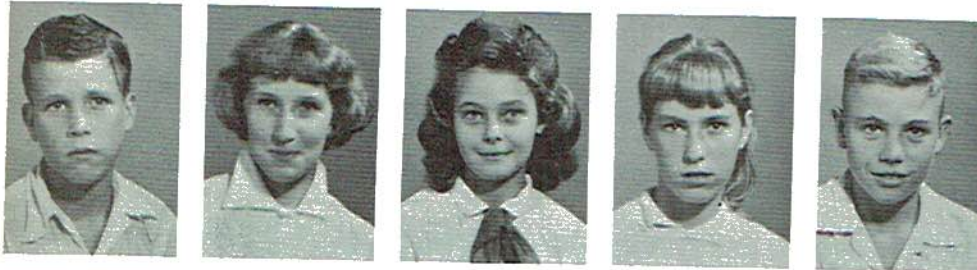
Atkins, Calvin
 Barnes, Donnie
 Brown, Elaine
 Brown, Jesse Lee
 Capps, Jimmy



Carlisle, Janice
 Carlton, Raymond
 Castle, Addie
 Coffelt, Catherine
 Conway, Carl



Coates, Johnny
 Coffman, Richard
 Evans, Edna Jo
 Futrell, LaVerne
 Gill, Leon



Gill, Truman
 Guess, Shirley
 Hart, Brenda
 Headrick, Brenda
 Henegar, J. C.



Hicks, Annette
 Hill, Robert
 Holder, Beatrice
 Jenkins, Buddy
 Kirk, Josephine

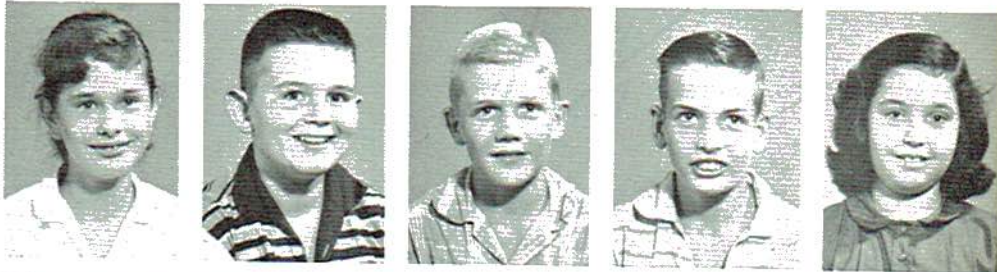


Kirk, Thomas
 Lambert, Alfred
 Lawhorne, Carolyn
 Lawhorne, David

Lipham, Larry
 Long, Mary
 Mashburn, Brenda
 Massey, June
 Matthews, Betty



McConkey, Larue
 McDonald, Lee
 Moore, Harold
 Moss, Dennis
 Murray, Marilyn



Nevels, Willie Jo
 Noble, Vertis
 Palmer, Barbara
 Randolph, Peggy
 Rash, Leon



Rash, Tim
 Raulston, Julia
 Rich, Patricia
 Roberts, Bobby
 Rogers, Tilford



Scissom, Betty
 Scott, Ronald
 Sloan, Carl
 Smith, James
 Smith, Joyce



Sparkman, Jeff
 Spangler, Wilma
 Stevens, Edward
 Steele, John T.
 Toney, Sue



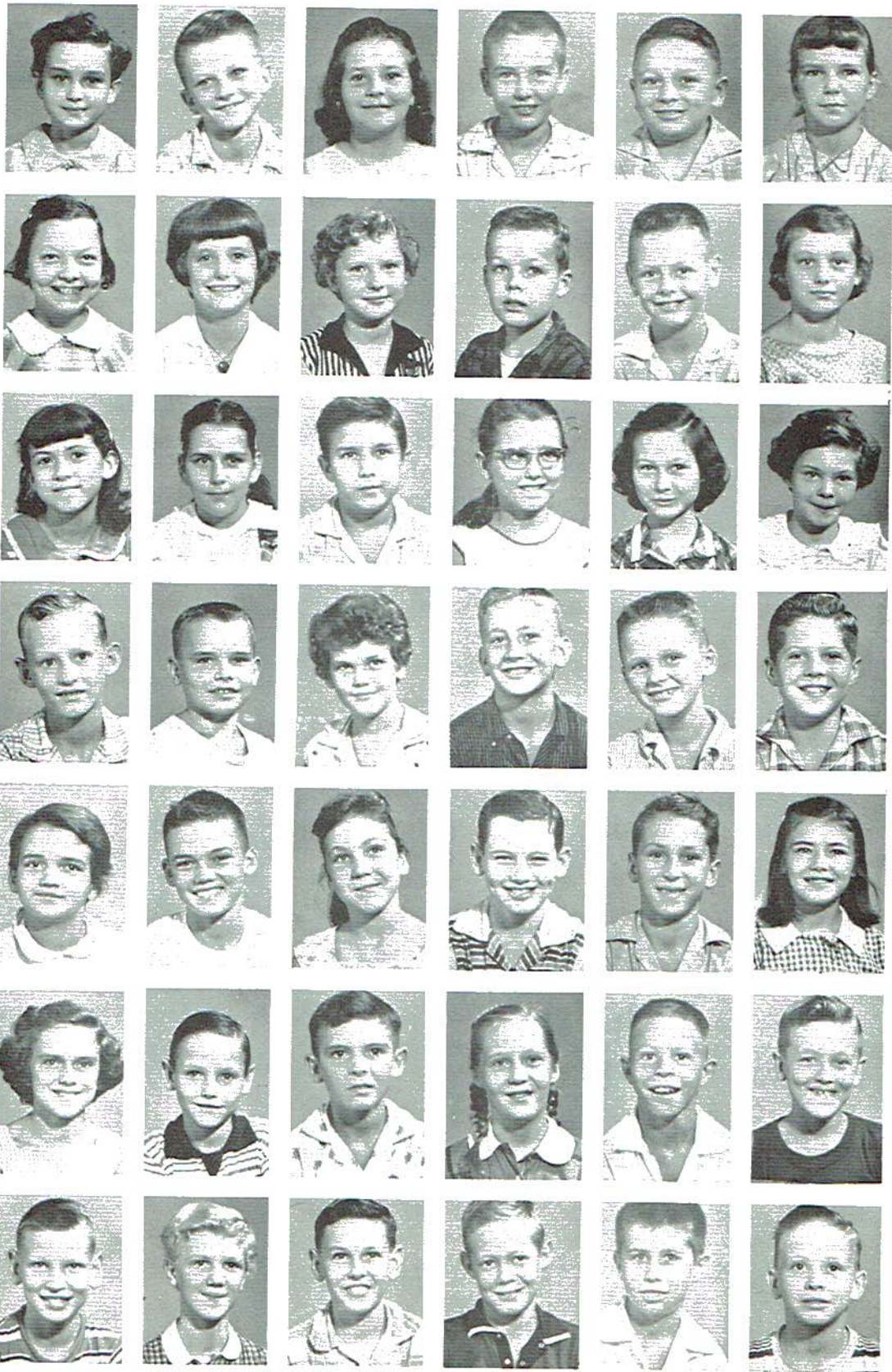
Walters, Rosa Nell
 Warden, Jackie
 Weeks, Stanley
 White, Kenneth
 Witt, Catherine



Young, Chris



FIFTH GRADE



Anthony, May
Asherbram
Edwin
Arnold, G
Baker, Ke
Barham, C
Barnes, Ba

Breedlove
Brewer, L
Burrows, B
Burton, Ro
Carver, Le
Cash, Lol

Castle, Ma
Chance, J
Cooper, J
Crabtree,
Dixon, Ca
Flippo, An

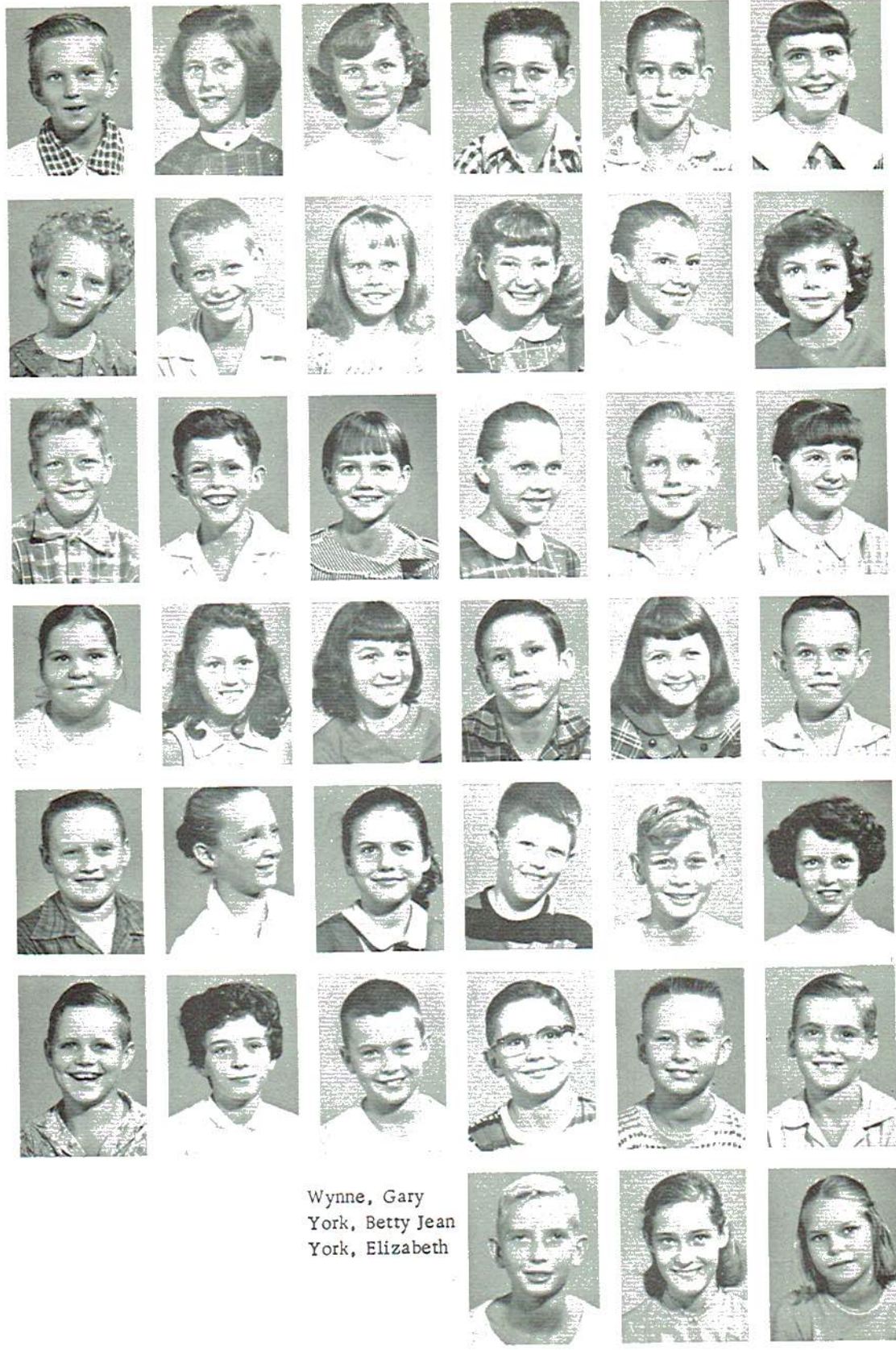
Gill, Jerry
Headrick,
Henegar,
Henson, J
Hill, Glen
Hughes, F

Jackson, C
Jones, Gra
Kemp, Sh
Lawhenore
Lawson, L
Long, Don

Marsh, M
Mason, W
Matthis, B
Matthews,
McCloud,
McCrary,

McMillan
Moore, Ju
Myers, Br
Nobles, C
Payne, Bo
Payne, Ed

Leon
 Linda
 Geneva
 Robert
 Bill
 Linda
 Janice
 Buster
 Muriel
 Anna Fay
 Edith
 Martha
 Gary
 Earnest
 Gloria
 Jane
 Paul
 Mary
 Mary
 Georgia
 Alvina
 J. W.
 Virginia
 Doug
 Houston
 Sara
 Frances
 Cecil
 Wayne
 Patsy
 Harold
 Janice
 Mickey
 Phil
 Richard
 Ricky
 Wynne, Gary
 York, Betty Jean
 York, Elizabeth
 McMillan,
 Moore, June
 Myers, Bruce
 Nobles, Charles
 Payne, Bobbie
 Payne, Eddie



Not Pictured: Bates, Joanna; Goff, Opal; Horton, Betty; Moore, Sharron; Payne, Glenda Gale; Peters, Mary Jo; Rogers, Candice; Weeks, William.

FOUR GRAD



Akin, James
 Allison, She
 Atkins, Carl
 Baker, Billy
 Barham, Edw
 Berry, Samuel
 Brown, Sharo
 Burton, Joyce
 Campbell, Ro
 Carlisle, Joy
 Case, Paul
 Cates, Kay
 Clemons, Jud
 Click, Bobby
 Coburn, Bonn
 Colvin, Betty
 Colvin, Thom
 Cooper, Jack
 Cooper, Jame
 Crawford, Ric
 Dixon, Peggy
 Foshee, Way
 Gill, Janice
 Gilliland, Ga
 Grice, Harry
 Guess, Virgin
 Guffey, Bessie
 Henegar, Pau
 Henson, Jimm
 Hill, Berneda
 Hooper, Edwa
 Hughes, Glen
 Jacobs, Elizab
 Jacobs, Jane
 Johnson, Billie
 Junior, Roger
 Lawhorne, Bo
 Loyd John Dav
 Massey, Billy
 Maynor, Lind
 McCarver, Ja
 McCrary, Dan
 McLemore, B
 Murray, Barba
 Noble, Micke
 Norman, Hou
 Norman, Mar
 Poe, Lawrence

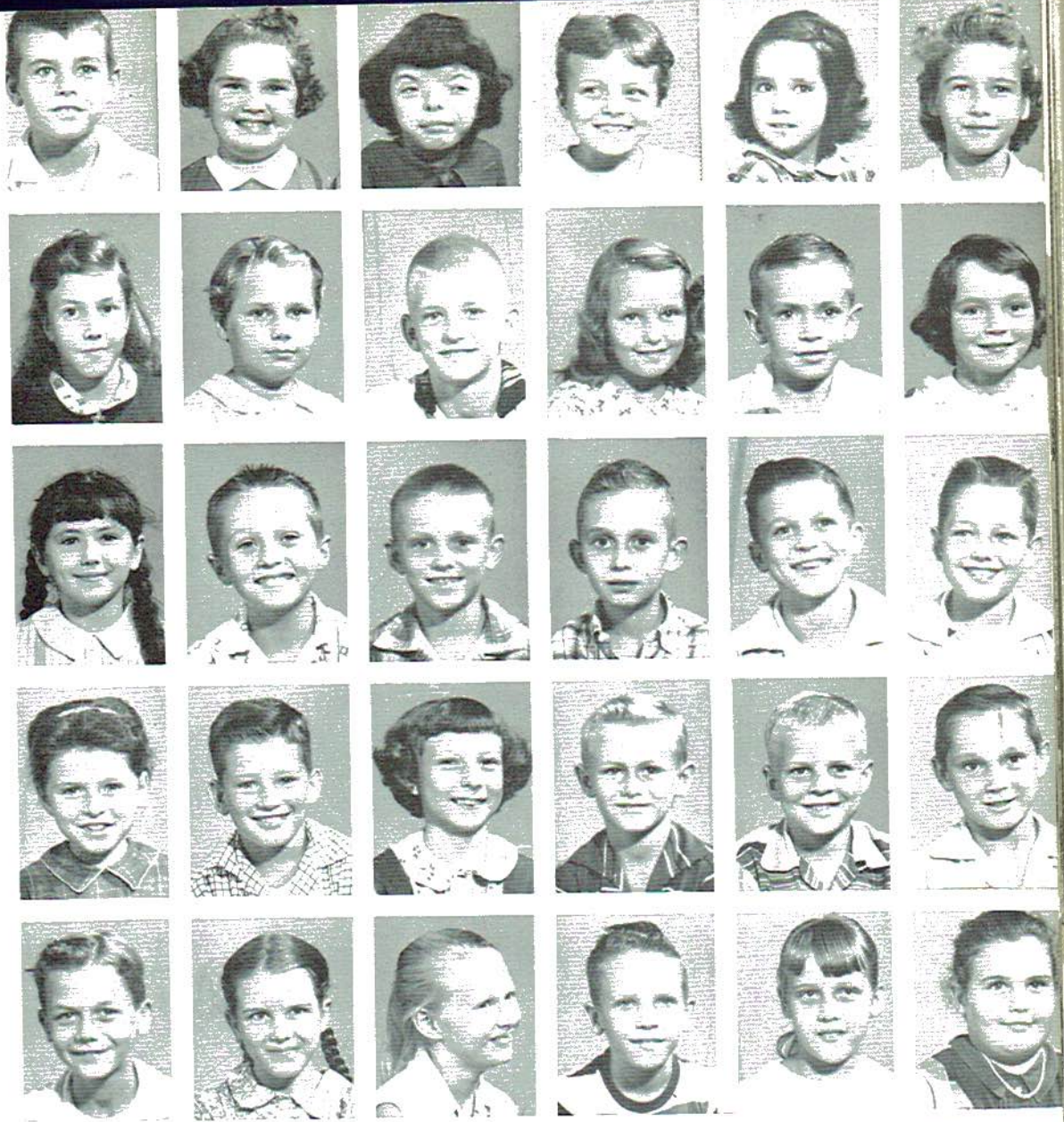
**URT
AD**

James L.
n, Sheila
s, Carl M.
, Billy Joe
m, Edward
, Samuel
, Sharon
n, Joyce
obell, Rob
sle, Joy
, Paul
s, Kay
ons, Judy
k, Bobby
rn, Bonnie
in, Betty A
in, Thoma
ber, Jackie
per, James
wford, Riddle
on, Peggy J
ee, Wayne
, Janice
iland, Gary
ce, Harry
ss, Virginia
fey, Bessie
egar, Paul
ason, Jimmy
l, Berneda K
oper, Edward
ghes, Glenda
obs, Elizabeth
obs, Jane
nson, Billie
rior, Roger

awhorne, Bob
oyd John Davi
assey, Billy B
aynor, Linda
McCarver, Jani
McCrary, Dary

McLemore, Bil
Murray, Barba
Noble, Mickey
Norman, Hous
Norman, Mary
Poe, Lawrence

Harold
Catherine
Patricia
Betty
Christine
Lydia
Jane
Shirley Jean
Jimmy
Mary
Miles
Shirley
Dene
Kelly
Larry
Leonard
Jimmy F.
Larry
Brenda
Ronald
Sheila
Carl Wayne
James
James
Richard C.
Susie
Linda
Beanie C.
Judith
Sharon Gail



Not Pictured: Arledge, Rushie; Cooper, Sarah; Durham, Charles; Gay, Anita; Helton, Christine; Holder, Charles; Hughes, Sandra; Kirkpatrick, Wanda; Lambert, Linda; McCrary, Wayne; McLemore, Howard; Merritt, Jorace; Morris, Mary E.; Ragan, Dallas; Sampley, Ann; Steele, Ronald; Wear, Merrellyn.

York, Susan



THIRD GRADE

Gerald
Linda
Sandra
Wyonnia
Brenda Sue
Pat

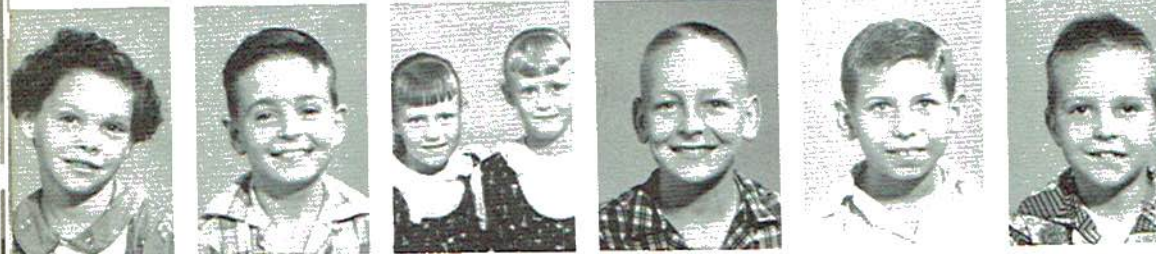




Cash, Sam
Castle, Sarah
Chance, Paul
Coffelt, Jack
Coffelt, Janice
Crabtree, Ron



Crabtree, Walter
Crouch, Billy
Dawson, James
Dobbins, Bill
Elkins, Sheila
Evans, Ardwa



Flippo, Rose
Garland, Lani
Gill, Linda &
Gothard, Carl
Grider, Glen
Hogwood, Ch



Holder, Ken
Janeway, Har
Johnson, Jud
Jones, Phil
Lambert, An
Lee, Katy L



Lee, Ronnie
Long, James
Lyda, Har
Mayo, Chan
McCloud, A
McCurdy, T



McDonald, B
McMillan, B
Middleton, B
Moore, Don
Owens, Cam
Poe, Rayfo



Raulston, B
Raulston, S
Raulston, W
Rhymer, B
Rowe, Del
Sanderson, B



Sisk, Ina
Sloan, Jam
Spangler, B
Spangler, B
Stevens, B
Steward, B

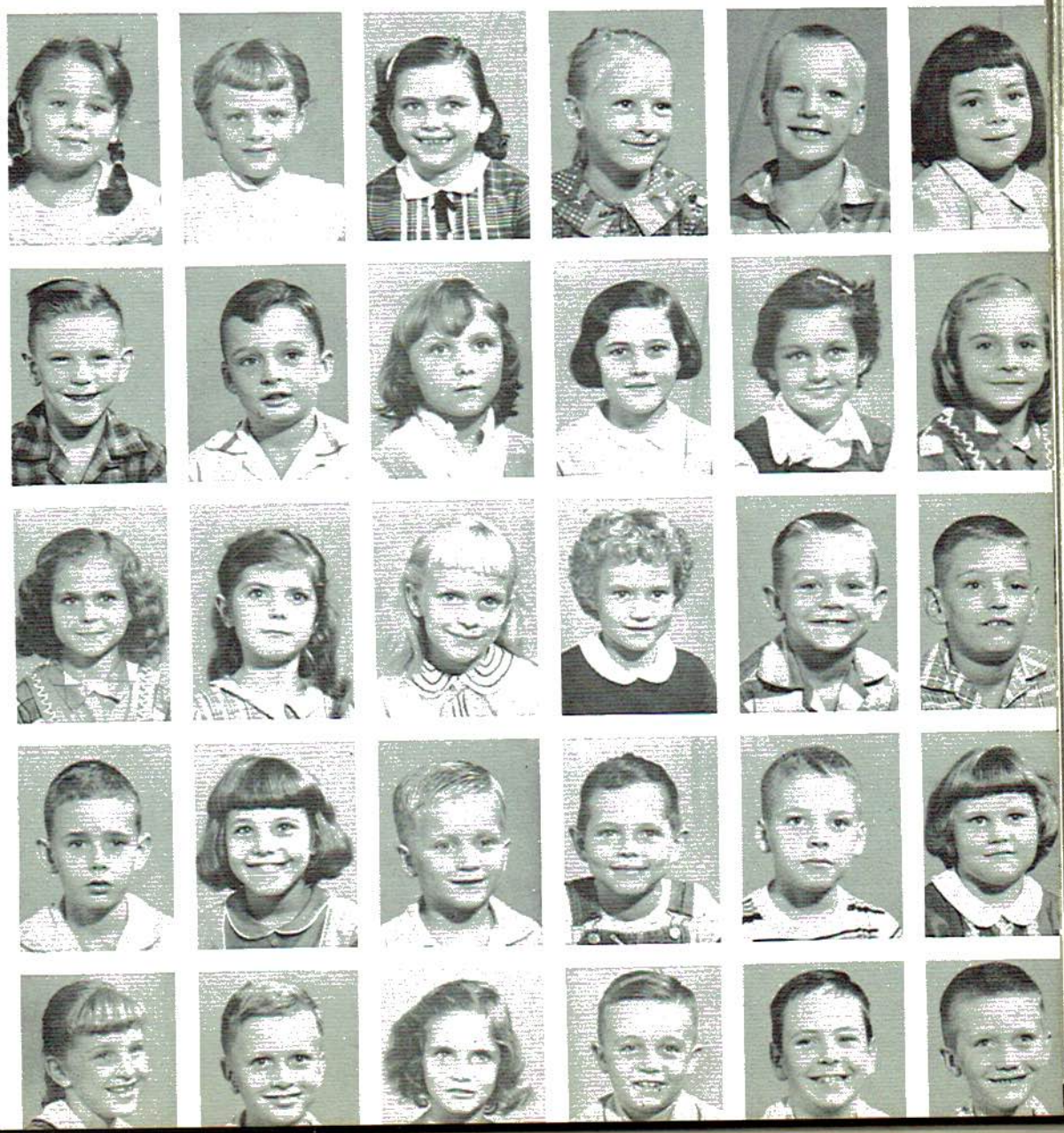
h
 ulette
 ky
 ice
 onnie
 Wayne
 ly
 mes M
 illy Joe
 ila Ann
 way
 setta
 amar
 a & Sue
 Carl
 en
 Charle
 Kenneth
 Harold
 Judy
 il
 Ann
 y Lou
 nie
 mes E.
 arold
 Charles
 d, Alton
 y, Thom
 ld, Joy
 an, Bern
 on, Ham
 Don
 Carol
 yford
 n, Ronal
 n, Sandr
 on, Vicky
 r, Bobby
 Delmus
 on, Reita
 ina Mae
 James
 ler, Jame
 ler, Sue
 ns, Betty
 rd, Ralph

omas, James
 omas, Paul
 ay, Fred
 ur, George
 moreland, Nancy
 ure, Andrew
 illis, Kenny
 ilson, Elizabeth
 ise, Edna
 irt, Jerry D.
 oody, Sandra K.
 rander, Melinda
 ilson, Carolyn
 onthony, Lucille
 own, Mary Edith
 onnette, Jimmy
 e, Martha
 ates, Richard
 illins, James
 aper, Barbara
 ranch, Faye
 aughtry, Barbara
 ans, Freida
 ans, Seble
 ee, Nancy
 and, Donna Kay
 arhard, Denise
 arhard, Dexter
 arhard, James
 er, Donnie
 er, Linda
 ans, Larry
 eay, Janus
 on, William
 enegar, Patricia
 er, Deborah
 on, Mac
 eward, Carolyn
 ighes, Carolyn
 ighes, Tommy
 onson, Franklin
 onson, James D.



Not Pictured: Clemons, Rickey; Daughtry, Barbara; Gay, Michael; Henegar, Roy; Headrick, Michael; Meeks, Annie; Purdy, Kenneth; Randolph, Carolyn; Steele, Leon; Ware, Willard; White, Charlotte; White, Mitchell.

SECOND GRADE





Jones, Lydia
 Junior, Ram
 Kemp, Barb
 Kirk, Sheila
 Knight, John
 Ledbetter,

Little, Robert
 Marsh, Bill
 Mathis, Cecil
 Matthews, James
 McCrary, James
 McDowell,

Morris, Sheila
 Moss, Randall
 Payne, Alden
 Peacock, Barbara
 Phillips, Joyce
 Pitassi, Tim

Poe, Shirley
 Powell, Ray
 Richard, William
 Rorex, Brenda
 Rowe, Susan
 Rowland, Barbara

Samples, James
 Smith, Robert
 Stevens, Carolyn
 Stewart, Lanna
 Studdard, Mable
 Thomas, Kay

Thomas, Wesley
 Todd, Joe
 Toney, Donald
 Troxell, Edward
 Vinson, Carolyn
 Walker, Brenda

Warr, Charles
 Weeks, Lois
 Westmoreland
 Carolyn
 White, Larry
 Williams, Robert
 Wilson, Kay

Sherry
 Burnett
 Nadine
 Linda
 Diane
 Junior

Wise, Dimple
 York, Johnny
 York, Marvin

Not Pictured: Coffman, Jimmy; Crutchfield, Jane
 Hipp, Patsy; Hughes, Judy A.; Hurst, William; Ma
 thews, Ronnie; McGuire, James; Morris, Sheila; W
 Sam Jay.

Lydia
Randy
Barbara
Sheila
John H.
er, Robert

Robert
Billy
Cecil
ws, James
y, John
ell, James

Sheila
Randy
Aldonna
ck, Benny
os, Joyce
Timothy

Shirley
ll, Ray
rd, William
; Brenda
Susan
and, Billy

oles, James
h, Robert
ens, Carol
art, Lane
ard, Mike
mas, Kay

mas, Wend
d, Joe
ey, Donald
kell, Edward
son, Carol
ker, Brenda

er, Charlene
eks, Lois
stmoreland,
Carolyn
ite, Larry
Williams, Ruth
lson, Kay

field, Jane
William; Ma
Sheila; Wes

artin, Kathy
ary, Ricky
lton, Norma
arle, Jackie
arle, Johnny
arle, Wanda

ick, Robert
ates, Steve
uffelt, George
emper, Donna
antree, Vicki
awford, Roy

auch, Ronnie
aghty, Roy
ava, Catherine
aris, Gary
awkins, Gary
ason, Johnnie

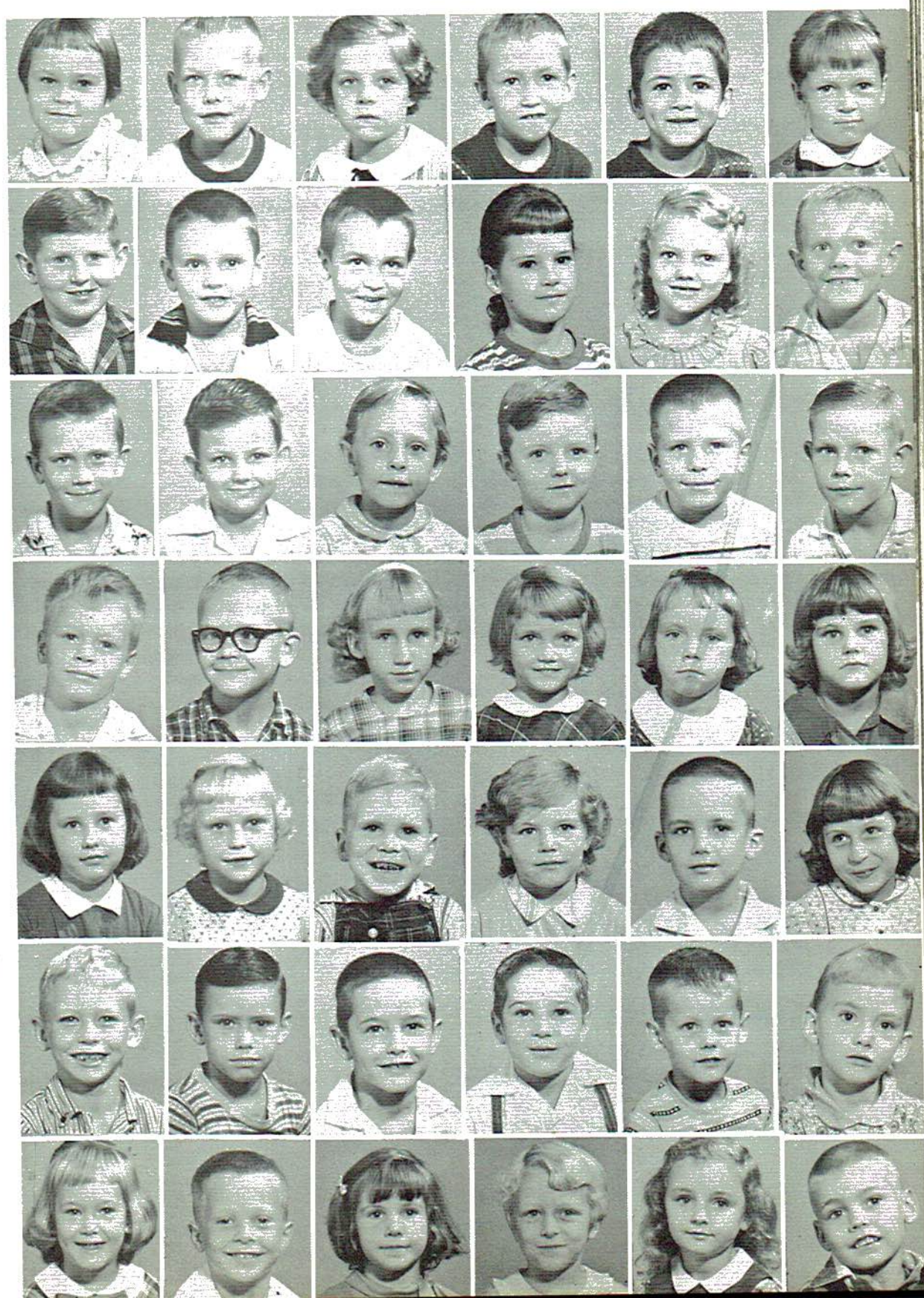
lgo, Bobby
ard, Eugene
ans, Patty
ans, Sheila
lley, Linda Sue
egar, Linda

ll, Judy
wood, Patricia
ard, J.C.
ages, Sheila
ans, Sandy
away, Sandra

ney, Bobbie Ray
mann, Clifford
th, Jimmy
mann, Ben
n, Kevin
n, Paula

mann, Sherry
lmond, Burnette
lardy, Nadine
owell, Linda
leton, Diane
n, Junior

FIRST GRADE





Payne, Jon
 Peacock, W
 Raulston, J
 Kay
 Ridley, A
 Roberts, P
 Lee
 Rowe, C
 Rowe, L
 Faye
 Sapp, Tom
 Short, W
 Smith, C
 Smith, K
 Ann
 Smith, R
 Smith, T
 Lee
 Stewart, P
 Stone, C
 Taylor, B
 Thomas, L
 Thomas, L

Thomas, P
 Triplett, C
 Walters, B
 Wilson, J
 Woody, N
 York, L

Not Pictured:
 Atkins, Clayton
 Britton, Ray
 Coffman, Steven
 Meeks, Brenda
 Rogers, Rose
 Rogers, Terry
 Sampley, Dana;
 Sanderson, Billy



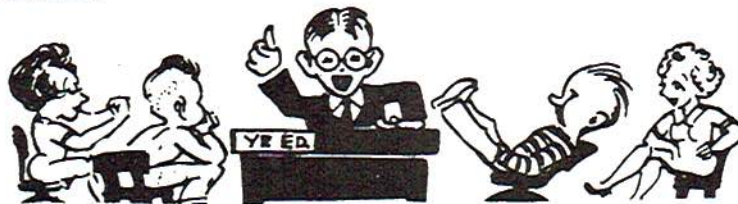
STUDENT TEACHERS



Johnny Palmer
 Inda Witt
 Sharron Paris
 Joanna Johnson
 Judy Smith
 Ann Henson
 Rose Walker
 Linda Nevels
 Linda Scissom
 Susie Durham
 Ruby Lawson
 Jane McCrary
 Clara Gill
 Frances Maynor
 Imogene Steele
 Elizabeth Allison
 Nancy Coffman
 Elizabeth Hammons

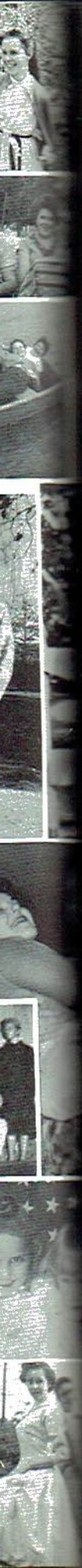
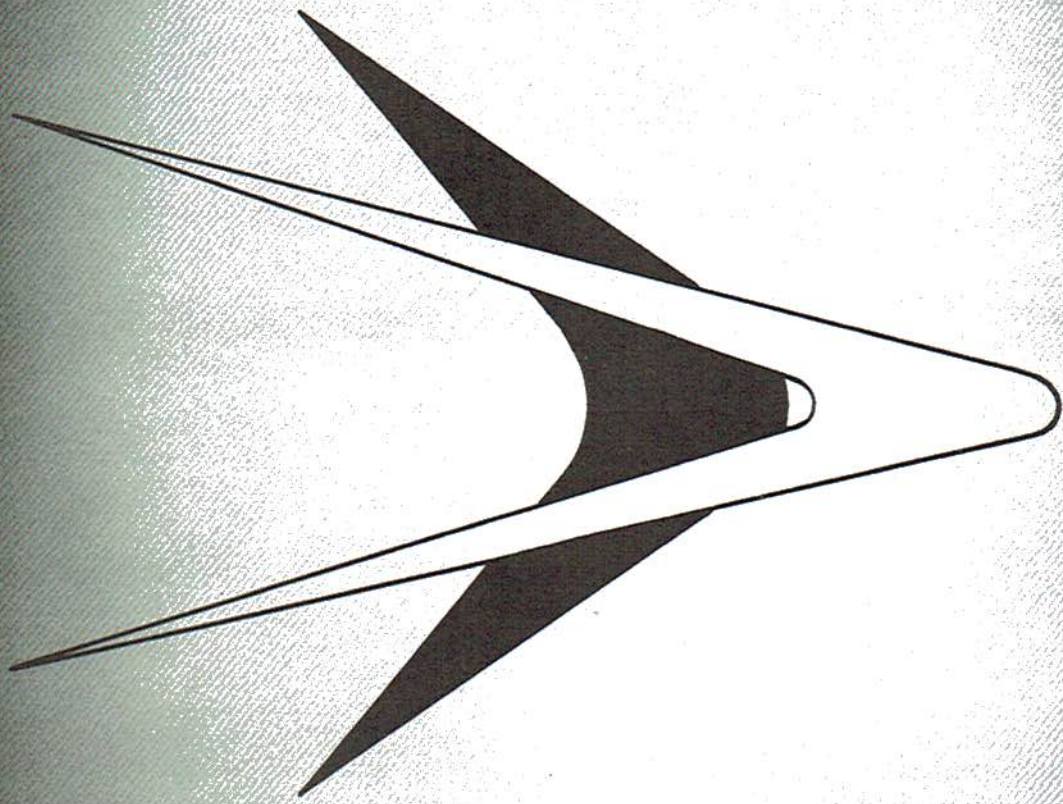


Carl Foshee
 Donald Ragan
 Judy Runyan
 Susie Hall
 Patsy Smith
 Wanda Mason
 Doris Elliott
 LaCrystal Thomas
 Mary Ruth Knott
 Sidney Toney
 Nancy Rorex
 Rosemary Warren
 Doris Ragan
 Dorothy Rorex
 Janie Walker
 Bobby Whitten
 Jerry Duke

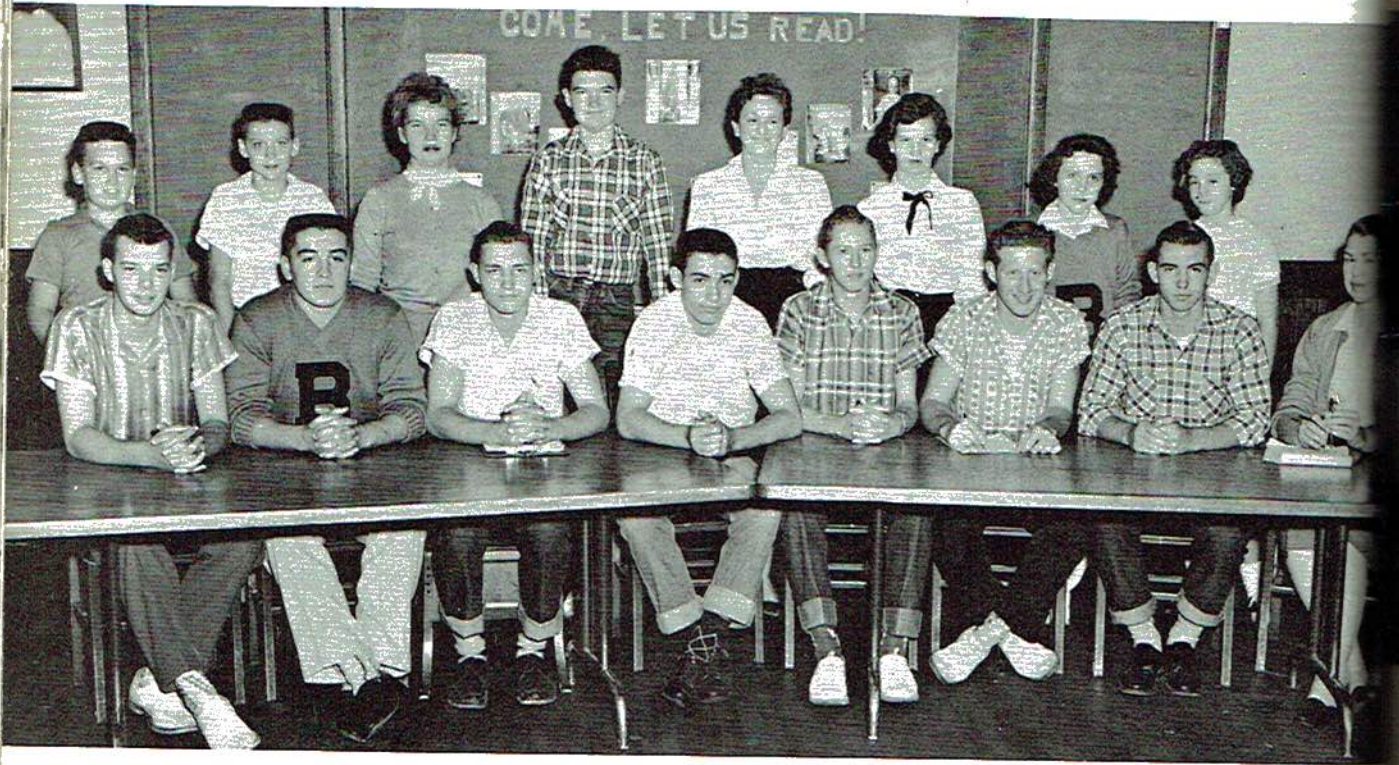




A
C
T
I
V
I
T
I
E
S



STUDENT COUNCIL



OFFICERS

President Buddy Wilson
Vice-President Charles Smith
Secretary-Treasurer Flavil Wear

REPRESENTATIVES

SENIOR
Roy Thomas
Jimmy Loyd

JUNIOR
C. N. Gothard
Mickey Young

SOPHOMORE
Carolyn Peoples
Jackie Jones

FRESHMAN
Martha Gunter
Edna Janeway

EIGHTH
Johnny Palmer
Sherry Thomas

SEVENTH
Dorothy Williams
Richard Howell

The Student Council is a non-secretive organization established in order to provide for student participation in school government, establish better understanding between faculty and students, afford training in citizenship and insure a sincere respect for law and order.

BETA CLUB



PRESIDENT
Bobby Whitten



VICE-PRESIDENT
Wanda Mason



SECRETARY
Patsy Smith



TREASURER
Mickey Young

B.H.S. BETA CLUB

REPORTERS: Gloria Helton, Judy Lea

Akin, Shirley
Brown, Jane
Browning, Brenda
Crownover, Laura
Henson, Ann
Hise, Sherry

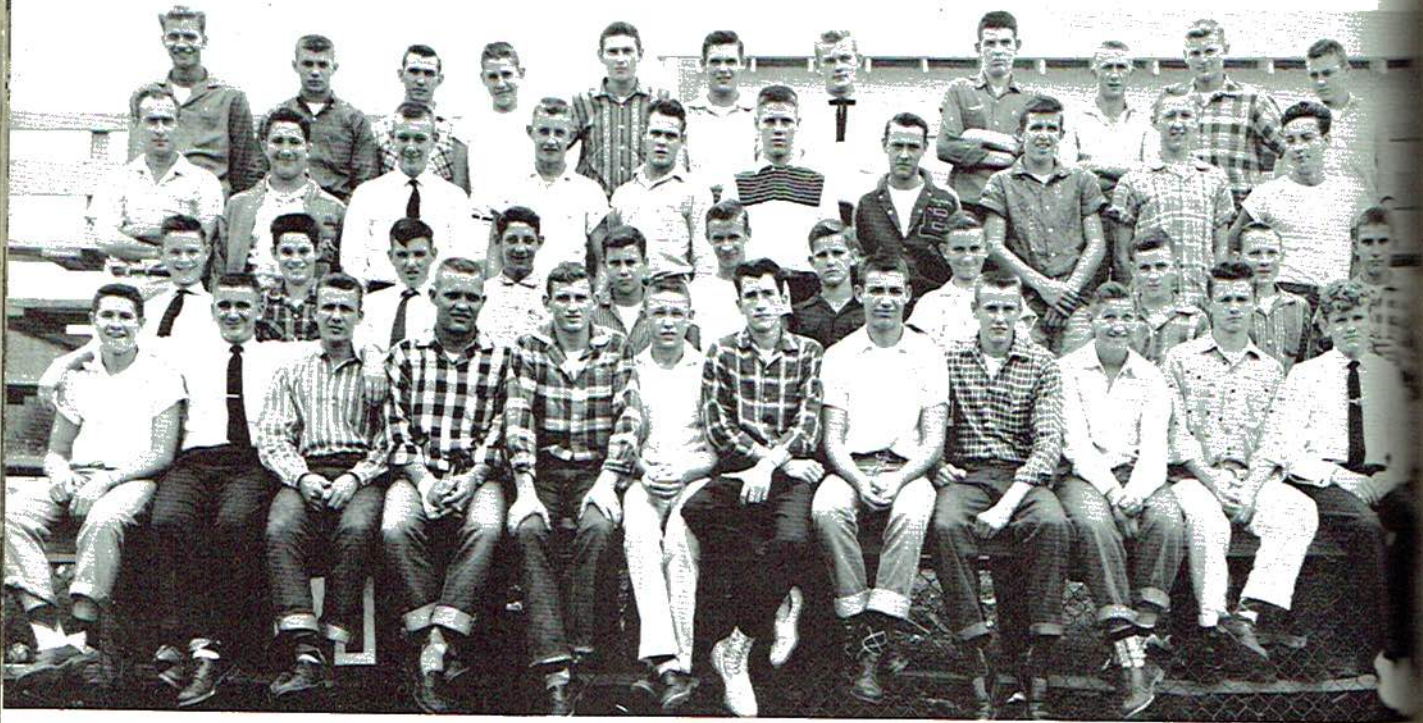
Jones, Jackie
Keys, Elizabeth
Lee, Bobby
Loyd, Jimmy
McDowell, Carolyn
Randolph, Susie

SPONSOR: Neil C. Knox

Raulston, Dava
Richardson, Emma
Rogers, Irma
Rogers, Jeanne
Scissom, Carolyn
Scissom, Sandra

Sebring, Frances
Smith, Judy
Smith, Susan
Steele, Jean
Studdard, Judy
Thompson, Nancy
Wear, Flavil

F.F.A.



President William Crawford
 Vice-President Arnette Ridley
 Secretary Johnny Gunter

Treasurer C. N. Gothard
 Sentinel..... Wendell Raulston
 Reporter..... Edmond Lawhorne

F.F.A. SWEETHEART

Leon Matthis
 William Crawford
 Arnette Ridley
 W. B. Gothard
 Johnny Gunter
 Wendell Raulston
 Edmond Lawhorne
 Buddy Wilson
 Kenneth Thomas
 Johnny McCrary
 Charles Palmer
 Donald Ragan
 Billy Steele
 William Vinson
 Morris Haynie
 Dickie McMillan
 John Walter Ridley
 Charles Bass
 Kenneth Olinger
 Howard Blevins
 Billy Bynum
 Kenneth Burrows



Susie Hall

Tommy Rogers
 Mr. William Freeman, Advisor
 James Steele
 Jimmy Nowlin
 Clyde Raulston
 Kenneth Hart
 Kenneth Cooper
 Jerry Duke
 Wendell Smith
 Charles Smith
 Cecil Kindred
 Bobby Wells
 Charles Vinson
 Roy Hugh Thomas
 Richard Abbott
 Eugene Burton
 Bruce Coffman
 John Henegar
 Carl Foshee
 Charles Pemberton
 Thomas Click
 Robert Bynum



Richard
Paulston
Whorne

Freeman, Adv

r

mas

t

erton



Sharron Paris



Bitsy Matthews, Head Cheerleader



Carolyn McDowell



C
H
E
E
R
L
E
A
D
E
R
S



Susan Smith



Sherry Thomas



Judy Lea

BLUE



GOLD

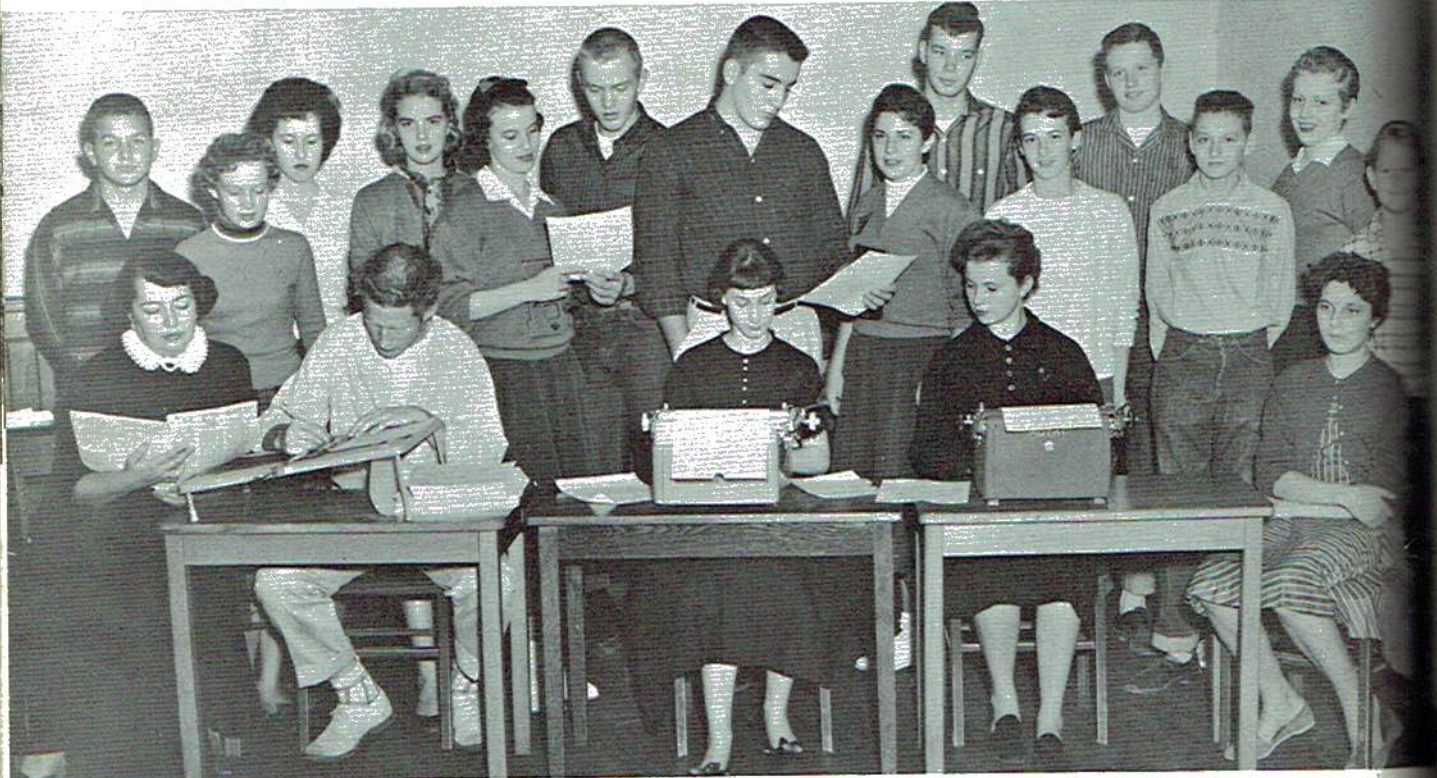
Bridgeport High

January 20, 1958

SENIOR PLAY PERFECT

3 BHS. BAND MEMBERS MAKE ALL-STATE

HART & COFFMAN '58 CAPTS



Sponsor
Mrs. Maryadel Grice

State C.H.A. Historian will attend officers workshop at Alabama

- Hom Thom
 - Poole s Ger
 - Carol Oliv
 - . Got
 - annin Cobi
 - r-Sus
 - Gyle
 - , R
 - John
 - od-
- Editor-in-Chief Brenda Browning
 - Associate Susie Randolph
 - Business Manager Jimmy Loyd
 - Assistant Don Loyd
 - Production Manager Kyle Matthews
 - Circulation Manager Charles Palmer
 - Assistant Sharron Paris
 - Feature Editor Bitsy Matthews
 - Assistant Carolyn McDowell
 - Society Editor Judy Lea
 - Sports Editor Mickey Young
 - Assistant C. N. Gothard
 - Sophomore Reporters Sandra Scissom
Pat Rowe
 - Freshman Reporters Hugh Randolph
Judy Runyan
 - Eighth Grade Reporter ... Martha Hughes
 - Grammar School Reporters Elaine Brown
Larry Lipham

TENC
Dolph

Band Concert was held at the school auditorium January 16.

Letters were also awarded at the banquet those receiving letters were Seniors-Paul Payne, Bobby Whitter, Roy H. Thomas, Jim Loyd, Carl Janeway, Arthur Reeves, Wendaulston, Buddy Wilson and Johnny Gunter. Under classmen- Bruce Joffman, Kenneth Har Eugene Burton, Warren Mitcher, Dobby Well, Carl Foshee, Mickey Young, Butch Wear, Jimmy Steele, C.N. Gothard, Benny Hill, Charles Smith, and Kenneth Thomas.

" APRIL 11

CHOSEN DATE

GLEE CLUB



Ann Cash
 Donna Lawson
 Johnny West
 Clara Janaway
 Alma Lee Steele
 Miss Jo Ann Austin, Director
 Sherry Hise
 Barbara Rogers
 Martha Gunter
 Ann Moore
 Ann Henson
 Susie Hall
 Judy Smith
 Joanna Johnson
 Fay Cookston
 Nancy Rorex
 Sandra Scissom

Judy Lea
 Betty Headrick
 Emma Richardson
 Bitsy Matthews
 Ruby Lawson
 Ruth Ann Elkins
 Dorothy Rorex
 Veda Warren
 John William Lewis
 Morris Haynie
 William Crawford
 Jimmy Nowlin
 John Henegar
 Donald Ragan
 Billy Steele
 Dennis McCloud
 Miss Joann Austin, Director

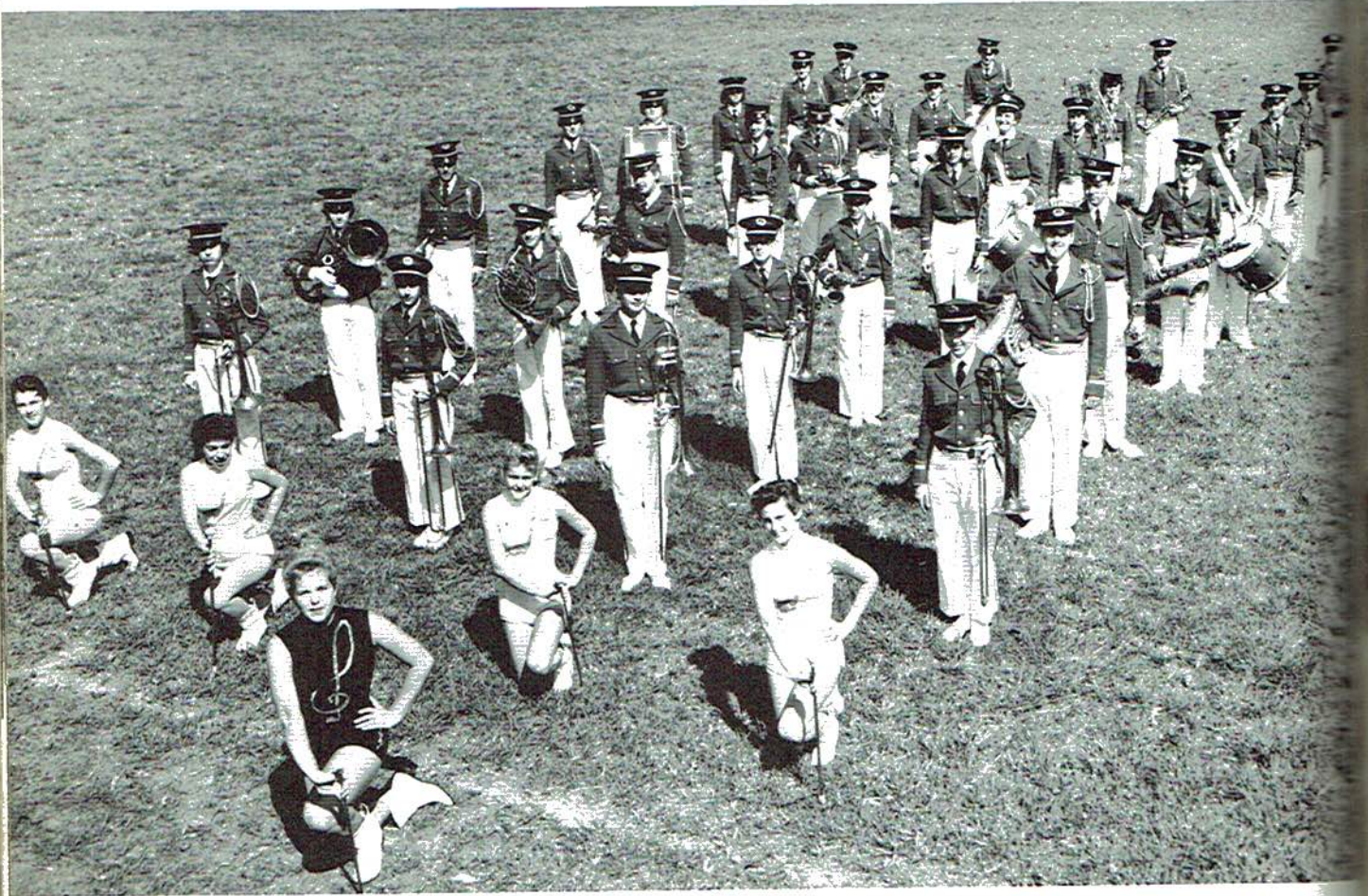


D
 58

N
 S
 ere als
 e banqu
 ng letter
 ons-Paul
 Whitter
 Jim
 Janeway
 Wendell
 y Wilson
 Gunter
 en- Bruce
 th Hart
 a, Warren
 by Wells
 Micker
 Wear, Jim
 I. Gothard
 Charles
 Kenne

11
 DATE

BRIDGEPORT HIGH SCHOOL BAND



TRUMPETS:

John T. Hughes
 Mary Ann Moore
 Bedford Allison
 Molly Burton
 David Williams
 Bill Payne

ANN WALKER

CLARINETS:

Jane Brown
 Jeanne Rogers
 Elizabeth Keys
 Pat Rowe
 Maurine Shaw
 Nancy Thompson
 Cecietta Witt

Janice Baine

Sue Crownover

SAXOPHONE:

Jackie Jones
 Joyce Moore
 Jerry Duke
 Kay Wilson
 Jerry Hise



Drum Major
 Frankie Campbell

TROMBONES:

Pat Smith
 Lois Sprong
 Irma Rogers
 Sarah Lanham
 Michael Payne

FLUTE AND PICCOLO:

Susie Hall
 Vicky Smith

HORN:

Mary Ann Roberts

FRENCH HORN:

Martha Gunter

DRUMS:

Betty Headrick
 Bass Drum

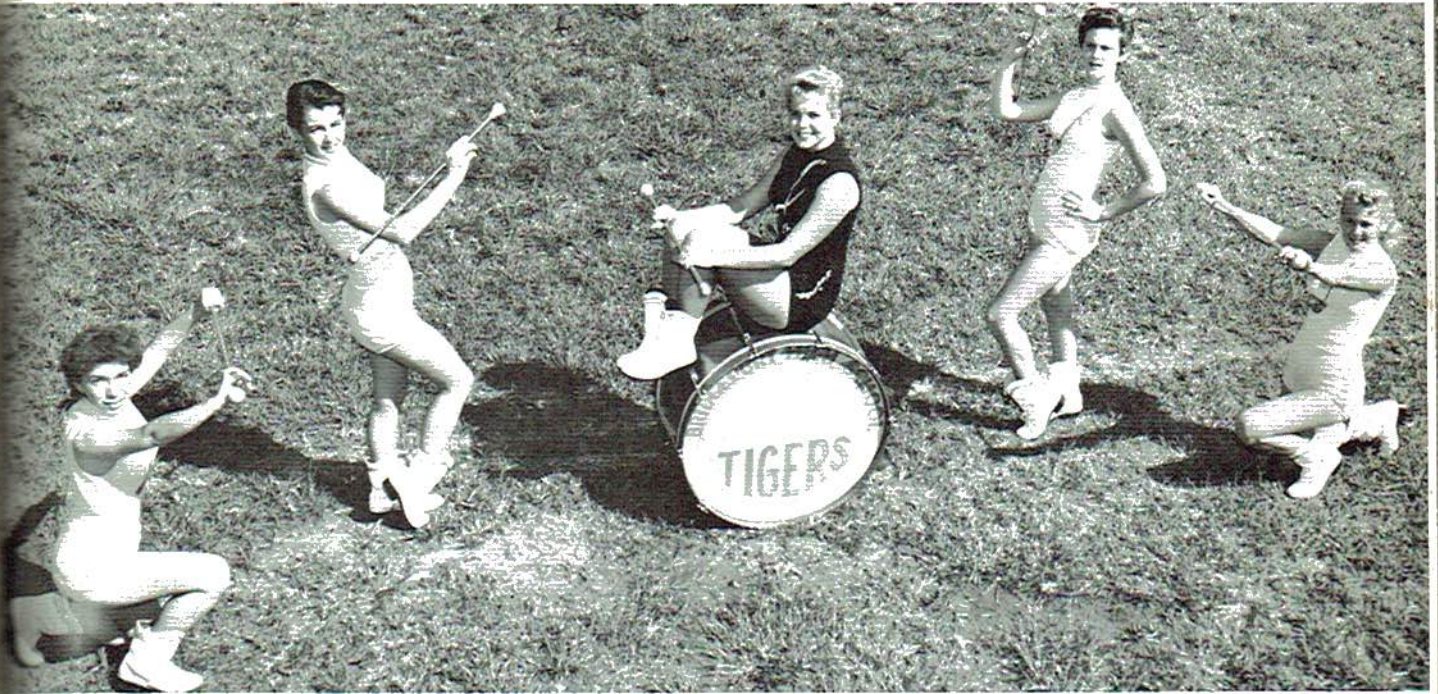
Bobby Lee

Snare Drum

Nelson Mason, Sandra Rogers
 Baritones

D

B.H.S. MAJORETTES



Sharron Waggoner; Judy Runyan; Head Majorette, Judy Smith; Carol Runyan; Judy Burrows.

HOMECOMING COURT




QUEEN: Judy Studdard - CAPTAIN: Roy Thomas
 ATTENDANTS: Sandra Scissom, Barbara Rogers, Susie Randolph
 CROWNBEARER: Lethia Thomas

O:

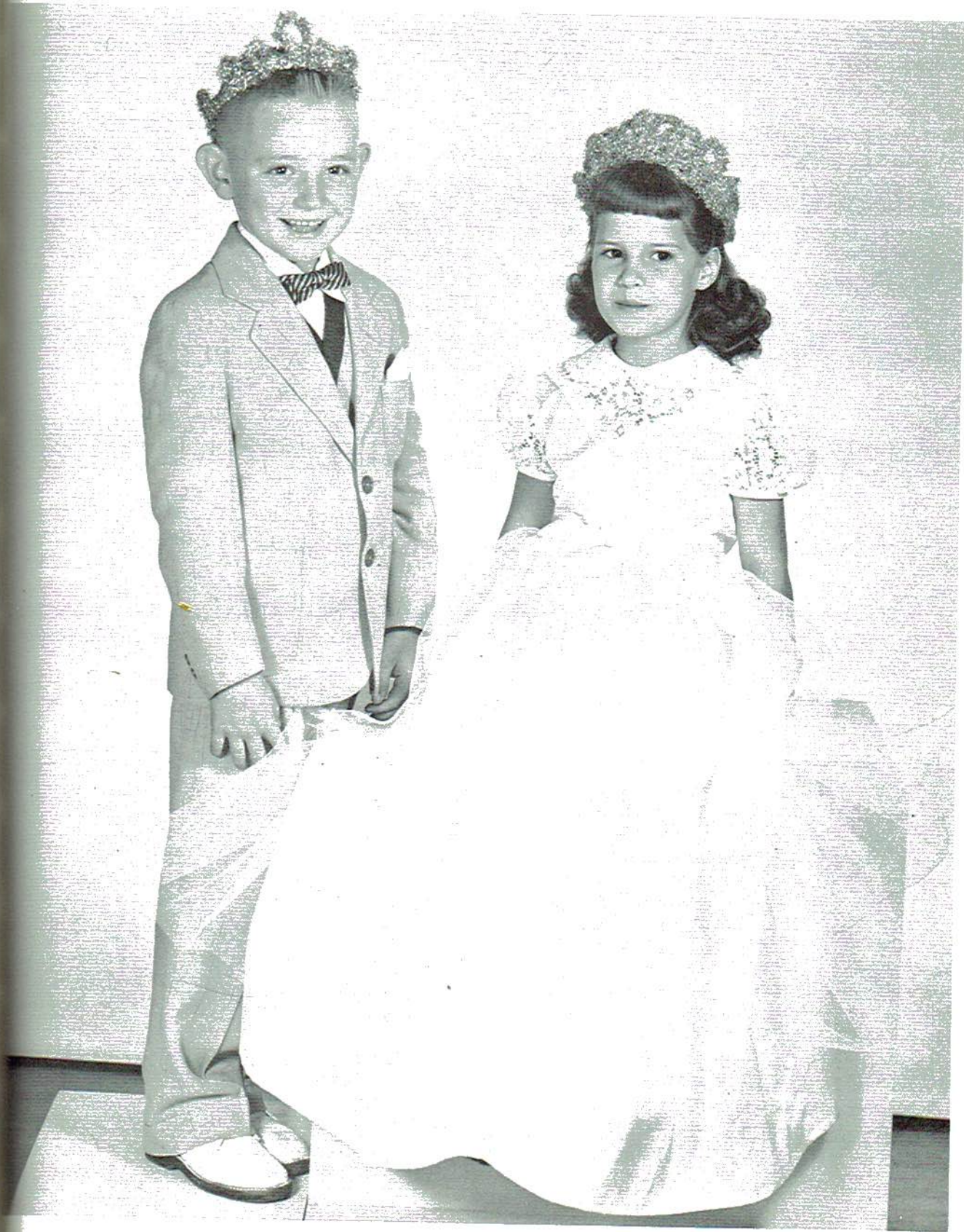
ra Rogers

MR. AND MISS B.H.S.



Paul Payne, Judy Smith

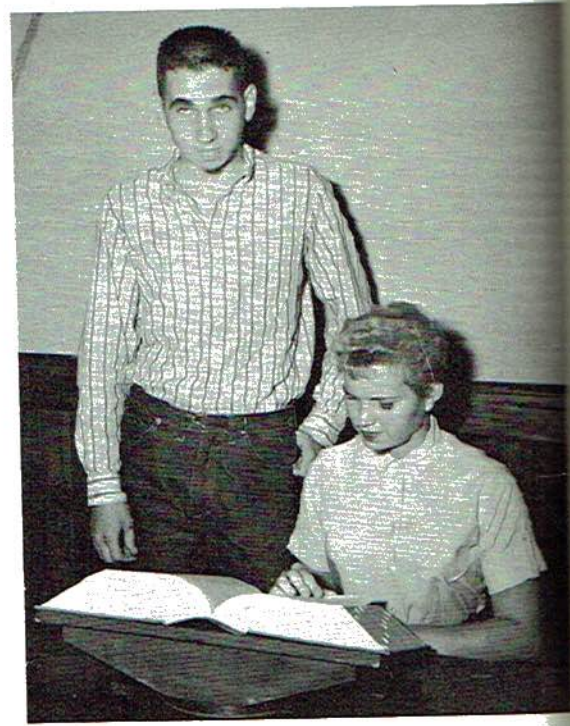
PRINCE AND PRINCESS



Jimmy Wilson, Donna Cooper



FRIENDLIEST
William Crawford, Patsy Smith



MOST LIKELY TO SUCCEED
Arthur Reeves, Judy Smith

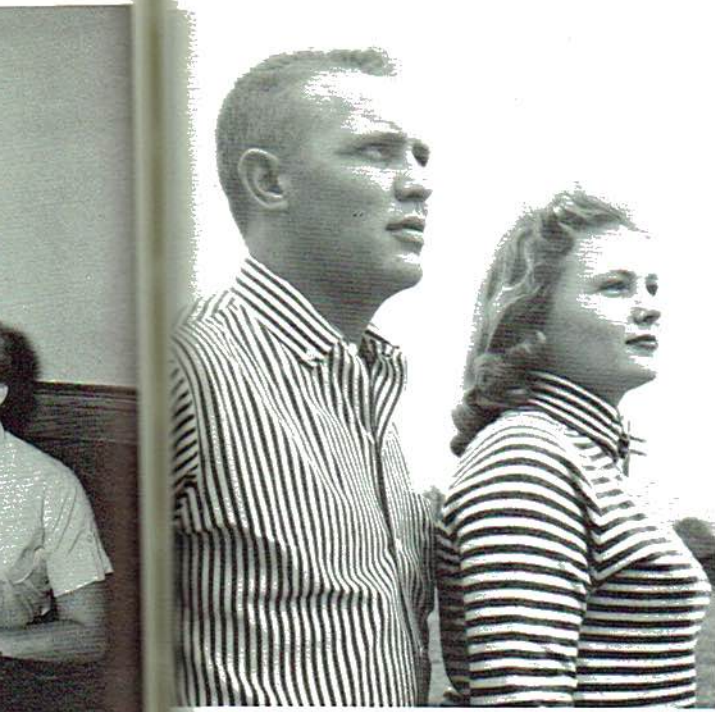
WHO'S WHO

BEST ALL ROUND
Bobby Whitten, Judy Studdard



MOST DEPENDABLE
Thomas Jackson, Susie Randolph





MOST HANDSOME AND PRETTIEST
W. B. Gothard, Elizabeth Allison

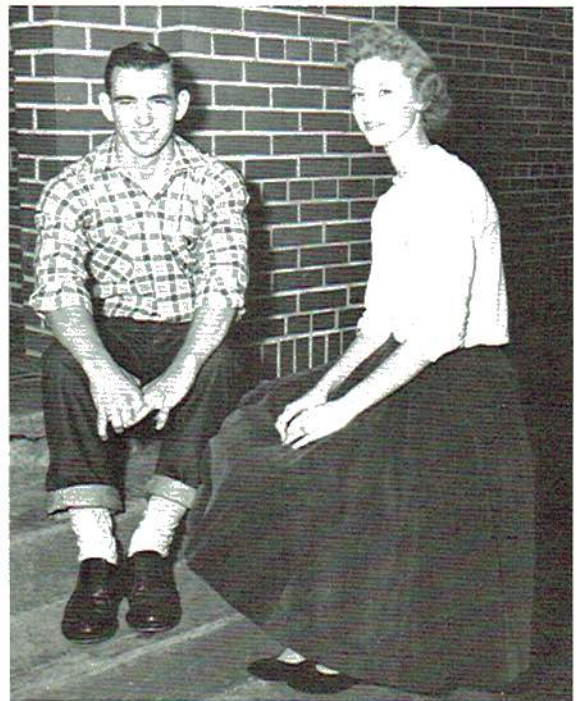
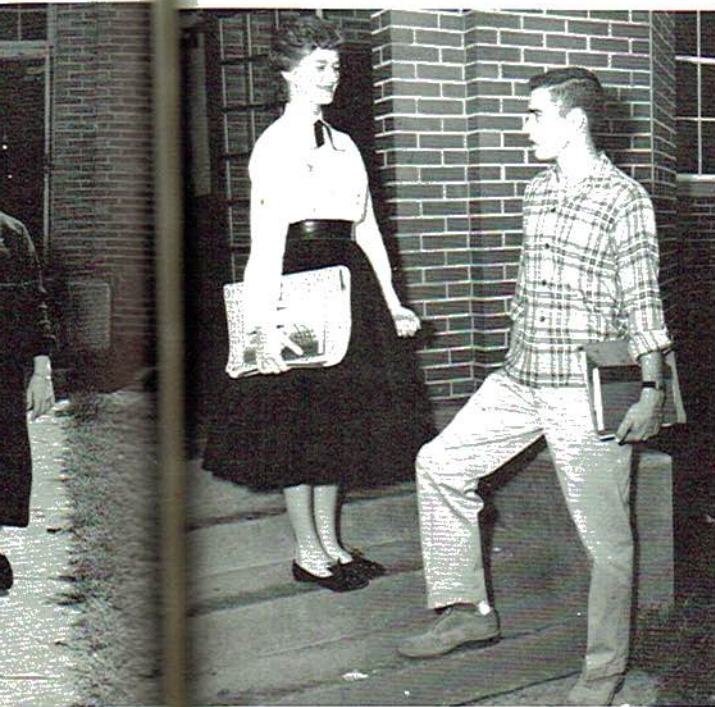


MOST STUDIOUS
Jimmy Loyd, Brenda Browning

WHO'S WHO

BEST DRESSED
Paul Payne, Susie Hall

MOST POPULAR
Roy Thomas, Sherry Hise





MOST ATHLETIC
Wendell Raulston, Wanda Guess



WITTIEST
Johnny Gunter, Joanna Johnson

WHO'S WHO

BEST PERSONALITY
Charles Palmer, Frances Maynor



QUIETEST
Edmond Lawhorne, Janie Walker



CLASS FAVORITES



FLIRTIEST

Frank Campbell, Bitsy Matthews



JUNIOR FAVORITES

Warren Whitcher, Sidney Toney

SOPHOMORE FAVORITES

Benny Hill, Lois Seale

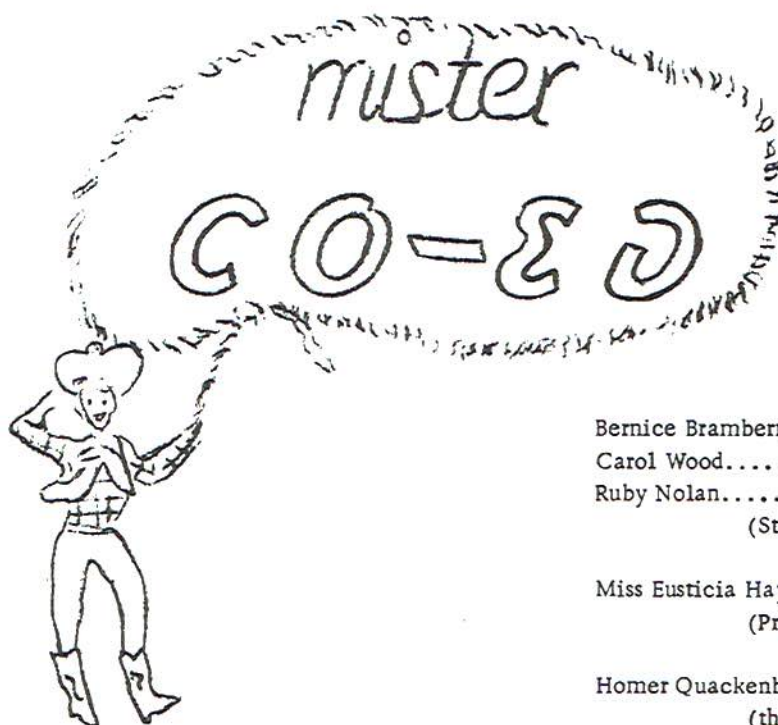


FRESHMAN FAVORITES

Johnny McLemore, Freeda Henegar



THE SENIOR CLASS
of
BRIDGEPORT HIGH
presents



EAST

Bernice Bramberry..... Pat Smith
Carol Wood..... Ann Henson
Ruby Nolan..... Joanna Johnson
(Students at Cedar Hill)

Miss Eusticia Hayworth..... Wanda Mason
(President of the College)

Homer Quackenbush..... William Crawford
(the Custodian, fond of Western Stories)

Miss Pauline Pooley..... Judy Smith
(Dedicated to building "fine, strong, healthy bodies")

Miss Geraldine Carr..... Carolyn Scisson
(Teaches English and "just lives" poetry)

Mr. Oliver Lee Oliver..... W. B. Gothard
(wealthy financier)

Emily Manning..... Clara Gill
(a freshman at Cedar Hill on scholarship)

Lotus Smith..... Jimmy Loyd
(from Skeleton Hole-somewhere out West)

Cobina Colgate-Brewster..... Susan Smith
(Lotus' grandmother and a trustee of Cedar Hill)

Gilbert Glycer..... Charles Palmer
(a modern English poet who composes with "spaces")

Extras - Sherry Hise, Elizabeth Allison, Dorothy Rorex
(Students at Cedar Hill)

SS

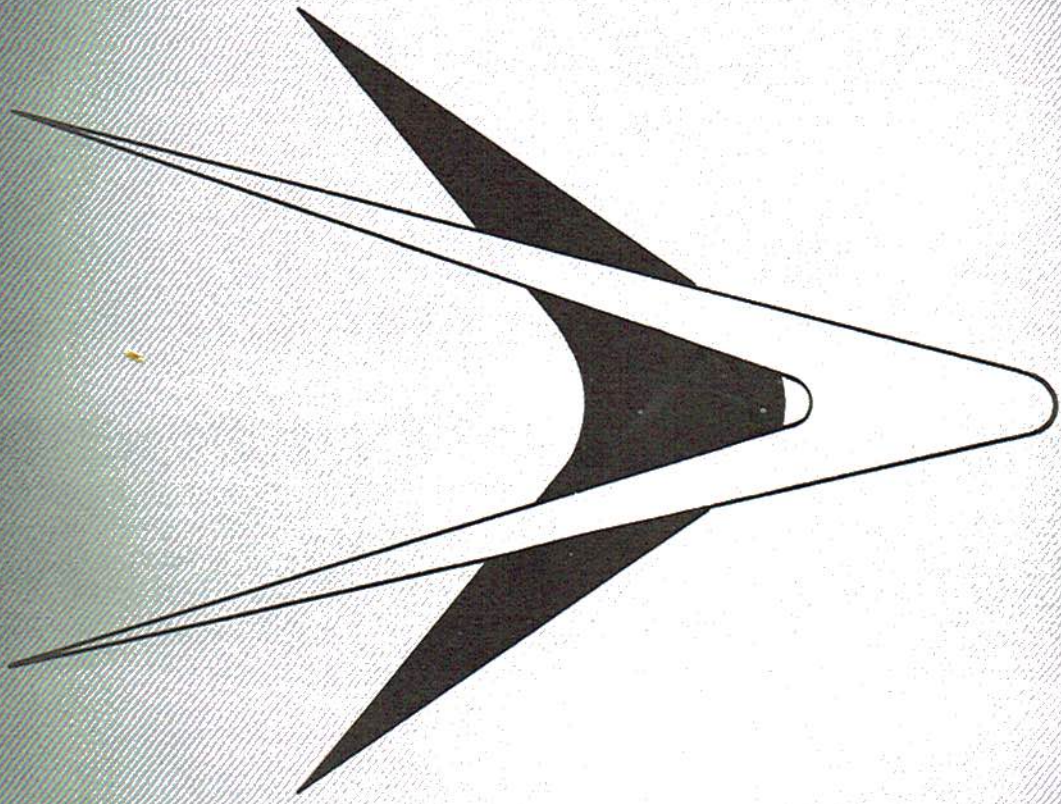
H

ason

on

awford

isson



A
T
H
L
E
T
I
C
S

YEA TIGERS!!



FRONT ROW: Butch Wear, Buddy Wilson, Johnny Gunter, Thomas Jackson, Bobby Whitten, Co-Captain; Roy Thomas, Captain; Paul Payne, Co-Captain; James Rowland, Jimmy Loyd, Wendell Raulston, James Steele. SECOND ROW: C. N. Gothard, Warren Witcher, Mickey Young, Kyle Matthews, Kenneth Hart, Eugene Burton, Bruce Coffman, Charles Smith, Jimmy Rook, Bobby Wells, Benny Hill, Jimmy McCrary. THIRD ROW: Carl Foshee, Dickey Crabtree, Johnny Jackson, Arthur Reeves, Clyde Raulston, J. B. Payne, Paul Killom, W. M. Randolph, Charley Smith, Carl Janeway, Kenneth Thomas. FOURTH ROW: Coach Robert Cox, Merle Bellomy, Manager; David Beck, Johnny McCrary, Donald Nowlin, Wayne Burrows, Bobby Steele, Arnette Ridley, Bedford Allison, Billy Loyd, Johnny Palmer.

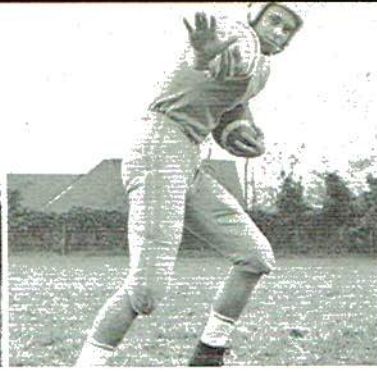
SENIOR SQUAD



Bobby Whitten, Buddy Wilson, Jimmy Loyd, Johnny Gunter, Wendell Raulston, Thomas Jackson, Roy Thomas, Paul Payne, Carl Janeway, Arthur Reeves.



Benny Hill



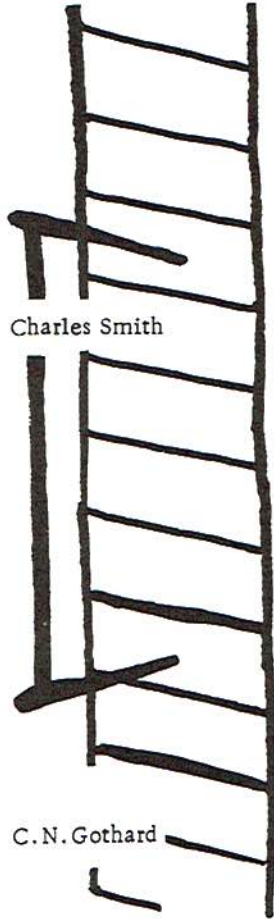
Kenneth Hart



Kyle Matthews



Arnette Ridley



Charles Smith



C. N. Gothard



Bobby Wells



Kenneth Thomas



James Rowland



Carl Foshee





Roy H. Thomas



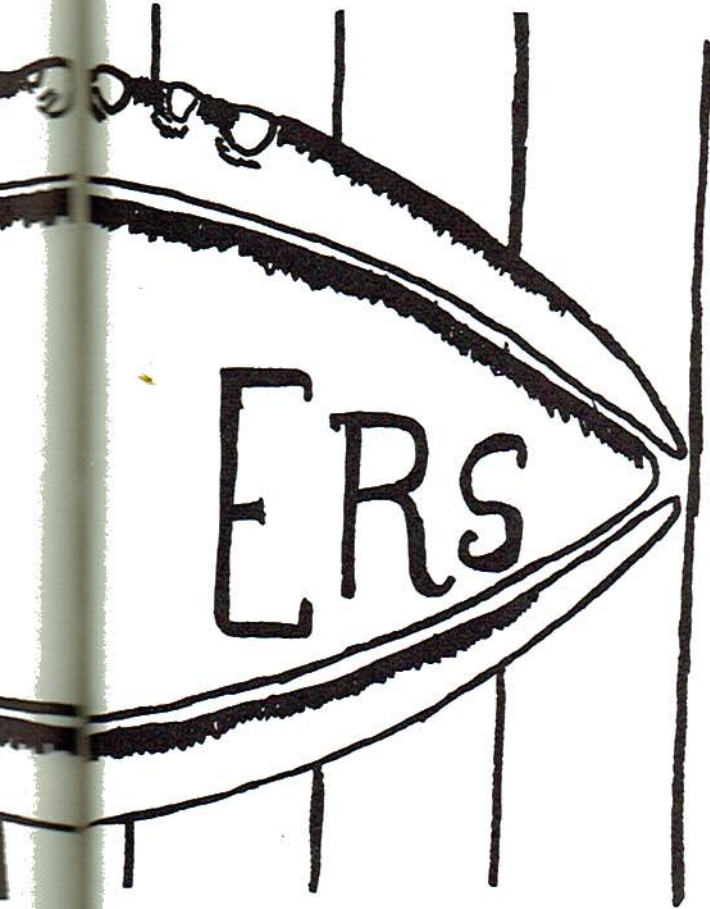
Paul Payne



Bobby Whitten



Thomas Jackson



Buddy Wilson



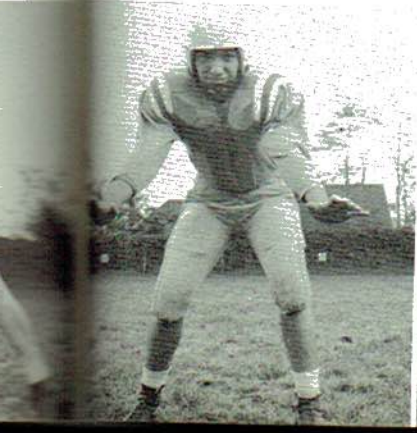
Arthur Reeves

Jimmy Loyd

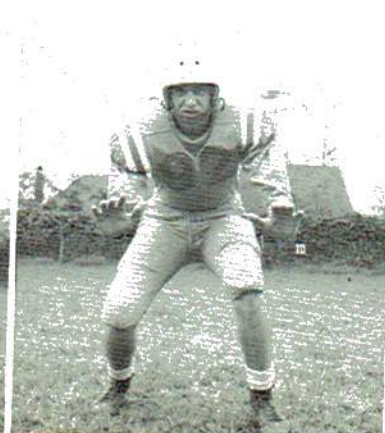


Wendell Raulston

Carl Janeway



Johnny Gunter





Jimmy McCrary



Bruce Coffman



Warren Whitcher



Eugene Burton



Jimmy Rook



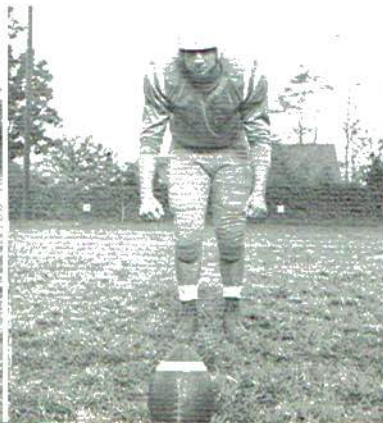
Coach Robert Cox, Co-Captain Bobby Whitten,
Captain Roy Thomas, Co-Captain Paul Payne



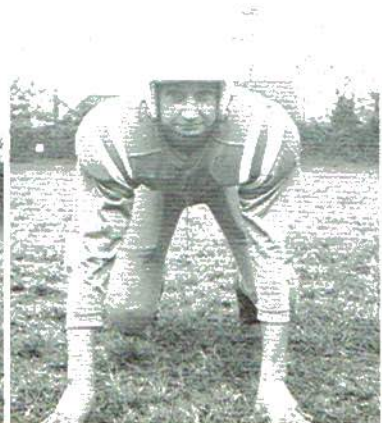
James Steele



Mickey Young



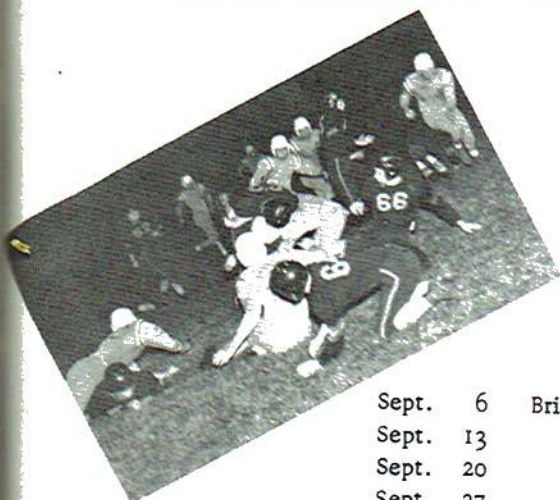
Clyde Raulston



Favil Wear



FIRST TEAM



Sept. 6	Bridgeport	0	Jasper	7
Sept. 13	"	0	Stevenson	0
Sept. 20	"	6	Notre Dame	13
Sept. 27	"	26	Pisgah	6
Oct. 11	"	34	St. Andrews	0
Oct. 18	"	0	Whitwell	14
Oct. 25	"	26	Valley Head	6
Nov. 7	"	0	South Pittsburg	6
Nov. 28	"	34	Stevenson	0

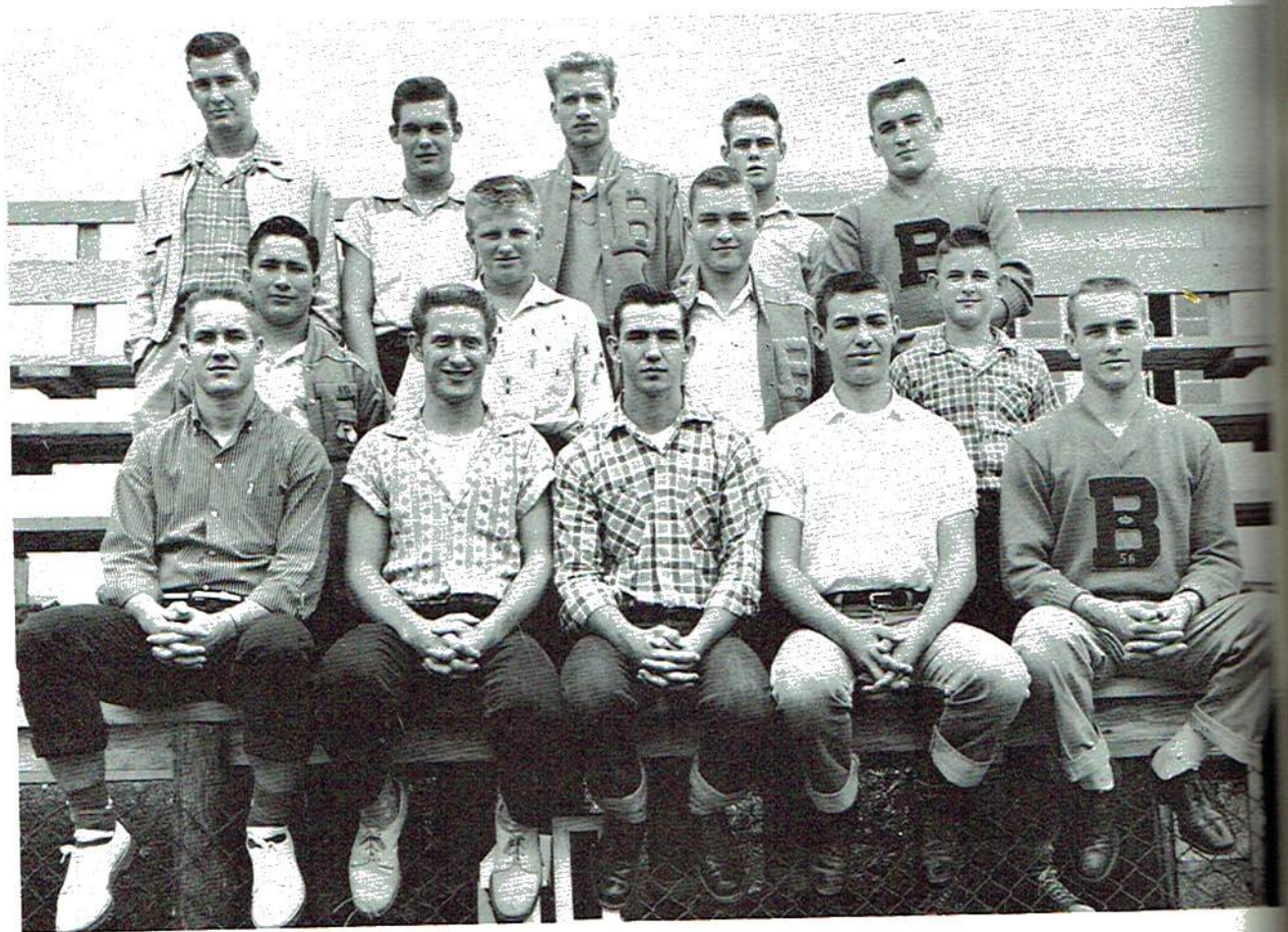
SECOND TEAM



THIRD TEAM

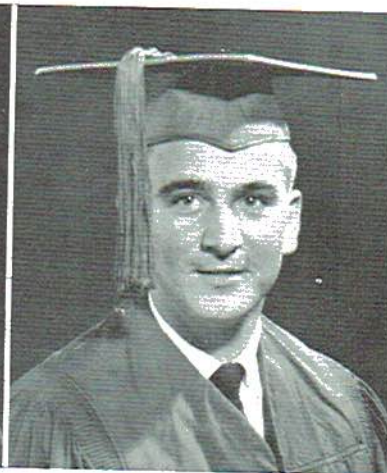


"B" CLUB



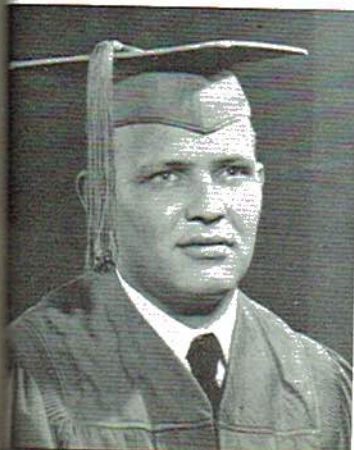
Bobby Whitten, Jimmy Loyd, Roy Thomas, Buddy Wilson, Thomas Jackson, James Steele, Charlie Smith, Butch Wear, Billy Loyd, Coach Robert Cox, Bruce Coffman, Bobby Wells, Kenneth Hart, Mickey Young.

ELIZABETH ALLISON
LOUISE BARNES
BRENDA BROWNING



FRANKIE
CAMPBELL
NANCY
COFFMAN
WILLIAM
CRAWFORD

DORIS ELLIOTT
CLARA GILL
MARY GOTHARD



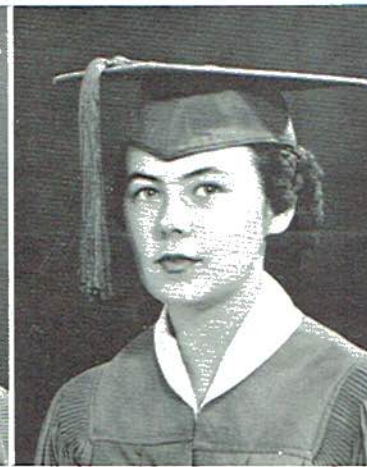
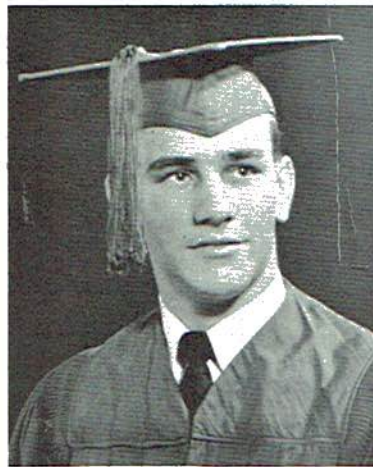
W. B.
GOTHARD
WANDA
GUESS
JOHNNY
GUNTER



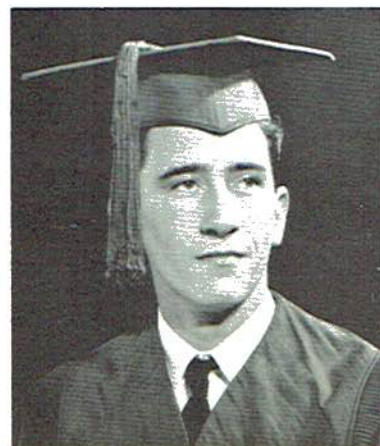
SUSIE HALL
 ELIZABETH HAMMOCK
 GLORIA HELTON



JOHN HENEGAR
 ANN HENSON
 SHERRY HISE



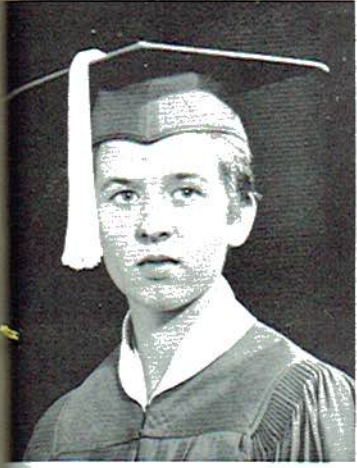
THOMAS JACKSON
 CARL JANEWAY
 JOANNA JOHNSON



EDMOND
 LAWHORNE
 RUBY LAWSON
 DON LOYD

HAMMONS
TON

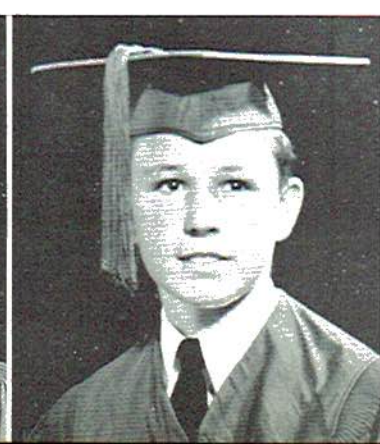
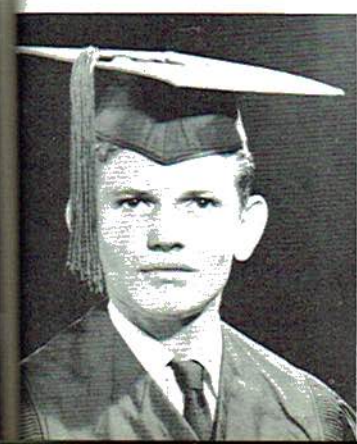
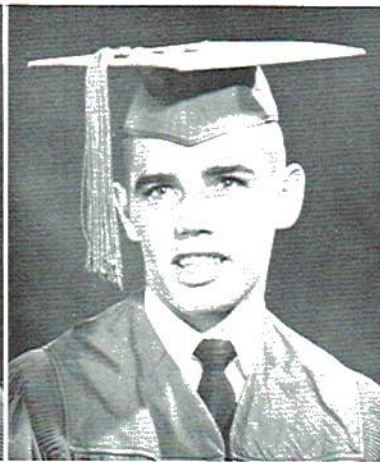
JIMMY LOYD
WANDA MASON
BITSY MATTHEWS



FRANCES
MAYNOR
JANE
McCRARY
CAROLYN
MOORE

JACKSON
NEWAY
JOHNSON

CHARLES PALMER
PAUL PAYNE
JIMMY PELHAM



DONALD
RAGAN
SUSIE
RANDOLPH
WENDELL
RAULSTON



ARTHUR REEVES
BARBARA ROGERS
DOROTHY ROREX



CAROLYN
SCISSOM
BRUCE SMITH
JUDY SMITH



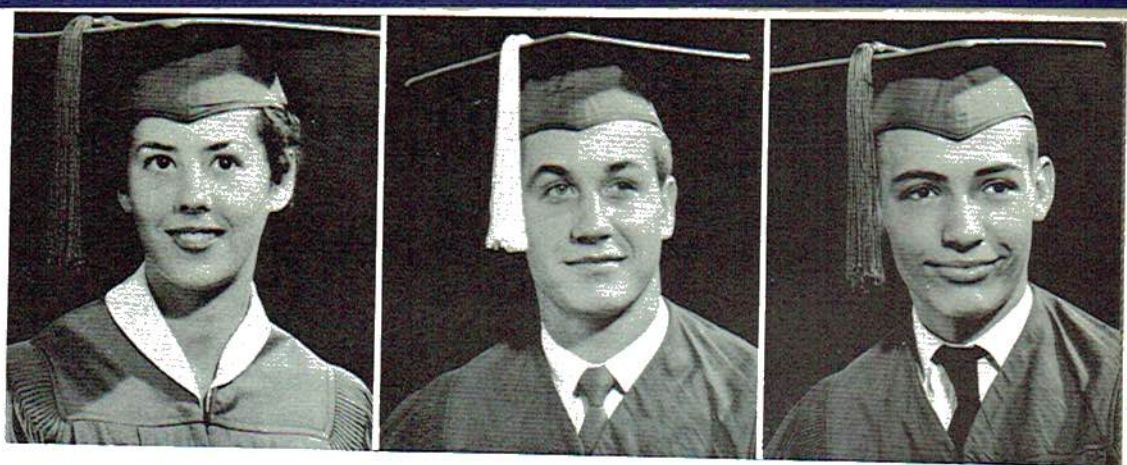
PATSY SMITH
SUSAN SMITH
ALMA LEE STEELE



JUDY
STUDDARD
ROY THOMAS
JANIE WALKER

EVES
OGERS
OREX

ROSE WALKER
BOBBY WHITTEN
BUDDY WILSON



OFFICERS: President Patsy Smith
 Vice-President Roy Thomas
 Secretary Frances Maynor
 Treasurer Don Loyd

SONG: Halls of Ivy

COLORS: Blue and White

FLOWER: White Rose

MOTTO: "Let us not stop until our Good Is Better
 and our Better Is Best."

TH
TH
STEELE





Society



We ain't doing nothing really!!!



Spiked???



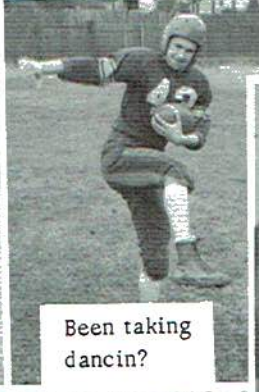
Will you ...



Can you feel the beat?



Jest bummin' around



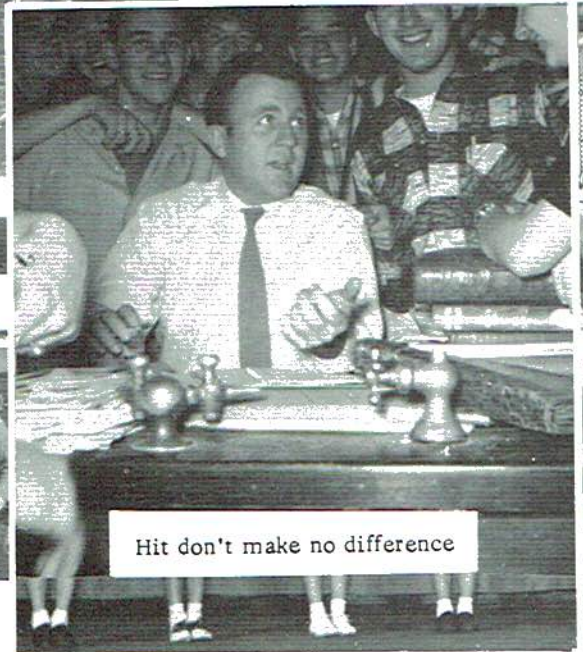
Been taking dancin'?



S-Sure I will ...



Ooh! Look! Legs!



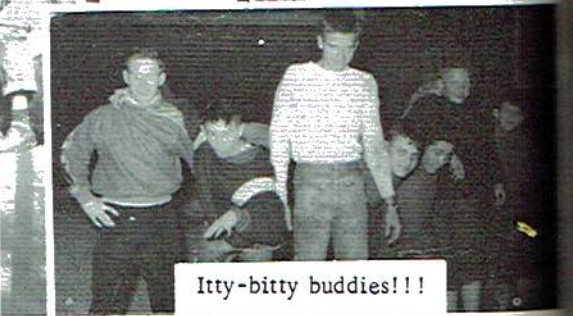
Hit don't make no difference



Man???



Who Done it?
Woops!!!



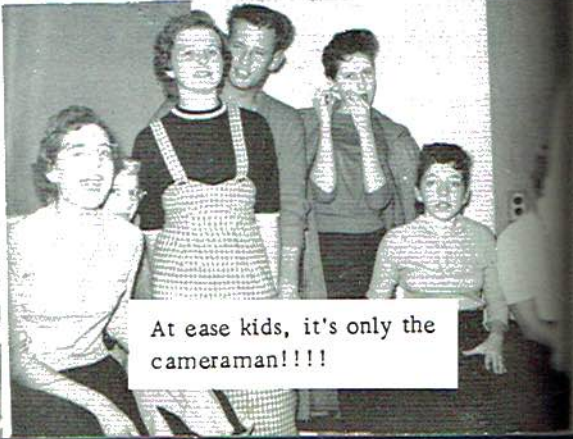
Itty-bitty buddies!!!



No men allowed!!!

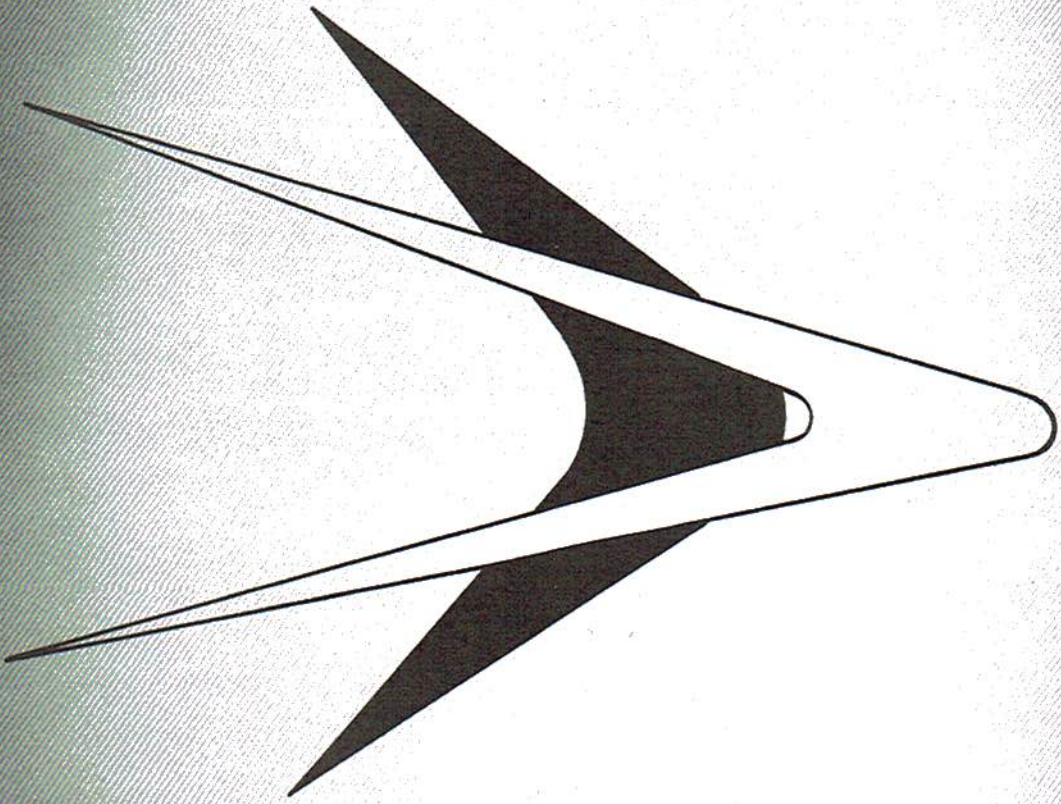


The High and Mighty!!!



At ease kids, it's only the cameraman!!!!

A
D
V
E
R
T
I
S
I
N
G
S





JACOBS MANUFACTURING COMPANY

THE JACOBS LINE

Gas Heaters and Stoves

Lawn Furniture

Athens, Alabama

Bridgeport, Alabama



**JOHN SEXTON
& CO.**



NATIONAL CHAIN WHOLESALE GROCERS

P. O. Box 4142

Federal Annex

Atlanta, Georgia



Happy Valley
FARMS *Pure-Bred Jersey Cattle*

• phone VE 1-3516

ROSSVILLE, GEORGIA

STUCKY'S PECAN SHOPPE
Between Jasper and South Pittsburg



DRINK
Coca-Cola

***The pause
that
refreshes
Coca-Cola
Bottling Co.***

SOUTH PITTSBURG, TENNESSEE



YOU CAN'T BEAT

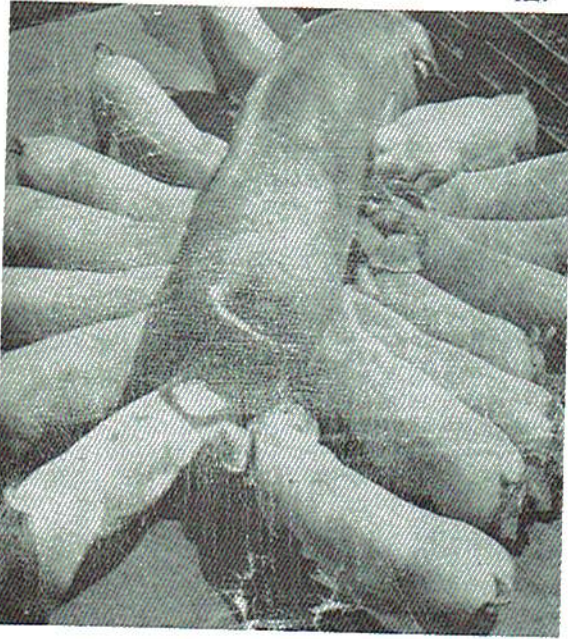
Valley Pride

FRANKS

LOYD'S FEED MILL

STEVENSON, ALABAMA

Phone: 4642



HERE IS ONE OF THESE LITTERS

COMPLIMENTS

OF

American National Bank

Bridgeport, Alabama

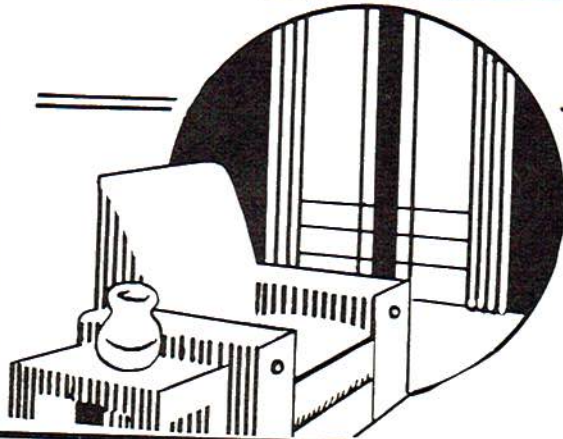


W. J. Word



Phone 38

Scottsboro, Alabama



Fine

FURNITURE L. H. Hughes Furniture

See Us First -- Lowest Price
Best Quality -- Best Service

Phone - HY 5-2561

SELBY & WOOSLEY BUSINESS MACHINES

PHONE 923-W

HIGHWAY 72

LARKINSVILLE, ALABAMA

Sales, Service & Rentals on following Office Machines:

Typewriters
Adding Machines
Calculators

Scales
Slicers
Grinders

Cash Registers

Vending Machines, such as Candy, Gum & Cigarette

COMPLIMENTS

OF

**The Jackson
County Sentinel**

AND

The Progressive Age



J. R. Loyd and Sons'

DEPARTMENT STORE

Dependable Service Since 1865

Phone - HY 5-2201



"WE SERVE TO SERVE AGAIN"

McClellans' Pharmacy

Bridgeport, Alabama



"PICK UP A DATE AND BRING HER TO KATE'S"

Kate's Restaurant

Located at Dixie Lee Junction

Open Around the Clock

John Jones - Manager



L.G. Balfour

Company

Class Rings - Crested Gifts

Class Pins - Citations

Medals - Cups

Trophies - Scrolls

Diplomas - Personal Cards

Attleboro, Massachusetts

Southland Photographic Studio

2206 DAYTON BLVD.

CHATTANOOGA 5, TENNESSEE



Genuine Ford Parts and Service

Authorized Dealers
New and Used Cars

There's a Ford in Your Future

"WHERE TO BUY IT"

Hammond Ford Motor Co.

South Pittsburg, Tennessee



THE POWER TO PASS THAT'S DIXIE GAS



ALABAMA OIL CO. OF HOLLYWOOD

Hollywood, Alabama

J. V. Barker & Co.

PURINA FEEDS

South Pittsburg, Tennessee

TE 7-6815

TE 7-7251



Mt. Vernon Colonial Restaurant

3509 Broad Street

Chattanooga

Tennessee



SOUTH PITTSBURG FLORIST

TE 7-6418

Corsages - Cut Flowers

Wedding Decorations

Catering Service

"Flowers of Distinction"

Bargain Store

Bridgeport, Alabama



Patrick Lumber Company

SCOTTSBORO, ALABAMA

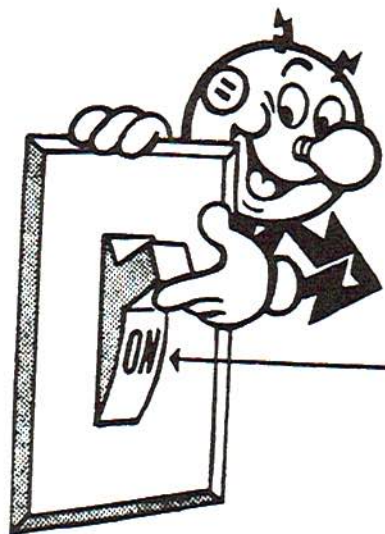
Phone 222



NORTH ALABAMA ELECTRIC COOPERATIVE

Stevenson, Alabama

Owned by Its Members



IVEY'S JEWELERS

Jewelry - Gifts
Hallmark Cards

South Pittsburg, Tenn.
TE 7-6511



COLONIAL BAKING CO.
■ 2220 EAST 4TH STREET
CHATTANOOGA 4, TENN.



Anderson Brothers and Goodwill Store

South Pittsburg,
Tennessee



BEAUTY ARTS

Whitehall 2-2491
Jasper, Tennessee



CHILDRESS IMPLEMENT & SUPPLY CO.

Wholesale Distributors
of Hardware and Implements
Tractors and Tractor Implements

Scottsboro
Alabama



**BROWN & BERGMAN
FURNITURE CO., Inc.**

FRIGIDAIRE APPLIANCES — MAYTAG WASHER
TELEVISION AND RADIOS

210 Broad Street

Phone 94

Scottsboro, Alabama

**Butler & Kennamer
Wholesale Company**

Scottsboro, Alabama

Phone 691



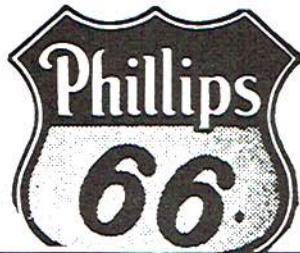
William Bros. Oil Company

Bridgeport, Alabama

HY 5-2413

A & S Service Station

Bridgeport, Alabama



WHITEHALL 2-2543



Economy Hardware Co.

"The Home of Good Hardware"

Phone TE 7-6042

Bea's Beauty Shoppe

Bridgeport, Alabama



SMITH STUDIO

Portraits - Weddings
Commercial Photographs

Phone TE 7-6461

South Pittsburg, Tenn.



Payne's Grocery

Groceries - Feeds

Coal and Wood

Gas - Oil

Bridgeport, Alabama

Phone HY 5-2404



Valley Tire & Supply

So. Pittsburg, Tennessee



Wales Jewelry

Scottsboro, Alabama



Mill End Store

Scottsboro
&
Ft. Payne

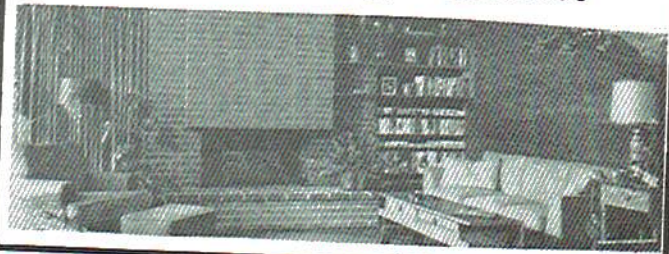
Phone 447-J



Compliments of

Rogers Furniture Company

South Pittsburg, Tennessee



Gist Studio & Camera Shop

Scottsboro, Alabama



PEGGY SHOP

Scottsboro, Alabama



Compliments
of
Chattanooga Fisheries, Inc.

1003 Corner E. 10th & Douglas St.
Chattanooga, Tennessee

Compliments of
Moss Motor Co.
South Pittsburg, Tennessee

The BEST in Used CARS

W. G. Phillips & Son

Jasper, Tennessee



ROBERTSON CLEANERS

3303 Broad St.

Opposite WDEF Studios
Chattanooga, Tennessee



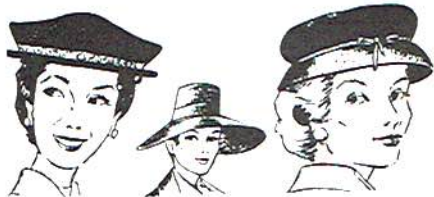
Compliments of
Riverside Bar-B-Q
On Highway 41 outside Jasper



Martin-Thompson Co. SPORTING GOODS
708 CHERRY STREET Chattanooga 2, Tennessee

Buelah Fudge Shoppe

South Pittsburg, Tennessee



C. A. WILSON
JACKSON COUNTY'S SHOPPING CENTER
Fackler, Alabama



Three Sisters

702 Market St.

Chattanooga 2, Tennessee

Tanner's Pharmacy

Service for the Sick

Only the Best

Day Phone
HY 5-2481

Night Phone
HY 5-2292

Hamilton Furniture & Appliance

South Pittsburg
Tennessee



Lois' Beauty Shop

Bridgeport, Alabama

HY 5-2260



For Good Food

Go To

KA MAR

Dixie Lee Junction

Teenagers!
Take Your Date to Ka-Mar!
For Good Sandwiches and Pies
KA-MAR RESTAURANT



JULIAN HAMBRICK'S
PHONE 357

GIFTS THAT LAST



Julian Hambrick's Gift Shop

A COMPLETE SELECTION OF FINE GIFTS
115 MARKET ST. SCOTTSBORO, ALA.

HALL'S JEWELRY

South Pittsburg, Tennessee

LUCY'S BEAUTY SHOPPE

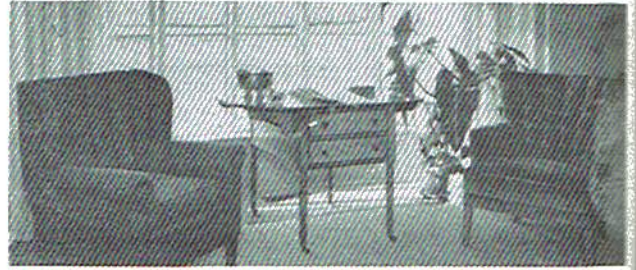
Whitwell, Tennessee

Compliments of
BEDDINGFIELD MOTOR COMPANY



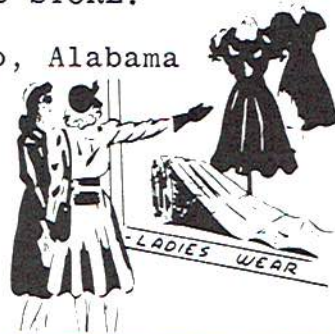
Scottsboro
Alabama
Phone 261

WALTON'S
THE HOME OF GOOD FURNITURE
South Pittsburg, Tennessee
TE 7-6866



Trade At
MANNINGS STORE!
Scottsboro, Alabama

Home Owned
Home Operated



DERRICK INSURANCE AND
REAL ESTATE COMPANY

Scottsboro, Alabama

Office Phone 79



R THOMAS APOTHECARY
W. T. THOMAS, R. Ph.
QUALITY PRESCRIPTIONIST SERVICE
PHONE 115 Reg. No 3287 SCOTTSBORO, ALA.



Paul's Food Market
South Pittsburg, Tennessee

TE 7-7551



B. & G. BUTANE-PROPANE
GAS COMPANY

Scottsboro, Alabama
Phone 290 J



WORD MOTOR COMPANY, INC.

Chevrolet and Oldsmobile

Sales and Service

Scottsboro

Stevenson

OLDSMOBILE



AL MILLER MUSIC STORE

512 McCallie Avenue

Chattanooga, Tennessee

"We Sell the Best"

Olds & Selmer
Instruments

MARIE'S BEAUTY SHOP

Bridgeport, Alabama

HY 5-2283



HILL'S SERVICE STATION

Bridgeport, Alabama

HY 5-2975

Compliments

of

Stevenson Drug Company

Stevenson, Alabama

SARTAIN'S DRUG COMPANY

South Pittsburg, Tennessee

Compliments

of

Rudder Funeral Home

Stevenson, Alabama

"Where the Teenagers Meet to Eat"

Murray's Cafe

Bridgeport, Alabama



Miller Bros Co

MARKET, SEVENTH AND BROAD
CHATTANOOGA, 1, TENNESSEE

Meet your friends at

MILLER BROS. CO.

Chattanooga's Greatest Store

Loveman's

Market at 8th

Chattanooga, Tennessee

Chattanooga's Quality Department Store

BOOSTERS

S. P. Raulston

Dr. J. W. Turner

Mr. Earl Good

Mr. Lester Ridley

George Grice

Junction Service Station

H. A. Jelloy

Dr. J. C. Pittman

David Ellis

Grady's Barber Shop

Bill Ray James

Mrs. Estell Bellomy

Keeble Grocery Co.

Skeltons T. V. Service

Woodalls Ready To Wear

Tot & Teen Shop

Gentry Motor Co.

Jesse Tant

MANY THANKS TO OUR LUNCHROOM STAFF

Mrs. Una R. Ellis, Manager

Mrs. Inez Hammons

Mrs. Nan Johnson

Mrs. Maggie Headrick

Mrs. Jessie Thomas