





The Reminder . . .

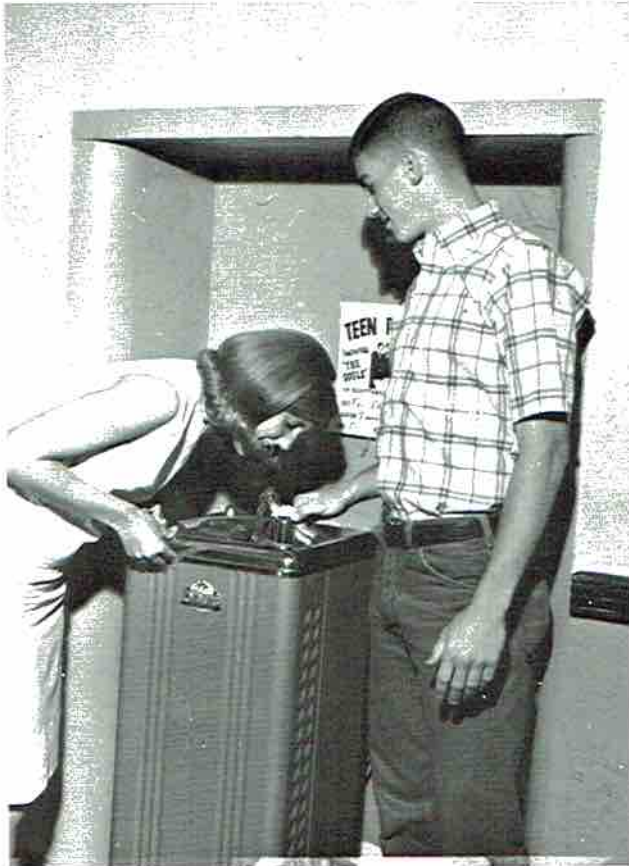
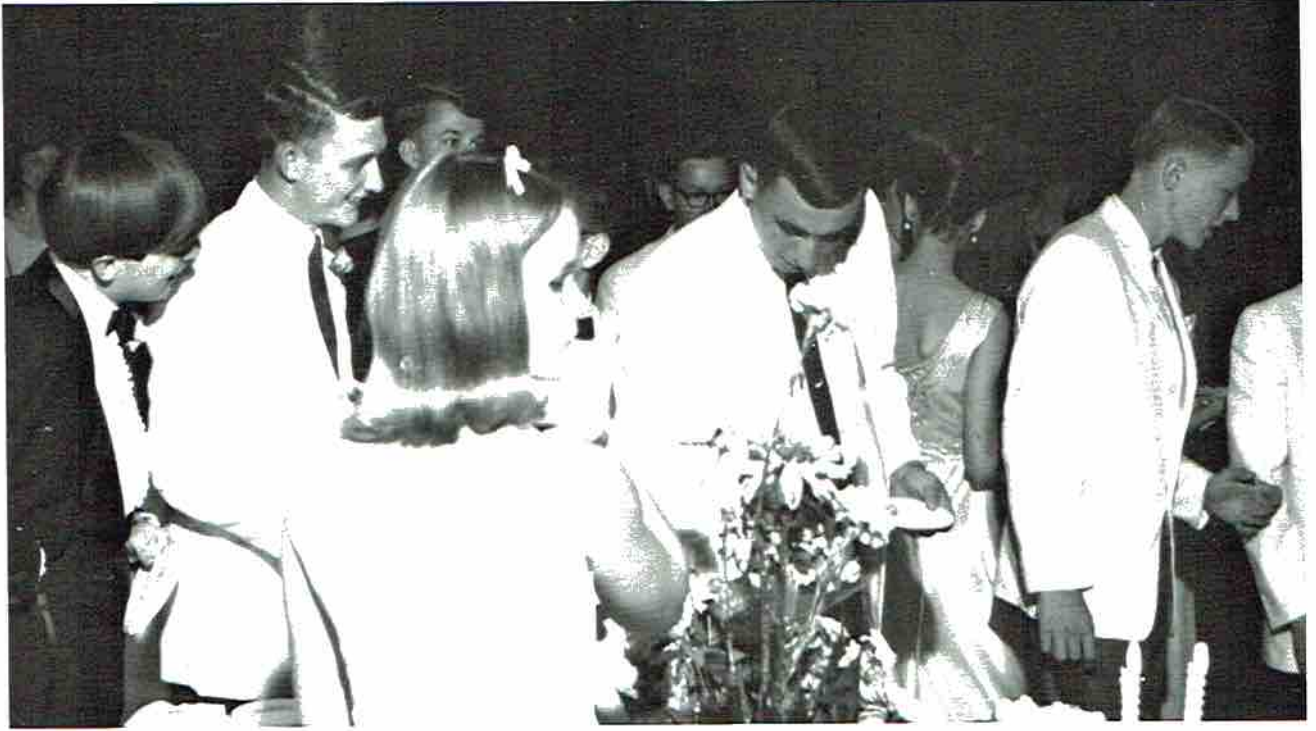
*Scottsboro High School
Scottsboro, Alabama*

S.H.S. The



Learning . . .

World of . . .



Courtesy . . .

Victory . . .



Sadness . . .







Dedication

MR. RAY COLLINS, we dedicate our yearbook to you, as you have exemplified the very type of life you have taught us.

You have taught us to give of ourselves completely in our school work and school activities. You have displayed this trait in yourself especially in your attempts to increase the scope of our curriculum, to promote our extra-curricular activities, and to watch constantly the progress of the new school building for next year's students.

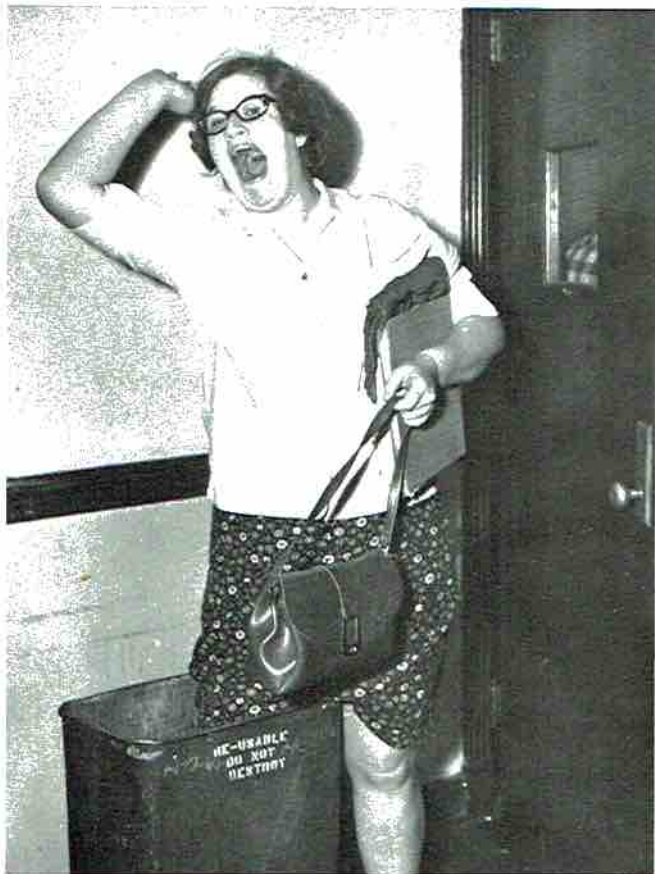
You have taught us discipline, yet you have shown discipline in your life in your relations with us. When we have acted like immature adolescents, you have not displayed anger at our childishness, but rather you have talked to us in such a way as to make us recognize our responsibility to act as adults.

We thank you for being not only a principal but also an understanding friend.

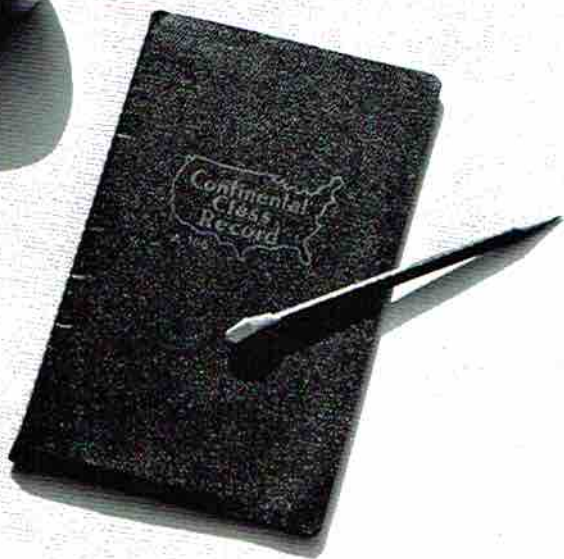




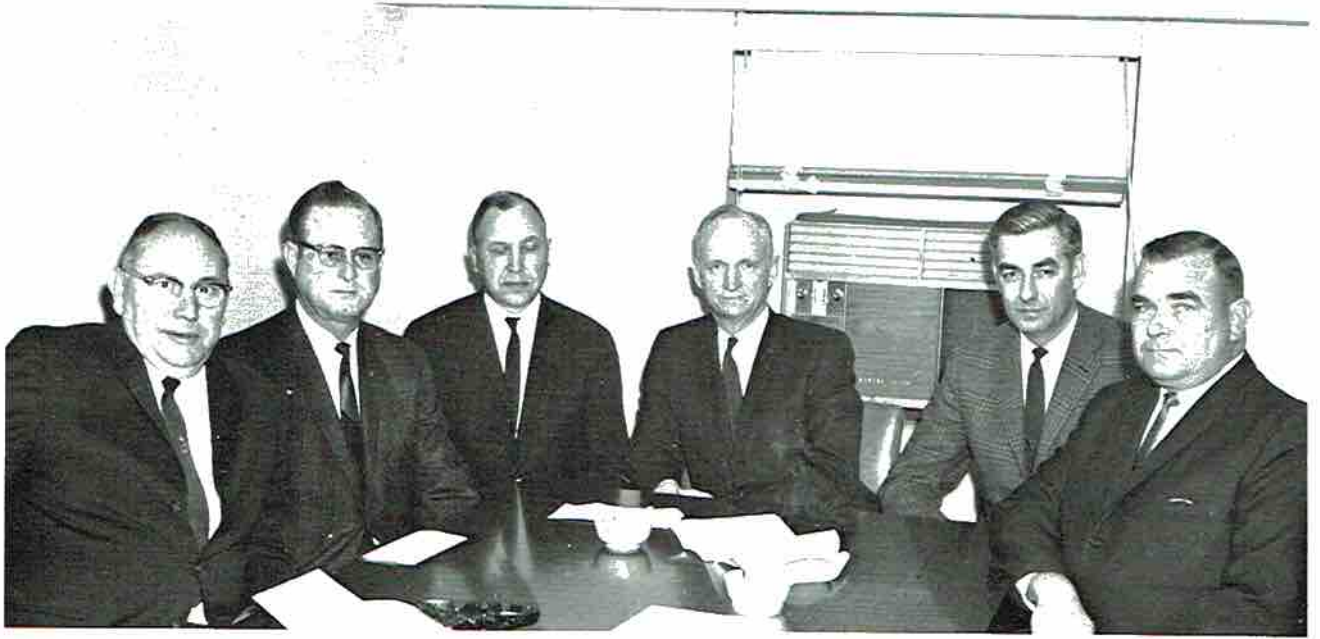




Laughter . . .



Scottsboro City Board of Education



MEMBERS: Dr. T. T. Nelson, Mr. Clyde Butler, Mr. Brooks Woodall, Mr. Charles Bradford, Mr. Jim McGinty, Mr. Alvin Butler.



MRS. WILLIAM HAAS
Secretary
Scottsboro City
Schools



DR. T. T. NELSON
Superintendent
Scottsboro City Schools



MRS. LEROY AIRHEART
Secretary
Scottsboro City
Schools

*A
d
m
i
n
i
s
t
r
a
t
i
o
n*



MR. RAY COLLINS
Principal
Scottsboro High School



OFFICE ASSISTANTS: Glen Hardin, Mickey Elliott, Wanda Miller, Mrs. T. T. Nelson, Secretary, Billy Nichols, Tommy Perkins, Donald Thomas, Peter Atkins.

SHS Faculty



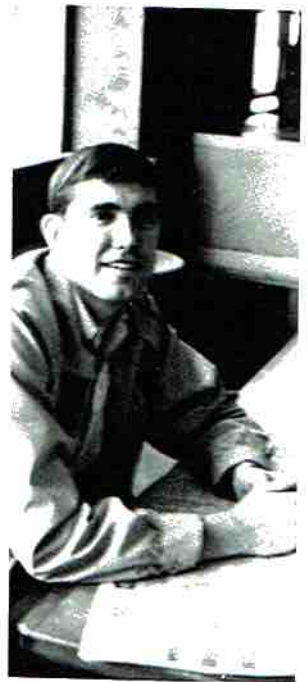
MRS. PEGGY ALLEN
Alabama College -
B. S.
Vanderbilt - M. S.
Biology
Medical Careers
Club Sponsor



MRS. ROY AMBRESTER
Mary Hardin Baylor -
B. S.
Univ. of Ala. - M. A.
Guidance Counselor



MRS. GEORGE ARMSTRONG
Athens College - B. A.
Peabody - M. A.
English
F. T. A. Sponsor



MR. KENNETH BARNES
Florence State - B. S.
Distributive Education
D. E. Club Sponsor



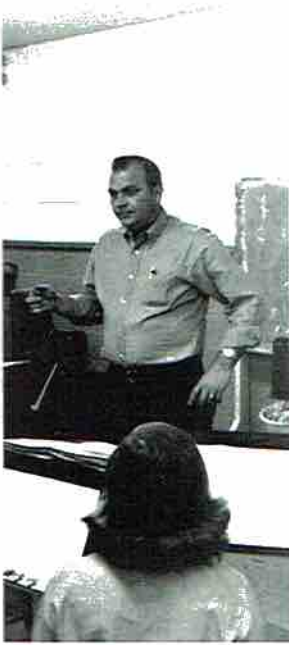
COACH HAROLD BOBO
Jacksonville State
University - B. S.
History



MRS. JACK BROOME
Florence State - B. S.
Peabody - M. A.
Business Education
Reminder Sponsor



COACH Q. K. CARTER
Jacksonville State
University - B. S.
Physical Education



MR. JACK COX
 Jacksonville State
 University - B. S.
 Univ. of Ala. - M. A.
 Band Director



MRS. NEWMAN DAVIS
 Univ. of Ala. - A. B.
 English
 Senior Class Sponsor



COACH BILL HAAS
 Jacksonville State
 University - B. S.
 History, Driver's
 Education
 "S" Club Sponsor



MRS. HOLLIS HAMBRICK
 Alabama College - B. A.
 Peabody - M. A.
 English
 National Honor Society
 Sponsor



MRS. SARA HARPER
 Jacksonville State
 University - B. S.
 English



COACH WILLIAM
 HAWKINS
 Jacksonville State
 University - B. S.
 Peabody - M. A.
 Biology, Phy. Ed.
 F. C. A. Sponsor



MRS. CHARLES HEATH, SR.
 H. Sophie Newcomb -
 B. of Design
 Mary Hardin Baylor - B. A.
 Peabody - M. of Lib. Sci.
 Librarian
 Library Club Sponsor



MRS. CECIL HODGES
Athens College - B. S.
Typing, Notehand



MR. WILEY HOPPER
Auburn University - B. S.
Auburn University - M. S.
Agriculture



MRS. DORAN INGRAM
University of Tennessee -
B. S.
Home Economics
F. H. A. Sponsor



MRS. JOSEPH A. LEE
Univ. of Ala. - B. S.
Peabody - M. A.
Chemistry, Physics
Science Club Sponsor



MRS. W. W. MATTHEWS
Alabama College - B. S.
Occupational Home
Economics



MISS CORA MICHAELS
Bethel College - B. A.
Univ. of Ala. - M. A.
Mathematics



MR. J. R. PORCH
Jacksonville State Univ. -
B. S.
Auburn - M. S.
Vocational Industrial
Education
V. I. E. Club Sponsor



MR. ROBERT PORCH
Jacksonville State
University - B. S.
Democracy, Economics



MRS. CHARLES ROBERTSON
Jacksonville State
University - B. S.
Democracy, American
History



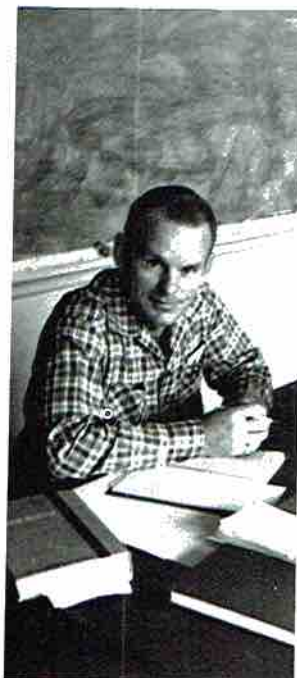
MRS. FRED SANDERS
Univ. of Ala. - B. A.
Peabody - M. A.
Mathematics
Student Council Sponsor



MRS. WILLIAM SLOAN
Jacksonville State
University - B. S.
Physical Education
Pep Club and
Cheerleader Sponsor



MRS. THOMAS STEVENSON
Univ. of Ala. - B. A.
Speech, English
Debate Coach



MR. FRED THOMAS
Florence State - B. S.
Math, Business Law



MRS. CHARLES
WALLINGSFORD
Samford University - B. S.
Bookkeeping, Typing
Wildcat Sponsor

We Appreciate Our . . .



CUSTODIAN
John Snodgrass



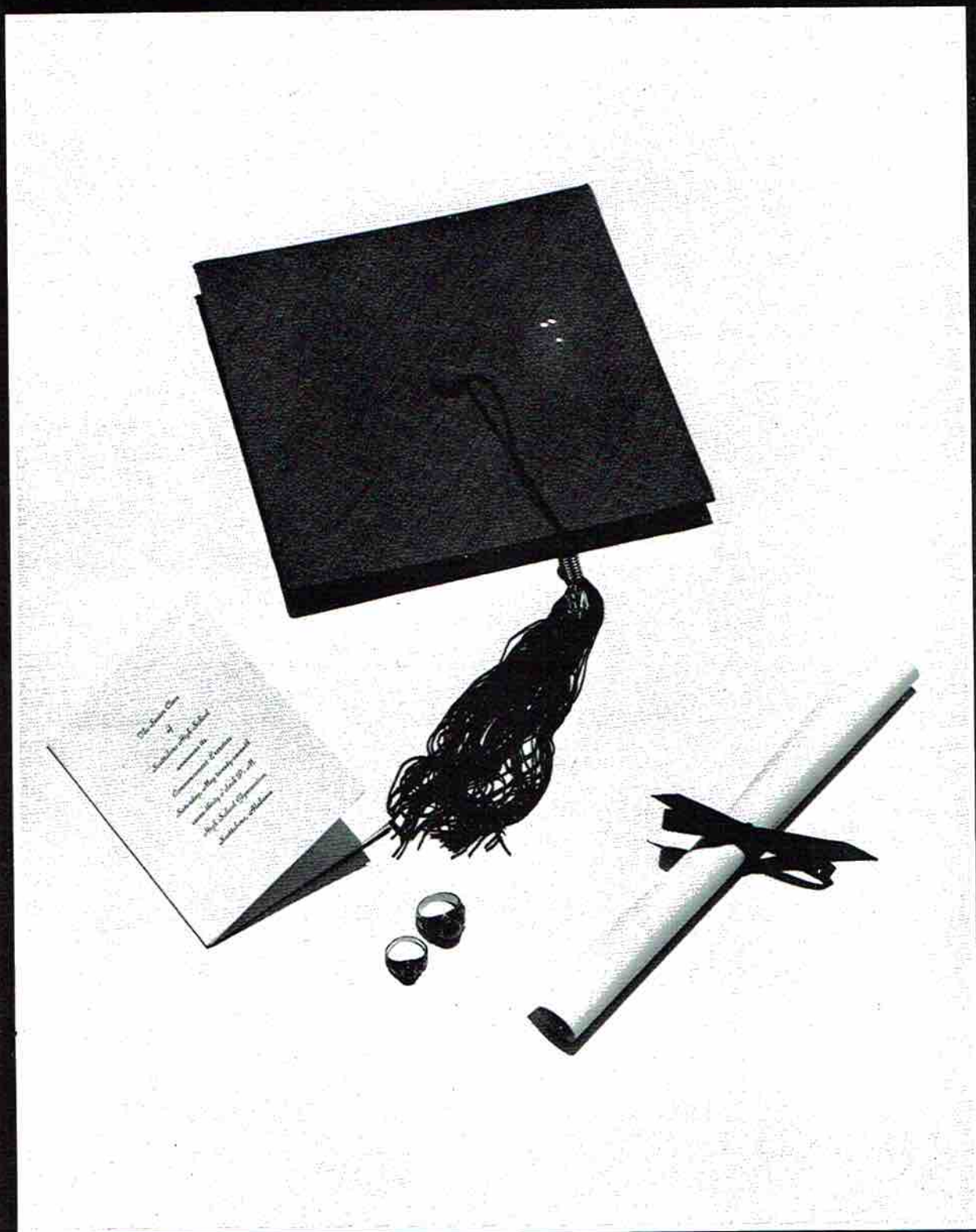
DIETICIANS
Bell Hart and Billie Hastings

To our teachers we wish to express our appreciation for their assistance, guidance, patience, and thought. Each of us sincerely extends his fondest thanks and best wishes for the future.

THE SENIORS



A World of Leadership



Classes

Senior Class Officers

President:
HANK FRAIZER

Vice-President:
NANCY LYNCH

Secretary:
LINDA BASS

Treasurer:
GEORGE PARKS

Typist:
PATRICIA SIMMONS

Asst. Typists:
SUSAN WILKINSON
LINDA PAGE



BILLY

Pep Cl
mens C

SARAH

Pep Cl
Club 1
3; Girl

EDDIE

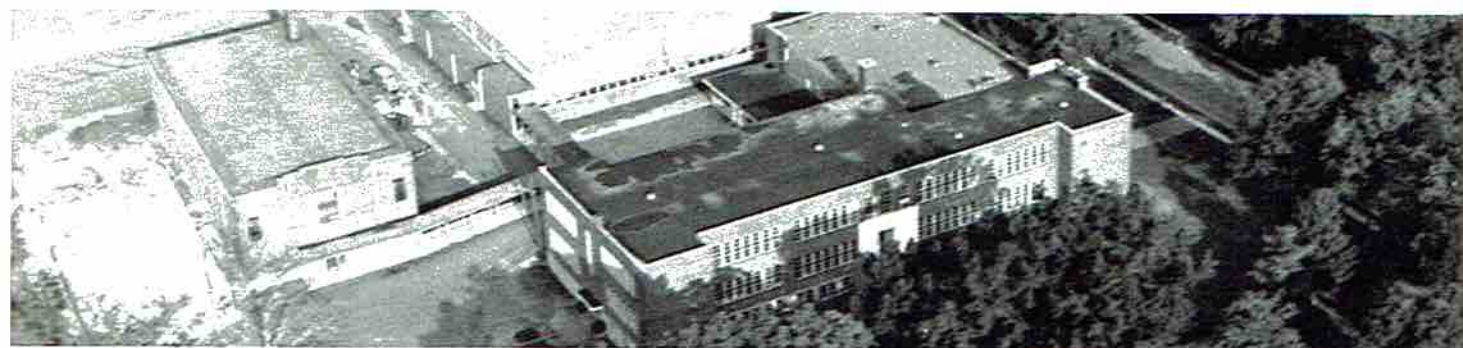
Pep Cl
Studen
"S" Cl
AASC
Award
Depend
Staff 3;
Event 2

DORIS

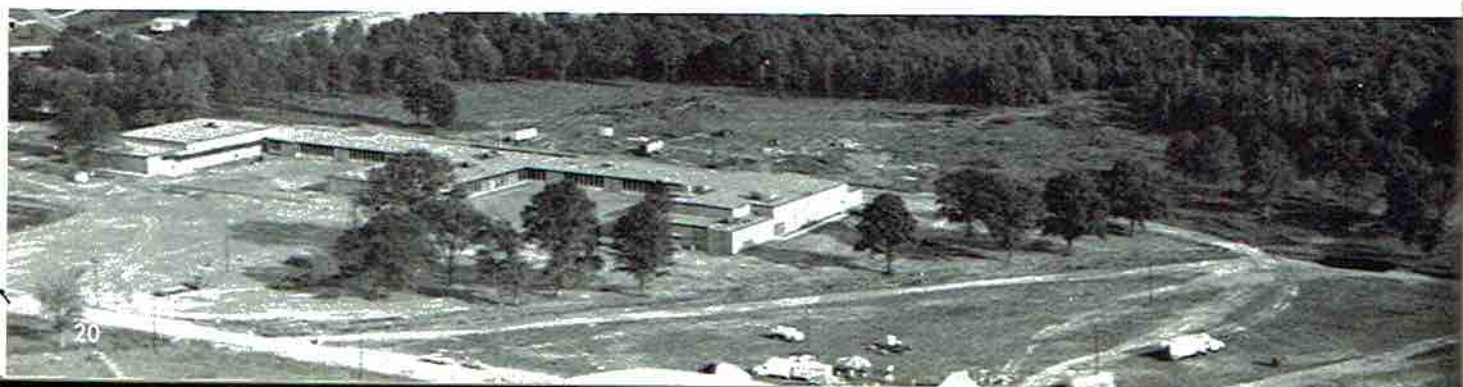
FHA 1;
Assistan
Reporte

BARRY
Pep Clu
Sophom
Who Fri

LINDA
Student
1-3, Vi
3; FHA
urer; Ser
State Co
tive 2; W



We, the Class of 1967, the last of the old, wish luck to the Class of 1968, the first of the new.



BILLY FRED ADAMS

Pep Club 1-3; FFA 1; Basketball 2-3; Sports-
mens Club 1

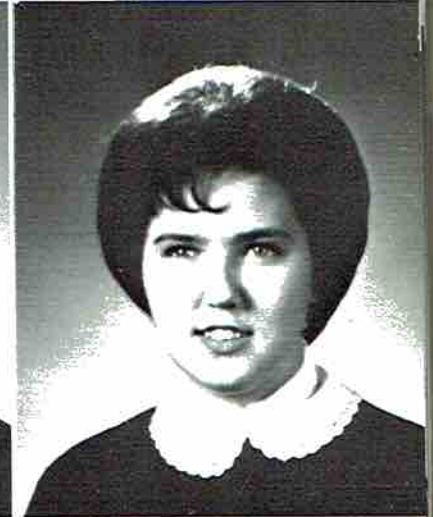


SARAH ALICE AIRHEART

Pep Club 1-3; Medical Careers 1-3; Library
Club 1-2; Debate Team 2-3; Science Club
3; Girls' Civitan Oratorical Winner 2

EDDIE AKIN

Pep Club 1-3; National Honor Society 2-3;
Student Council 3; Secretary-Treasurer 3;
"S" Club 1-3; FCA 2-3; NHS Convention 2;
AASC Convention 2; American History
Award 2; Football 1-3; Who's Who Most
Dependable 3; Annual Staff 3; "Wildcat"
Staff 3; Debate Team 3; Times Current
Event 2

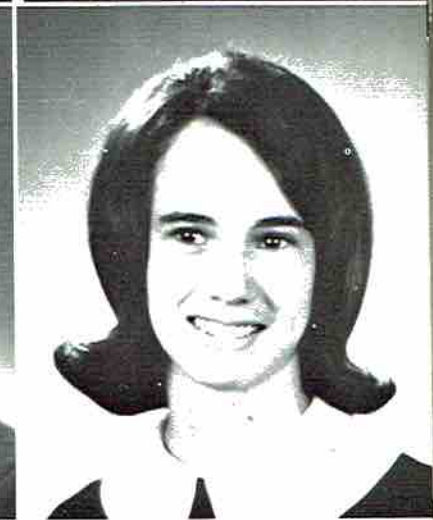


DORIS LENELL AMOS

FHA 1; Pep Club 1-3; Library Club 1-2;
Assistant 2; Science Club 2-3; DE Club 3;
Reporter 3

BARRY W. ATKINS

Pep Club 1-2; Football 1-2; Track 2-3;
Sophomore Class Secretary-Treasurer; Who's
Who Friendliest 3



LINDA DIANNE BASS

Student Council 2-3; National Honor Society
1-3, Vice-President 3; FTA 2-3; Historian
3; FHA 1; Pep Club 1-3; Junior Class Treas-
urer; Senior Class Secretary; Delegate NHS
State Convention 2; Girl's State Representa-
tive 2; Who's Who Most Studious 3

Would you believe - a white dove in OUR kitchens?





DONALD BEARD

FFA 1-3 Pep Club 3; Basketball 2



MARSHA BELLOMY

Pep Club 1-3; Medical Careers 3; Library Club 3



KERMIT BOLTON

Pep Club 1-3; "S" Club 2-3 Football 1-3 "S" Club Secretary; Most Valuable Line-man Football 3; Who's Who Most Original



JIMMY BRADFORD

FFA 1-3 Pep Club 3 Concession Stand Helper 1-3



LINDA BRADFORD

FHA 1; Pep Club DE Club 2



THOMAS BRADFORD

Library Club 1; Pep Club 1-3 DE Club 3 Track 1



DIANNE BRANDON

Medical Careers Club 1-3 Pep Club 1-3 Library Club Student Council Alternate Representative 3; National Honor Society 3; Vice-President Sophomore Class; Treasurer Library Club 2; Cheerleader Alternate 2; Cheerleader 3; Who's Who Most Considerate.



PEGGY RUTH BROOKS

FHA 1; Pep Club 1-3; Library Club 1-3



Mr

LARRY

Transf
1-3; T
Club 1
ular 3;

DOC C

"S" CI
1-3; F

ROY L

FFA 1

PATRI

Pep CI
FHA 1
Player
Athlet

LINDA

Pep CI
"S" CI
3; Chr
St. 2-3
Mgr. 3

JERRY

FB 1-3
FFA 2
Play. A
1; All-
Around



Mrs. Davis is the winner of our first prize.



What do you mean, "I was driving recklessly?"

LARRY BROWN

Transfer Student; Basketball 1-3; Pep Club 1-3; Track 1-3; Student Council 1; Key Club 1-2; FTA 1-2; Who's Who Most Popular 3; All-Tournament Team 3

DOC CAMPBELL

"S" Club 2-3; Student Council 1; Pep Club 1-3; Football 1-3



ROY LEE CASH

FFA 1-2

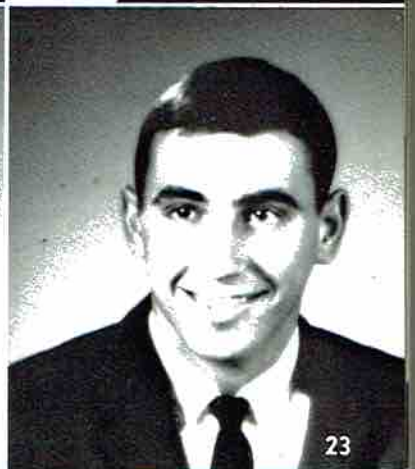
PATRICIA ELIZABETH CHANDLER

Pep Club 1-3; Medical Career Club 1-3; FHA 1-3; Parliamentarian 3; Most Valuable Player Girls' Basketball 2; Who's Who Most Athletic 3



LINDA CHAPMAN

Pep Cl. 1-3; Lib. Cl. 1; FTA 2-3; FHA 3; "S" Cl. 2-3; Hmcg. Att. 1; Hmcg. Queen 3; Chldr. 1-3; Head Chldr. 3; "Wildcat" St. 2-3; Editor 3; Reminder St. 2-3; Business Mgr. 3; Stu. Coun. 1; Who's Who Prettiest 3



JERRY CHRISMAN

FB 1-3; BB 1-3; Track 1-3; Pep Cl. 1-3; FFA 2; Treas. of Soph. Class 1; FB Best Ret. Play. Aw. 2; Class Fav. 2-3; Sportsman Cl. 1; All-Tourn. Tm. 3; Who's Who Best All Around 3



BOBBY CORNELISON

F, F, A, 1-3; D. O. 3;

MELVIN K. CORNELISON

F, F, A. 1-3;

RONALD

Secretary
1, 2, 3, 4
3 Track

LINDA S.

FHA 1, F



NANCY CORNELISON

F. H. A. 1; Library Club 1-3; Pep Club 2-3;
Library Assistant 1-2;

BILLY COWLEY

Sportsman Club 1; Pep Club 1-3; Medical
Career 3;

PATTY S

Home Ec

WAYNE

Pep Club
2-3.



CAROL CULVER

Pep Club 1-3; Library Club 1-3; Library
Reporter 2; Medical Careers 2-3; Future
Homemaker of America 1-3; Miss FHA Al-
ternate 1; Reminder Staff 3; Senior Editor
3; "Wildcat" Circulation Manager 3

LARRY DAWSON

F. F. A. 1-3;

MICKY

Basketbal

BRENDA

Pep Club
Library A



LINDA MAE DAWSON

F. H. A. 1; Pep Club 1-3; Library Club 1-3;

BILLY JOE DOBBINS

Basketball 1-2; D. E. Club 2; Pep Club 3;

RONALD DOLBERRY

Secretary of Sophomore Class 1 Pep Club
1, 2, 3, FFA, 2 Basketball 1, 2, 3, Football
3 Track 1, 2, 3



LINDA S. DUDLEY

FHA 1, Pep Club 1, 2, 3 NHS 3

PATTY SUE EAKIN

Home Economics 1

WAYNE EDMONDS

Pep Club 1-3, FFA 1-2, FTA 2-3, NHS
2-3.



MICKEY ELLIOTT

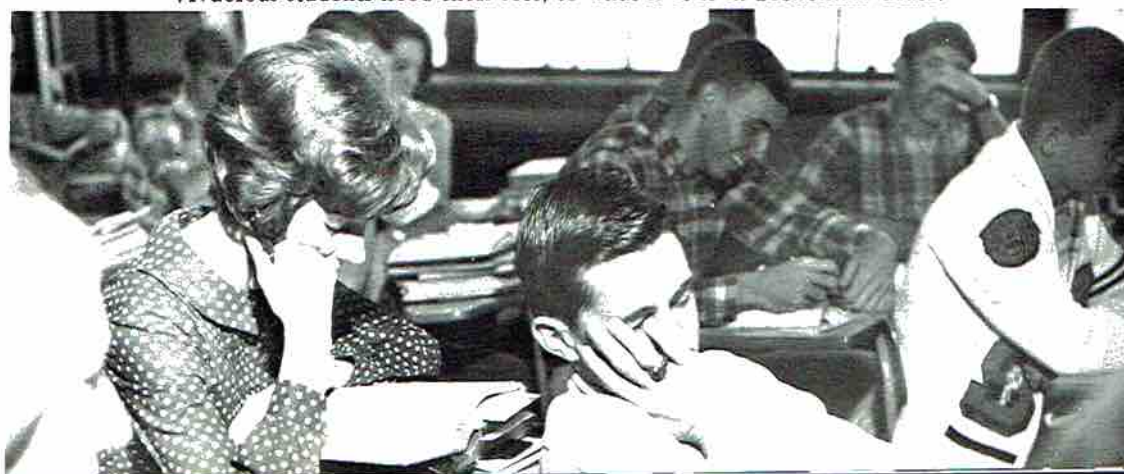
Basketball 1-3, Pep Club 1-3

BRENDA LOIS EVETT

Pep Club 1-3, FHA 1, 3, Library Club 2-3,
Library Assistant 2-3.



Vivacious students need their rest; so what if it is in Economics Class!



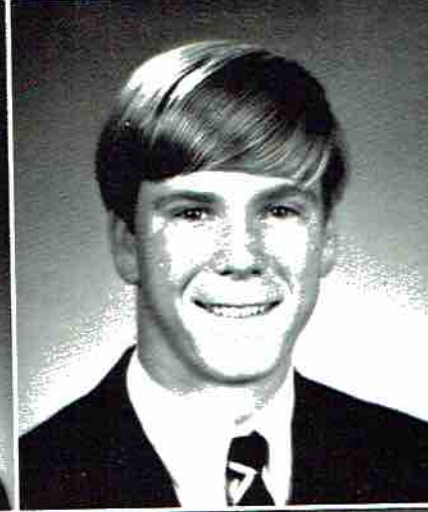


CLAUDE EVETT, JR.

FFA 1-3; DO 3

PAULETTE FERGURSON

Transfer Student; Library Club 1-3; Pep Club 1-3; FHA 3

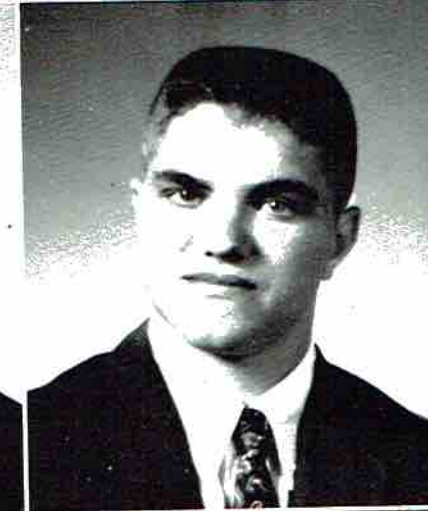
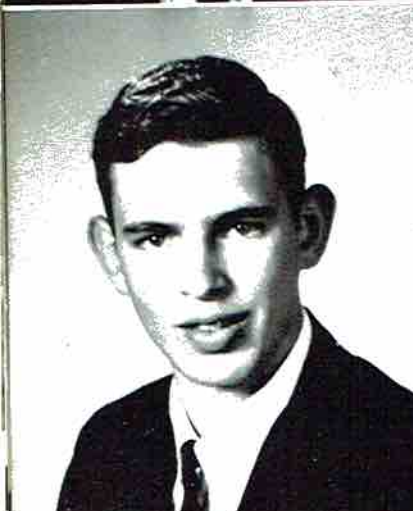


WILLIAM HENRY FRAZIER III

Football 1-3; Track 1-3; Medical Careers Club 1; Science Club 2-3; Debate Team 1-3; Pep Club 1; National Honor Society 3; President Senior Class; "S" Club 2-3; Most Improved Football Player 3; Who's Who Neatest 3;

MICHAEL C. FREDRICK

Transfer Student; Medical Careers Club 3



DAVID WAYNE GAMBLE

FFA 1-3

FERREL GASS

Football 1-3; Pep Club 1-3; FFA 2-3; "S" Club 1-3; Sportsman Club 1; FCA 2-3



EDDIE GOLESBY

Science Club 1-3; FFA 1-2

VIRGINIA ROSS GREEN

FHA 1-2; Library Club 1-3 Vice-president 2; President 3; Pep Club 1-3



BOBE
FFA
REGI
FHA

BREN
Libra
(Woc
Cour
FRAN
Scie
Care

MIL
D. O
BOB
Pep



MY DOLL is BIGGER than YOUR DOLL!

BOBBY R. GRIDER

FFA 1-3; Pep Club 1-3;

REGINA GRIDER

FHA 1-3; Library Club 1, 3; Pep Club 1-3;



BRENDA SKELTON GRIFFIN

Library Club 1, 3; Pep Club 1, 3; FTA 2,
(Woodville High School) Secretary Student
Council 2, Science Club 3

FRANK HAAS

Science Club 2, 3; Pep Club 1, 2; Medical
Careers Club 3

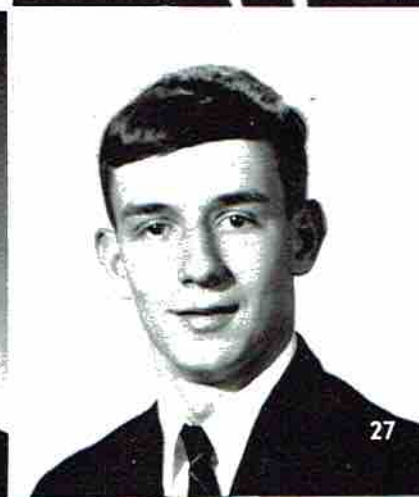


MILES HAMMON JR.

D.O. 2, 3; Pep Club 3

BOBBY HASTINGS

Pep Club 1-3; D.E. 3



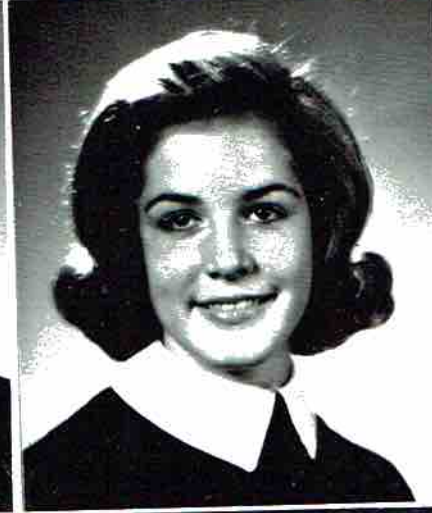


HELEN HASTINGS

FHA 1; Pep Club 1; D. O. 1,2

ROBERT HESTER

Class President 1; Class Favorite 1; Pep Club 1, 2, 3; "S" Club 2, 3; Football 1, 2, 3; Basketball 1, 2, 3; FFA 1, 2, 3 - President 3; Student Council 3; Best Returning Back 2; Track 1, 2, 3; Most Valuable Back; FHA Sweetheart 3; Who's Who Handsomest 3



KENNETH HIGGINBOTHAM

Football 1, 2, 3; Pep Club 1; FFA 1; "S" Club 2, 3

HADEN VIRGINIA HODGES

Pep Club 1, 2, 3; Medical Careers Club 1; National Honor Society 2, 3; Band 1, 2, 3; Majorette 2, 3; FTA 2, 3; Miss SHS 1st Runner-Up 2, 3rd Runner-Up 3; Library Club 1, 2, 3; Honorary Latin Club; Spanish Club 2; Science Club 2, 3; Secretary 3



DORIS MABEL HOGE

Pep Club 1, 2, 3; FHA 1;

JESSE A. HOGE

FFA 1, 2; D. O. 2, 3; Pep Club 3



EMMETT L. HOLDER

Pep Club 1, 2, 3 - Treasurer 3; Library Club 1, 2, 3; Medical Careers 1, 2, 3; Sportsman Club 1; Student Council 1

ROBERT L. HOOKS

Library Club 1; Pep Club 1, 2, 3

PAULETT

Pep Club
Medical C
Club 2; F

DANNY J

FFA 1-2:

SHERRY L

Transfer
FHA 3; P
reers Clu
Staff 3; S
Second P
Your Har

CLAUDE

FFA 1-3:

OLIVER

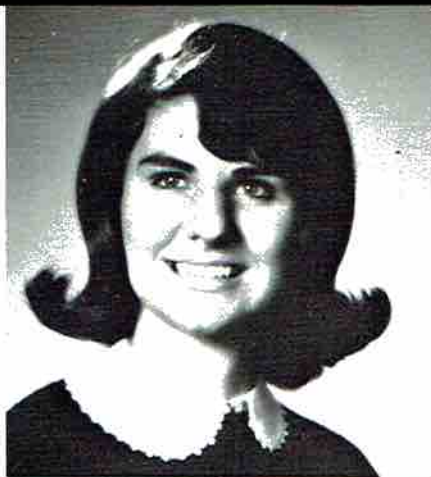
Pep Clu
D. O. C

MARGA

Library
Teache
Treasu
guard o
Miss C
ety 3;
2; Who

PAULETTE JAMES

Pep Club 1-3; Vice President Pep Club 3;
Medical Careers Club 2; Secretary Medical
Club 2; FTA 3; Library Club 1-3



DANNY JOHNSTON

FFA 1-2; D. E. 3

SHERRY LYNN JONES

Transfer Student; Band 1; Pep Club 1-3;
FHA 3; Photographer FHA 3; Medical Ca-
reers Club 3; Library Club 3; Reminder
Staff 3; Senior Editor 3; Wildcat Staff 3;
Second Page Editor; Chairman of Reach Out
Your Hand Project 3;

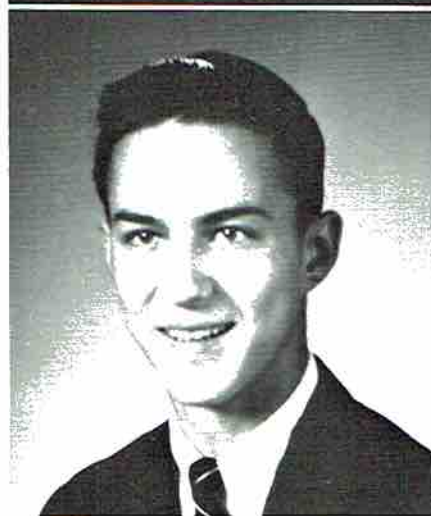


CLAUDE JUDGE

FFA 1-3; D. E. 3; Track 1-3;

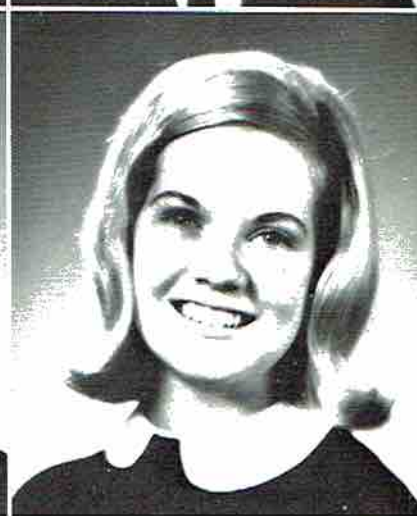
OLIVER CHARLES KEEL

Pep Club 1-3; FFA 1-2; D. O. Club 2-3;
D. O. Club Treasurer 3

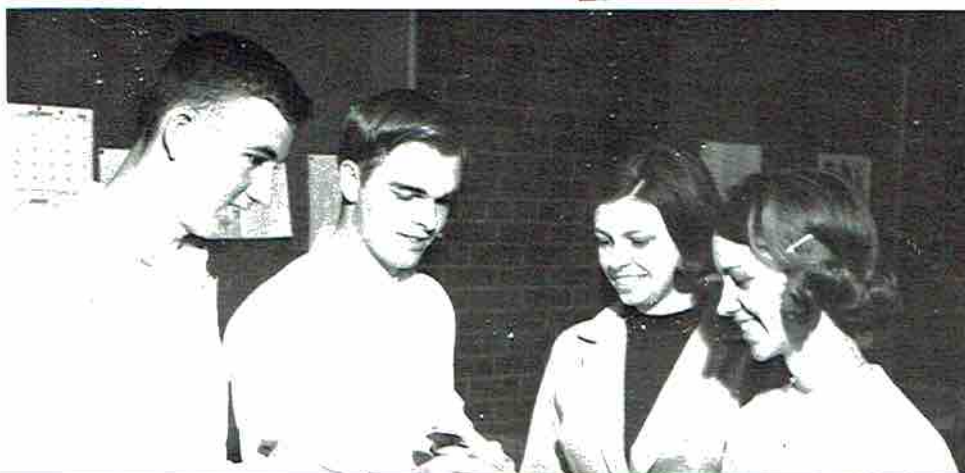


MARGARET CAROL KELLER

Library Club 1-2; Pep Club 1-3; Future
Teachers of America 2-3; Science Club 3;
Treasurer Science Club 3; Band 2-3; Color-
guard of Band 2-3; Miss Scottsboro High 3;
Miss Congeniality 3; National Honor Soci-
ety 3; Music Camp Award 1; Spanish Club
2; Who's Who Most Talented



Mine is the prettiest because it has peanut butter ink!





LARRY EDWARD KIRKLAND

Pep Club 1, 2, 3; Sportsman Club 1; Library Club 2, 3; Medical Careers Club 3; Basketball Announcer

EWELL W. LANSFORD, JR.

Pep Club 1, 2, 3; Science Club 2, 3; FFA 1; National Honor Society 3



DOYLE LEDBETTER

FFA 1; D. E. 3

JERRY LEDBETTER

Pep Club 1, 2, 3



BRENDA WEEKS LIGHT

Library Club 1, 2; Pep Club 1; FHA 1, 2, 3

PAUL THOMAS LUSK

D. O. 3; FFA 1, 2, 3



MILDRED LUSK

FHA 1, 2; Library Club 2, Assistant 2; Pep Club 1; D. O. 3

NANCY CAROL LYNCH

Medical Careers Club 1; Pep Club 1, 2, 3 - Secretary 3; Library Club 2; Student Council 1, 3; Class Vice-President 3; Class Favorite 1, 2, 3; Homecoming Attendant 3; SHS Debate Team 2, 3; FTA 2, 3; Who's Who Friendliest



STEVE M

Transfer 1-3

EDNA R

Pep Club
Library
Convent

SYLVIA

Honorary
Medical Careers
Library Club
2-3; Sp
Band 3;
ternate

JIMMY

Pep Club

JOAN M

Pep Club
FHA 1;

WILLIA

Medical
Library Club
3; Pep
Band 2



And our Champ is Mrs. Lee



Who said seniors are humane?

STEVE MANNING

Transfer student; Latin Club 1; Pep Club 1-3

EDNA RUTH MARSH

Pep Club 1-3; FHA 1-3; President FHA 3; Library Club 1-3; Attended National FHA Convention 3; Co-Ed Correspondent 3;



SYLVIA L. MARTIN

Honorary Latin Club; Pep Club 1-3; Medical Careers Club 1; Science Club 2-3; Library Club 1-3; Future Teachers Of America 2-3; Spanish Club 2; Band 1-3; Secretary of Band 3; Student Council Representative Alternate

JIMMY L. MATTHEWS

Pep Club 2-3; Medical Careers Club 3



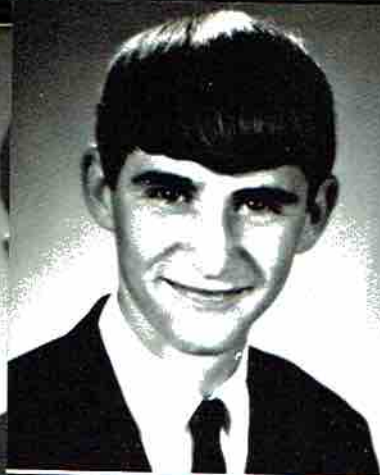
JOAN McALLISTER

Pep Club 1-3; Medical Careers Club 2-3; FHA 1; Library Club 1, 3; Library Assistant 1

WILLIAM R. McCAMY

Medical Careers Club 1-3; President Medical Club 3; Science Club 3; Library Club 1-3; Pep Club 1-3; Band 1-3; Section Leader Band 2-3





DANNY McCRARY

Pep Club 1-3, Band 1-3, Student Council 3, Science 1, Sportsman Club 1



ANITA GRACE McNELLEY

Glee Club 1, Pep Club 1-3, Beta Club 1-2, Lion's Roar Staff, (A. E) 1-2, FHA Reporter 1,2, FHA Secretary 3, Lib. Club 2, 3, Secretary 2, 4-H 1-3 Betty Crocker Award 3



DEBRA ANN MERRITT

Medical Careers Club 1-2, Library Club 2,3, Pep Club 1-3



WANDA FAYE MILLER

Pep Club 1-3, FHA 1, Library Club 2,3, Library Assistant 3, Office Assistant 3.



CAROL MITCHELL

Pep Club 1



GARY MORRIS

Pep Club 1,2, FFA 1



BILLY NICHOLS

Pep Club 1-3, S Club 2,3, Vice Pres. 3, NHS 3, Student Council 3, Basketball 1-3, All District 2, Football 1-3, Best Returning Lineman 2, All Tristate 3.



LINDA CAROL OTINGER

Pep Club 1-3, Library Club 1,2, Medical Careers Club 2,3, FHA 1-3, (VP) FHA Contest 2,3, SHS Contest 3

BILLY EA

F. F. A.

LINDA C

Nat. Hor

Sec. 2; F

Cl.; Stu

3; Span.

Semifin

Who's W

GEORGE

Nat. Ho

3 Sci. C

2 Stu. C

FTA 3,

Cent. A

Dele. 2

Band Sw

SAMMY

Trans.

Club 1

THOMAS

Student

2,3, Pr

Footbal

Christi

assistant

Who M

JESSE P

Pep Cl

Club 1

BILLY EARL PACE

F. F. A. 1; Pep Club, 1-2 S Club 2-3

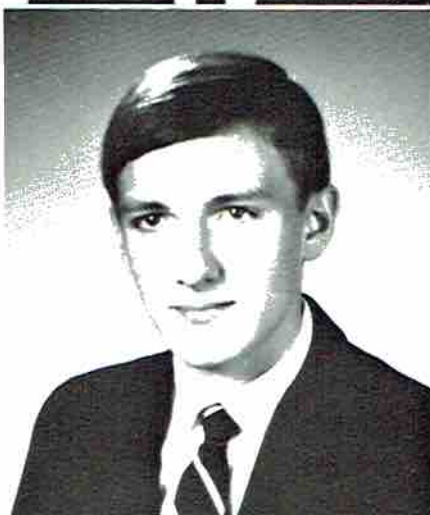


LINDA GAYLE PAGE

Nat. Hon. Soc. 1, 2, 3, Sec. 3; Sci. Cl. 2, 3, Sec. 2; FTA 2-3; VP 2; Pres. 3; Hon. Lat. Cl. ; Stu. Coun. 1, 2, 3; VP 2; Color Guard 3; Span. Cl. 2; Pep Cl. 1, 2; Nat. Merit Semifin. 2; Class Sec. 2 Class Typist 3; Who's Who Most Likely to Succeed 3

GEORGE PARKS

Nat. Hon. Soc. 2, 3 Pres. 3; Band 1-3, Capt. 3 Sci. Cl. 2-3 Treas. 2, VP 3; Pep Cl. 1-2 Stu. Coun. 2; Deb. Tm. 1-3, Capt. 3; FTA 3, Parli. 3; Sen. Class Treas. ; Tutor. Cent. Aide 3; All Star Band 2; Cit. Conf. Dele. 2; Boys' State 2; Nat. Merit Semifin. ; Band Swht 3; Who's Who Most Likely to Suc. 3

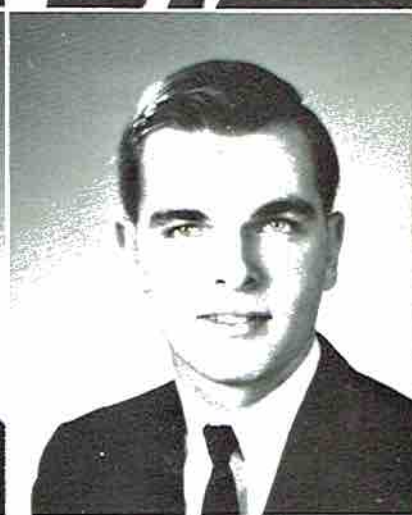


SAMMY PAULK

Trans. Stu. DE 3 Vice-Pres. 3; Band 1; Beta Club 1-2; FFA 1, 2

THOMAS GARY PERKINS

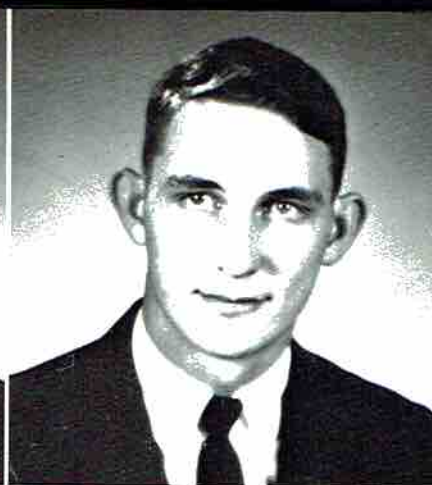
Student Council 1-2; Pep 1, 2, 3 S-Club 1, 2, 3, President 3; President Junior Class 2; Football 1, 2, 3; Basketball 1; Fellowship Christian Athletes 3, President 3; Office Assistant 2-3; Best Sportsmanship 3; Who's Who Most Considerate 3



JESSE PERRY

Pep Club 1, 2, 3; D. E. Club 3; Sportsmans Club 1





JOSEPH THOMAS PHILLIPS

Basketball 1; French Club 1; Mathematics Club 1; Literary Club 1; Pep Club 2, 3

MARVIN PHILLIPS

Football 1-3; Basketball 1; "S" Club 2, 3; FFA 3; D. E. Club 3; Pep Club 1-3; Most Valuable Lineman Spring 1966; Track 1, 2

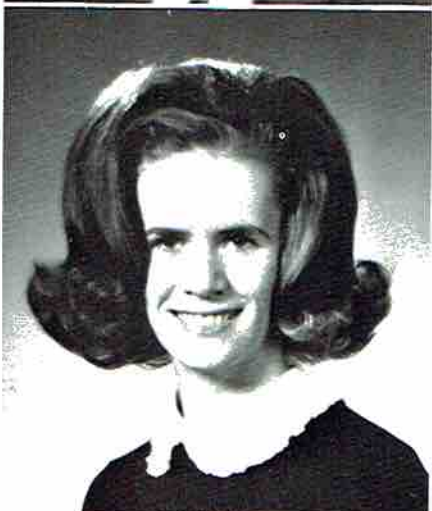


RANDY BURMAN PITTMAN

Library Club 1; Pep Club 1-3; D. E. Club 3

REGINALD L. POE

YFC Club President 1-3; All-Star Quiz Team President; Transfer Student



JACK POLAND

Pep Club 1-3; Wildcat Staff 2; Annual Staff 2; D. E. Club 3; Medical Career Club 3

SHIRLEY PORTER

FHA Club 1-3; Pep Club 2, 3



GLENN D. PRIMM

Pep Club 1-3

DORIS DEMONA PRINCE

Medical Careers Club 1-3; Pep Club 1-3; FHA Club 2; German Club 2; Youth for Christ 2

LARRY

FFA 1
Club 2

LINDA

FHA 1
ciety
Chap
Club 2
cil Rep
Who B

RODNEY

FFA 1

BEUN

Latin
Club,
2-3,
Scienc
State

THOMAS

VIE CL

DENNY

Transfe
D. E.
ball 1-



we have LAW at SHS??????????

LARRY DELBERT PROCTOR

FFA 1-3, Pep Club 1-3, Football 1-3, "S" Club 2-3, FFA Treasurer 3.

LINDA ROBERTS

FHA 1, Pep Club 1-3, National Honor Society 1-3, FTA 2-3, FTA Treasurer 3, Chaplain of Student Council 3, Spanish Club 2, Honorary Latin Club, Student Council Representative 1, Alternate 2, Who's Who Best All Round 3.



RODNEY RODGERS

FFA 1, VIE 3.

BEUNA GAIL ROGERS

Latin Club, Library Club 1-3, Science Club, FHA, National Honor Society, FTA 2-3, Pep Club 1-3, Attended Vanderbilt Science Lectures, Attended Jacksonville State Conferences

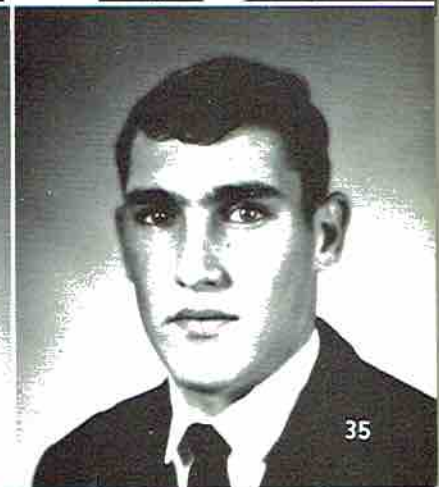


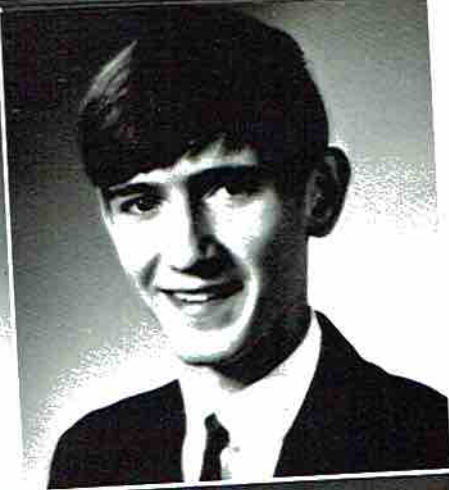
THOMAS W. SAINT

VIE Club 2-3.

DENNY RAY SANDERS

Transfer Student FFA 1-3, D.E. 3, Mr. D.E. Letterman's Club 1-2, Band 1, Football 1-2.



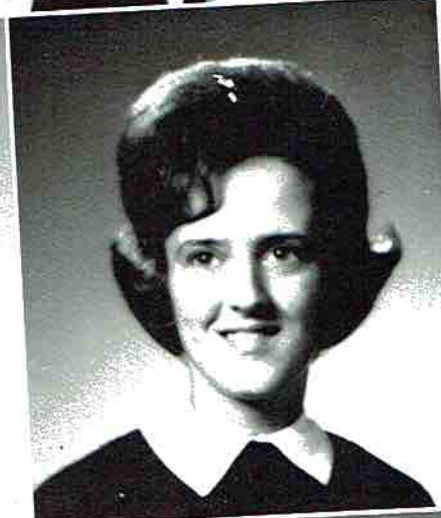


LINDA SUE SANDERS

Pep Club 1-3; FHA 1-3;

BEC SARRATT

Transfer Student; Band 1-3; Interact Club 1



PHYLLIS ANN SEBRING

FHA 1-3; Les Fluers YWCO 1-2; Orchesis Tri-Hi-Y 1-2; Medical Careers Club 3; Pep Club 3; Glee Club 1; Transfer Student

DEBBIE SIMMONS

Library Club 1-3; Pep Club 1-3; FHA 1, 3



PATRICIA SIMMONS

National Honor Society 1-3; FTA 2-3; FHA 3; Honorary Latin Club; Pep Club 1-3; Band 1-3; Student Council Typist 2; Senior Class Typist 3; Spanish Award 2; D. A. R. Good Citizenship Girl 3; Who's Who Most Dependable 3

DOUGLAS SINGER

Transfer Student; Science Club 1; Pep Club 3; "P" Club 2; Football 1-3; Track 1; Alternate Student Council 3;

JOYCE ANN SINGER

Transfer Student; FHA 1-3; "P" Club 2; Cheerleader 2; Medical Careers Club 3; Pep Club 3; Wildcat Staff 3; Assistant Editor 3; Reminder Staff 3; Editor 3; Who's Who Most Original 3;



BETTY ANN SISK

Pep Club 1-3; Band 1-3; Majorette 3; Medical Careers Club 1, 3; Science Club 2; FHA 3; Library Club 1; Fourth Runner Up in Miss Scottsboro High 2; Reminder Staff Features 3; Business Manager Wildcat Staff 3; Vice President Medical Careers Club 3; Band Sweetheart 3; Spanish Club 2; Who's Who Most Popular 3; FFA Sweetheart 3

INA MA

Library 1-3; D.

JUDY F

Medica 2, 3; Pe

CHARLE

Pep Clu Team 1 dent Co

NANCY

D. E. 2

BOBBY

Pep Cl Who's

LINDA

Pep C 2; Me



Bat



BETTY JOYCE TIDWELL

Pep Club 1-3; FHA 1 Library Club 1, 2
Library Assistant 1

JAMES TIDWELL

D. E. Club 2, 3



JOHN P. TIMBERLAKE

Transfer Student

JOYCE M. TREECE

FHA 1-3; D. O. 1; Pep Club 1-3



CHARLES UTTER

Pep Club 3

ALVIS F. WALES, JR.

Pep Club 1-3; Band 1-3; Drum Major 2, 3;
Library Club 1-3; Editor of Xmas Tourna-
ment 2, 3; FTA 3; Science Club 2, 3, Pres.
3; Student Council 3; Spanish Club 2; Hon-
orary Latin Club; National Honor Society
1-3 NHS State Convention 2; Boys State 2;
National Merit Scholarship Semi-finalist
3; Who's Who Most Talented 3



FAYE WARREN

FHA 1; Library Club 1-3; Pep Club 1-3;
Medical Careers Club 2; Reminder Staff 2;
Wildcat Staff 2

BILLY BOYD WEBB, JR.

Pep Club 1-3; Sportsman Club 2; FFA 3



JERRY

FFA 1-

PAUL

ARNOL

FFA 1;

LARRY

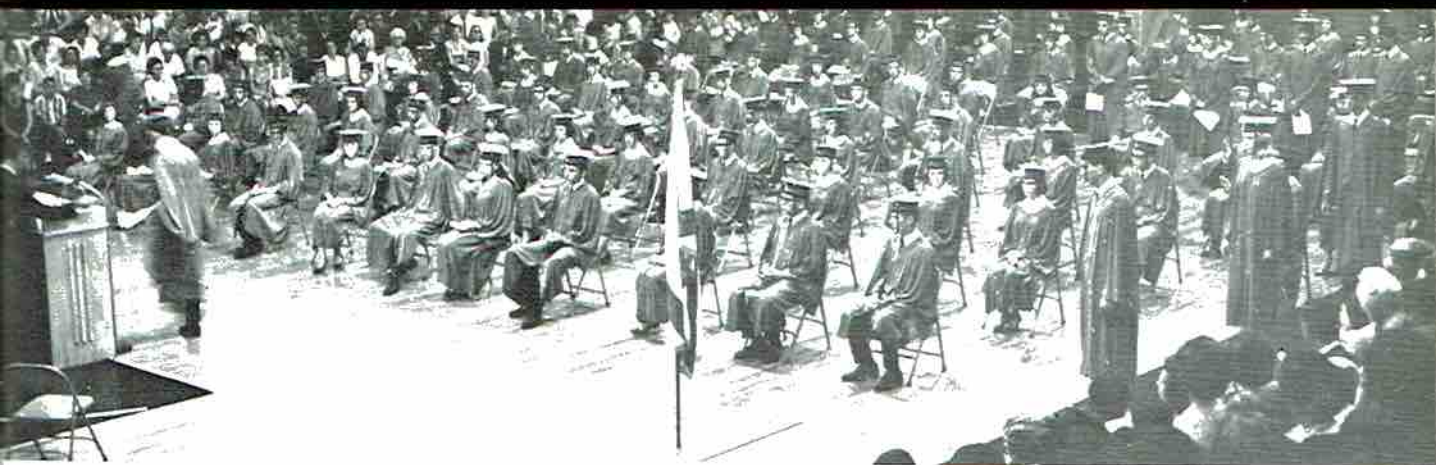
FB 1-3;
Class 2;
Coun. 3;
2; Trac
Span. M
AASC o
Test Yo

JIM WIL

Library
D. E. 3;

MARY S

Library
2, 3; V-
Club 1-
Club 2;



JERRY WEBB

FFA 1-3

PAUL WEEKS



ARNOLD WHEELER

FFA 1; Pep Club 2, 3; Sportsman Club 1

LARRY RUSSELL WHITE

FB 1-3; Span. Cl. 1, 2; Pep Cl. 1-3; V-P Jr. Class 2; NHS 1-3; Stu. Coun. 2, 3; Pres. Stu. Coun. 3; FCA 2, 3; "S" Cl. 2, 3; Boys State 2; Track 2; Who's Who Most Studious 3; Span. Med. 1; Deb. (Co-Capt.) 2, 3, (3); AASC conv. 2; Dele. Aia. Stu. Coun. 2; Test Your Best Panel Show 2



JIM WILBORN

Library Club 1, 2; Science 2; Pep Club 2; D.E. 3; Track 1; Sportsman Club 1

MARY SUSAN WILKINSON

Library Club 1; NHS 2, 3; Treasurer 3; FTA 2, 3; V-P 3; Student Council Rep. 2; Pep Club 1-3; Honorary Latin Club 1-3; Spanish Club 2; Senior Class Typist 3





PATRICIA ANN WILLIAMS

Transfer Student, FHA 3 Medical Careers
Club 2 Library Club 2, D.O. 1

CHARLES A. WILSON III

Pep Club 1-3; S Club 2,3 Football 1-3



TOMMY WILSON

Sportsman Club 1; Pep Club 2,3 Library
Club 3

GERALD THOMAS WININGER

Pep Club 1-3



BETTY ANN WOMACK

FHA 1,2; Library Club 1,2; Pep Club 1-3

BILLY R. WRIGHT

FFA 1; D.O. 2,3; President of D.O.
Mr. D.O.



SANDRA KAY WYNN

Pep Club 1-3; Library Club 1,2; Medical
Careers 3; Who's Who Neatest 3

DORIS JEAN YORK

Student Council 1; FHA 1; Pep Club 1-3

People, Places, and Things Seen On the Senior Trip to Houston, Texas



A Ghost Where? . . . In New Orleans Cemetery.



Astrodome



Lost in Bellingrath Gardens.



Do you think everyone in Houston will know we're seniors?



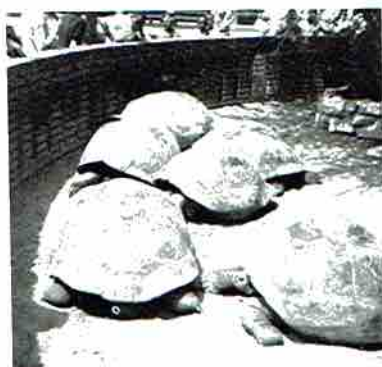
Al Hirt's home



It's either write home or don't go home.



Winchester Cathedral! . . . In New Orleans



Everything in Texas is big . . . Even turtles.



Romantic New Orleans



Frank decides to investigate

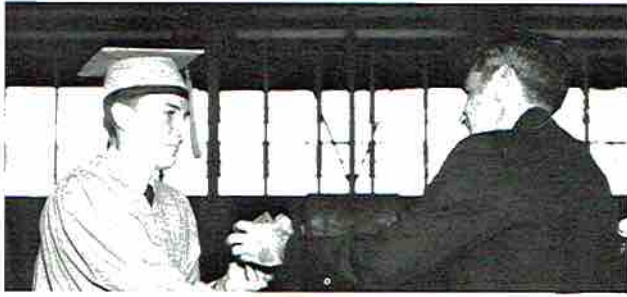


By the way. . . Are you from Scottsboro?



Would you believe. . . Future LSU students??

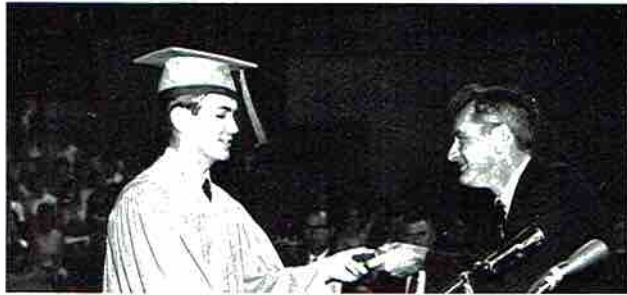
Graduation Honors



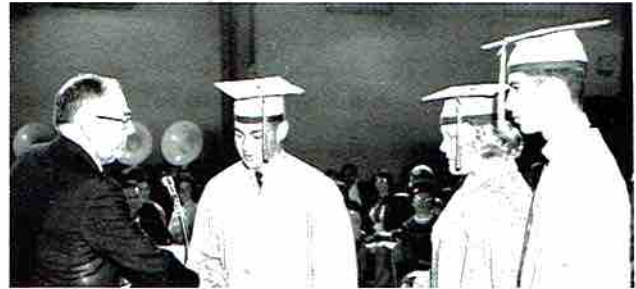
OUTSTANDING SENIOR BAND MEMBER
SENIOR CLASS TREASURER - George Parks



ALABAMA MUSIC TEACHERS
ASSOCIATION AWARD - Carol Keller



SCIENCE AWARD
Alvis Wales



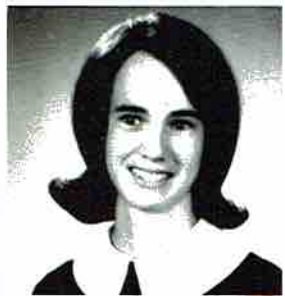
ROTARY CLUB SCHOLARSHIP
Eddie Akin, Doyle Ledbetter, Linda Dudley



ENGLISH MEDAL
Linda Roberts



FUTURE TEACHERS OF AMERICA SCHOLARSHIP
Linda Page



Linda Bass



Larry White

GOLD SEAL AWARD



SILVER SEAL AWARD
Woody Lansford, Alvis Wales, Beuna Rogers, Linda Page, Linda Roberts, Linda Dudley, Patricia Simmons.

and Awards



DANFORTH FOUNDATION AWARD
Eddie Akin - Linda Page



HOME ECONOMICS CRISCO AWARD
Edna Marsh - Linda Otinger



AMERICAN LEGION AWARD
Linda Bass



LIBRARY AWARD
Brenda Evett



BUSINESS EDUCATION AWARD
Faye Warren



BALFOUR HONOR AWARD - ATHLETIC AWARD
AFCEA JUNIOR FELLOWSHIP AWARD
Larry White



LIONS CLUB SCHOLARSHIP
Jesse Perry



AMERICAN LEGION AWARD
Woody Lansford



FORTNIGHTLY BOOK CLUB AWARD
Carol Culver



CIVITAN AWARD
Eddie Akin

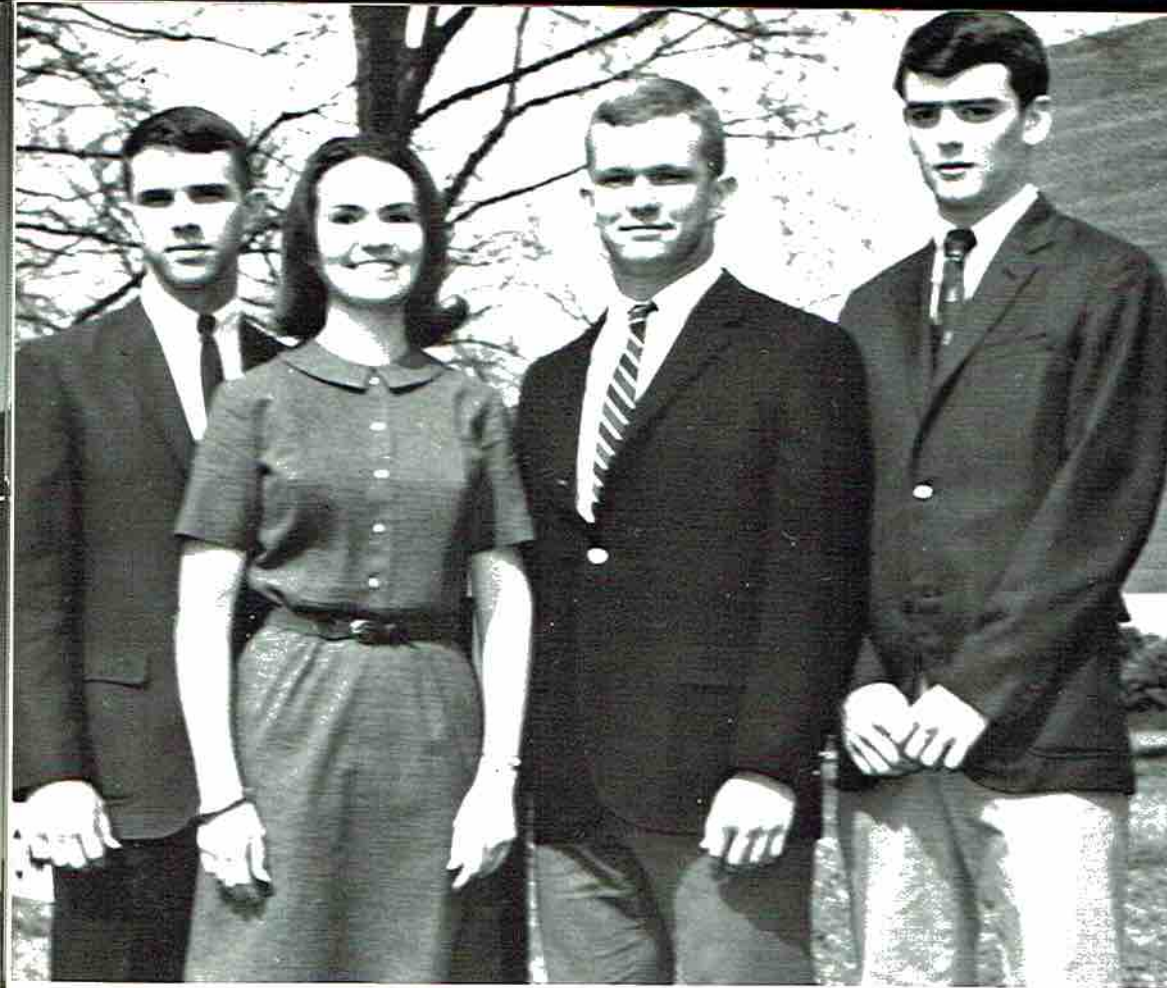
*Junior
Class
Officers*

President:
BRAD BRADFORD

Vice-President:
BILL WHITE

Secretary:
JIMMY BRAMBLETT

Treasurer:
SUZANNE SLOAN



Junior Class



J. W. Allen
Betty Arnold
Hunter Arnold
Sherry Atkins

Linda Bankston
Edna Batey
Jerry Bell
Patsy Berry

Richard Blackwell
Sharon Boozer
Brad Bradford
Charles Bradford

Jimmy Bramblett
Becky Brandon
Buford Brandon
Freida Brandon



Tommy Brandon
Pat Brazelton
Dianne Bristor
Betty Bufford



Kenneth Campbell
Carolyn Chambers
Roger Chaney
Phyllis Christa



Alvin Clemens
Brenda Clark
Eddie Collins
Ira Ann Copeland

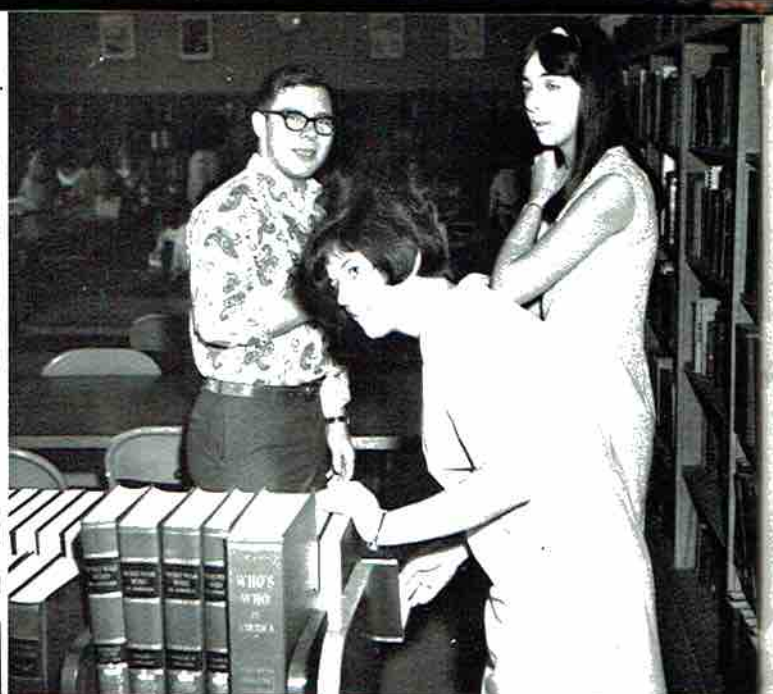


Helen Cornelison
Lucille Craft
Cathy Cranfill
Carol Davis



Ronnie Day
Mike Devers
Tommy Dilbeck
Margaret Drinkard





S. H. S... the world of the mini!

But I paid my fine!!!!



Jerry Evett
Wanda Evett
Ann Forrester
Karen Fossett



Johnny Fowler
Vann Gable
Patsy Gamble
Virginia Gardner



Robert Gass
Shirley Gattis
Jan Gentle
Lonnie Gray



Gerry Griggs
Joe Wayne Guffey
Patricia Guinn
Shelia Guinn

Syble
Nancy
Belinda
Glen

Ronni
Sandi
Mark
Joann

Dona
Helen
Clyde
Fred

Larry
Mike
Cathy
Charli

Wayne
Ronnie
Carolyn
David

Kei
Ran
Kay
Con

Syble Hall
Nancy Hammer
Belinda Hancock
Glenn Hardin



Ronnie Henderson
Sandra Henegar
Mark Higginbotham
Joann Hill



Donald Hodges
Helen Hoge
Clyde Holder
Fred Holder



Larry Holder
Mike Hollis
Cathy Ivey
Charlotte Jeffery

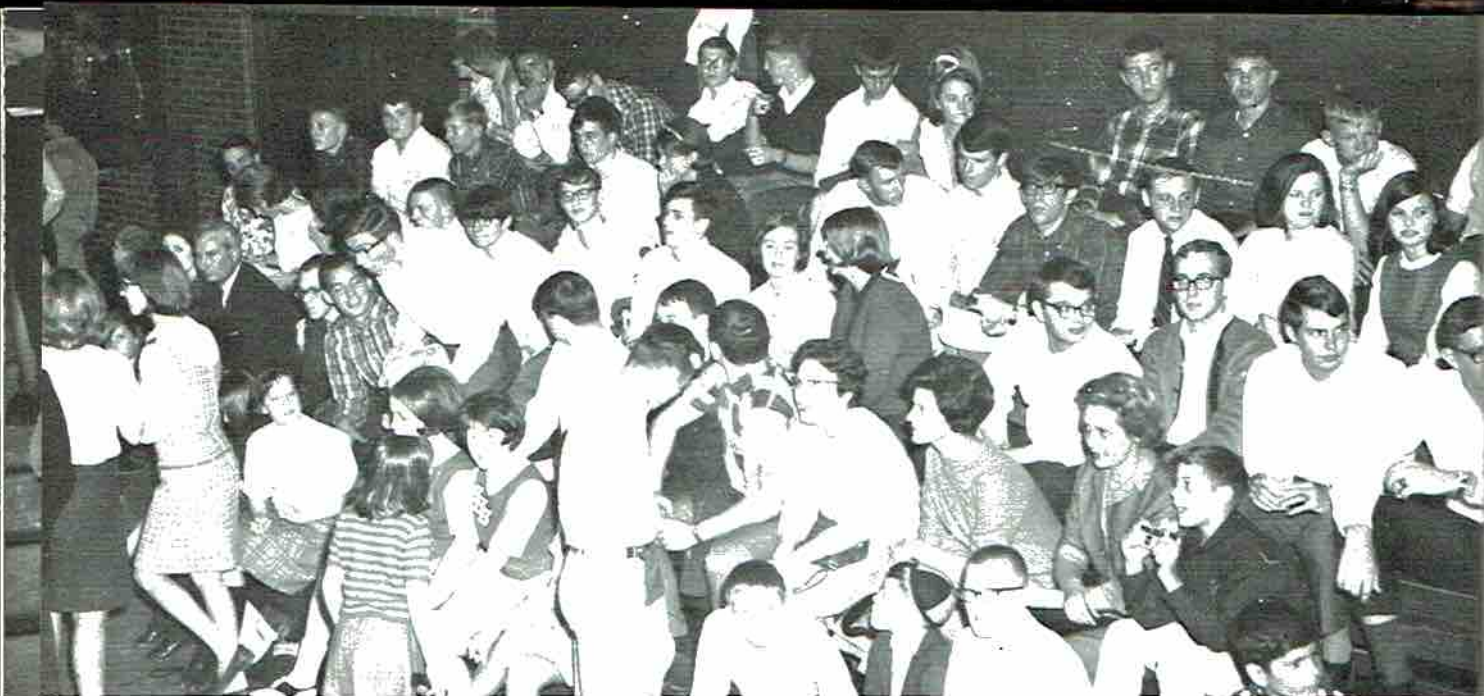


Wayne Jeffery
Ronnie Jones
Carolyn Johnson
David Johnson



Keith Johnson
Randy Junior
Kay Keeton
Connie Keel





Juniors enjoy State Tournament.



Jo Ed Keller
Darrell Latham
Randy Latham
Nora Ledwell



Linda Light
Mike Linville
Larry Lockard
Celia Long



Jimmy Long
Ricky Long
Janis Lowe
Bruce Manning



Joan Manning
Cathy Martin
Kenneth Matthews
Shanon McBride

The
Den
Jerr
Gai

Ran
Phy
War
Lin

Fred
Pau
Phil
Pan

Glenn
Rich
Tim
Tom

Kath
Mic
Cha
Keit

Ken
Glen
Lind
Juan

Theresa McClure
Dennis McCrary
Jerry McCrary
Gail Moore



Randy Moore
Phyllis Middleton
Wanda Necklaus
Linda Nicholson



Freda Noblett
Paul Oneal
Phillip Pettus
Pam Pence



Glenda Pottor
Richard Payne
Tim Poole
Tommy Precise



Kathy Ray
Micky Roberts
Charlotte Rodgers
Keith Rodgers



Kenneth Saint
Glenda Seabolt
Linda Seabolt
Juan Selby





Right flank



"A hunting we will go "



Yvonne Selby
Gail Sharp
Patsy Sharp
Gwen Sheppard



Kenneth Shrader
Ray Simmons
Nancy Sisk
Scott Skelton



Suzanne Sloan
Brenda Smart
Larry Smith
John Southard



Mike Staton
Paul Stevenson
Roy Swearingin
Phillip Tanner

Donald Thomas
 Diana Thompson
 Bill Walden
 Carolyn Walker



Theresa Watson
 Richie Weavil
 Gene Webb
 Glenn Webb



Bill White
 Billy White
 Janie White
 Linda White



Brenda Wilbourn
 Rosie Wilson
 Mary Williams
 Mary Belinda
 Williams



Carol Winger
 Linda Winger
 Bobby Woosley
 Reba Womack



Jeannine Worel
 Brad Yates
 Larry York
 Reba Young





*Sophomore
Class
Officers*

- President:
MIKE THORNTON
- Vice-President:
VINCE PEARSON
- Secretary:
BETH COLLINS
- Treasurer:
NANCY CAMPBELL

Sophomore Class



- Glenda Adams
Kenneth Adams
Debbie Adkins
Kay Akin



- James Anderson
Bettye Ashmore
Peter Atkins
Beverly Barclay



- Renee Bass
Charlotte Batey
Diane Bellomy
Susan Boggus

Jimmy Bolding
 Johnny Bolton
 Danny Bradford
 David Bradford



Eugene Bradford
 Lorene Bradford
 Sammy Bradford
 Cheryl Broomer



Donna Broyles
 Johnny Bullock
 Sue Byrd
 Sheila Callahan



Deborah Campbell
 Nancy Campbell
 Wanda Campbell
 Larry Cardwell



Peggy Chambers
 George Chance
 Kay Chapman
 Ray Chapman



Barry Childers
 Blaine Childress
 Jim Clark
 Mike Clark





Reba Clark
Janice Clemons
Beth Collins
Cathy Combs



Winfred Cotten
Thomas Crumbly
Nancy Carol
Cunningham
Gary Curtis



Mildred Daniel
William David
Darwin
Jimmy Day
David Downey



Martha Ann
Downey
Louise Eakin
Winfred Edmonds
Georgia Edwards



Terry Fowler
Gail Frazier
Jeanne Fredricks
Leslie French



Wilma Gamble
Patricia Greene
Gary Hall

Janet Hammon
Jimmy Hampton
Shirley Harding
Garvin Hardyman



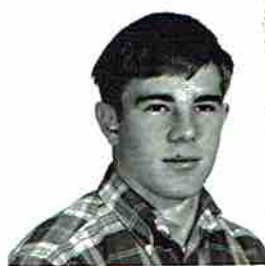
Doris Harris
Jackie Harris
Donald Hastings
W. A. Haswell



Debra Helton
Rick Henley
Jim Henshaw
Gene Hess



Terry Hess
Charles Hicks
Howard Hill
Durwood Hodges



Hank Hodges
Billy Holcomb
Gene Holder
Thomas Holt



Martha Hooper
Faye Jackson
Grady Jacobs





Rita Jacobs
 Carol James
 Donald Jeffery
 Ann Johnson

Sue El
 Paulet
 Charle
 Clondi



Debbie Johnson
 Judy Johnson
 Wallace Johnson
 Willie May Johnson

Linda
 Jerry M
 Patric
 Tomm



John Jones
 Pam Jones
 Donald Judge
 Carol Keller

Trudye
 Sharon
 L. J. M
 Britt M



Tommy Kennamer
 Robert Kilgro
 Mary Killingsworth
 Wesley King

Rita M
 Jo An
 Betty
 Mark



Marvin Lands
 Randy Latham
 Nalda Ledbetter
 Roy Light

Eugen
 John
 Terry
 Janic



Glenn Little
 Susan Livingston
 Barbara Long

Marth
 Meta
 Truel

Sue Ellen Machen
 Paulette Majors
 Charles Marsh
 Clondia Martin



Linda McCarver
 Jerry McClendon
 Patricia McCrary
 Tommy McCullough



Trudye McDonald
 Sharon McGehee
 L. J. McLemore
 Britt Meeks



Rita Mitchell
 Jo Ann Moore
 Betty Murphy
 Mark Murphy



Eugene Nabors
 John Neely
 Terry Neeley
 Janice Nelson



Martha Neyman
 Meta Nichols
 Truell Noles





Virginia O'linger
 Steve Parsons
 Paul Patchin
 Dickey Patrick



Sandra Patterson
 Vince Pearson
 Jimmy Perkins
 Brenda Phillips



Janice Phillips
 Diane Pipes
 Pauline Potter
 Wanda Potter



Lovonne Precise
 David Presley
 Nita Price
 Wendell Proctor



Kert Reedstrom
 Linda Roberts
 Jimmy Robertson
 Karen Rook



Robert Rook
 Susan Rorex
 Larry Rounsvall

Dorothy Russell
Dale Saint
Virginia Saint
Kay Sanders



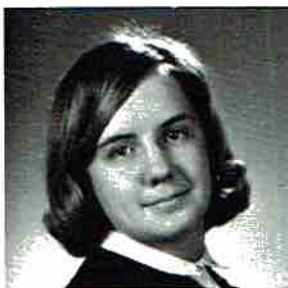
Janet Scroggins
Patsy Selby
Diane Sharp
Lewis Shults



Nadine Shults
Kathy Simmons
Freida Simpson
Helen Smith



Wanda Southard
Brenda Steeley
Judy Steeley
Bill Talley



Teri Thomas
Mike Thornton
Sarah Timberlake
David Tubbs

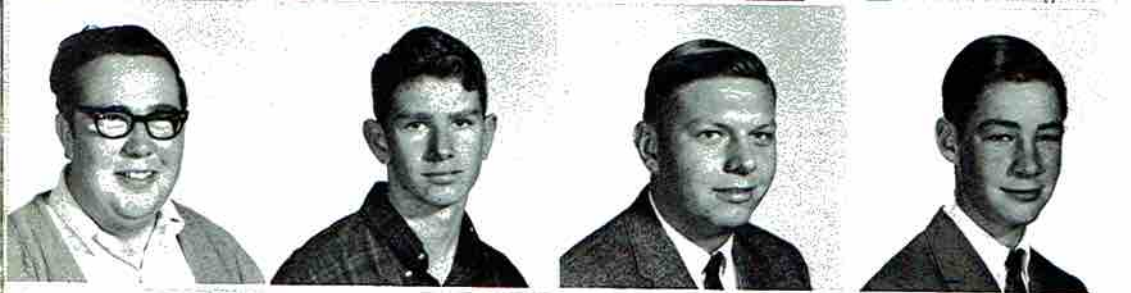


Wanda Tubbs
Robert Turner
Tommy Underwood





Jean Utter
Pamela Utter
Danny Vandiver
Elaine Venable



Robert Walker
William Wallingsford
Jimmy Webb
Ronald Webb



Wayne Webb
Leslie Wells
Jesse Wetherington
Pam Wilhelm



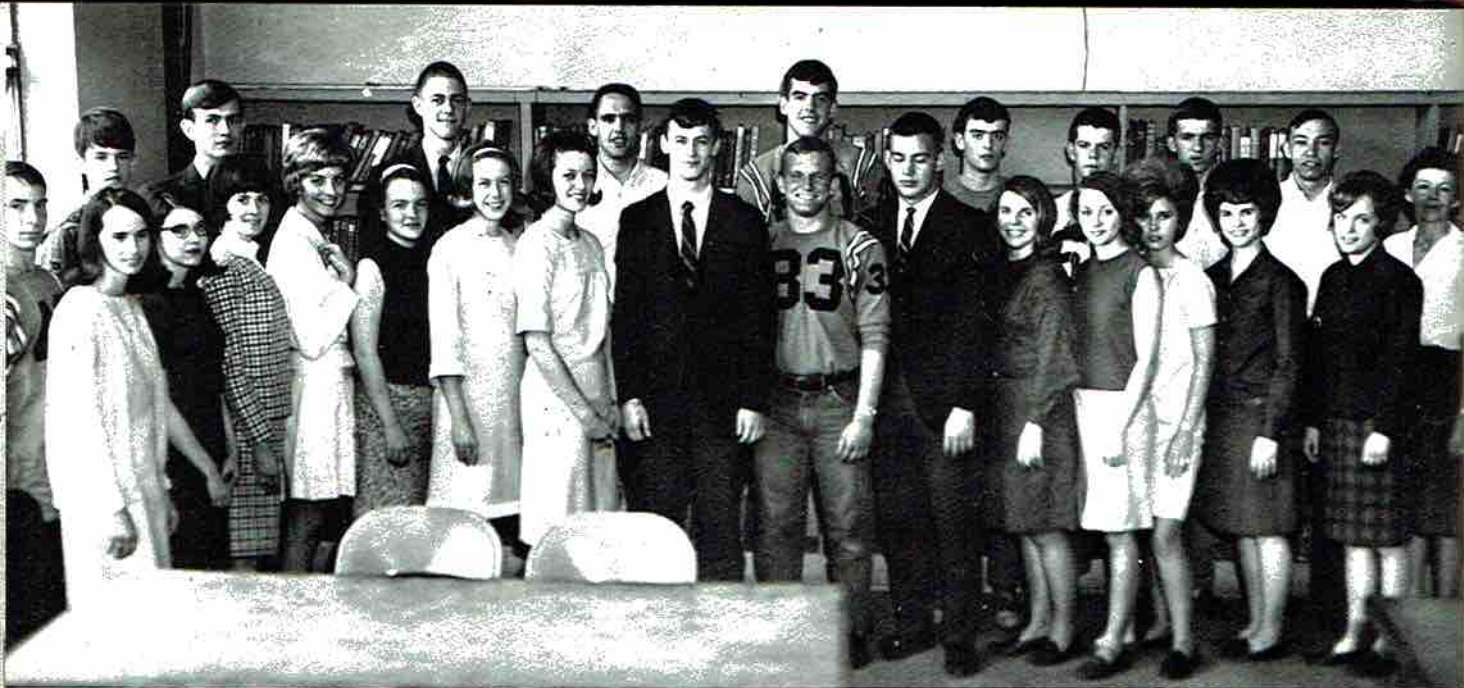
Patricia Wilkerson
Sandra Wilkerson
Jim Williams
John Williams



Judy Williams
Diane Wilson
Gilbert Winger
Jackie Womack



Willard Woodall
Billy Wright
Pat Zilbert



1st ROW: Linda Bass, Linda Page, Nancy Campbell, Dianna Brandon, Martha Neymen, Deborah Campbell, Linda Roberts, Larry White, Brad Bradford, Eddie Akin, Jan Gentle, Nancy Lynch, Imogene Winkles, Glenda Seablot, Kay Chapman. BACK ROW: Paul Stevenson, Dickie Patrick, Alvis Wales, Vince Pearson, Robert Hester, Ray Simmons, Bill White, John Williams, Jimmy Perkins, Larry Lockard, Mrs. Sanders.

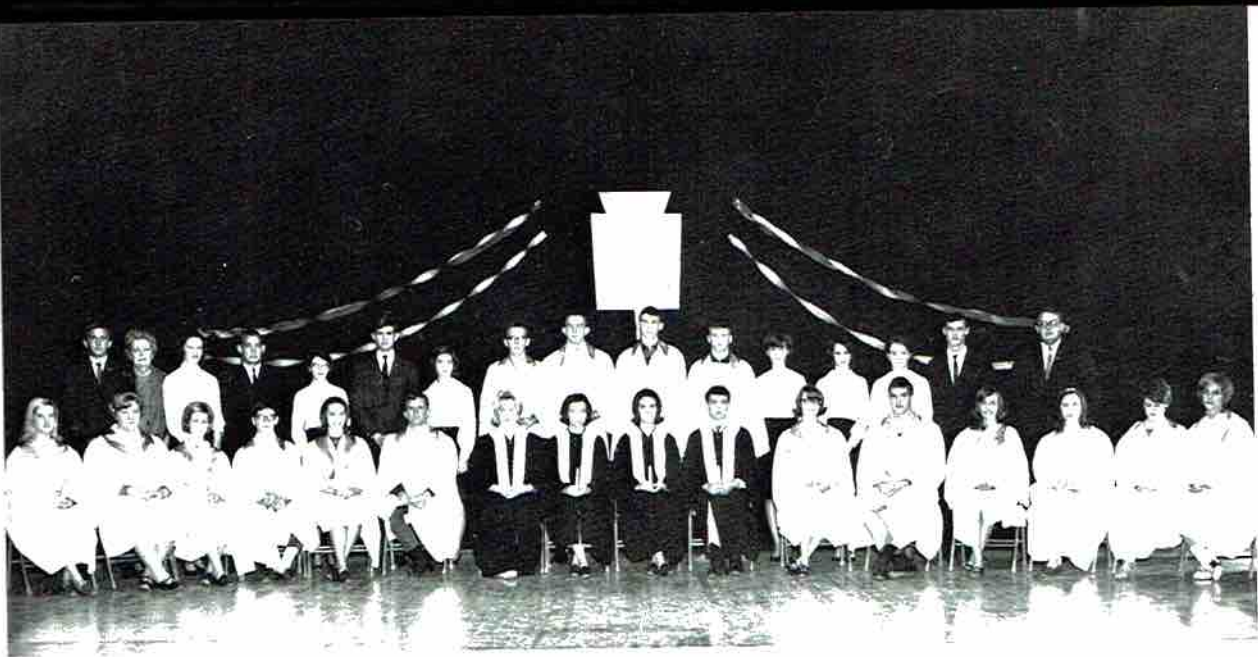
Student Council

OFFICERS

President ----- LARRY WHITE
 Vice-President ----- BRAD BRADFORD
 Secretary-Treasurer ----- EDDIE AKIN
 Chaplain ----- LINDA ROBERTS
 Sponsor ----- MRS. SANDERS



Caro
 Juan
 Lind
 Alvi
 mon



Carol Keller, Linda Dudley, Sharon Boozer, Scott Skelton, Virginia Gardner, Brad Bradford, Patsy Berry, Juan Selby, Suzanne Sloan, Bill White, Wanda Necklaus, Ray Simmons, Beuna Rodgers, Yvonne Selby, Linda Bankston, Dianne Brandon, George Parks, Mrs. Hanbrick, Linda Roberts, Eddie Akin, Linda Page, Alvis Wales, Haden Hodges, Woody Lansford, Billy Nichols, Mike Linville, Hank Fraizer, Patricia Simmons, Linda Bass, Susan Wilkinson, Larry White, Wayne Edmonds.

National Honor Society



OFFICERS:

President - - - - -GEORGE PARKS
 Vice-President - - - - LINDA BASS

Secretary - - - - - LINDA PAGE
 Treasurer - - - - - SUSAN WILKINSON
 Sponsor - - - - - MRS. HAMBRICK



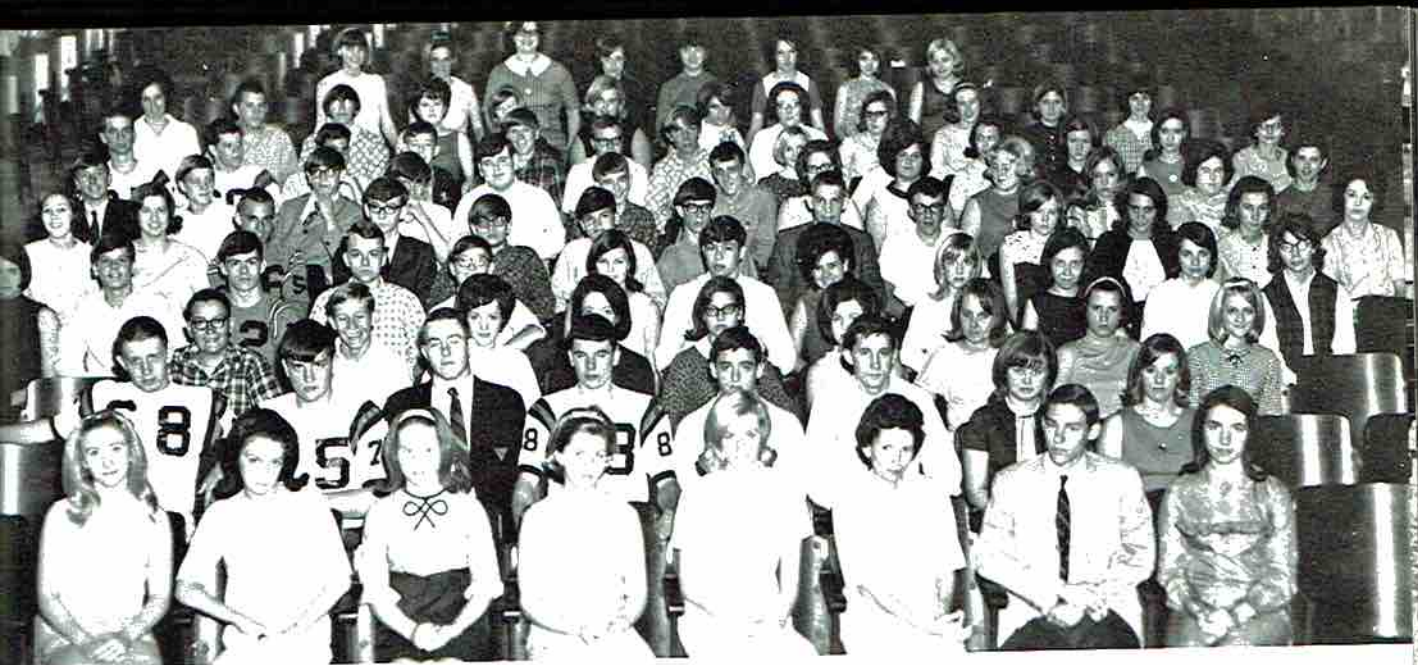
Susan Wilkinson, Suzanne Sloan, Linda Page, Linda Roberts, Linda Bass, George Parks, Mrs. Armstrong, Ray Simmons, Cathy Ray, Nancy Hammer, Patricia Simmons, Janice Gentle, Virginia Gardner, Becky Brandon, Nancy Lynch, Haden Hodges, Linda Chapman, Brenda Smart, Bill White, Wanda Necklaus, Ann Forrester, Paul Stevenson, Yvonne Selby, Patricia Gamble, Beuna Rogers, Linda Bankston, Freida Brandon, Sylvia Martin, Carol Keller, Paul-ette James, Wayne Edmonds, Alvis Wales, Brad Bradford.

D. Bro
T. Bra
B. Mur
Sheppa
M. Tho
mack,
B. Han
Payne,
Fossett,
Marsh,

Future Teachers of America

- President - - - - -LINDA PAGE
- Vice-President - - - - - SUSAN WILKINSON
- Secretary - - - - - SUZANNE SLOAN
- Treasurer - - - - -LINDA ROBERT'S
- Historian - - - - -LINDA BASS
- Parliamentarian - - - - -GEORGE PARKS
- Sponsor - - - - -MRS. ARMSTRONG





D. Broyles, D. Pikes, G. Adams, S. Boozer, B. Sisk, Mrs. Allen, B. McCamy, B. Collins, H. Hodges, J. Anderson, T. Brandon, K. Johnson, F. Haas, L. Kirkland, P. Jones, S. Jones, J. Matthews, P. Holder, K. Wynn, S. Airheart, B. Murphy, C. James, J. Smith, G. Potter, C. Broome, S. Boggus, R. Weavil, B. Yates, T. Poole, S. Skleton, G. Sheppard, R. Jones, S. Tally, N. Price, J. Selby, L. O'tinger, J. Hammonds, S. McBride, S. Guinn, P. Patchin, M. Thornton, T. Dilbeck, R. Junior, R. Henley, J. Poland, B. Cowley, B. Phillips, L. Bradford, D. Prince, J. Womack, J. Neeley, T. Neeley, K. Reedstrom, D. Bradford, T. Underwood, D. Downey, C. Marsh, N. Cunningham, B. Hancock, J. Lowe, P. Chandler, L. Rounsvall, J. Williams, J. Clark, J. McClendon, M. Fredericks, R. Gass, R. Payne, T. Thomas, B. Barclay, M. Downey, M. Hooper, K. Akin, C. Rogers, J. Singer, J. Bolton, B. White, K. Fossett, D. Bellomy, K. Rook, S. Livingston, J. Steeley, B. Steeley, D. Campbell, J. Nelson, N. Campbell, E. Marsh, P. Sebring, S. Machen, K. Chapman, P. Greene, W. Tubbs, J. Clemens, C. Culver, P. Berry, J. Worel

Medical Careers Club

OFFICERS

President - - - - - BILL McCAMY
 Vice President - - - - - BETTY SISK
 Secretary - - - - - SHARON BOOZER
 Reporter - - - - - BETH COLLINS
 Sponsor - - - - - -MRS. ALLEN





Future Homemakers of America

OFFICERS OF FHA

- President ----- EDNA MARSH
- Vice President ----- LINDA OTINGER
- Secretary ----- ANITA McNELLEY
- Treasurer ----- LINDA SEABOLT
- Historians ----- SHARON BOOZER,
YVONNE SELBY
- Parliamentarian ----- PATRICIA CHANDLER
- Reporter ----- PAM PENCE
- Photographer ----- SHERRY JONES
- Sponsors ----- MRS. W. W. MATTHEWS
MRS. DORAN INGRAM
- Pianist ----- KAREN FOSSETT

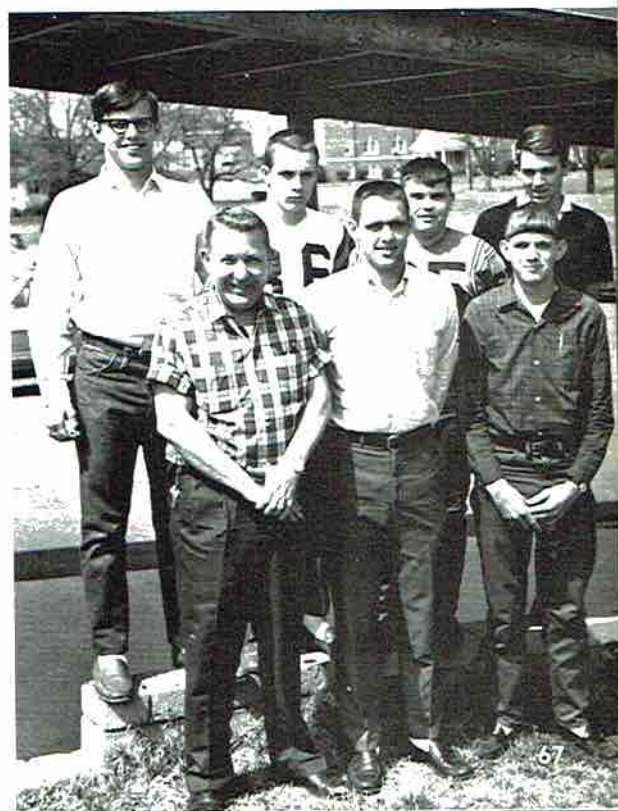




FUTURE FARMERS OF AMERICA
 THE NATIONAL ORGANIZATION FOR BOYS  STUDYING VOCATIONAL AGRICULTURE

OFFICERS

- President - - - - - ROBERT HESTER
- Vice President - - - - - LARRY HOLDER
- Secretary - - - - - JESSE WETHERINGTON
- Treasurer - - - - - LARRY PROCTOR
- Sentinel - - - - - KENNETH MATTHEWS
- Reporter - - - - - KEITH RODGERS
- Sponsor - - - - - MR. HOPPER





OFFICERS

President - - - - - VIRGINIA GREEN
 Vice President - - - NANCY HAMMER
 Secretary - - - - - BETH COLLINS
 Treasurer - - - - - FREIDA BRANDON



ASSISTANTS

Charlotte Batey, Sue Byrd, Brenda Evett, Georgia Edwards, Edna Batey, Pam Utter, Mildred Daniels, Mrs. Heath, Wanda Miller, Virginia Saint, Jackie Harris, Carolyn Chambers

Hank
 Sisk,
 Gentle
 Hader

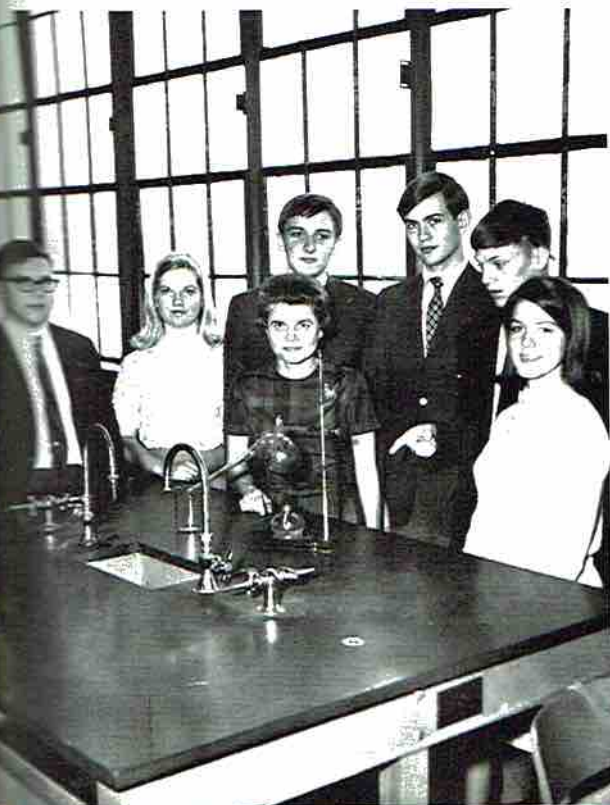
Library Club and Assistants



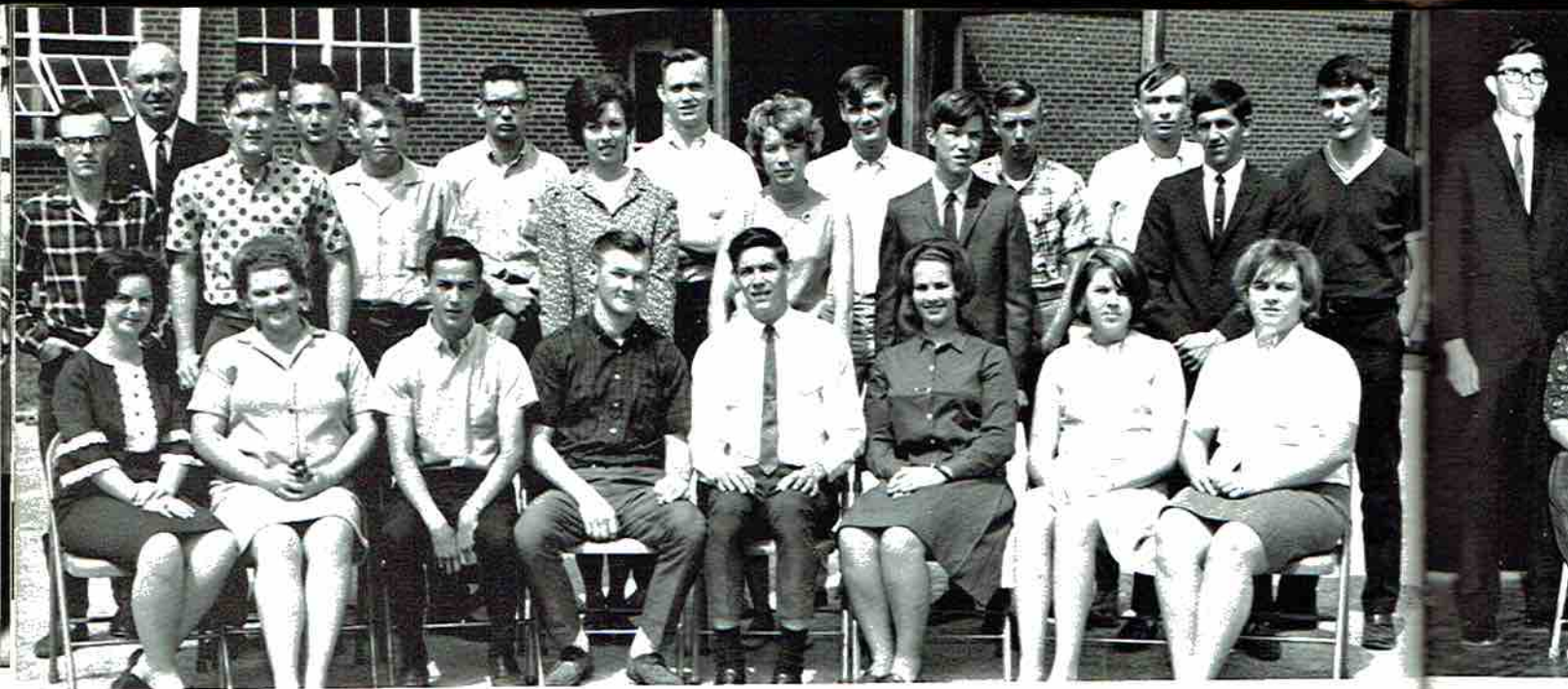


Hank Frazier, George Parks, Alvis Wales, Carol Keller, Mike Hollis, Mrs. Lee, Glenn Hardin, J. W. Allen, Nancy Sisk, Pat Gamble, Becky Brandon, Frank Haas, Woody Landsford, Alvin Clemens, Lenell Amos, Patsy Berry, Jan Gentle, Gwen Sheppard, Randy Junior, Tommy Brandon, Linda Page, Brenda Griffin, Linda Bankston, Suzanne Sloan, Haden Hodges, Virginia Gardner, Sylvia Martin, Tommy Dilbeck, Ronnie Jones, Bill McCamy.

Science Club



President	-----	ALVIS WALES
Vice-President	-----	GEORGE PARKS
Secretary	-----	HADEN HODGES
Treasurer	-----	CAROL KELLER
Reporter	-----	MIKE HOLLIS
Parliamentarian	-----	HANK FRAZIER
Sponsor	-----	MRS. J. LEE



Audrey Tate, Patricia Williams, Charles Keel, Paul Lusk, Billy Wright, Linda Seabolt, Terry McClure, Joyce Treece, Bobby Cornelison, Jerry Evett, Miles Hammon, Paul O'Neal, Jesse Hoge, Helen Hastings, Thomas Saint, Mildred Lusk, Claude Evett, Mike Staton, Bruce Manning, Paul Weeks, Rodney Rogers, Marvin Phillips

Betty
ston,
Hastin

Diversified Occupations



OFFICERS

President ----- BILLY WRIGHT
 Vice-President ----- PAUL LUSK
 Secretary ----- LINDA SEABOLT
 Treasurer ----- CHARLES KEEL
 Reporter ----- TERRY McCLURE
 Sponsor ----- MR. J. R. PORCH



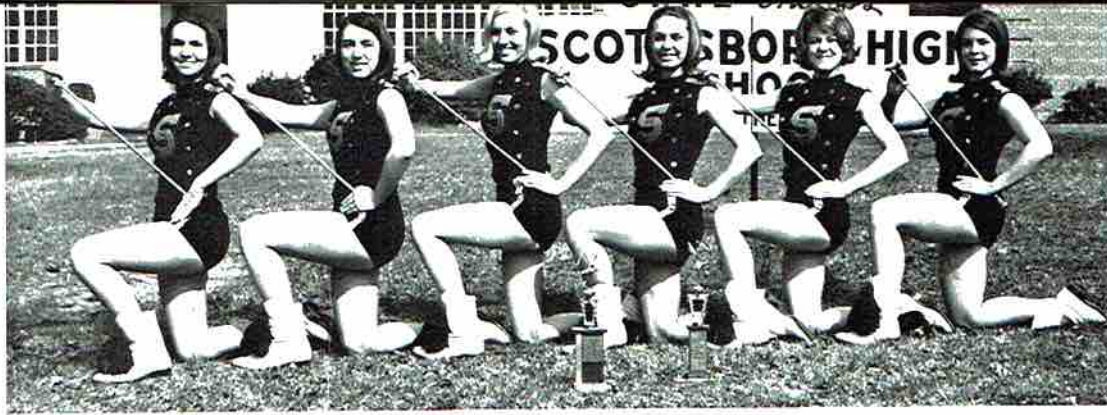
Betty Bufford, James Tidwell, Sammy Paulk, Phillis Christa, Lenell Amos, Lonnie Gray, Wayne Jeffery, Danny Johnston, Mr. Barnes, Randy Pittman, Doyle Ledbetter, Jesse Perry, Jackie Poland, Gene Webb, Dennie Sanders, Bobby Hastings, Jim Wilborn, Thomas Bradford.

Distributive Education



OFFICERS:

- President ----- JAMES TIDWELL
- Vice-President ----- SAMMY PAULK
- Secretary-Treas. ----- PHYLLIS CHRISTA
- Sponsor ----- MR. KENNETH BARNES
- Reporter ----- LENNEL AMOS



Majorettes of 1966-67 are proud of the two superior ratings and their trophies.

Majorettes 1966-67



BETTY SISK,
Senior



SUZANNE SLOAN (Head)
Junior



HADEN HODGES,
Senior



LINDA BANKSTON,
Junior



BETH COLLINS,
Sophomore



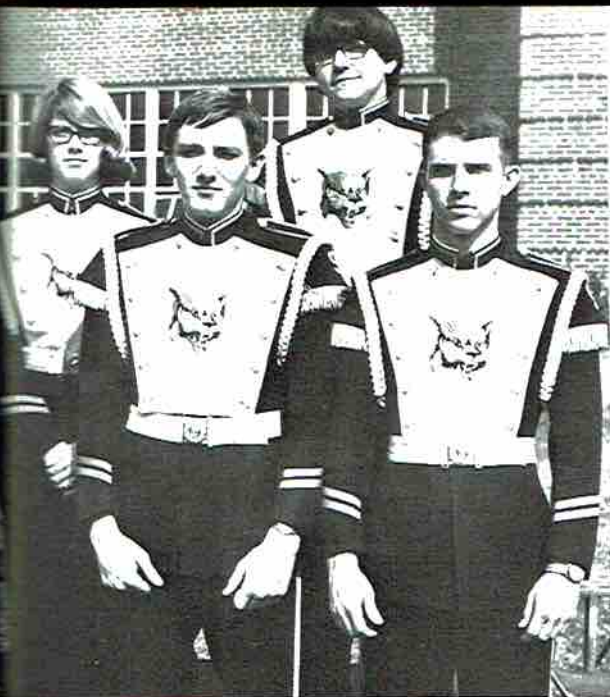
VIRGINIA GARDNER,
Junior



GEORGE
MARTIN



KERT R
PAGE,



Band Officers

GEORGE PARKS, JIMMY BRAMBLETT SYLVIA
MARTIN, VAN GABLE



Drum Major

ALVIS WALES



Color Guard

KERT REEDSTROM, CAROL KELLER, NITA PRICE, LINDA
PAGE, CHERYL BROOME, JOHN NEELEY



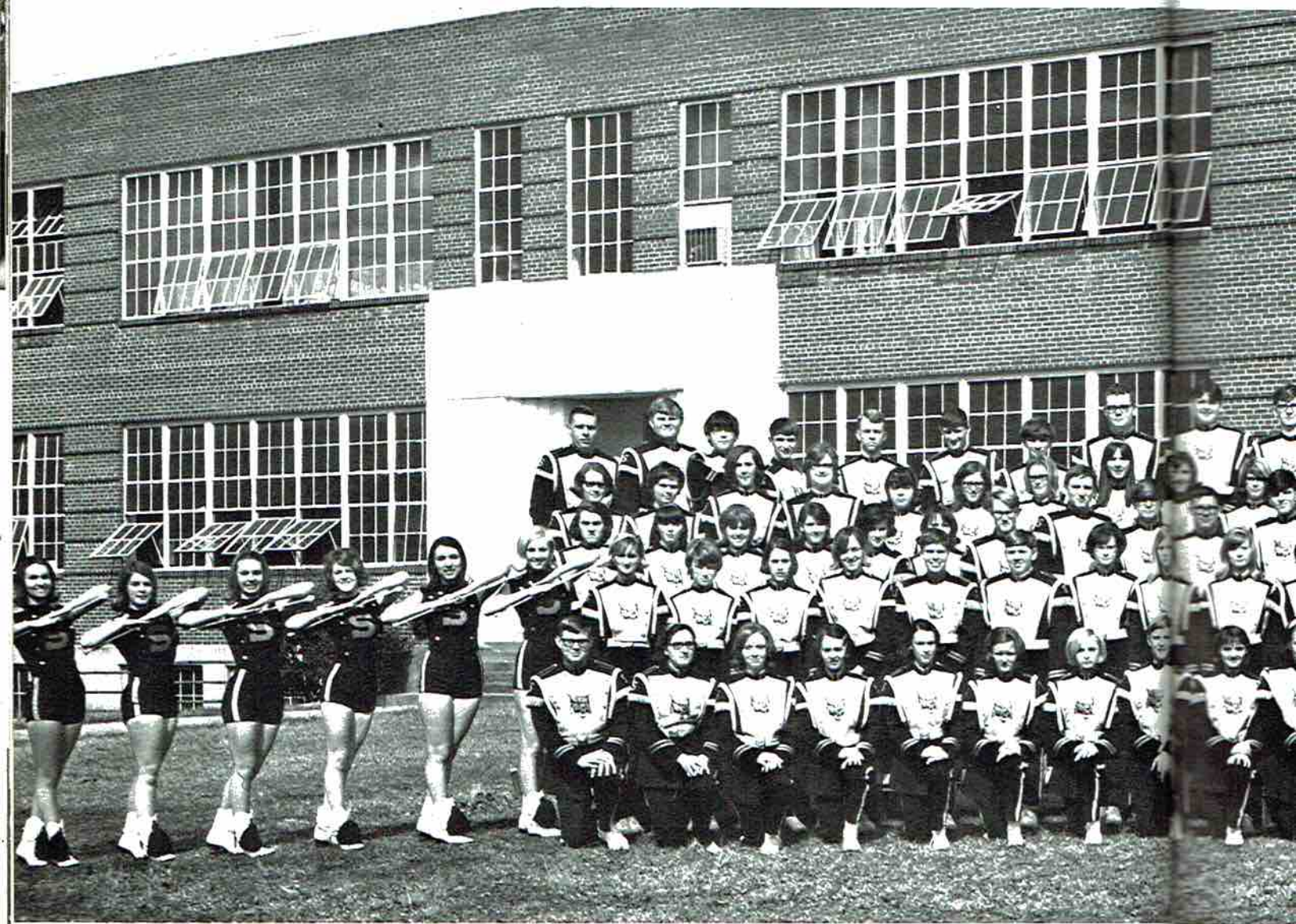
Band Director

JACK COX



Band Banquet

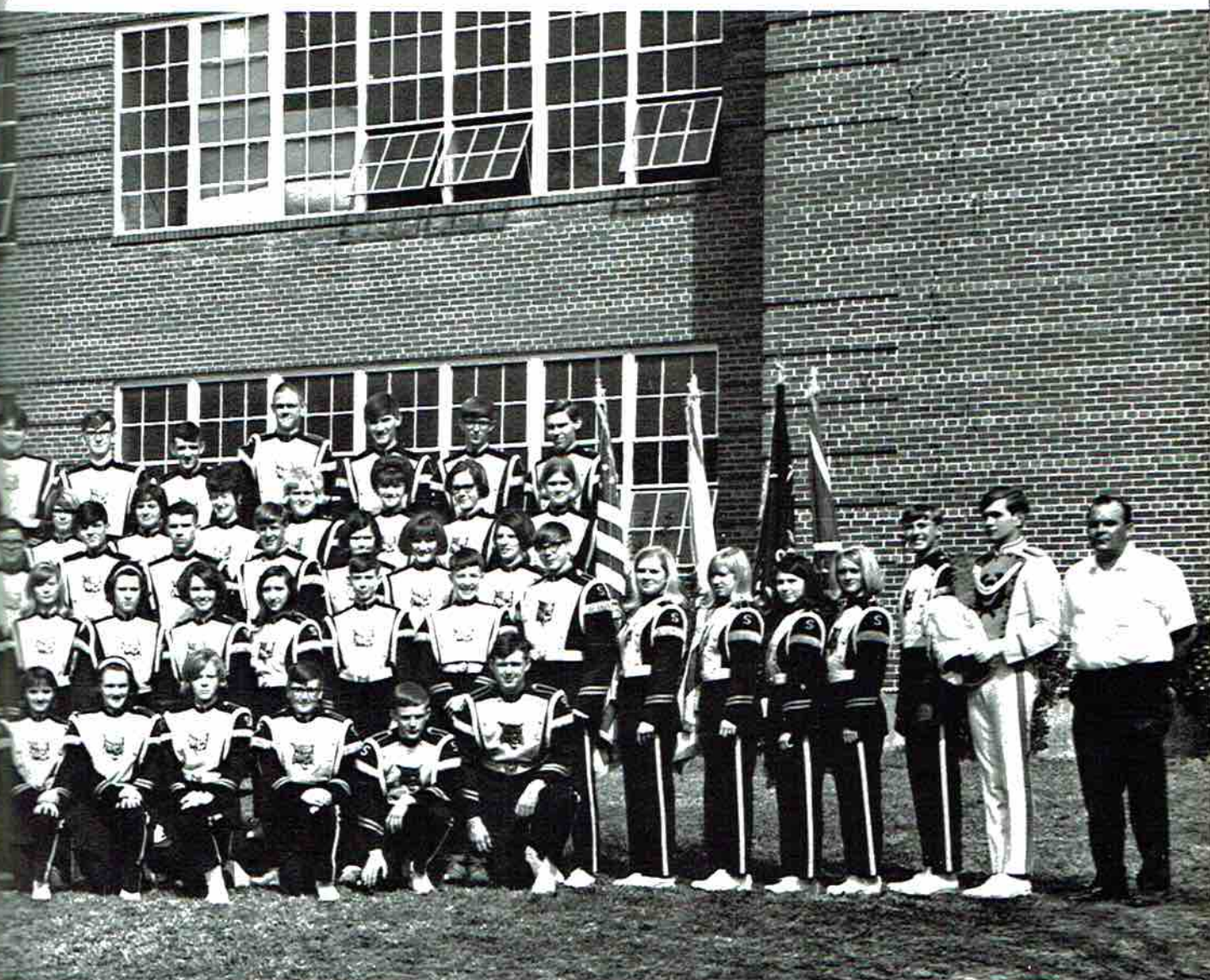
Scottsboro High School



Band Director - Jack Cox, Drum Major - Alvis Wales, Color Guard - John Neely, Cheryl Broome, Linda Page, Nita Price, Carol Keller, Kert Reedstrom. Majorettes - Suzanne Sloan, Haden Hodges, Virginia Gardner, Linda Bankston, Beth Collins, Betty Sisk. 1st ROW - Robert Lee, Carol Evans, Mary Campbell, Sharon McCamy, Martha Downey, Martha Hooper, Teri Thomas, Terry Neely, Janice Clemens, Martha Neyman, Brenda Phillips, Phil Phillips, Randy Airheart, Bill Tally, 2nd ROW - Sandra Henegar, Jean Keller, Beverly Smith, Cynthia Berry, Jim Clark, Jimmy Robertson, Charlotte Rogers, Becky Brandon, Diane Bellomy, Glenda Potter, Patricia Simmons, Kay Akin, David Swaim, Jerry McClendon.

3rd ROW
Hicks,
Barclay,
Mach
Linda
Lemon
wood,

School Band



3rd ROW - Marilyn Morris, Deborah Glass, Connie Collins, Doris Murphy, Freida Brandon, Janice Cornelison, Eddie Hicks, George Parks, Tommy Dilbeck, Mike Hollis, Randy Junior, Jimmy Bramblett, Kenneth Woosley, Beverly Barclay, Betty Howland, Drenda Nichols. 4th ROW - Debbie Johnson, Pam Wilhelm, Shanon McBride, Sue Ellen Machen, Patricia Green, Nita Kern, Janet McGahey, Brenda Smart, Sandra Brandon, Sylvia Martin, Cathy Ray, Linda White, Patsy Berry, Carol Keller, Nancy Cunningham, Janice Nelson. 5th ROW - Jimmy Webb, L. J. Mc-Lemore, Van Gable, Danny McCrary, Tim Poole, Dennis McCrary, David Bradford, Buddy Darwin, Tommy Underwood, Mike Thornton, Charles Marsh, Vince Pearson, Bec Sarratt, Rick Henley, Bill McCamy.



ORGANIZATIONS -- Judy Steeley, Brenda Steeley
 FEATURES ----- Betty Sisk, Ann Forrester
 SPORTS EDITOR --- Eddie Akin, Susan Livingston



CLASS EDITORS ----- Kay Chapman, Nita Price
 Pam Jones, Sherry Jones, Carol Culver
 BUSINESS MANAGER ----- Linda Chapman
 ASSISTANT MANAGER ----- Gwen Sheppard

Reminder Staff

Sponsor ----- MRS. ELOISE BROOME
 Assistant Editor ----- JUAN SELBY
 Editor ----- JOYCE SINGER





DIANNA BRANDON - Senior



ANN FORRESTER - Junior



PAM CAMPBELLE - Junior

Wildcat



MRS. VIRGINIA SLOAN - Sponsor



LINDA CHAPMAN - Head

Cheerleaders



NANCY HAMMER - Junior



KAY CHAPMAN - Sophomore



NANCY CAMPBELL - Sophomore
Alternate



Pep Club



PEP CLUB OFFICERS

President	-----	PATSY GAMBLE
Vice-President	-----	PAULETTE JAMES
Secretary	-----	NANCY LYNCH
Treasurer	-----	PORKY HOLDER
Club Reporter	-----	SUSAN LIVINGSTON
Sponsor	-----	MRS. SLOAN



Vince Frazier

MEMBERS - Kermit Bolton, Billy Nichols, Kay Chapman, Nancy Campbell, Dianna Brandon, Linda Chapman, Nancy Hammer, Ann Forrester, Robert Hester, Tommy Perkins, Docky Campbell, Ferrell Gass, Tommy Brandon, Hank Frazier, Larry White, Kenneth Higginbotham, Eddie Akin, Marvin Phillips, Charles Wilson, Brad Bradford, Paul Stevenson, Bill White, Keith Johnson, Mike Linville, Kenneth Matthews, Larry Proctor, Ray Simmons, Fred Holder, Eddie Collins, Brad Yates.

"S" Club

OFFICERS OF "S" CLUB

President ----- TOMMY PERKINS
 Vice-President ----- BILLY NICHOLS
 Treasurer ----- ROBERT HESTER
 Secretary ----- KERMIT BOLTON
 Sponsors ----- COACH HASS,
 COACH BOBO, COACH HAMBRICK, COACH
 CARTER, and COACH HAWKINS.



Spe
 Sarah Air Bankston,
 Sponsor



Vince Pearson, Mike Thornton, John Neeley, Kert Reedstrom, Linda Bankston, Sarah Airheart, Nancy Lynch, Hank Frazier, Mrs. Stevenson, Larry White, George Parks, Eddie Akin



Special Events

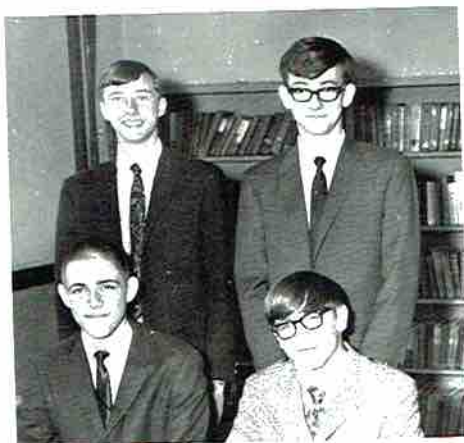
Sarah Airheart, Nancy Lynch, Linda Bankston, and Mrs. Stevenson - Sponsor

Debate Team



First Team

George Parks, Hank Frazier, Eddie Akin, Larry White



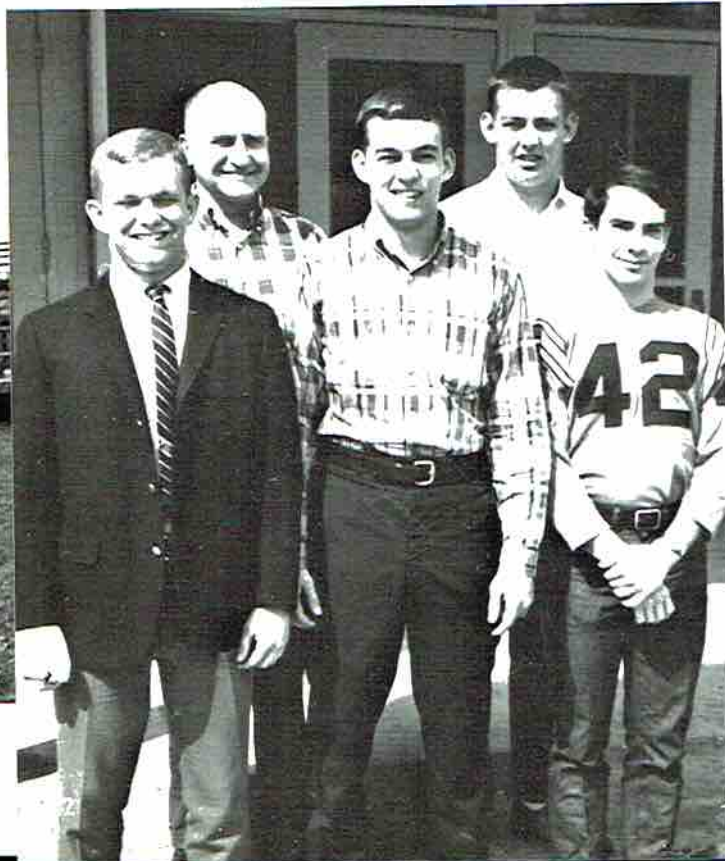
Second Team

Vince Pearson, Kert Reedstrom, John Neeley, Mike Thornton



FIRST ROW: Brad Bradford, Tommy Perkins, Eddie Akin, Paul Steveson, Coach Hawkins
 SECOND ROW: Paul Patchin, Keith Johnson, Grady Jacobs, Larry White, Durwood Hodges
 THIRD ROW: Ray Simmons, Tommy Brandon, John Williams, David Presley, Hank Hodges

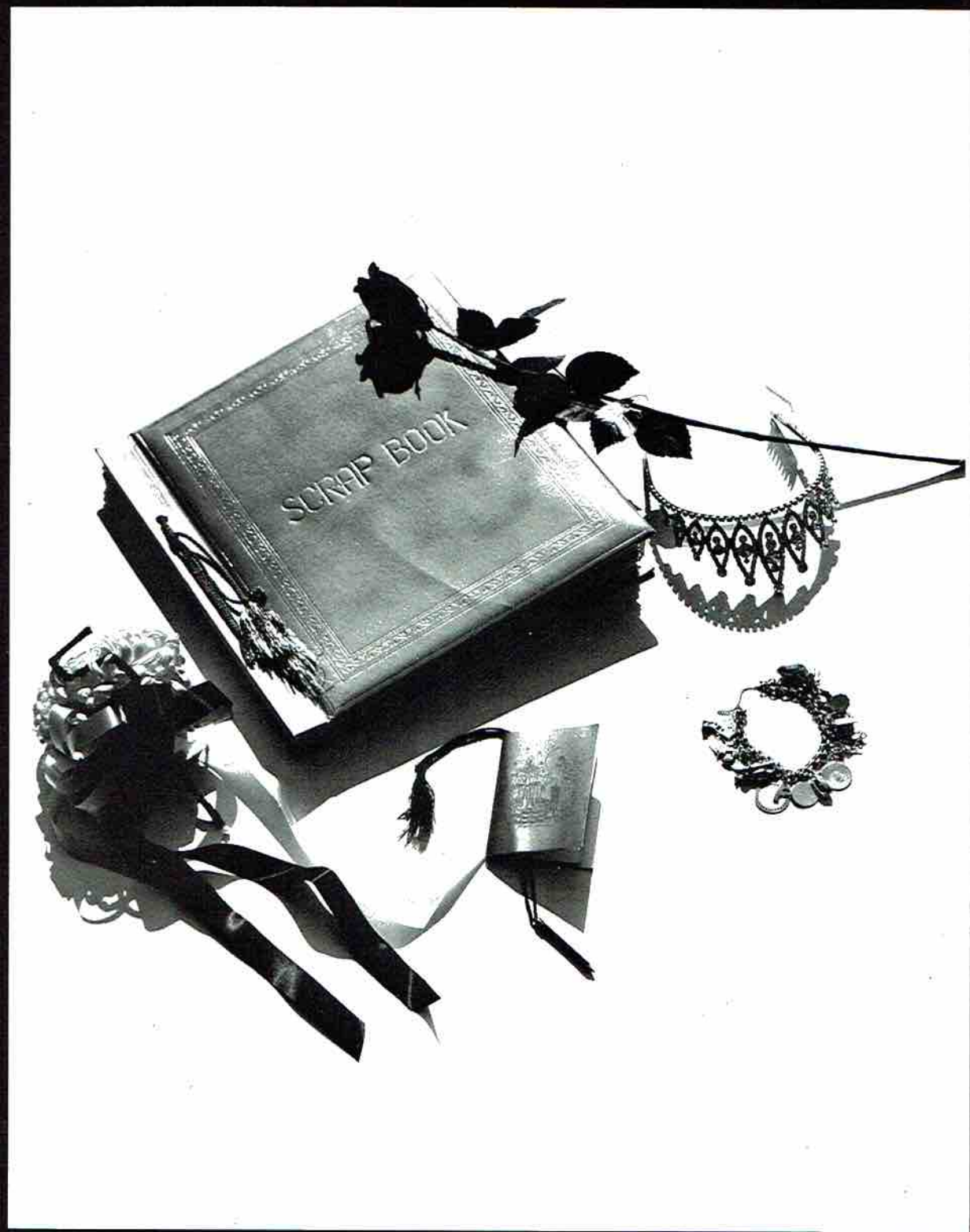
Fellowship of Christian Athletes



OFFICERS:

President ----- TOMMY PERKINS
 Vice-president ----- PAUL STEVESON
 Secretary ----- EDDIE AKIN
 Treasurer ----- BRAD BRADFORD
 Sponsor ----- COACH HAWKINS

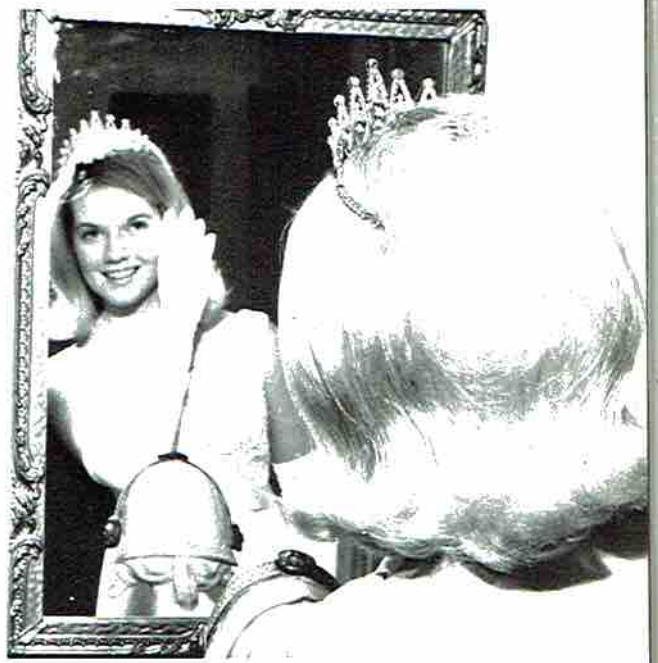
A World of Charm



Features



Miss S.H.S. and Her Court



1st runner-up - VIRGINIA GARDNER, Junior
2nd runner-up - PAM CAMPBELLE, Junior
3rd runner-up - HADEN HODGES, Senior
4th runner-up - LINDA BANKSTON, Junior

Homecoming Queen of 1966-67



Miss Linda Chapman

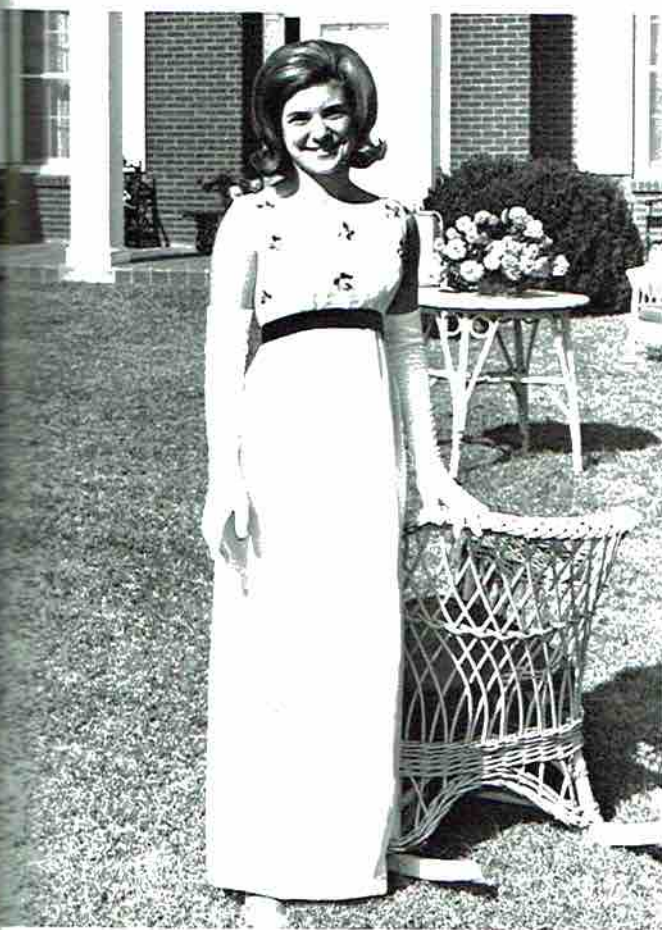
*Homecoming
Attendants*



KAY CHAPMAN, 10th grade



NANCY LYNCH, 12th grade



ANN FORRESTER, 11th grade

Homecoming Floats



Sophomore float, theme; Bag the Bulldogs.



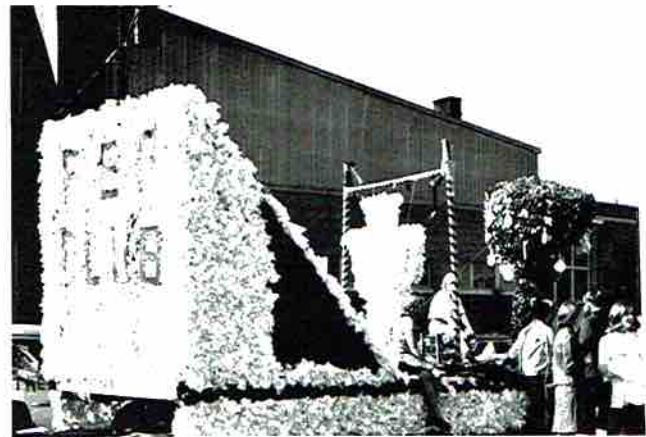
Junior float, Theme; Brand the Bulldogs



Senior float, Theme; Defeat the Bulldogs, tied for 2nd place



Library club takes 1st place, Theme; Scentimental Me



Pep club, ties for 2nd, Theme; Lick the Bulldogs



The Student Council honors Homecoming Queen and her court.

Band Sweetheart

BETTY SISK and GEORGE PARKS



*Senior
Who's Who*



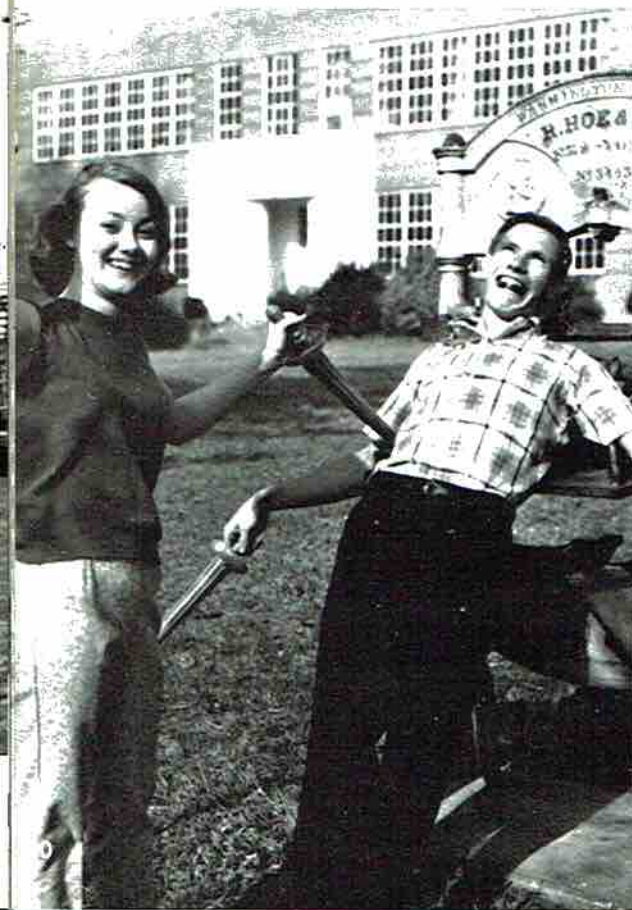
Most Popular

BETTY SISK and LARRY BROWN



Best All Around

LINDA ROBERTS and JERRY CHRISMAN



Friendliest

NANCY LYNCH and BARRY ATKINS



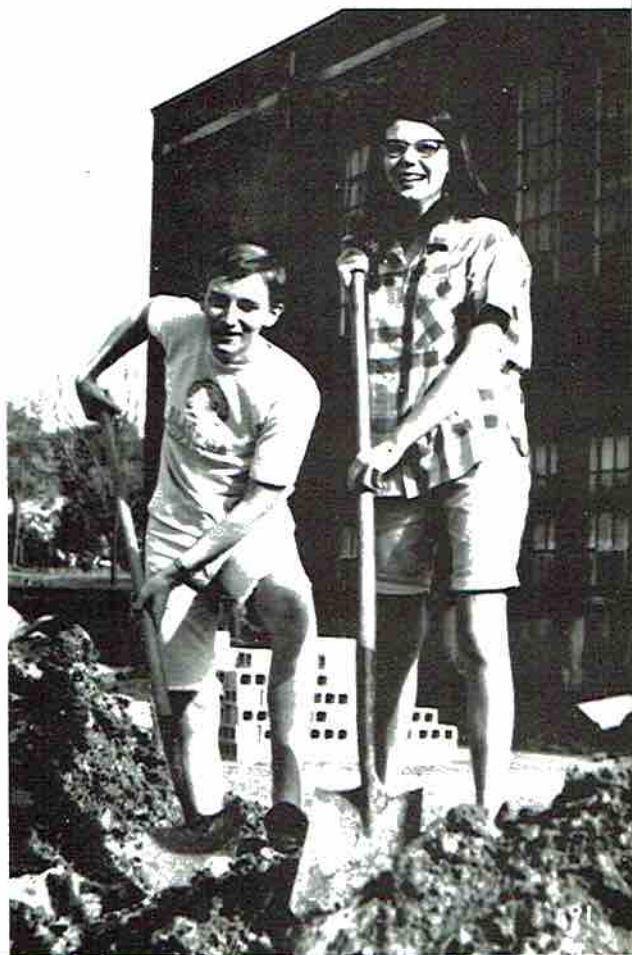
Most Studious

LINDA BASS and LARRY WHITE



Most Dependable

PATRICIA SIMMONS and EDDIE AKIN



Most Likely to Succeed

LINDA PAGE and GEORGE PARKS



Most Talented
CAROL KELLER and ALVIS WALES

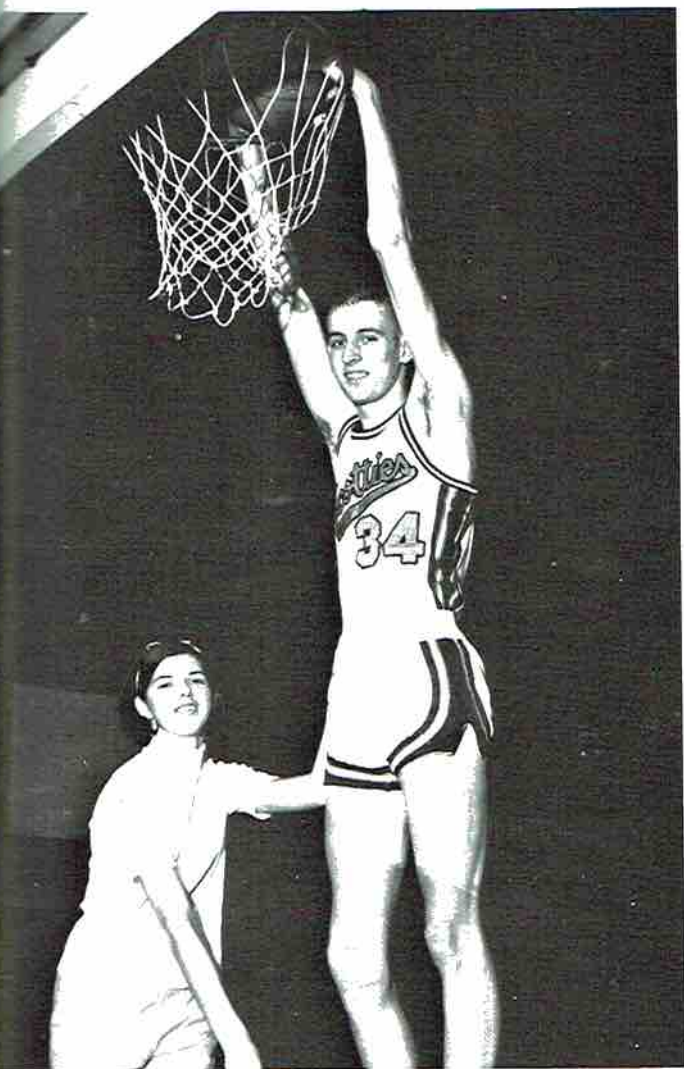


Prettiest and Handsomest
LINDA CHAPMAN and ROBERT HESTER

Neatest

KAY WYNN and HANK FRAZIER





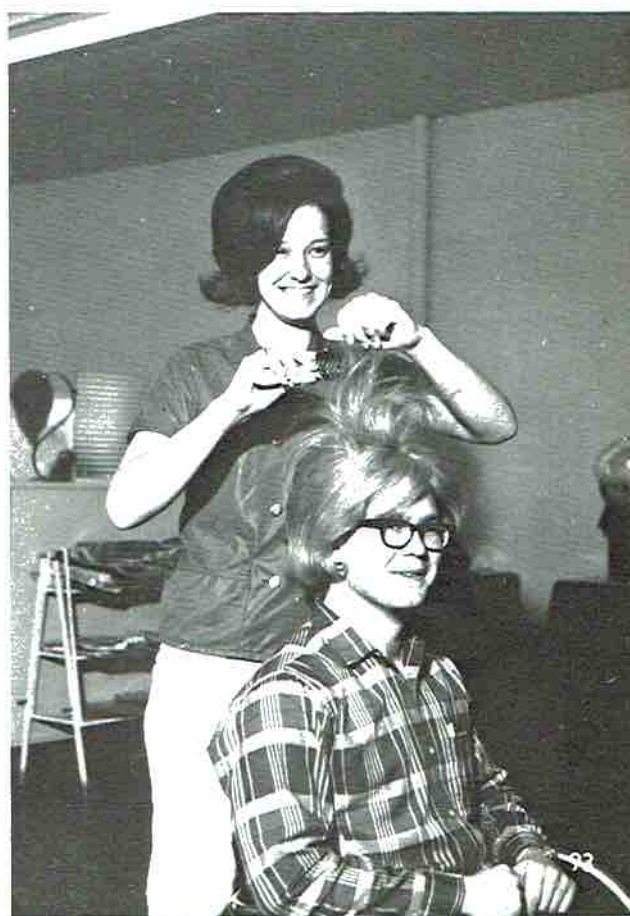
Most Athletic

PATRICIA CHANDLER and BOBBY TALLEY



Most Considerate

DIANA BRANDON and TOMMY PERKINS

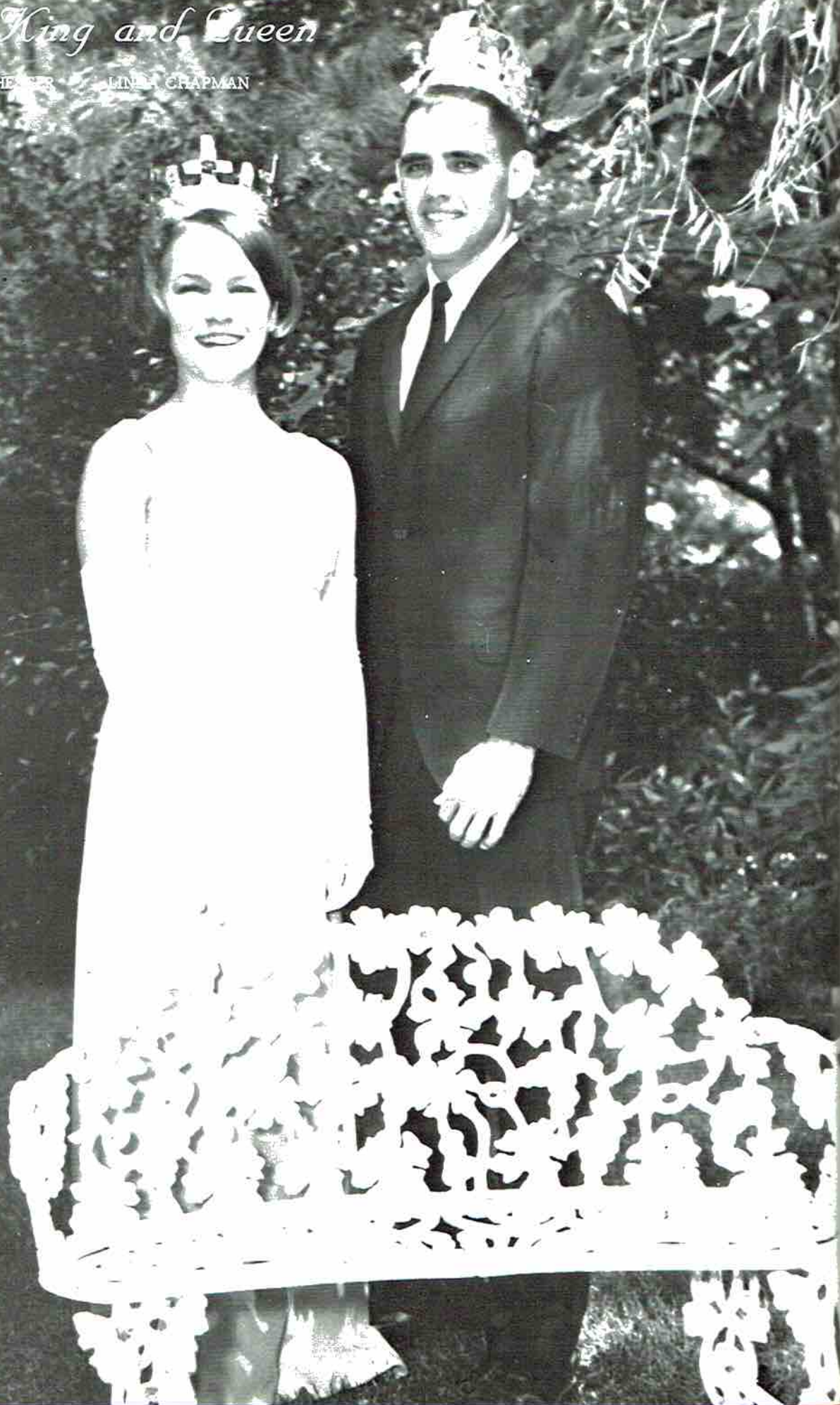


Most Original

JOYCE SINGER and KERMIT BOLTON

Prom King and Queen

ROBERT HEYER LINDA CHAPMAN



Miss FFA and Her Attendants



ANN FORRESTER



KAY CHAPMAN



NANCY JO HAMMER

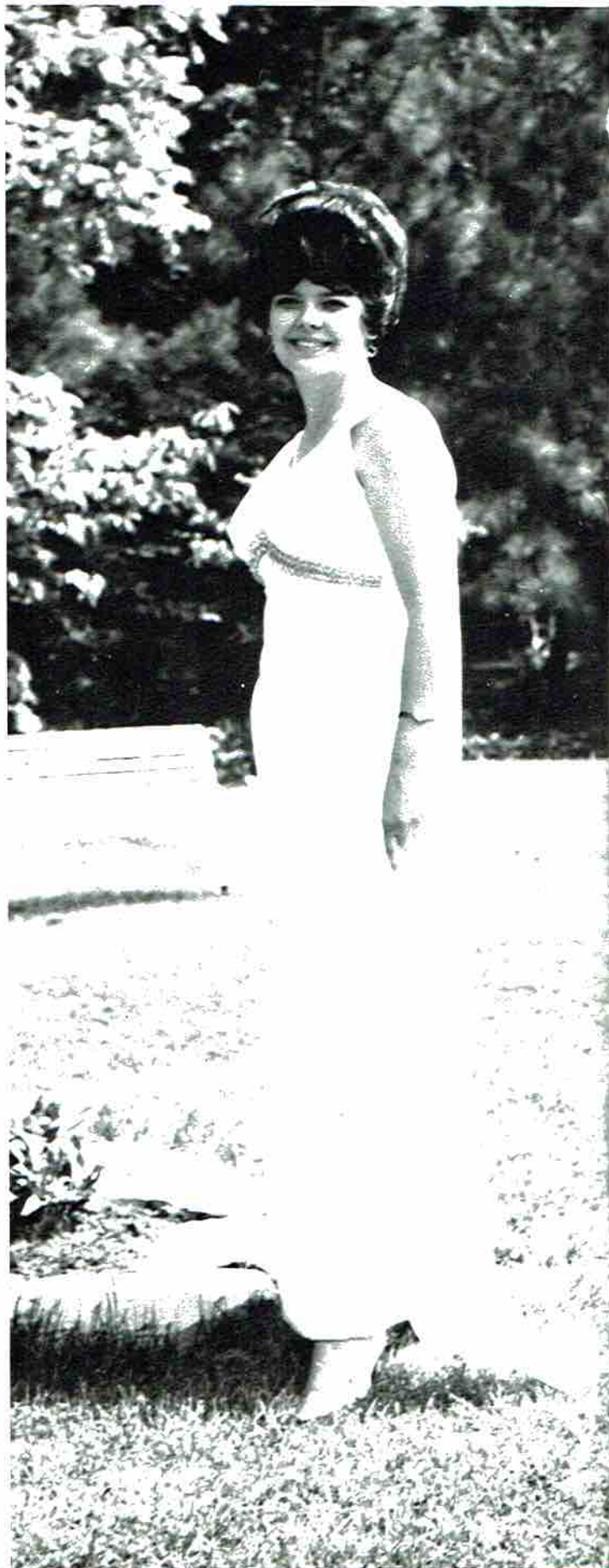
Mr. & Miss D.O.

BILLY WRIGHT and LINDA SEABOLT



Miss D.E.

PHYLLIS CHRISTA



Class Favorites



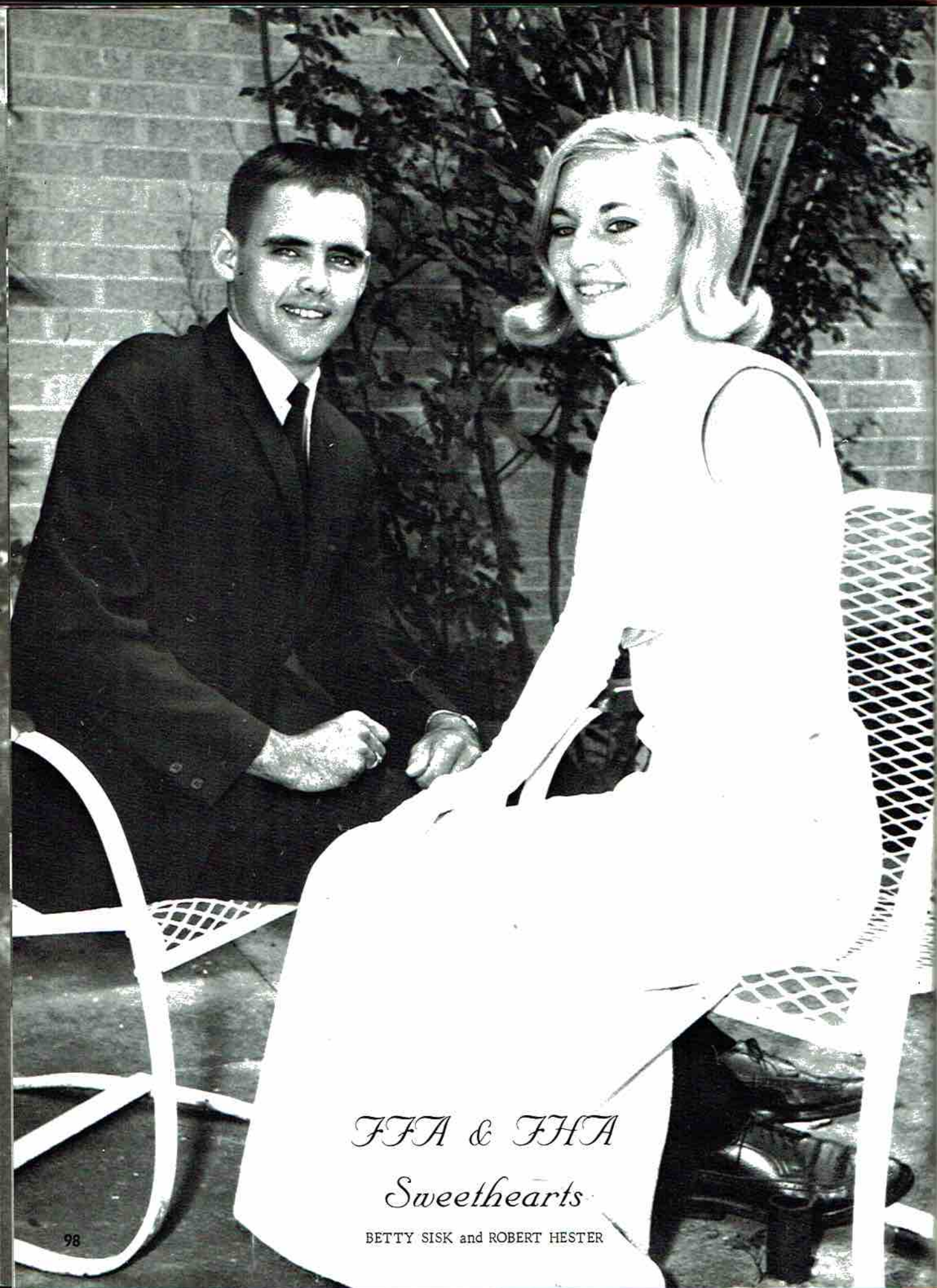
SOPHOMORE - Kay Chapman
Mike Thorton



JUNIOR - Nancy Hammer
Brad Bradford



SENIOR - Nancy Lynch
Jerry Chrisman



FFA & FHA
Sweethearts

BETTY SISK and ROBERT HESTER



GO



McC.
BETT
HOM

Honors



GOOD CITIZENSHIP GIRL - Patricia Simmons



NATIONAL MERIT FINALISTS
Alvis Wales, George Parks, Linda Page



CLASS PRESIDENTS
Hank Frazier, Mike Thornton, Brad Bradford



McCALLS TEEN FASHION BOARD MEMBER
BETTY CROCKER HOMEMAKER of TOMORROW
HOME ECONOMICS AWARD
Anita McNelley



AMERICAN HISTORY AWARD
Suzanne Sloan



DEKALB AGRICULTURE AWARD Larry Dawson



MUSIC AWARD Sharon Boozer



Joyce Singer - EDITOR, Reminder
Linda Chapman - EDITOR, Wildcat
BUSINESS MANAGER, Reminder



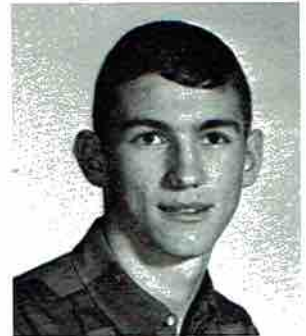
FHA STATE DEGREE - Edna Marsh, Edna Batey,
Anita McNelley



Suzanne Sloan
GIRLS' STATE



Bill White



Mike Linville



Ray Simmons



Brad Bradford

BOYS' STATE

A World of Sportsmanship



Scotties '66-'67



Elliott, Dolberry, Hester, Long, Simmons, Brown, Talley, Linville, Nichols, Chrisman, Bramblett.

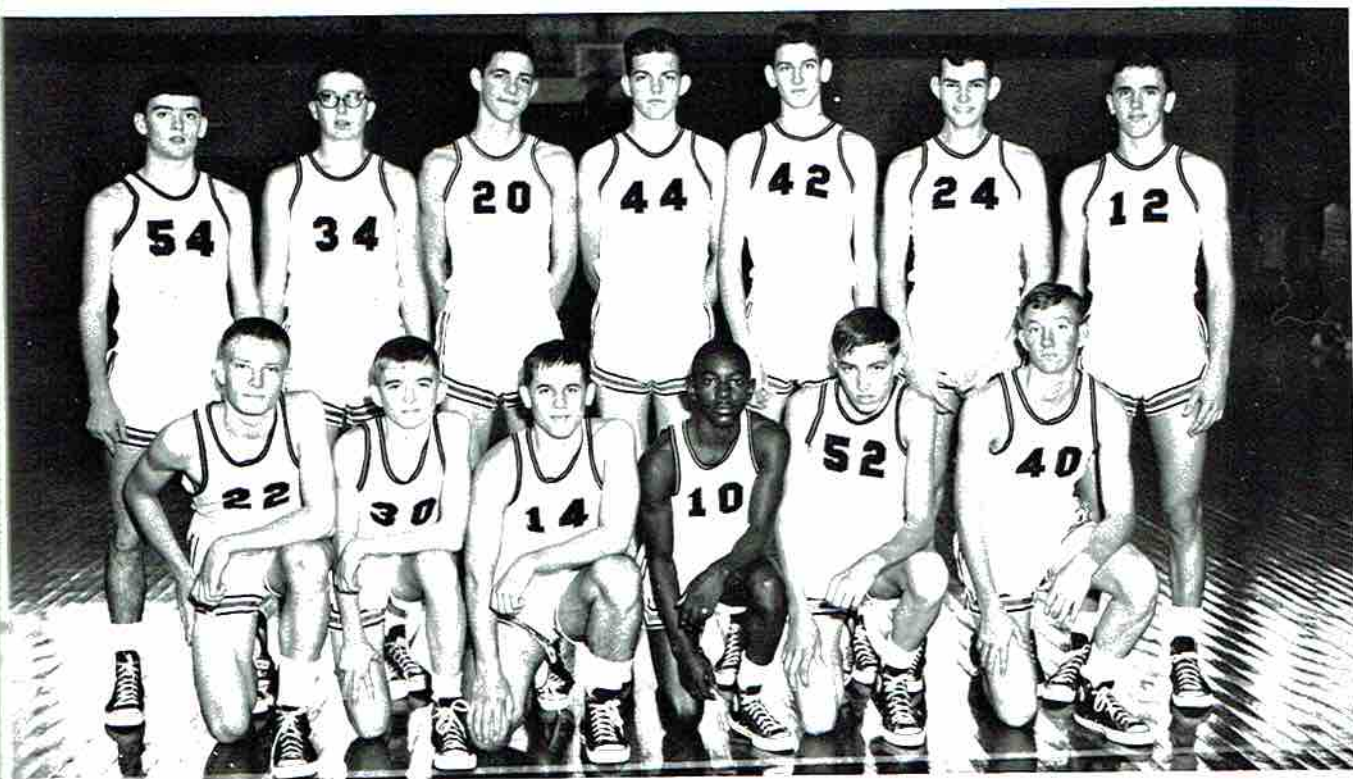


COACH CARTER
Head Coach

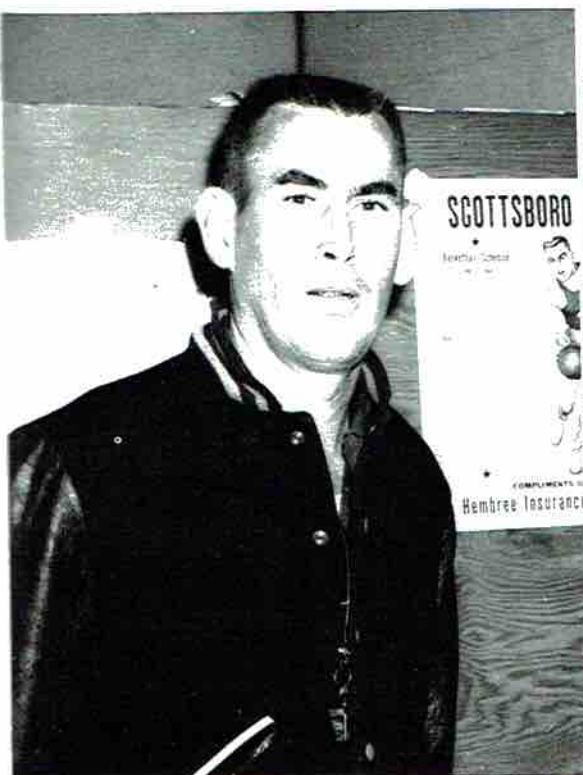
SCHEDULE

Scottsboro	89	New Hope	63
Scottsboro	65	Huntsville	69
Scottsboro	55	Pisgah	40
Scottsboro	48	Fort Payne	46
Scottsboro	98	Guntersville	51
Scottsboro	92	Emma Sansom	59
Scottsboro	81	Arab	49
Scottsboro	67	Curry	74
Scottsboro	89	Berry	66
Scottsboro	63	Sylvania	51
Scottsboro	114	West Point	59
Scottsboro	87	Bradshaw	64
Scottsboro	73	Woodlawn	72
Scottsboro	92	Section	73
Scottsboro	64	Huntsville	69
Scottsboro	44	Arab	14
Scottsboro	72	Pisgah	53
Scottsboro	102	Emma Sansom	62
Scottsboro	95	Woodville	42
Scottsboro	82	Coffee	91
Scottsboro	74	Deshler	72
Scottsboro	97	Fort Payne	78
Scottsboro	68	Section	88
Scottsboro	80	T. M. Rogers	83
Scottsboro	107	New Hope	63
Scottsboro	100	Sylvania	69

"B" Team



White, Hall, Pearson, Edmonds, Griggs, Webb, Allen, Hess, Downey, Crumbley, Hill, Mitchell, Webb.



COACH SAM HAMBRICK



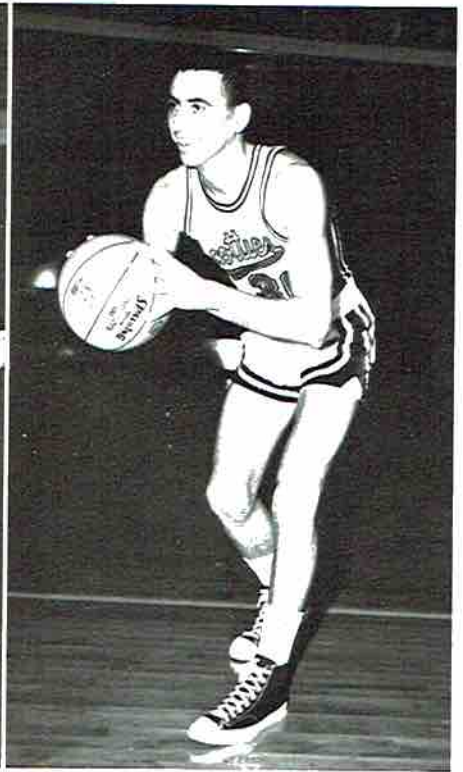
"O.K." Where is the school spirit?



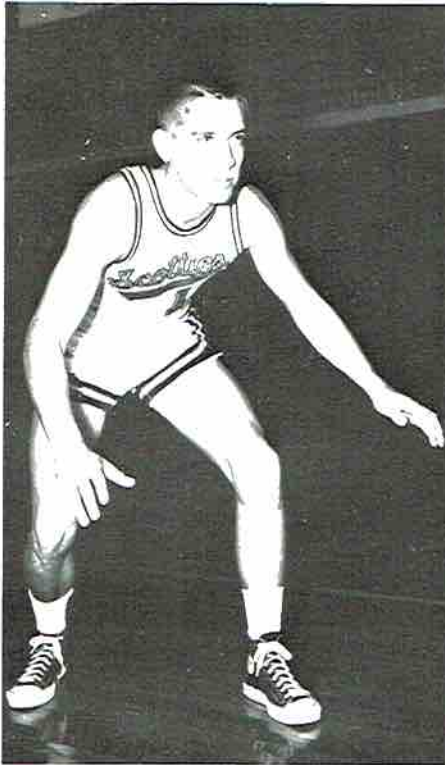
BOBBY TALLEY
Guard and Center



LARRY BROWN
Forward



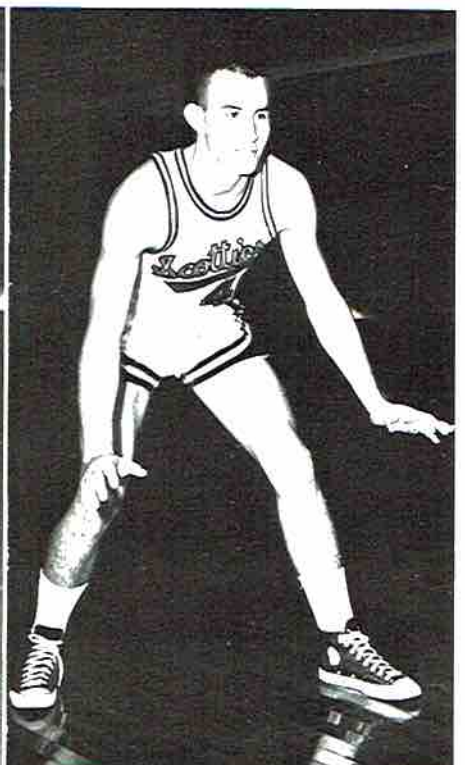
JERRY CHRISMAN
Forward



RONALD DOLBERRY
Forward



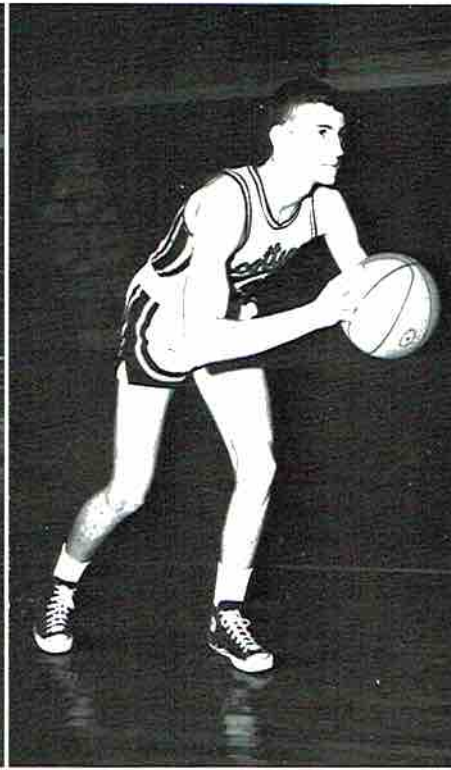
ROBERT HESTER
Guard



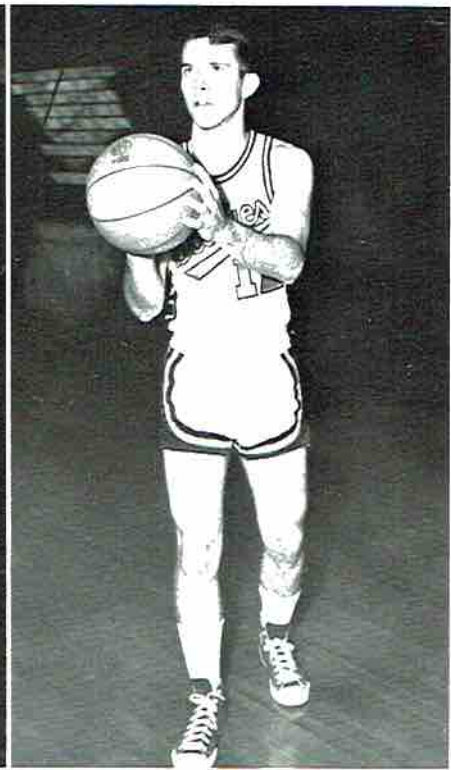
BILLY NICHOLS
Forward



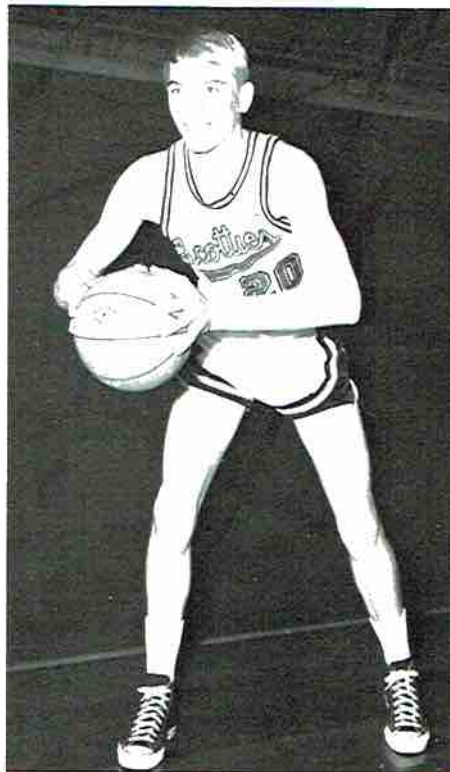
RAY SIMMONS
Center



MIKE LINVILLE
Guard



JIMMY BRAMBLETT
Guard



JIMMY LONG
Forward

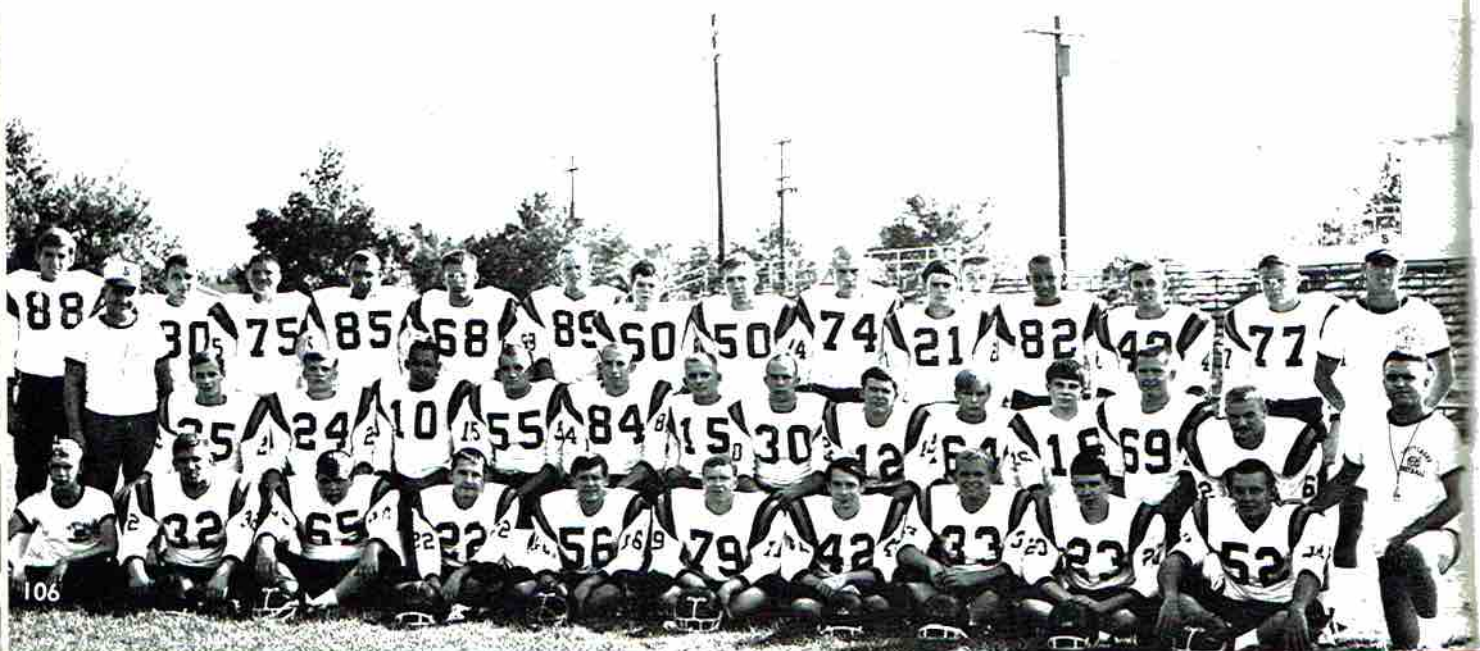


Coaches Haas, Bobo, and Hawkins

SCHEDULE

Scottsboro	28	Hixon	7	Scottsboro	0	Guntersville	7
Scottsboro	0	Huntsville	27	Scottsboro	21	Hanceville	7
Scottsboro	32	Hayleville	0	Scottsboro	0	Cullman	21
Scottsboro	7	Arab	41	Scottsboro	27	Sparkman	14
Scottsboro	14	Fort Payne	18				

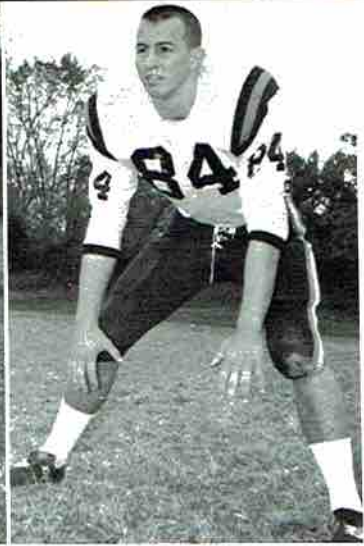
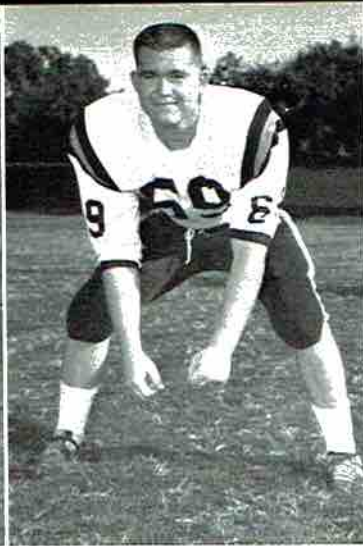
Scottsboro Wildcats



ROBERT
Quarter



DOUG
Half B



ROBERT HESTER
Quarterback

HANK FRAZIER
Half Back

KERMIT BOLTON
Guard

BILLY NICHOLS
Guard

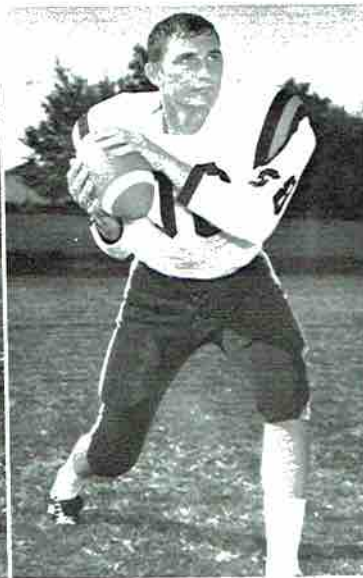


DOUG SINGER
Half Back

EDDIE AKIN
Center

TOMMY PERKINS
Full Back

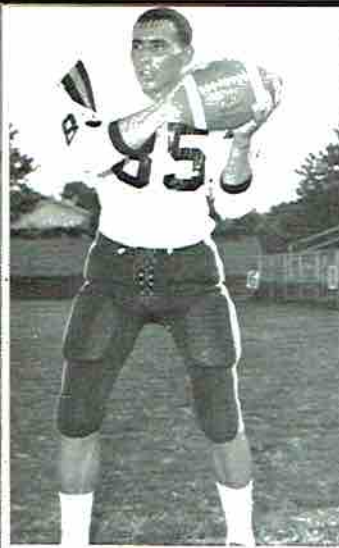
FERREL GASS
Tackle



LARRY PROCTOR
Guard

MARVIN PHILLIPS
End

DOCKY CAMPBELL
Quarterback



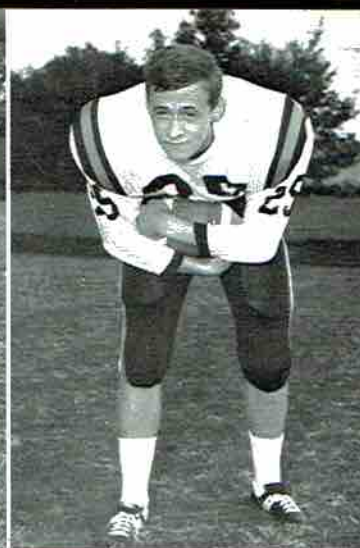
JERRY CHRISMAN
End



RONNIE DOLBERRY
End



CHARLES WILSON
Tackle



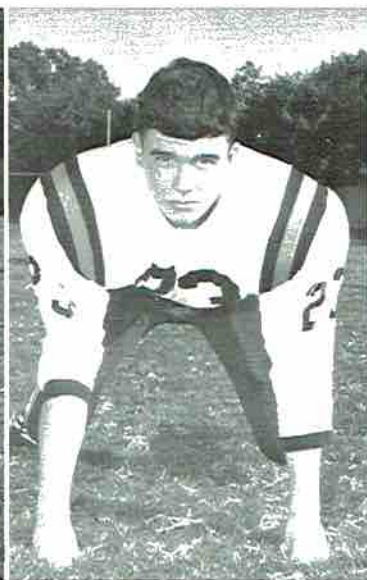
LARRY WHITE
Half Back



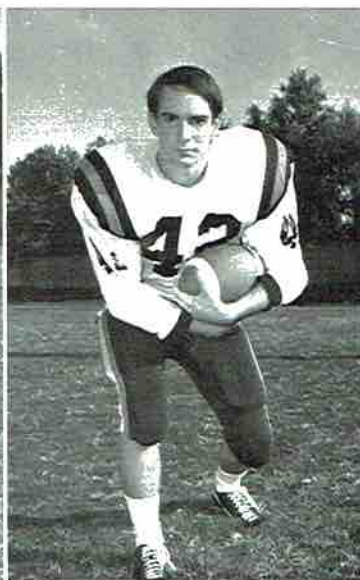
BILL
Hal



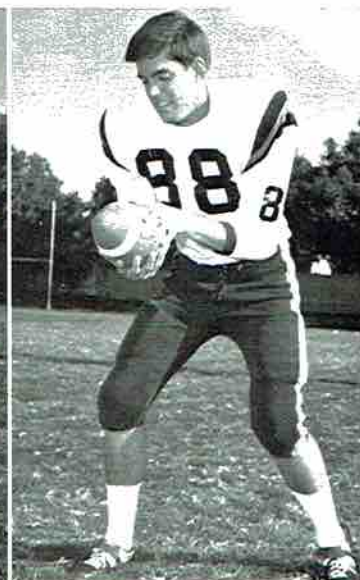
BRAD YATES
Half Back



KEITH JOHNSON
End



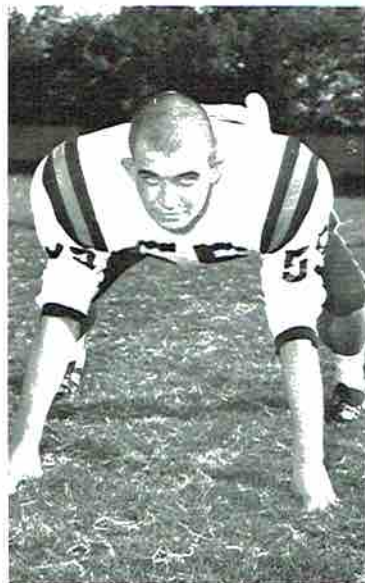
PAUL STEVENSON
Half Back



RAY SIMMONS
End



DAVID
Fullback



FRED HOLDER
Tackle



EDDIE COLLINS
Tackle



BRAD BRADFORD
Fullback



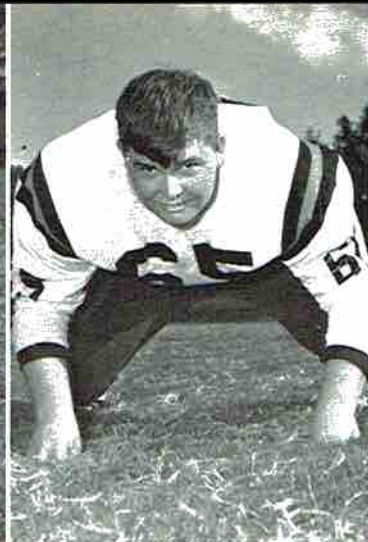
JAMES A.
Tackle



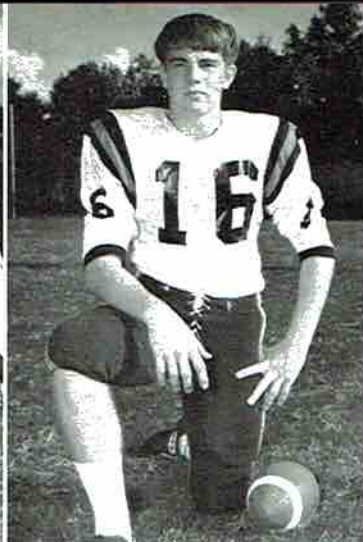
BILL WHITE
Half Back



TOMMY BRANDON
Center



KENNETH MATTHEWS
Guard



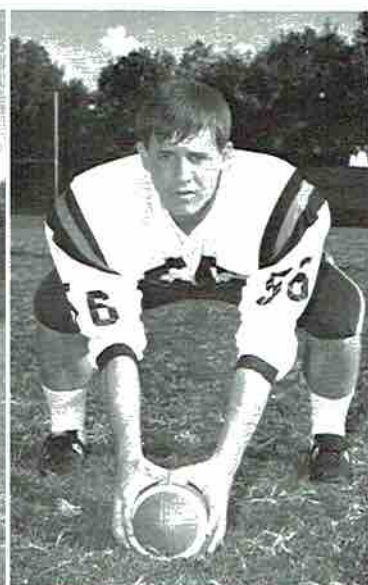
DURWOOD HODGES
Quarterback



DAVID PRESLEY
Fullback



JOHN WILLIAMS
Guard



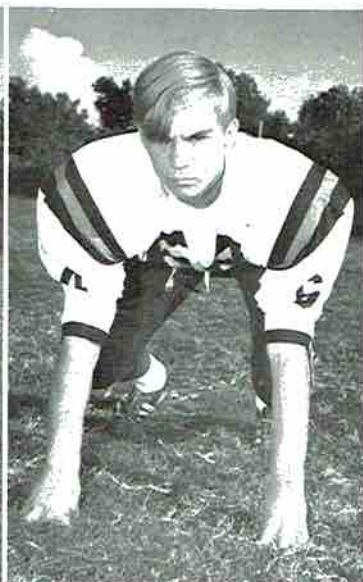
TOMMY CRUMBLEY
Center



JOHNNY BOLTON
Half Back



JAMES ANDERSON
Tackle



JIMMY DAY
Guard



"What's up Doc"?

Alabama "AAA" State Champs



BACK ROW: Nichols, Long, Edmonds, Brown, Talley, Simmons FRONT ROW: Bramblett, Hester, Chrisman, Dolberry, Linville, Griggs, Coach Carter.

TOURNAMENT SCHEDULE

Scottsboro	93	Eufaula	67
Scottsboro	89	Alexandria	74
Scottsboro	67	Fayette	51



COACH CARTER

Voted Tri-State Coach of the Year

ALL TOURNAMENT PLAYERS



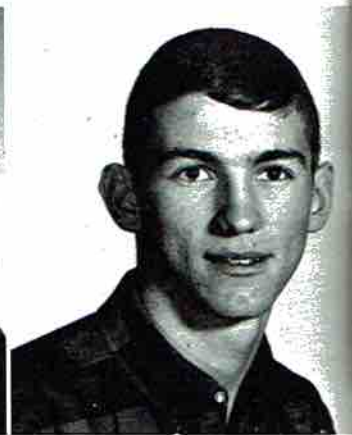
110 LARRY BROWN



BOBBY TALLEY



JERRY CHRISMAN



MIKE LINVILLE



All for Scotties raise your hand



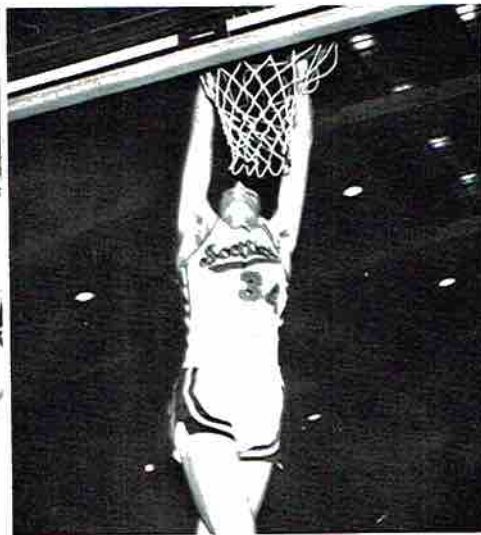
"Watch those elbows!"



Hey, Billy, He's on our side too.



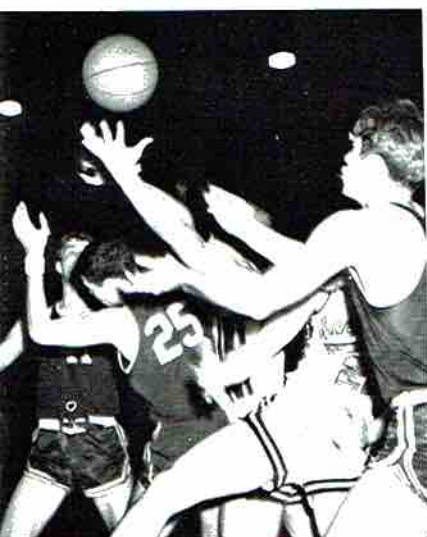
Get it Super Chris!



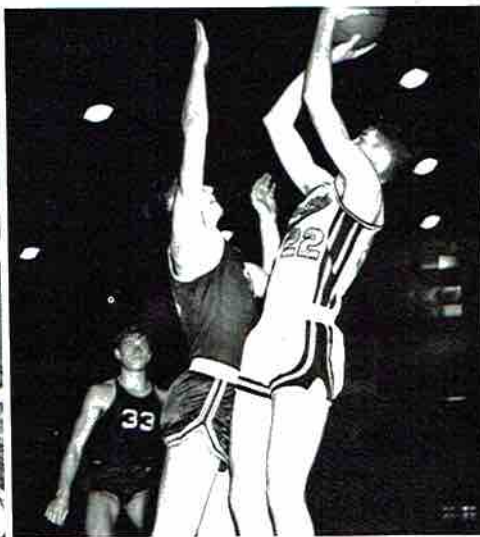
I think I got this one.



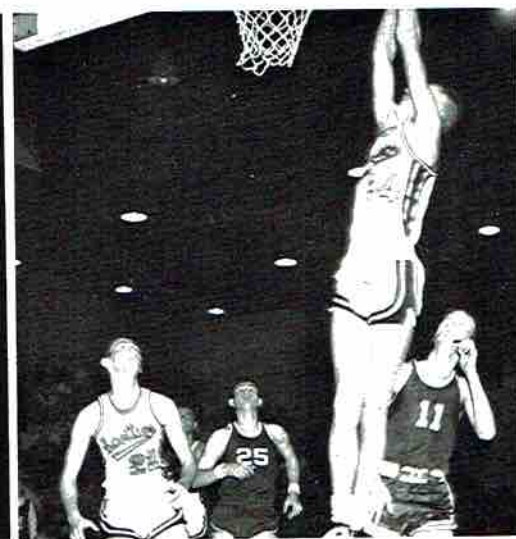
I told you we could do it Coach.



1, 2, 3, GRAB!



If I miss this one I'm through!



How far up is he going?

Sports Snaps



Football Awards

MOST VALUABLE PLAYER ----- Billy Nichols

BEST BACK ----- Robert Hester

BEST LINEMAN ----- Kermit Bolton

SPORTSMANSHIP AWARD ----- Tommy Perkins

BEST RETURNING LINEMAN ---- Tommy Brandon

BEST RETURNING BACK ----- David Presley

BEST RETURNING ALL-AROUND PLAYER -----
Ray Simmons

MOST IMPROVED PLAYER ----- Hank Frazier

BIGGEST LOVER - Fred Holder

Class of 1967

Billy F. Adams
 Doyle Ledbetter
 Rocky Holder
 Jesse Hoge
 Billy B. Webb
 Larry Brown
 Jerry Chiseman
 Cecelia Rogers
 Larry Kirkland
 Diarree Beardox
 Gary Wilson
 Charles Wilson
 Eric Sarraatt
 Judy South
 Linda Giss
 Patricia Simmons
 Linda Bradford
 Roy Cash
 Larry Johnston
 Doris York
 Betty Wormick
 Mabel Stoge
 Betty Eden
 Joey Lewis
 Betty Sisk
 Randy Buckner Pittman
 Sue Talley
 Susan Wilkinson
 Brenda Erith
 Larry Proctor
 Thomas W. Sain C
 Deldia Simmons
 Douglas Linger
 Bobby Talley
 Jess Peart
 Don Meris
 Jack Roland
 Dina Bruner
 Robert Nestor
 Paulette James
 Bill McCassey
 Denny McCassey
 Steve Manning
 R. W. Rodgers

Linda Dudley
 Claude Swett
 Terrill Bass
 David Grumble
 Jimmy Bradford
 Peggy Brooks
 Patricia Chandler
 Billy Couley
 Billy Paul
 Thomas Bradford
 Ronald Balthemy
 Nancy French
 Marsha Bellamy
 Sherry Jones
 Sherry Jones
 Carol Culliver
 Linda Chapman
 Anita M. Wilkey
 Lexell Burr
 Robert Hooks
 Bobby Concher
 James Tidwell
 Larry Danison
 Claude Judge
 Donald Beard
 Denny Jones
 Bobby Harrison
 Sammie Paulk
 Billy Wright
 Joyce Stinger
 Mickey Elliott
 Marlene Phillips
 Ronnie Ledy
 Wanda Miller
 Regina Conider
 Jane Swann
 Nancy Conelison
 Synda Dawson
 Jerry Ledbetter
 Sylvia Mailes
 Audrey Tate
 Ina Mae Tate
 Michael C. Lindbeck
 Paul Lusk
 Charles Keel
 Mils Hamner
 John Hamner
 Nelson Conner
 Johnny Wilson

Kenneth Higginbotham
 Arnold Wheeler
 Paul Weeks
 Joan McQuinn
 Betty Tidwell
 Virginia Green
 Bruce Stewart
 Carol Keller
 Alvis Wales
 Linda Page
 George Parky
 Jimmy Parky
 Hank Frazier
 Billy Nichols
 Eddie Akin
 Dave Warren
 Larry White
 Johnny Wright
 Tommy Phillips
 Glenn Burrows
 Frank Waas
 Hasen Hodges
 Kermit Bolton
 Betty Stillison
 Linda Roberts
 Carl Mitchell
 Billy Pace
 Reginald Poe
 Woody Sanford
 Jerry Webb
 Jimmy Matthews
 Brenda Griffin
 Eric Bookless
 Charles Utth
 Barry Atkins
 Gerald Wininger
 Helen Hastings
 Linda Whinger
 Maudie Lusk
 Linda Sanders
 Bobby Grider
 Delta Ann Merrill
 Phillip Sebring
 Sarah Lehart
 Edna March
 Wayne Smith
 Duke Campbell

TOWN & COUNTRY FURN. CO.

Complete Quality Home Furnishings

GE Appliances Magnavox TV and
Stereos

Ft. Payne Highway
Scottsboro, Alabama

ROUGH AND TUMBLE FURNITURE COMPANY

"Scottsboro's Largest"

Westinghouse

Speed Queen
Washers

Zenith

Simmon's

107 West Laurel St.

Phone 574-2338

Scottsboro, Alabama

SCOTTSBORO BUSINESS MACHINES

Sales * Repair * Rentals

Scottsboro, Ala.

Phone 574-2288

HODGES DRUG AND H & H PHARMACY

YOUR DEPENDABLE DRUGGIST

Scottsboro, Ala.

Phone 574-3535

B & G GAS COMPANY

Distributors of Propane Gas and
Equipment

Phone 574-1030

Scottsboro

LORCH'S DIAMOND SHOP

125 East Laurel Street

Scottsboro, Ala.

Phone 574-4515

**HIWASSEE LAND
COMPANY**

Growing and Buying Pulpwood for

Bowsters Southern Paper Corp.

HAMMER'S

Full of Surprises

and

"Always Something New"

**WROS
RADIO STATION**

1330 KC

Scott Street

Scottsboro, Alabama

**WORD-BOLTON
FUNERAL HOME**

716 S. Broad St.

Phone 574-1066

Scottsboro, Ala.

DARWIN'S

Clothes and Shoes for the
Entire Family.

Phone 574-2667

Scottsboro

FEDERAL LAND BANK

O. M. JOHNSON, manager

Call

574-3139

702 E. Laurel

Scottsboro, Ala.

Call

845-2711

306 Gault

Ft. Payne



CAMPBELL TRACTOR CO.

GMC Trucks

West Willow Street

Phone 574-1234

WORD MOTOR COMPANY INC.

Chevrolet and Oldsmobile

Sales and Service



P. O. Box 480

Scottsboro, Alabama

574-3233

Compliments of

BELLEFONTE LACE CORPORATION

GAY AND WIMBERY INSURANCE AGENCY



202 1/2 South Broad Street

Phone 574-4564

Scottsboro, Alabama

COPELAND TIRE COMPANY

"Car Care Center"

301 Market Street -- Phone 574-3319
Scottsboro, Alabama

B. F. Goodrich Truck Passenger Tires
With Complete Auto Service

B. F. Goodrich Truck Tires
Road Service



SHOOK LAUNDRY & CLEANERS

Phone 574-2288

Scottsboro, Alabama

CRAWFORD CLEANERS

105 E. Appletree Street

Phone 574-3212

Scottsboro, Alabama

J. P. STEVENS AND CO. INC. MAPLES NO. 1

Manufacturers of Rugs and Bath mats

WCRI

LATEST NEWS

815 W. Willow St

574-1050

Scottsboro, Ala.



LEON'S

12¢ Hamburgers

101 W. Willow Street

Scottsboro, Ala.

574-1165

KELLER & TALLEY

TELEVISION AND RADIO SERVICE

WE'RE KNOWN FOR
TV KNOW-HOW



PETE SELBY FURNITURE COMPANY AND PETE'S MOBILE HOMES

Norge Appliances
DuMont Television

"You never get beat when you
trade with Pete!"

Larkinsville, Alabama

BROWN & BERGMAN

FRECK'S CHICKEN HOUSE

Home of "Freck's Special Dressing"
(2 1/2 miles from Five Points on Fort
Payne Highway No. 35)

Try our Barbecue!

Phone 574-2868

JOHNSON'S SUPER MARKET

WALES JEWELRY CO.

Gifts that last, serving
Scottsboro and Jackson
County for over 30 Years.

No extra Charge for credit

BETTER GROCERIES



A. J. LINDSEY

THE SENTINEL AGE

FRED BUCKHEIT, Editor and
Publisher

Published
Sunday and Thursday

Scottsboro, Ala.

574-1020

JIM PITT'S FLOWERS



Flowers

For every occasion

ELIZABETH SHOE BOX

Cancellation shoes

Word Arcade

**HARRIS-JONES
DODGE, INC.**

637 Willow St
Scottsboro, Ala.

WOODEN JONES,
Vice President

DODGE



Office 574-1455

BETTER GROCERIES



at

**72 EAST
FOOD MARKET**

"Where shopping is a pleasure"

Fresh Produce

Money Saving Prices

Plain and Fancy Groceries

Open 7:30 a.m. to 8:30 p.m. 6 days



WILLIAM T. THOMAS, R. Ph.

Quality

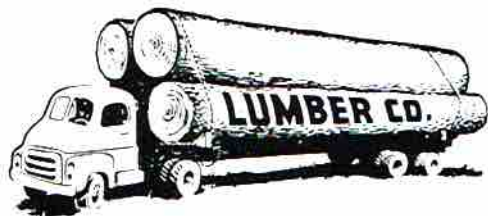
Service

Howland Boulevard

574-3115

Scottsboro, Alabama

**PATRICK LUMBER
COMPANY**



615 E. Willow St

574-2211

**McCAMY
DRUGS**

248 S. Broad Street

Scottsboro, Ala.

574-1672

**RITZ
&
TAWASENTHA DRIVE IN
THEATRES**

**OLD HICKORY
SMOKE HOUSE**

122 E. Peachtree Street

574-3202

Scottsboro, Alabama

GIST STUDIO

"We appreciate your letting
us make your Senior
Portraits."

602 S. Broad St.

574-3659

**WORD
LUMBER CO.**

Your ONE*STOP Building
Material DEALER

Established 1892

574-3858

Scottsboro

Rainsville

Ft. Payne

**DAVIS DRIVE-IN
CLEANERS**

KENNAMER'S MILL ENDS STORE

"Your Complete One Stop Sewing Center"

Phone 574-3157

Scottsboro, Alabama

W. H. PAYNE DRUG. CO.



Phone 574-2140

Scottsboro, Alabama

HEMBREE INSURANCE AGENCY



Phone 574-1279

Scottsboro, Alabama

PARK'S

Sooner or Later your Favorite
Store

MR. and MRS. ALBERT PARKS

101 South Borad St
574-1162
Scottsboro, Alabama



SEBRING TRUCK AND TRACTOR CO.

LAWRENCE SEBRING, Owner

134 East Peachtree Street
Scottsboro, Alabama
Phone: 574-3031

You Don't Have To Start At The Top . . .



but
it
helps!

If you're thinking about career opportunity, you might think about Burlington, the world's leading manufacturer and merchandiser of textiles for every purpose. Why not start at the top of the textile ladder? Why not investigate a "world of opportunity" at:

SCOTTSBORO HOSIERY CO.
a unit of

Burlington INDUSTRIES, INC. 
EXECUTIVE OFFICES, GREENSBORO, N. C.

RED SHARP, INC.

EXCAVATING, GRAVEL and CONCRETE

P. O. Box 357

Scottsboro, Alabama 35768

It Cost Less at--

STERCHI'S

THE SOUTH'S LARGEST HOME
FURNISHERS

CARL COOK BODY SHOP

BODY AND FENDER REPAIR

104 Cedar Hill Drive Ph. 574-4010

DOLBERRY'S

RADIO TV SERVICE

Admiral Television
Sales and Service

Phone: 574-3001

112 East Peach Tree Street
Scottsboro, Alabama

BENHAM UNDERWEAR MILLS

207 W. Railroad Phone 574-1777

Scottsboro, Alabama

BUICK

SAM HODGES MOTORS

514 West Willow Street

Phone 574-2261

P. O. Box 788

Scottsboro, Alabama 35768

PROC'S BURGERS

2 Locations

Guntersville Hwy

574-9208

Downtown E. Side of Square

574-2193

Warning -- Habit Forming



HARBIN MOTOR COMPANY



Phone 574-3690

Scottsboro, Alabama

HI-JACKSON WHOLESALE, INC.

Wholesale Plumbing and
Electrical Supplies

119 South Market St.

Scottsboro, Alabama

DAIRY QUEEN

574-3171

Hwy 72

Office Supplies

Rubber Stamps

THE PRINTING MART

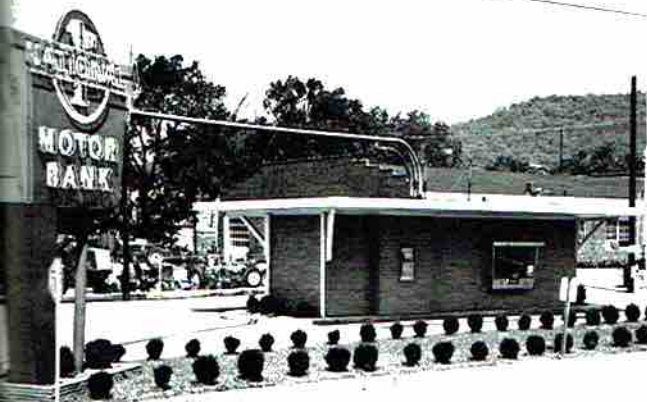
Commercial Printing

109 N. Market St.
Scottsboro, Alabama

Phone 574-3755



... GO-WILDCATS-GO ...



206 So. Broad St.
574-4313



Corner of Caldwell and West Laurel
574-2500

WILDCATS! We Welcome Your Business!
. . . THE BEST IN BANKING COSTS NO MORE! . . .

THE FRIENDLY FIRST NATIONAL

of Scottsboro

Member

Fed. Res. System and Fed. Dep. Ins. Corp.





CAMPBELL OIL CO., INC.

Pure Oil Products

Scottsboro, Alabama

Phone 574-1310

C & H COMPANY

126 E. Peachtree St.
Scottsboro, Ala.

Dresses by - Nannette and Cinderella
Shirts - Sport and Dress by Campus
Work Clothes - by Dickie

We Give S&H Green Stamps

S
&
H

G
R
E
E
N

S
T
A
M
P
S



S
&
H

G
R
E
E
N

S
T
A
M
P
S

Double S&H Green Stamps Wednesday's



BOTTLED UNDER AUTHORITY OF THE COCA-COLA COMPANY BY SCOTTSBORO COCA-COLA BOTTLING CO.

Gant
Farah
Gold Cup Socks

Phone 574-1103

McGregor
Canterbury Belts
Cole Haan

ADAMS STORE

Where you Find the Usual and Unusual

205 Market St
Scottsboro, Ala.

W. S. ADAMS
BROOKS H. BROWN

**COLONIAL BAKING
COMPANY**

of

Chattanooga

**STANDARD SCHOOL
SERVICE, INC.**

1945 Hoover Court

Birmingham, Alabama

**DYESS & HIBBETT
SPORTING GOODS**

2124 Memorial Parkway

Huntsville, Alabama

Compliments of

FLOWER HUT

**BEE LINE
EXPRESS**

Scottsboro, Alabama

Compliments of

**TOM'S CAFE
AND
SISK GROCERY**

MEADOW GOLD DAIRIES

"Jackson County Milk for Jackson County People"



Phone 574-1201

Scottsboro, Alabama

ONCRETE

lorado

nts of

OLIVER, O'DWYER NTRACTORS

EERS

labama



WESTERN CONCRETE

Denver, Colorado

Compliments of

REYNOLDS, LING, OLIVER, O'DWYER ELECTRICAL CONTRACTORS & ENGINEERS

Scottsboro, Alabama





GO! GO! GO!

TO THE

LADIES AND CHILDREN SHOPPE

FOR

YOUR WINTER CLOTHES



KENAMER'S

Compliments of

W. L. HALSEY GROCERY

Compliments

A & P TEA CO.

Main Office
P. O. Box 276
Birmingham 1, Ala.

Compliments of



Dallas, Texas



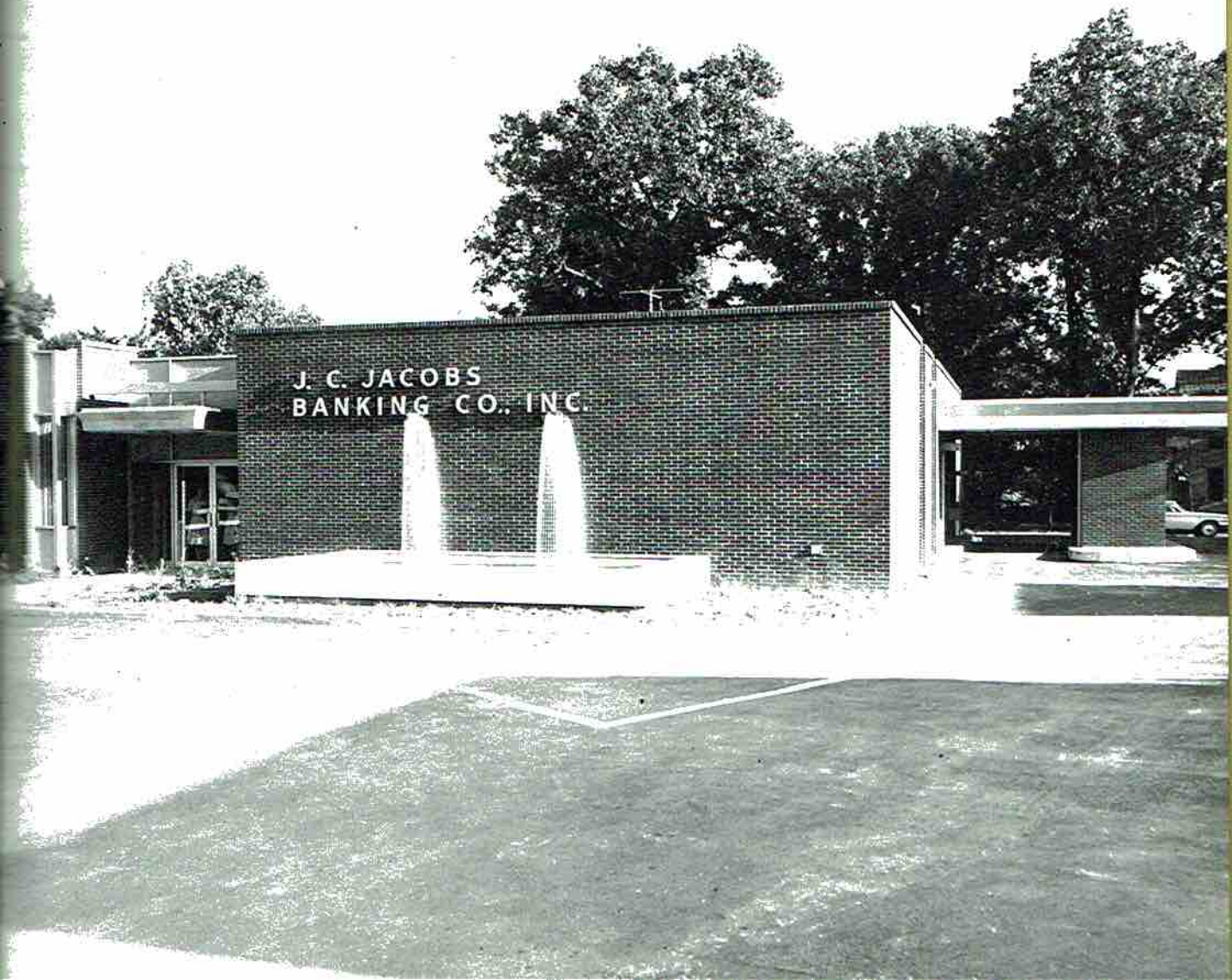
TO SUIT YOUR
TASTE



VARIETY BAKE SHOP

Phone 574-2424

Cookies and cakes to suit your taste!



Best Wishes From REVERE in Scottsboro

A good neighbor, a good place to work

Joining with forward-looking Alabamans to make our
state and neighborhood a better place in which to live.



REVERE COPPER AND BRASS INCORPORATED

FIRST AND FINEST IN COPPER AND BRASS; MINE-TO-FINISHED PRODUCT IN ALUM NUM.