

SCOTTSBORO HS

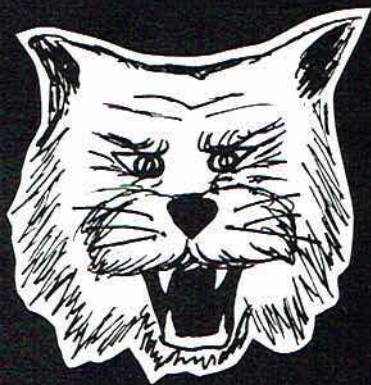


T 12303



# The Reminder 1966





*The Reminder*  
*Scottsboro High School*  
*Scottsboro, Alabama*  
*1966*

Editor - - - - - SUE ELLEN HARRIS

Associate Editor - - - - - NANCY COLLINS

Business Manager - - - - - WANDA KENAMER

Advisor - - - - - MRS. ELOISE BROOME

**Scottsboro High School Library**





MRS. FAYE SANDERS

*We Dedicate Our Yearbook to a Woman Who  
Is Herself Dedicated*  
Scottsboro High School Library



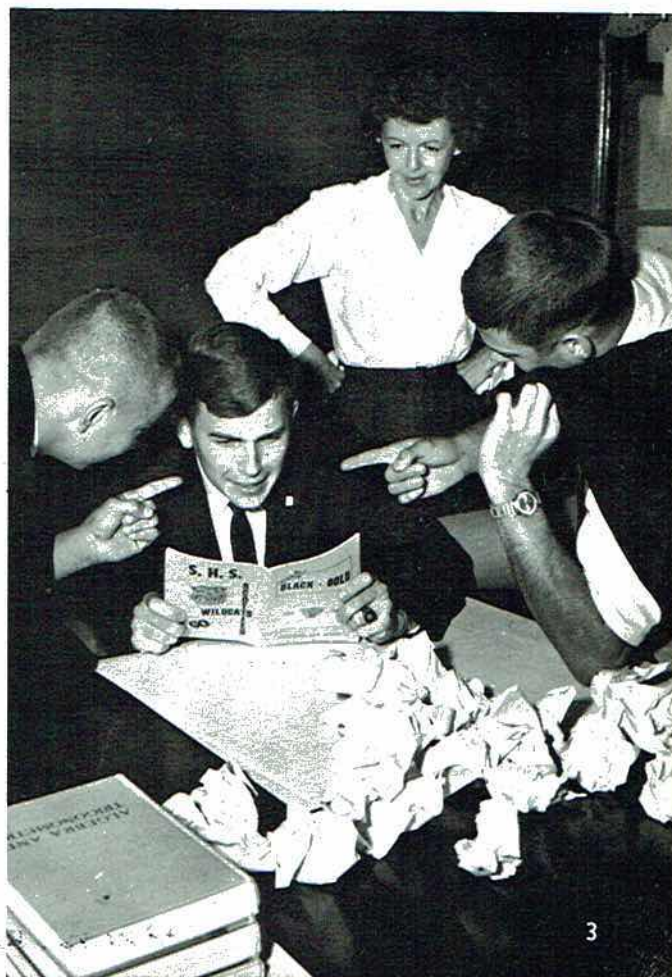


## *Dedication*

Mrs. Sanders, you have been a true friend to us. The countless hours spent as Student Council sponsor and the innumerable times you have gone beyond the call of duty for students have earned for you the trust and admiration of all who have had the good fortune to know you. Your trademarks, a ready smile and a quick step, have endeared you to us all.

You have taken away our anger and substituted understanding; you have made us look within ourselves and laugh.

It is to you, Mrs. Sanders, that we proudly dedicate the 1966 Reminder and say "thanks" for your hard work and patience.









In a tumultuous world filled with uncertainty, frustration, and violence, we at SHS have found there is still time for laughter. Here, in our own corner of the world, we know the value of a smile, the joy of . . . .

## *The Magic of Laughter*





*Laughter Assumes Many Forms*





## *We Find Laughter*



- . . . in the tenderness of a shared moment,
- . . . in the joy of a winner,
- . . . in the warmth of companionship,
- . . . in the crazy things we do.





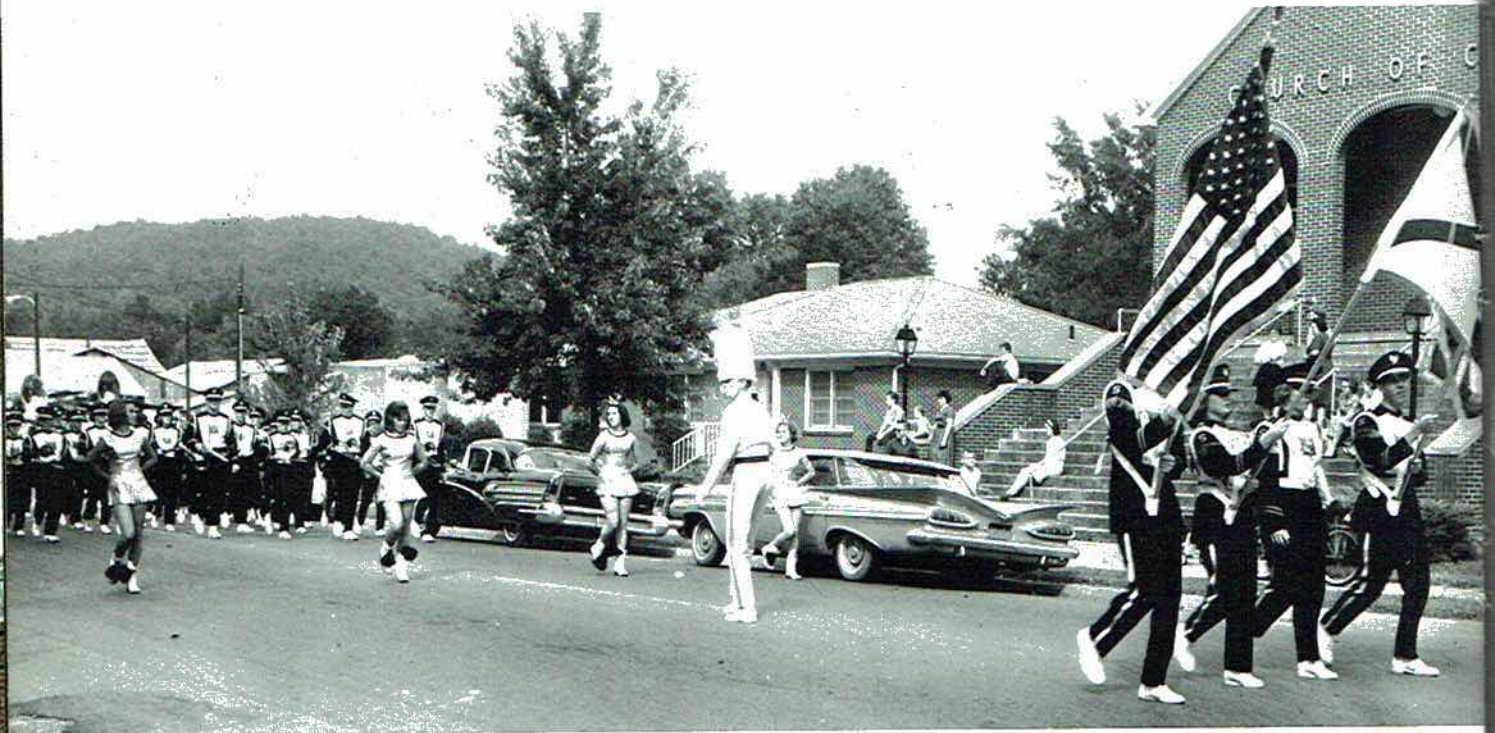








# *Laughter Prevails*







*Administration and Faculty*



# Scottsboro City Board of Education



MEMBERS: Dr. T. T. Nelson, Mr. Thomas Wilkinson, Mr. Clyde Butler, Mr. Alvin Butler, Dr. Brooks Woodall, Mr. Charles Bradford.

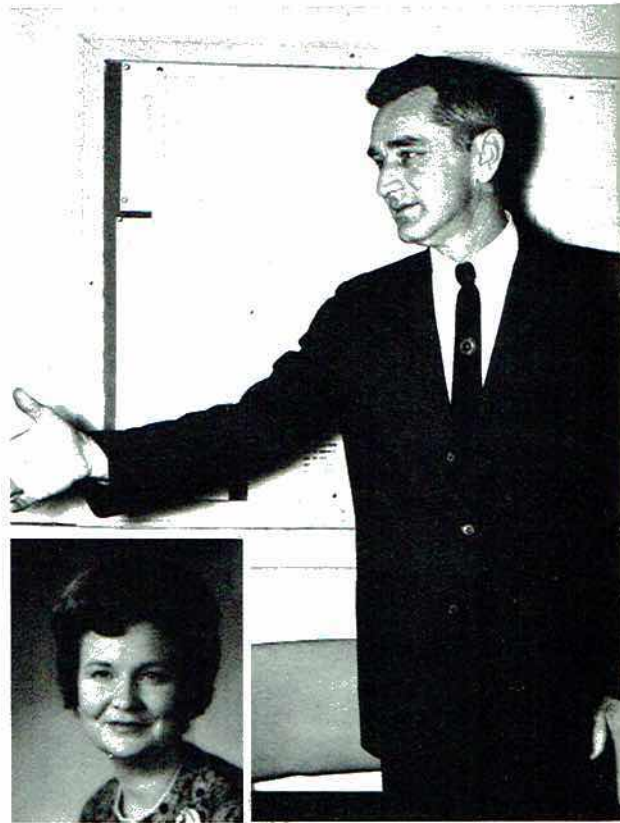
## Administrators Guide School

DR. T. T. NELSON  
Superintendent  
Scottsboro City Schools

MR. RAY COLLINS  
Principal  
Scottsboro High School



MRS. ROBERT BAGGETT  
Secretary  
Scottsboro City Schools



MRS. T. T. NELSON  
Secretary  
Scottsboro High School



# SHS Faculty



MRS. PEGGY ALLEN  
Alabama College - B.S.  
Vanderbilt - M.S.  
Biology  
Medical Careers Club Sponsor



MRS. ROY AMBRESTER  
Mary Hardin Baylor - B.S.  
University of Alabama - M.A.  
Guidance Counselor

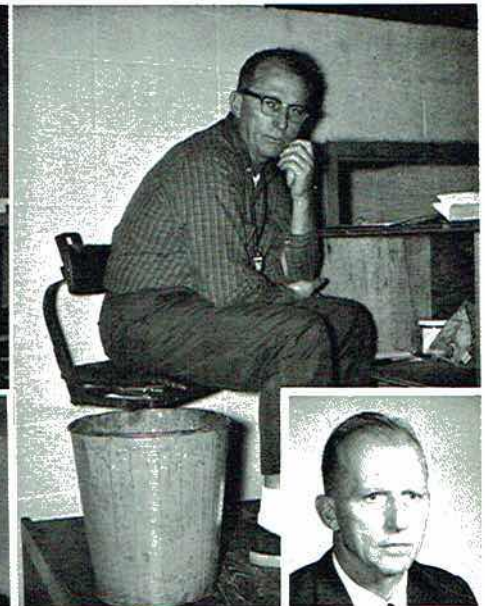
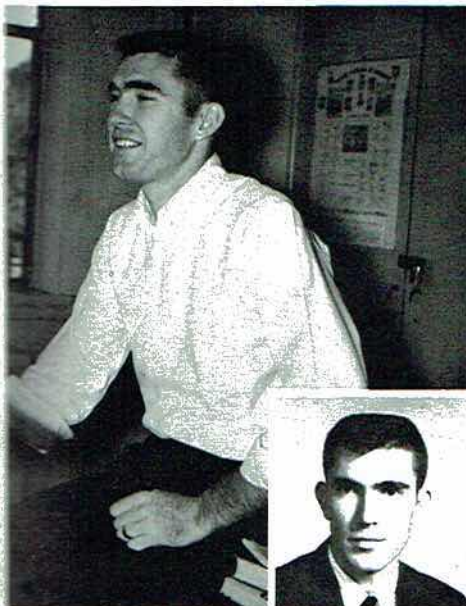


MRS. GEORGE ARMSTRONG  
Athens College - B.A.  
Peabody - M.A.  
English  
F.T.A. Sponsor

MR. KENNETH BARNES  
Florence State - B.S.  
American History,  
Democracy, Economics

MRS. JACK BROOME  
Florence State - B.S.  
Distributive Education  
Reminder Sponsor  
D.E. Club Sponsor

MR. Q.K. CARTER  
Jacksonville State - B.S.  
Physical Education







MR. JACK COX  
 Jacksonville State - B.S.  
 University of Alabama - M.A.  
 Band Director



MRS. NEWMAN DAVIS  
 University of Alabama - A.B.  
 English  
 Senior Class Sponsor



MRS. HOLLIS HAMBRICK  
 Alabama College - B.A.  
 Peabody - M.A.  
 English

MRS. SARA HARPER  
 Jacksonville - B.S.  
 English  
 World History

MRS. CHARLES HEATH, SR.  
 H. Sophie Newcomb - B. of Design  
 Mary Hardin Baylor - B.A.  
 Peabody - M. of Library Science  
 Librarian  
 Library Club Sponsor

MRS. CECIL HODGES  
 Athens College - B.S.  
 American History  
 World History







**MR. WILEY HOPPER**  
 Auburn University - B.S.  
 Auburn University - M.S.  
 Agriculture



**MRS. DORAN INGRAM**  
 University of Tenn. - B.S.  
 Home Economics  
 F.H.A. Sponsor

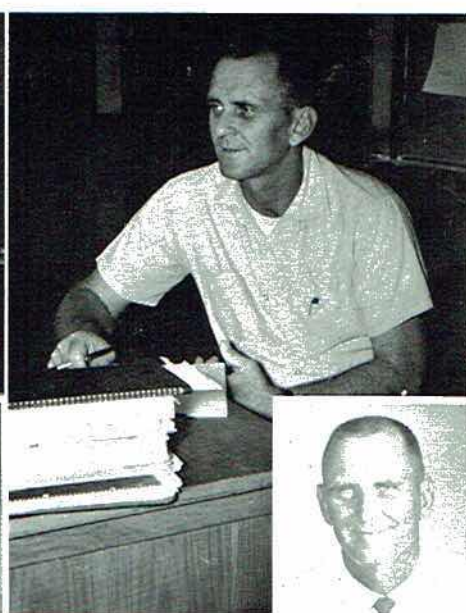


**MRS. JOSEPH A. LEE**  
 University of Alabama - B.S.  
 Peabody - M.A.  
 Chemistry, Physics  
 Science Club Sponsor

**MRS. W. W. MATTHEWS**  
 Alabama College - B.S.  
 Occupational Home Economics

**MRS. JOHN MEADOWS**  
 Jacksonville State - B.S.  
 Business Math-Law  
 Bookkeeping

**MR. JOHN MEADOWS**  
 Jacksonville - B.S.  
 Peabody - M.A.  
 Civics, Biology, Physical Education  
 "S" Club Sponsor







MISS CORA MICHAELS  
Bethel College - B.A.  
University of Alabama - M.A.  
Mathematics



MR. WILLIAM PENDERGRASS  
Jacksonville State - B.S.  
Mississippi Southern - M.S.  
Democracy, Economics Driver's  
Education  
National Honor Society



MR. J. R. PORCH  
Jacksonville State - B.S.  
Auburn - M.S.  
Vocational Industrial Education  
V.I.E. Club Sponsor

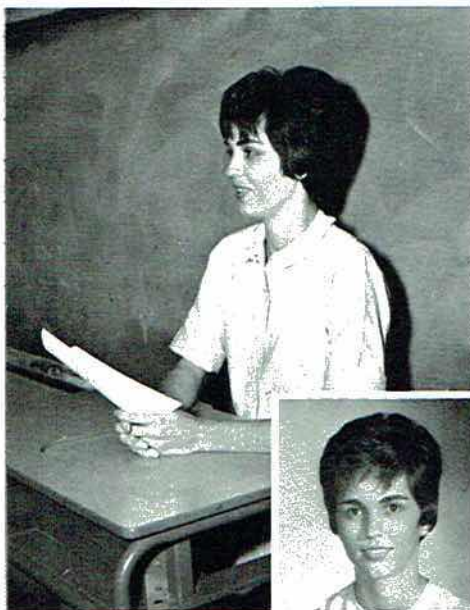


MRS. W. SANDERS  
Jacksonville State - B.S.  
Physical Education  
Pep Club Sponsor

MRS. H. W. REAVES  
Delta State - B.S.  
Business Education

MRS. JAN ROBERTS  
University of Tennessee - B.A.  
Languages

MRS. FRED SANDERS  
University of Alabama - B.A.  
Peabody - M.A.  
Mathematics  
Student Council  
Sponsor



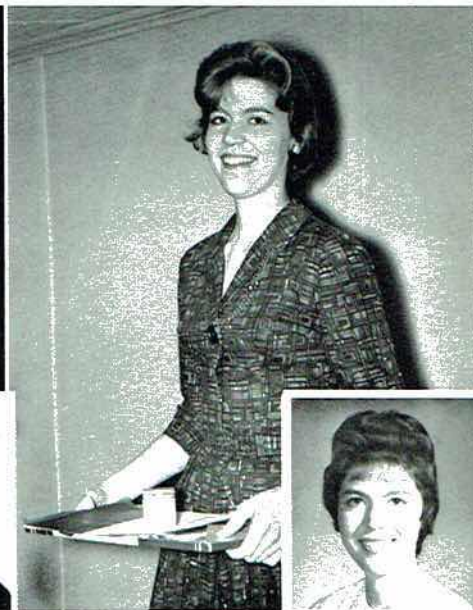




MRS. WILLIAM SLOAN  
Jacksonville State - B.S.  
Physical Education  
Pep Club Sponsor



MRS. THOMAS STEVENSON  
University of Alabama - B.A.  
Speech, English



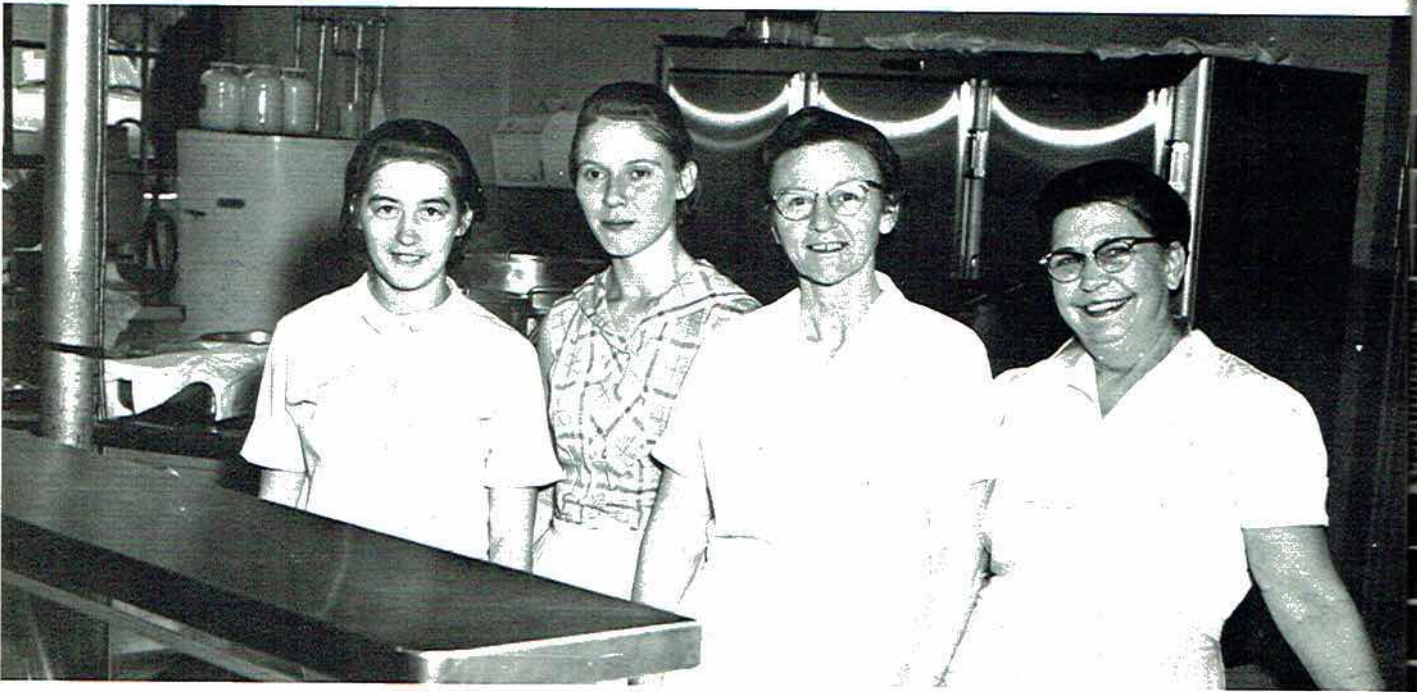
MRS. FRED WALLINGSFORD  
Florence State - B.S.  
Business Education  
Wildcat Sponsor

To our teachers we wish to express our appreciation for their assistance, guidance, patience, and thought. Each of us sincerely extends his fondest thanks and best wishes for the future.

THE SENIORS

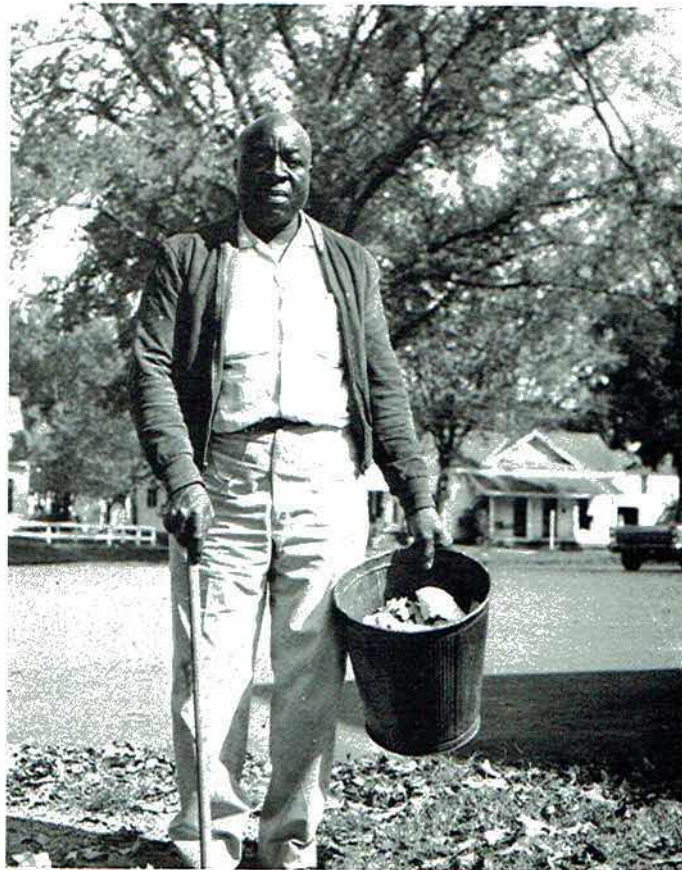


*We Appreciate Our . . .*



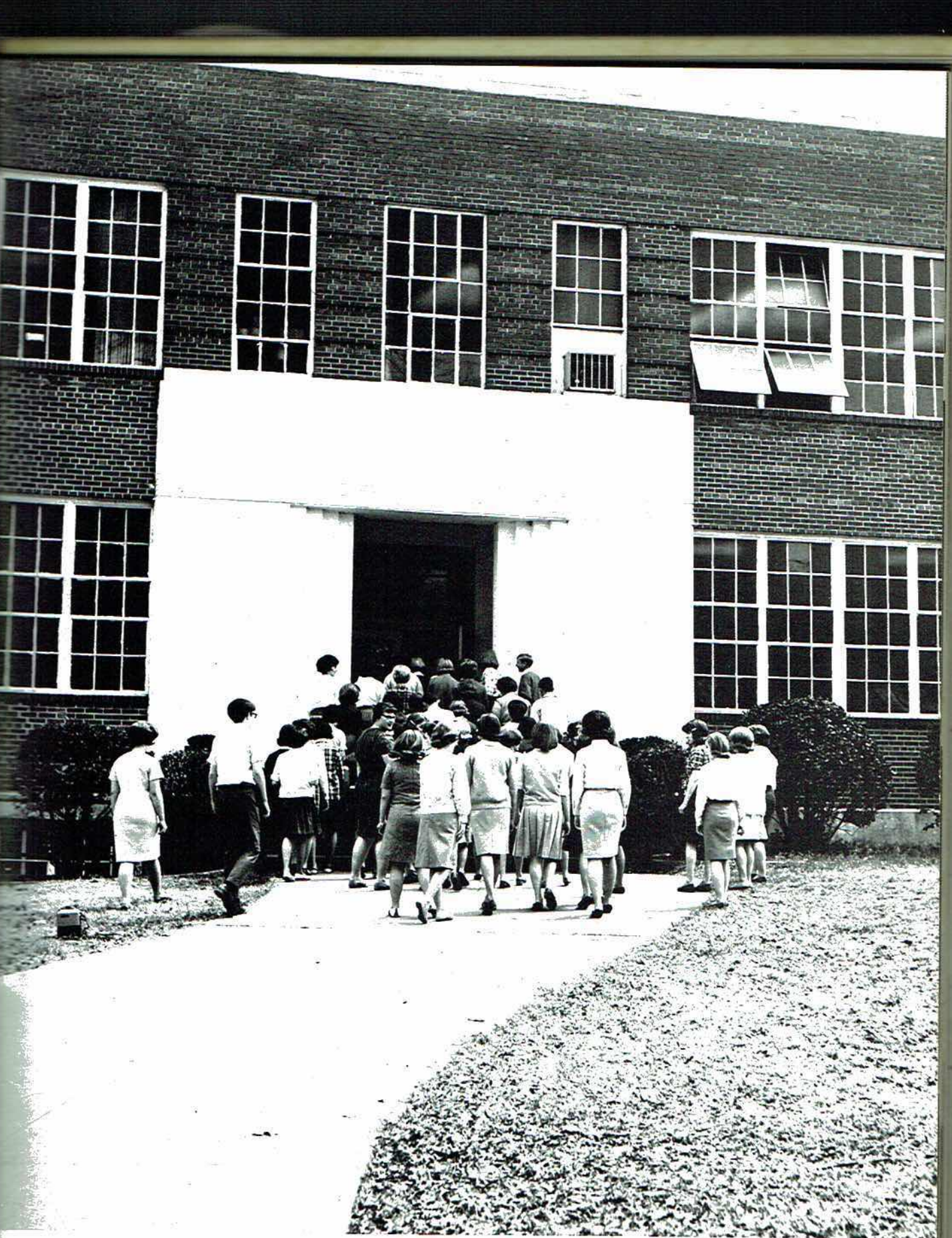
DIETICIANS

Left to right: Joyce Lewis, Janie York, Billie Hastings, and Bell Hart.



CUSTODIAN  
John Snodgrass





## *Classes*



# Seniors



CHARLES AD  
Pep Club 1-3  
Council 3; T

JOHNNY ADA  
Pep Club 1-3  
2-3; Spanish

BRENDA KAY  
Pep Club 1-3  
Medical Care

DAVID WAY  
Pep Club 1-3  
Club 1.

CHARLES EDV  
Pep Club 1-3

RONALD ATC  
Pep Club 1-3  
1-3; Vice - Pr  
1-3; Basketba  
3.

## Senior Class Officers

President - - - - - Robert Bonner  
Vice-President - - - - - Sue Ellen Harris  
Secretary - - - - - Caroline Weavil

Typists - - - - - Mary E. Sumner  
Susan Gentle  
Treasurer - - - - - James Clemens





**CHARLES ADAMS**  
Pep Club 1-3; "S" Club 1-3; Student  
Council 3; Track 2-3; Football 1-3.



**JOHNNY ADAMS**  
Pep Club 1-3; Football 1-3; "S" Club  
2-3; Spanish Club 2.

**BRENDA KAYE ALLEN**  
Pep Club 1-3; Library Club 1-3;  
Medical Careers 2-3; FHA 1, 3.



**DAVID WAYNE ANDERSON**  
Pep Club 1-3; "S" Club 2-3; Latin  
Club 1.

**CHARLES EDWARD ARNOLD**  
Pep Club 1-3; FFA 1-3.



**DONALD ATCHLEY**  
Pep Club 1-3; "S" Club 1-3; FFA  
2-3; Vice-President 3; Football  
1-3; Basketball 1-2; FHA Sweetheart  
3.

"Our group has 29% fewer cavities"







RUSSELL CLAY ATCHLEY  
FFA 1-3; "S" Club 1-3; Football  
1-3; Basketball 1.



LAURA ATKINS  
FHA 1; Library Club 1; Pep Club  
1-3; VIE 2-3, Reporter 3.



EDDIE RAY AUSTIN  
Band 1-3, Captain 3.



GEORGE EMMITT BARBER  
Pep Club 1-3; FFA 1-3.



EARL A. BISHOP  
Pep Club 1-3; FFA 1; VIE 3.



ROBERT LYNN BONNER  
Pep Club 1-3; Football 1-3; "S"  
Club 2-3; Boy's State 2; National  
Honor Society 3; Class President  
2-3; Who's Who Most Dependable  
3; Medical Careers Club 1-2.



VIRGINIA BRADFORD  
Pep Club 2-3.



EILEEN BROOKS  
Pep Club 1-3; Spanish Club 2.



CLYDE  
Latin C  
Preside  
1-3, Pr  
2-3, V  
Nationa  
ball 1-  
2; Bask  
Favorite  
to Succ

JANUIC  
Pep Clu  
Club 2;  
Spanish  
Staff 3;

ALBERT  
FFA 1-3  
Manag

ELIZAB  
Pep Clu  
Spanis  
Photogr  
Annual

JERRY V  
Pep Clu

DUSTY  
Pep Clu  
2, 3; La





1966 Prom King and Queen

CLYDE W. BUTLER, JR.  
 Latin Club 1; "S" Club 1-3; Class  
 President 1; Medical Careers Club  
 1-3, President 2; Student Council  
 2-3, Vice-President 2, President 3;  
 National Honor Society 2-3; Foot-  
 ball 1-3, Best Returning Lineman  
 2; Basketball 2-3; Track 2-3; Class  
 Favorite 1-2; Who's Who Most Likely  
 to Succeed 3; All-State Football 3.

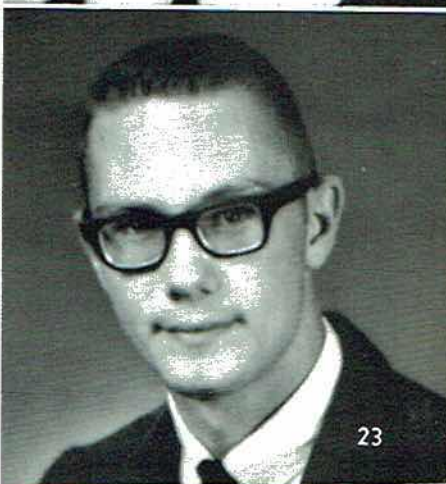
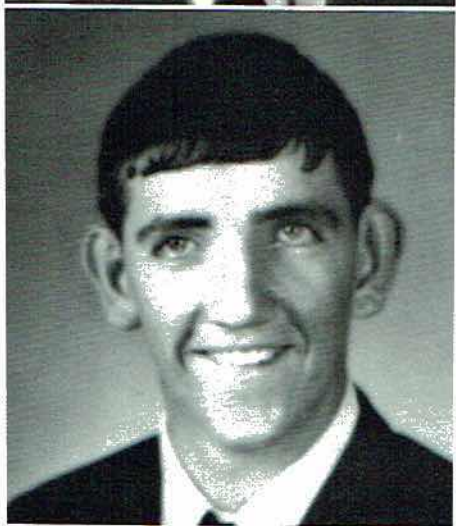
JANUICE A. CAMPBELL  
 Pep Club 1-3; Medical Careers  
 Club 2; FTA 3; Library Club 2-3;  
 Spanish Club 2; Band 1-3; Wildcat  
 Staff 3; Annual Staff 3.

ALBERT W. CARLTON  
 FFA 1-3; "S" Club 2-3; Football  
 Manager 2-3.

ELIZABETH ANN CARTER  
 Pep Club 1-3; Science Club 2;  
 Spanish Club 2; FTA 2-3; FHA 3;  
 Photographer 3; Wildcat Staff 3;  
 Annual Staff 3.

JERRY WAYNE CARTER  
 Pep Club 1-3; FFA 1-3.

DUSTY JOE CASH  
 Pep Club 3; "S" Club 3; Football  
 2, 3; Latin Club 1.







MARY SUE CASH  
 Pep Club 1-3; Library Club 1-3,  
 President 3, Secretary 2, Assistant  
 1; FHA 1, 3; Office Assistant 3.



TOMMY CHANDLER  
 VIE 2-3; FFA 2.



MARY ROSE CLARK  
 Pep Club 1-3; Library Club 1-2;  
 FHA 1; FTA 3.



JAMES F. CLEMENS  
 Pep Club 1-3; National Honor Soci-  
 ety 2-3, Vice-President 3; Who's  
 Who Most Studious 3 Sportsman's  
 Club 1-2, Vice-President 2; Class  
 Treasurer 3; Track 2-3; Office  
 Assistant 2; Representative-Ala.  
 Conference on Citizenship 2.



NANCY LEIGH COLLINS  
 Pep Club 1-3; "S" Club 2-3; Stu-  
 dent Council 1, 3; FTA 2, 3 Histor-  
 ian 3; Cheerleader 2-3 National  
 Honor Society 2-3, Treasurer 3;  
 Spanish Club 2 Homecoming  
 Attendant 1; Representative -  
 Student County Gov. 2 Wildcat  
 Staff 3, Asst. Editor 3; Reminder  
 Staff 3, Asst. Editor 3; D.A.R.  
 Good Citizen Girl 3; Who's Who  
 Most Dependable 3



BRENDA CAROLYN COMBS  
 Transfer Student : FTA 1-3; Pep  
 Club 2-3; Trojans Staff 2; Centaur  
 Staff 2.



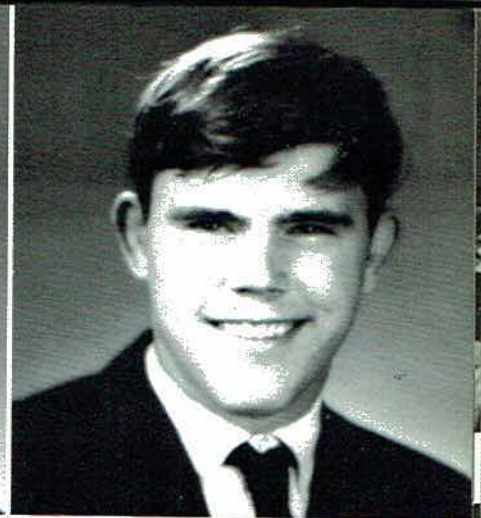
GERALD COMBS  
 FFA 1-3.



CAROL CORDELL  
 Pep Club 1-3; FHA 1-3; Band 1-3.

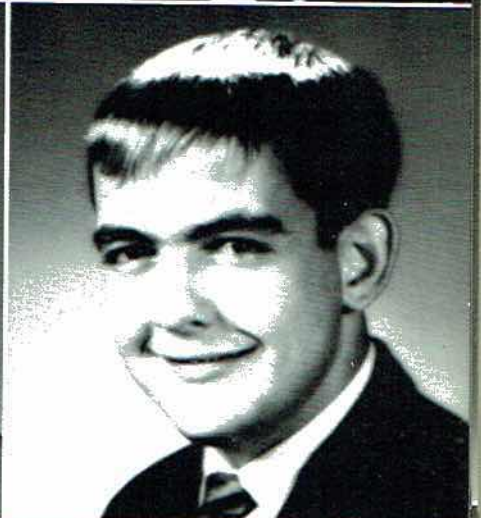
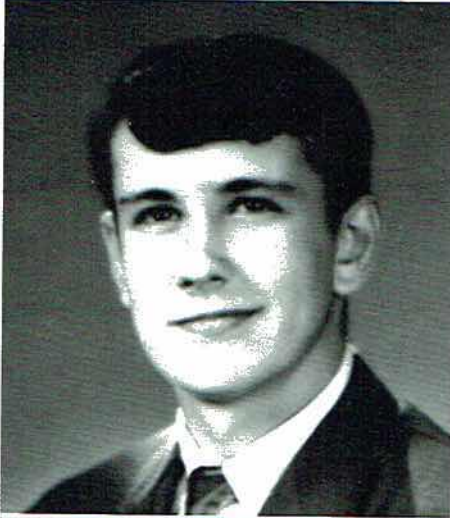


ALVIN CORNELISON  
FFA 3.



ROBERT COULSON  
Pep Club 1-3; FFA 1; VIE 2, 3.

CHARLES CRUCE  
Pep Club 1-3; Library Club 3;  
Sportsman's Club 2; "S" Club 1, 2;  
Basketball 1.



JAMES R. DAWSON  
Pep Club 1-3.

BRENDA DAY  
Pep Club 1-3; FHA 1; Library Club  
1; D. E. 3.



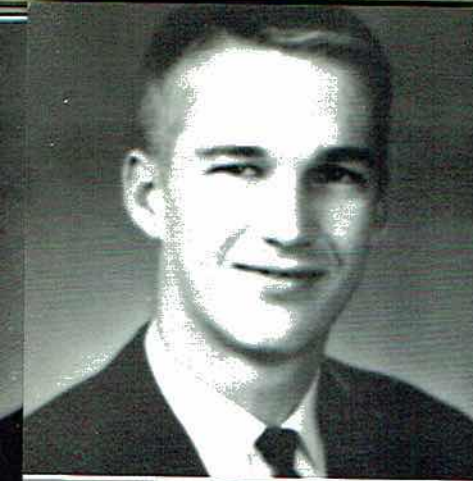
CHARLES DERRICK  
Pep Club 1-3; "S" Club 1-3; Track  
2; Basketball 3; Football 1-3; Best  
Returning Defensive Back 2; Nation-  
al Honor Society 2, 3; Student Coun-  
ty Government Representative 2.

"Look into my eyes.....you are getting sleepy,  
sleepy....."

You meet the nicest people on a Honda, eh, Charles!







TERRY D. EAKIN  
Pep Club 2, 3; "S" Club 2, 3; Football 1, 2; VIE 2, 3, President 3, Mr. VIE 2; Student Council 2.



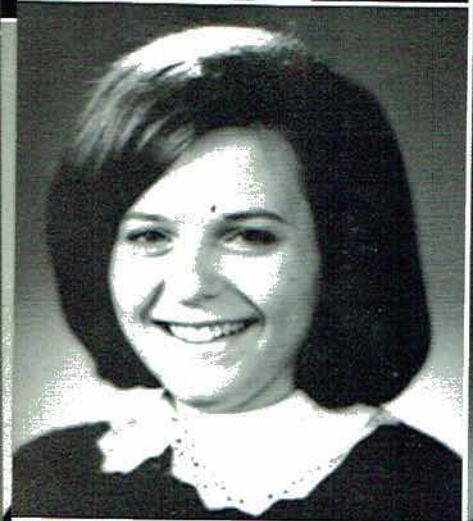
BOBBY EASTHAM  
Pep Club 1-3; Basketball 1; D.E. 3, President 3; Who's Who Neatest 3.



GERALD EDMONDS  
Pep Club 1-3; FFA 1-3, Reporter 3.



MARTHA ALICE FRAZIER  
Pep Club 1-3; FHA 1, 3.



SUSAN KAY GENTLE  
Pep Club 1-3; Latin Club 1, Secretary-Treasurer 1; FTA 3, Parliamentarian 3; Science Club 2, 3, President 3; National Honor Society 2, 3; Student Council 3; Class Typist 3; Delegate to NHS State Convention 2; Student-County Government Representative 2; Who's Who Most Considerate 3.



MARTHA LYNN GLADISH  
Pep Club 1-3; Medical Club 2, 3; FHA 1; Library club 1-3; Band 1-3.



DORIS GOSSETT  
FHA 1, 3.

Bye Mom!  
Don't wait up  
for me!



MARTHA LYNN  
Pep Club 1-3

JANICE NORE  
Pep Club 1-3  
Miss SHS Run

JUDY GWATH  
Pep Club 1-3;  
tarian 3, Stat  
Careers Club

ROBERT WAL  
Pep Club 1-3;  
1-3; Football

BETTYE JEAN  
Pep Club 1-3;  
1-3; VIE 2, 3,  
President 3.

PATRICIA MC  
Pep Club 1-3;  
Spanish Club 2





Scottsboro High School "Pet Society".

MARTHA LYNN GREENE  
Pep Club 1-3; FHA 1, 3.

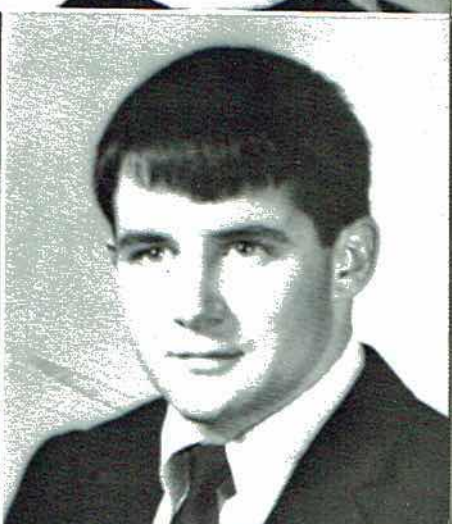
JANICE NOREEN GROSS  
Pep Club 1-3; Science Club 2, 3;  
Miss SHS Runner-Up 3.

JUDY GWATHNEY  
Pep Club 1-3; FHA 1-3, Parliamen-  
tarian 3, State Degree 2; Medical  
Careers Club 3; Library Club 1-3.

ROBERT WALTER HAAS  
Pep Club 1-3; FFA 1-3; "S" Club  
1-3; Football 1-3.

BETTYE JEAN HALL  
Pep Club 1-3; FHA 1; Library Club  
1-3; VIE 2, 3, Miss VIE 2, 3, Vice-  
President 3.

PATRICIA MONZA HALL  
Pep Club 1-3; Library Club 1-3;  
Spanish Club 2.







BEVERLY LEIGH HANCOCK  
 Pep Club 1-3; Spanish Club 2-3,  
 Secretary-treasurer 2. FTA 3;  
 National Honor Society 3; FHA  
 1; Student Council 3; Band 1-3;

LILA MARIE HARRIS  
 Transfer Student; Beta Club 1;  
 Library Club 1; Science Club 1;  
 FHA 1-3; VIE 2-3.



SUE ELLEN HARRIS  
 Latin Club 1; Medical Careers 2;  
 Pep Club 2-3; Student Council 3;  
 FTA 1-3, President 3; NHS 3; Vice-  
 President Senior Class 3; Wildcat  
 staff 3; Reminder staff 3, Editor 3;  
 Who's Who Most Likely To Succeed  
 3.

DONNIE HESS  
 FFA 1-3, Secretary 2.



DOROTHY LYNN HICKS  
 FHA 1; Pep Club 1-3; Library Club  
 1-2.

LARRY HIGGINBOTHAM  
 FFA 1-3; Pep Club 1.



A. B. HOLCOMB  
 Pep Club 1-3.

SAVANAH ISBELL  
 Pep Club 1-3; Library Club 1-3,  
 Secretary 3; Who's Who Friendliest  
 3.

"You  
 Goose





LINDA ELAINE IVEY  
Pep Club 1-3; Library Club 1-3.

ELIZABETH ANN JACOBS  
Pep Club 1-3; FHA 1.



OTIS JEFFERY  
Pep Club 1-3; "S" Club 2-3; VIE  
Club 2-3; Mr. VIE 3; Treasurer 3;  
Football 1-2.

LINDA SUE JOHNSON  
FHA 1, 3.



SANDRA ELIZABETH JOHNSON  
Pep Club 1-3; FHA 1-2.

DALE JONES  
Transfer Student; Pep Club 1-3;  
Science Club 1-3; Football 1-2;  
Beta Club 1-2.



"You mean all I have to do is sign this and I own  
Goose Pond Island?????"



"You may be taller than I am, but my head is bigger"







**JERRY JUDGE**  
Sportsman's Club 1; "S" Club 2-3;  
National Honor Society 3; Pep Club  
1-3; Football 1-3; All-State Team  
3; Track 3.

**ROGER R. JUNIOR**  
Science Club 3



**BILLIE JOAN KEASLING**  
FHA 1; Pep Club 1-3; Library Club  
1-3

**CHARLES KELLER**  
FFA 1-3.



**CHARLES R. KENNAMER**  
Pep Club 1-3; Science Club 2-3.

**WANDA M. KENNAMER**  
Pep Club 1-3; Student Council 1-2;  
National Honor Society 1-3; Secretary  
3; FTA 3; Library Club 3; Medical  
Careers Club 2; Spanish Club 2,  
Pres. 2; Band 1-3, Sec-Treas. 3;  
Reminder Staff 3; Wildcat Staff 3;  
All Star Band 2; American History  
Award 2; Who's Who Most Studious  
3; Delegate to State NHS Convention  
2.



**BARBARA ADAMS KENT**  
FHA 1, 3; Pep Club 1-3; Library  
Club 3.

**JANICE KILGRO**  
Pep Club 1-3; Library Club 2-3;  
Medical Careers Club 2-3; FHA 1.



**JUDY**  
Pep Cl  
ical C  
1-3.

**LINDA**  
Pep Cl  
1-3.

**CAROL**  
Pep Cl  
1-3.

**GEORGE**  
Pep Cl

**JOYCE**  
Pep Cl  
Spanish  
Society  
FHA 3,  
ponden  
Betty C  
Wildca  
Who's

**TOMM**  
Pep Cl  
3.





"With this ring, I do thee wed"



"O.K. --- our hands are clean. Now can we go out and play?"

JUDY KAY KILLINGSWORTH  
Pep Club 1-2; FHA 1; D.E. 3; Medical Careers Club 2; Library Club 1-3.



LINDA LAVONNE KIRBY  
Pep Club 1-3; FHA 1; Library Club 1-3.



CAROLYN LANIER  
Pep Club 2-3; FHA 1; Library Club 1-3.



GEORGE O. LEWIS  
Pep Club 1-3; VIE 3.



JOYCE LYNN LOYD  
Pep Club 1-3; Science Club 2; Spanish Club 2; National Honor Society 1-3; FTA 1-3, Sec. 3; FHA 3, Treasurer 3; Co-ed Correspondent 3; Miss FHA Alternate 3; Betty Crocker Homemaker 3; Wildcat Staff 3; Annual Staff 3; Who's Who Most Original 3.



TOMMY WAYNE MANNING  
Pep Club 1-2; FFA 1; VIE 2; D.E. 3.







BARBARA MAPLES  
Pep Club 1-3; FHA 1; Library Club 1.



PATSY ANN MARTIN  
FHA 1; Pep Club 1-3; Library Club 1; Student Council 1.



MARY ANN MATTHEWS  
FHA 1-3, Recreational Leader 2, 3; Library Club 1, 2 Pep Club 1-3; Medical Careers 3; School-Beef-Cook-Off Winner 3; Delegate to National FHA Convention 3; State FHA Degree 2; Who's Who Most Talented 3.



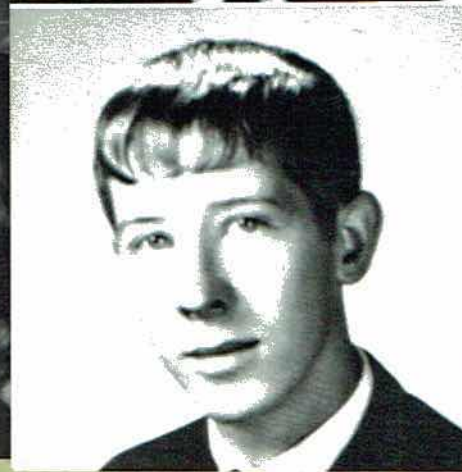
VIRGINIA RAYE MATTHEWS  
FHA 1; Pep Club 1-3; Medical Careers Club 2, 3.



GARY McBRIDE  
"S" Club 1-3; Pep Club 3; FFA 1; Band 1-3; Basketball 1-3.



LARRY MITCHELL  
VIE 2, 3; Pep Club 3



WAYNE MURRY  
FFA 1-3; Pep Club 1-3; "S" Club 2; Colorguard 3.



HILDA SUE NEYMAN  
FHA 1-3, Reporter 2, President 3, State Convention 3, State Degree 2; Student Council 1; Pep Club 1-3; Band 1-3, Majorette 1-3, Head Majorette 3, Band Sweetheart 3; Homecoming Attendant 3; FTA 3; Miss SHS Runner-Up 1-2, Miss SHS 3; Wildcat Staff 3; Annual Staff 3; Who's Who Prettiest 3; Citizenship Conference Delegate 2; National Honor Society 3 Library Club 3; Debate Team 3.

DAVID OVE  
FFA 1-3; Pe  
ers Degree 2

LEWIS W. P  
Pep Club 1-  
Club 1, 3; S  
bate Team  
1-3; 2nd Lie  
3; National  
Your Best Te  
Latin Club 1  
ented 3.

JAY CLAYT  
Pep Club 1-  
Club 1-3; Pr  
1-3; Science  
Basketball 1,

PAMELA GR  
Transfer stud  
Student Coun  
"B" Team C  
Club 1; Pep

LINDA GAIL  
Pep Club 1-3  
FHA 1-3; Sec  
heart 3.

A hotdog never t



DAVID OVERTON

FFA 1-3; Pep Club 1-3; State Farmers Degree 2.



LEWIS W. PAGE, JR.

Pep Club 1-3; Medical Careers Club 1, 3; Science Club 2, 3; Debate Team 1-3; Captain 3; Band 1-3; 2nd Lieutenant 3; Sweetheart 3; National Honor Society 2, 3; Test Your Best Team 3; Boy's State 2; Latin Club 1; Who's Who Most Talented 3.



JAY CLAYTON PEACOCK

Pep Club 1-3; Medical Careers Club 1-3; President 3; "S" Club 1-3; Science Club 3; Football 1-3; Basketball 1, 2; Sportsman's Club 1, 2.

PAMELA GRACE PETTY

Transfer student; Tri-Hi-Y 1, 2; Student Council 2; Beta Club 2; "B" Team Cheerleader 2; Dramatics Club 1; Pep Club 3; Color Guard 3.

LINDA GAIL PORTER

Pep Club 1-3; Library Club 1, 2; FHA 1-3; Secretary 3; FFA Sweetheart 3.



hotdog never tasted better than on the senior trip.

Merrily we roll along!







LARRY DON POTTER  
FFA 1; Library Club 3.



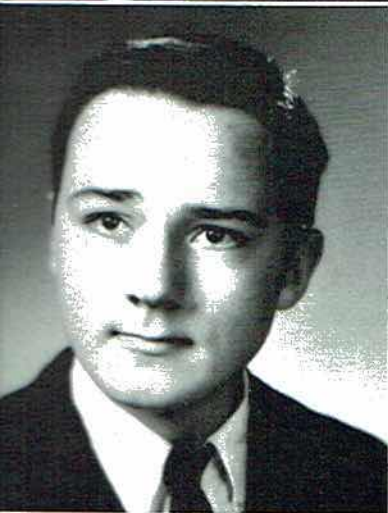
CHARLIE PRECISE  
Pep Club 2-3; FFA 1-3.



WILLIAM MICHAEL REEDSTROM  
Transfer Student: Pep Club 2;  
Science Club 3; Track Team 2-3;  
Band Color Guard 3; Medical Careers  
Club 2-3; National Merit Semi-  
Finalist 2



ROSA ELIZABETH REID  
National Honor Society 2-3; FTA  
2-3; Spanish Club 2; FHA 1-3  
Treasurer 1-2, Vice President 3,  
State Degree 2; Miss FHA 1; "S"  
Club 1-3; Cheerleader 1-3, Head  
Cheerleader 3; Pep Club 1-3 Class  
Treasurer 2; Girl's State 2; Who's  
Who Most School Spirit 3.



JIMMY PROCTOR RENSLOW  
Pep Club 2-3; VIE 2-3.



CAROLYN RICHIE  
Pep Club 1-3; Library Club 1-3;  
FHA 1-3, Historian 3; FTA 3; FHA  
State Degree 3, Miss FHA Alternate  
3; Miss SHS Runner-up 3, Miss Con-  
geniality 3; McCalls Teen Fashion  
Board member 3.



BRENDA ROBERTS  
Pep Club 3; Library Club 1; FHA 2.



TERRY EDWIN ROBERTS  
Pep Club 1-3.



CAROLYN  
Pep Club  
FHA 1, 3

JEAN A  
FHA 1-

THOMAS  
Pep Club

RITA RU  
Pep Club  
1-3; FHA  
National  
Secretary  
Class Fa  
Attenda  
Miss FH  
sistant e  
Editor 3;  
3. FHA

BILLY J  
Pep Club  
Club 2.

MICKEY  
Pep Club  
FHA 1, 3





The race is on.



Hardworking senior, Billy Woosley, learns all about the pause that refreshes.

CAROLYN ROBERTSON  
 Pep Club 1-3; Library Club 1-2;  
 FHA 1, 3; FHA State degree.

JEAN ADAIR RODGERS  
 FHA 1-3; Pep Club 2-3.



THOMAS LARRY ROREX  
 Pep Club 1-3; Sportsmen's Club 2.

RITA RUDDER  
 Pep Club 1-3; "S" Club 2-3; FTA  
 1-3; FHA 1, 3; FHA Reporter 3;  
 National Honor Society 2-3; Class  
 Secretary 2; Cheerleader 2-3;  
 Class Favorite 1-3; Homecoming  
 Attendant 2; Homecoming Queen 3;  
 Miss FHA 3; Annual Staff 1-3, As-  
 sistant editor 2; Wildcat Staff 1-3,  
 Editor 3; Who's Who Best All Around  
 3. FHA State Degree 3; Prom Queen.



BILLY JOE SAINT  
 Pep Club 2-3; FFA 1; Sportsman  
 Club 2.

MICKEY DEANNA SELBY  
 Pep Club 1-3; Library Club 1-3  
 FHA 1, 3; Medical Careers Club 3.







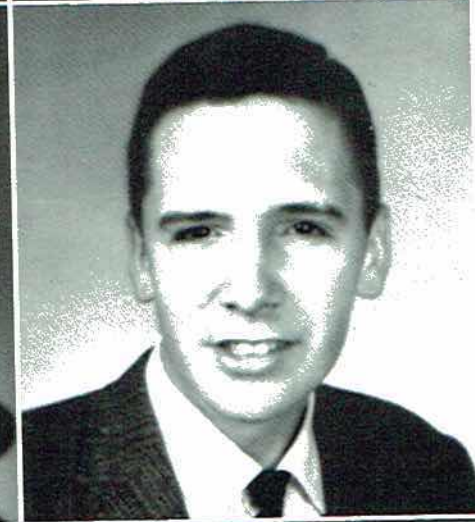
CAROLYN SHARPE  
Pep Club 2-3; Library Club 1-3;  
FHA 1.

CAROLYN ANN SHELTON  
Pep Club 2-3.



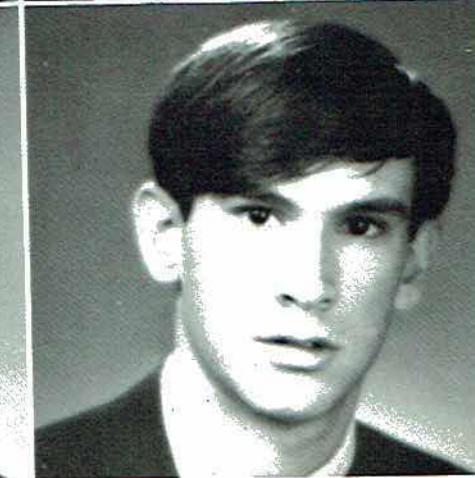
EDWARD J. W. SMART  
Pep Club 1-3; Latin Club 1 Science  
Club 3; Medical Careers Club 3.

LARRY SMART  
Pep Club 2; "S" Club 2-3; Football  
1-3; All-State Football 3; Class  
Favorite 3 Who's Who Friendliest 3.



CAROLYN JEAN SMITH  
Pep Club 1-3; Library Club 1-3;  
FHA 1.

SPENCER WAYNE SMITH  
FFA 1-3.



GERALD STEELEY  
Pep Club 3.

TOMMY FRANKLIN STEVENSON, JR.  
Transfer Student: Science Club 2-3,  
Reporter 2-3; Pep Club 2-3; FTA 3;  
Student Council Chaplain 3; Who's  
Who Most Original 3; Wildcat Staff  
3; Annual Staff 3; Band Announcer 3.



WILLIAM G. STEWART, JR.  
 Pep Club 1-3; Science Club 3, Vice-  
 President 3; National Honor Society  
 3; "S" Club 1-3; President 3; Span-  
 ish Club 2; Football 1-3.

MARY ELIZABETH SUMNER  
 Pep Club 2-3; FHA 1; Latin Club  
 1-2; Class Typist 3.



FRED SWEARENGIN  
 FFA 1.

NANCY TATE  
 Pep Club 1-3, President 3; Medical  
 Careers Club 1-3, Vice-President  
 2; Library Club 1, 3; Spanish Club 2;  
 FTA 1-3; Wildcat Staff 3; Annual  
 Staff 3; Who's Who Most Athletic 3.



SUE THOMPSON  
 Pep Club 1-3; Library Club 1-3;  
 Band 1-3.



"Larry, is it really that bad!!"



Webb models the latest style in Nassau

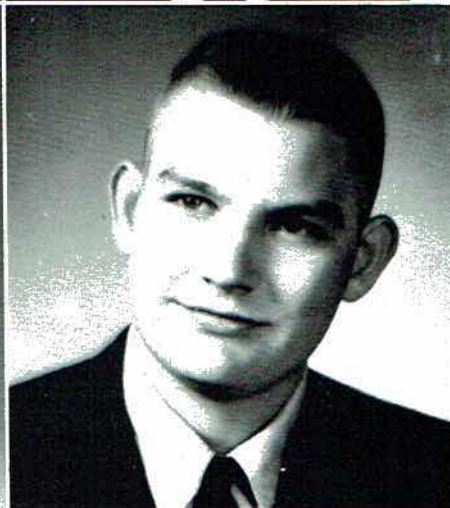






GORDON TUBBS  
 Pep Club 1-3; "S" Club 2-3; Student  
 Council 1; Football 1

KENNETH TURNER  
 FFA 1-3; VIE 3.



WILLIAM LUTHER UTLEY  
 FFA 1, 2; Pep Club 3; DE 3.

FLOYD VAUGHT  
 FFA 1-3, Secretary 3; Pep Club 3.



EARNIE RAY VENABLE  
 Pep Club 1, 3; FFA 1-3.

PATRICIA ELAINE VENABLE  
 Pep Club 1-2; FHA 1



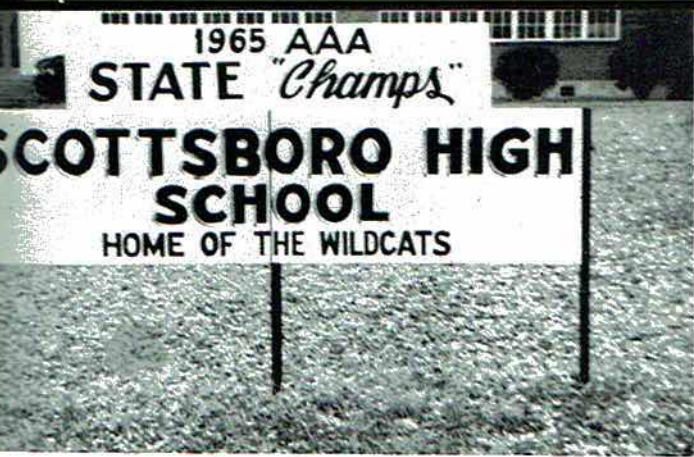
NANCY WALKER  
 Pep Club 1; DO 2; FHA 2.

SANDRA ANN WANN  
 VIE 2-3; FHA 1; Pep Club 1-3  
 Library Club 1-3.



O  
 RA  
 Lat  
 Nat  
 den  
 2, 3  
 Clu  
 Sen  
 You  
 Ala  
 3; I  
 Wh  
 LEA  
 Pep  
 Clu  
 CA  
 Pep  
 3; I  
 Clu  
 Clu  
 3; I  
 BIL  
 Stu  
 Wh  
 DO  
 Pep  
 Sta  
 1-3  
 Clu  
 Pre  
 let  
 PA  
 Pep  
 Clu





One picture is worth a thousand words.

Exchanging personal cards is a senior tradition

**RAYMOND LARRY WARD**  
Latin Club 1, Vice-President 1;  
National Honor Society 1-3, Presi-  
dent 3; FTA 1-3; Student Council  
2, 3, Secretary-Treasurer 3; Pep  
Club 1-3; Boys State 2; Outstanding  
Senator 1965 2; 1966 U.S. Senate  
Youth Program, Delegate from  
Alabama 3; Try Your Best Panelist  
3; Delegate AASC Convention 2;  
Who's Who Best All Around 3.



**LEAH ANNETTE WATTS**  
Pep Club 1-3; FHA 1, 3; Library  
Club 2-3.



**CAROLINE WEAVIL**  
Pep Club 1-3; FTA 2, 3, Treasurer  
3; National Honor Society 3; Science  
Club 2; Library Club 1-3; Latin  
Club 1, President 1; Class Secretary  
3; Who's Who Neatest 3.



**BILLY RAY WEBB**  
Student Council 1; "S" Club 3;  
Who's Who Most Considerate 3.



**DONALD WEBB**  
Pep Club 1-3; Football 1-3; Tri-  
State Football Team 3; Basketball  
1-3; Track 2, 3; Medical Careers  
Club 3; "S" Club 1-3; Class Vice-  
President 2; Who's Who Most Ath-  
letic 3.



**PATSY WEBB**  
Pep Club 1-3; FHA 1, 3; Library  
Club 3.







PATSY GAIL WHITE  
Pep Club 1-3; Latin Club 1; FHA  
1,2.

DOROTHY M. WHITEHEAD  
Pep Club 1-3; FHA 1; Library Club  
1,2; Medical Careers Club 3.



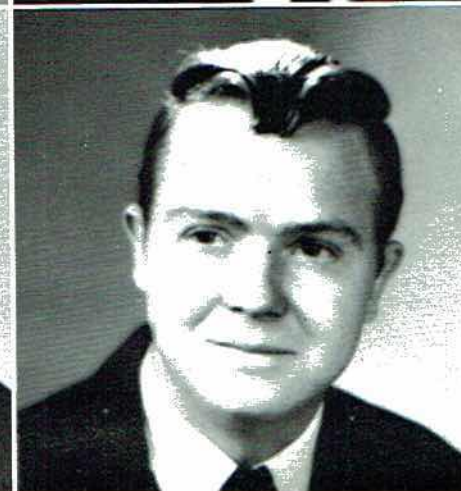
BARBARA WILBORN  
Pep Club 1-3; FHA 1,2.

DWAYNE WILKERSON  
Pep Club 1-3.



RITA JOYCE WILKERSON  
Pep Club 1-3.

GLENN RAY WILLIAMS, JR.  
Student Council 1,2; Pep Club 1,2;  
Sportsman Club 1,2; "S" Club 2,3;  
Football 1-3; Most Valuable Player  
3, Best Defensive Lineman 1, Best  
All-Around Player 2; All-State,  
All Tri-State Football Team 3;  
Track 1-3; Student County Govern-  
ment Representative 2.



MIKE WILLIAMSON  
"S" Club 1-3, Vice-President 2;  
Pep Club 1-3; Medical Careers Club  
1,3; Science Club 3; Sportsman  
Club 1,2; Football 1-3, Most Val-  
uable Defensive Lineman Returning  
2; All State Football 3; All Tri-State  
Football 3; Who's Who Most Hand-  
some 3; Track 2,3.

ARNOLD WILLMON  
FFA 1.



WAYNE  
"S" C  
3; Foo







WAYNE WOODEN  
"S" Club 2, 3; Pep Club 1-2; FFA  
3; Football 1-3.



BILLY RONALD WOOSLEY  
Pep Club 2, 3; "S" Club 2, 3; Foot-  
ball 1-3; Track 2, 3.



CARLOS WOOSLEY  
Pep Club 1-3, Vice-President 2,  
Treasurer 3; D.E. Club 3, Reporter  
3; Wildcat Staff 3; Annual Staff 3;  
Who's Who Most School Spirit 3.

Seniors in Nassau





# Graduation Honors and . . .



BALFOUR AWARD  
Larry Ward



ENGLISH MEDAL-HODGE'S SCHOLARSHIP  
Wanda Kennamer



F. T. A. SCHOLARSHIP-GOOD CITIZENSHIP  
Nancy Collins



CIVITAN AWARD  
Billy Ray Webb



DANFORTH FOUNDATION AWARD  
Dorothy Whitehead - A. B. Holcomb



LIBRARY AWARD  
Linda Ivey



ARMED FORCES ELECTRONICS and COMMUNICATIONS  
AWARD  
Dusty Cash



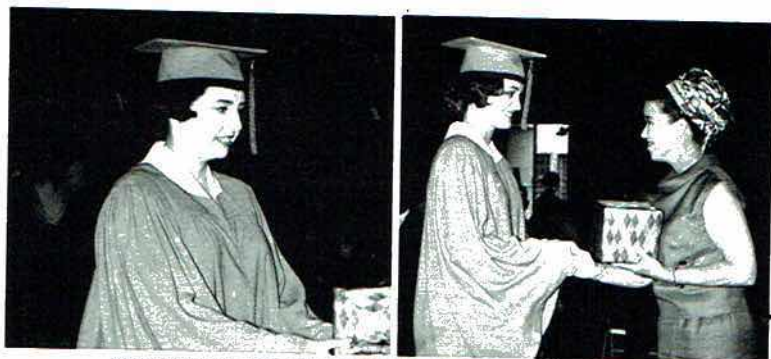
ROTARY SCHOLARSHIPS  
Brenda Combs, Beverly Hancock, Mary Elizabeth Sumner  
BUSINESS EDUCATION - Mary E. Sumner



. . Awards



CIVITAN AWARD-SCIENCE AWARD  
Lewis Page



FORTNIGHTLY BOOK CLUB-HOME ECONOMICS  
Mary Ann Matthews - Rosa Reid



AMERICAN LEGION AWARD  
Susan Gentle



AMERICAN LEGION AWARD  
Mickey Stewart



"S" CLUB SCHOLARSHIP  
Larry Smart



ATHLETIC AWARD  
Clyde Butler



LIONS' CLUB SCHOLARSHIP  
Roger Junior



BETTY CROCKER HOMEMAKER  
Joyce Loyd  
CRISCO AWARD  
Sue Neyman



# *Juniors*



## *Junior Class Officers*

President----- Tommy Perkins

Secretary----- Linda Page

Vice President----- Larry White

Treasurer----- Linda Bass



Judy Dawson  
 Larry Dawson  
 Linda Dawson  
 Billy Joe Dobbins  
 Ronald Dolberry



Linda Dudley  
 Patty Eakin  
 Shirley Eakin  
 Carolyn Edwards  
 Mickey Elliott



Claude Evett  
 Brenda Evett  
 Hank Frazier  
 David Gamble  
 Ferrel Gass



Clifford Gilliam  
 Janice Goins  
 Leonard Gray  
 Jenny Green  
 Bobby Grider

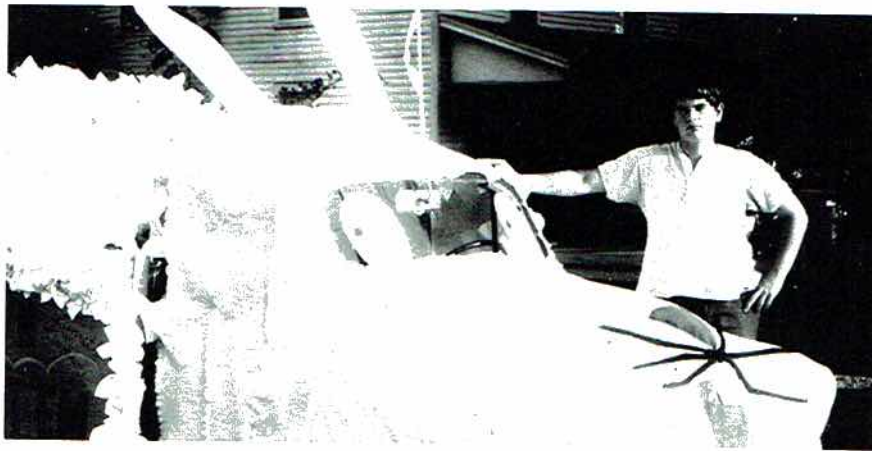


Linda, do you dress like this all the time?

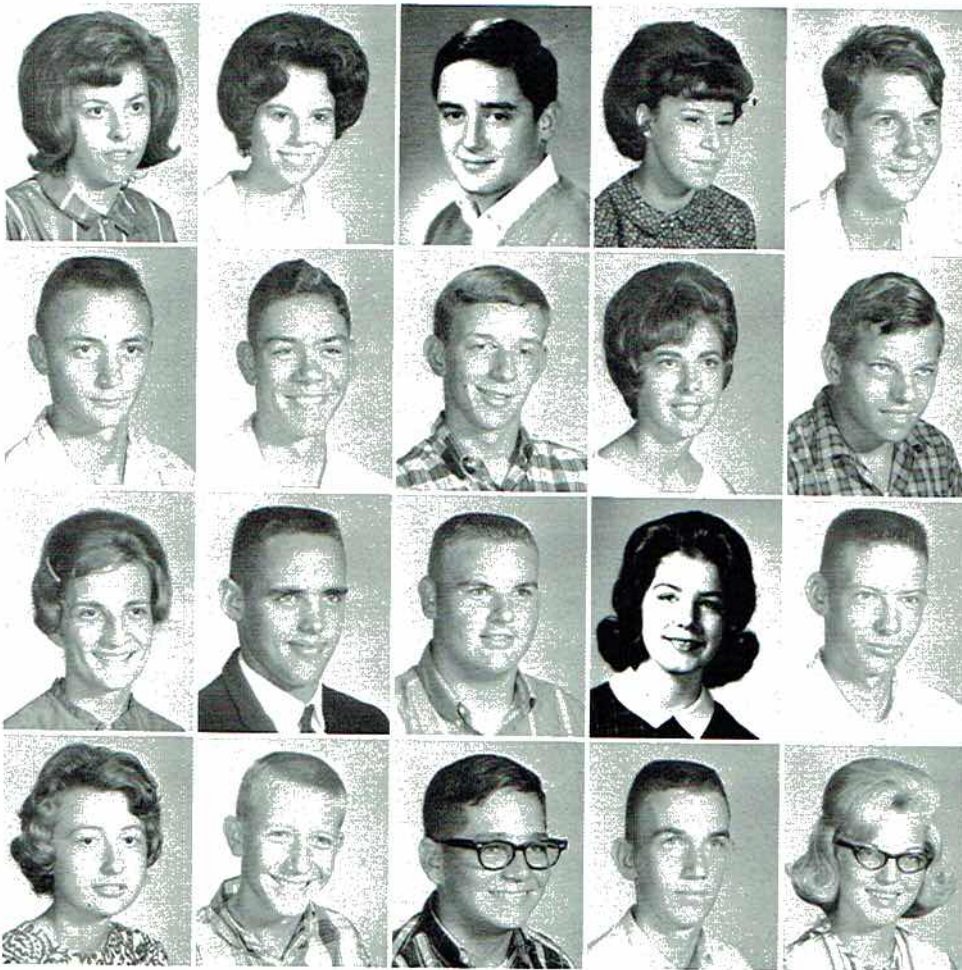


Ferrel and Billy say speech is informative, worthwhile and educational!??





Roger? You still believe in bunny rabbits?



Diane Grider  
Reginia Grider  
Frank Haas  
Peggy Hambrick  
Gary Hammon

Miles Hammons  
Ronnie Hart  
Bobby Hastings  
Helen Hastings  
Elmer Hayes

Martha Helms  
Robert Hester  
Kenneth Higginbotham  
Haden Hodges  
Jesse Hoge

Mabel Hoge  
Emmet Holder  
Robert Hooks  
Jones Holt  
Betty Rose Hurt



Faye Jackson  
 Paulette James  
 Claude Judge  
 Danny Johnston  
 Diana Jones



Sherry Jones  
 Charles Keel  
 Carol Keller  
 Larry Kirkland  
 Woody Lansford



Doyle Ledbetter  
 Jerry Ledbetter  
 JoAnn Lindsay  
 Janet Little  
 Celia Long



Mildred Lusk  
 Paul Lusk  
 Nancy Lynch  
 Edna Marsh  
 Sylvia Martin

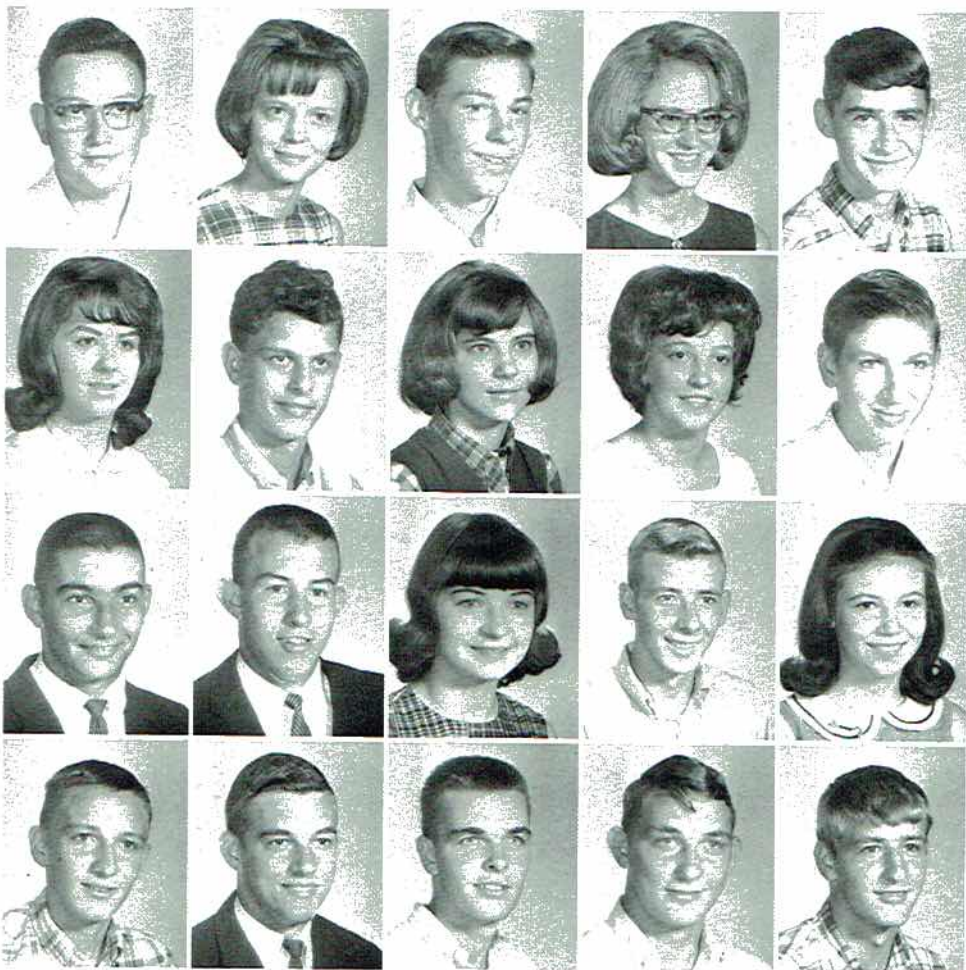


"Susan, do you, Martha,  
 and Paulette get a kick  
 out of this?"





Juniors work hard making money for the Junior-Senior prom.



Jimmy Matthews  
Joan McAllister  
Bill McCamy  
Carol McCrary  
Danny McCrary

Debra Merritt  
Leonard Miller  
Linda Miller  
Wanda Miller  
Gary Morris

Keith Murner  
Billy Nichols  
Linda Otinger  
Billy Earl Pace  
Linda Page

George Parks  
Tommy Perkins  
Jesse Perry  
Marvin Phillips  
Thomas Phillips



Roger Pierce  
 George Pipes  
 Randy Pittman  
 Glenn Primm  
 Larry Proctor



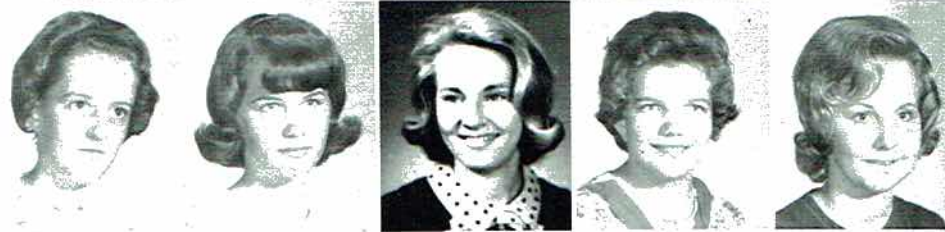
Reginald Poe  
 Jackie Poland  
 Shirley Porter  
 Jim Potter  
 Linda Roberts



Beuna Rodgers  
 Rodney Rodgers  
 Thomas Saint  
 Linda Sanders  
 Steven Sherwood



Debbie Simmons  
 Patricia Simmons  
 Betty Sisk  
 Ina Mae Sisk  
 Judy Smith

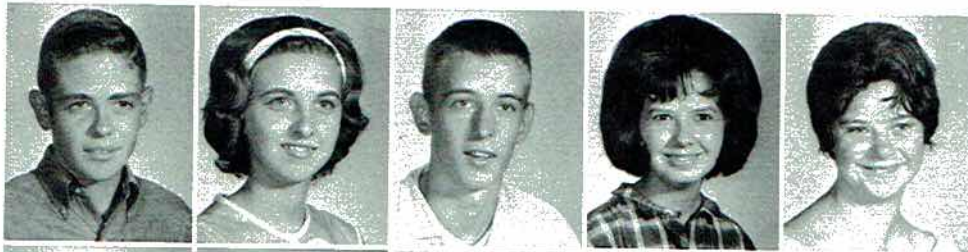


"Eating is a favorite pastime for these junior students."



"Juniors work diligently on their studies."





Bruce Stewart  
Janie Swaim  
Bobby Talley  
Linda Sue Talley  
Audrey Tate



Betty Tidwell  
James Tidwell  
John Paul Timberlake  
Joyce Treece  
Charles Utter



Alvis Wales  
Patricia Walker  
Faye Warren  
Jerry Webb



Paul Weeks  
Arnold Wheeler  
Larry White  
Jim Wilborn  
Susan Wilkinson



Patricia Williams  
Charles Wilson  
Tommy Wilson  
Gerald Winiger  
Billy Wright



Donald Wright  
Betty Womack  
Kay Wynn  
Doris York  
Anita McNelley



# *Sophomores*



## *Sophomore Class Officers*

President - - - - - Brad Bradford

Vice-President - - - - - Bill White

Secretary-Treasurer - - - - Ray Simmons



George Allen  
 J. W. Allen  
 Betty Arnold  
 Hunter Arnold  
 Linda Bankston



Jerry Bell  
 Richard Blackwell  
 Sharron Boozer  
 Jimmy Bramblett  
 Brad Bradford



Charles Bradford  
 Buford Brandon  
 Becky Brandon  
 Freida Brandon  
 Tommy Brandon



Pat Brazelton  
 Ted Buchanan  
 Betty Sue Bufford  
 Billy Burrow  
 Kenneth Campbell



These Sophomores toured the  
 radio station at Scottsboro.



Pam Campbell, Vann Gable, and Winston Reed.





Pam Campbell  
 Carolyn Chambers  
 Paulette Cisco  
 Brenda Clark  
 Alvin Clemens



Eddie Collins  
 Helen Cornelison  
 Carolyn Davis  
 Rosanna Davis  
 Jimmy Dean



Michael Devers  
 Tommy Dilbeck  
 Jerry Evett  
 Wanda Evett  
 Ann Forrester



Patricia Gamble  
 Frankie Gant  
 Sammy Gant  
 Virginia Gardner  
 Shirley Garner



Robert Lee Gass  
 Shirley Gattis  
 Eddie Gentle  
 Janice Gentle  
 Lonnie Grey



Gerry Griggs  
 Joe Wayne Guffey  
 Patricia Guinn  
 Shelia Guinn  
 Mary Syble Hall



Nancy Hammer  
Belinda Hancock  
Billy Glenn Hardin  
Ronnie Henderson  
Sandra Henegar



Mark Higginbotham  
Richard Higginbotham  
Jim Hill,  
Helen Hoge  
Fred Holder



Larry Holder  
Michael Hollis  
Cathy Ivey  
Donald Jeffery  
Wayne Jeffery



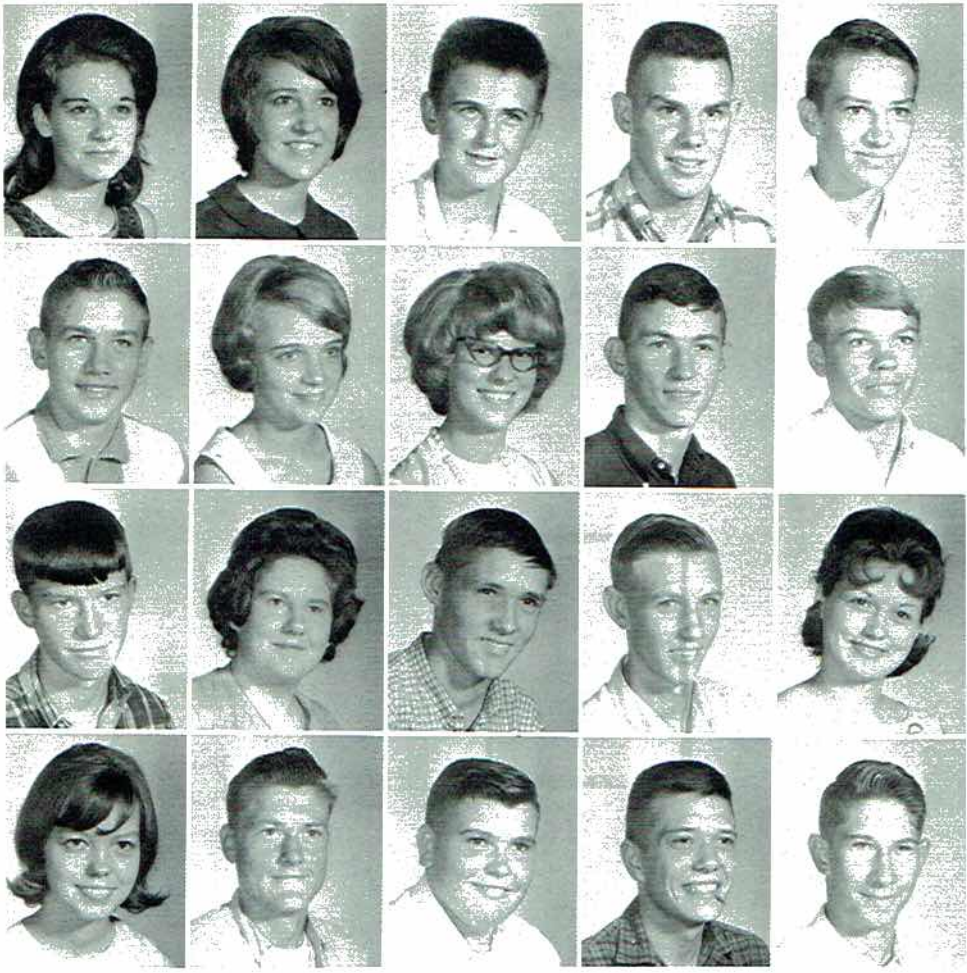
David Johnson  
Keith Johnson  
Ronnie Jones  
Randy Junior  
Connie Keel



Between classes, Sopho-  
mores catch up on the lat-  
est gossip.







Ann Keel  
 Brenda Kaye Keeton  
 Joe Ed Keller  
 Robert Wayne Kilgro  
 Darrell Latham

Randy Latham  
 Nora Lee Ledwell  
 Linda Light  
 Mike Linville  
 Jimmy Long

Rickey Long  
 Janice Lowe  
 Larry Dwaine Lusk  
 Bruce Manning  
 Joan Manning

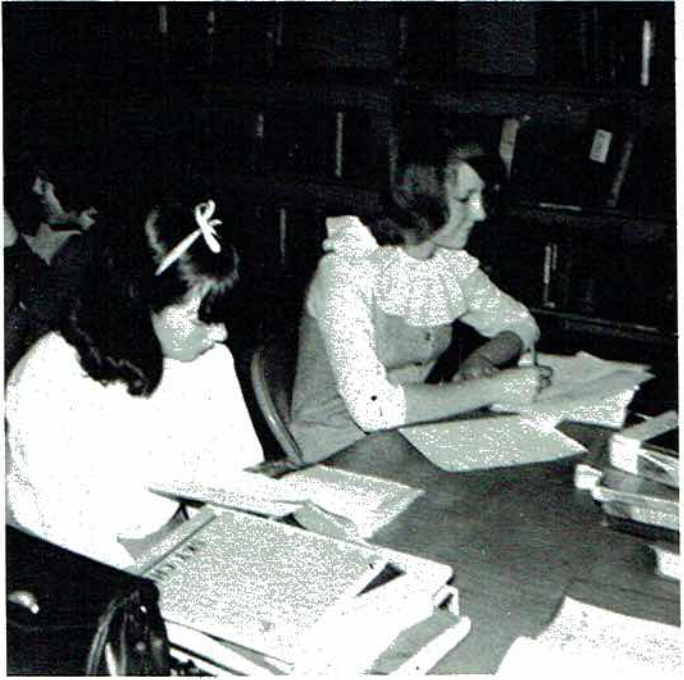
Cathy Martin  
 Larry Martin  
 Kenneth Matthews  
 Albert Maynor  
 Eugene McCarver

Shan  
 Ter  
 Den  
 Jerry  
 Lind

Phyl  
 John  
 Gail  
 Rand  
 Wan

Fred  
 Eddy  
 Paul  
 Rich  
 Pam

Tim  
 Glen  
 Tom  
 Wins  
 Jane



The Sophomores take advantage of the Library.





Shannon McBride  
 Teresia McClure  
 Dennie McCrary  
 Jerry McCrary  
 Lindell McCuthen



Phyllis Middleton  
 John Miller  
 Gail Moore  
 Randy Moore  
 Wanda Necklaus



Freda Noblitt  
 Eddy O'linger  
 Paul O'neal  
 Richard Payne  
 Pamela Pence



Tim Poole  
 Glenda Potter  
 Tommy Precise  
 Winston Reed  
 Jane Rice



The Sophomores look forward to the day when they will receive honors.





Mickey Roberts  
Keith Rodgers  
Charlotte Rogers  
Kenneth Ray Saint  
Janet Scroggins



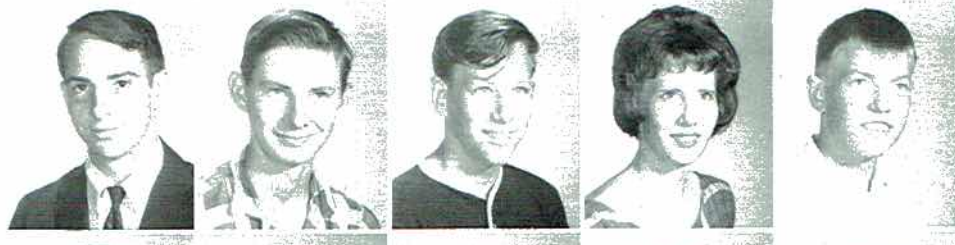
Glenda Seabolt  
Linda Seabolt  
Juan Selby  
Yvonne Selby  
Gail Sharp



Patsy Sharp  
Gwen Sheppard  
Kenneth Shrader  
Ray Simmons  
Scott Skelton



Suzanne Sloan  
Brenda Smart  
Larry Smith  
John Southard  
Michael Staton



Paul Stevenson  
Bruce Swain  
Roy Swearingin  
Mildred Talley  
Philip Tanner



Donald Thomas  
Diane Thompson  
Sandra Wade  
Bill Walden  
Douglas Ward

Rich  
Ger  
Gle  
Loi  
Sus

Bill  
John  
Lin  
Bre  
Jim

Ros  
Car  
Lin  
Reb  
Bob

Bra  
Lar  
Reb  
Cat



Richard Weavil  
Gene Webb  
Glenn Webb  
Lois Faye Weeks  
Susie Weeks



Billy Wayne White  
John William White  
Linda White  
Brenda Wilborn  
Jimmy Wilson



Rosie Wilson  
Carol Winger  
Linda Winger  
Reba Womack  
Bobby Woosley



Brad Yates  
Larry York  
Reba Sue Young  
Cathy Ray



The Sophomores learn the fundamentals of basketball.





Senior, Charles Derrick, believes in promoting student-teacher relationship.



Staff members find a coffee break quite relaxing after selling Annual and Wildcat Ads.



Future D.J.'s of America hold their annual convention at the radio station.

"Sure, Mrs. Davis, let me do it"



A typical hard-at-work senior trig class!



Our principal, Mr. Collins, has his own special way of saying things!!!!



Sophomores, Mike and Nancy, find that studying is very important at SHS.





## *Organizations*





Clyde Butler, Tommy Stevenson, Larry Ward, Mrs. Sanders, Linda Page, Ray Simmons, Nancy Collins, Sue Ellen Harris, Beverly Hancock, Linda Bass, George Parks, Brad Yates, Susan Gentle, Freida Brandon, Cathy Ray, Susan Wilkinson, Tommy Perkins, Brad Bradford, Richard Paine, Bruce Stewart, Larry White, Glenn Hardin, Terry Eakin, Charles Adams (not pictured), Keith Murner (transferred).

## *Student Council*



### OFFICERS

President----- Clyde Butler  
 Vice-President----- Linda Page  
 Secretary-Treasurer----- Larry Ward  
 Chaplain----- Tommy Stevenson  
 Sponsor----- Mrs. Sanders





MEMBERS: Lewis Page, Rita Rudder, Rosa Reid, Susan Gentle, Joyce Loyd, Larry Ward, James Clemons, Wanda Kennamer, Mickey Stewart, Jerry Judge, Robert Bonner, Beverly Hancock, Sue Ellen Harris, Susan Wilkenson, George Parks, Caroline Weavil, Haden Hodges, Linda Page, Patricia Simmons, Alvis Wales, Larry White, Eddie Akin, Keith Murner, Linda Bass, Sue Neyman, Wayne Edmonds, Nancy Collins.

## National Honor Society



### OFFICERS

President - - - - - Larry Ward  
 Vice President - - - - - James Clemens  
 Secretary - - - - - Wanda Kennamer  
 Treasurer - - - - - Nancy Collins  
 Sponsor - - - - - Mr. Pendergrass





Joyce Loyd, Patricia Simmons, Linda Miller, Nancy Collins, Nancy Lynch, Susan Gentle, Carolyn Richie, Sue Neyman, Mary Rose Clark, Wanda Kennamer, Carol Keller, Hayden Hodges, Ann Carter, Rosa Ried, Linda Bass, Beuna Rogers, Rita Rudder, Beverly Hancock, Sue Ellen Harris, Linda Page, Tommy Stevenson, Linda Chapman, Larry Ward, Wayne Edmonds, Susan Wilkinson, Caroline Weavil, Jan Campbell, Nancy Tate, Sylvia Martin, Brenda Combs, Mrs. Armstrong.

Brad B  
Ann M  
Becky  
Campb  
James,  
Brando  
Nancy

## *Future Teachers of America*

### OFFICERS

President-----Sue Ellen Harris  
 Vice-President----- Linda Page  
 Secretary-----Joyce Loyd  
 Treasurer----- Caroline Weavil  
 Historian----- Nancy Collins  
 Parliamentarian----- Susan Gentle  
 Sponsor----- Mrs. Armstrong







Brad Bradford, Nancy Hammer, Suzanne Sloan, Janice Gentle, Judy Gwathney, Brenda Allen, Janice Kilgro, Mary Ann Matthews, Dorothy Whitehead, Gwen Sheppard, Virginia Matthews, Janet Little, Sara Airheart, Faye Warren, Becky Brandon, Virginia Gardner, Clyde Butler, Donald Webb, Tim Poole, Bill Reedstrom, Clay Peacock, Pam Campbell, Patsy Gamble, Edward Smart, Linda Bankston, Ann Forrester, Mike Williamson, Mickey Selby, Paulette James, Brad Yates, Bill McCamy, Porky Holder, Scott Skelton, Van Gable, Carolyn Culver, Karen Fossett, Diane Brandon, Brenda Smart, Randy Junior, Mike Hollis, Charlotte Rogers, Wanda Necklaus, Patsy Berry, Linda O'tinger, Nancy Sisk, Glenda Potter, Deborah Merritt, Joan McAlister, Judy Smith, and Linda Seabolt.

## *Medical Careers Club*

### OFFICERS

President----- Clay Peacock  
 Vice-President-----Brad Bradford  
 Secretary----- Paulette James  
 Treasurer----- Pam Campbell  
 Sponsor-----Mrs. Allen







*Future Homemakers of America*



1965-66

OFFICERS

- President----- Sue Neyman
- Vice-President----- Rosa Reid
- Secretary----- Linda Porter
- Treasurer----- Joyce Loyd
- Historian----- Carolyn Richie
- Parliamentarian----- Judy Gwathney
- Reporter----- Rita Rudder
- Photographer----- Ann Carter
- Sponsors----- Mrs. Doran Ingram  
Mrs. W. W. Matthews







OFFICERS

- President----- Wayne Edmonds  
 Vice-President----- Ronald Atchley  
 Secretary----- Floyd Vaught  
 Treasurer----- Ronnie Hart  
 Reporter----- Gerald Edmonds  
 Sentinel----- Russell Atchley  
 Sponsor----- Mr. Hopper







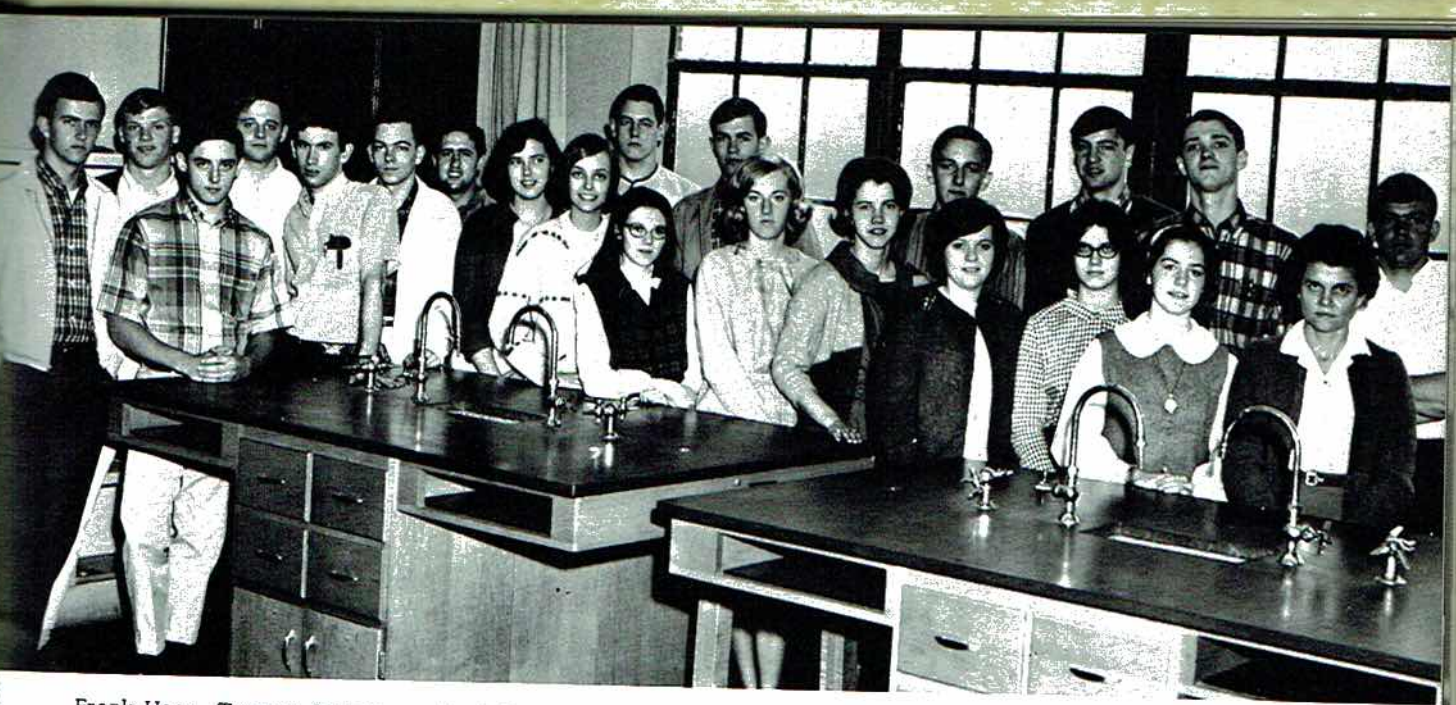
Richie, Gentle, Bufford, Sheppard, Smart, Culver, Amos, Evett, Hammer, B. Brandon, Smith, Williams, Lynch, Meritt, Little, Cash, McClure, M. Selby, J. Selby, Womack, Sisk, L. Seabolt, G. Seabolt, Fossett, Gable, Tate, Watts, Brazelton, B. Womack, Potter, P. Campbell, Kirkland, Hall, Gwathney, O'Tinger, Kent, Davis, Warren, Hart, D. Brandon, C. Rodgers, Airheart, Brooks, Boozer, J. Campbell, Hodges, J. Wilborn, Martin, Sharpe, Webb, B. Rodgers, Weavil, Holder, Cruce, Kennamer, Greene, L. Potter, Dawson, L. Ivey, Isbell, C. Ivey, Hurt, Wynn, Neyman, James, Miller, Chambers, Garner, Kirby, Gladish, Keasling, Kilgro, Allen, P. Gamble, Killingsworth, Keller, Wales, and B. Wilborn

## *Library Club*



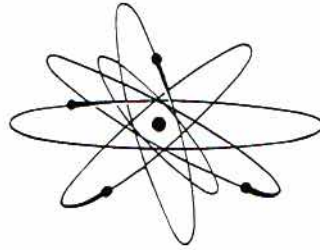
- President - - - - - Sue Cash
- Vice-President - - - - - Virginia Green
- Secretary - - - - - Savannah Isbell
- Treasurer - - - - - Dianne Brandon
- Sponsor - - - - - Mrs. Heath





Frank Haas, Tommy Stevenson, Hank Frazier, Clay Peacock, Edward Smart, Mickey Stewart, Alvis Wales, Linda Page, Betty Sisk, Janice Gross, Susan Gentle, Sylvia Martin, Haden Hodges, Charles Kennamer, Mike Williamson, Bill Reedstrom, George Parks, Jim Wilborn, Roger Junior, Lanell Amos, and Buena Rogers.

*Science*



*Club*

OFFICERS

- President - - - - - Susan Gentle
- Vice-President - - - - - Mickey Stewart
- Secretary - - - - - Linda Page
- Treasurer - - - - - George Parks
- Parliamentarian - - - - - Bill Reedstrom
- Reporter - - - - - Tommy Stevenson
- Sponsor - - - - - Mrs. Lee







Laura Atkins, Earl Bishop, Robert Coulson, Otis Jeffery, George Lewis, George Pipes, Jim Potter, Jimmy Renslow, Nancy Walker, Larry Dean, Gordon Tubbs, Lewis Chance, Terry Eakin, Carolyn Edwards, Bettye Hall, Larry Nippers, Carolyn Smith, Kenneth Turner, Billy Wright, Thomas Saint, Tommy Chandler, Judy Dawson, Miles Hammon, Lila Harris, Helen Hastings, Jessie Hoge, Charles Keel, Larry Mitchel, Sue Tally, Sandy Wann, Leonard Miller, Diane Jones, Carol Burch.

Linda B...  
bins, C...  
ice Go...

## V.I.E. Club

Distrib...  
selling...  
field in...  
home f...  
the reta...  
traffic...

### OFFICERS

- President - - - - - Terry Eakin
- Vice-President - - - - - Bettye Hall
- Secretary - - - - - Tommy Chandler
- Treasurer - - - - - Otis Jeffery
- Reporter - - - - - Laura Atkins
- Sponsor - - - - - Mr. J. R. Porch







Linda Bradford, Billie Kate Morris, Nancy Jane Swaim, Brenda Day, Judy Killingsworth, James Tidwell, Billy Joe Dobbins, Carlos Woosley, Ray Bass, Tommy Manning, Bobby Eastham, Mrs. Broome. Not Pictured: William Utley, Janice Goins.

## *Distributive Education*

Distributive Education is a vocational training program for students employed in retailing, wholesaling, or service-selling businesses. This course is designed for students who are interested in the field of distribution as a career. The field includes such specific job categories as buying and selling drugs, cosmetics, dry goods, groceries, hardware, home furnishings, wearing apparel, musical instruments, toys, automotive supplies, and fashion merchandise. Within the retail field, distributive education may provide on-the-job training in credit, advertising, display, personnel, or traffic procedures.



- President - - - - - Bobby Eastham
- Vice President - - - - - Ray Bass
- Secretary - - - - - Judy Killingsworth
- Reporter - - - - - Carlos Woosley
- Sponsor - - - - - Mrs. Broome



The majorettes of the 1965-66 season are proud of their trophies. They are Haden Hodges, Beth Collins, Linda Bankston, Virginia Gardner, Suzanne Sloan, and Sue Neyman.

## Majorettes 1965-66



LINDA BANKSTON  
Sophomore



SUE NEYMAN  
Senior Head



HADEN HODGES  
Junior



VIRGINIA GARDNER  
Sophomore



BETH COLLINS  
Freshman



SUZANNE SLOAN  
Sophomore





**BAND OFFICERS**

Lewis Page, Wanda Kennamer, Eddie Ray Austin, Jimmy Bramblett



**DRUM MAJOR**  
Alvis Wales



**COLOR GUARD**

Bill Reedstrom, Carol Keller, Pam Petty, Wayne Murry



**BAND DIRECTOR**  
Mr. Jack Cox



**BAND BANQUET**



**ALL STAR BAND MEMBERS**  
George Parks, Wanda Kennamer, Jimmy Bramblett





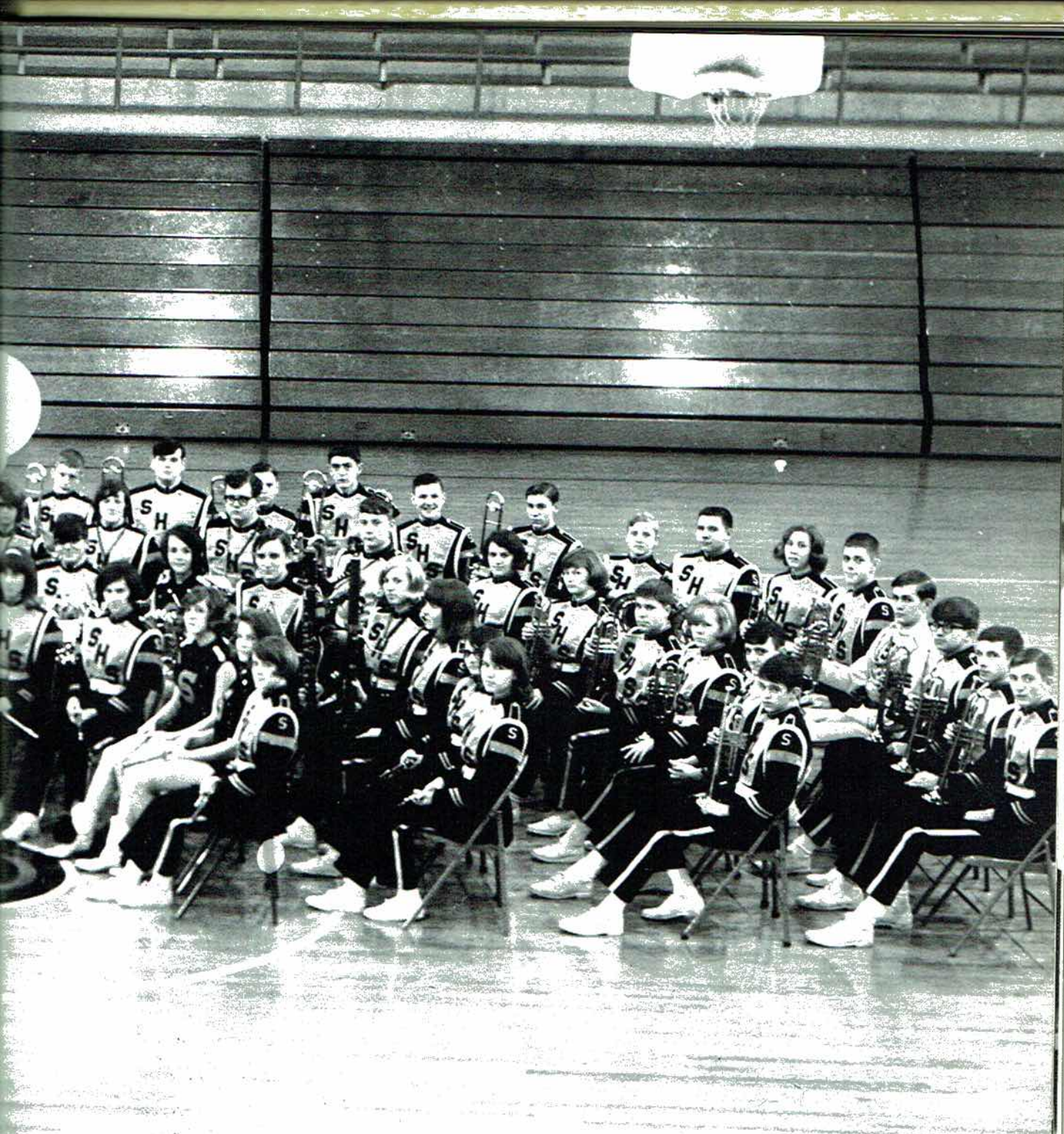
CLARINETS: Kay Akin, Beverly Barclay, Beth Collins, Carol Cordell, Nancy Cunningham, Martha Downey, Linda Farmer, Virginia Gardner, Patricia Green, Beverly Hancock, Sue Ellen Harris, Sandra Henegar, Martha Hooper, Deborah Johnson, Carol Keller, Janice Nelson, Charlotte Rogers, Suzanne Sloan, Betty Sisk, Bill Tally, Terri Thomas, Linda White, Pam Wilhelm.

FLUTES: Linda Bankston, Freida Brandon, Haden Hodges, Wanda Kennamer, Sue Ellen Machen, Glenda Potter.

SAXOPHONES: Martha Neyman, Patsy Berry, Buddy Darwin, Larry Gattis, Sylvia Martin.

TRUMP  
 les Mar  
 DRUMS:  
 TROMB  
 HORNS:  
 OBOES:  
 ALTO A  
 BASS A





TRUMPETS: Randy Airheart, Eddie Ray Austin, Diane Bellomy, Jimmy Bramblett, Jim Clark, Tommy Dilbeck, Charles Marsh, Shannon McBride, Dick Patrick, Vince Pearson, Brenda Phillips, Alvis Wales, Jr.

DRUMS: Van Gable, Jerry McClendon, Dennis McCrary, Danny McCrary, L. J. McLemore, Tim Poole.

TROMBONES: Bill McCamy, Gary McBride, Robert Lee, Winston Reed, Tommy Underwood.

HORNS: George Parks, Sue Neyman, Randy Junior, Mike Thorton.

OBOES: Patricia Simmons, Janice Clemons.

ALTO AND BASS CLARINET: Brenda Smart, Sue Thompson, Nancy Hammer, Cathy Ray, Becky Brandon.

BASS AND BARITONES: David Bradford, Jimmy Webb, Terry Neeley, Mike Hollis.





Rita Rudder, Mrs. Wallinsford, Nancy Collins, Linda Chapman, Jackie Poland, Jan Campbell, Carlos Woosley, Sue Ellen Harris, Faye Warren, Tommy Stevenson, Wanda Kennamer, Nancy Tate, Ann Carter, Sue Neyman.

## *Wildcat Staff*



Editor-in-Chief Rita Rudder and Assistant Editor-Nancy Collins.



REPORTERS

Jackie Poland, Ann Carter, Faye Warren.

BUSINESS MANAGER - Sue Ellen Harris; ADVERTISING MANAGER - Linda Chapman; PAGE EDITORS - Tommy Stevenson, Nancy Tate, Jan Campbell, Ann Carter; SPORTS - Carlos Woosley; FEATURES - Sue Neyman SPONSOR - Mrs. Margaret Wallingsford





Larry Smart, Charles Adams, Clyde Butler, Clay Peacock, Hank Frazier, Charles Derrick, Mike Williamson, Kermit  
 lton, Mickey Stewart, Glenn Williams, Donald Webb, Ronald Atchley, Russell Atchley, Albert Carlton, David An-  
 rson, Billy Ray Webb, Robert Hester, Tommy Perkins, Billy Nichols, Robert Bonner, Eddie Eakin, Ferrell Gass, Dus-  
 Cash, Gary McBride, Charles Wilson, Billy Woosley, Jerry Judge, Diane Brandon, Rita Rudder, Linda Miller, Patsy  
 mble, Rosa Reid, Nancy Collins, Linda Chapman, Ann Forrester.

## "S" Club

### OFFICERS

- President - - - - - Mickey Stewart
- Vice-President - - - - - Larry Smart
- Secretary - - - - - Billy Ray Webb
- Treasurer - - - - - Jerry Judge
- Program Committee - - - - - Donald Webb  
 Glenn Williams  
 Charles Adams







NANCY COLLINS  
Senior



ROSA REID  
Senior Head



RITA RUDDER  
Senior



ANN FORRESTER  
Sophomore Alternate

*Wildcat  
Cheerleaders  
1965-66*



DIANE BRANDON  
Junior Alternate



LINDA MILLER  
Junior



PATSY GAMBLE  
Sophomore



LINDA CHAPMAN  
Junior





## *Pep Club*

### OFFICERS

President - - - - - Nancy Tate  
Treasurer - - - - - Carlos Woosley  
Sponsor - - - - - Mrs. Sloan





# Reminder Staff



Stevenson, Collins, Mrs. Broome, Harris, Carter, Woosley, Tate, Poland, Kennamer, Neyman, Campbell, Warren, Rudder, Chapman.



Senior Class Editors - Jan Campbell and Tommy Stevenson; Junior Class - Linda Chapman; Sophomore Class - Faye Warren.



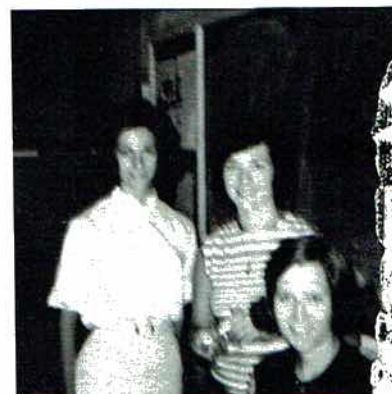
Business Managers - Wanda Kennamer and Nancy Tate



Editor-in-Chief Sue Ellen Harris and Associate Editor - Nancy Collins



Sports Editors - Carlos Woosley and Jackie Poland.



Organizations - Ann Carter and S. Neyman; Features - Rita Rudder





FIRST DEBATE TEAM: Lewis Page, George Parks, Hank Frazier, and Larry White

## *SHS Debate Team*

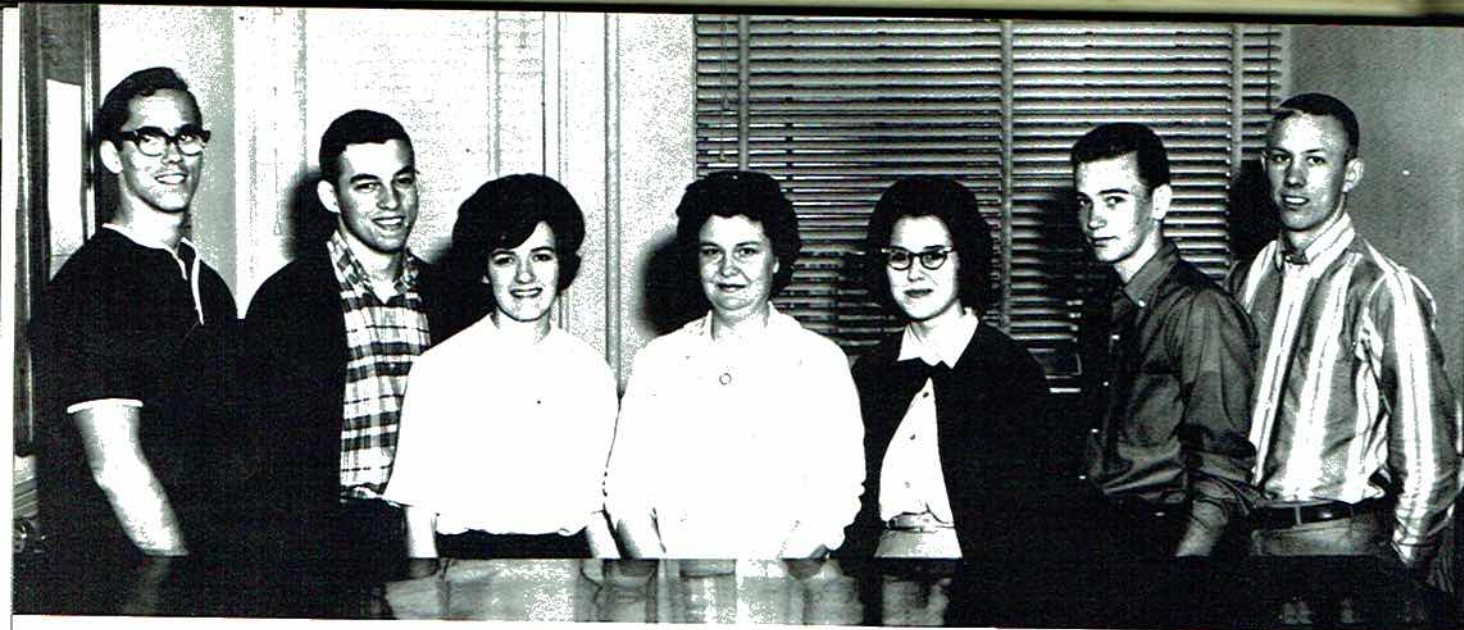


SECOND TEAM: Bruce Stewart, Mike Hollis, Nancy Lynch, and Patsy Berry



SPECIAL EVENTS: Sue Neyman, Sara Airheart, Sponsor...Mrs. Stevenson





OFFICE: Robert Bonner, Tommy Perkins, Leah Watts, Mrs. Nelson, Rosie Wilson, Donald Thomas, Donald Webb.

## *SHS Assistants*



LIBRARY: Diane Jones, Jean Rodgers, Nora Ledwell, Nancy Cornelison, Lenell Ames, Gwen Sheppard, Linda Ivey, Betty Womack, and Brenda Evett.

LAB ASSISTANT: Doyle Ledbetter





*Features*





S



*Homecoming Queen*

RITA RUDDER





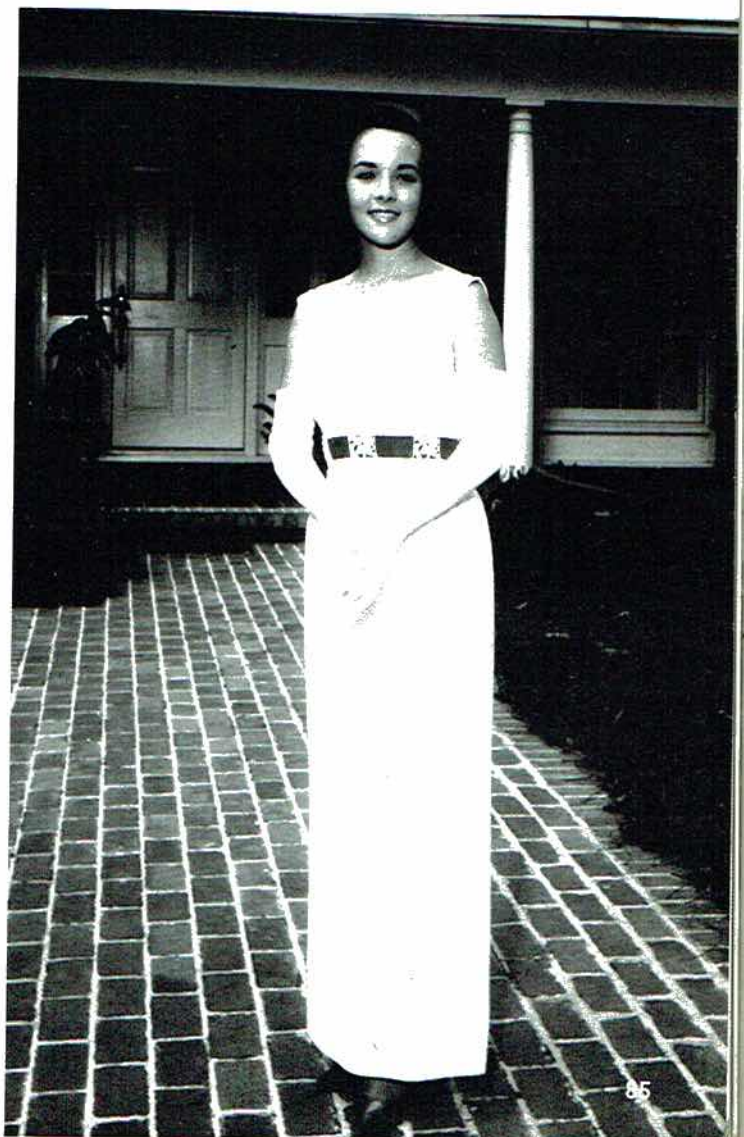
*Sophomore Attendant*

VIRGINIA GARDNER



*Senior Attendant*

SUE NEYMAN



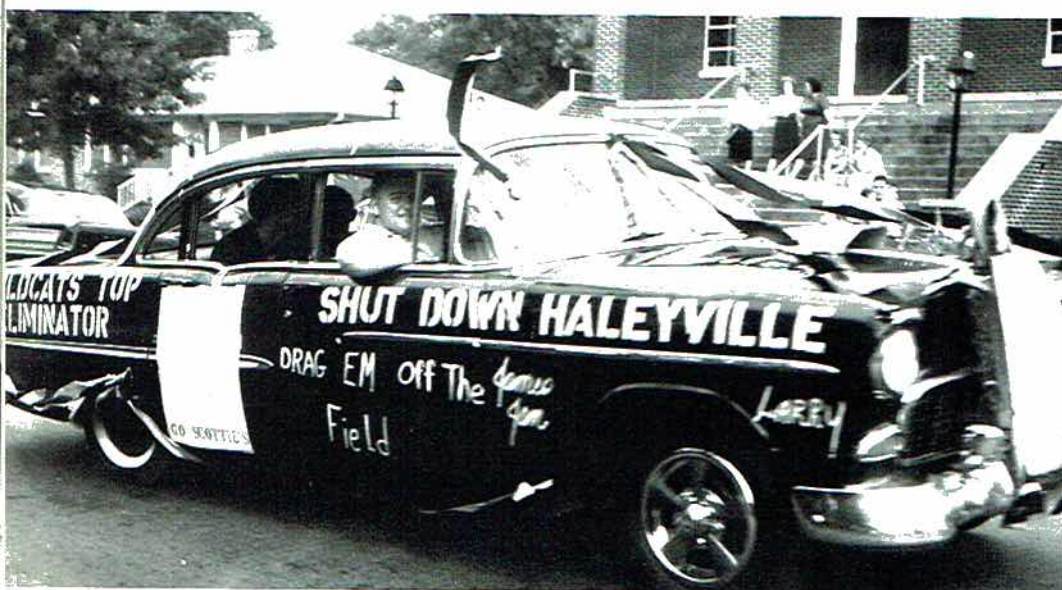




Library Club takes first place, Theme: Win by Heck

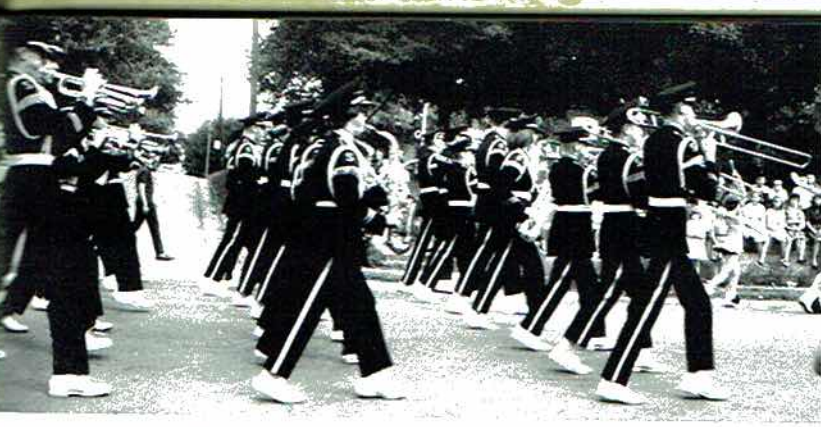


Student Council honors Homecoming Court



First prize-winning car





SHS Band leads Homecoming Parade



Junior Class float, Theme: Tame the Lions



Cheerleaders add spirit to the parade.



Senior Class float, Theme: Bond the Lions





*Senior  
Who's Who  
Best All Around*

RITA RUDDER - LARRY WARD

*Most Studious*

WANDA KENNAMER - JAMES CLEMENS



*Neatest*

CAROLINE WEAVIL - BOBBY EASTHAM



*Most Considerate*

SUSAN GENTLE - BILLY RAY WEBB



*Prettiest and  
Most Handsome*

SUE NEYMAN - MIKE WILLIAMSON



*Friendliest*

SAVANNAH ISBELL - LARRY SMART



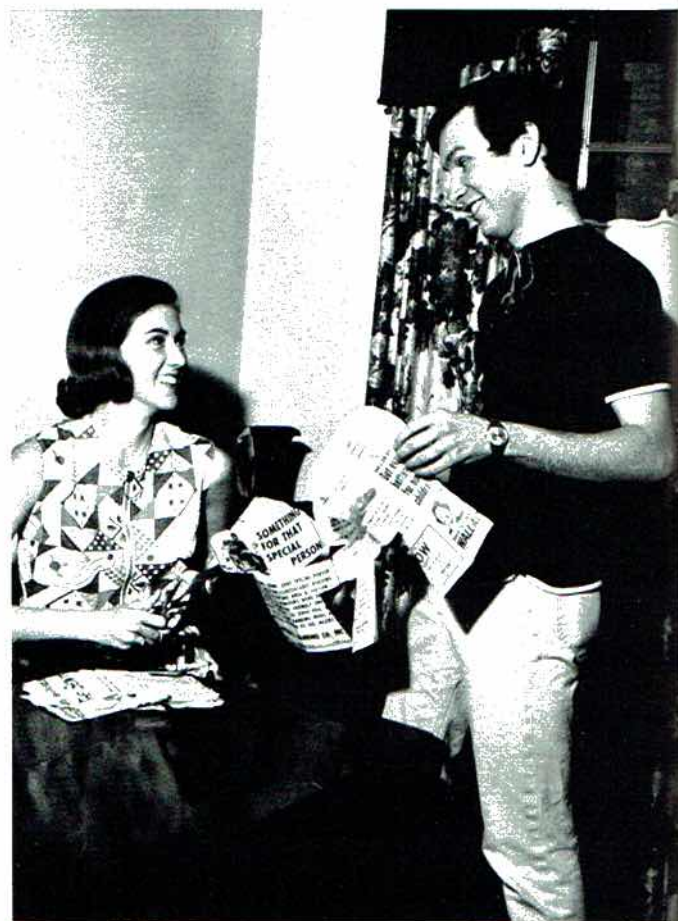


*Most Dependable*

NANCY COLLINS - ROBERT BONNER

*Most Original*

JOYCE LOYD - TOMMY STEVENSON



*Most Likely to Succeed*

SUE ELLEN HARRIS - CLYDE BUTLER



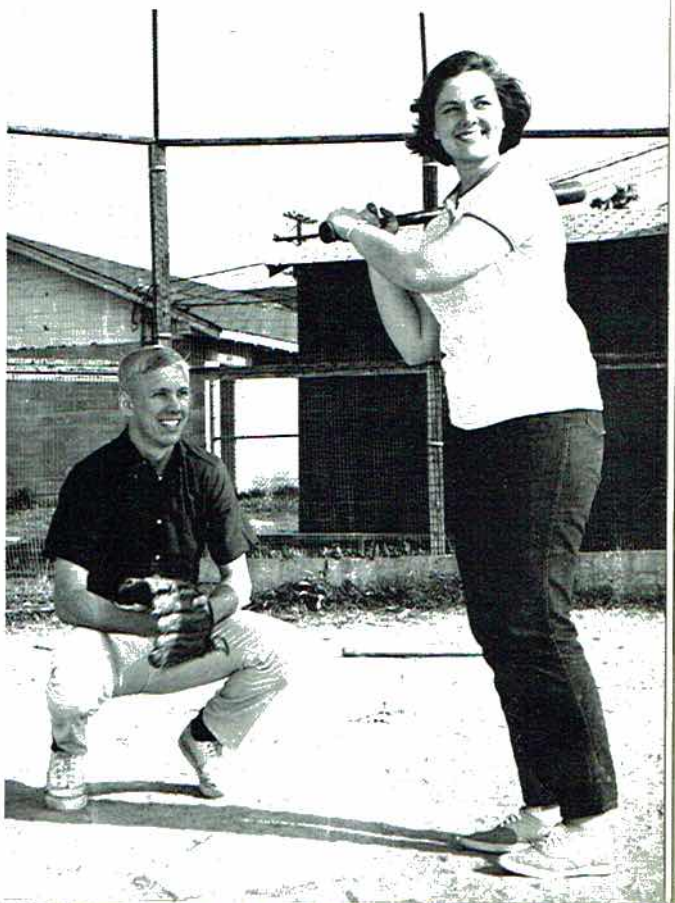
*Most Talented*

MARY ANN MATTHEWS - LEWIS PAGE



*Most School Spirit*

ROSA REID - CARLOS WOOSLEY



*Most Athletic*

NANCY TATE - DONALD WEBB





*Miss SHS*

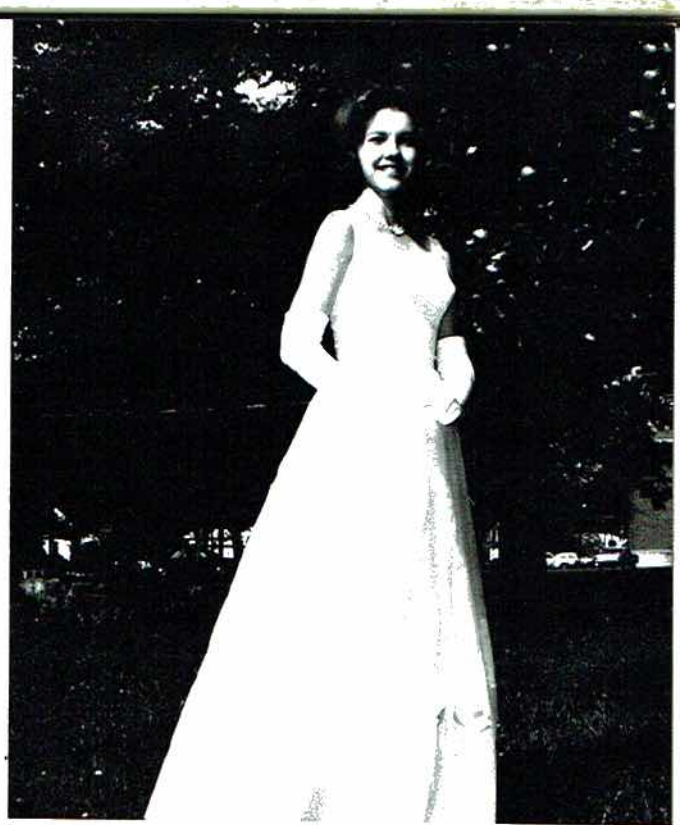
SUE NEYMAN





*1st Runner-Up*

Haden Hodges



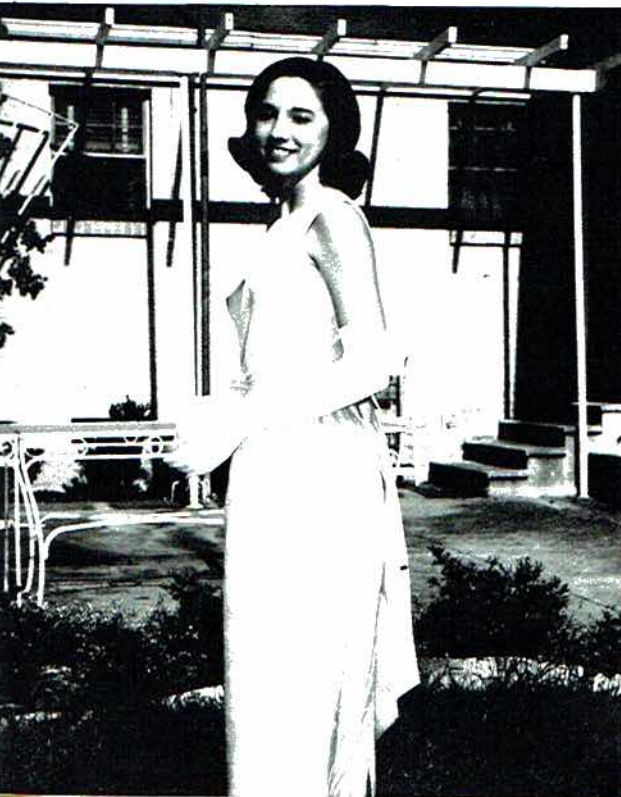
*2nd Runner-Up*

Janice Gross

*Miss S.H.S. Alternates*

*3rd Runner-Up and  
Miss Congeniality*

Carolyn Richie



*4th Runner-up*

Betty Sisk





## Class Favorites

### Senior

LARRY SMART - RITA RUDDER



### Junior

NANCY LYNCH - JERRY CHRISMAN

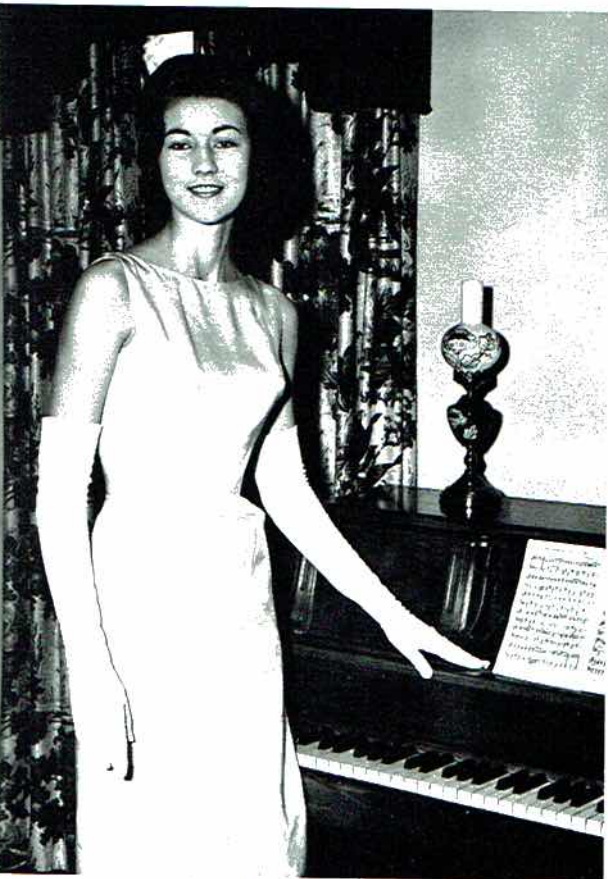


### Sophomore

VIRGINIA GARDNER - BRAD BRADFORD



*Miss FHA and Attendants*



JOYCE LOYD



*Miss FHA*

RITA RUDDER

CAROLYN RICHIE







NANCY

*FHA and FFA Sweethearts*

RONALD ATCHLEY - LINDA PORTER

*Mr. and Miss D.O.*

OTIS JEFFERY - BETTYE HALL



*Band Sweethearts*

LEWIS PAGE - SUE NEYMAN



*Prom Queen and King*

RITA RUDDER - GLENN WILLIAMS



FHA Stat  
Carolyn E



PATRI



# Honors



NANCY COLLINS - Good Citizenship Girl



CLYDE BUTLER and ROBERT BONNER - Outstanding Leaders



FHA State Degrees: Brenda Allen, Linda Otinger, Carolyn Robertson, Sue Cash, Rita Rudder, Carol Cordell, Carolyn Richie, Linda Porter, Leah Watts



PATRICIA SIMMONS - Spanish Award



LINDA PAGE - Music Award

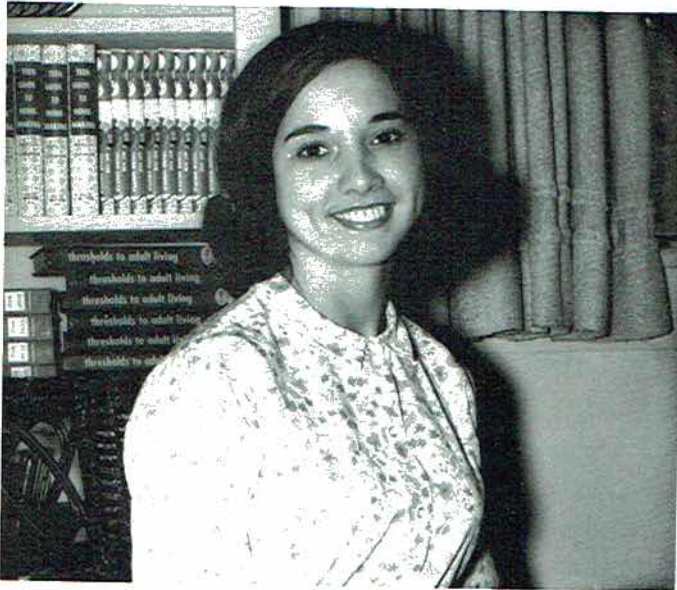




**BILL REEDSTROM**  
National Merit Scholarship Finalist



**WANDA KENAMER**  
National Merit Scholarship Finalist  
Most Outstanding Senior Band Member



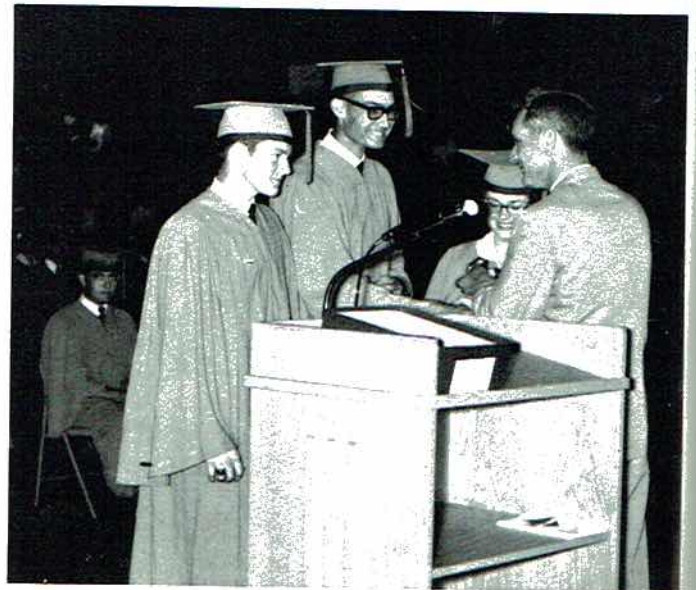
**CAROLYN RICHIE**  
McCalls Teen Fashion Board Member



**JOYCE LOYD**  
Betty Crocker Homemaker of Tomorrow



**EDDIE AKIN**  
American History Award



12 Years Perfect Attendance  
Dale Jones, Gerald Edmonds, Virginia Matthews





Test Your Best Panel: Bill White (alternate), Larry White, Larry Ward, Lewis Page



GIRL'S STATE  
Linda Bass



George Parks



BOY'S STATE  
Alvis Wales



Larry White



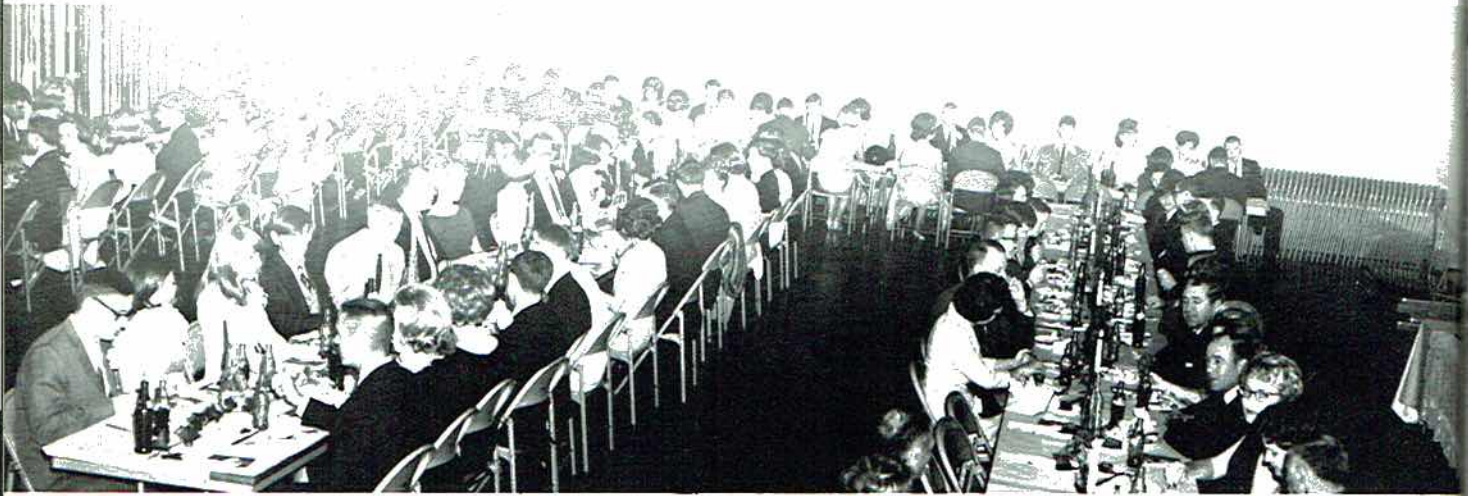
Assistant Editor of The Reminder and The Wildcat - Nancy Collins; Editor of The Reminder - Sue Ellen Harris; Editor of The Wildcat - Rita Rudder; Business Manager of The Reminder - Wanda Kennamer

GOLD SEAL AWARD - Wanda Kennamer

SILVER SEAL AWARD - Clyde Butler, Brenda Combs, Susan Gentle, Beverly Hancock, Ann Jacobs, Joyce Loyd, Sue Neyman, Lewis Page, Caroline Weavil.



# Snapshots



The Band Banquet



Coach "Bear" Bryant speaks at the annual football banquet.

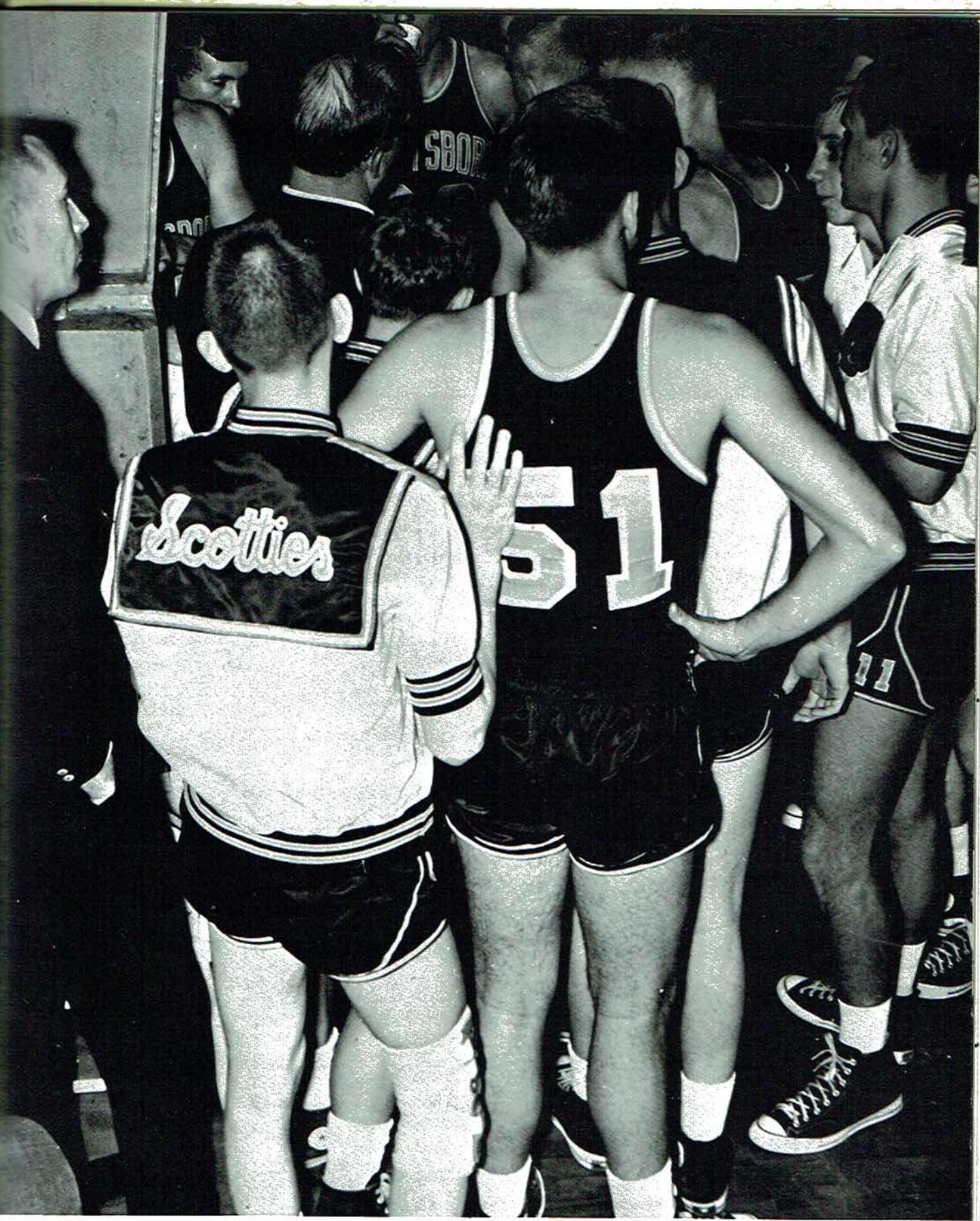


"Crime doesn't pay" is seen by Pam Petty in Twirp Court.



Test Your Best panel as they perform at Auburn





*Sports*





COACH DOUG STYLES



HEAD COACH JOHN MEADOWS

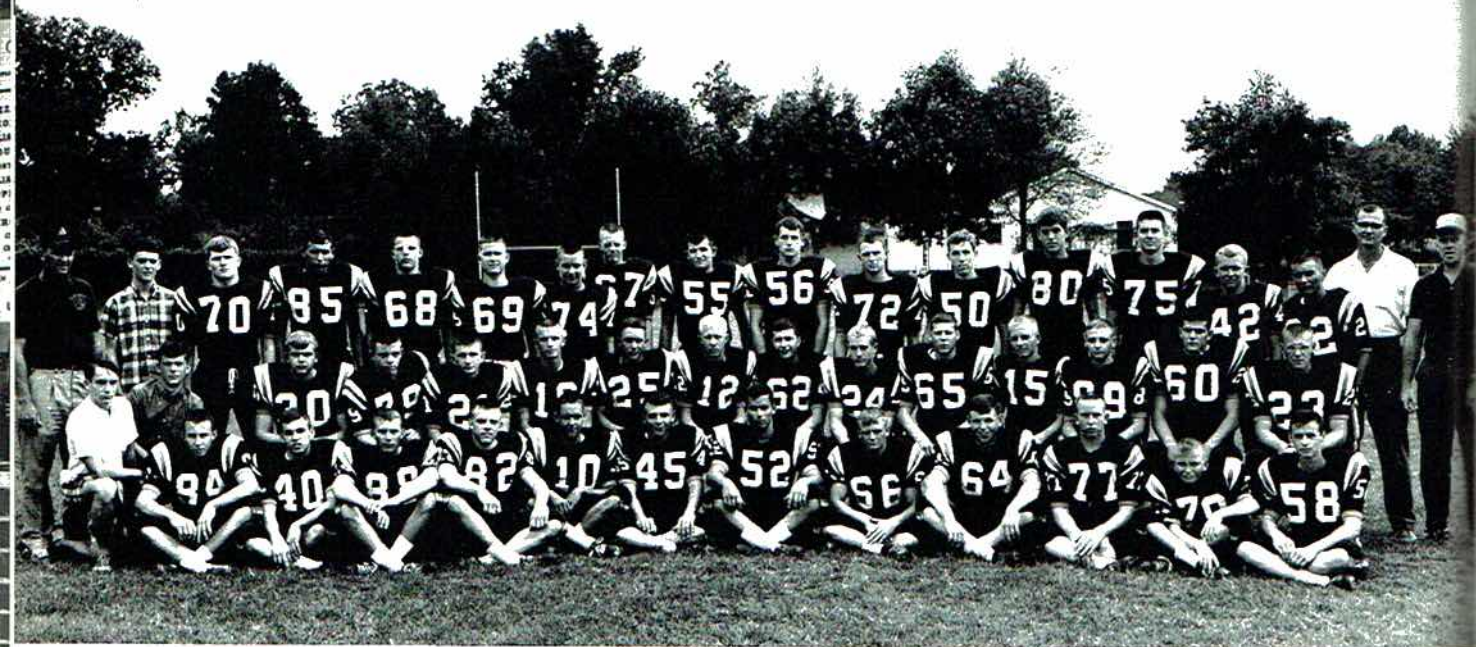


COACH LAWRENCE ROBINSON

Scottsboro - - - 20	Hixon - - - - - 6
Scottsboro - - - 19	Stevenson - - - 0
Scottsboro - - - 13	Huntsville - - - 6
Scottsboro - - - 34	Haleyville - - - 7
Scottsboro - - - 41	Arab - - - - - 6

*Wildcats  
Undefeated*

Scottsboro - - - 7	Fort Payne - - - - 0
Scottsboro - - - 35	Guntersville - - -13
Scottsboro - - - - 7	Cullman - - - - - 0
Scottsboro - - - 58	Sparkman - - - - 13
Scottsboro - - - 33	Notre Dame - - - 7
	(CIVIC BOWL)

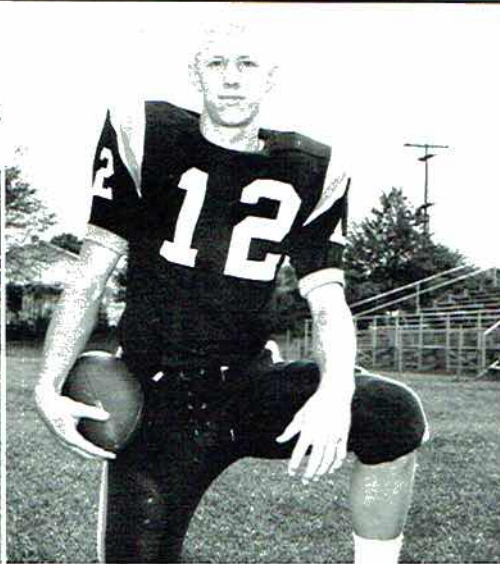


1965-66 TRIPLE A CHAMPS

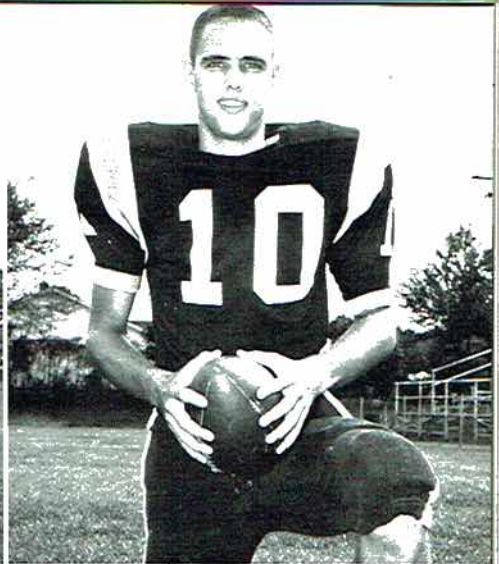




**CHARLES ADAMS**  
Quarterback



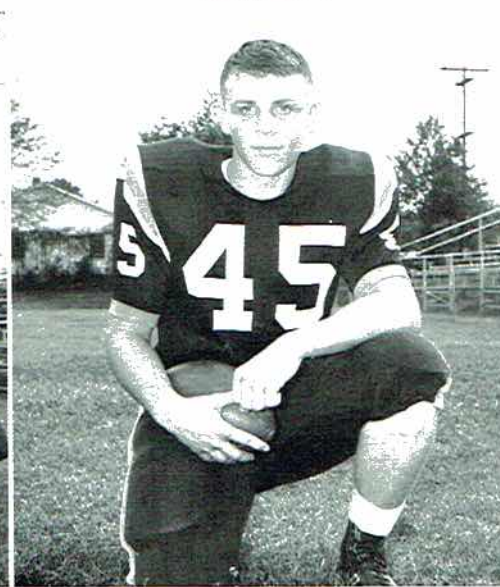
**DONALD WEBB**  
Quarterback



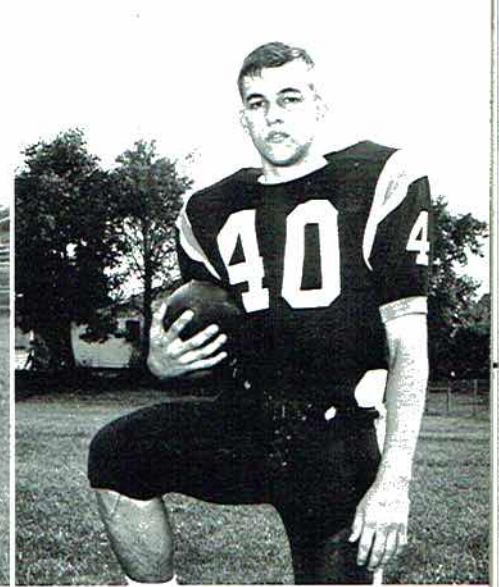
**ROBERT HESTER**  
Quarterback



**MIKE WILLIAMSON**  
Fullback



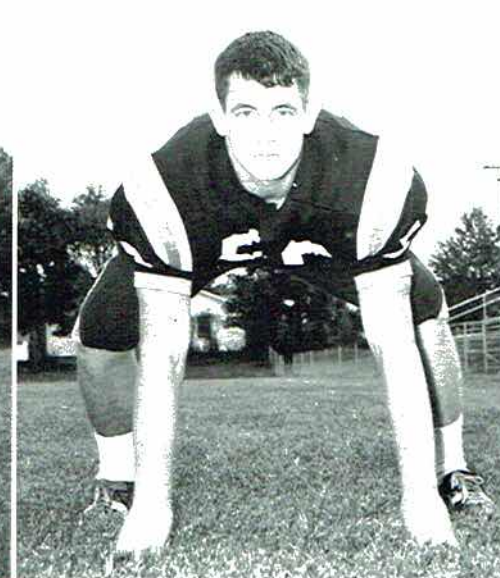
**BILLY WOOSLEY**  
Fullback



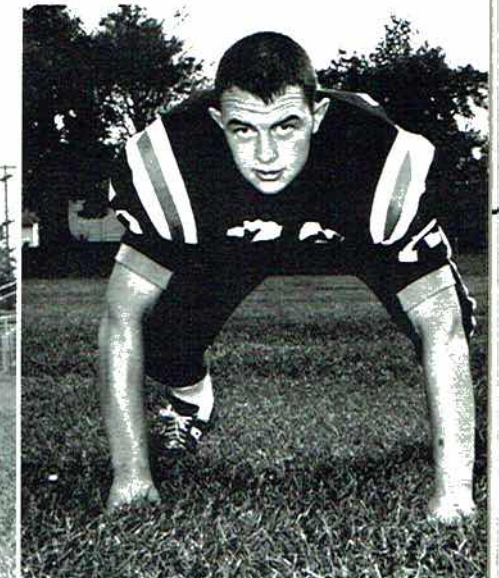
**TOMMY PERKINS**  
Fullback



**RUSSELL ATCHLEY**  
Left Tackle

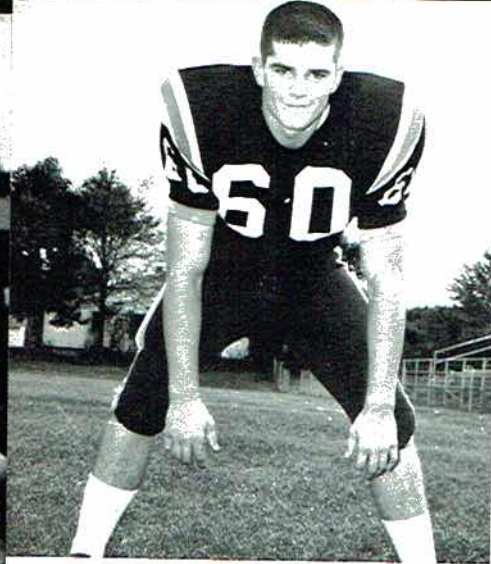


**MICKEY STEWART**  
Left Tackle

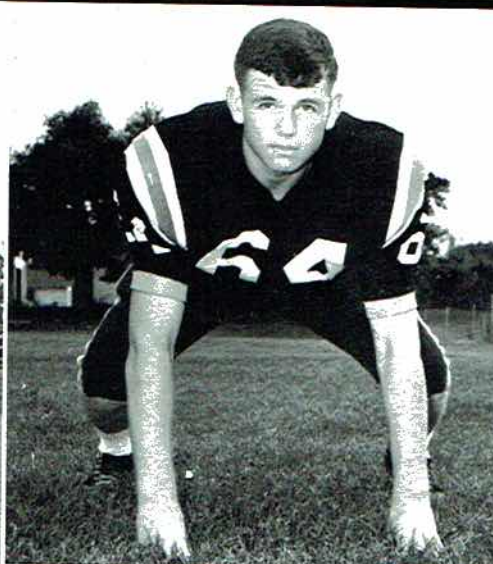


**DAVID ANDERSON**  
Right Tackle

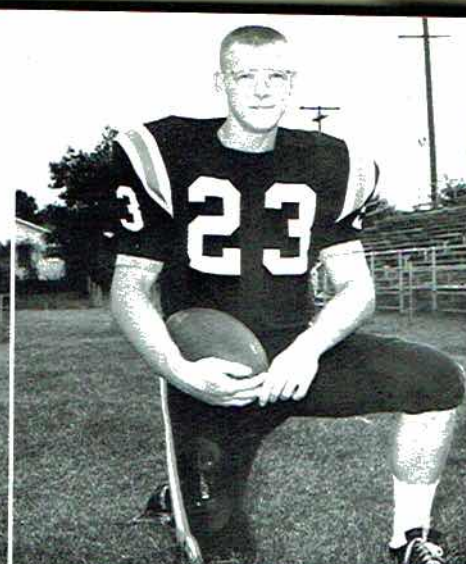




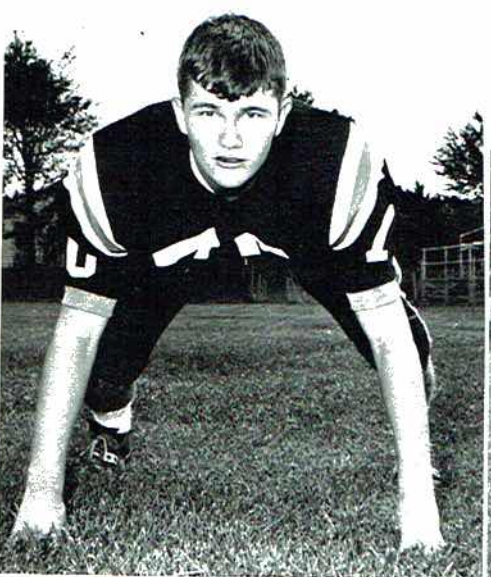
GLENN WILLIAMS  
Right Guard



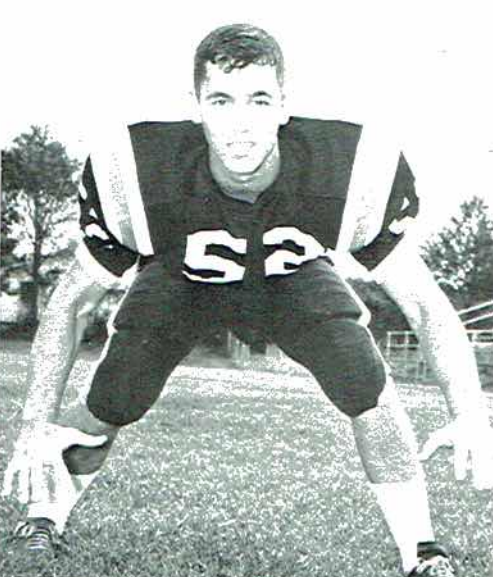
JERRY JUDGE  
Left Guard



BILLY RAY WEBB  
Middle Guard



DONALD BAGGETT  
Left Guard



ROBERT BONNER  
Center



WAYNE WOODEN  
Right Halfback



LARRY SMART  
Right Halfback



RAY BASS  
Left Halfback

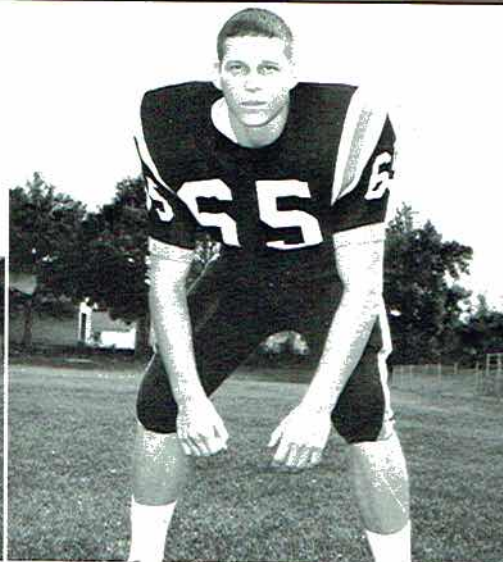


CHARLES DERRICK  
Left Halfback

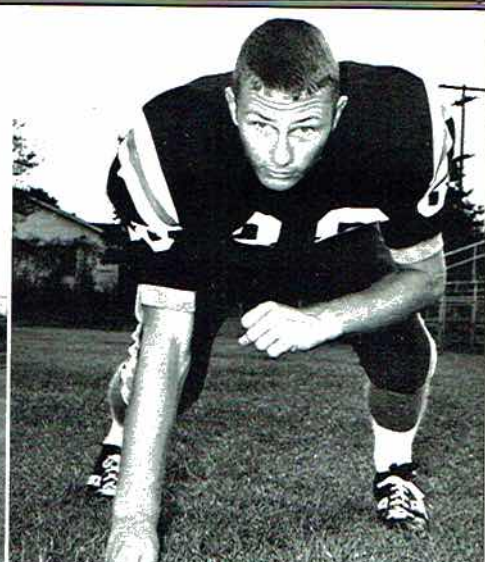




RONALD ATCHLEY  
Left End



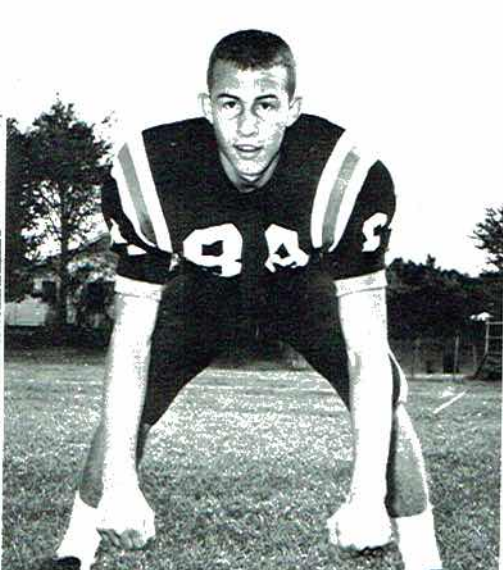
CLYDE BUTLER  
Right End



DUSTY CASH  
Right End



CLAY PEACOCK  
Left End



BILLY NICHOLS  
Right End



JERRY CHRISMAN  
Left End

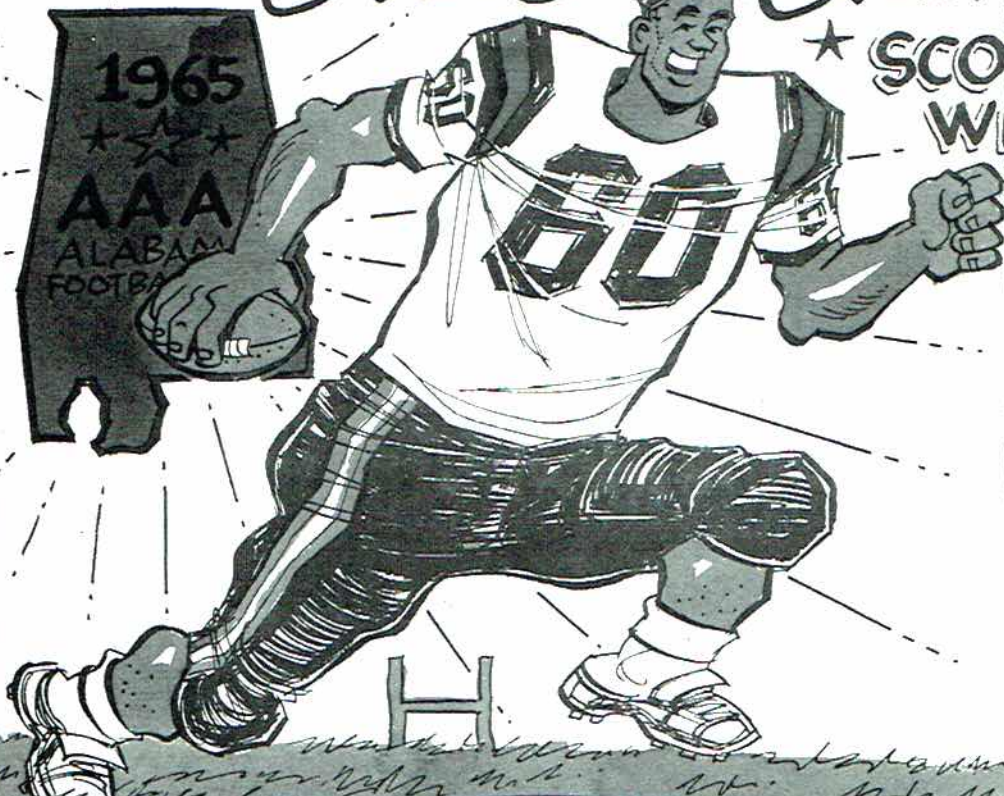




# ★ ALABAMA ★ ★ ★

## State Champions

### ★ SCOTTSBORO WILDCATS ★



COACHES:

John Meadows  
LAWRENCE ROBINSON  
DOUG STYLES

Cheerleaders:

MRS. VIRGINIA SLOAN  
"SPONSOR"  
ROSA REID  
NANCY COLLINS  
RITA RUDDER  
LINDA MILLER  
LINDA CHAPMAN  
PATSY GAMBLE  
DIANA BRANDON  
ANN FORRESTER

### 1965 Season Record

★ 10-0-0 ★

WE	OPPONENT	THEY
20	Hixson, Tenn	6
19	Stevenson	0
13	Huntsville	6
34	Haleyville	7
41	Arab	6
7	Ft. Payne	0
35	Guntersville	13
7	Cullman	0
58	Sparkman	13
★ TULLAHOMA, ★ TENNESSEE CIVIC BOWL GAME		
33	Notre Dame	7
CHATTANOOGA, TENN.		

### ★ THE WILDCATS... ★

CHARLES ADAMS-QB	TOMMY BRANDON-C
DONALD WEBB-QB	FRED HOLDER-C
ROBERT HESTER-QB	GLENN WILLIAMS-G
DOCKEY CAMPBELL-QB	JERRY JUDGE-G
BILLY RAY WEBB-B	CLYDE BUTLER-G
CHARLES DERRICK-B	LARRY SMART-G
WAYNE WOODEN-B	LARRY PROCTOR-G
MIKE WILLIAMSON-B	DONALD BAGGETT-G
BILLY WOOSLEY-B	KERMIT BOLTON-G
RAY BASS-B	KENNETH MATTHEWS-G
KEITH MURNER-B	JOHN MILLER-G
HANK FRAZIER-B	DAVID ANDERSON-T
LARRY WHITE-B	RUSSELL ATCHLEY-T
TOMMY PERKINS-B	FERRELL GASS-T
BRAD YATES-B	KENNETH HIGGINBOTHAM-T
BILL WHITE-B	EDDY AKIN-T
PAUL STEVENSON-B	CHARLES WILSON-T
RONNIE HENDERSON-B	EDDIE COLLINS-T
BRAD BRADFORD-B	RONALD ATCHLEY-E
ROBERT BONNER-C	CLAY PEACOCK-E
MICKY STEWART-C	DUSTY CASH-E
	BILLY NICHOLS-E
	JERRY CHRISMAN-E
	MARVIN PHILLIPS-E
	RAY SIMMONS-E

ALBERT CARLTON... MANAGER





(Players Left to Right) - Derrick, Butler, Hester, Linville, Chrisman, Talley, Simmons, Nichols, Webb, Elliott. Not pictured Ronald Dolberry.

## Scotties 1965-66

Voted by the Associated Press as the NO. 1 Team in Class 3A.

### SCHEDULE

SCOTTSBORO	61	NEW HOPE	52
SCOTTSBORO	79	PISGAH	88
SCOTTSBORO	44	HUNTSVILLE	46
SCOTTSBORO	61	DAR	83
SCOTTSBORO	69	SPARKMAN	64
SCOTTSBORO	79	ARAB	78
SCOTTSBORO	61	GUNTERSVILLE	60
SCOTTSBORO	72	WINFIELD	69
SCOTTSBORO	52	WESTPOINT	44
SCOTTSBORO	96	SECTION	76
SCOTTSBORO	81	DAR	74
SCOTTSBORO	69	PISGAH	66
SCOTTSBORO	66	DAR	60
SCOTTSBORO	72	SECTION	53
SCOTTSBORO	56	SYLVANIA	50
SCOTTSBORO	58	HUNTSVILLE	60
SCOTTSBORO	70	SPARKMAN	67
SCOTTSBORO	64	ARAB	70
SCOTTSBORO	76	NEW HOPE	63
SCOTTSBORO	102	BRIDGEPORT	48
SCOTTSBORO	64	WOODVILLE	55
SCOTTSBORO	56	PISGAH	62
SCOTTSBORO	43	PISGAH	67
SCOTTSBORO	72	WOODVILLE	58
SCOTTSBORO	76	SECTION	55
SCOTTSBORO	79	WOODVILLE	48
SCOTTSBORO	56	SYLVANIA	54
SCOTTSBORO	52	NEW HOPE	55
SCOTTSBORO	80	GUNTERSVILLE	67

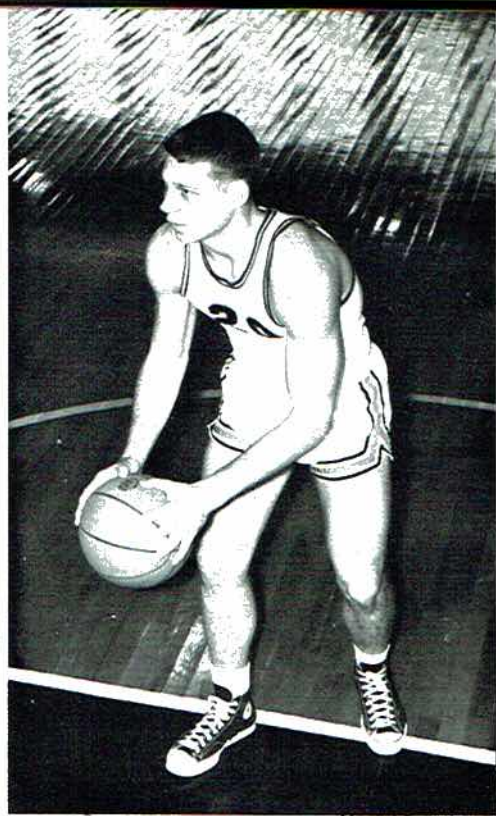


COACH CARTER  
Head Coach





DONALD WEBB  
Guard



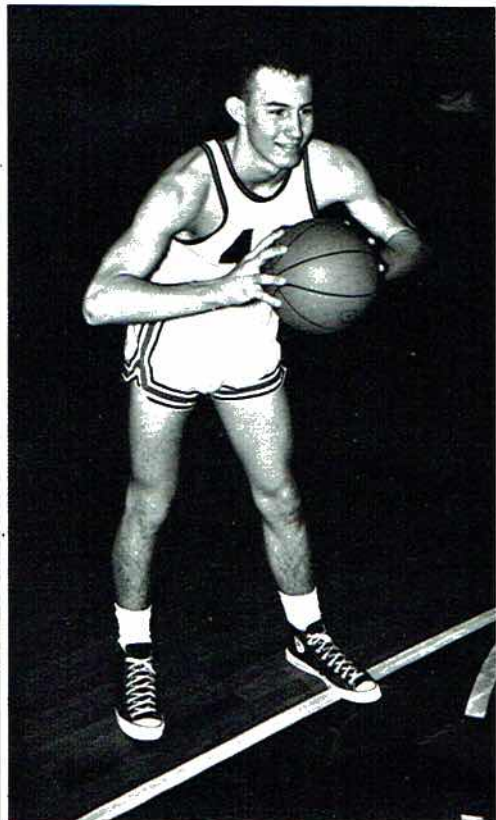
CLYDE BUTLER  
Guard



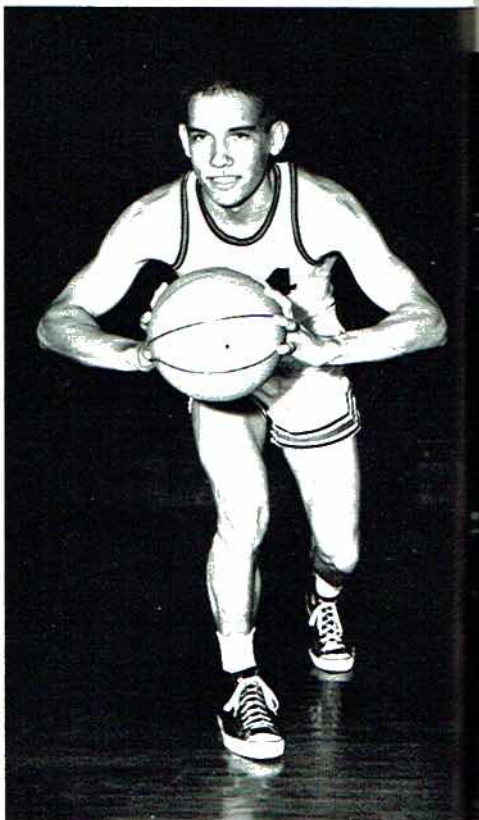
CHARLES DERRICK  
Guard



JERRY CHRISMAN  
Forward



BILLY NICHOLS  
Forward

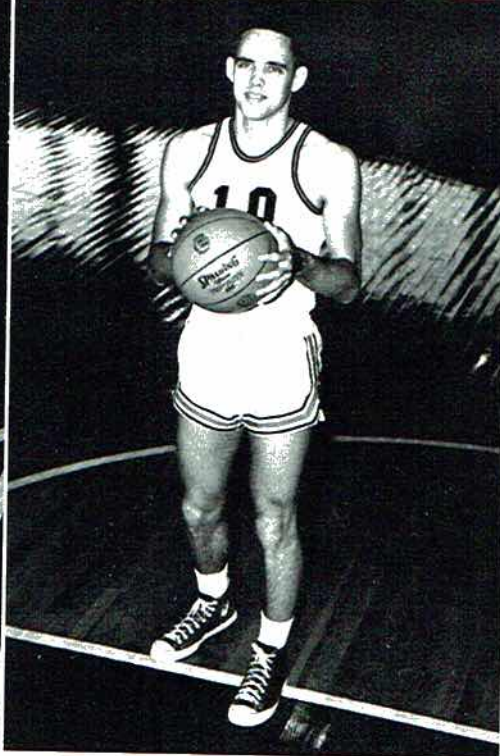


RONALD DOLBERRY  
Forward





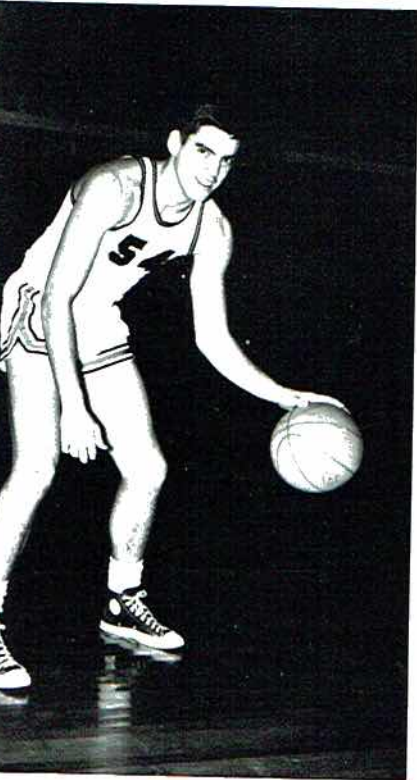
BOBBY TALLEY  
Center



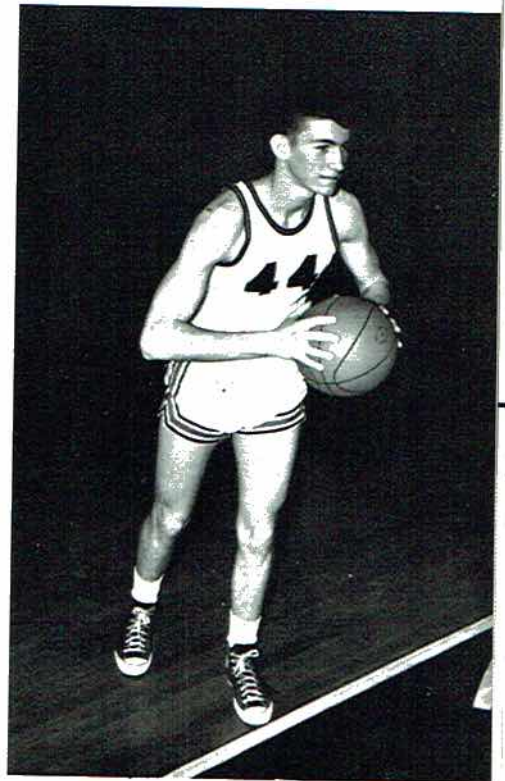
ROBERT HESTER  
Forward



MICKY ELLIOT  
Guard



RAY SIMMONS  
Forward



MIKE LINVILLE  
Forward



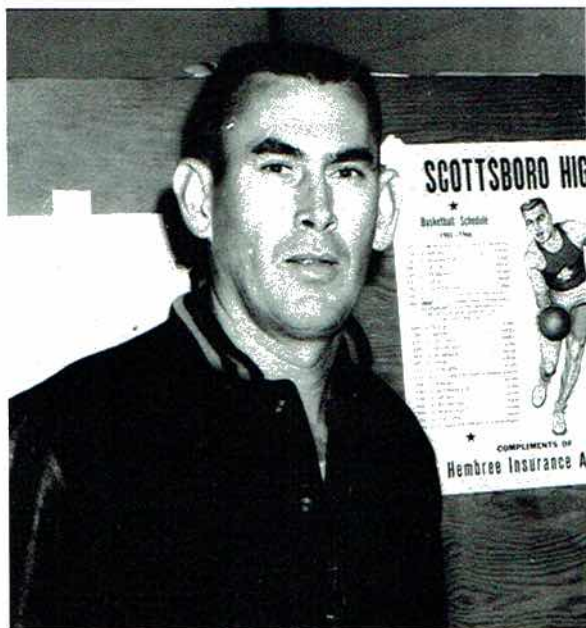


(Players left to right) - Bradford, Holt, Brandon, Griggs, Webb, Long, White, Allen, Bramblett.

## "B" Team

### "B" TEAM SCHEDULE

SCOTTSBORO	69	NEW HOPE	50
SCOTTSBORO	87	PISGAH	73
SCOTTSBORO	63	HUNTSVILLE	62
SCOTTSBORO	60	DAR	72
SCOTTSBORO	78	SPARKMAN	70
SCOTTSBORO	76	ARAB	62
SCOTTSBORO	82	MARSHALL	69
SCOTTSBORO	61	D. A. R.	49
SCOTTSBORO	90	SECTION	80
SCOTTSBORO	63	SYLVANIA	45
SCOTTSBORO	73	HUNTSVILLE	62
SCOTTSBORO	82	SPARKMAN	62
SCOTTSBORO	72	ARAB	69
SCOTTSBORO	65	NEW HOPE	33
SCOTTSBORO	57	BRIDGEPORT	46
SCOTTSBORO	63	WOODVILLE	48
SCOTTSBORO	85	SECTION	75
SCOTTSBORO	76	PISGAH	63
SCOTTSBORO	54	WOODVILLE	47
SCOTTSBORO	87	SECTION	71
SCOTTSBORO	81	WOODVILLE	40
SCOTTSBORO	58	SYLVANIA	59

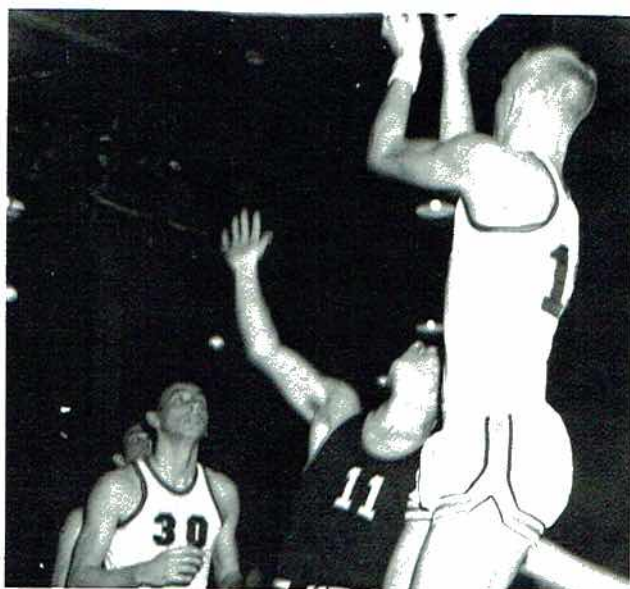


SAM HAMBRICK  
Coach

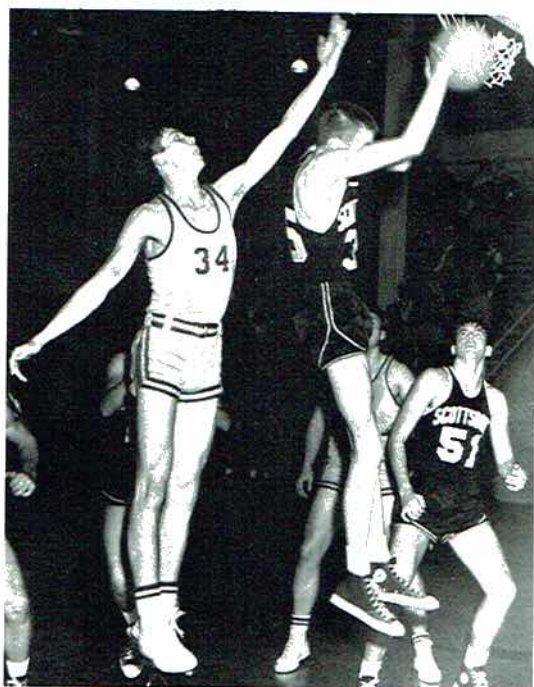




What's so funny, Simmons?



"Don't worry Donald, I'll catch you!"



Talley pulls down a rebound while Clyde does the Monkey.



This is THE Shot! Webb scores a record 50 points and the teams 100th point!



It's a bird.. It's a plane.. No! It's Super-Chris!!



"I hope Becky likes this one."



# Athletic Awards



GLENN WILLIAMS - Most Valuable Player



JERRY JUDGE - Best Defensive  
Lineman



CLYDE BUTLER - Best Sportsmanship



All Tri State - WEBB, WILLIAMSON, and  
WILLIAMS



Best Back - MIKE WILLIAMSON



All Tourney Basketball - NICHOLS,  
WEBB, BUTLER



Biggest Lover - ROBERT HESTER

Other Awards: LARRY SMART - Best Blocking Back;





*Advertisements*



**BOOSTERS  
INCORPORATED**

Montgomery, Alabama

P.O. Box 7156

Phone (Area Code 205) 262-3602

Compliments of

**SCOTTSBORO  
FUNERAL HOME  
&  
COTTON PRODUCER'S  
ASSOCIATION**

**HOLSUM BREAD**



**MERITA BREAD CO.**

THE SUPPORT OF

OUR ADVERTISERS IS

GREATLY APPRECIATED.

"Heil, Coach Meadows"



"Follow the Boys"





**LADIES'  
&  
CHILDREN'S  
SHOPPE**

Shop  
for Fashions for All Ages

Dresses by: Carlye, Gay Gibson, L'Aiglon,  
Miss Pat, Minx Mode, R. & K  
Originals.

Sportswear by: Dalton, White Stag, Queen  
Casuals, James Kenrob.

Lingerie by: Vanity Fair, Shrank

Children's Clothes by: Ruth Originals,  
Bambury, White Stag, Her  
Majesty, Turtle Bay, Farah,  
Walls, of Texas, Donmoor.

Jewelry by: Whiting and Davis

---

**STATE NATIONAL BANK OF ALABAMA**

IT'S GREAT TO BANK AT STATE

Member FDIC



**HI-JACKSON WHOLESALE**

Phone 574-4123

119 South Market Street

Scottsboro



# BUTLER AND KENNAMER WHOLESALE CO.



Phone 574-3690

Scottsboro, Alabama

Enjoy Good Food at  
Reasonable Prices at

## KATIE'S

Highway 72 East  
Scottsboro, Alabama

## OLD HICKORY SMOKE HOUSE

122 East Peachtree Street

Phone 574-3202

Scottsboro, Alabama

Compliments of

## BELLEFONTE LACE CORPORATION

## KENNAMER'S

Scottsboro's Newest  
and Most Modern Store

145 East Laurel Street

"There's No Substitute for Quality"



# You Don't Have To Start At The Top . . .



If you're thinking about career opportunity, you might think about Burlington, the world's leading manufacturer and merchandiser of textiles for every purpose. Why not start at the top of the textile ladder? Why not investigate a "world of opportunity" at:

**Burlington** INDUSTRIES, INC.   
EXECUTIVE OFFICES, GREENSBORO, N. C.

## V. J. ELMORE STORES INC.

Scottsboro, Alabama

Shop More - Save More

at ELMORES

## McCAMY DRUGS

Scottsboro, Alabama

248 South Broad

574-1672



Scottsboro's Most Modern  
Banking Facilities



**J. C. JACOBS  
BANKING COMPANY**



Compliments of

**COPLIN  
HARDWARE CO.**

The Modern Hardware  
Store

**JIM PITT'S FLOWERS**



*Flowers*

For Every Occasion

**HAMMER'S**

Full of Surprises

and

"Always Something New"

**SCOTTSBORO AIR  
CONDITIONING &  
SHEET METAL CO.**

DEAN GENTLE      ELBERT BEAIRD  
HORACE J. WILKERSON

Refrigeration, Heating and  
Electrical Contracting

119 Broad Street  
Scottsboro, Alabama

Day Phone  
574-4220

Office - 574-1455  
Res. 638-5877

**HARRIS-JONES  
DODGE, INC.**

637 West Willow Street  
Scottsboro, Alabama



WOODSON JONES  
Vice President

Office  
574-1455



**CAMPBELL TRACTOR COMPANY**

GMC Trucks

West Willow Street

Phone 574-1234



# SCOTTSBORO WHOLESALE CO.

Wholesale Grocers

Telephone 574-1334

301 North Houston Street

Scottsboro, Alabama

## DISTRIBUTORS OF

Sunflour

Dixie Lily Flour

Sunflower Corn Meal

Stokely Canned Foods

Van Camp Canned Foods

Bama Foods

Happy Kids Products

Gorton Frozen Seafoods

Jewell Frozen Chicken

Pet Ritz & Swiss Miss Pies

Morton Dinners & Meat Pies

Sealdsweet Frozen Orange Juice

SUPPLY HEADQUARTERS FOR







# HARBIN MOTOR COMPANY

**R. B. DERRICK REAL ESTATE CO.**

"We Sell the Earth"

State National Bank Building

Scottsboro, Alabama

Telephone 574-2717

## **HODGES DRUG AND H & H PHARMACY**

YOUR DEPENDABLE DRUGGIST

Scottsboro, Ala. Phone 574-3535

## **RATLIFF'S QUALITY STORE**

"Where Your Business Is Appreciated"

Laurel Street

Phone 574-1179

Scottsboro, Alabama



**H. S. BREWSTER  
& SON**

Eggs Delivered Right  
to Your Door

**THE SENTINEL AGE**

Published  
Sunday and Thursday

Scottsboro, Ala.

574-1020

**GULF DISTRIBUTOR**



Scottsboro, Alabama

M. F. GARDNER

**HIWASSEE LAND COMPANY**

Growing and Buying Pulpwood for

Bowsters Southern Paper Corp.

Compliments of

**DAVIS DRIVE-IN  
CLEANERS**

**WROS  
RADIO STATION**

Scott Street

Scottsboro, Ala.

Dar  
J. C  
Wes  
Grul  
Scot  
Hem  
Brov  
Red  
Prin  
Scot  
Wale  
W. F  
Thor  
Firs  
W. J  
Ratli



# SCOTTSBORO RETAIL MERCHANTS ASSOCIATION

Scottsboro, Alabama

Darwin's

J. C. Jacobs Banking Company

Western Auto

Grubtown U. S. A.

Scottsboro Jewelers

Hembree Insurance Agency

Brown & Bergman Furniture Company

Red Hot Store

Printing Mart

Scottsboro Shoe Store

Wales Jewelry

W. H. Payne Drug Company

Thomas Apothecary

First National Bank

W. J. Word Lumber Company

Ratliff's Store

Elmore's 5 & 10

Sterchi Furniture

WCRI Radio Station

Scottsboro Hardware

Adams Store

Rough & Tumble Furniture Company

Lay's 5 & 10

Woodall's Ready-to-Wear

State National Bank

Ladies' & Children's Shoppe

Piggly Wiggly

Sentinel Age

Top Dollar

Kenwin's

Sears Roebuck & Co.

Copeland Tire Company

Tru-Discount Store



**VALES  
JEWELRY CO.**

Diamonds - Silver  
Gold - China

574-2941  
Scottsboro, Alabama

**PIONEER  
FINANCE CO.**

410 East Willow St.

Phone 574-1100

Scottsboro, Alabama

**C R I**

**NEWS**



410 East Willow St.  
574-1050  
Scottsboro, Alabama

**ROUGH AND TUMBLE  
FURNITURE COMPANY**

"Scottsboro's Largest"

Westinghouse

Speed Queen  
Washers

Zenith

Simmon's

107 West Laurel St.

Phone 574-2338

Scottsboro, Alabama

**CHANDLER  
CYCLE CO.**

574-2542  
Scottsboro, Alabama  
BOZER, Mgr.

**DAVID ALLEN  
MOTORS**

DEPENDABLE AUTOMOBILES

307 West Willow

Scottsboro, Alabama



**BETTER GROCERIES**



**A. J. LINDSEY**

Fort Payne, Alabama

**BURKETT**



Telephone 539-1961

304 Governors Drive, S. W.

Huntsville, Alabama

**HAMILTON  
BAND INSTRUMENT CO.**

35 West 13th Street

Anniston, Alabama



Office Phone  
837-7382

**HUSTLER PRINTING CO.**

South Pittsburg, Tennessee

Printing      Engraving      Advertising

**SOUTH PITTSBURG  
HUSTLER**



Athletic  
Equipment  
That  
Scores

Birmingham  
2071 5th Avenue North

Huntsville  
404 Governors Drive

Gadsden  
510 Broad St.





202 1/2 South Broad Street

Phone 574-4564

Scottsboro, Alabama



# COPELAND TIRE COMPANY, INC.

"Car Care Center"  
301 Market Street--Phone 574-3319  
Scottsboro, Alabama

B. F. Goodrich Passenger Tires  
With Complete Auto Service

B. F. Goodrich Truck Tires  
Road Service

B. F. Goodrich Farm Tires  
on the Farm Service

B. F. Goodrich Recapping  
While You Wait

SERVICE IS OUR MOTTO

**W. H. PAYNE DRUG CO.**





# THOMAS APOTHECARY

WILLIAM T. THOMAS, R. Ph.

QUALITY

SERVICE

Howland Boulevard

Phone 574-3115

Scottsboro, Alabama

"We Appreciate Your Letting Us  
Make Your Senior Portraits"

## GIST STUDIO

602 South Broad St.

Phone 574-3659

Scottsboro, Alabama

## PARKS'

Sooner or Later Your Favorite Store

MR. AND MRS. ALBERT PARKS

101 South Broad Street

Phone 574-1162

Scottsboro, Alabama



**BETTER GROCERIES**



# GRUBTOWN

"Where Shopping Is A Pleasure"

Fresh Fancy Produce

Money Saving Prices

Plain and Fancy Grub

Open 7:30 a.m. Til Midnight, 6 Days

Compliments of

**W. L. HALSEY GROCERY CO.**

**SUE MAE'S  
HAT SHOP**

308 Martin St.

For Women Who Know and Care

**WORD  
LUMBER CO.**

Your ONE-STOP Building  
Materials DEALER

Established 1892

Phone 574-3858

Scottsboro

CALL  
574-21  
702 E.  
Scotts

Phone

Ins  
"s s



# HEMBREE INSURANCE AGENCY



Phone 574-1279

Scottsboro, Alabama

"Your Complete One Stop Sewing Supply Center"

## KENNAMER'S MILL ENDS STORE

Phone 574-3157

Scottsboro, Alabama

### FEDERAL LAND BANK

O. M. JOHNSON, Manager

CALL  
574-2139  
702 E. Laurel  
Scottsboro, Ala.

CALL  
845-2711  
306 Gault Ave.  
Ft. Payne, Ala.

### B. & G GAS COMPANY

Distributors of Propane Gas and  
Equipment

Telephone 574-1030

Scottsboro



# WORD MOTOR COMPANY INC.

Chevrolet and Oldsmobile

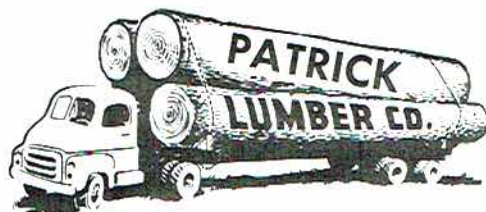
Sales and Service

P. O. Box 480

Scottsboro, Alabama

Phone 574-3233

## PATRICK LUMBER COMPANY



615 E. Willow

Phone 574-2211

## VARIETY BAKE SHOP

TO SUIT YOUR  
TASTE



Phone 574-2424

"Home Baked  
Flavor"

Scottsboro

## CRAWFORD CLEANERS

105 E. Appletree Street

Phone 574-3212

Scottsboro, Alabama

## SHOOK LAUNDRY & CLEANERS

Phone 574-2288

Scottsboro, Alabama

## PRINTING MART

Commercial Printing  
Rubber Stamps  
Office Supplies

BRAD and BILL SHELTON

109 N. Market

Phone 574-3755

Scottsboro, Alabama





... GO-WILDCATS-GO ...



206 So. Broad St.  
574-4313



Corner of Caldwell and West Laurel  
574-2500

WILDCATS!.....We Welcome Your Business!  
... THE BEST IN BANKING COSTS NO MORE! ...

## THE FRIENDLY FIRST NATIONAL

of Scottsboro

Member

Fed. Res. System and Fed. Dep. Ins. Corp.





# MEADOW GOLD DAIRIES

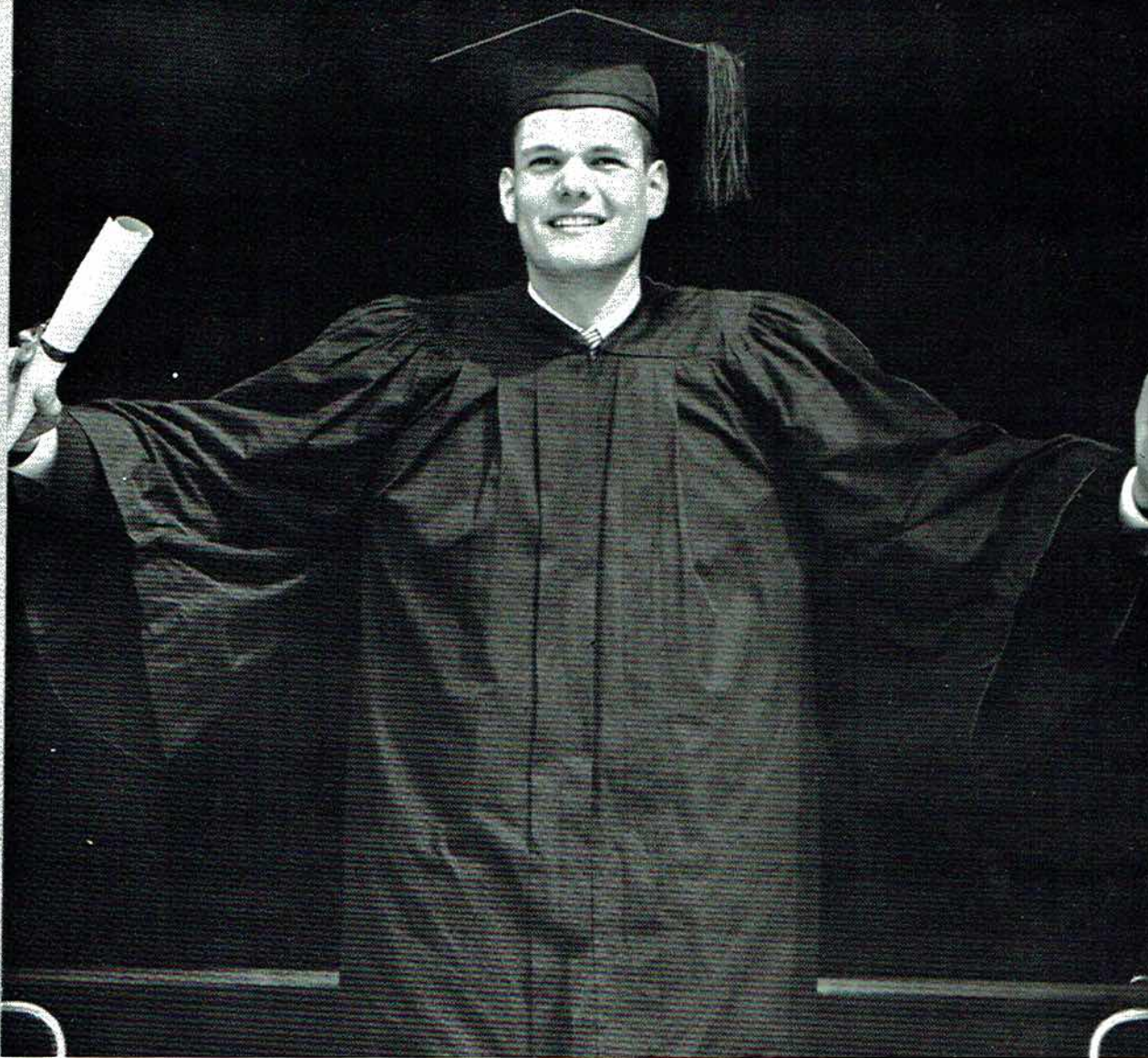
"Jackson County Milk for Jackson County People"



Phone 574-1201

Scottsboro, Alabama





## CONGRATULATIONS, "STAYPUT"!

No "dropout" you! You wanted a future that offered opportunity. So you stuck with it. And you worked hard. Now you hold in your hand the passport to that future.

Just ahead lies life's biggest decision--your choice of a career. Choose wisely. Enter the business with opportunities unlimited--the textile industry.

Ever expanding, ever progressing, our industry constantly seeks intelligent, resourceful, imaginative young people who welcome the challenge of progress.

Learn more about the opportunities offered you by the textile industry. Contact the Personnel Director at the J. P. Stevens plant near you.



**BENHAM UNDERWEAR  
MILLS**

207 W. Railroad Phone 574-1777

Scottsboro, Alabama

**WORD-BOLTON  
FUNERAL HOME**

716 S. Broad St. Phone 574-1066

Scottsboro, Ala.



COMPLIMENTS OF THE

**RITZ  
&  
TAWASENTHA DRIVE IN  
THEATRES**

**DARWIN'S**

Clothes and Shoes for the  
Entire Family.

Phone 574-2667

Scottsboro

**SCOTTSBORO  
BUSINESS MACHINES**

Sales \* Repair Service \* Rentals

Scottsboro, Ala.

Phone 574-2288



**Best Wishes  
to the  
Class of  
'65-'66**

**from**

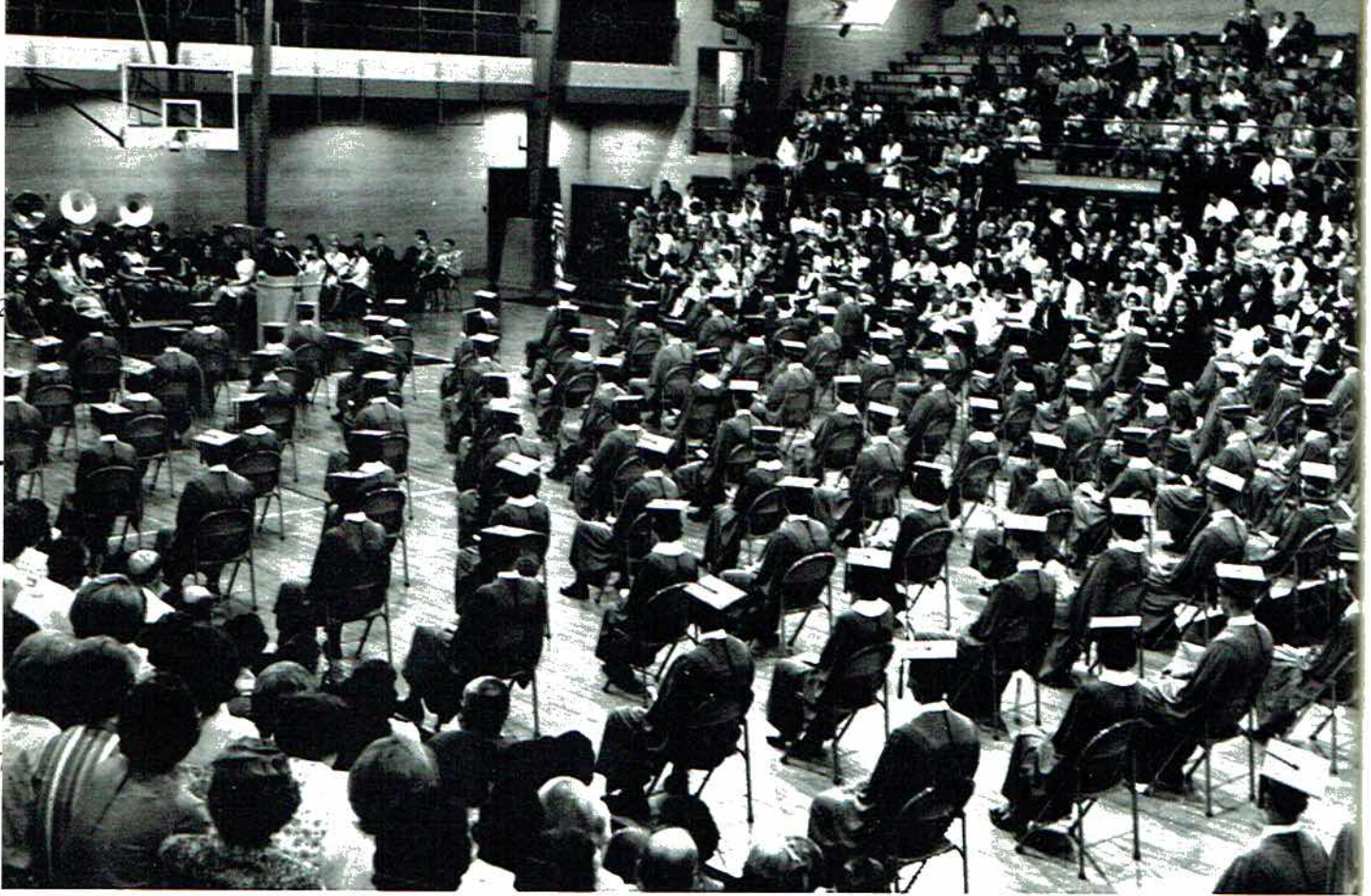
**REVERE**  
COPPER AND BRASS INCORPORATED

*Founded by Paul Revere in 1801*

Executive Offices: 230 Park Avenue, New York, N. Y. 10017







## *Goodbye, Scottsboro High*

We take with us  
The memory of our happy days with you...  
We take thy gifts of knowledge  
Talent, tolerance, independence.

But we wish to leave behind  
Our gifts to those yet to come.

We leave our spirit, our traditions,  
Our love, our tears,  
And most of all,  
Our laughter...