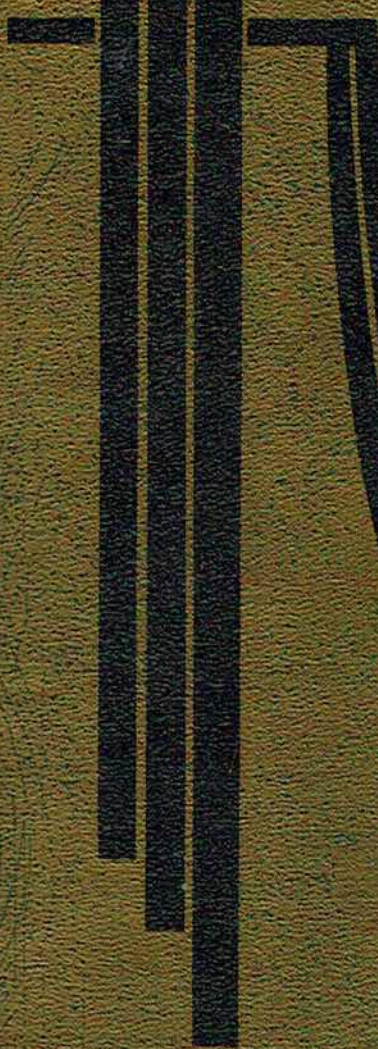
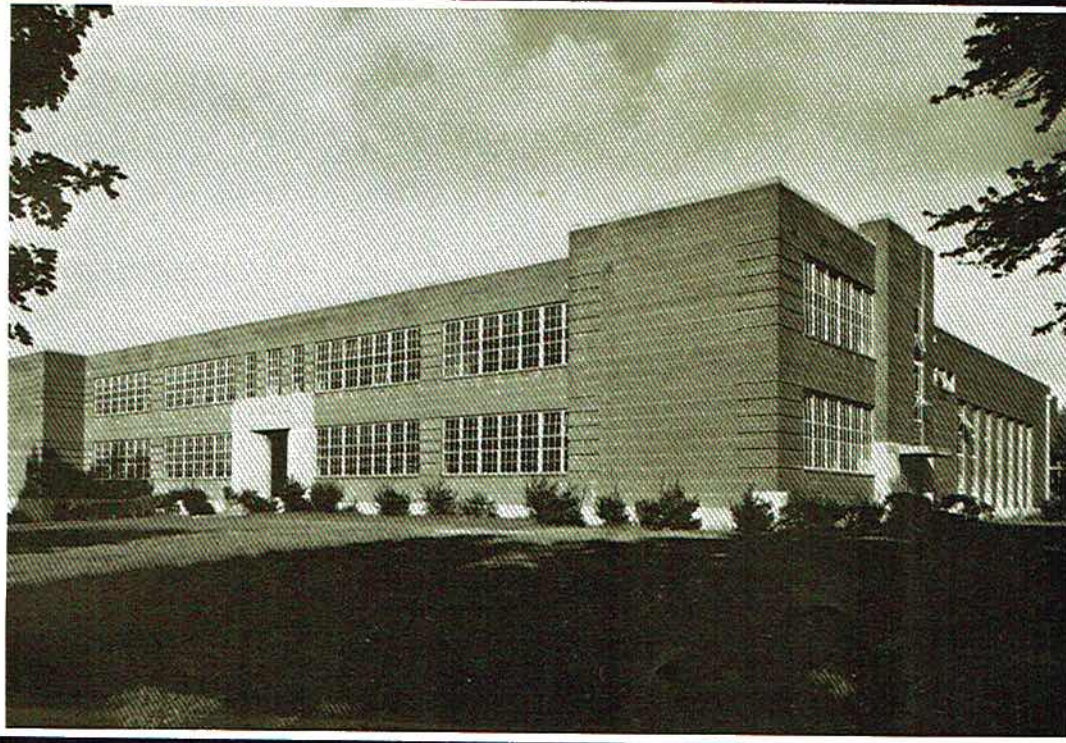


REMINDER





S
H
S

The Reminder



*Scottsboro High School
Scottsboro, Alabama*



Mr. Jack Cox

t
d
t
J
v
a
s
a
l
a
B
th
H
a
to
a
c

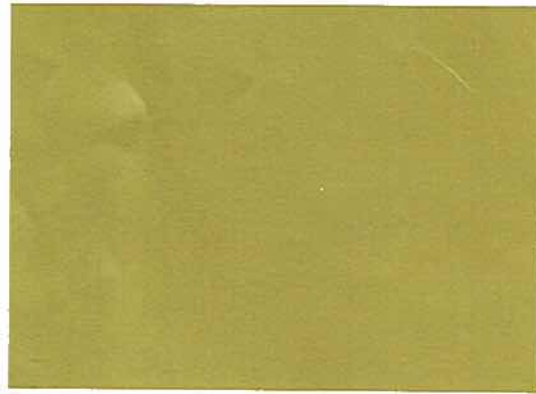
It is with pride and affection that we, the students of Scottsboro High School, dedicate the 1965 edition of our yearbook, the Reminder, to our band director, Mr. Jack Cox.

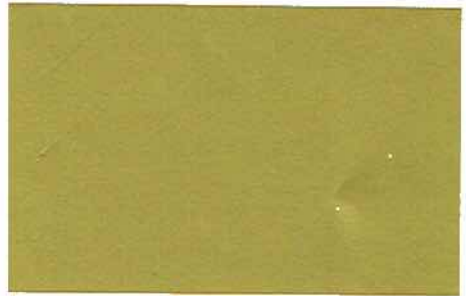
His interest in his students and his devotion to our band have endeared him to all who have come under his influence.

He has inspired the members of our school band with his fine musical ability and wonderful personality. He has overlooked their carelessness and forgetfulness and cheered them in moments of despair. By encouraging the students to develop their talents, he has guided our Scottsboro High School Band through many honors and accomplishments.

To Mr. Cox, who has helped our band to become an asset to our school, our town, and our community, we gratefully dedicate the 1965 Reminder.





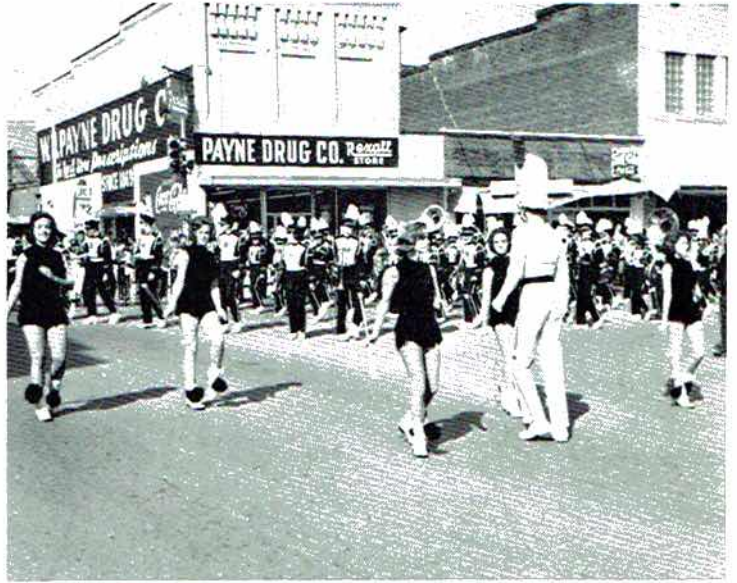


... people and places and things.



e happenings . . .

*... familiar to our senses of sight and touch,
taste and smell, hearing.*





... a low grade, a sharp couple.



Each student both a follower and a leader . . .



... a speaker and a listener.



Expressing individuality or conformity . . .

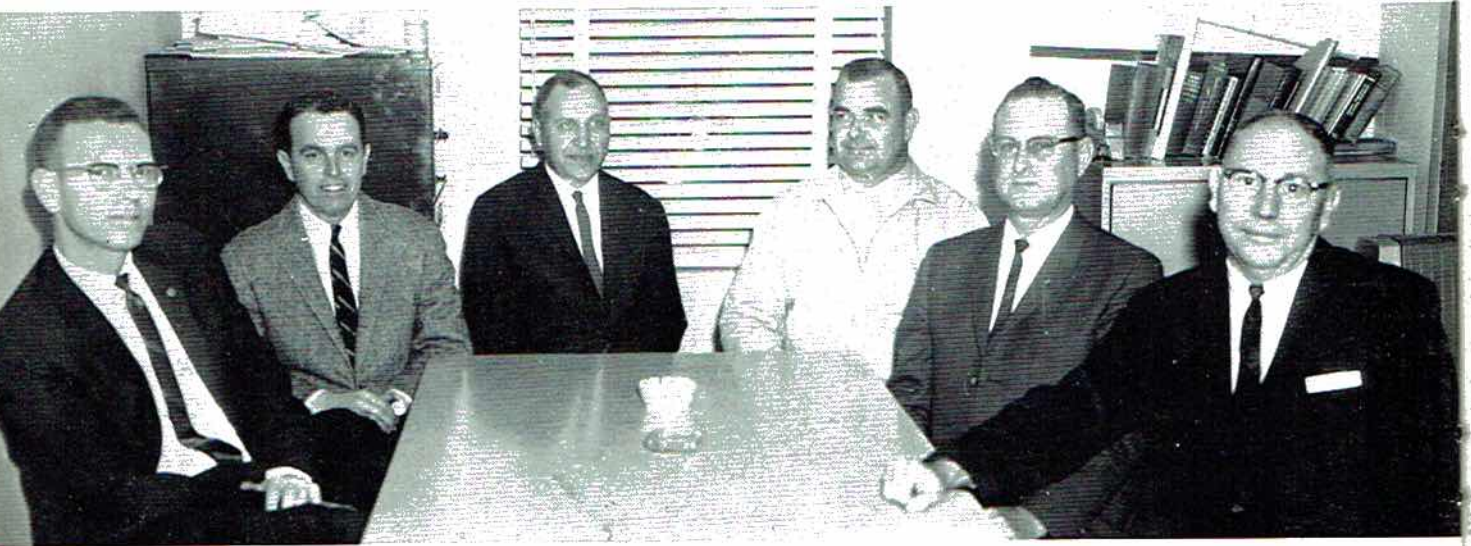
we begin to understand ourselves.





Faculty

Scottsboro City Board of Education



BOARD MEMBERS, Left to Right: Mr. Thomas Wilkinson, Mr. Bill Heath, Mr. Brooks Woodall, Mr. Alvin Butler, Mr. Clyde Butler, Dr. T. T. Nelson.

DR. T. T. NELSON
Superintendent
Scottsboro City Schools

MR. RAY COLLINS
Principal
Scottsboro High School

Administration



MRS. ROBERT BAGGETT
Secretary
Scottsboro City
Schools



MRS. T. T. NELSON
Secretary
Scottsboro High
School





MRS. ROY AMBRESTER
Mary Hardin Baylor - B.S.
University of Alabama - M.A.
Guidance Counselor



MRS. GEORGE ARMSTRONG
Athens College - B.A.
Peabody - M.A.
English
F. T. A. Sponsor



MRS. JACK BROOME
Florence State - B.S.
Commercial Arts
Reminder Sponsor



MR. CONDON CAMPBELL
University of Alabama - B.S.
World History
Speech



MR. Q. K. CARTER
Jacksonville State - B.S.
Physical Education



MR. JACK COX
Jacksonville State - B.S.
University of Alabama - M.A.
Band Director



MRS. NEWMAN DAVIS
University of Alabama - A. B.
English
Senior Class Sponsor



MRS. HOLLIS HAMBRICK
Alabama College - B. A.
Peabody - M. A.
English



MRS. CHARLES HEATH, SR.
H. Sophie Newcomb - B. of
Design
Mary Hardin Baylor - B. A.
Librarian
Library Club Sponsor



MR. WILEY HOPPER
Auburn University - B. S.
Agriculture
F. F. A. Sponsor



MRS. DORAN INGRAM
University of Tennessee - B. S.
Home Economics
F. H. A. Sponsor



MRS. RUDOLPH JONES
University of Alabama - B. A.
American History



MRS. JOSEPH A. LEE
University of Alabama - B.S.
Peabody - M.A.
Biology
Medical Careers Club Sponsor



MRS. JOHN MEADOWS
Jacksonville State - B.S.
Business Math - Law
Bookkeeping, Typing I



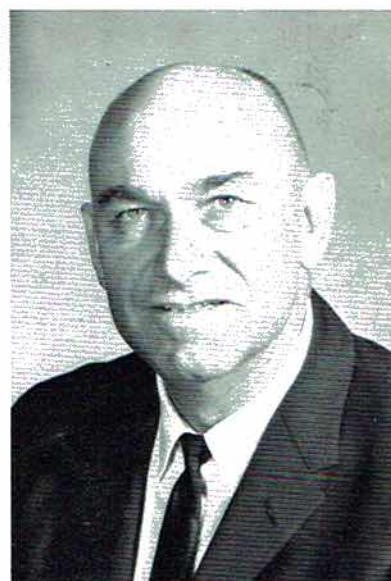
MR. JOHN MEADOWS
Jacksonville State - B.S.
Peabody - M.A.
Physical Education
Biology
"S" Club Sponsor



MISS CORA MICHAELS
Bethel College - B.A.
University of Alabama - M.A.
Mathematics



MR. WILLIAM PENDERGRASS
Jacksonville State
Mississippi Southern - M.S.
Democracy, Economics
National Honor Society Sponsor



MR. J. R. PORCH
Jacksonville State - B.S.
Auburn - M.S.
Diversified Occupations
D.O. Club Sponsor



MISS LILLY PORTER
University of Alabama - B.S.
University of Alabama - M.A.
Science
Science Club Sponsor



MRS. JAN ROBERTS
University of Tennessee - B.A.
Languages
Spanish Club Sponsor



MRS. FRED SANDERS
University of Alabama - B.A.
Peabody - M.A.
Mathematics
Student Council Sponsor



MRS. WILLIAM SLOAN
Jacksonville State - B.S.
Physical Education
Pep Club Sponsor



MRS. THOMAS STEVENSON
University of Alabama - B.A.
Economics, American History



MRS. FRED WALLINGSFORD
Florence State - B.S.
Commercial Arts
Wildcat Sponsor



Classes



Seniors

President - WADE GENTLE
Vice-President - HOWARD IVEY

Typist - JEANETTE CARVER

Secretary - JACQUE RIDLEY
Treasurer - KENNETH CAMPBELL

JOHN

Sports
Club,
Drum
cal C

HOYT

Pep C
Club,

REBECC

Scien
urer.
Club,
Major
Caree
ant, S

JO AN

FHA
1-3

JOHN FRED ARMSTRONG

Sportsman Club, 1; Pep Club, 1-3; Band, 1-3; Drum Major, 2, 3; Medical Careers, 1



JANNIE ARNOLD

FHA Club, 1-3; Pep Club, 1-3; Who's Who Most Athletic, 3



HOYT BAKER

Pep Club, 1-3; Spanish Club, 2, 3



PHYLLIS WILBORN BAKER

Pep Club, 1-3; Latin Club, 1, 2; National Honor Society, 1-3; FHA Club, 1-3



REBECCA ANNE BARCLAY

Science Club, 1, 2; Treasurer, 1; FTA, 2, 3; Pep Club, 1-3; Band, 1-3; Majorette, 2, 3; Medical Careers, 3; Office Assistant, 2



JOE L. BARNES

"S" Club, 1-3; Sportsman Club, 1-3; Spanish Club, 2, 3; Football, 1-3; Basketball, 1, 2; Pep Club, 1-3



JO ANNE BERRY

FHA Club, 1; Pep Club, 1-3



RODNEY GENE BIAS

Pep Club, 1-3; Spanish Club, 2, 3



MITCHELL BOLES

Vice-President of Sophomore Class; Football, 1-3; "S" Club, 1-3; Pep Club, 1-3; Spanish Club, 2, 3; Secretary of Junior Class; SCOAG Delegate, 3



RICHARD BOLES

FFA Club; Pep Club; Band, 1-3;



BUNNIE BRADFORD

Band, 1-3; Majorette 1-3; Head Majorette, 3; Band Sweetheart, 3; Science Club, 1, 2; Secretary-Treasurer, 2; Pep Club, 1-3; Spanish Club, 2, 3; Secretary-Treasurer, 2; Student Council, 1; National Honor Society, 1-3; FTA, 2, 3; Historian, 3; Treasurer of Sophomore Class; Class Favorite, 1, 3; Who's Who Friendliest, 3; Medical Careers Club, 3; Secretary-Treasurer, 3; Annual Staff, 3; Wildcat Staff, 3; Junior Academy of Science, 1



BOBBY JENE BRADFORD

FFA, 1-3; D.O., 2, 3; Pep Club, 1-3; First Vice-President Northern District D.O., 3



MARTHA JANE BRAMBLETT

Pep Club, 1-3; FHA, 2, 3; Pianist, 3; FTA, 2, 3; Secretary, 3; National Honor Society, 2, 3; Treasurer, 3; Latin Club, 1, 2; Science Club, 2; Band, 1-3; Band Sweetheart, 2; All State Band, 2, 3; Who's Who Most Courteous, Delegate to State NHS Convention



GLENDIA CAROL BRADFORD

Pep Club, 1-3; FHA, 1; Office Assistant, 3; FTA, 3



RONALD DAVID BRANDON

Band, 1-3; All State Band, 2; Sportsman Club, 1-3; Pep Club, 1-3; All Star Band, 2; Who's Who Most Talented; Science Club, 2; Medical Careers, 2; School Bugler, 3; Band Captain, 1; Music Study Club Award, 2



TERRY BRANDON

"S" Club, 1-3; Pep Club, 1-3; Football, 1-3; Most Valuable Defensive Back Returning, 2; Track, 1; Student Council, 1; Basketball, 1-3;



JAMES THOMAS BREWER

Office Assistant, 3



JAMES WILLIAM BREWER

Pep Club, 1-3; Student Council, 2, 3; "S" Club, 1; Science Club, 1, 3; FTA, 1-3; Sportsman Club, 1-3; Debate Team, 3; Basketball, 1;



BILLY BREWSTER

Pep Club, 1-3; D.O. Club, 3; Football, 2



ROBERT J. BRIDGES

Pep Club, 1-3; Sportsman Club, 1-3



JOHNNY BROOKS

Pep Club; "S" Club



RICHARD BROWN, JR.

Pep Club, 1-3; Science Club, 2



LARRY BRYANT

Pep Club, 1-3; FFA



BARBARA BYRD

Pep Club, 1-3; Library Club, 1-3; FHA, 1-3; Library Assistant, 1-3



KENNETH MARION
CAMPBELL

Basketball, 1; Pep Club,
1-3; Spanish Club, 2, 3;
Senior Class Treasurer;
National Honor Society,
3; Spanish Award, 2; Stu-
dent-County Government
Representative, 2



LUCY ELIZABETH
CAMPBELL

Pep Club, 1; Library Club,
1; National Honor Society,
1-3; FHA, 2, 3; Historian,
3; FTA, 2, 3; Parliamen-
tarian, 3; Science Club,
2; Latin Club, 1, 2; Girls'
State Representative, 2;
Miss SHS, 2nd Runner-
up, 3; Miss Congeniality
3; Band, 1-3; Who's Who-
Most Talented

JEANETTE CARVER

Library Club, 1, 2; Library
Assistant, 2; Pep Club,
1-3; Senior Class Typist

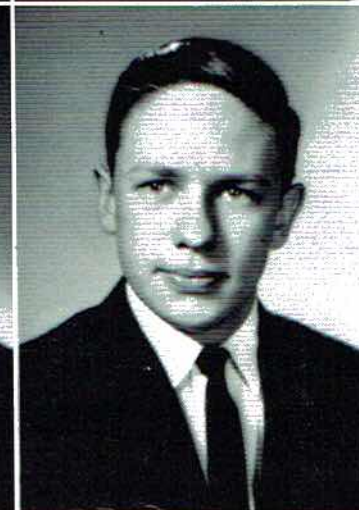


ANGELA CASH

Pep Club, 1-3; Library
Club, 1; Medical Careers,
3; Reporter, 3; National
Honor Society, 2, 3; Who's
Who-Most Cooperative;
Latin Club, 1, 2

BEN CHILDERS

D.O. Club, 2, 3



HARRY CLEMENS

Sportsman Club, 1-3; Pep
Club, 2, 3

HAYDEN H. COLLINS, JR.

Pep Club, 1-3; "S" Club,
1-3; Who's Who-Most
Handsome; Class Favorite,
3; Football, 1-3; Best
Lineman, 3



BITSIE COOK

Pep Club, 1-3; Medical
Careers, 3; Library Club,
3; FHA, 1

MIKE

Pep Cl
Vice-P
Counc

EDWA

FFA,

MICH
CO

D.O.
3

JUDY

FHA,
tiona
3; M
Scien
liam
Club
3; Pe
Acad
gate

MIKE COOK

Pep Club; D.O. Club; Vice-President; Student Council



SYLVIA COOK

Pep Club, 1-3; Library Club, 2, 3; FHA, 1



EDWARD M. CORNELISON

FFA, 1, 2; D.O., 2, 3



WILLARD CORNELISON

Sportsman Club, 1, 2; FFA, 1, 2; Vice-President, 2; Pep Club, 2; D.O., 3



MICHAEL EDWARD COULSON

D.O. Club, 2, 3; President, 3



EDDIE CUNNINGHAM

Pep Club, 1-3; Sportsman Club, 1-3; Student Council, 3; Who's Who Best Dressed, 3



JUDY KAY DAWSON

FHA, 1; FTA, 2, 3; National Honor Society, 2, 3; Medical Careers, 2; Science Club, 1-3; Parliamentarian, 3; Latin Club, 1, 2; Debate Team, 3; Pep Club, 1-3; Junior Academy of Science Delegate, 3



PATRICIA ANN DAWSON

Pep Club, 1-3; FHA, 1-3; Library Club, 3; Library Assistant, 3



LARRY EDWIN DERRICK

Pep Club, 1-3; President, 2, 3; Sportsman's Club, 1-3; Student Council, 3; Science Club, 3; Band, 1



THOMAS MONROE DERRICK

Sportsman's Club, 1; Band, 1-3; Pep Club, 1; Library Club, 1-3; Who's Who - Wittiest, 3



NANCY DOLBERRY

FHA, 1-3; Pep Club; Library Club



ANNIE DUDLEY

Pep Club, 1-3



CYNTHIA SUSAN DURHAM

Spanish Club, 2, 3; Pep Club, 1-3; Science Club, 1-2; Band, 1; Secretary 1; Medical Careers Club, 3; Annual Staff, 3; Wildcat Staff, 3; Debate Team, 3



CHARLES ANTHONY DUTTON

Pep Club, 1-3; "S" Club, 3



CHARLES ELLIOTT

"S" Club, 1-3; Basketball, 1-3; Pep Club, 1-3; Student Council, 2; Class Favorite, 1



HERSHELL EVANS

"S" Club, 1-3; Pep Club, 1-3; Basketball, 1-3; Football, 1-3; Track, 1



LANNY EVANS

Pep Club, 1-3; Sportsman's Club, 1-3; Spanish Club, 2, 3



HETTIE VIOLA FINNEY

Pep Club, 1-3; Library Club, 1-3; Reporter, 1, 3; Annual Staff, 1; Wildcat Staff, 1; Science Club, 1, 2



MARTHA CAROL FINNEY

Pep Club, 1-3; FTA, 3; FHA, 1, 3; Secretary, 3; Medical Careers Club, 2



ROBERT HOLLAND GAMBLE

Football, 1-3; Basketball, 1-2; Science Club, 2; Treasurer, 2; "S" Club, 1-3; President 3; Most Valuable Player, 3; Student Council, 3; Pep Club, 1-3



MYRON F. GARDNER, JR.

Band, 1; Sportsman's Club, 1-3; Secretary, 3; Pep Club, 2, 3; Office Assistant, 2, 3; Who's Who - Friendliest



C. W. GARNER

FFA; Pep Club



JOY GARNER

FHA, 1, 3; Pep Club, 3



JOHN R. GENTLE

"S" Club, 2, 3; Pep Club, 1-3; Basketball, 1-3; FFA, 1; Sportsman Club, 1



WADE ANTHONY
GENTLE

Football, 1-3; "S" Club,
1-3; Student Council, 2,
3; President of Senior
Class, 3; National Honor
Society, 3; Who's Who-
Most Cooperative; Student-
County Government Rep-
resentative, 2



JIMMY GILLIAM

"S" Club, 1-3; Pep Club,
1-3; FFA, Football, 1-3

JOYCE GLASS

FHA, Pep Club, 1-3 DO,
2; Reporter, 2



WILLIAM EARL GRAY

Pep Club, 1, 2; Sportsman's
Club, 1, 2; FFA, 1-3; Li-
brary Club, 1

JOHN McCOLLUM GREEN

Sportsman's Club, 1; Medi-
cal Careers Club, 2; Re-
porter, 2; Science Club,
1-3; Pep Club, 1-3; Na-
tional Honor Society, 3;
Band, 1-3; National Merit
Semifinalist, 3; Phi Zeta
Kappa, 3; All State Band,
2; Debate Team, 3



LANA ROSE GREENE

FHA, 1-3; Library Club,
1-2; Pep Club, 1-3

JERRY L. GRIDER

"S" Club, 1, 2; Basketball,
1, 2; Football, 1, 2; Pep
Club, 1-3; FFA, 1-3;
Sportsman's Club, 1, 2



MARTHA FARIS GRIDER

FHA, 1-3, Pep Club, 1-3

HERMAN EUGENE
GRIFFIN

Pep Club, 1-3; Wildcat
Staff, 3; Annual Staff, 3



PATSY ANN GRIGGS

FHA, 1, 2; Pep Club, 2, 3;
Medical Careers Club 3



CINDY GRIME

Transfer Student Apollo
Club, 1, 2; Photography
Club, 1; Y-Teens, 1, 2;
Science Club, 2; Pep Club,
3; FHA, 3; Library, 3



LINDA GUINN

Pep Club, 1-3; FHA, 1-3



ROBERT WALTER HAAS

Football, 1-3; Pep Club,
1-3; FFA, 1; "S" Club,
1-3



WAYNE HALL

Sportsman Club, 1, 2; Pep
Club, 1-3



BOBBY HAMMONS

D.O. Club



DWIGHT HANNERS

Transfer Student News-
paper Representative;
Model Club; Pep Club, 3



JACKIE KAY HARDIN

Pep Club, 1-3; FHA, 1, 2; Library Club, 1;



W. DONALD HARRINGTON

Sportsman Club, 1-3; President, 3; Pep Club, 1-3

LEROY

Sportsm

PAT HARTSELLE

Transfer Student; Tri Hi Y, 1; Spanish Club, 1; Class Secretary, 1; Class Favorite, 1; FHA, 2, 3; Vice-President, 3; President, 3; Pep Club, 2, 3; Secretary, 3; Alternate Miss FHA, 2; Miss FHA, 3; Homecoming Attendant, 2, 3; FFA Sweetheart, 3



DOROTHY CAROLYN HASTINGS

Pep Club, 1-3; Home Economics, 1, 2;

BETTY

Pep Cl
Club,
ant, 1,

STANLEY HASTINGS

FFA, 1-3; Pep Club, 1



LINDA SUE HESS

Pep Club, 1, 2; D. O. Club, 3; Reporter, 3

JOAN

FHA; P
Club

RUTH HESTER

FHA, 1; Pep Club, 1-3;



BILLIE LOIS HIGGINBOTHAM

Student Council, 1; Pep Club, 1-3; Home Economics, 1

SANFO
HO

Nation
1-3; V
Spanis
dent 2
FTA,
2, 3; S
"S" Cl
Who-N

LEROY HIGGINBOTHAM

Sportsman's Club, 3



JACK HILLIARD

Transfer Student, 4-H Club, 1; FFA, 3; Key Club, 2



BETTY JEAN HOGE

Pep Club, 1-3; Library Club, 1-3; Library Assistant, 1, 2



EUYLESS HOLCOMB

Pep Club, 1-3; FFA; D.O. Club



JOAN HOLCOMB

FHA; Pep Club, 1-3; D.O. Club



JOHN HOLDER

Pep Club, 1, 2; Football, 1; Science Club, 3; Sportsman's Club, 3



SANFORD HUNTER
HOLLAND

National Honor Society, 1-3; Vice President, 2; Spanish Club, 2, 3; President 2; Pep Club, 1-3; FTA, 1-3; Science Club, 2, 3; Student Council, 1; "S" Club, 1-3; Who's Who-Most Courteous, 3



DAVID E. HURT

Sportsman's Club, 1, 2; Pep Club, 1-3; Basketball, 1-3; "S" Club, 1-3; Science Club, 3



HOWARD FRANKLIN IVEY

National Honor Society, 1-3; "S" Club, 1-3; Pep Club, 1-3; Student Council, 2, 3; Vice-President Senior Class; Delegate to NHS State Convention



GERALDINE JOHNSON

Pep Club, 1-3

PEGGY

FHA, 2; Vice-P... Pep C... ing Q... Prettie

JEANETTE JOHNSON

FHA, 1-3



MARIEA ELAINE JOHNSON

Transfer Student; FHA, 1; Secretary, 1; Crisco Award, 1; Beta Club, 1; FTA, 1-3; President, 3; Pep Club, 2, 3; Band 1-3; 1st Lieutenant 1; Annual Staff, 3; Wildcat Staff, 3; Medical Careers Club, 3

KENN

Pep C... Scien... Star M

WENDELL JOHNSON

FFA, 1; Pep Club, 2



DANNY PAUL KENNAMER

Pep Club, 1-3; Sportsman's Club, 1-3; Wildcat Staff, 3; Annual Staff, 3

YVON

Pep C

RONALD LARRY KILLINGSWORTH

"S" Club, 1-3; FFA, 1-3; Football, 1, 2; Basketball, 1, 2



CAROLYN KIRKLAND

FHA, 1; Pep Club, 1-3; Library Club, 1-3; Medical Career Club, 3

CYN

Pep C... Club... 1; FH



MARY SUE LANSFORD

Pep Club, 1-3, FHA, 1; Science Club, 2, 3; Treasurer, 3; Medical Careers Club, 2; National Honor Society, 3; D. A. R. Good Citizenship Girl, 3; Who's Who - Most Studious; Junior Academy of Science Delegate, 2

PEGGY JEAN LANDS

FHA, 1, 2; Library Club, 2; Vice-President, 2, 3; Pep Club, 1-3; Homecoming Queen, 3; Who's Who - Prettiest, 3



RICHARD LUSK, JR.

FFA, 1, 2

KENNETH LEWIS

Pep Club, 1-3; Band, 1-3; Science Club, 2, 3; All Star Marching Band, 2



TOMMY WAYNE MANNING

FFA, 1, 2; D. O. Club, 2, 3; Pep Club, 1, 2

YVONNE LUSK

Pep Club, 2, 3; FHA, 1-3



GLORIA JEAN MARTIN

Band, 1-3; Pep Club, 1-3; Medical Careers Club, 2, 3

CYNTHIA ANN MARTIN

Pep Club, 1-3; Library Club, 1; Library Assistant, 1; FHA, 1

SCOTTY ROSS MARTIN

Pep Club, 1-3



JUDY MAYNOR

FHA; Pep Club, 1-3

SAMUEL McALLISTER

Pep Club, 1-3; FFA, 1



LAWRENCE NYE
McCOY, JR.

Pep Club, 1, 2

JOE PERRY McCRARY

Science Club, 1-3; Spanish Club, 1, 2; Pep Club, 1; National Honor Society, 2, 3; Debate Team, 3; Band, 1-3



CAROLYN ANN McKEE

Pep Club, 1-3; Treasurer, 3; Medical Careers Club, 2; FHA, 1, 3; Library Club, 3; Treasurer, 3; Library Assistant, 3; Representative to Library Convention, 3; Member of District VII Officers of Librarian

LINDA McLEMORE

Latin Club, 1, 2; Pep Club, 1-3; Wildcat Staff, 3; Annual Staff, 3; Student-County Government Representative, 2



PATSY JANE McNEILL

National Honor Society, 1-3; Pep Club, 1-3, FTA, 2, 3; Majorette, 1, 2, Head, 2; Science Club, 2; Reporter, 2; Wildcat Staff, 1; Annual Staff, 1; Spanish Club, 2, 3

THOMAS
MCNEIL

Student
dent, 3;
Society,
NHS Sta
Student
to Natio
Bangor,
2, 3; Lat
"S" Clu
1-3; Vic
Junior C
State, 2
Popular,
Best Blo
Most Va
turning,
ketball,

DIANA

Pep Clu

SUSAN

FHA; Pe

WAYNE

Preside
Class; P
Class; P
"S" Clu
3; FTA
2, 3; Na
ciety,
cil, 1-
urer, 2
Who's V
to Succ
Club, 3
1, 2

THOMAS WAYNE
MCNEILL

Student Council, 2; President, 3; National Honor Society, 2, 3; Delegate to NHS State Convention, 2; Student Council Delegate to National Conference in Bangor, Maine, 3; FTA, 2, 3; Latin Club, 1-3; "S" Club, 1-3; Pep Club, 1-3; Vice-President, of Junior Class, 2; Boys' State, 2; Who's Who Most Popular, 3; Football, 1-3; Best Blocking Back, 2; Most Valuable Player Returning, 2; Track 1; Basketball, 1-2



TERRY LAMAR MEEKS

Pep Club, 1-3; Spanish Club, 2; Student-County Government Representative, 2;



DIANA MICHAEL

Pep Club, 1-3; FHA, 1, 2



PAMELA MITCHELL

FTA, 2, 3; Band, 1, 2; 2nd Lieutenant, 1; 1st Lieutenant, 2; FHA, 1-3; Reporter, 3; Wildcat Staff, 1-3; Annual Staff, 1-3; Co-Editor, 3; Pep Club, 1-3; Senior Who's Who Wittiest; State Degree, Home Economics, 3; Wildcat Club, 1



SUSAN MITCHELL

FHA; Pep Club, 1-3;



MARGARET MURPHY

FHA, 1; Pep Club, 1, 2; D.O. Club, 2, 3; Treasurer, 3;

WAYNE MURRAH

President of Sophomore Class; President of Junior Class; Pep Club, 1-3; "S" Club, 1-3; Treasurer, 3; FTA, 2, 3; Spanish Club, 2, 3; National Honor Society, 2, 3; Student Council, 1-3; Secretary-Treasurer, 2; Class Favorite, 2; Who's Who Most Likely to Succeed, 3; Science Club, 3; Sportsman Club, 1, 2



JEANIE MUSE

Latin Club, 1-3; Science Club, 2; National Honor Society, 1-3; Pep Club, 1-3; Alternate Cheerleader, 2; Cheerleader, 3; Miss Scottsboro High School, 3; Student Council, 3; "S" Club, 2, 3; Jr. Academy of Science Delegate, 2

GAYLIA ANNETTE NASH

Library Club, 1-3; FHA, 1; Pep Club, 1-3



MARY HELEN NECKLAUS

Wildcat Staff, 3; Annual Staff, 3; Pep Club, 1-3; Latin Club, 1, 2; President, 1; Spanish Club, 2, 3; FTA, 1-3; National Honor Society, 1-3; Band, 1-3; Secretary 2, 3; Latin Medal, 1; Medical Careers Club, 3; Science Club, 2; Who's Who-Most Likely to Succeed, 3; Junior Academy of Science Delegate, 2; Editor of The Wildcat

KRISTIN

Science
Preside
1-3; Sp
FTA, 2
3; Nati
3; All S
All Sta
2; Banc
tenant,
3; Rem
Editor,
3; Assi
Who's

LORETTA PUTMAN NEELEY

Pep Club, 1-3; FHA, 1-3



PATSY NYGARD

Pep Club, 1-3; FHA, 1, 3

CARL

FFA, 1
FFA Re

SHIRLEY MARIE O'LINGER

FHA, 1, 3; Photographer, 3; Pep Club, 1-3; Medical Careers Club, 2; Library Club, 3



WILLIAM JEROME PARKS

Pep Club, 1-3; Student Council, 3; Secretary-Treasurer, 3; Science Club, 1, 2; President, 1, 2; National Honor Society, 3; Band, 1-3; Captain, 2, 3; Latin Club, 1, 2; Band Sweetheart, 2; All Star Marching Band, 2

SHELL

Pep C
Club,
urer,
FTA,

REBECCA LYNN PARSONS

Transfer Student Band, 1; Pep Club, 2, 3; Library Club, 2, 3; FHA, 1



GENNETTE DIANE PITTMAN

Pep Club, 1-3; Library Club, 2, 3; FHA, 1, 3

RAY

Pep C

KRISTIN POOLE

Science Club, 1-3; Vice-President, 1-3; Pep Club, 1-3; Spanish Club, 1, 2; FTA, 2, 3; Vice-President, 3; National Honor Society, 3; All State Band, 2, 3; All Star Marching Band, 2; Band, 1-3; 2nd Lieutenant, 2; 1st Lieutenant, 3; Reminder Staff, 3, Co-Editor, 3; Wildcat Staff, 3; Assistant Editor, 3; Who's Who Best Dressed



JO ANNE PRECISE

FHA, 1; Pep Club, 1-3; Library Club, 3

CARL E. PRICHETT

FFA, 1-3; Pep Club, 1; FFA Reporter, 3



CHARLES W. PRICHETT, JR.

FFA, Pep Club

SHELIA FAY RAY

Pep Club, 1-3; Latin Club, 1; Secretary-Treasurer, 2; Library Club, 1; FTA, 3



CECIL REED

"S" Club, 1, 2; FFA, 2, 3; Football, 1, 2; FFA Officer, 3

RAY REED

Pep Club; D.O. Club



JACQUE RIDLEY

Pep Club, 1-3; Library Club, 1; Science Club, 3; FTA, 3; Latin Club, 1, 2; Secretary of Senior Class

LARRY R. ROBERTS
FFA, 1-3; Pep Club, 3



WACO ROBERTS
D.O. Club



BETT
FHA,
1-3;
city
1, 2;
Club

BOBBY RAY RODGERS
FFA, 1; Pep Club, 1;



REBECCA RYAN



Pep Club, 1-3; Cheer-
leader, 1-3; Head Cheer-
leader, 3; FHA, 1-3;
Home Economics Degree,
2; FTA, 2-3; Wildcat
Staff, 2; Annual Staff, 2;
Who's Who, Most Popular;
FHA Parliamentarian, 3;
"S" Club, 1-3

FRAN
Pep
Libra

ANITA SANDERS
Transfer Student; Library
Club, 1-3; Library Assist-
ant, 1; FHA; Pep Club;
2-3; Glee Club, 1



LOIS ANN SANDERS



Beta Club, 1; Glee Club,
1; FHA, 1-3; Pep Club, 3

CARO
Libra
Assis
1-3

JO ANNE SHARP
Pep Club, 2-3; FHA, 1-2



BRAD SHELTON, JR.



Student Council, 1-3;
Secretary-Treasurer, 1;
Vice-President, 2; Na-
tional Honor Society, 2-3;
President, 3; Science Club
3; Pep Club, 1-3; Sports-
man, 1-2; "S" Club, 1-3;
FTA, 2-3

SALL
FHA,

BETTYE SHERRELL

FHA, 1; Library Club, 1-3; Library Club Publicity Officer; Pep Club, 1, 2; Medical Careers Club, 3



HARVEY SHRADER

FRANCES SMITH

Pep Club, 2, 3; FHA, 1; Library Club, 2, 3



SARAH STEWART

Transfer Student FHA, 1, 2; Pep Club, 2, 3; Girls' Chorus, 1, Beta Club, 2; Library Club, 3

CAROLYN STILLS

Library Club, 1-3; Library Assistant, 2; Pep Club, 1-3



MARTHA STUART

Library Club, 1; Pep Club, 1-3; Latin Club 1; Science Club, 2, 3; Secretary, 2, 3; FTA, 2, 3; Treasurer, 3; National Honor Society, 3; D. A. R. History Award, 2; SCOAG Delegate, 3; Student Council, 1

SALLY SULLIVAN

FHA, 1, 3



HUGH L. SUMNER, JR.

Pep Club, 1-3; Wildcat Staff, 2, 3; Annual Staff, 2, 3

CLAYTON
SWEARENGIN

FFA Treasurer, 2



JIMMIE LEE TANNER

FHA, 1; Library Club,
1-3; Pep Club, 1-3



DOUGLAS KENTWELL
THORNTON

Pep Club, 1, 2; Library,
1, 2; Medical Careers, 1



LINDA GAIL WALLACE

Pep Club, 1-3; National
Honor Society, 2, 3; Sec-
retary, 3; FTA, 3; "S"
Club, 2, 3; Cheerleader,
2, 3; Spanish Club, 2;
Class Favorite, 2; Student
Council, 2; Who's Who -
Best All Around



BARBARA WALLINGSFORD

FHA, 1-3; Pep Club, 2, 3



JAKE WALLINGSFORD

Pep Club, 1-3; "S" Club,
1-3; FFA, 1-3; Vice-
President; Football, 1-3;
FHA Sweetheart, 3



MARVA JO WATTS

Transfer Student; Office
Assistant, 1; Pep Club, 2,
3; Library Club, 3; Library
Assistant, 3



ALICE CULVER WEBB

Pep Club, 1-3; Library
Club, 1-3; Medical
Careers; D.O. Club; FHA;
Wildcat Staff, 2



GLÉNDÁ SUE WEEKS

Pep Club 1, 2, 3; Library Club 3



NORMA JEAN WHITE

Pep Club 1, 2, 3; Spanish Club 1, 2; National Honor Society 2, 3; Library Club 1, 2, Reporter 2; FTA 1, 2, 3; FHA 1, 2, 3, Parliamentarian 2, President 3, State Degree 3, National FHA Chorus 3; Co-ed Magazine Correspondent 2, 3; Treasurer of Junior Class; "Miss SHS" 3rd Runner-up 3; Wildcat Staff, 3; Reminder Staff 3



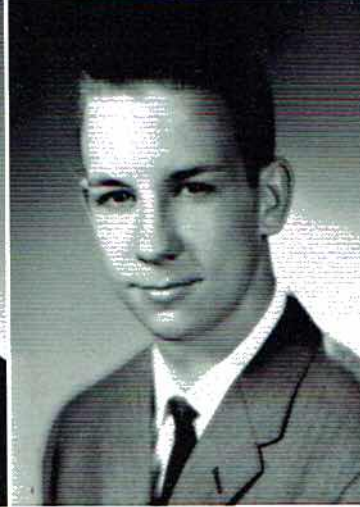
CHARLES FRANKLIN WILSON

Pep Club 1, 2, 3; Science Club 3; Who's Who-Most Studious 3



ROGER DALE WILSON

Pep Club 1, 2, 3



CAROLYN WOODALL

Pep Club 1, 2, 3; Library Club 1, 2, 3; Library Assistant 1



RUBY MARIE WOODALL

FHA 1, 3; Pep Club 1, 2, 3; Library Club 3



CHARLES WOOSLEY

Pep Club 1, 2, 3; "S" Club 1; Sportsman Club 1, 2; Science Club 1, 2; FTA 2, 3; Basketball 1; Student Council 1; Spanish Club 2, 3



BARBARA LOU WYNN

Library Club, 1-Treasurer, 2-Secretary, 3-President; Pep Club 1, 2, 3; Library Assistant 1, 3



Graduation



AFCEA JUNIOR FELLOWSHIP AWARD - SCIENCE AWARD
Johnny Mac Green



SCHOLARSHIP AWARD
Phyllis Wilborn Baker



AFCEA JUNIOR FELLOWSHIP AWARD
Wayne Murrah



DANFORTH AWARD
Howard Ivey - Jacque Ridley



SCHOLARSHIP AWARD
Howard Ivey



ATHLETIC AWARD
Wade Gentle



BALFOUR - HOME ECONOMICS
Lucy Campbell



GOOD CITIZENSHIP - SCHOLARSHIP AWARD
Mary Sue Lansford

Honors and



CIVITAN AWARD
Tommy McNeill



BUSINESS EDUCATION
Linda Wallace



F. T. A. SCHOLARSHIP - CRISCO AWARD
Martha Jane Bramblett



ENGLISH MEDAL
Kenneth Campbell



AMERICAN LEGION AWARD
Judy Dawson - Charles Woosley



LIBRARY AWARD
Bettye Sherrill

Recognition

GOLD SEAL AWARD - Lucy Campbell, Wade Gentle

SILVER SEAL AWARD - Kris Poole, Howard Ivey, Mary Helen Necklaus, Mary Sue Lansford, Wayne Murr, Bunnie Bradford, Johnny Mac Green, Carolyn Stills, Martha Finney, Phyllis Wilborn Baker, Charles Wilson, Norma Jean White, Charles Woosley, Judy Dawson, Linda Wallace, Joe McCrary, Mickey Boles, Eddie Cunningham, Sam Holland, Linda McLemore, Tommy McNeill, Brad Shelton, Jeanie Muse, Kenny Campbell, Martha Stuart,

RECOGNITION AS CO-EDITORS OF "THE REMINDER"
Business Manager

Kris Poole - Pam Mitchell
Danny Kennamer

RECOGNITION AS EDITOR OF THE "WILDCAT"

Mary Helen Necklaus

Senior Snapshots

Float . . . Rings . . . Trip . . . Magazines

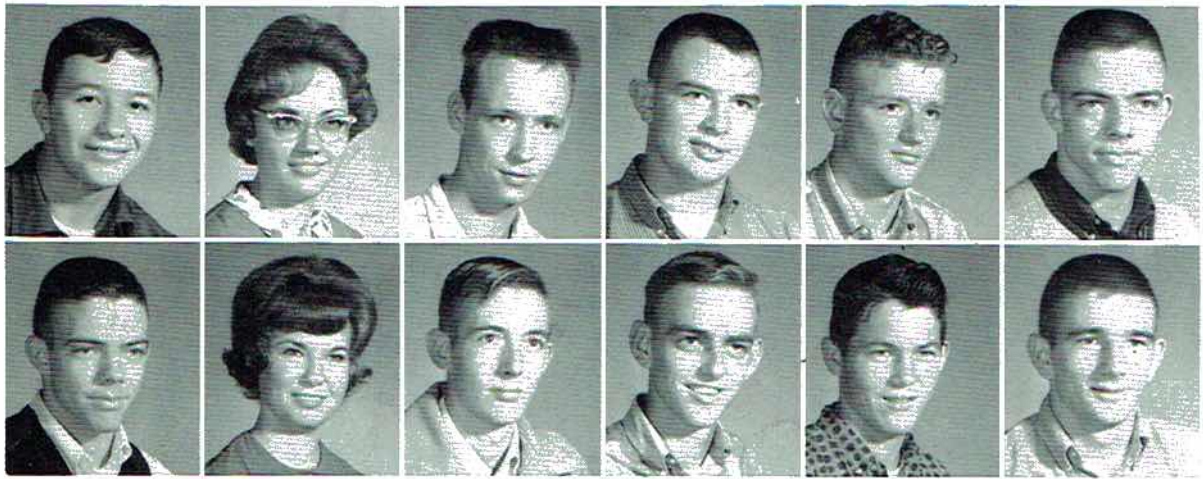




Juniors

President - ROBERT BONNER
Vice-President - DONALD WEBB

Secretary - RITA RUDDER
Treasurer - ROSA REID



FIRST ROW: Johnny Adams, Brenda Allen, Wendell Amos, David Anderson, Eddie Arnold, Ronald Atchley, SECOND ROW: Russell Atchley, Laura Atkins, Eddie Ray Austin, George Barber, Dwain Bass, Ray Bass.



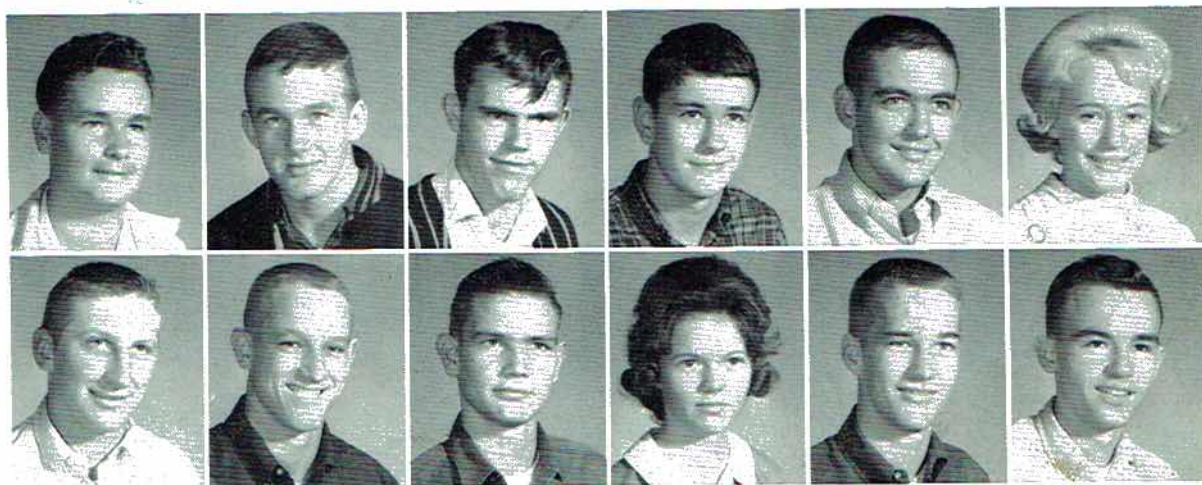
Earl Bishop
Buddy Bogue
Robert Bonner
Virginia Bradford
Eileen Brooks

Barbara Brown
Clyde Butler
Jan Campbell
Albert Carlton
Ann Carter

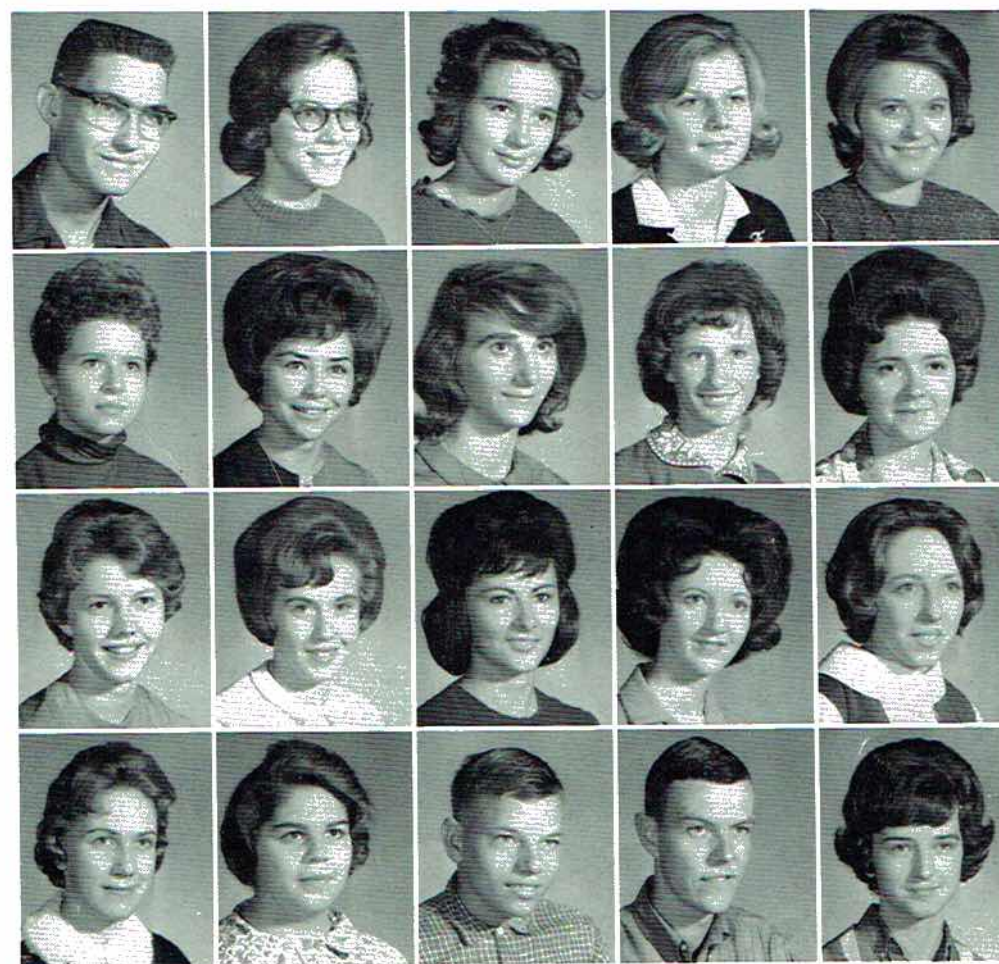
Jerry Carter
Dusty Cash
Sue Cash
Lewis Chance
Tommy Chandler

Mary Rose Clark
James Clemens
Nancy Collins
Gerald Combs
Carol Cordell

Juniors Anxiously Await Their Senior Year



FIRST ROW: Alvin Cornelison, Jack Cornelius, Robert Coulson, Charles Cruce, James Dawson, Brenda Day, SECOND ROW: Larry Dean, Charles Derrick, Joe Pat Dudley, Shirley Eakin, Terry Eakin, Bobby Eastham.



Gerald Edmonds
Diana Evans
Louise Frazier
Martha Frazier
Susan Gentle

Lynn Gladish
Jewel Glass
Doris Gossett
Linda Gossett
Martha Green

Janice Gross
Judy Gwathney
Betty Hall
Monza Hall
Beverly Hancock

Lila Harris
Sue Ellen Harris
Elmer Hayes
Donnie Hess
Dorothy Hicks



FIRST ROW: Larry Higginbotham, A. B. Holcomb, Ralph Holland, Savannah Isbell, Linda Ivey, Ann Jacobs, SECOND ROW: Otis Jeffery, Bobby Johnson, Sandra Johnson, Wayne Johnson, Shirley Johnston, Claude Judge.

Roger Junior
Joan Keasling
Charles Keller
Charles Kennamer
Wanda Kennamer



Barbara Adams Kent
Janice Kilgro
Judy Killingsworth
Lavonne Kirby
Carolyn Lanier



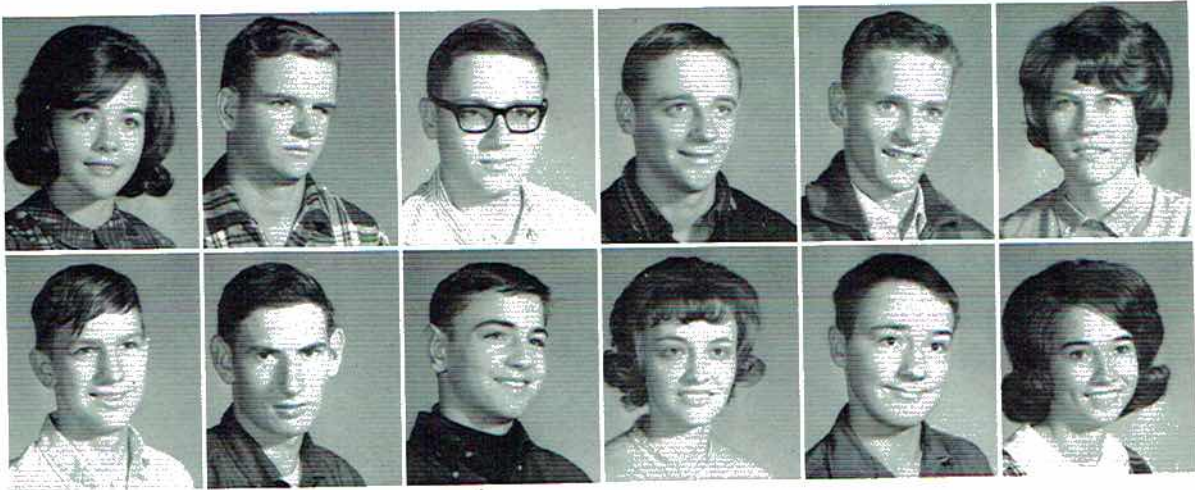
Carol Latham
George Lewis
Joyce Loyd
Barbara Maples
Mary Ann Matthews



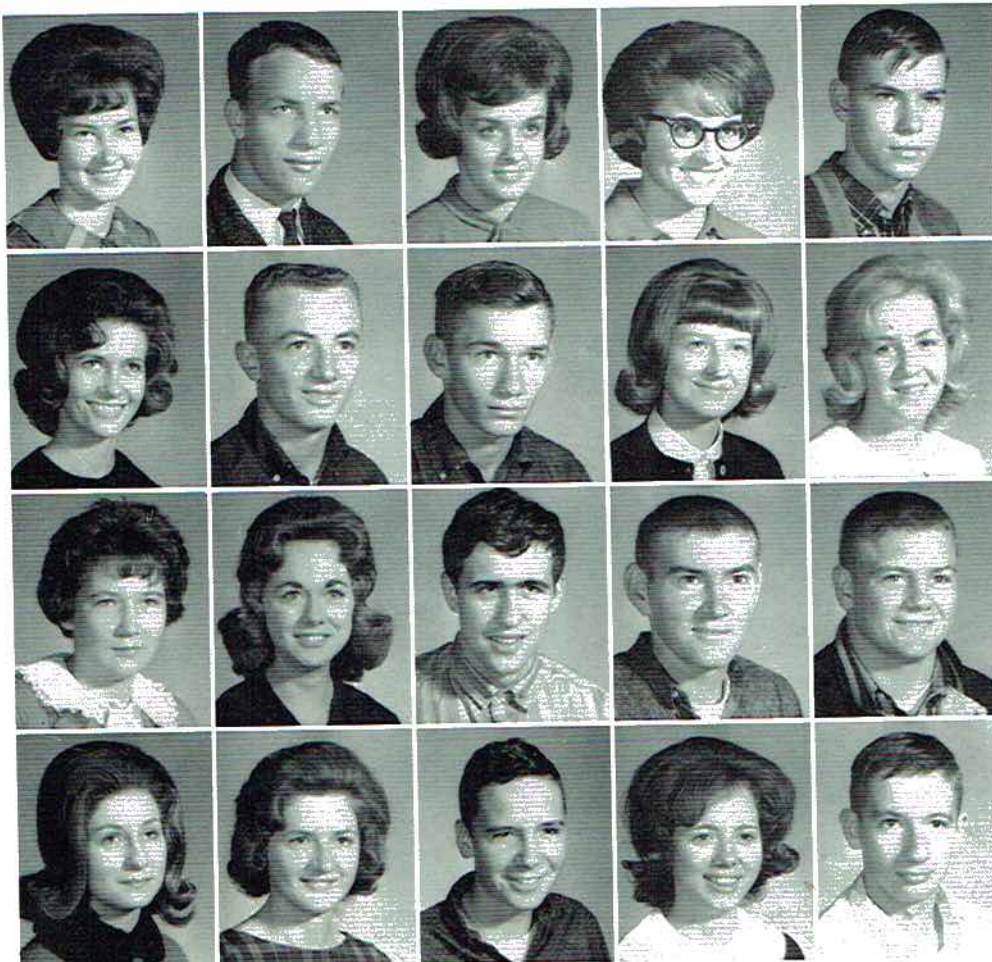
Virginia Matthews
Gary McBride
Linda McCoy
Larry Mitchell
Wayne Murray



Juniors Are Active Club Members



FIRST ROW: Sue Neyman, Larry Nippers, Lewis Page, Clay Peacock, George Pipes, Linda Porter, SEC-
 OND ROW: Larry Potter, Charlie Precise, Bill Reedstrom, Rosa Reid, Jimmy Renslow, Carolyn Richie.



Brenda Roberts
 Terry Roberts
 Carolyn Robertson
 Jean Rodgers
 Tommy Rorex

Rita Rudder
 Billy Joe Saint
 Benford Sanders
 Mickey Selby
 Carolyn Sharp

Carolyn Shelton
 Sue Slater
 Edward Smart
 John Smart
 Larry Smart

Carolyn Smith
 Patsy Smith
 Spencer Smith
 Shirley Southard
 Gerald Steeley

Tommy Stevenson
 Jo Ann Stewart
 Mickey Stewart
 Mary Elizabeth Sumner
 Fred Swearingin



Sanders Tally
 Nancy Tate
 Sue Thompson
 Gordon Tubbs
 Kenneth Turner



William Utley
 Floyd Vaught
 Linda Venable
 Patricia Venable
 Ray Venable



Juniors Stand Out in Athletics



Nancy Walker
 Sandra Wann
 Larry Ward
 Leah Watts
 Caroline Weavil



Billy Webb
 Billy Ray Webb
 Donald Webb
 Patsy Webb
 Brenda Weeks



Patsy White
 Dorothy Whitehead
 Barbara Wilborn
 Dwayne Wilkerson
 Joyce Wilkerson



Glenn Williams
 Mike Williamson
 Arnold Willmon
 Wayne Wooden
 Carlos Woosley



Sophomores

President - ROBERT HESTER
Vice-President - DIANE BRANDON

Secretary - RONALD DOLBERRY
Treasurer - JERRY CHRISMAN

Billy Fred Adams
 Sarah Airheart
 Eddie Akin
 Lenell Amos
 Donald Baggett



Linda Bass
 Donald Beard
 Marsha Bellomy
 Barbara Bierman
 Kermit Bolton



Donald Bradford
 Linda Bradford
 Thomas Bradford
 Diane Brandon
 Peggy Brooks



Docky Campbell
 Roy Cash
 Patricia Chandler
 Linda Chapman
 Jerry Chrisman



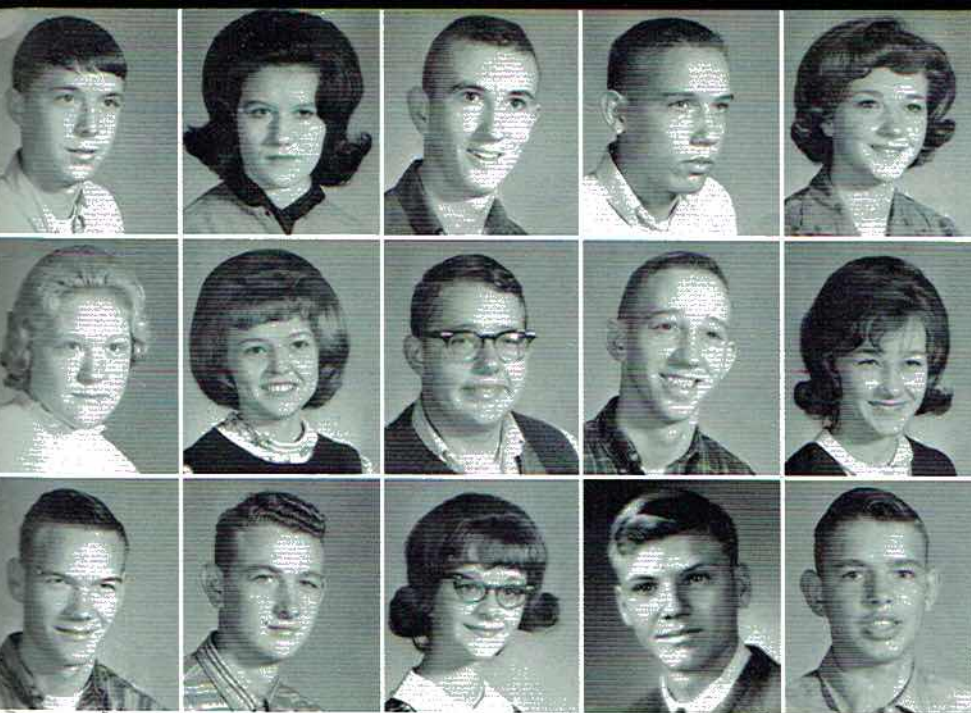
Johnny Conner
 Bobby Cornelison
 Judy Cornelison
 Linda Cornelison
 Melvin Cornelison



Nancy Cornelison
 Steve Coulson
 Billy Cowley
 David Crump
 Carolyn Culver



Diane Davis
 Judy Dawson
 Larry Dawson
 Linda Dawson
 Janie Day



Danny Dew
 Brenda Dicus
 Billy Joe Dobbins
 Ronald Dolberry
 Judy Dudley

Linda Dudley
 Patty Sue Eakin
 Wayne Edmonds
 Mickey Elliott
 Brenda Evett

Claude Evett
 Daniel Evett
 Paulette Ferguson
 Hank Frazier
 David Gamble

Sophomores Dream of Graduation in '67

Marlene Gamble
 Fernell Gass
 Clifford Gilliam
 Janice Goins
 Ronnie Goldston



Jenny Green
 Bobby Grider
 Diane Grider
 Regina Grider
 Ruby Guthrie



Frank Haas
 Brenda Hall
 Peggy Hambrick
 Miles Hammon
 Ronnie Hart



Bobby Hastings
 Helen Hastings
 Martha Helms
 Robert Hester
 Kenneth Higginbotham



Jim D. Hill
 Haden Hodges
 Jesse Hoge
 Mabel Hoge
 Elizabeth Holcomb



Emmett Holder
 Jones Holt
 Betty Rose Hurt
 Paulette James
 Danny Johnston



Diane Jones
 Robert Hooks
 Charles Keel
 Carol Keller
 Larry Kirkland



Woody Lansford
 Doyle Ledbetter
 Jerry Ledbetter
 Jo Ann Lindsey
 Janet Little



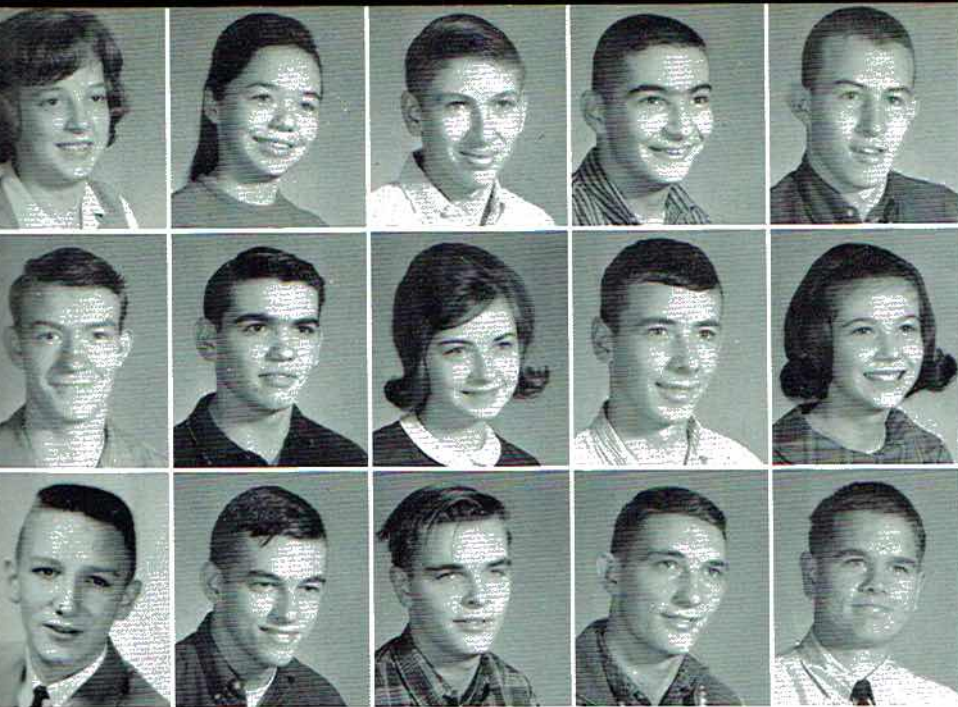
Celia Long
 Mildred Lusk
 Paul Lusk
 Nancy Lynch
 Bruce Manning



Edna Marsh
 Sylvia Martin
 Jimmy Matthews
 Joan McAllister
 Bill McCamy



Annie McCrary
 Danny McCrary
 Debra Merritt
 Leonard Miller
 Linda Miller



Wanda Miller
 Billie Morris
 Gary Morris
 Keith Murner
 Billy Nichols

Eddie O'Linger
 Ronald Osborne
 Linda O'Tenger
 Billy Pace
 Linda Page

George Parks
 Tommy Perkins
 Jesse Perry
 Marvin Phillips
 Roger Pierce

Sophomores Outnumber Juniors and Seniors

Randy Pittman
 Jackie Poland
 Glenn Primm
 Doris Prince
 Larry Proctor



Betty Reed
 Linda Roberts
 Rodney Rodgers
 Beuna Rogers
 Thomas Saint



Linda Sanders
 Delbert Sharp
 Steve Sherwood
 Debbie Simmons
 Patricia Simmons



Betty Sisk
 Ina Sisk
 Brenda Skelton
 Glenda Smith
 Judy Smith



Brindle Stewart
 Bruce Stewart
 Jerry Stewart
 Janie Swaim
 Linda Sue Talley



Bobby Tally
 Audrey Tate
 Brenda Thomas
 Betty Tidwell
 James Tidwell



Joyce Treece
 Charles Utter
 Alvis Wales
 Douglas Ward
 Faye Warren



Sophomores Find Rewards for Their Study



Jerry Webb
 Paul Weeks
 Susie Weeks
 Arnold Wheeler
 Larry White



Jim Wilborn
 Carol Wilkerson
 Susan Wilkinson
 Billy Ray Williams
 Mary Williams



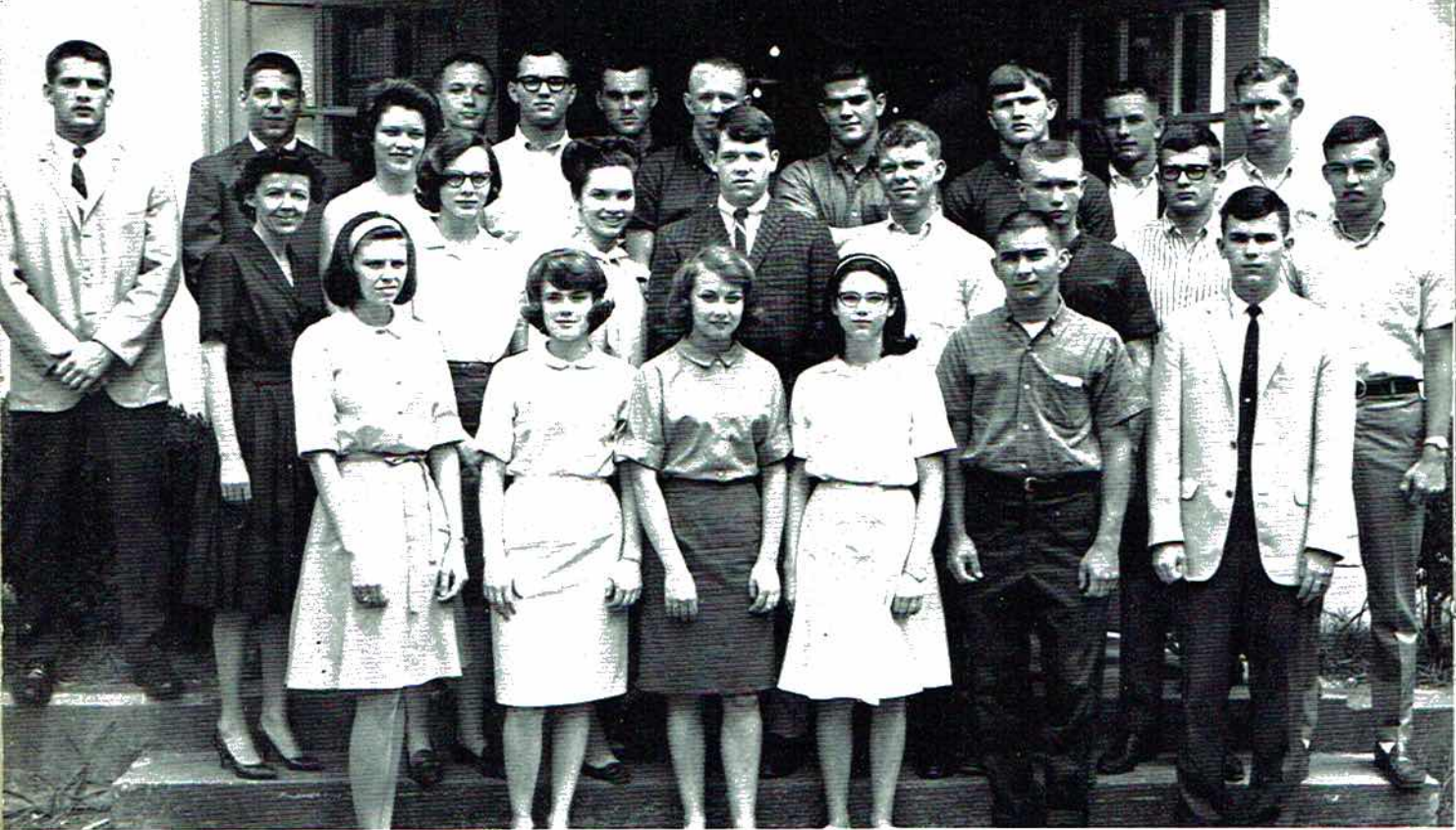
Charles Wilson
 Tommy Wilson
 Gerald Winger
 Joan Wise
 Betty Womack



Levi Womack
 Billy Wright
 Donald Wright
 Kay Wynn
 Doris York



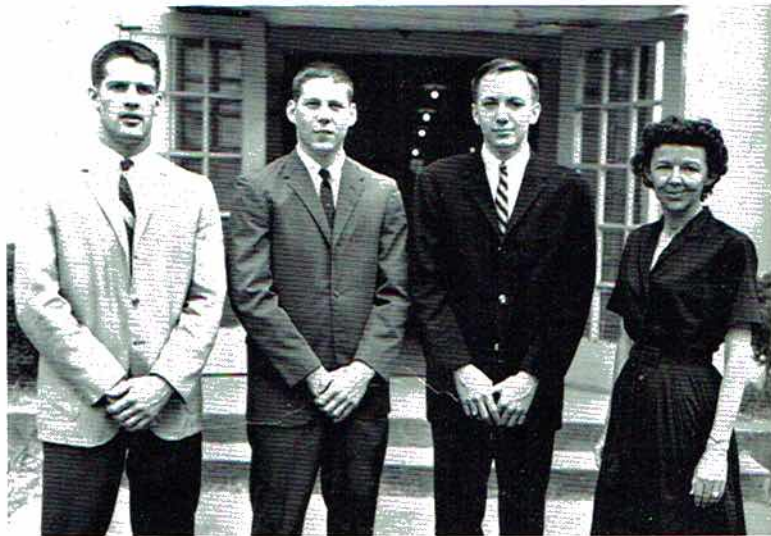
Organizations



SHS Student Council



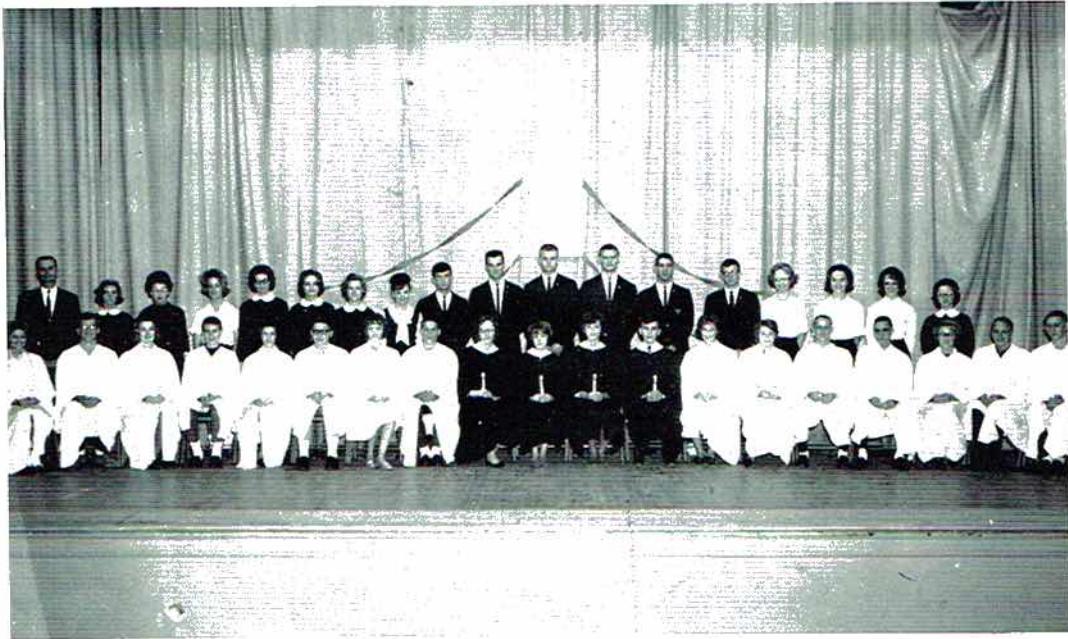
SHS Student Council serves as the voice for each student. Representatives are chosen from each home-room. Members: Tommy McNeill, Clyde Butler, Bill Parks, Howard Ivey, Donald Webb, Glenn Williams, Donnie Baggett, Docky Campbell, Wade Gentle, Tommy Perkins, Brad Shelton, Mike Cook, Ralph Holland, Larry Derrick, Jeanie Muse, Diana Evans, Doris York, Wanda Kennamer, Nancy Lynch, Linda Page, Keith Murner, Larry Ward.



COUNCIL OFFICERS:

Tommy McNeill, President
 Clyde Butler, Vice-President
 Bill Parks, Secretary-Treasurer
 Mrs. Fred Sanders, Sponsor

National Honor Society



OFFICERS: Brad Shelton, President; Howard Ivey, Vice-President; Linda Wallace, Secretary; Martha Bramblett, Treasurer; Mr. Pendergrass, Sponsor.

MEMBERS: Mary Sue Lansford, John Green, Kris Poole, Kenneth Campbell, Rita Rudder, Lewis Page, Rosa Reid, Clyde Butler, Diana Evans, Wanda Kennamer, Joyce Loyd, Larry Ward, Nancy Collins, Susan Gentle, Charles Derrick, James Clemons, Martha Stuart, Bill Parks, Wade Gentle, Bunnie Bradford, Judy Dawson, Patsy McNeill, Angela Cash, Mary Helen Necklaus, Phyllis Baker, Norma White, Sam Holland, Howard Ivey, Wayne Murrah, Joe McCrary, Tommy McNeill, Brad Shelton, Lucy Campbell, Jeanie Muse, Linda Wallace, Martha Bramblett.



*Future
Teachers
of
America*



Elaine Johnson, President;
Kris Poole, Vice-President;
Mrs. Oni Armstrong, Sponsor;
Martha Stuart, Treasurer;
Martha Bramblett, Secretary;
Lucy Campbell, Parliamentarian;
Bunnie Bradford, Historian



Club M
Ann C
Brewer
art, W
neth L



Science Club



Miss Lilly Porter, Sponsor
Sam Holland, President
Kris Poole, Vice-President
Martha Stuart, Secretary
Mary Sue Lansford, Treas.
Judy Dawson, Parliamentarian



Club Members: Caroline Weavil, Diana Evans, Lewis Page, Susan Gentle, Ann Carter, Joyce Loyd, Janice Gross, Charles Kennamer, John Holder, Jim Brewer, Charles Wilson, Larry Derrick, Sam Holland, Kris Poole, Martha Stuart, Wayne Murrah, Mary Sue Lansford, Charles Woosley, Jacque Ridley, Kenneth Lewis, Joe McCrary, Judy Dawson, David Hurt, John Green, Brad Shelton.





Selling ads for the annual is a big job but lots of fun!

Reminder Staff

The final result of the Reminder staff's daily work is before your eyes. Putting together a yearbook involves much hard work and brain-racking, but the finished product always brings a great deal of satisfaction to those who helped assemble it. This year was no exception. From the Reminder staff comes the yearbook, binding together the elements of our school life. Staff members are: Kris Poole, Pam Mitchell, co-editors; Rita Rudder, assistant editor; Norma White, organizations; Elaine Johnson, assistant business manager; Danny Ken-namer, business manager; Susan Durham, features; Bunnie Bradford, Seniors; Mary Helen Necklaus, theme; Linda McLemore, Sophomores and Juniors; Hugh Sumner and Herman Griffin, sports.



Our sponsor, Mrs. Broome worked dili-gently with the editors to plan the annual. Another daily chore was the task of drawing up individual pages for the Reminder.





Library Club



The purpose of the Library Club is to promote a greater interest among the students in the use of library services, to stimulate reading interests, and to improve the library service at SHS.

President - - - - - Barbara Wynn
 Vice-President - - - Peggy Lands
 Secretary - - - - - Sue Cash
 Treasurer - - - - Carolyn McKee
 Publicity - - - - - Hettie Finney
 Sponsor - - - - Mrs. Charles Heath





Beverly Hancock, Nancy Tate, Dianna Evans, Joyce Loyd, Ann Carter, Nancy Collins, Jan Campbell, Wanda Kenamer, Rosa Reid, Monza Hall, Mickey Stewart, Ralph Holland, Johnny Adams, Larry White

Spanish Club

La Amistad

The purpose of the Spanish Club is to promote better understanding between the United States and Latin America and to become better acquainted with the customs and habits of our southern neighbors.



OFFICERS

President - - - - - Wanda Kenamer
 Vice-President - - - - - Diana Evans
 Sec. - Treasurer - - - - - Beverly Hancock
 Sponsor - - - - - Mrs. Jan Roberts



Getting son, Da Lemore



Checking ing Mana Business M



Page Edit Mitchell, hard at w



Getting the Wildcat to press is a big job for staff members Hugh Sumner, Herman Griffin, Bunnie Bradford, Elaine Johnson, Danny Kennamer, Norma Jean White, Mary Helen Necklaus, Pam Mitchell, Kris Poole, Rita Rudder, Linda McLemore, and Susan Durham.



Checking finances are Advertising Manager Norma White and Business Manager Rita Rudder.



Mrs. Wallingsford, sponsor, Checks with Assistant Editor Kris Poole and Editor Mary Helen Necklaus.



The Life of Riley! Sports Editor Hugh Sumner and Assistant Herman Griffin.



Page Editors Elaine Johnson, Pam Mitchell, and Bunnie Bradford are hard at work.

Wildcat Staff



Reporters Danny Kennamer and Susan Durham get the story from Linda McLemore.



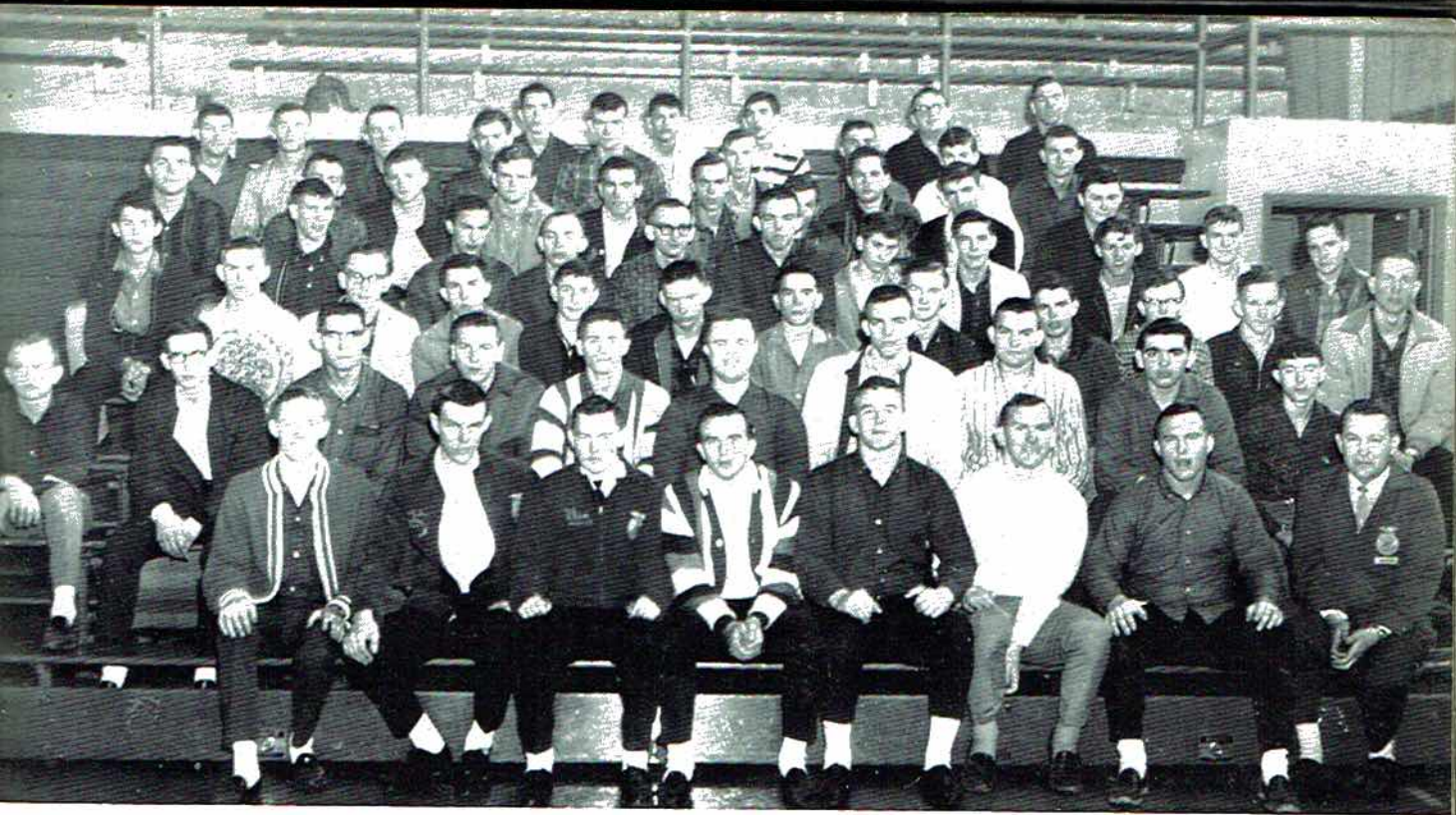
*Future
of*



*Homemakers
America*

Mrs. Doran
Ingram, Sponsor





*Future Farmers
of America*



Wiley B. Hopper,
Club Sponsor



Club Officers: Carl Pritchett, Reporter; Donnie Hess, Secretary; Jack Cornelius, President; Jake Wallingsford, Vice-President; Cecil Reed, Sentinel



Library Assistants: Judy Dudley, Janice Goins, Betty Tidwell, Carolyn McKee, Judy Nell Dawson, Diane Pittman, Nancy Cornelison, Patricia Dawson, Marva Watts, Barbara Wynn, Betty Sherrell, Joan McAllister

SHS Assistants



Office Assistants Rodney Bias, James Brewer, Jody Gamble, Myron Gardner, Donald Webb, James Clemons with school secretary Mrs. Nelson. Not pictured is Glenda Bradford.



Laboratory Assistants Charles Woosley, Scotty Martin and Sam Holland

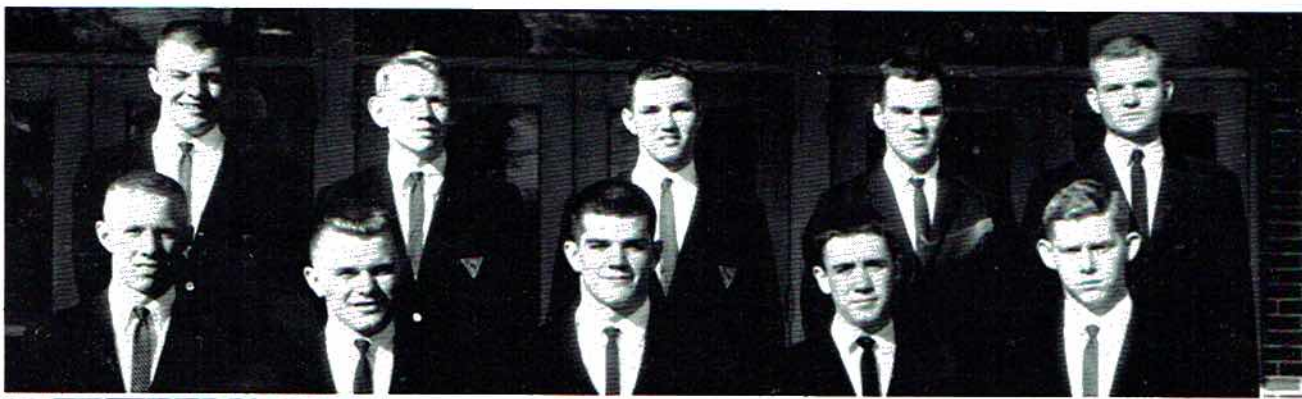
Medical Careers Club

The Medical Careers Club is sponsored by the local Medical Auxiliary with one of the members of that organization serving as sponsor. The club serves to acquaint the members with the numerous and varied opportunities available in the medical field. Club sponsor is Mrs. Joe Lee.



Club Officers: Clyde Butler, President (not pictured); Nancy Tate, Vice-President; Bunnie Bradford, Secretary-Treasurer; Angela Cash, Reporter





"S" Club

Club Sponsors: Coach Q. K. Carter, Coach John Meadows
 Honorary Members: Cheerleaders Rebecca Ryan, Linda Wallace,
 Jeanie Muse, Rosa Reid, Nancy Collins, Rita Rudder, Linda
 Miller, Linda Chapman



Club Members: Seniors--Hayden Collins, Joe Barnes, Jody Gamble,
 Howard Ivey, Wayne Murrah, Micky Boles, Johnny Gentle, Wade
 Gentle, Terry Brandon, David Hurt, Brad Shelton. Juniors--Donald
 Webb, Glenn Williams, Mike Williamson, Mickey Stewart, Ralph
 Holland, Jack Cornelius, Ronald Atchley, Russell Atchley, Clyde
 Butler, Clay Peacock, Gary McBride, Jerry Judge.



Club
 Porch
 Office
 Presid
 Vice-
 Murph
 Linda

*V. J. E.
Club*



Club Coordinator J. R. Porch
Officers: Mickey Coulson, President; Mike Cook, Vice-President; Margaret Murphy, Treasurer; Linda Hess, Secretary



Members: Bobby Bradford, Terry Eakin, Nancy Walker, Otis Jeffery, Larry Mitchell, Mike Cook, Mickey Coulson, Lila Harris, Margaret Murphy, Betty Hall, Joyce Glass, Linda Hess, Robert Coulson, Sandra Wann, Sanders Talley, Jimmy Renslow, Tommy Manning, Bobby Hammonds, Waco Roberts, Euyless Holcomb, Lewis Chance, Ray Reed, Billy Jack Brewster, Joe Pat Dudley, Willard Cornelison, Tommy Chandler.



Pep Club officers: Carolyn McKee, Treasurer; Pat Hartselle, Secretary; Mrs. William Sloan, sponsor; Carlos Woosley, Vice-President; Larry Derrick, President.

Pep Club

The Pep Club is a vital part of school spirit. It boosts the school teams in every effort. The Pep Club is a fine example of good sportsmanship of SHS.



1964-65
Wallace

REBECCA
Senior H
Cheerlea



1964-65 Cheerleaders: Rita Rudder, Rosa Reid, Nancy Collins, Rebecca Ryan (head), Linda Miller, Jeanie Muse, Linda Wallace, Linda Chapman

REBECCA RYAN,
Senior Head
Cheerleader



MRS. VIRGINIA
SLOAN,
Cheerleader Sponsor

Cheerleaders

1964-65

LINDA WALLACE,
Senior Co-Head
Cheerleader

JEANIE MUSE,
Senior





Marching Band Activities

"PRACTICE makes perfect" was displayed by the band members every afternoon after school during football season. All music and maneuvers were entirely memorized for the half-time precision shows. Besides performing for football games, the band provided music and musicians for pep rallies, the Homecoming parade, and the Christmas parade. The band competed in the Tri-State Marching Contest and received an "excellent" rating.

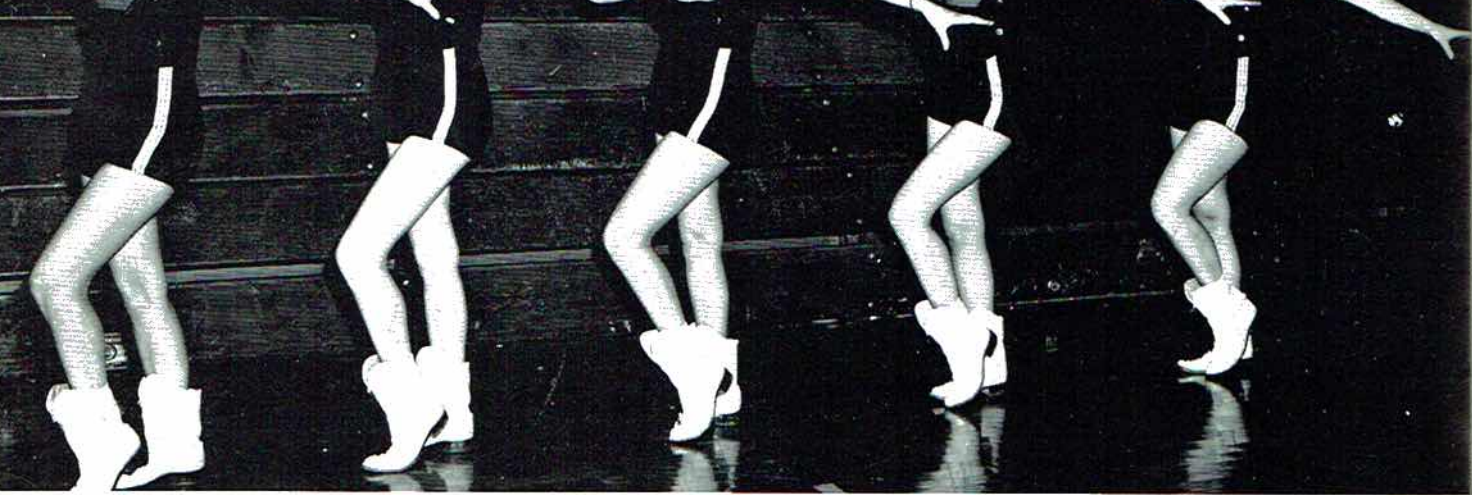
School Band



Concert Band Activities

Under the leadership of Mr. Jack Cox all 86 members of the band participated in the District Band Contest. They presented a winter concert and a spring concert. At the spring concert various awards were given. The final performance of the band was at the commencement exercises.

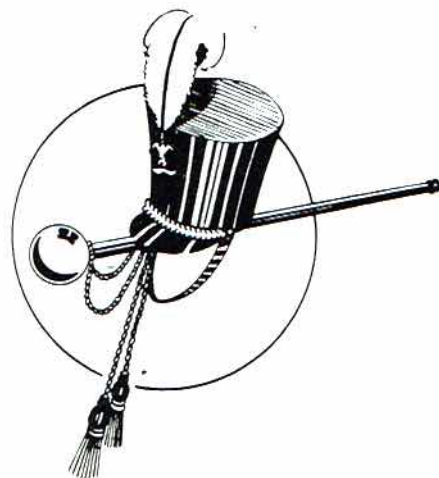
The band is a training organization for students interested in advanced musicianship and concert performance. The band teaches cooperation and team spirit and gives its students a chance to participate in the world of music.



1964-65 Majorettes: Bunnie Bradford, Becky Barclay, Suzanne Sloan, Linda Bankston, Sue Neyman



JOHN FRED ARMSTRONG,
Drum Major



BUNNIE BRADFORD, Head
Majorette

*Majorettes
and
Drum Major*

1964-65



BECKY BARCLAY

1964-65 Band Officers:

Bill Parks, Captain
Mary Helen Necklaus,
Secretary
Jack Cox, Director
Kris Poole, 1st Lieutenant



Band snapshots were taken at the annual band banquet and at the Homecoming football game.





Team Members: Joe McCrary, Judy Dawson, Lewis Page, John Green, George Parks, Hank Frazier, Susan Durham, Jim Brewer

SFS Debating Team



Mr. Campbell talks over a debate topic with Hank Frazier, George Parks, Susan Durham, and Jim Brewer.



Team Sponsor Mr. Condon Campbell



Debaters Lewis Page, John Green, Judy Dawson and Joe McCrary confer with Mr. Campbell





Features



Senior Who's Who

PRETTIEST AND MOST HANDSOME

Peggy Lands - Hayden Collins



FRIENDLIEST

Bunnie Bradford - Myron Gardner



MOST LIKELY TO SUCCEED

Mary Helen Necklaus - Wayne Murrah

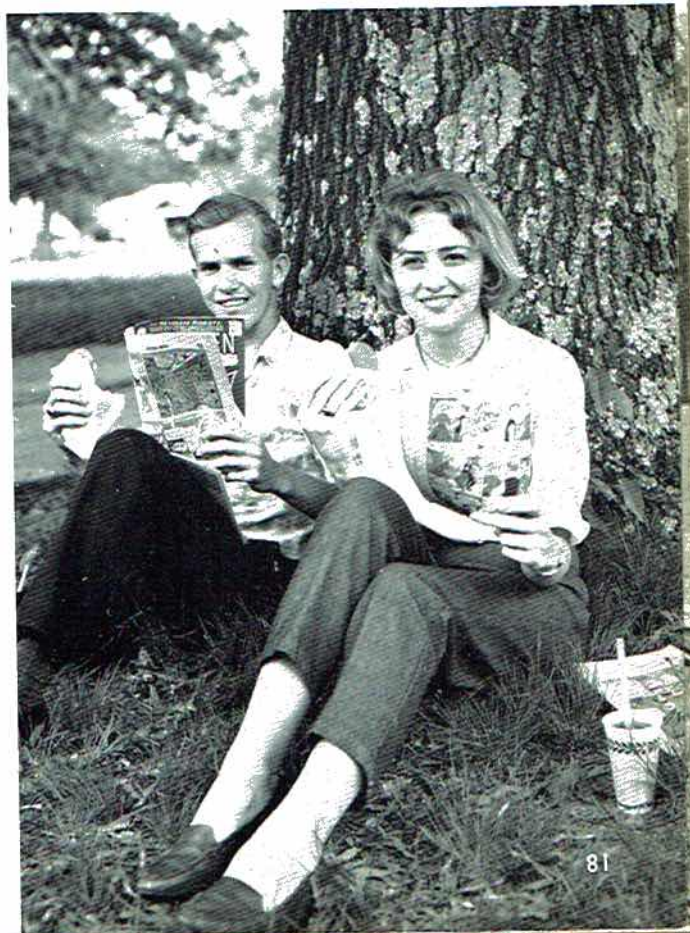


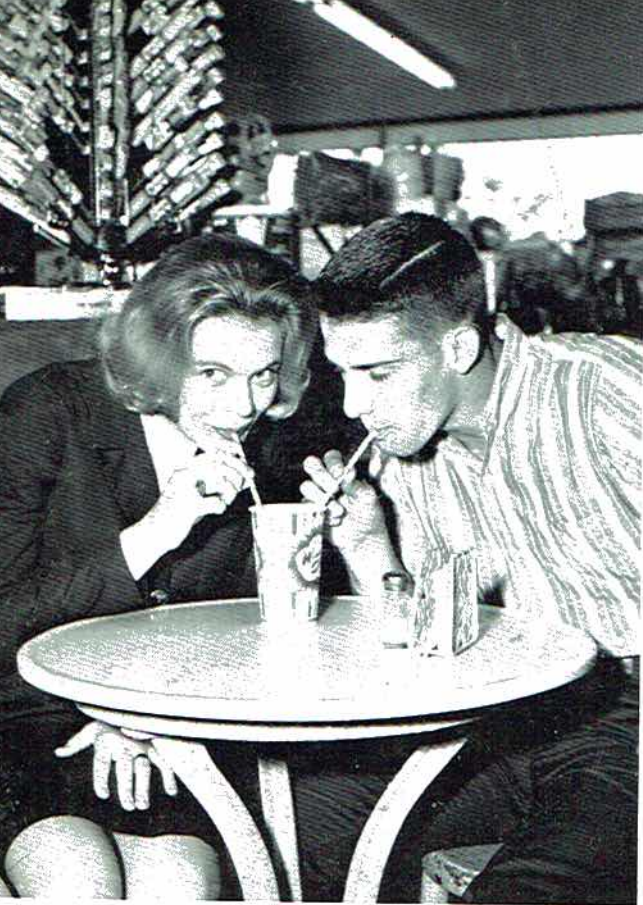
WITTIEST
Pam Mitchell - Tommy Derrick

MOST COOPERATIVE
Angela Cash - Wade Gentle



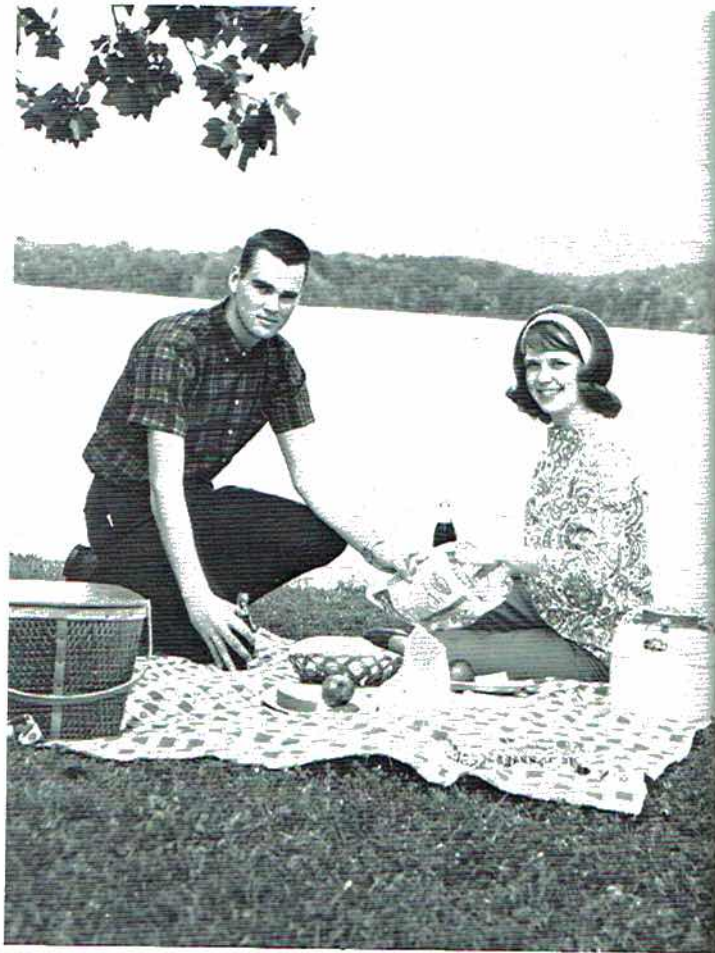
MOST STUDIOUS
Mary Sue Landsford - Charles Wilson





MOST POPULAR
Rebecca Ryan - Tommy McNeill

BEST-ALL-AROUND
Linda Wallace - Howard Ivey



MOST COURTEOUS
Martha Jane Bramblett - Sam Holland

BEST DRESSED
Kris Poole - Eddie Cunningham



MOST TALENTED
Lucy Campbell - Ronald Brandon



MOST ATHLETIC
Janie Arnold - Hershell Evans





PEGGY LANDS

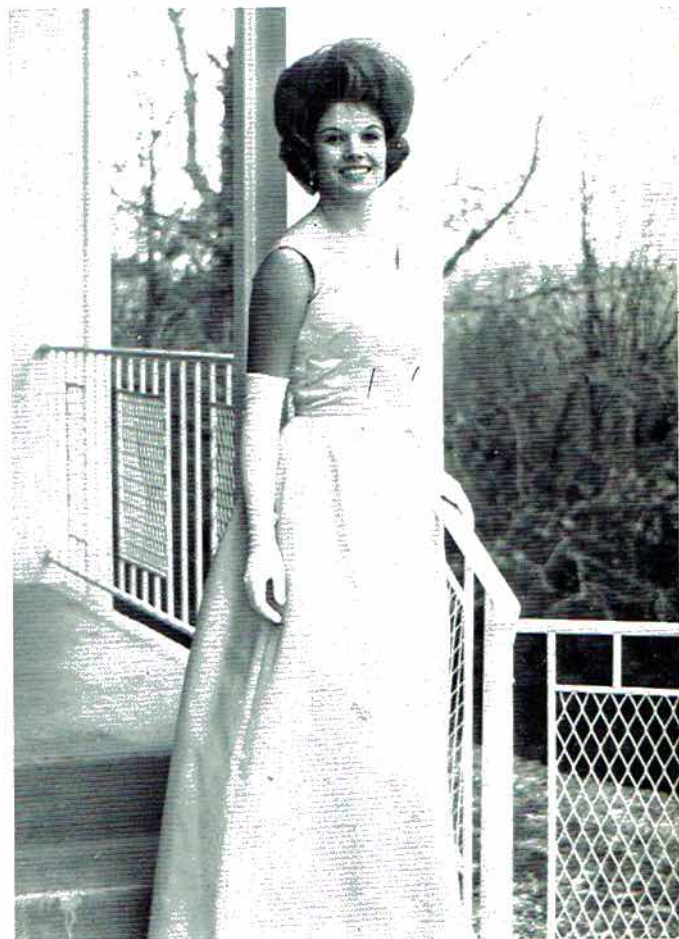
Homecoming Queen

Homecoming Attendants

LINDA CHAPMAN



PAT HARTSELLE



RITA RUDDER



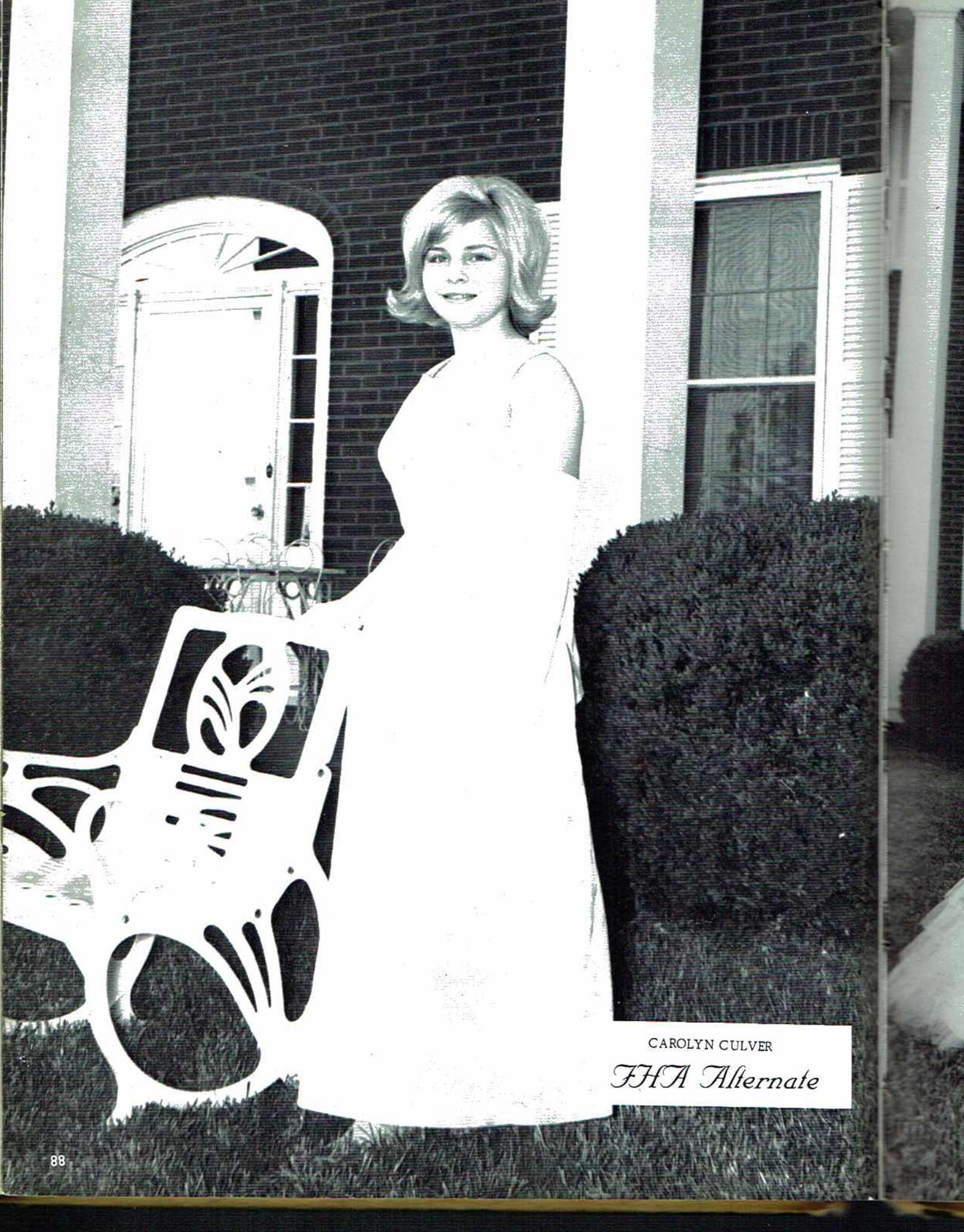


JEANIE MUSE
Miss SFS



Miss SFS Runners-Up

LEFT TO RIGHT: Sue Neyman - Fourth Place, Carol Latham - First Place, Norma Jean White - Third Place, Lucy Campbell - Second Place, Miss Congeniality



CAROLYN CULVER

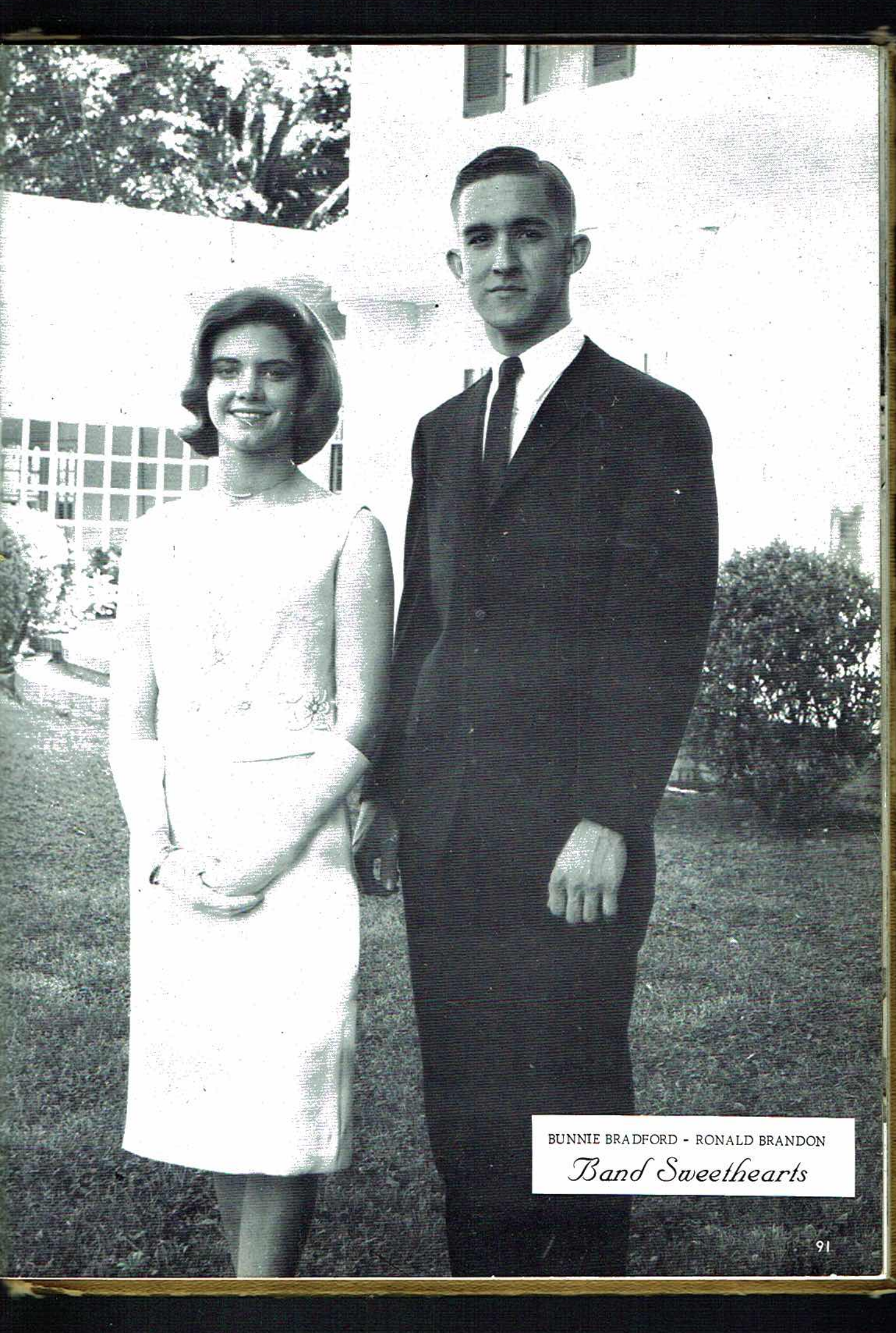
FHA Alternate



MARLENE GAMBLE
FHA Alternate



SHIRLEY O'LINGER - JAKE WALLINGSFORD
FHA-FFA Sweethearts



BUNNIE BRADFORD - RONALD BRANDON

Band Sweethearts



BETTY HALL - TERRY EAKIN
Mr. and Miss D.O.



LINDA WALLACE - JODY GAMBLE
Prom King and Queen

Class Favorites

SOPHOMORES

Nancy Lynch - Robert Hester



SENIORS

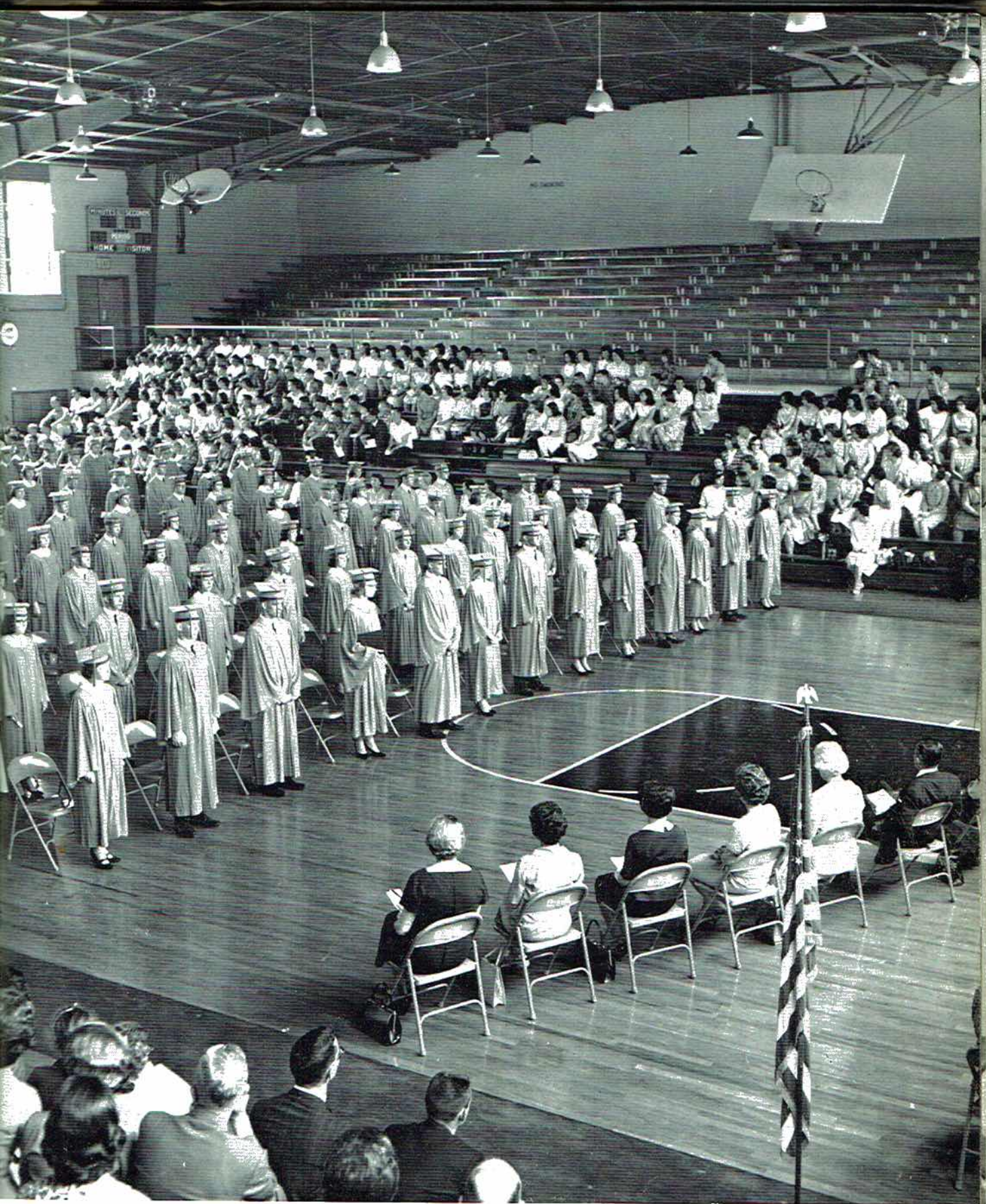
Bunnie Bradford - Hayden Collins



JUNIORS

Rita Rudder - Clyde Butler





Awards



ALL STAR MARCHING BAND MEMBERS
 Bill Parks, Kenny Lewis, Kris Poole, Ronald Brandon



GOOD C
 Mary



AMERICAN HISTORY AWARD
 Wanda Kennamer



D. O. AWARD
 Terry Eakin



NATIONA
 Joh



MUSIC CAMP SCHOLARSHIP
 Carol Keller



SPANISH AWARD
 Larry White



GIRL
 R



GOOD CITIZENSHIP GIRL
Mary Sue Lansford



HOME ECONOMICS STATE DEGREE - Mary Ann Matthews, Carolyn Mckee, Rosa Reid, Judy Gwathney, Pam Mitchell, Martha Bramblett, Shirley O'linger, Sue Neyman, Lucy Campbell, Martha Finney.



NATIONAL MERIT SCHOLARSHIP
Johnny Mac Green

BETTY CROCKER HOMEMAKER
OF TOMORROW

Lucy Campbell



GIRL'S STATE
Rosa Reid



Larry Ward



BOY'S STATE

Lewis Page



Robert Bonner



FOOTBALL AWARDS GIVEN AT BANQUET: Wayne Murrah, Jake Wallingsford, Micky Boles, Joe Barnes, Jimmy Gilliam, Hayden Collins, Jody Gamble, Hershall Evans, Terry Brandon, Walter Hass, Couch Meadows.



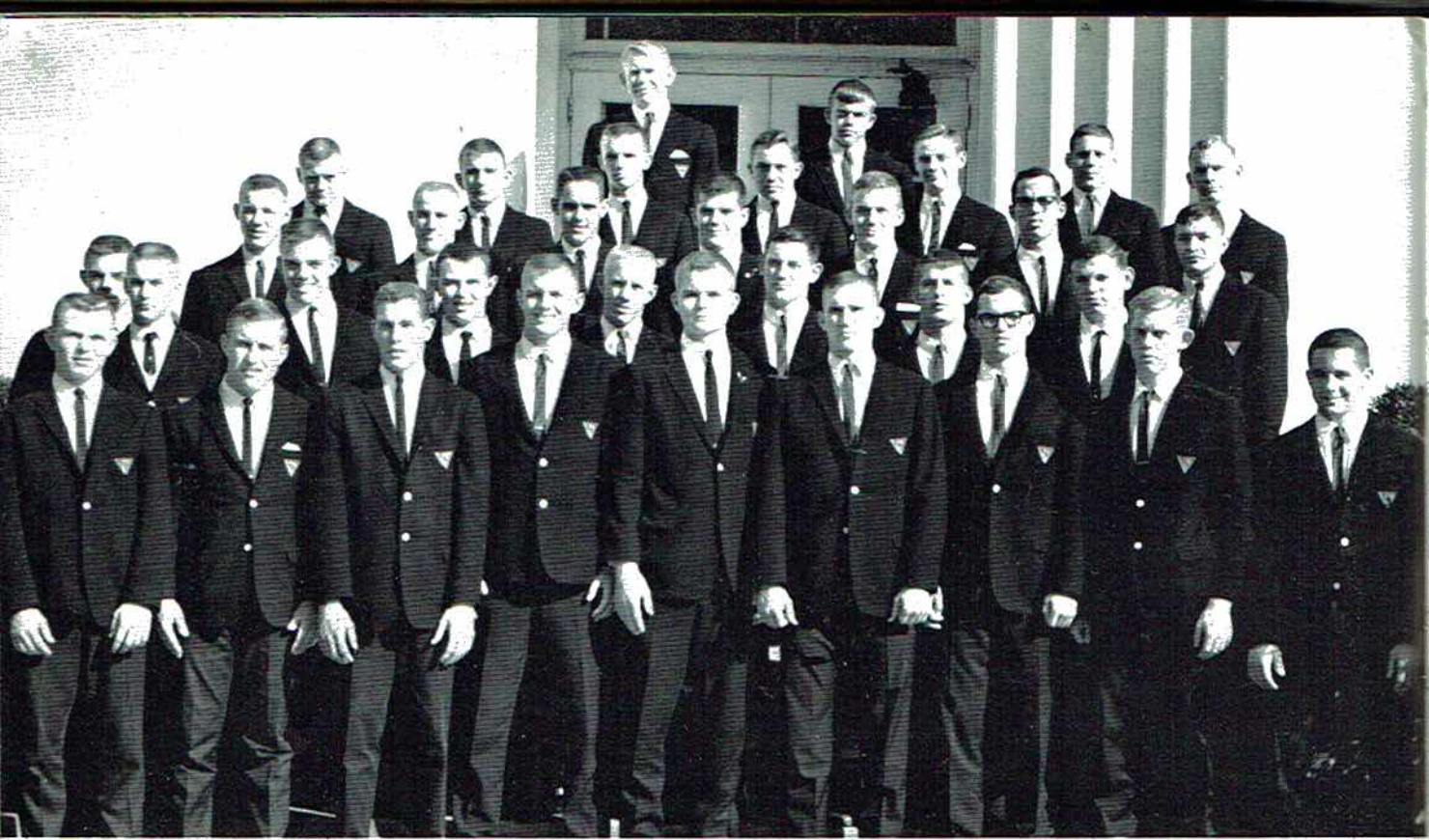
ALL COUNTY, DISTRICT, STATE and ALL-AMERICAN: BASKETBALL TEAM: L to R Charles Elliott, Hershall Evans, David Hurt, and Donald Webb.



ALL-STATE BAND MEMBERS: L. to R. Ronald Brandon, Johnny Green, Kris Poole and Martha Jane Bramblett.



Sports

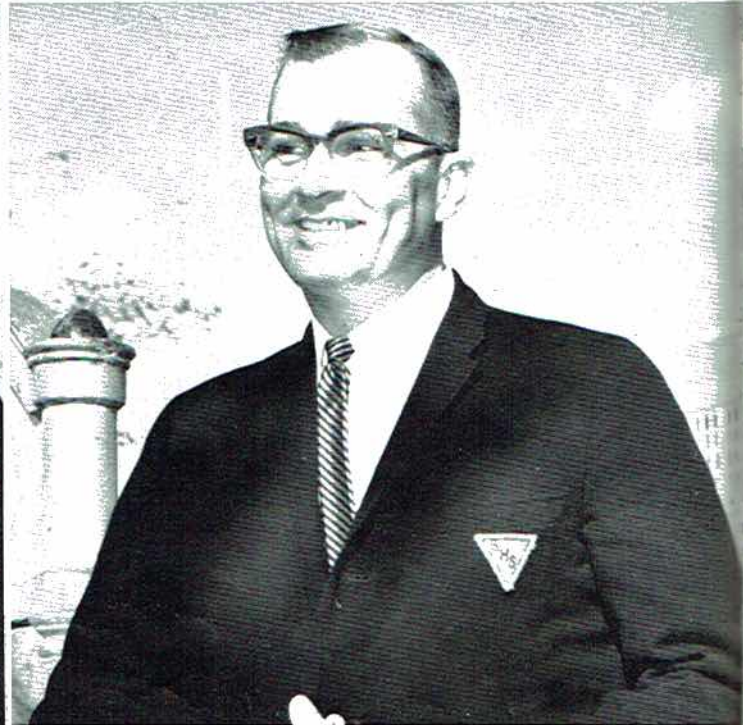


1965 Wildcat Football Team

*Scottsboro High Wildcats
of 1964-1965*



Coach John Meadows, Head Coach



Coach Lawrence Robinson, Assistant Coach



MICKEY BOLES
Center



HERSHELL EVANS
Quarterback



WADE GENTLE
Tackle



JOE BARNES
Guard



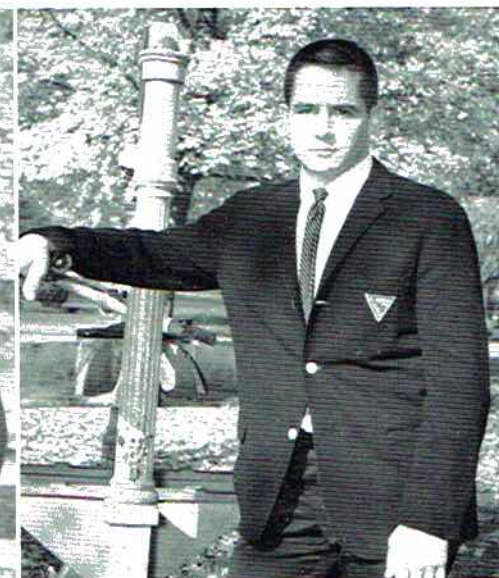
JODY GAMBLE
End



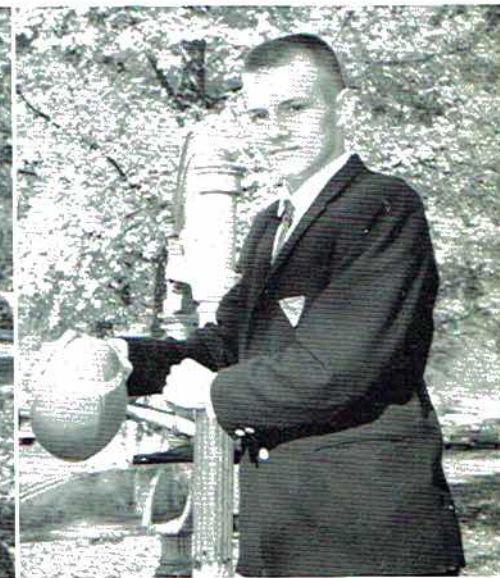
JAKE WALLINGSFORD
Fullback



TOMMY MCNEILL
Back



WALTER HAAS
Back



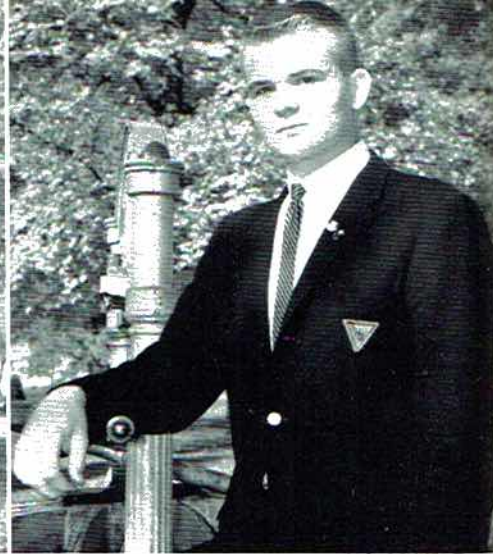
HAYDEN COLLINS
Tackle



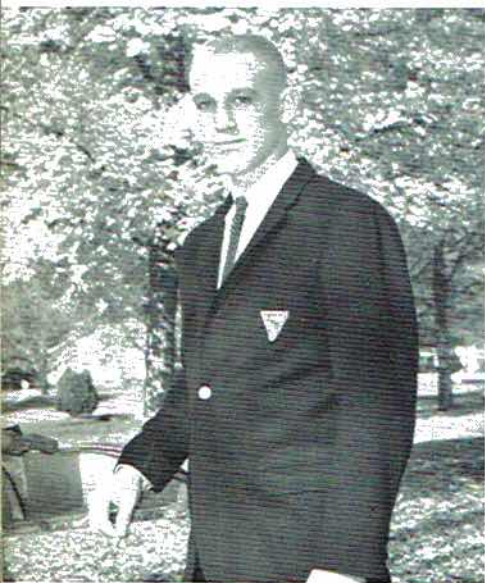
TERRY BRANDON
End



JIMMY GILLIAM
Tackle



WAYNE MURRAH
Guard



CHARLES DERRICK
Back



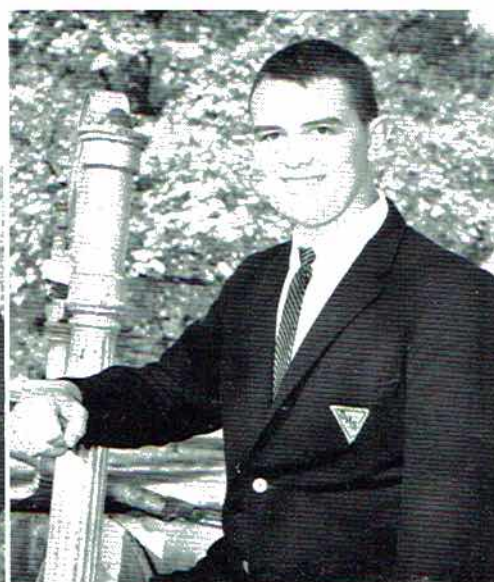
WAYNE WOODEN
Back



CLAY PEACOCK
Guard



ROBERT BONNER
Center



DAVID ANDERSON
Guard



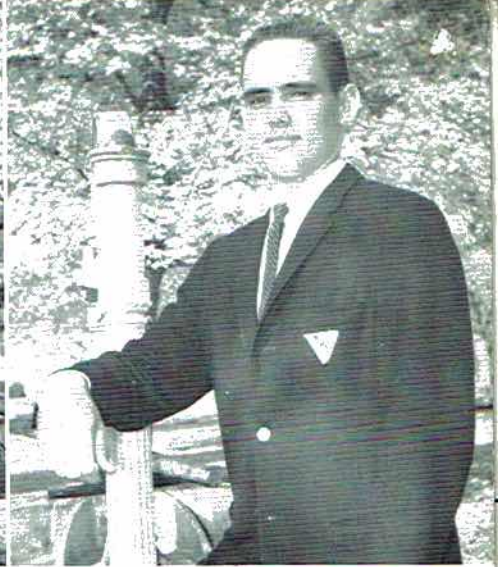
CHARLES ADAMS
Quarterback



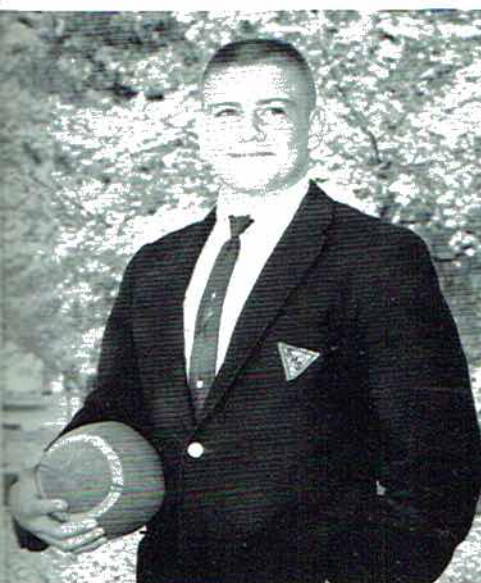
JACK CORNELIUS
Tackle



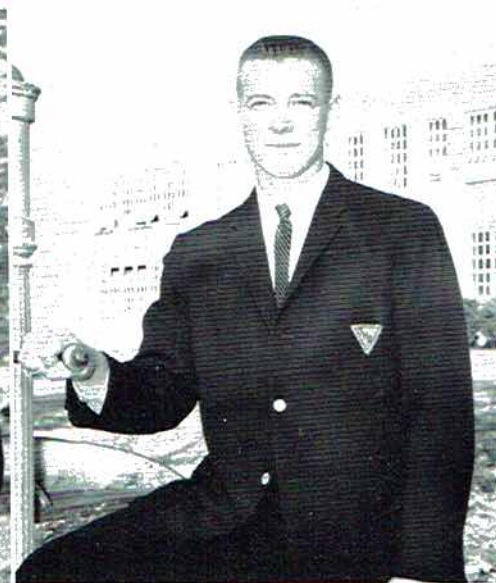
RONNIE ATCHLEY
End



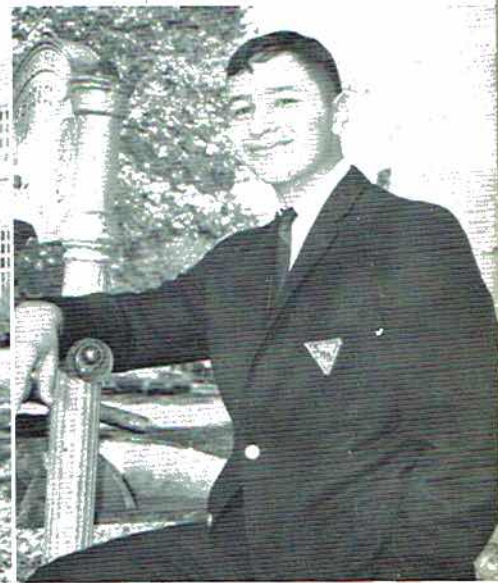
ROBERT HESTER
Quarterback



LARRY SMART
Back



BILLY RAY WEBB
Tackle



JOHNNY ADAMS
Guard



DONALD WEBB
Back



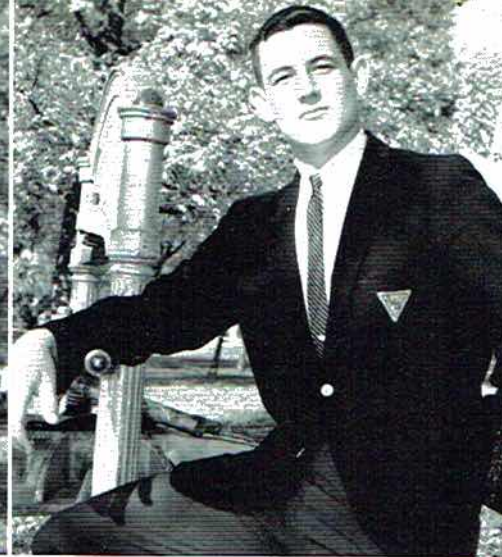
GLENN WILLIAMS
Guard



RAY BASS
Back



JERRY JUDGE
Guard



MICKEY STEWART
Guard



RUSSEL ATCHLEY
End



MIKE WILLIAMSON
Back



TERRY EAKIN
Guard



CLYDE BUTLER
Back

1964 Football Schedule

SCOTTSBORO	21	BRIDGEPORT	13
SCOTTSBORO	14	CHILDERSBURG	6
SCOTTSBORO	7	HALEYVILLE	19
SCOTTSBORO	27	ARAB	27
SCOTTSBORO	6	FT. PAYNE	7
SCOTTSBORO	14	GUNTERSVILLE	13
SCOTTSBORO	21	PELL CITY	6
SCOTTSBORO	19	ONEONTA	0
SCOTTSBORO	18	ALBERTVILLE	12



YOU REALLY KNOW HOW TO HURT A GUY!



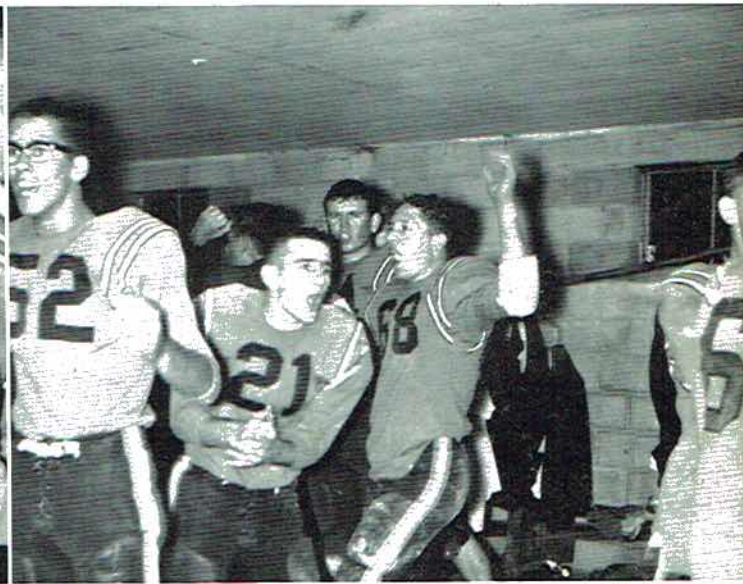
I TOLD YOU HE COULD DO IT!



AND WHEN I PRESS THIS BUTTON . . .



WHOA, I SAW HER FIRST!



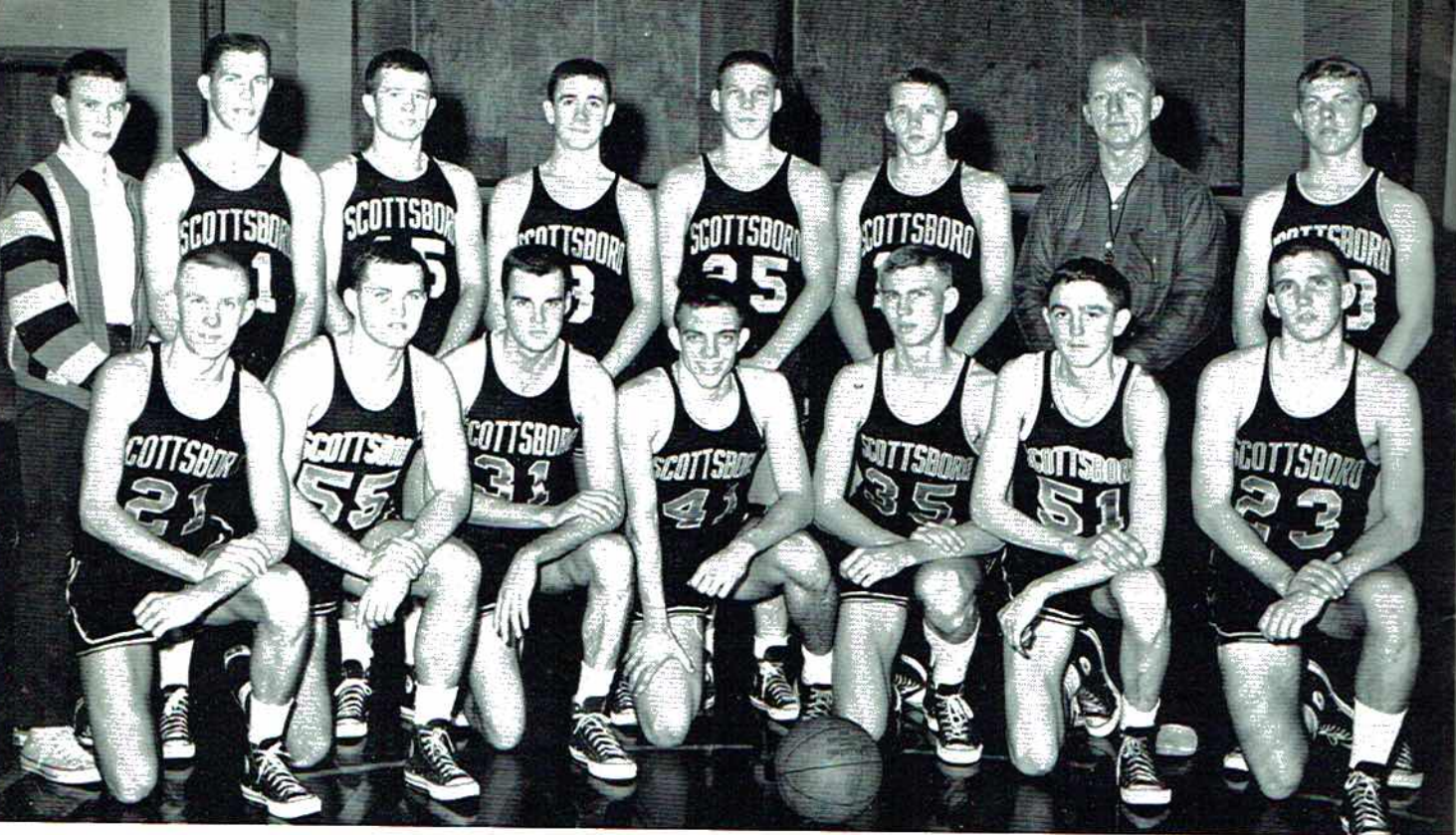
WHO DID YOU SAY SHE WAS?



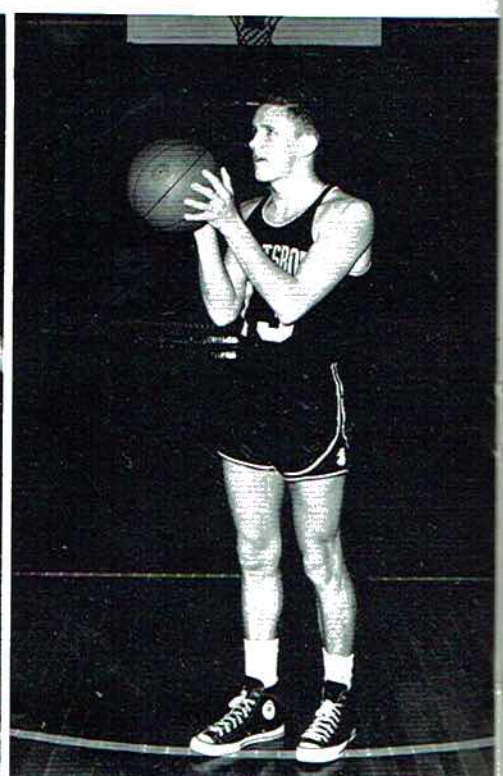
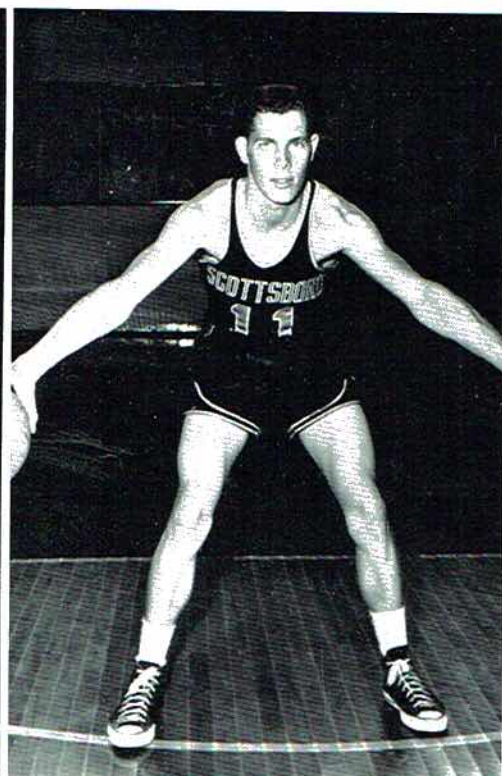
THEN HE HIT ME AND I . . .



YA SEE, IT HAPPENED THIS WAY . . .



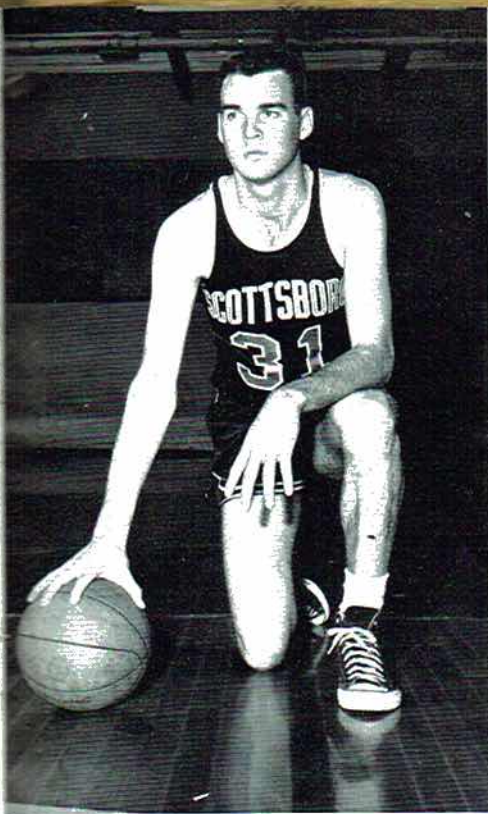
*Scotties 1964-65
Basketball "A" Team*



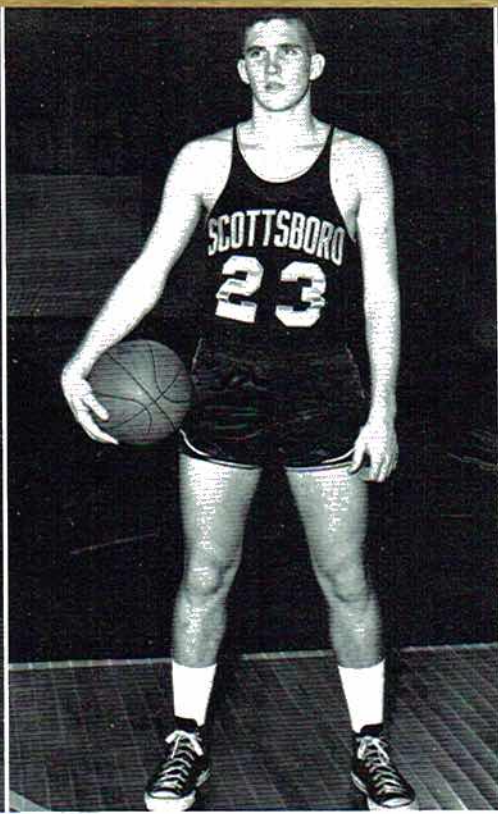
DAVID HURT

HERSHELL EVANS

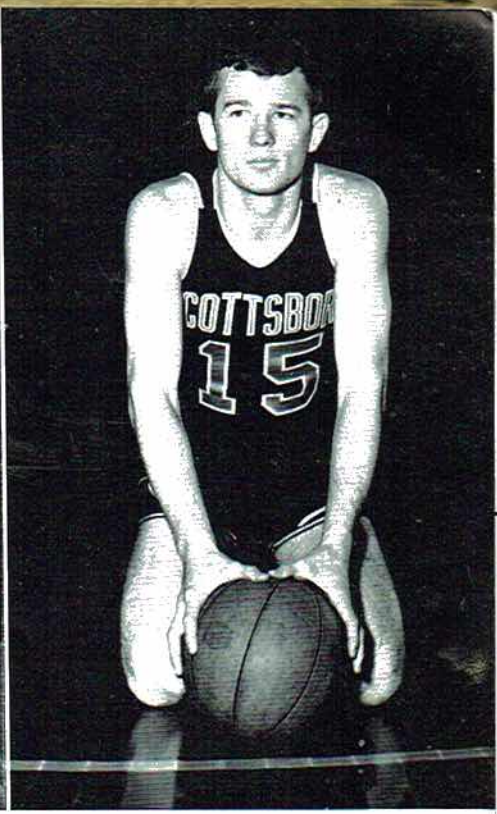
CHARLES ELLIOTT



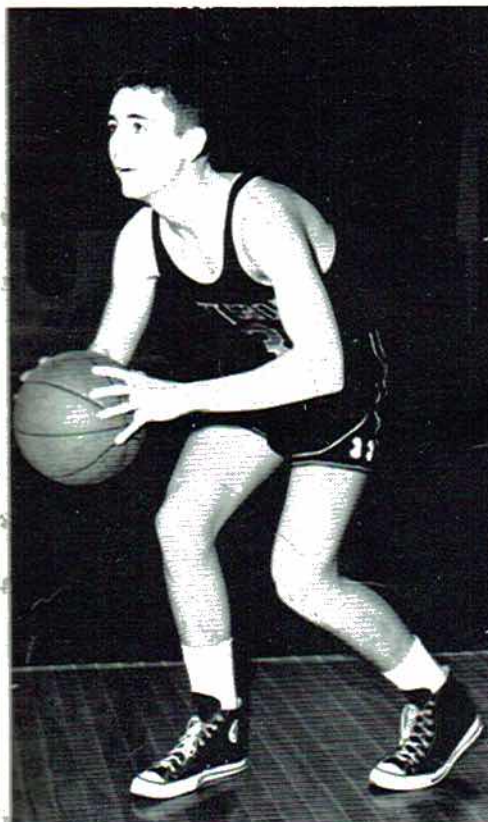
HOWARD IVEY



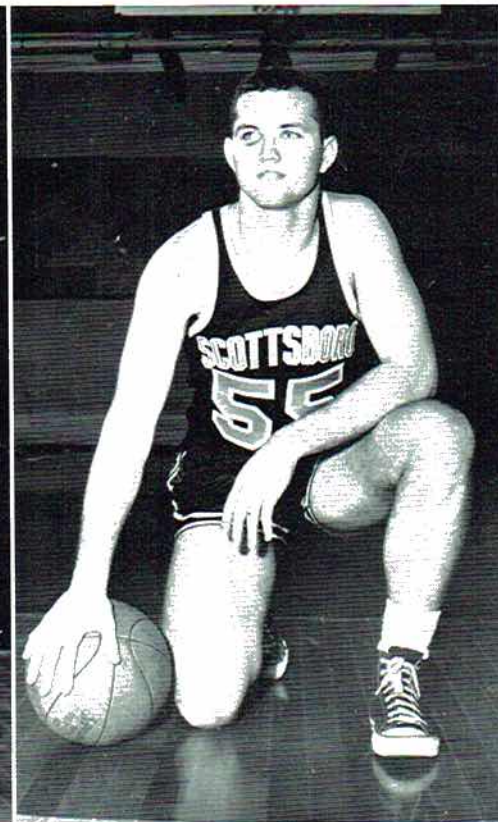
TERRY BRANDON



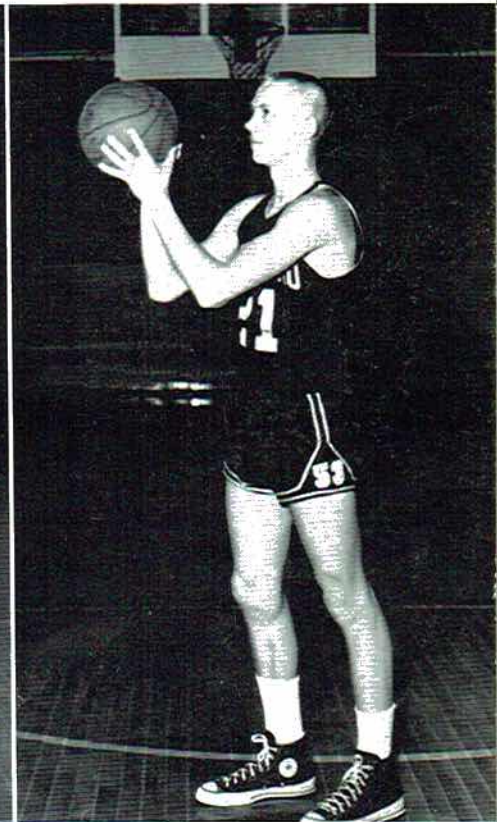
BRAD SHELTON



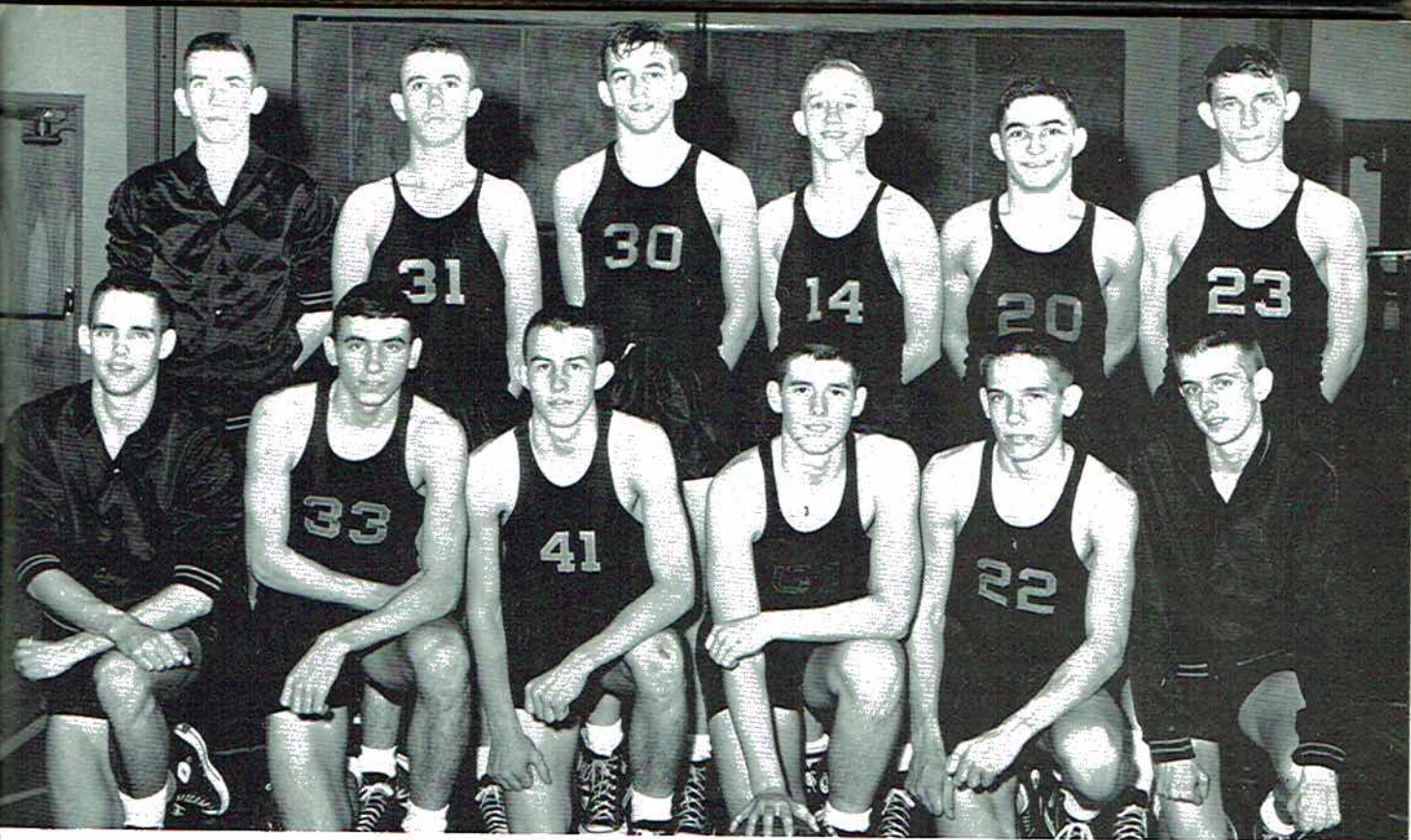
JOHNNY GENTLE



JODY GAMBLE



DONALD WEBB



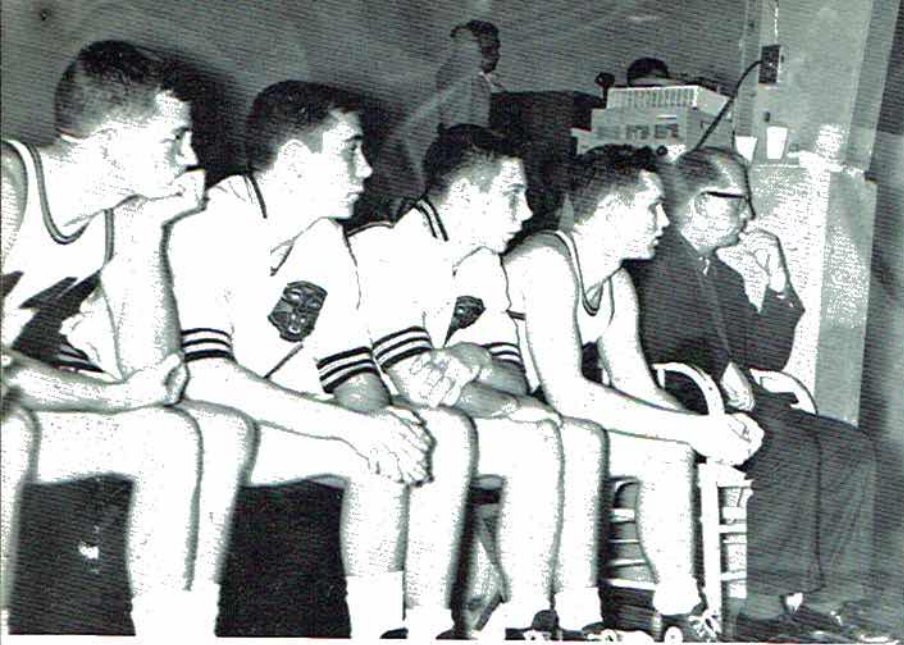
*Scotties 1964-65
Basketball "B" Team*

"B" Team Schedule

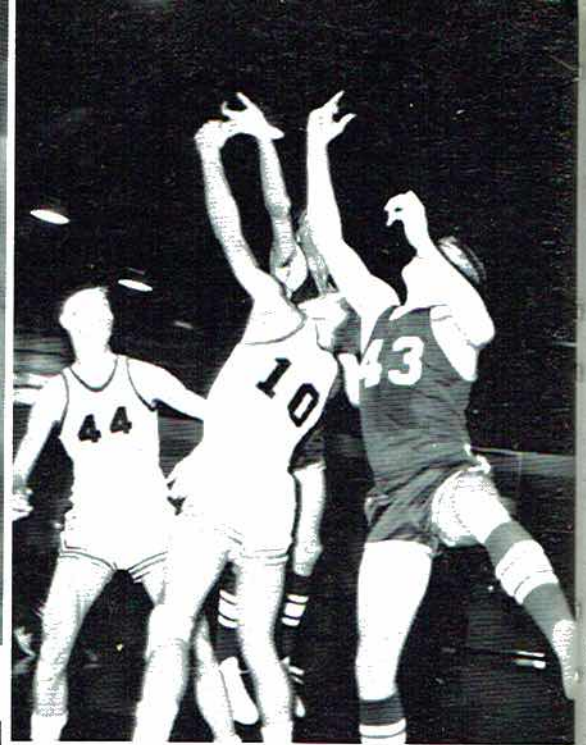
SCOTTSBORO	46	SYLVANIA	27
SCOTTSBORO	57	HUNTSVILLE	59
SCOTTSBORO	62	D. A. R.	51
SCOTTSBORO	94	SPARKMAN	90
SCOTTSBORO	41	FT. PAYNE	37
SCOTTSBORO	63	ARAB	65
SCOTTSBORO	66	WOODVILLE	50
SCOTTSBORO	95	GUNTERSVILLE	54
SCOTTSBORO	60	D. A. R.	66
SCOTTSBORO	79	SECTION	73
SCOTTSBORO	83	SYLVANIA	54
SCOTTSBORO	47	HUNTSVILLE	67
SCOTTSBORO	82	SPARKMAN	69
SCOTTSBORO	63	FT. PAYNE	46
SCOTTSBORO	61	ARAB	57
SCOTTSBORO	65	WOODVILLE	63
SCOTTSBORO	63	SECTION	67
SCOTTSBORO	70	PISGAH	85
SCOTTSBORO	54	SECTION	51
SCOTTSBORO	64	PISGAH	65
SCOTTSBORO	81	WOODVILLE	61
SCOTTSBORO	68	GUNTERSVILLE	82



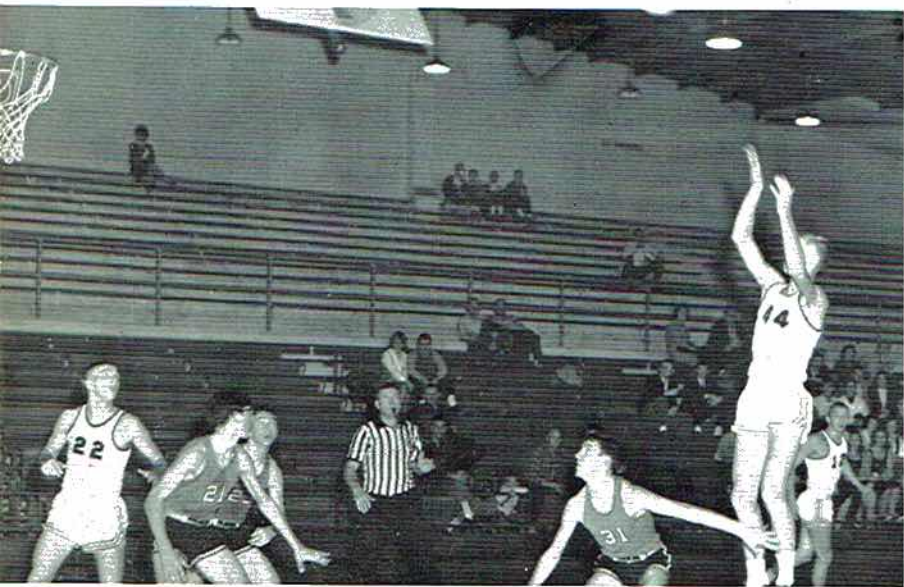
COACH Q. K. CARTER



Meditation



Okay, all together now.



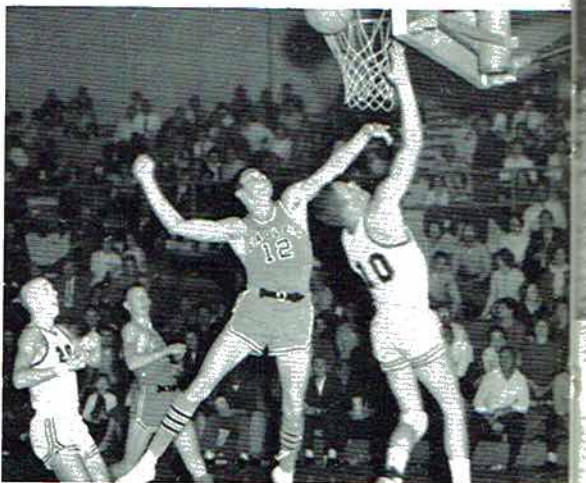
If I miss this, Coach says I'm through.



I know I can hit this one.



What do you mean this is the wrong goal?



Let's watch that elbow!



Advertisements

Established 1892

Phone 574-3858

Scottsboro, Alabama

HODGES DRUG STORE AND H & H PHARMACY



DEPENDABLE
DRUGGIST

Phone 574-3535

Scottsboro

Alabama

FRECK'S CHICKEN HOUSE

For GOOD FOOD



Ft. Payne Hwy.
Phone 574-2868
Scottsboro, Alabama

FEDERAL LAND BANK OF FORT PAYNE AND SCOTTSBORO



O. M. JOHNSON, Manager

CALL
574-2139
702 E. Laurel
Scottsboro, Ala.

CALL
845-2711
306 Gault Ave. S.
Ft. Payne, Ala.

HIWASSEE LAND COMPANY

"Growing and Buying Pulpwood for Bowater Paper Corporation"

Phone 574-2560

Scottsboro

Alabama

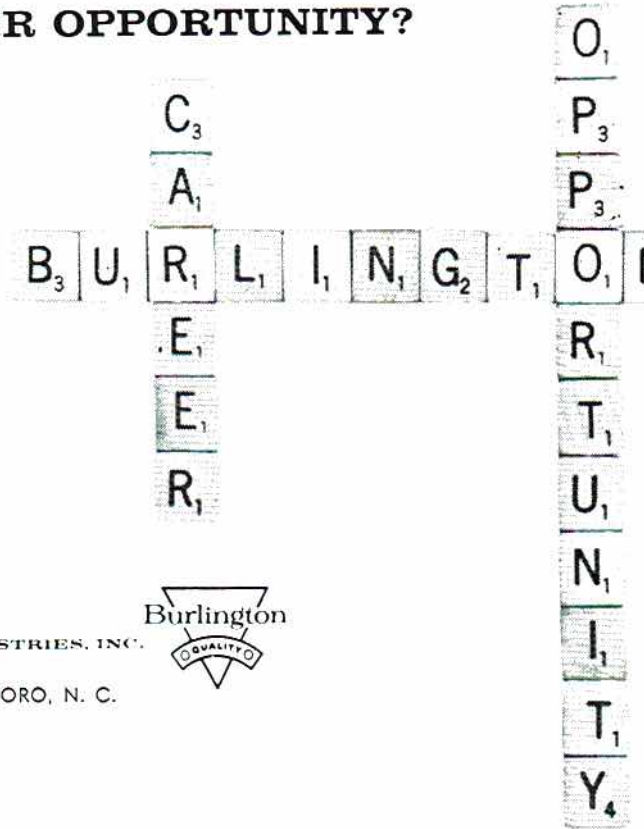
HOW DO YOU SPELL CAREER OPPORTUNITY?

In textiles, it's spelled B-U-R-L-I-N-G-T-O-N, where career opportunities are as varied and diversified as the endless array of quality Burlington products. For information on a challenging, rewarding career in textiles, write to the Personnel Director at:

Scottsboro Hosiery Company,
a unit of
Burlington Industries

Burlington INDUSTRIES, INC.

EXECUTIVE OFFICES: GREENSBORO, N. C.



OF
SBORO



GULF DISTRIBUTOR



Scottsboro, Alabama

MYRON GARDNER

BARGAIN TOWN U.S.A., INC.

"Clothing for the Entire Family"

Scottsboro, Alabama

Open Until 9: PM * Hwy. 72 at 5 Points

**VARIETY
BAKE SHOP**



Phone 574-2424

"Home Baked Flavor"

Scottsboro

- - - 2 Convenient Locations - - -

LET US HELP



Your Money

PATRICK LUMBER CO.



Phone 574-2211

Scottsboro, Alabama

SHOOK LAUNDRY & CLEANERS

P
h
o
n
e

Quality cleaning



5
7
4
-
2
2
8
8

Scottsboro, Alabama



HUSTLER PRINTING COMPANY, INC.

Woodfin Building
South Pittsburgh, Tennessee
Telephone 615 837-7382

W. H. PAYNE DRUG



Phone 574-2140
Scottsboro, Alabama

DODGE



BOYD MOTORS

DODGE CARS AND TRUCKS

--Parts and Service--

L. L. BOYD



Scottsboro

ROUGH & TUMBLE FURNITURE COMPANY

"The Little Man's Friend"

Scottsboro, Alabama

ERS

SCOTTSBORO

WHOLESALE

COMPANY

2
2
8
8

GS



**Fast
SERVICE**

Scottsboro, Alabama



WORD MOTOR COMPANY

McCAMY DRUGS

Laurel Street

Scottsboro, Alabama

"Your complete one stop sewing supply center"

**KENNAMER'S
MILL ENDS STORE**

Phone 574-3157

Scottsboro, Alabama

PARKS'

"When only the best will do"

MR. AND MRS. ALBERT PARKS

Scottsboro, Alabama

Phone 574-1162

BROWN & BERGMAN FURNITURE CO.

--Frigidaire Appliances--

112 South Broad Street

Scottsboro, Alabama



B & G GAS COMPANY

Distributors of Propane Gas and

Equipment

Telephone 574-1030 Scottsboro

SCOTTSBORO HARDWARE

Paints - Sporting Goods

Housewares - Plumbing

DALTON GENTRY, Owner

LAY'S

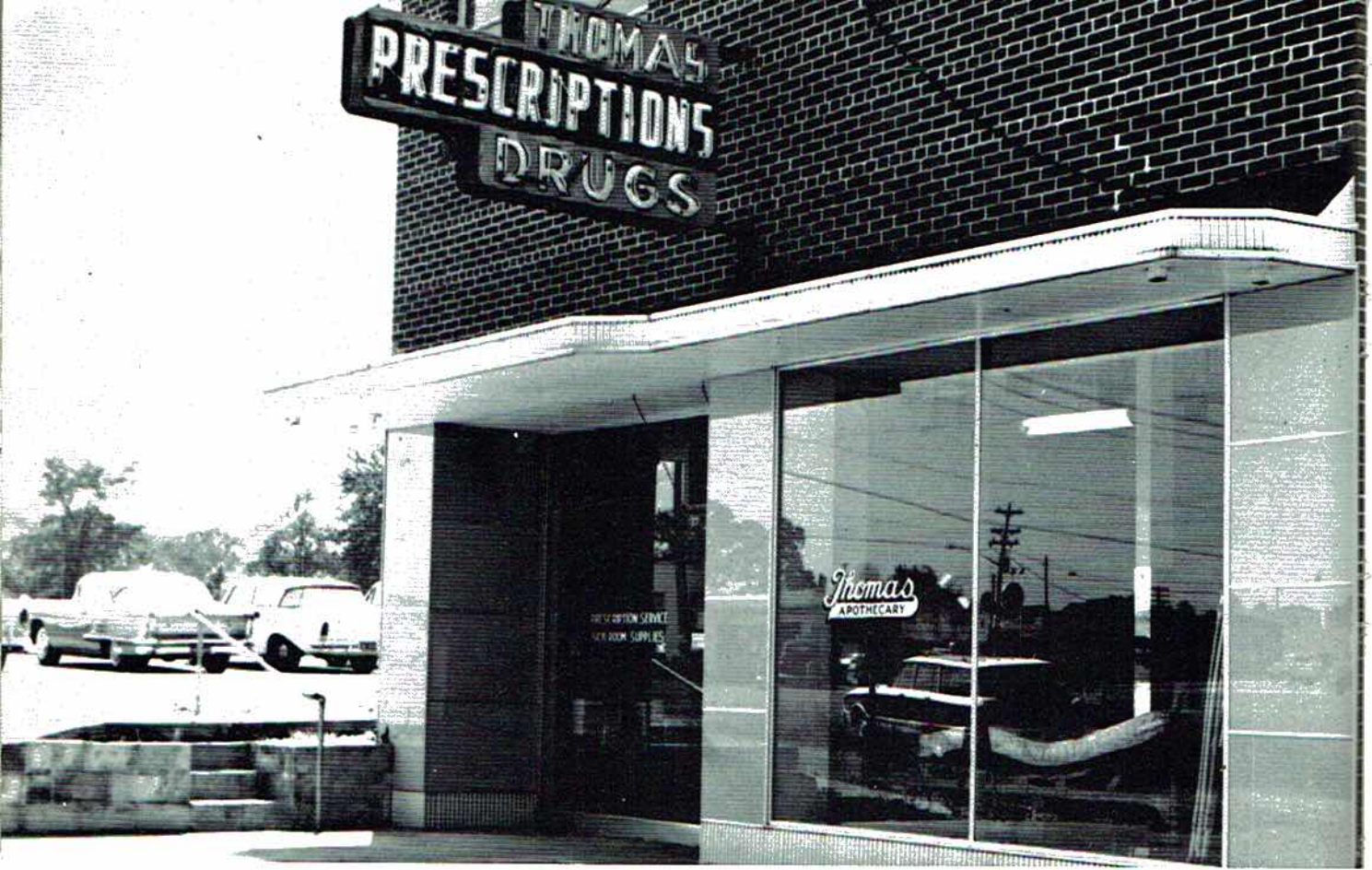
"Shop and save at Lay's"

111 East Laurel

Scottsboro, Alabama



DERRICK AUTO PARTS



THOMAS DRUG

STATE NATIONAL BANK



"Neighbor to All North Alabamians"



HARBIN MOTOR COMPANY

Scottsboro, Alabama

Phone 574-1210



"Jackson County Milk for Jackson County People"

MEADOW GOLD DAIRIES





STAR ENGRAVING CO.

Houston, Tex.

Manufacturing Jewelers and Stationers
rings . pins . medals . awards . di-
plomas . certificates . yearbooks.
announcements . band uniforms . caps
and gowns . public relations items

RALPH M. NALL Consultant

HAMILTON BAND INSTRUMENT CO.

35 West 13th Street

Anniston, Alabama

BURKETT



Telephone 539-1961

304 Governors Drive, S. W.

Huntsville, Alabama

BETTER GROCERIES



at

A. J. LINDSEY

Fort Payne, Alabama



Birmingham
2017 5th Avenue North

Athletic
Equipment
That
Scores

Huntsville
404 Governors Drive

GADSDEN
510 Broad St.

GENE



Scottsboro, Alabama

Phone 574-2261 P.O. Box 413

514 W. Willow Street

RAMBLER



SAM HODGES MOTORS, INC.



BUICK

307 W. Peachtree Street
574-1000



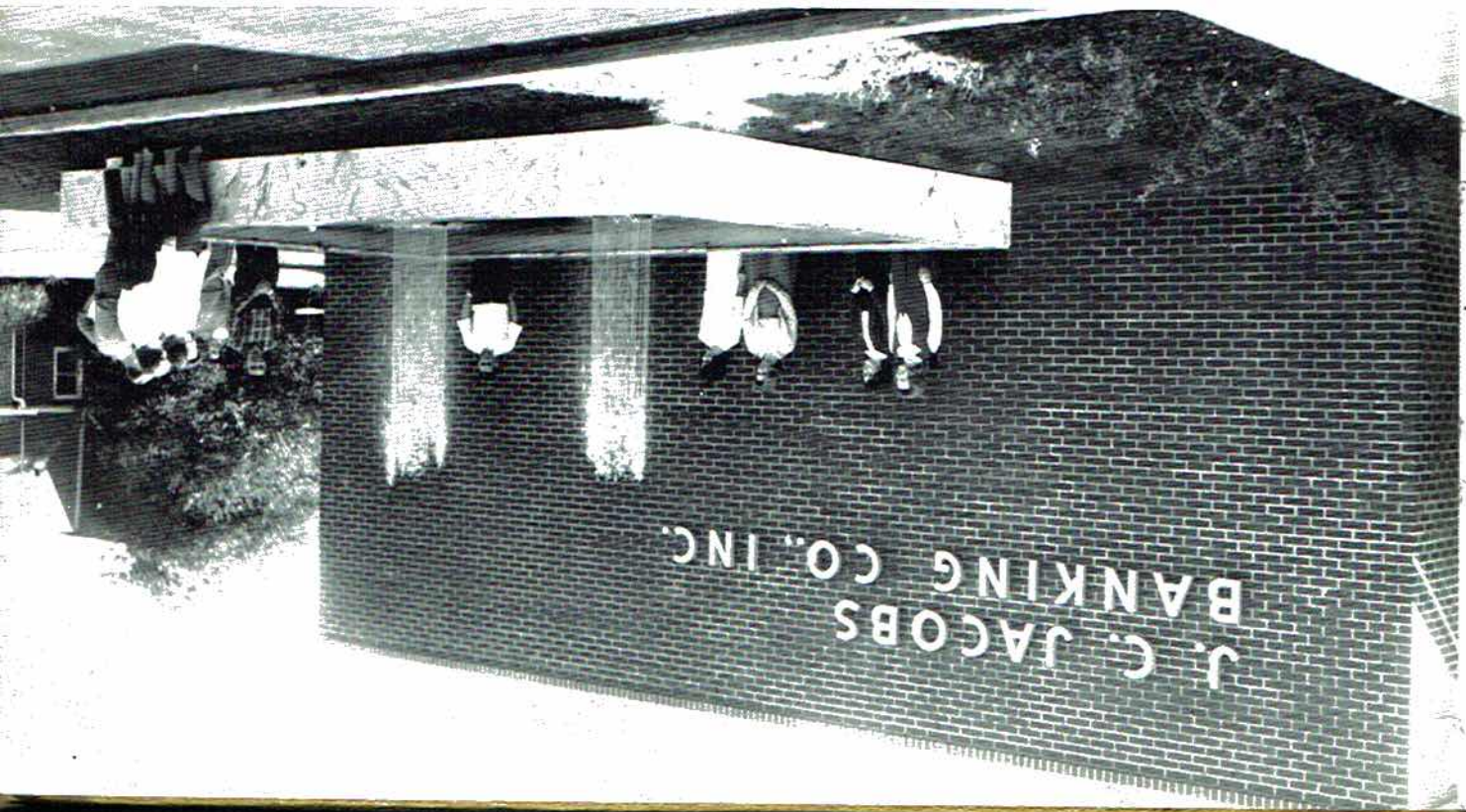
GENERAL TELEPHONE COMPANY OF ALABAMA

Scottsboro, Alabama
Olinger & Allen Motor Co. - 574-3781
Scottsboro Radiator Shop - 574-3594
Olinger & Allen Mobile Homes -
574-3781
Scottsboro Salvage & Glass Shop -
574-3594

OLINGER & ALLEN

J. C. JACOBS BANKING COMPANY

"Scottsboro's Most MODERN Banking Facility"



SCOTTSBORO RETAIL MERCHANTS ASSOCIATION

Scottsboro, Alabama

State Farm Insurance Company	Sam Hodges Motors
Darwin's	W. J. Word Lumber Company
J. C. Jacobs Banking Company	Ratliff's Store
Western Auto	Elmore's 5 & 10
Katie's Liberty Motel Restaurant	Sterchi Furniture
Grubtown U. S. A	WCRI Radio
Scottsboro Jewelers	Scottsboro Hardware
Hembree Insurance Agency	Adams Store
Jones Dry Goods Company	Rough & Tumble Furniture Company
Brown & Bergman Furniture Company	Lay's 5 & 10
Red Hot Store	Woodall's Ready-to-Wear
Printing Mart	State National Bank
Scottsboro Shoe Store	Ladies' & Children's Shoppe
H & H Pharmacy	A & P Food Store
W. H. Payne Drug Company	Jim Pitt's Flowers
Wales Jewelry	Piggly Wiggly
Thomas Apothecary	Top Dollar Store
First National Bank	Kenwin's

Phone 574-2941 Scottsboro, Alabama

China

Watches - Diamonds - Silver - Crystal

WALES JEWELRY CO.

Scottsboro, Alabama

801 East Laurel Street

DAVIS DRIVE-IN CLEANERS



Models Are:
Susan Durham
and
Bunnie Bradford

LADIES' & CHILDREN SHOPPE

any

"We Sell the Earth"

Phone 574-2717

111 Broad Street Scottsboro, Alabama

R. B. DERRICK REAL ESTATE COMPANY

J. H. BOOZER, Mgr.

Scottsboro, Alabama

Phone 574-2542

J. D. CHANDLER CYCLE CO.

STATE FARM INSURANCE



WELTON H. NORWOOD, Agent
Auto -:- Life -:- Fire and Casualty
Ask About State Farm's
Car Finance Plan



P. O. Box 145

Scottsboro

Office: 574-3149 -:- Phones -:- Home: 574-1976

HAMMER'S

Full of Surprises

and

"Always Something New"

"We appreciate your letting us
make your Senior portraits"

GIST STUDIO

Phone 574-3659 Scottsboro, Alabama

Wherever
you're
going...

When you
need a little lift—
depend on Coke

DRINK
Coca-Cola
REG. U.S. PAT. OFF.

wherever
you've
been

DRINK
Coca-Cola

BOTTLED UNDER AUTHORITY OF THE COCA-COLA COMPANY

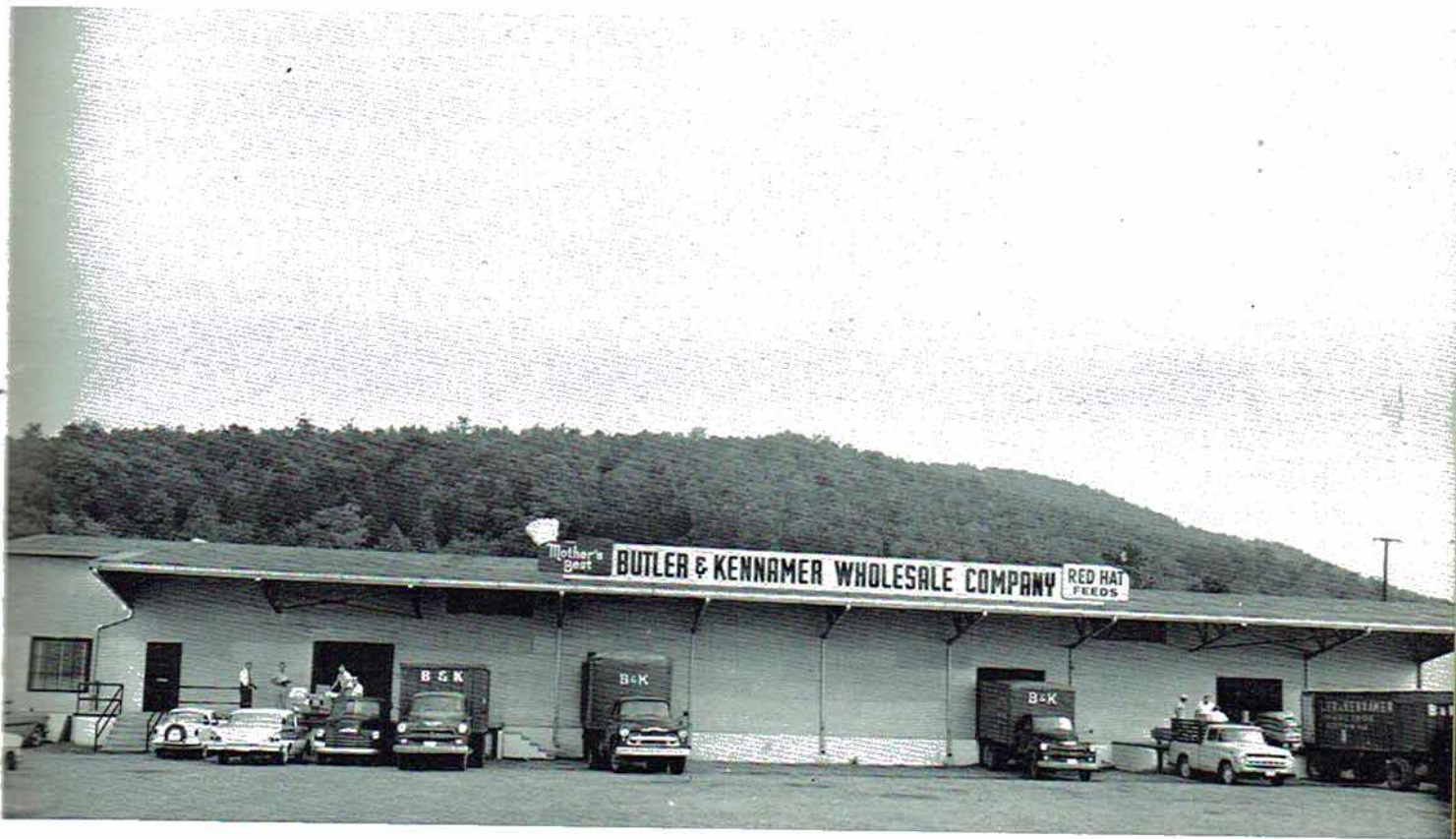
CONTINENTAL TRAILWAYS



Bus System

"Coast to Coast Bus Service"

BUTLER AND KENNAMER WHOLESALE CO.



Phone 574-3690

Scottsboro, Alabama

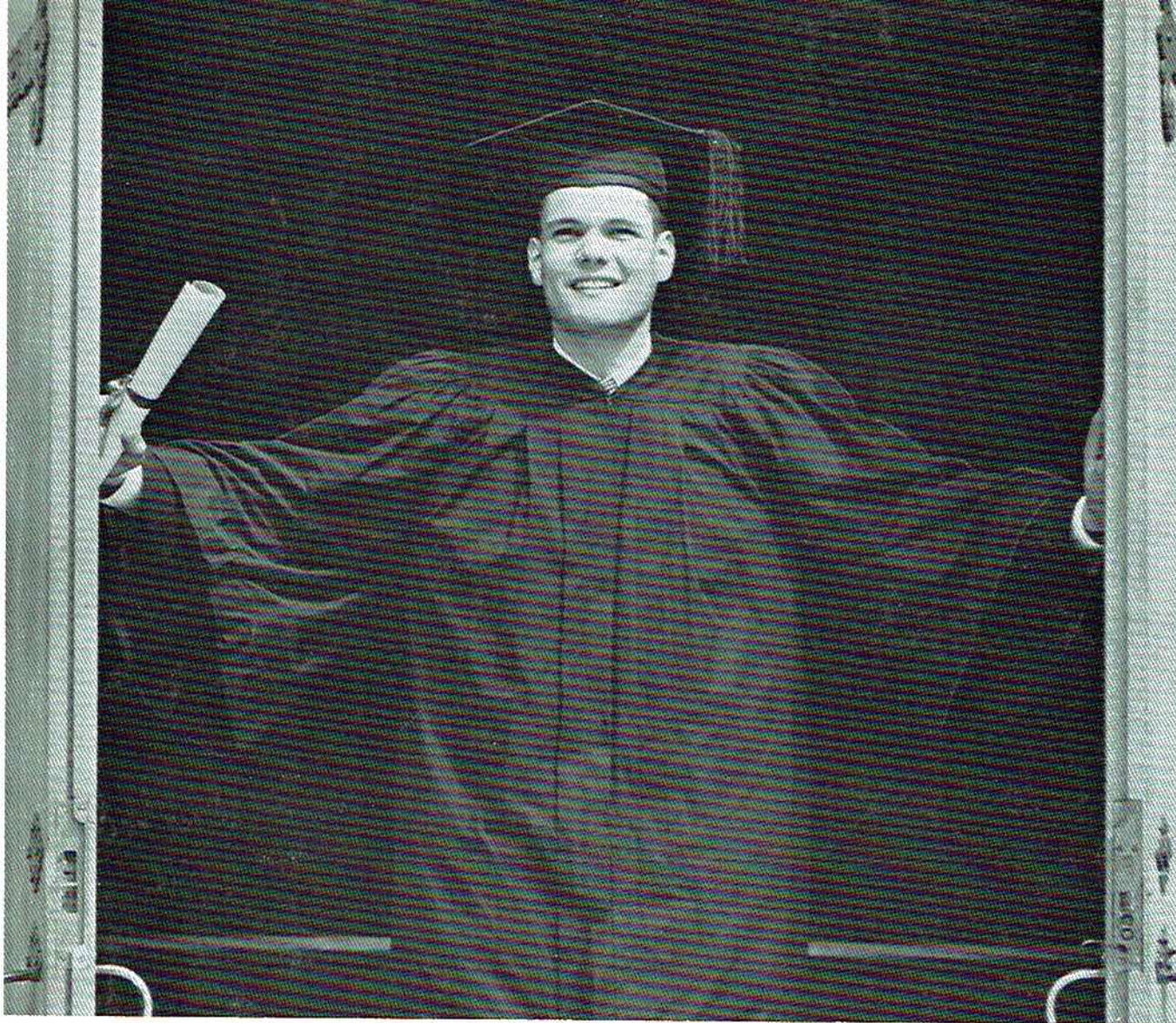
RATLIFF'S THE QUALITY STORE

"Where Your Business Is Appreciated."

Laurel Street

Scottsboro, Alabama

Phone 574-1179



CONGRATULATIONS, "STAYPUT"!

No "dropout" you! You wanted a future that offered opportunity. So you stuck with it. And you worked hard. Now you hold in your hand the passport to that future.

Just ahead lies life's biggest decision--your choice of a career. Choose wisely. Enter the business with opportunities unlimited--the textile industry.

Ever expanding, ever progressing, our industry constantly seeks intelligent, resourceful, imaginative young people who welcome the challenge of progress.

Learn more about the opportunities offered you by the textile industry. Contact the Personnel Director at the J. P. Stevens plant near you.

V. J. ELMORES STORES INC.

Scottsboro, Alabama

Shop More - Save More
at ELMORES

WOODALL'S

Ready-to-Wear
Junior Sportswear - Our Specialty

N. Side of Square
Scottsboro, Alabama

CRAWFORD CLEANERS

105 E. Appletree Street

Phone 574-3212

HEMBREE INSURANCE AGENCY



Phone 574-1279

Scottsboro, Alabama

BETTER GROCERIES



GRUBTOWN

"Where Shopping Is a Pleasure"

Fresh Fancy Produce

Money Saving Prices

Plain and Fancy Grub

Open 7:30 a.m. til Midnight, 6 days

DEAN GENTLE

HORACE J. WILKERSON

ELBERT BEARD



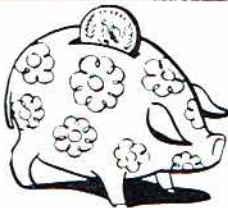
SCOTTSBORO AIR CONDITIONING AND SHEET METAL COMPANY

Refrigeration, Heating, and Electrical Contracting

Phone 574-4220

Scottsboro, Ala.

SAVE



JONES DRY GOODS

Scottsboro, Alabama

SCOTTSBORO BUSINESS MACHINES

Sales * Repair Service * Rentals

Scottsboro, Alabama

Phone 574-2288