

**THE REMINDER**  
**1962**

# THE REMINDER 1962

Published by the Journalism Class of Scottsboro High School,  
Scottsboro, Alabama, 1961-62.

WE, the editor-in-chief, and  
assistant editor, present this book  
with the help of our staff to aid you  
in remembering the past activities  
and events occurring during the  
school year 1961-62.

It has been ours for almost a  
year, now we present it to you.

Jack Holder  
Editor-in-chief  
Paulette Gentle  
Assistant Editor



DEDICATION

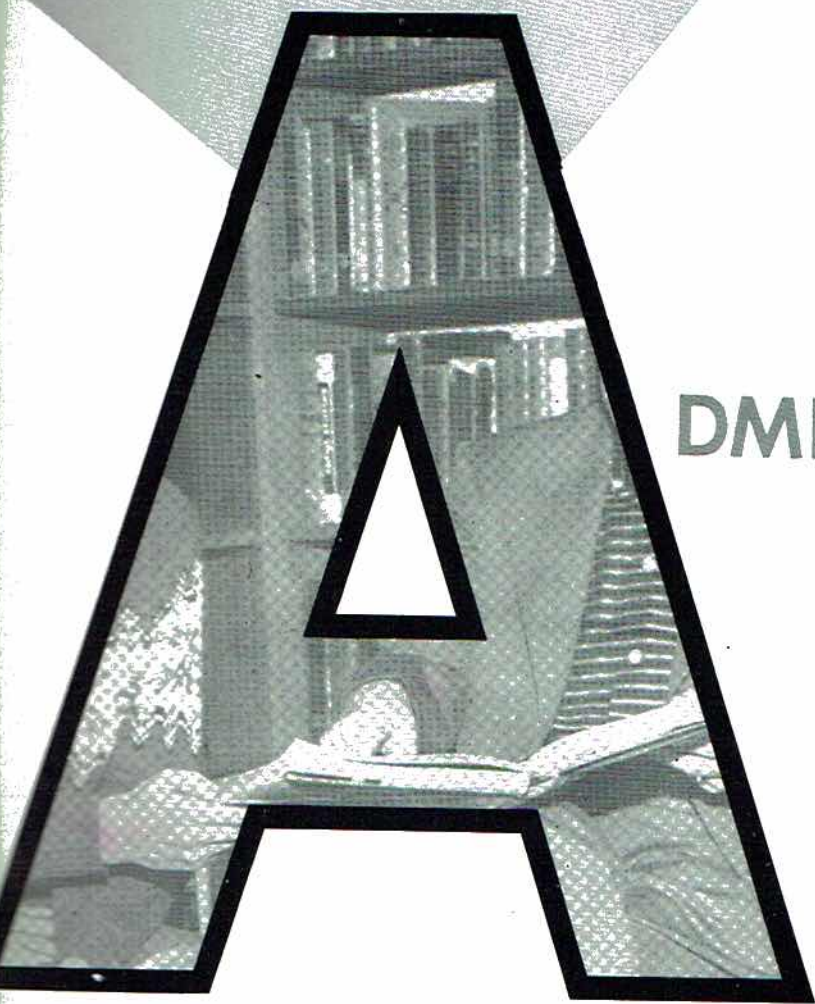
ADMINISTRATION

CLASSES

ACTIVITIES

SPORTS

ADVERTISEMENTS



**ADMINISTRATION**



DR. T. T. NELSON  
Superintendent Scottsboro  
Board of Education



MR. RAY COLLINS  
Principal of Scottsboro  
High School

## ADMINISTRATION

MRS. ROBERT R. BAGGETT  
Secretary of Scottsboro Schools



MRS. T. T. NELSON  
Secretary Scottsboro High





ENIORS



JAMES GORDON ADAMS  
 Student Council 1; Football  
 2, 3; "S" Club 2, 3; Sportsman  
 Club 1; Pep Club 1, 2, 3, 4.

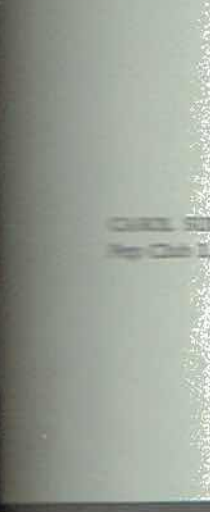
MARVIN WESLEY BARNETT  
 JR.  
 Baseball 1, 2; Football  
 Manager 1; Pep Club 1, 2, 3,  
 4; Sportsman Club 1; Basket-  
 ball 1; Senior Who's Who  
 -Wittiest.



MARY CAROLYN ALLEN  
 F. H. A. 2; Pep Club 3.



BARBARA JEAN BELL  
 Nurses Club 2; Pep Club 3, 4;  
 Library Club 3, 4; Wildcat Staff  
 4; Annual Staff 4; F. H. A. 2, 3.



ROBERT ROY BAGGETT JR.  
 Class Favorite 1; Pep Club 1,  
 2, 3, 4; Basketball 1, 2; Base-  
 ball 1, 2, 3, 4; Sportsman Club  
 2, 3, 4; Football 1, 2, 3, 4; All  
 Conference State, County 4;  
 Honorable Mention of All  
 American.



DANA LYNN BENNETT  
 Baseball 1, 2, 3, 4; Basketball  
 Manager 3, 4; Football 1; Pep  
 Club 1, 2, 3, 4; "S" Club 3, 4.



JERRY CLAYTON BARCLAY  
 Basketball 1, 2, 3, 4; Most  
 Valuable Player 4; Baseball  
 1, 2, 3, 4; D. O. Club-Mr. D.  
 O. 4; F. F. A. ; "S" Club 2, 3,  
 4.

LINDA JANE BLACKWELL  
 Cheerleader 1, 2, 3, 4, Head  
 3, 4; Homecoming Queen 4;  
 Pep Club 1, 2, 3, 4; F. T. A. 3,  
 4; F. H. A. 3, 4; Junior Class  
 Secretary; Annual and Wild-  
 cat Staff; Senior Who's Who  
 -Most Popular.





JOHN EDWARD BRADFORD  
Basketball 2, 3, 4; Pep Club 1,  
2, 3, 4; Football 1; "S" Club 4;  
Science Club 3, 4; Treasurer 4.

EUGENE EARNEST CAMPBELL



CAROL SUE BRYANT  
Pep Club 1, 2, 3.



JOAN KING CHANDLER  
F.H.A. 1, 2; Pep Club 1, 2.



DOUGLAS MACARTHUR  
BRYANT  
Football 2, 3, 4; F. F. A. 2;  
National Honor Society 2, 3, 4;  
Sportsmen Club 3, 4; F. T. A.  
4; Pep Club 4; "S" Club 3, 4;  
D. O. Club 4.



JERRY EDWARD CORNELISON  
F. F. A. 2, 3.



EDWARD RANDOLPH BRYSON  
Band 2, 3, 4; Pep Club 1, 2, 3, 4;  
Spanish Club 3; Sportsmen Club  
3; National Merit Finalist 4.

MARY DELL COWLEY  
F. H. A. 2; Pep Club 3.







SADIE BEA CROSS  
D. O. Club 3, 4; Medical  
Careers 4; Reporter 4; Pep  
Club 3, 4.



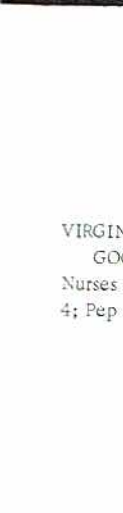
DENNIS WADE DEERMAN  
Basketball 2, 3, 4; Football  
2, 3, 4; "S" Club 3, 4, Presi-  
dent 4; F. F. A. 2; Sportsman.



CHARLES MELVIN  
CUNNINGHAM  
Basketball 1, 2, 3, 4; Baseball  
2, 3, 4; Office Worker 2;  
Science Club 4; "S" Club 4;  
Pep Club 2, 3, 4.



PRINCE ALVIN EDWARDS  
Pep Club 2, 3, 4; Football 1.



VIRGIN  
GO  
Nurses  
4; Pep



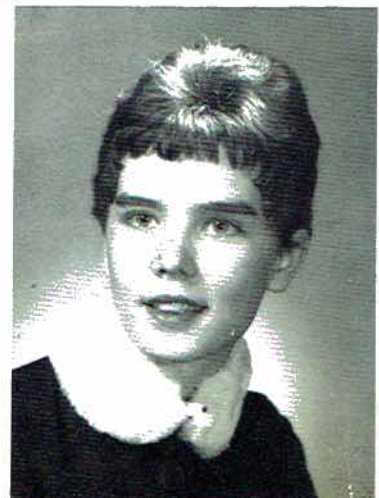
BLANCHE MARIE DAVIS  
Spanish Club 3; Pep Club 4.



BENNY GAY FARR



GEANETTA DAWSON  
Nurses Club 2; Band 2; F. T. A.  
4; F. H. A. 3; Spanish Club 3;  
National Honor Society 3, 4;  
Secretary 4; Pep Club 1, 2, 3,  
4, Treasurer 4; Senior Science  
Club 4; Senior Class Typist 4.



BRENDA SUE GARNER  
F. H. A. 2, 3; Wildcat Staff 3;  
Annual Staff 3.





JOYCE KAY GOLDSTON  
 Pep Club 1, 2, 3, 4; F. T. A. 4;  
 Annual Staff 3; Wildcat Staff  
 3; Senior Who's Who-Most  
 Courteous.



JIMMY CORDELL GREENE  
 Sportsman Club 1, 2, 3; Pep  
 Club 1, 2, 3; Football 1, 2;  
 F. F. A. 2.

VIRGINIA CAROL  
 GOOLESBY  
 Nurses Club 1, 2; Library Club  
 4; Pep Club 3, 4; F. H. A. 3, 4.



RAYFORD GILBERT GUFFEY  
 Student Council 3; F. F. A. 4.



BETTY FRAZIER GREEN  
 National Honor Society 3, 4;  
 F. H. A. 2; Pep Club 2, 3;  
 Medical Careers 2, 3; Student  
 Council 4.



VAL JEROME HAMLIN  
 Band 2, 3, 4; National Honor  
 Society 2, 4; All-State Band  
 4; Pep Club 2, 3, 4; Student  
 Council 1; Science Club.



JACQUELYN COLLIER GREEN  
 Pep Club 2, 3, 4; F. H. A. 2.

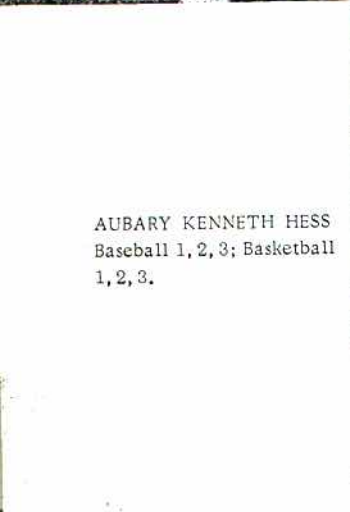
BRENDA JEAN HASTINGS  
 Student Council 2; Pep Club 2,  
 3, 4; Library Club 4.





LARRY PAUL HENDERSON  
Pep Club 2, 3, 4; F. F. A. 4.

DOUGLAS BENTON HODGES  
Student Council 1, 2, 3, 4,  
President 4; National Honor  
Society 2, 3, 4; Science Club  
4; Pep Club 1, 2, 3, 4; Wild-  
cat Staff 3; Annual Staff 3;  
Junior Class President 3;  
Who's Who-Most Studious;  
Who's Who in High Schools  
of America.



AUBARY KENNETH HESS  
Baseball 1, 2, 3; Basketball  
1, 2, 3.



JAMES DONALD HODGES  
Pep Club 1, 2, 3, 4, President  
4.



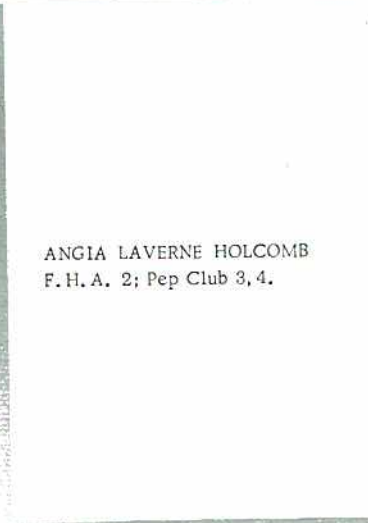
JUDITH  
Cheerlea  
Head Ch  
of the W  
3, 4, Pre  
2; F. T. A  
4; Band  
Student  
Club 3;  
Club 2, 3



JESSIE DELL HICKS  
Band 1, 2, 3, 4; Wildcat Staff  
3; Nurses' Club 2; Pep Club  
1, 2, 3, 4; F. H. A. 3; Spanish  
Club 3; F. T. A. 2, 3, 4,  
President 4; Student Council  
3; National Honor Society 2,  
3, 4, Reporter 4; Library Club  
4; Girls' State.



ANGIA LAVERNE HOLCOMB  
F. H. A. 2; Pep Club 3, 4.



RACHEL ANN  
HIGGINBOTHAM

JACK HOLDER  
"S" Club 3, 4; Football 2, 3;  
Sportsman Club 3, 4; Editor  
of the Annual 4; Wildcat  
Staff 4; Assistant Editor 4;  
Who's Who-Best All Around;  
F. F. A. 1, 2, 3; Pep Club 3, 4.





DAVID CARL HOWELL  
 Football 1, 2, 3, 4; Baseball 1,  
 2, 3, 4; Pep Club 1, 2, 3, 4;  
 Sportsman Club Vice-President  
 3, President 4; F. F. A. 2, 3, 4;  
 Secretary 4; "S" Club 2, 3, 4;  
 Senior Who's Who-Friendliest.

JUANITA FAYE JORDAN  
 D. O. Club 3, 4.



JUDITH ANN HUBBARD  
 Cheerleader 2, 3, 4; Alternate  
 Head Cheerleader 4; Editor  
 of the Wildcat 4; F. H. A. 2,  
 3, 4, President 4; Miss F. H. A.  
 2; F. T. A. 2, 3, 4, Treasurer  
 4; Band 1; Pep Club 1, 2, 3, 4;  
 Student Council 3; Spanish  
 Club 3; Reminder Staff 4; "S"  
 Club 2, 3, 4.



MARTHA LOUISE KEETON  
 Library Club 4.



THOMAS CLAUDE HURT  
 Sportsman Club; Senior Class  
 Favorite.



CHARLES RAY KIRKLAND  
 Pep Club 4; D. O. Club 3;  
 Football 1; F. F. A. 2; Sports-  
 man Club 3.



SHIRLEY FAYE JACOBS  
 Medical Careers Club 3, 4.

VIRGINIA ANN LACKEY  
 F. H. A. 2; Wildcat Staff 2;  
 Office 3; National Honor  
 Society 3, 4; Vice-President;  
 Pep Club 2, 3, 4; F. T. A. 4;  
 Student Council 4; Junior  
 Class Favorite 3; Who's Who  
 -Most Athletic.





JOSEPH ALLEN LEE  
 Student Council 2, 4; Secretary-  
 Treasurer 2, Vice-President 3;  
 Office 4; National Honor  
 Society 2, 3, 4, President 4;  
 Basketball 1-4; Wildcat 3;  
 Annual 3; Pep Club 2-4;  
 Science Club 3; History Medal  
 3; Boys State 3; Finalist  
 National Merit Scholarship  
 Contest 4; Vice-President  
 Junior Class 3; Citizenship  
 Conference 4; Winner District  
 Oratorical Contest 4; Who's  
 Who-American Colleges.

ALICE SUE MANNING  
 F. H. A. 2, 3; Library Club  
 President; National Honor  
 Society 4.



MARGARET FAYE LEWIS  
 D. O. Club 3, 4.

EUNICE PEARL MANNING  
 4H Club 1, President 1; Pep  
 Club 2, 3, 4; F. H. A. 2, 3;  
 Nurses Club 2; Library Club 1.



GARY LYNN MC GUFFEY  
 Football 2, 3, 4; Baseball 3;  
 "S" Club 3, 4; Secretary 4;  
 Pep Club 3.



JACKIE HAROLD MARTIN  
 F. F. A. 4; D. O. Club 4,  
 Reporter 4.



GEORGE WILLIAM MC KEE

BILLY WACO MATTHEWS  
 Basketball 1; Baseball 1, 2, 3,  
 4; Football 1; Football and  
 Basketball Manager 2; D. O.  
 Club 3, 4; Pep Club 3, 4;  
 F. F. A. 2.

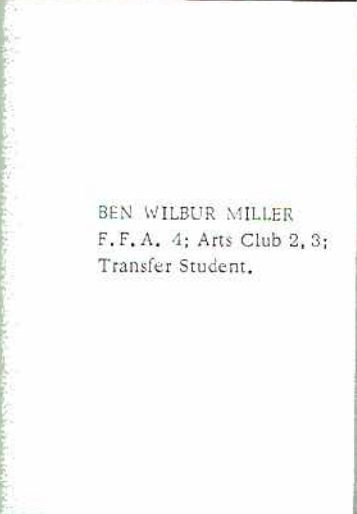




SHIRLEY PATRICIA  
MATTHEWS  
F. H. A. 2, 3; Medical  
Careers 2, 3, 4.



SHIRLEY ILENE MITCHELL  
F. H. A. 2.



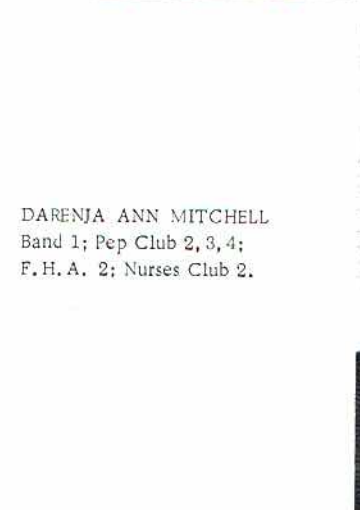
BEN WILBUR MILLER  
F. F. A. 4; Arts Club 2, 3;  
Transfer Student.



FRIEDA GAYLE MUSE  
Nurses Club 2, 3; Medical  
Careers Treasurer 4; D. O.  
Club, Reporter 3, Secretary  
4; Miss D. O. 4; National  
Honor Society 3, 4; F. H. A. 2.



ERMA DAVIS NEWELL  
Band 2; F. H. A. 2; Pep Club  
3. Typist of Senior Class.



DARENJA ANN MITCHELL  
Band 1; Pep Club 2, 3, 4;  
F. H. A. 2; Nurses Club 2.



SAUNDRA KAY MITCHELL  
Band 1; Pep Club 1, 4; Wild-  
cat 3; Annual 3.



JOHN DOUGLAS NORRIS  
Football 1, 4; Most Valuable  
Lineman 4; "S" Club 4; Sports-  
man Club 3, 4; Band 1; Science  
Club 2; Pep Club 3, 4; Transfer  
Student; Wildcat 4; Annual 4;  
Senior Play 4.





BARBARA ANN O'LINGER  
F. H. A. 2, 3, 4; Nurses Club  
4; D. O. Club 3.

MARY FRANCES PHILLIPS  
F. H. A. 2, 3, 4.



BILLY VAN O'LINGER  
Football 2, 3, 4; F. F. A. 2, 3,  
4; "S" Club 2, 3, 4.

VIRGINIA HANCOCK  
PHILLIPS  
Pep Club 1.



GLENDON HARRY OTT  
F. F. A. 2, 3, 4; D. O. Club 3,  
4.



CHARLES FRANKLIN  
POLAND  
Pep Club 1; Band 1, 2; F. F. A.  
3, 4; Wildcat Staff 3; Annual  
Staff 3; Senior Play 4.



BARBARA MIDDLETON  
PITTS  
F. H. A. 2; Pep Club 2, 3.

JAMES ROBERT PORTER  
Pep Club 1, 2, 3, 4; Sportsman  
Club 2, 3, 4; Senior Science  
Club 4; National Honor Society  
4; Senior Play.





SARAH RUTH PRESTWOOD  
4-H Club 3; Glee Club 3;  
F. H. A. 3; D. O. Club 3;  
Pep Club 4.



ROBERT REED JR.  
F. F. A. 3, 4, Vice-President  
4.



CANNA MAE PROCTOR  
F. H. A. 2; Pep Club 3;  
Library Club 3, Rep. 3.



TROY ELBERT REED  
Junior Basketball 1; F. F. A.  
3, 4; Pep Club 3, 4.



JANICE MARIE PROCTOR  
F. H. A. 2, 3; Band 1, 2; Pep  
Club 1, 2, 3, 4.



GLENDALOUSE ROBERTS  
Pep Club 1, 2, 3, 4; F. H. A. 2,  
3, 4; F. T. A. 3, 4; National  
Honor Society 3, 4; Student  
Council 4; Spanish Club 3,  
Vice-President 3; F. H. A.  
State Degree 3.



DELBERT ROY REED  
Basketball 1, 2, 3; F. F. A. 2;  
D. O. Club 3, 4, President 4;  
Pep Club 4.

PATRICIA ROBERTS  
Band 1, 2, 3, 4; F. T. A. 2; F.  
H. A. 1, 2; French Club 2;  
Press Club 2, 3; NSPA 2; Pep  
Club 4; Newspaper Staff 2, 3;  
Annual Staff 2; Transfer  
Student.





CAROL ANN RODEN  
 Band 1, 2, 3; Majorette 2, 3;  
 Pep Club 2, 3, 4; F. T. A. 2;  
 Class Favorite 1; Homecoming  
 Attendant 4; Senior Who's Who  
 -Best Looking.



PATRICIA JEANNINE  
 SHERWOOD  
 Library Homeroom Rep. 2;  
 Pep Club 1, 2, 3, 4; Who's Who  
 -Wittiest.



KENNETH MC CADOO  
 ROGERS  
 F. F. A. 2; Sportsman Club 2,  
 3, 4.



BOBBY MILTON SOUTHERARD  
 Sportsman Club 4; F. F. A. 2, 3.

THOM  
 Basket  
 1, 2, 3,  
 Preside  
 4; Pep  
 Boys' S



LILLIE JOYCE SANDERS  
 F. H. A. 2, 3.



ALVIN PORTER STEWART  
 Pep Club 1, 2, 3, 4.



NELLIE JO SELVAGE  
 F. H. A. 2, 3; Pep Club 3, 4;  
 Wildcat Staff 4.



HOWARD HILLARY STEWART  
 D. O. Club 3, 4; Sportsman  
 Club 3, 4; Pep Club 3, 4.





CHARLES LARRY TANNER

BETTY ANN WALKER  
F. H. A. 2, 3.



THOMAS WAYNE TREECE  
Basketball 1, 2, 3, 4; Football  
1, 2, 3, 4; F. F. A. 2, 3, 4,  
President 4; "S" Club 1, 2, 3,  
4; Pep Club 1, 2, 3, 4; Alternate  
Boys' State Rep. 3.

GEORGE THURMAN WALKER  
Band 1, 2, 3, 4.



SAMMY JACK THOMAS  
Pep Club 2, 3, 4.



VIVIENNE WEBB  
F. H. A. 2, 3, Song Leader 3;  
State Homemaker Degree 3;  
Pep Club 1, 2, 3, 4; Band 1, 2,  
3, 4; All State 1, 2, 3, 4; Wild-  
cat Staff 3; Student Council  
3; N. H. S. 2, 3, 4; President of  
Spanish Club 3; Junior Class  
Treasurer; Science Club 4;  
Oratorical Winner 4.



SAMUEL PARKS TUBBS  
Football 2, 3, 4; Basketball 1,  
2, 3; "S" Club 2, 3; Pep Club  
2, 3; Student Council 2.

THOMAS EARL WEEKS  
National Honor Society 2, 3, 4.





PEGGY JO WYNN  
 Student Council 2, 3; National  
 Honor Society 3, 4; Pep Club  
 2, 3; F. H. A. 2.



BILLY RAY SANDERS  
 F. F. A. 2, 3, 4.



RITA JOYCE WOMACK  
 Pep Club 2, 3, 4; Annual Staff  
 3; Wildcat Staff 3; Science  
 Club 4; Senior Play 4; Who's  
 Who-Friendliest 4.

## SENIOR CLASS OFFICERS

PRESIDENT . . . . .	NATHAN BLACK
VICE-PRESIDENT . . . . .	JOHN BREWER
SECRETARY . . . . .	CAROL SLOAN
TREASURER . . . . .	CECIL KEITH



JUDITH ANN MURPHY  
 F. H. A. 1, 2, 3, 4, Reporter 3,  
 Vice-President 4; Latin Club  
 1, 2; Dramatics Club 1; French  
 Club 3, 4; Student Council 4;  
 Secretarial Club 3, 4; Transfer  
 Student.



CHARLES EDWARD  
 YARBROUGH

# CLASS PROPHECY

Scottsboro, Alabama

Ten years ago today, we watched the graduation of the senior class of Scottsboro High School. Scottsboro was then a town of relatively small size; today it has become one of the largest cities of the world. Its activity centers in its shops and entertainment features. Located along Broas Street are some of the most exclusive night spots to be found anywhere. One of the most famous is "The Gigolo" owned by Skippy Cunningham, a dashing debonaire man of the world, who employs as his main attraction Nathan "Snake" Black and his Rhythm Rousers with featured singer, Vivienne Webb. Other drawing cards are his hostesses, Saundra Mitchell and Rachel Higginbotham. The other popular night spot is "The Flaming Mame," owned by Pat Roberts, and starring the V. J. Combo led by Val Hamlin. Sharing equal billing are the dance team of Doug Norris and Linda Blackwell, who are known as the High-Steppers, and Don Hodges, a rising new comedian who is becoming known as today's Jonathan Winters.

Not to be outdone is Patsy Sherwood with her string of movie houses throughout the city.

On another street one can find exclusive dress shoppes such as the House of Manning, owned by Eunice Manning, who employs Mary Frances Phillips and Shirley Matthews as her seamstresses. The chief designer is Janice Proctor.

Women of high fashion come from all over the world to have their hair styled by Joyce Goldston. She employs Laverne Holcomb as head manicurist and Fay Lewis cosmetologist.

Robert Reed owns the exclusive restaurant, "22," which is often frequented by playboy David Howell, escorting the high fashion model Carol Bryant and actor, Gary McGuffey, famous for his role as the prince SLEEPING BEAUTY.

One of the town's favorite sons is Roy Reed, author of GENTLEMEN PREFER REDHEADS, a book about his own experiences.

Soon Metro-Hillary Mayer, owned by H. H. (Sonny) Stewart, will film its new picture, starring Wade Deerman, who won an Academy Award for his portrayal of Lt. Rooney in ARSENIC AND OLD LACE. It is to be directed by Jimmy Greene and produced by James Adams, a millionaire because of his ability to pinch pennies.

Scottsboro boasts one of the largest hospitals in the state. It is headed by the eminent surgeon, Doug Hodges, and his capable administrator, Sadie Cross. His competent nurses include: Fay Jordan, Shirley Jacobs and Gayle Muse. Barbara O'linger and Betty Walker serve as dieticians.

The city is also the home of the Scotties, the nations number one Pro football team, managed by Dana Bennet and starring backs Wayne Trece and Bobby Baggett, who with his wife, the former Carol Roden, is raising his own football team.

Entertaining this week at the Municipal Auditorium are the Rockettes, the well-known girls' basketball team, featuring Virginia Lackey and Lillie Sanders.

George Walker an owner of the Stop and Shop Food Stores. Managing four of his stores are Alvin Stewart, Sammy Thomas, Tommy Weeks, and Charles Kirkland. His number one competitor is Parks Tubbs with his Park the Lark Super Mark.

On the outskirts of town are found several large industries. One is the Prince Edwards Tobacco Company, manufacturers of the Scottsboro Nugget, "the cigar you will die to smoke."

Further on is the huge establishment and factory, the Barclay Lumber Company. The owner, Jerry Barclay, always says, "Your furniture is our business."

Cedric's Kennels is part of Colonel John Brewer's estate. Colonel Brewer's a true sportsman and southern gentleman, made his money on the stock market, and

now he spends his leisure time raising animals on his many acres. He employs Randy Bryson and Tommy Hurt as his veterinarians and kennel managers.

Adjoining the Brewer estate are the rolling farm lands of Kenneth Rogers, Larry Henderson, Billy O'linger, who have combined their forces in a cotton monopoly that threatens the South.

The largest library in the south is located in Scottsboro. It contains over one million books, and is capably run by Sue Manning, Barbara Bell, Martha Keeton, and Canna Mae Proctor.

At the Scottsboro Speedway one can see daring race driver Charles Larry Tanner, who drives cars owned by his millionaire wife, Glenda Roberts. The chief mechanic is Ben Miller; his assistants are Billy Matthews and Edward Cornelson. In the same line is Charles Yarbough with his string of "C.B.'s Customized Cars."

Tommy Swancey is the proprietor of Swingin' Swancey's Used Cars. He is known as the "dimpled darling of the used car market." Kenneth Hess, Billy Sanders, and Rayford Guffey are the high pressure salesmen for the Swancey Company.

The Hick's Music Conservatory is well-known, with Jessie Dell Hicks as founder and chief professor.

The Prestwood Nursery School is owned by Sara Prestwood with her co-workers, Carolyn Allen and Mary Dell Cowley. Good customers are Mrs. Joan King Chandler, Mrs. Betty Frazier Green, Mrs. Barbara Middleton Pitts, Mrs. Erma Davis Newell, and Mrs. Ginger Hancock Phillips.

We are reporters for WILD, WILD, WORLD, an all purpose magazine edited by Judy Hubbard. Peggy Wynn acts as executive secretary. The business lawyer and company manager is Franklin Polans, the youngest member of the Bar. Harry Ott is in charge of the printing department, and Brenda Hastings is the public relations department head. Heading the bride's department is Carole Goolesby, and Brenda Garner is in charge of good grooming and fashion department. Blanche Davis provides the jokes and the gossip, and Nellie Selvage is the head of the typing department.

Our mission to the city of Scottsboro was to cover the launching of the first manned rocket, the Wildcat I, to Venus. Before blastoff the Present Governor of Alabama, Allen Lee; gave a stirring message. With him were the first lady of the state, Rita Womack Lee; the first lady attorney-general, Judy Murphy; the state treasurer, Cecil Keith. Entertainment was provided by Governor Lee's campaign band, Jackie Martin's Twangin' Trio. Governor Lee stated that he was proud of the growth of his home town and the honest government it had acquired in spite of the efforts of former Governor, Big Jack Holder and his right hand man, Benny Farr, to make this into another Phoenix City.

Also at the launching was Chief of Staff Douglas Bryant, U.S. Air Force, and Admiral Bobby Southerard, U.S. Navy. As Scottsboro is now the missile center of the world, some of the most brilliant scientists and mathematicians were instrumental in the launching of the Wildcat I. Dr. Carol Sloan, head of the arsenal, and her assistant, Dr. Nita Dawson were on hand to give us a few words, "We hope it goes up!"

Before launching we interviewed Dr. James Porter, who, between dictations to his private secretary, Jackie Green, refused to give us the formula for his special rocket fuel.

We also interviewed the courageous and patriotic astronauts, Wesley Barnett and Johnny Bradford, who stated that they refused to go unless a safe return was guaranteed. Besides, they said "we don't know anybody on Venus!" Then they were forced into the nose cone and the door was shut.

And so WILD, WILD, WORLD closes the door on a view of the progressive city of Scottsboro and the progress it has made since the graduation of the famous class of 1962.

# LAST WILL AND TESTAMENT

We, the Senior Class of Scottsboro High School, Scottsboro, Alabama, being of sound bodies and questionable minds hereby solemnly declare this to be our Last Will and Testament.

To the faculty we bequeath our thanks and everlasting devotion of the patience and wisdom they have shown in trying to teach us something.

To the Senior II Class we, as a whole, leave our title of "Dignified Seniors" and individually will the following to them:

We, Dana Bennett and Glenda Roberts leave our many varied talents to Billy Murrah and Lucy Wilson.

We, Carol Goolseby and Janice Proctor leave to Sudie Stuart and Mary Lou Pace our ability to live life every golden minute.

I, Blanche Davis leave my ability to keep everybody laughing to Sylvia Cornelison.

I, Nita Dawson, leave my even disposition to Martha Haas.

We, Edward Cornelison and Rayford Guffey, leave our dark complexion to Jerry Bellamy and David Hammonds.

We, Brenda Garner and Peggy Jo Wynn, leave our love for one man to Phyllis Davis.

I, Judy Hubbard, leave my place as Editor of the Wildcat to anyone who would like to write the school paper by himself.

I, Donald Hodges, leave my many moods to Paulette Gentle.

We, Fay Lewis, Fay Jordan, and Gayle Muse, leave our places in D. O. to the hard working junior who will work next year.

We, David Howell and Jack Holder, leave our nights of "catten' around" to Butch Foster and Richard Howell.

We, Larry Henderson and Kenneth Hess, leave our front row seats in the auditorium to Kenneth Barclay and Sells Arnold.

We, Shirley Mitchell and Shirley Matthews, leave our name to Shirley James.

I, Cecil Keith, leave my honesty to next year's senior class treasurer, he'll need it.

I, Tommy Hurt, leave my place as class favorite to Gary Bass.

We, Charles Kirkland and Billy Matthews, leave our enthusisam for school to be out to Jerry Smith and Larry Sanders.

I, Allen Lee, leave an unfillable vacancy.

We, Sue Manning and Dennie Mitchell, leave our height to Glenda Hodges and Wanda McCrary, they need it more than we do.

We, Barbara and Billy O'linger, leave our way of being everybody's friend to Loyd and Floyd Woosely.

I, Harry Ott, leave my inquisitive expression to Denford Johnson.

I, Jimmy Porter, leave my keen interests of many things to Dwight Moore.

I, Robert Reed, leave Sudie Stuart my love.

I, Alvin Stewart, leave my dancing ability to any junior who needs it.

I, Mary Frances Phillips, leave my quietness to Cecelia Beard and Patsy Guinn.

I, Rachel Higginbotham, leave my pretty clothes to Carol Derrick.

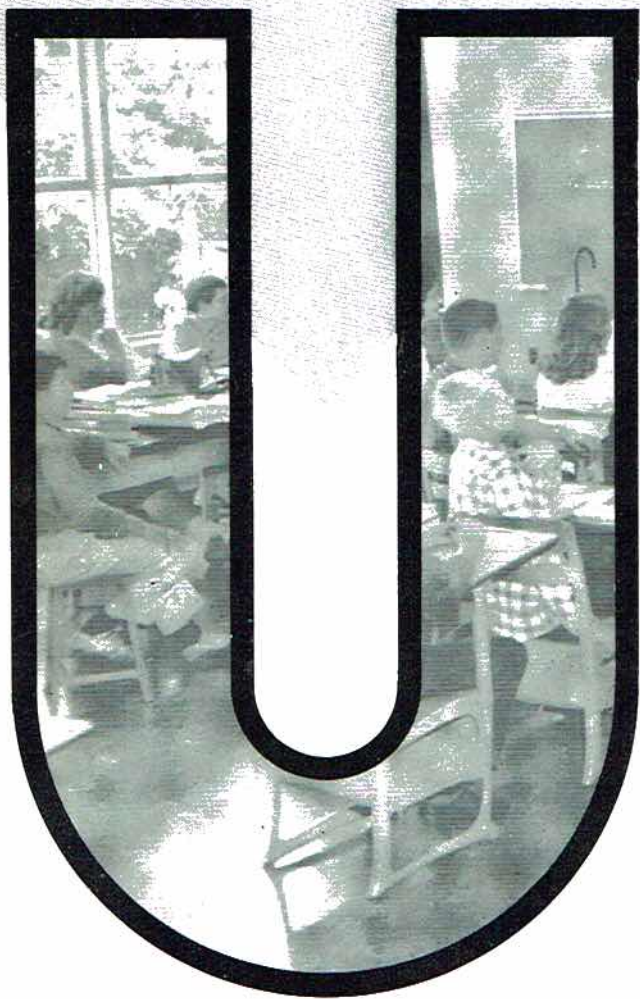
I, Rita Womack, leave my entertaining personality to Barbara Brooks and Patsy Dawson.

I, Tommy Weeks, leave my brother, Doyle Weeks, my brain, he'll need it next year.

I, Brenda Hastings, leave my talent of never making an enemy to Rebecca Wilson.

I, Kenneth Rogers, leave to Walt Cargile and David Keeble my quiet strength.

I, Betty Walder, leave my ability to never get involved to Ruth Venable and Ira Sue Rousseau.  
I, Linda Blackwell, leave nothing because no one else would have it.  
We, Betty Frazier Green, James Adams, Joan King Chandler, Erman Davis Newell, Barbara Middleton Pitts, and Virginia Hancock Phillips, leave our love for married life to Wanda Adams, Carolyn Lusks and any other junior who might take the big step.  
I, Doug Norris, leave my ability to "enjoy a party to Izzy Derrick.  
We, Bobby Baggett and Carol Roden, will our inseparableness to Larry Thoman and Bobbie Nell Womack.  
We, John Brewer and Wesley Barnett, leave our talent as handy men to the junior men who put together the class floats and the prom.  
I, Doug Hodges, leave my mastery of debate to Shirley Wilhelm.  
I, Wayne Treece, leave my love for football to Mike Ashmore and Larry Bolton.  
I, Randy Bryson, leave my unused genius to Barbara Derrick.  
We, George Walker and Val Hamlin, leave Joe Power to take care of the band.  
We, Carol Bryant and Sandra Mitchell, leave our "twist" ability to Paulette Gentle and Brenda Pace.  
I, Nathan Black, leave my newly formed habit of locking car doors to Susan Frazier.  
We, Jessie Delle Hicks and Vivienne Webb, leave our musical abilities to Louretta Nash and Paulette Grider.  
We, Gary McGuffey and Wade Derrman, will our way of leaving a shy impression to David Campbell and Clabourn Edge.  
We, Tommy Swancey and Larry Tanner and Charles Yarbough, leave our love for cars to Roger Carter, Clarence Potter, Robert Sanders, and Don Smith.  
We, Doug Bryant and Carole Sloan, leave our ability to make good grades to Celestine Metcalf, Clay Alspaugh, Nancey Clemens, and Sandra Kennemar.  
We, Johnny Bradford and Jerry Barclay, leave our love for basketball to Donald Cotton and Leroy Armstrong.  
I, Parks Tubbs, leave my wise cracks to Ronnie Drummond.  
We, Sadie Cross, Virginia Lackey, and Lillie Sanders, leave our athletic ability to Elna Vaught, Carolyn Elliot, and Marie Tubbs.  
We, David Howell and Skippy Cunningham, leave our good looks to Gary Bass and Steve Crawford.  
We, Joyce Goldston and Patsy Sherwood leave our interest in college boys to Janith Rogers and Doris Jo Martin.  
We, Carolyn Allen and Mary Dell Cowley, leave our quiet ways to Sharon Lands and Mildred Bellomy.  
We, Nellie Selvage and Eunice Manning, leave our quick smile to Edith Tidwell and Carol Maples.  
We, Canna Mae Proctor and Laverne Holcomb, leave our petite figures to Peggy Aster, Linda Dutton, and Gloria Barnett.  
I, Franklin Poland, leave my blond hair to Lewis Pace.  
I, Barbara Bell, will my front seat to the unlucky junior who gets it next year.  
We, Jimmy Green and Prince Edwards, and Benny Farr, leave our ability to sleep in class with our eyes open to Tommy Gardner, Rayford Hodges, and Carl Latham.



**UNDERCLASSMEN**





Patricia Adkins  
 Betty Allen  
 Clay Alspaugh  
 Carolyn Armstrong



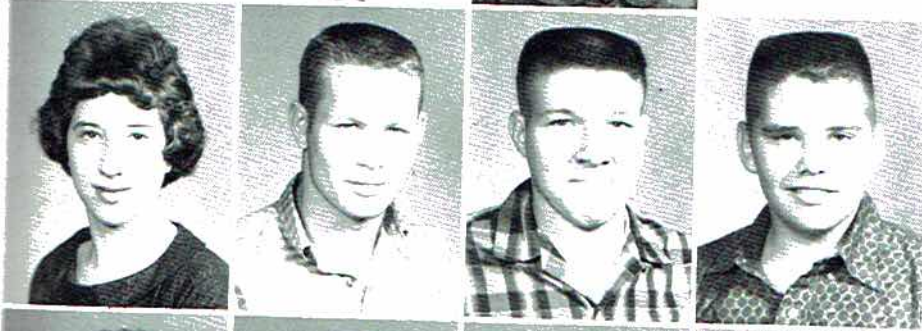
Leroy Armstrong  
 Johnny Arnold  
 Sells Arnold  
 Mike Ashmore



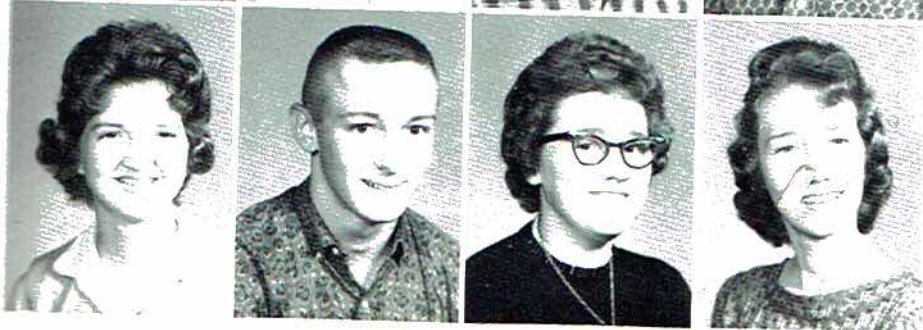
Wanda Atkins Adams  
 Lois Atchley  
 Kenneth Barclay  
 Gloria Barnett



Linda Bates  
 Aubrey Batey  
 Cecelia Beard  
 Jerry Bellomy



Mildred Bellomy  
 Robert Byrd  
 Leon Bufford  
 Raymond Brandon



Barbara Brooks  
 David Campbell  
 Peggy Campbell  
 Peggy Carter

Nancy Clemons  
 Donald Cotton  
 Sylvia Cornelison  
 Steve Crawford



Patsy Dawson  
 Barbara Derrick  
 Carol Derrick  
 Izzy Derrick



Jerry Derrick  
 J. R. Dodson  
 Ronnie Drummond  
 Linda Dutton



Clabome Edge  
 Carolyn Elliot  
 James Evans  
 Winfred Evans



Butch Foster  
 Susan Frazier  
 Tommy Gardner  
 Paulette Gentle



Bobby Gilliam  
 Annette Grider  
 Charles Grider  
 Paulette Grider





Gail Grider  
Patsy Guinn  
Martha Haas  
Betty Hall



David Hammons  
Jimmy Harrington  
Pat Helms  
Rayford Hodges



Carolyn Holt  
Richard Howell  
Peggy Ivy  
Shirley James



Dale Jordan  
Denford Johnson  
David Keeble  
Sandra Kennamer



Carl Latham  
Sharon Lands  
John Lee Little  
Carolyn Lusk Shelton



Carol Maples  
Wade Maples  
Doris Jo Martin  
Ena Faye Martin



Don Smith  
Jerry Smith  
Sudie Stuart  
Faye Thomas



Larry Thomas  
Edith Tidwell  
Bettye Joyce Tiffin  
Marie Tubbs



Bobby Turner  
Elna Vaught  
Ruth Venable  
Raymond Webb



Doyle Weeks  
Charles Whitehead  
Wayne Whitehead  
Shirley Wilhelm



Wanda Wilkerson  
Dale Wilmon  
Diane Wilson  
Lucy Wilson



Rebecca Wilson  
James Word  
Bobbie Nell Womack  
Jerry Womack

Marie Matthew  
 Edna Faye Maynard  
 Ruby McCrary  
 Clestine Metcalf



Billy Murrah  
 Louretta Nash  
 Samuel Proctor  
 Brenda Pace



Lewis Pace  
 Mary Lou Pace  
 Joseph Allen Power  
 Clarence Potter



J. B. Potter  
 Jerry Regan  
 Billie Marie Rodgers  
 Derwood Rodgers



Janith Rogers  
 Ira Sue Rousseau  
 Larry Sanders  
 Robert Sanders



Nora Lee Sebering  
 Parks Sharp  
 Alvie Shelton  
 Alta Smith





Mark Armstrong  
President

# SOPHOMORE CLASS



Robert Dawson  
Vice-President

## OFFICERS



Johnny Harris  
Secretary

Billy Gullatt  
Treasurer



Joyce Adams  
Jimmy Allen  
Martha Angles  
Abbie Arnold



Bishop Arnold  
Roger Ashley  
Sherry Atkins  
Lynn Baker



Jimmy Bankston  
Liz Barnes  
Kenneth Beard  
Jean Beard



Douglas Bellomy  
Mickey Berry  
Paul Berry  
Betty Blancett



Clyde Broadway  
George Bryant  
Anne Bufford  
Glenda Bufford



Nan Bufford  
Thomas Childress  
Sylvia Cornelson  
William Comelison



Charles Hodges  
Dickie Holder  
Vivienne Holt  
Ellis Jeffery



Troy Johnson  
Alva Dale Johnson  
Ronnie Joyner  
Billy Keel



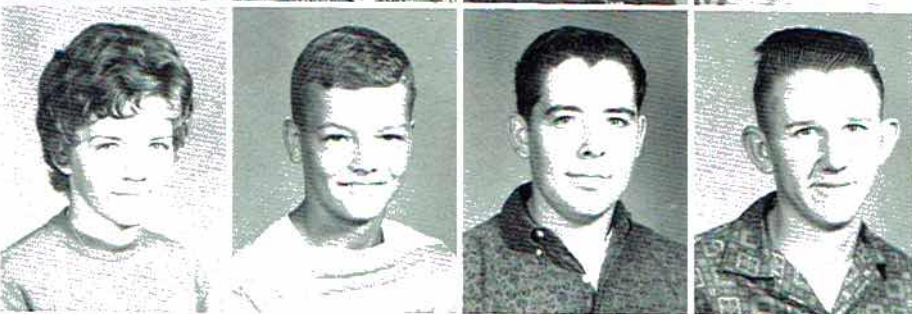
Juanita Kelly  
Nancy Kelley  
Jerry King  
Gail Lee



George Light  
Doris Littles  
Jimmy Maples  
Helen Martin



Joyce Martin  
Mickey Martin  
Richard Matthews  
Leon McClure



Ronnie McClendon  
Annie Mitchell  
Susan Middleton  
Joan Morris







Linda Coulson  
Ina Faye Darwin  
Doris Dicus  
Jim Downey



McAuthor Dudley  
Anna Pearl Dunn  
Katherine Durham  
Carolyn Edmonds



Tommy Edmonds  
Yvonne Edmonds  
Dean Evett  
Wanda Ferguson



Tom Fowler  
Charlotte Frazier  
C. W. Garner  
Barbara Gentle



Patricia Gerin  
Flora Gooselby  
Jerry Grider  
Jerry Hall



Sherry Hamilton  
Charles Hammonds  
Dorothy Heath  
Carole Hodges



Judy Rodgers  
Jimmy Rogers  
Don Roden  
Waco Roberts



Isaac Roberts  
Ellen Roberts  
Lynn Price  
Louise Precise



Peggy Potter  
John Potter  
Edward Potter  
Jimmy Porter



Robert Phillips  
Bonnie Nevils  
Rita Moore  
David Seabolt



Patricia Selvage  
Judy Sharp  
Fames Shavers  
Beulah Shelton



Odie Sherell  
Opal Sherell  
Imogene Sloan  
Terry Smart



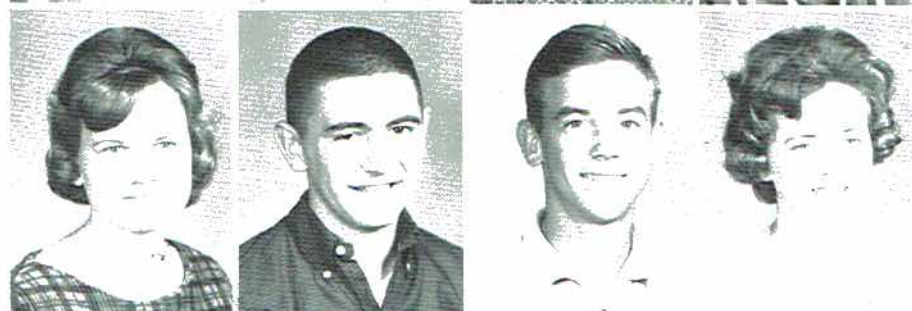
Wilson Smart  
Suzanne Smith  
Patricia Smith  
Bettye Southead



William Southern  
Bob Starkey  
Joanne Starnes  
Shirley Stewart



Sally Tally  
Sue Tally  
Billy Thomas  
Blaine Thomas, Jr.



Sarah Thomas  
Jesse Tubbs  
Bobby Turner  
Janie Underwood



Sue Utley  
Juanita Venable  
Jean Wales  
Rayburn Walker



Jeanette Warren  
Wilma Welch  
Donald Whitehead  
Linda Wilbourn

Judy Williamson  
Alfred Wilson  
Helen Womack  
Marie Womack



Hilda Woosley

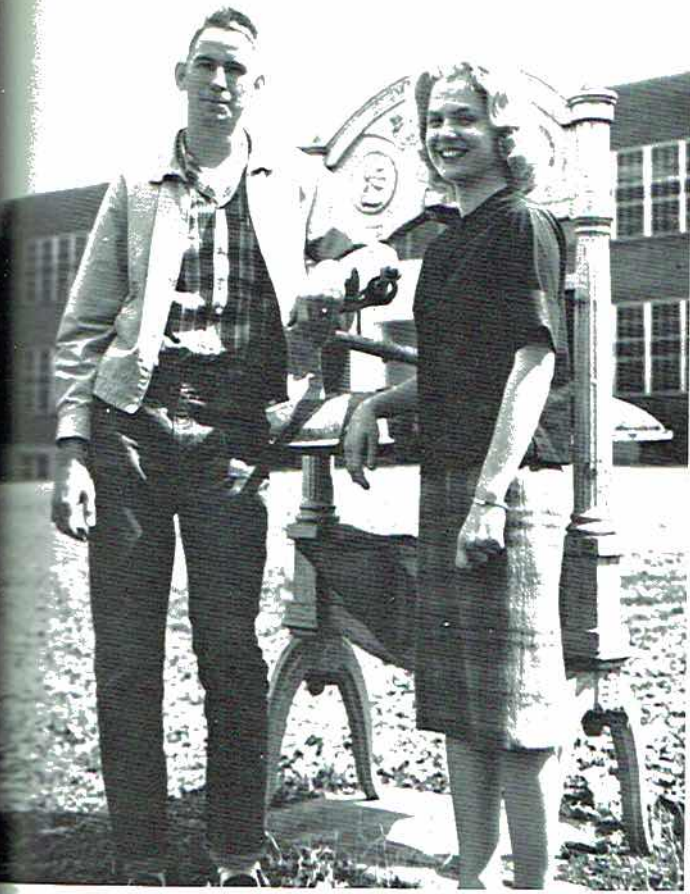




CTIVITIES

# CLASS FAVORITES

SENIORS  
Glenda Roberts  
Tommy Hurt



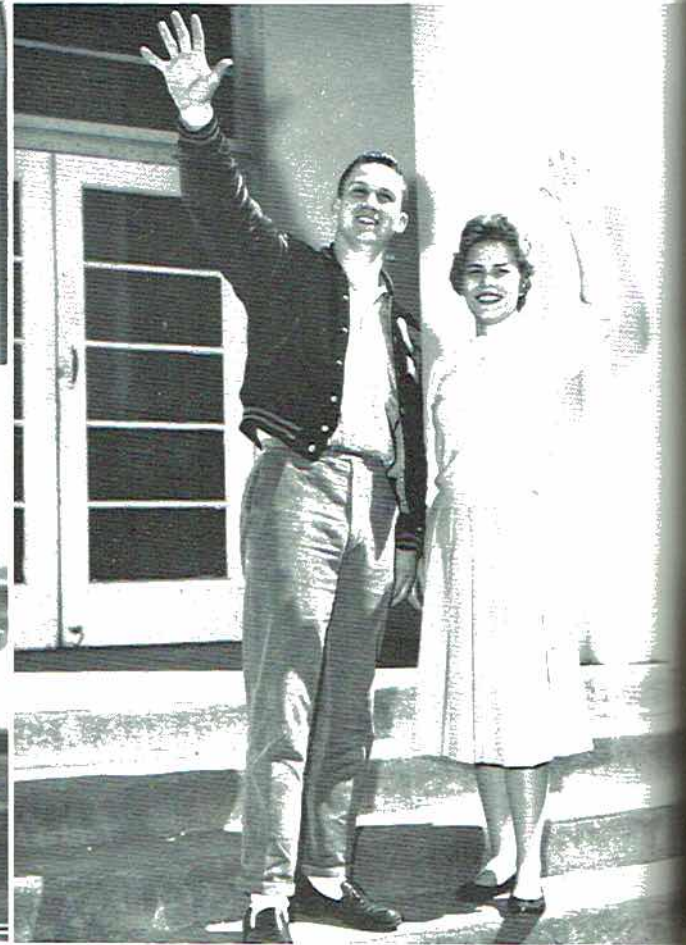
JUNIORS  
Brenda Pace  
Gary Bass

SOPHOMORES  
Judy Williamson  
Robert Dawson

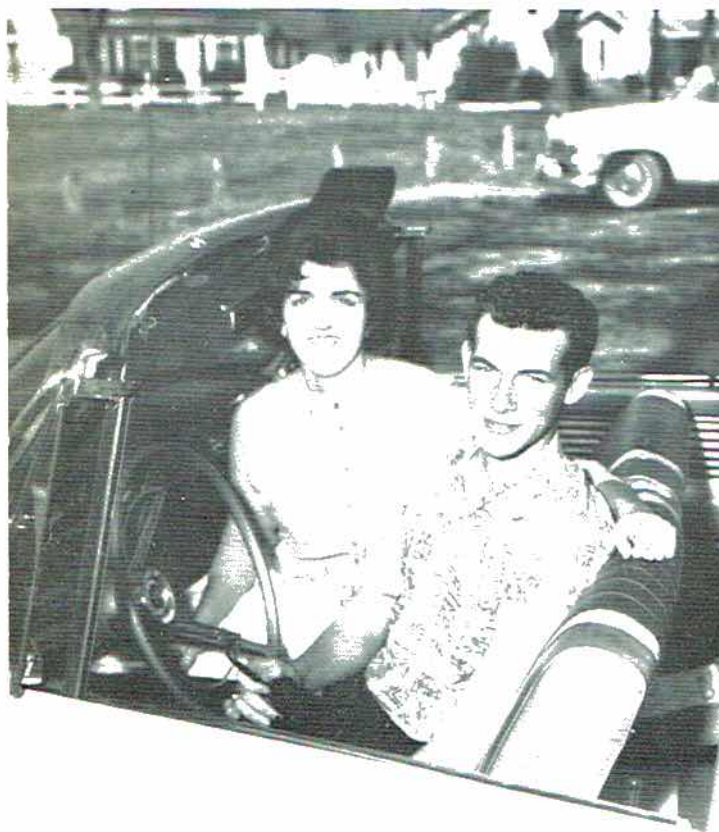




FRIENDLIEST  
David Howell  
Rita Womack



BEST LOOKING  
Wade Deerman  
Carol Roden



MOST POPULAR  
Nathan Black  
Linda Blackwell



BEST ALL AROUND  
Jack Holder  
Judy Hubbard

MOST LIKELY TO SUCCEED  
Allen Lee  
Vivienne Webb



MOST COURTEOUS  
John Brewer  
Joyce Goldston



MOST ATHLETIC  
Wayne Treece  
Virginia Lackey



WITTIEST  
Wesley Barnett  
Patsy Sherwood



MOST STUDIOUS  
Doug Hodges  
Carol Sloan





# JUNIOR-SENIOR PROM

1962





## HOMECOMING QUEEN 1962

MISS LINDA BLACKWELL

# HOMECOMING ATTENDANTS

Carol Roden  
12th Grade Attendant



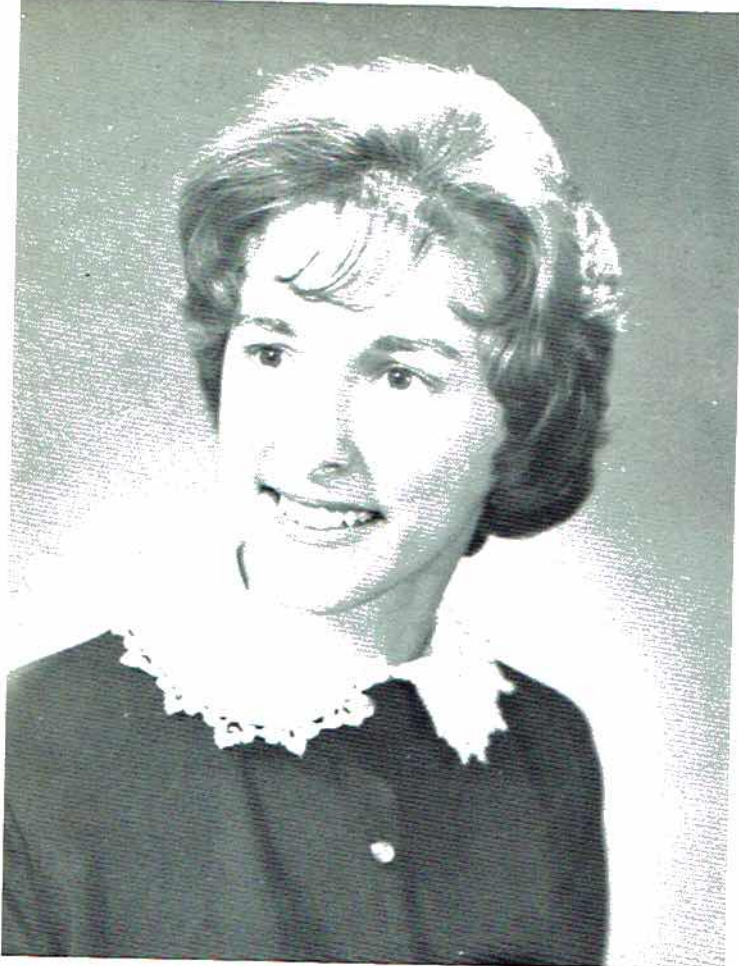
Patsy Dawson  
11th Grade Attendant



Carole Hodges  
10th Grade Attendant

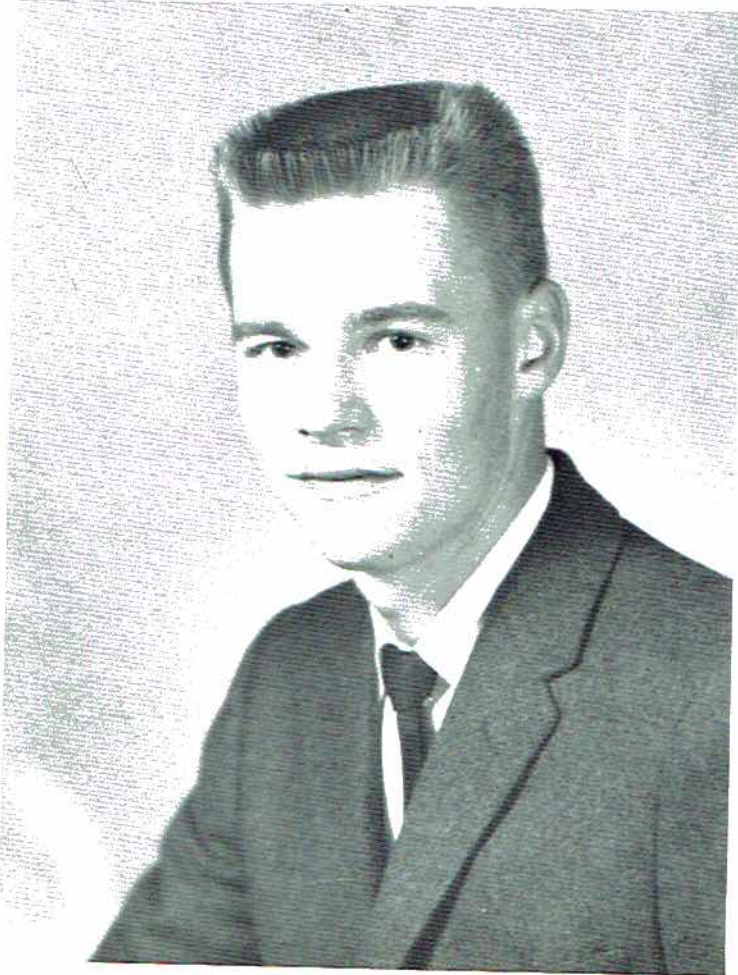
MR. AND MISS

I.  
C.  
T.



Gayle Muse  
Miss I. C. T.  
1962

Jerry Barclay  
Mr. I. C. T.  
1962



1  
9  
6  
2

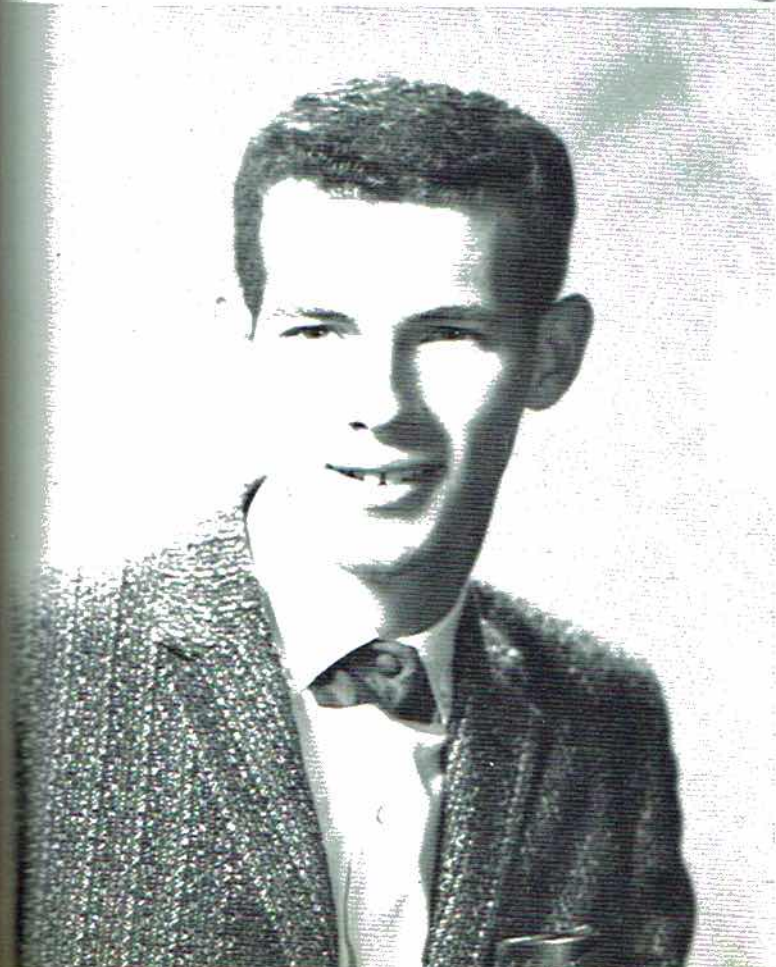
**F. F. A.  
SWEETHEART**

Miss Judy Hubbard



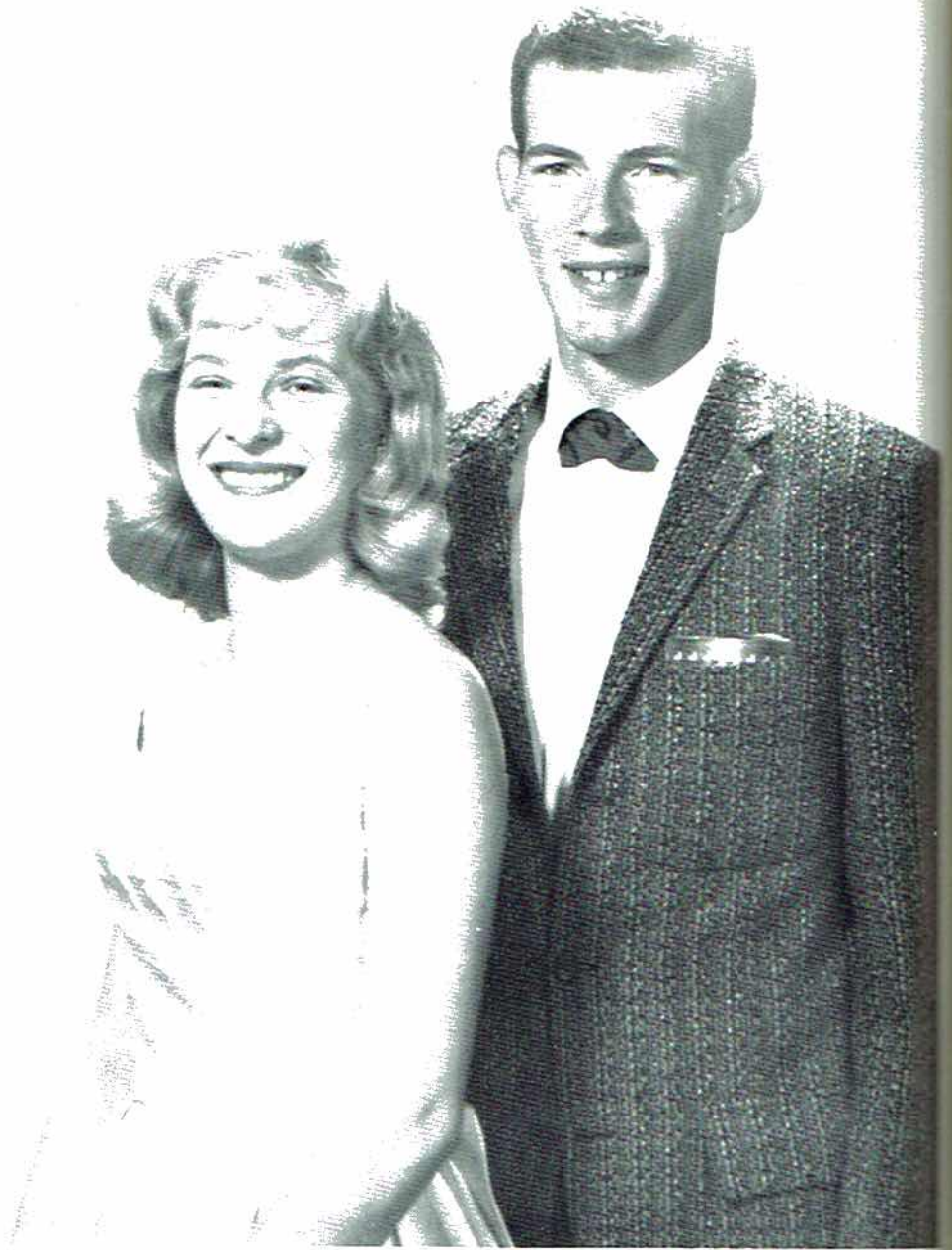
**F. H. A.  
SWEETHEART**

Mr. Nathan Black



Miss Janith Rogers  
1962  
Majorette  
Drummer

Mr. Nathan Black  
1962  
Head Drummer



## S. H. S. BAND SWEETHEARTS

MISS

F.

H.

A.

Carol Derrick



Miss Linda Blackwell

Miss Judy Williamson





**GOOD CITIZENSHIP  
GIRL  
1962**

Carol Sloan



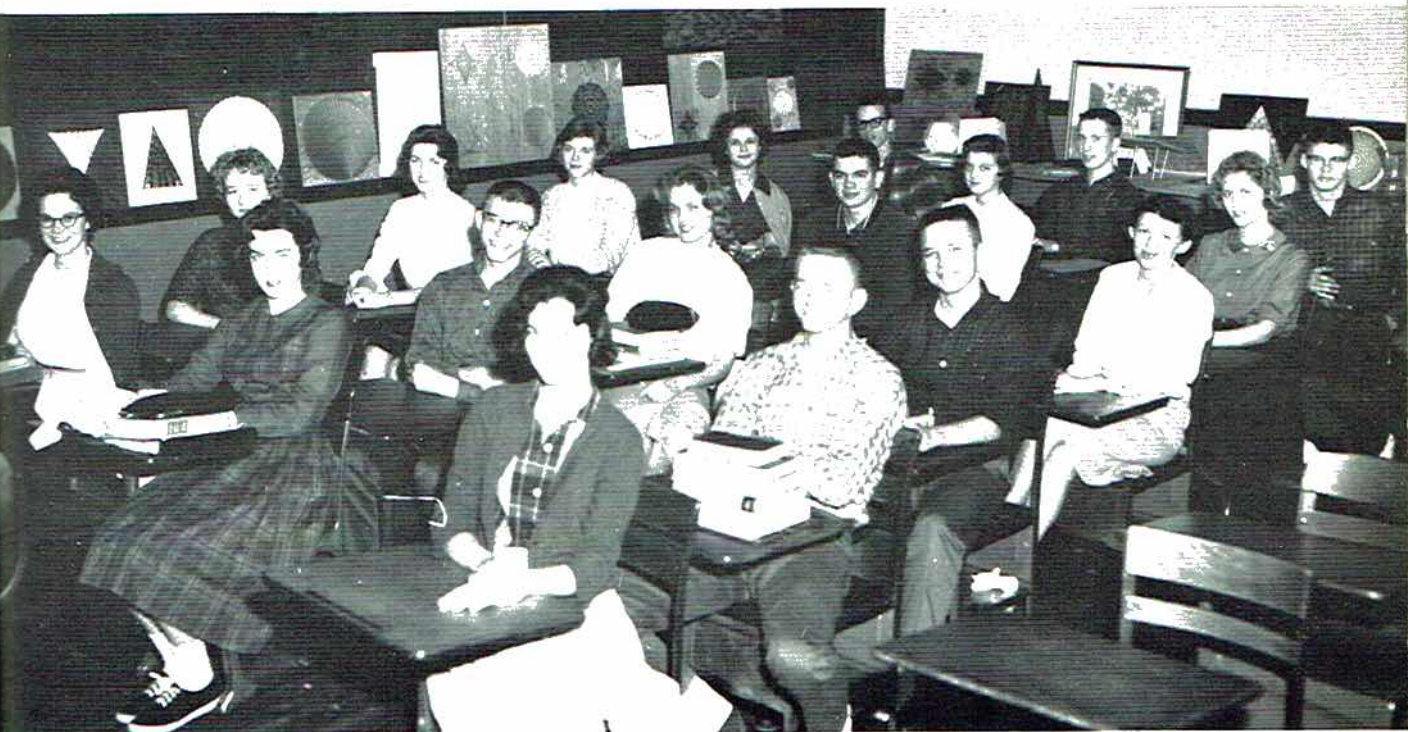
**BETTY  
CROCKER  
HOMEMAKER  
OF  
TOMORROW  
1962**

Vivienne Webb



Elna Vaughn  
Rebecca W  
Armstrong  
Brewer, Su  
Ruth Frazier





## STUDENT COUNCIL

Elna Vaught, Clay Alspaugh, Dwight Moore, Mrs. Sanders, Rebecca Wilson, Robert Dawson, Celestine Metcalf, Mark Armstrong, Glenda Roberts, Allen Lee, Louise Precise, John Brewer, Sue Utley, Nancy Clemens, Virginia Lackey, Billie Ruth Frazier, Abbie Arnold, Doug Hodges.



President . . . . .	Doug Hodges
Vice-President . . . . .	Clay Alspaugh
Secretary . . . . .	Robert Dawson



Mrs. Fred Sanders, Sponsor

OFFICERS

- Secretary . . . . . Celestine Metcalf
- Program Chairman . . . . . Louretta Nash
- President . . . . . Jessie Dell Hicks
- Treasurer . . . . . Judy Hubbard
- Parliamentarian . . . . . Sudie Stuart
- Historian . . . . . Carol Sloan



# FUTURE TEACHERS OF AMERICA



SENIOR  
Keeton  
Rogers,  
MEMBER

Abbie Arnold, Doug Bryant, Nita Dawson, Virginia Lackey, Lucy Wilson, Sandra Kennamer, Mark Armstrong, Robert Dawson, Diane Wilson, Janith Rogers, Gloria Barnett, Glenda Roberts, Annette Grider, Paulette Grider, Rebecca Wilson, Lynn Price, Carol Hodges, Susan Middleton, Joan Starnes, Liz Barnes, Joan Morris, Carol Maples, Joyce Goldson, Linda Blackwell, Carol Derrick, Jerry Derrick, Paulette Gentle, Martha Haas, Betty Allen, Celesting Metcalf, Louretta Nash, Jessie Dell Hicks, Judy Hubbard, Sudie Stuart, Carol Sloan.



Mrs. George Armstrong, Sponsor



SENIOR MEMBERS--Brenda Hastings, Carol Goolesby, Jessie Dell Hicks, Martha Keeton, Barbara Bell. JUNIOR MEMBERS--Brenda Pace, Betty Allen, Billie Marie Rogers, Alta Smith, Carolyn Lusk, Sharon Lands, Edna Maynor. SOPHOMORE MEMBER--Sandra Lanier.

## LIBRARY CLUB



SPONSOR, Mrs. Heath



MEDICAL CAREERS CLUB

MEMBERS--Sadie Cross, Mrs. Lee, Sponsor; Gayle Muse, Susan Frazier, Shirley Jacobs, Betty Hall, Elna Vaught, Nora Sebring, Christine Matthews, Shirley Matthews, Mary Julia Shofner, Janith Rogers, Lucy Wilson, Peggy Potter, Gayle Lee, Rebecca Wilson, Shirley Wilhelm.

OFFICERS

Gayle Muse . . . Treasurer  
 Susan Frazier . . . Secretary  
 Shirley Wilhelm . . . President  
 Shirley Jacobs . . . Vice-President  
 Sadie Cross . . . . . Reporter



# PEP CLUB



CHEERLEADERS--Carole Hodges, Susan Frazier, Carol Derrick, Linda Blackwell, Jean Morris, Judy Hubbard, Gloria Barnett.

OFFICERS--Donald Hodges, Mark Armstrong, Robert Dawson, Nita Dawson.

MEMBERS--Richard Howell, Judy Williamson, Louise Precise, Carolyn Edmunds, Eunice Manning, Lynn Price, Susan Middleton, Carole Maples, Nellie Slevage, Barbara Bell, Janith Rogers, Shirley Wilhelm, Bonnie Nevils, Vivienne Webb, Sudie Stuart, Jerry Derrick, Carol Sloan, Janice Proctor, Rachel Higginbotham, Judy Sharp, Betty Southard, David Howell, Doug Norris, Liz Barnes, Abbie Arnold, Jean Wales, Val Hamlin, Gayle Lee, Peggy Potter, Paulette Grider, Paulette Gentle, Annette Grider, Doug Bellomn, John Brewer, Celestine Metcalfe, Patsy Dawson, Gayle Grider, Edith Tidwell, Carol Bryant, Jessie Hicks, Sandra Mitchell, Joyce Goldston, Lucy Wilson, Louretta Nash, Rebecca Wilson, Elna Vaught, Mary Pace, Wanda Ferguson, Mildred Bellomy, Phyliss Davis, Skippy Cunningham, Carl Latham, Ira Sue Rousseau, Ena Martin, Janie Unerwood, Brenda Hastings, Jean Beard, Linda Coulston, Patricia Selby, Nancy Clemons, Jeanette Warren, Rita Wornack, Barbara Brooks, Allen Lee, Lavern Holcomn, Carol Goolesby, Linda Bates, Diane Wilson, Dwight Moore, Martha Haas, Catherine Durham, Wilma Welch, Donald Whitehead, Bishop Arnold, Clay Alspaugh, Wade Deerman, Ronnie Drummond, Barbara Gentle, Helen Martin, Jimmy Green, Betty Allen, Randy Bryson, Glenda Roberts, Larry Henderson, Wesley Barnett, Leroy Armstrong, Bobby Baggett, Parks Tubbs, Clabourn Edge, David Campbell, Charles Hodges, Jimmy Porter, Jerry King, Billy Gullat, Floyd Woosley, Raymond Webb, Wade Maples, Ellie Garner, Sylvia Cornelison, Cecelia Beard, Joe Power, Linda Dutton, Wanda Adams, Nathan Black, Jesse Tubbs, Terry Smart, Joyce Martin, Carolyn Elliott, Doris Jo Martin, Jimmy Harrington, Nancy Kelly, Ruth Clemons, Bob Starkey, Jimmy Porter, Gary Bass, Hilda Woosley, Billie Marie Rodgers, Clyde Broadway, Joanne Starnes, Dorothy Heath.

# FUTURE HOMEMAKERS OF AMERICA

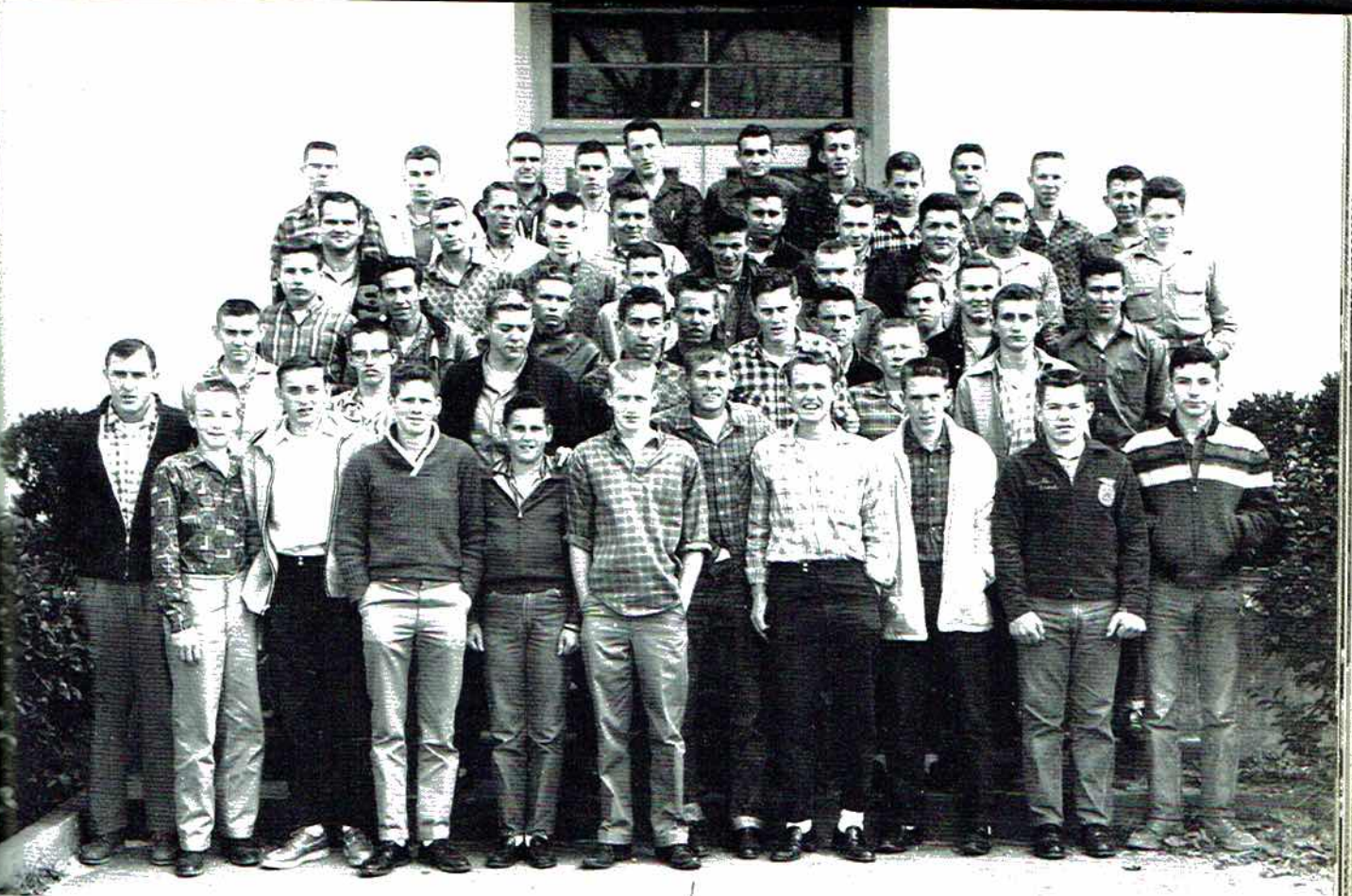


## SECOND AND THIRD YEAR F. H. A.

Linda Blackwell, Nancy Clemons, Carol Derrick, Judy Hubbard, Paulette Gentle, Martha Hass, Glenda Roberts, Sudie Stuart, Patsy Guinn, Barbara Brooks, Dianna Wilson, Ellie Garner, Wanda Adams, Doris Matin, Barbara O'linger, Sylvia Cornelison, Ruth Venable, Marie Matthews, Wanda Fegurson, Ruth Clemons, Mary Phillips.

## FIRST YEAR F. H. A.





F. F. A.

F. F. A.

## MEMBERS

Mr. Cleveland, Doyle Weeks, Lewis Pace, Jimmy Rogers, Larry Tanner, Johnny Arnold, Kenneth Ledbetter, Parks Sharp, Jerry Smith, Sells Arnold, Alvie Shelton, Wayne Whitehead, David Howell, Robert Sanders, Charles Grider, Clarence Potter, Paul Henderson, Troy Reed, Jackie Martin, Aubrey Batey, Leroy Armstrong, Wayne Treece, Ben Miller, Donald Cotten.



# NATIONAL HONOR SOCIETY



Roy Reed  
Tommy  
Gayle M  
Patricia

## N. H. S. MEMBERS 1961-62

Allen Lee, Doug Bryant, Larry Bolton, Carol Derrick, Carol Sloan, Sandra Kenamer, Judy Hubbard, Jessie Delle Hicks, Vivienne Webb, Nita Dawson, Celestine Metcalf, Phyliss Davis, Doug Hodges, Sue Manning, John Brewer, Clay Alsbaugh, James Evans, Mark Armstrong, Jimmy Harrington, Dorothy Heath, Virginia Lackey, Patricia Selby, Betty Allen, Judy Rogers, Cecil Keith, Peggy Wynn, Nancy Clemons, Billy Gullatte, Glenda Roberts, Joan Morris, Gayle Muse, Betty Green, Nora Sebring, Sponsor, Mr. Pendergrass.



MR. J. R. PORCH  
Sponsor



OFFICERS

- Roy Reed . . . . . President
- Tommy Swancey . . . . . Vice-President
- Gayle Muse . . . . . Secretary
- Patricia Adkins . . . . . Treasurer



## I. C. T. CLUB

Gayle Muse, Sadie Cross, David Hammonds, Aubrey Batey, Patricia Adkins, Faye Lewis, Charles Whitehead, Harry Ott, Jerry Ragan, Wade Heal, Roy Reed, Tommy Swancey, Robert Byrd, Kenneth Barclay, Faye Jordan, Jerry Bellomy, Roger Cater, Jerry Barclay, Billy Matthews, Larry Tanner, Jerry O'linger, Doug Bryant, Howard Stewart, Eugene Campbell, James Word.





MISS LILY PORTER  
Sponsor

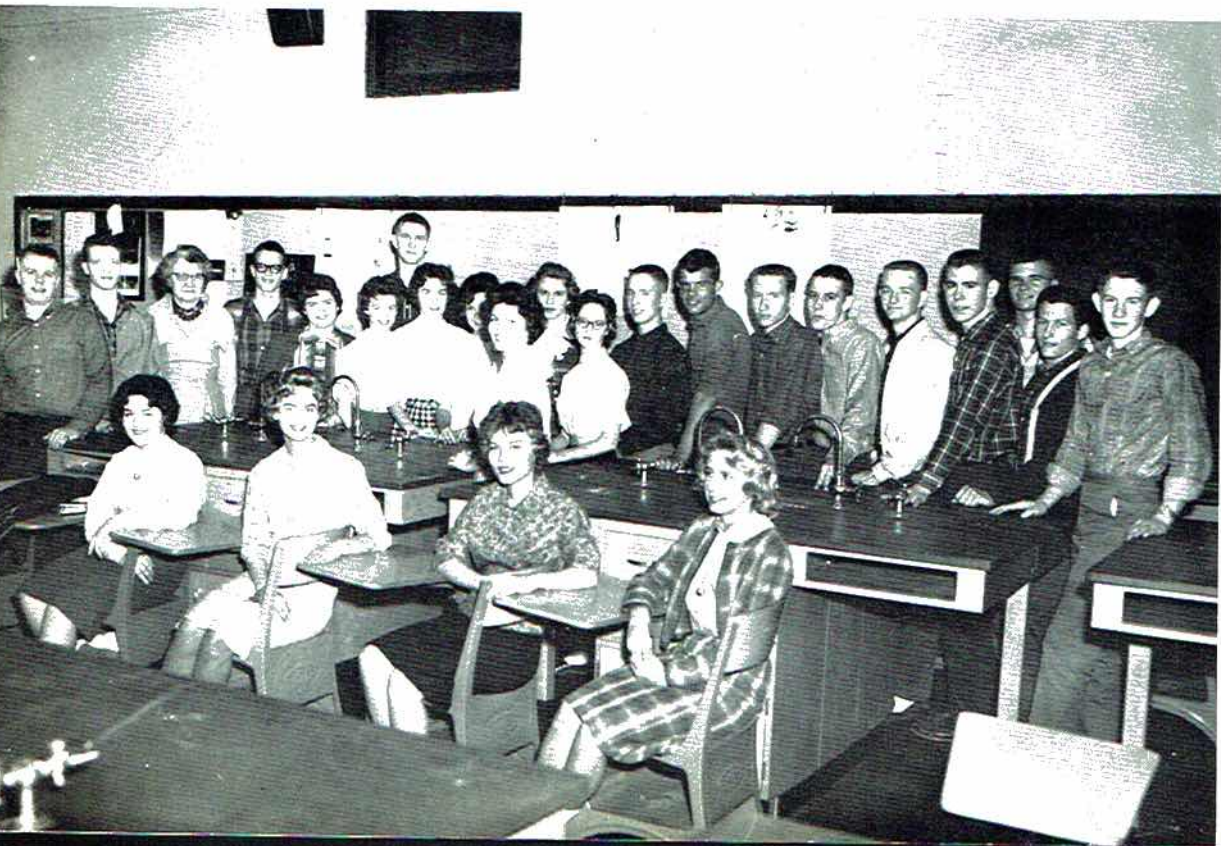


OFFICERS

- John Brewer . . . . . President
- Clay Alspaugh . . . . . Vice-President
- Carol Sloan . . . . . Secretary
- Johnny Bradford . . . . . Treasurer
- Sudie Stuart . . . . . Reporter

SCIENCE  
CLUB

MEMBERS--Nita Dawson, Carol Derrick, Rita Womack, Sudie Stuart, Donald Hodges, Val Hamlin, Doug Hodges, Vivienne Webb, Jerry Derrick, Johnny Bradford, Celestine Metcalf, Louretta Nash, Carol Sloan, Lucy Wilson, Jessie Dell Hicks, John Brewer, Carl Latham, Jimmy Porter, Skippy Cunningham, Clay Alspaugh, Larry Bolton, Billy Murrah, Bobby Gilliam, Jimmy Harrington.



MEM  
Blac  
Roge  
Dwig  
Bryan

# SPORTSMAN CLUB



MEMBERS--Skippy Cunningham, John Brewer, Jimmy Green, Bobby Baggett, Mickey Martin, Nathan Black, David Howell, Ronnie Drummond, Larry Sanders, Richard Howell, Sonny Stewart, Kenneth Rogers, Raymond Brandon, Cleve Childress, Terry Smart, Don Hodges, Mike Ashmore, Tom Fowler, Dwight Moore, Larry Bolton, Charles Hodges, Billy Gullat, Jim Downey, Ronnie Joyner, Doug Bryant.

NO SMOKING



MEMBERS--Jerry King, Robert Dawson, Jesse Tubbs, Bob Starkey, Wade Deerman, Jack Holder, Gary McGuffey, Skippy Cunningham, Bishop Arnold, Mark Armstrong, Butch Foster, Mike Ashmore, Clabourn Edge, Larry Bolton, R. C. Womack, Ellis Jeffery, David Campbell, Jerry Smith, David Howell, Bobby Baggett, Parks Tubbs, Johnny Bradford, Donald Whitehead, Jimmy Bankston, Charles Hodges, Jimmy Shavers, Doug Norris, Dana Bennett, Wade Maples, Wayne Treece, Doug Bellamy, Ronnie Drummond, Raymond Webb, Robert Phillips, Leroy Armstrong, Donald Cotton.

"S"  
CLUB



## OFFICE ASSISTANTS

Mary Lou Pace, 3rd period; Mrs. Nelson, Secretary; Phyllis Davis, 2nd period; Mark Armstrong, 1st period; Richard Howell, 6th period; Suzanne Smith, 5th period; Allen Lee, 4th period.



Carol Sloan  
Head Majorette



Janith Rogers

Shirley Wilhelm



Louretta Nash

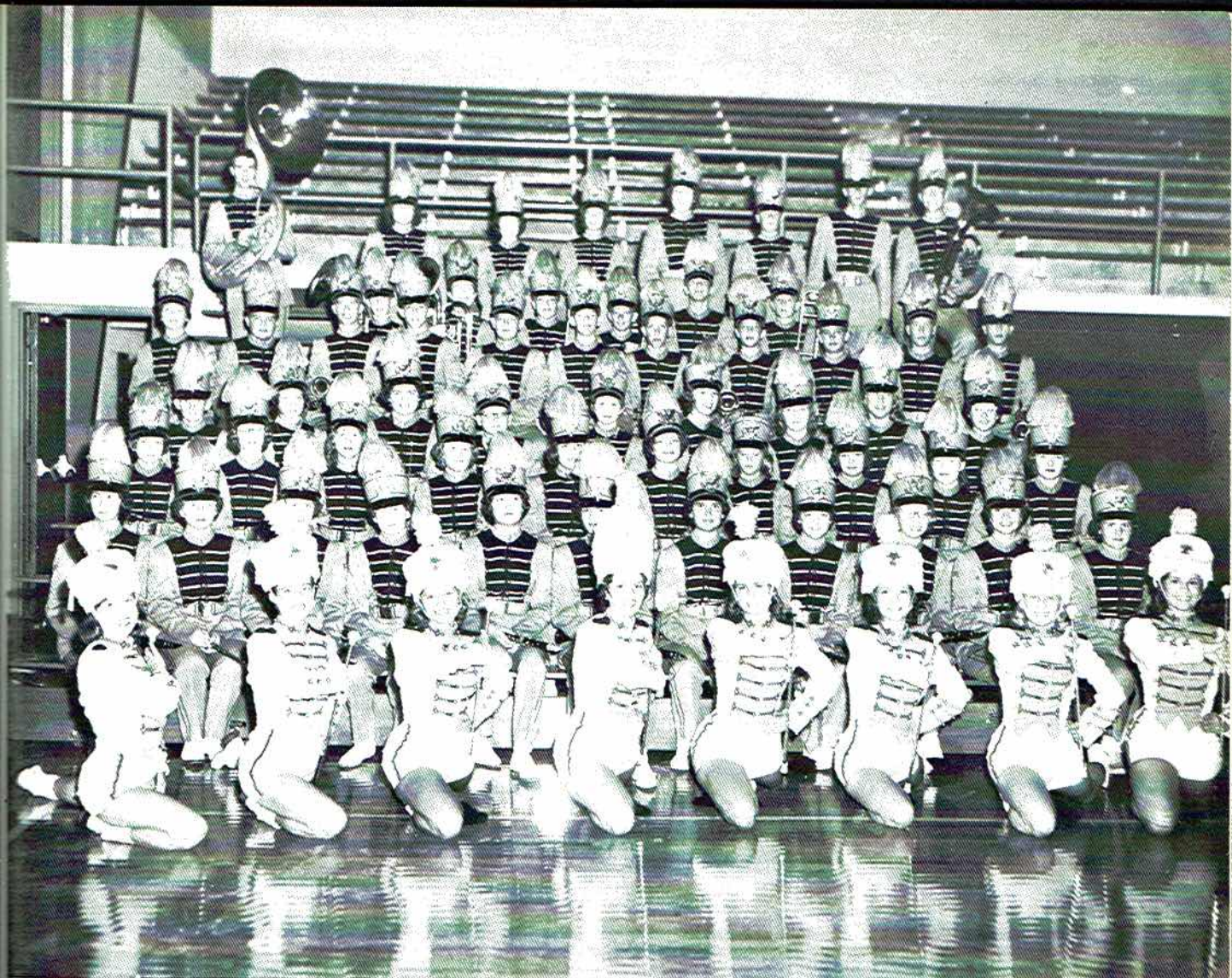
Lynn Price

Liz Barnes

Patsy McNeil

Abbie Arnold





## S. H. S. BAND

BAND MEMBERS--Rita Rudder, Marth Bramlett, Judy Dason, Gayla Nash, Glenda Chaney, Louise Precise, Lucy Campbell, Jeannie Muse, Dorothy Heath, Judy Kennamer, Jessie Hicks, Bobby Womack, Suellen Harris, Bunnie Bradford, Carol Cordell, Bill Parks, Joe Power, George Walker, Sue Cash, Becky Barclay, Pat Roberts, Larry Derrick, Nathan Black, Randy Bryson, Jean Martin, Sue Thompson, Myron Gardner, Gary McBride, Kris Poole, Pam Mitchell, Margaret Proctor, Alva Johnson, Jean Wales, Vivienne Webb, Louis Page, Lynn Gladdish, Susan Durham, Linda Campbell, Lucy Wilson, Joanne Starnes, Sue Neyman, Tommy Derrick, Johnny Mac Green, Ronald Brandon, Clyde Broadway, John Fred Armstrong, John Brewer, Val Hamlin, Ricky Boles. MAJORETTES--Liz Barnes, Patsy McNeil, Shirley Wilhelm, Head Majorette, Carole Sloan; Lynn Price, Louretta Nash, Janith Rogers, Abbie Arnold.

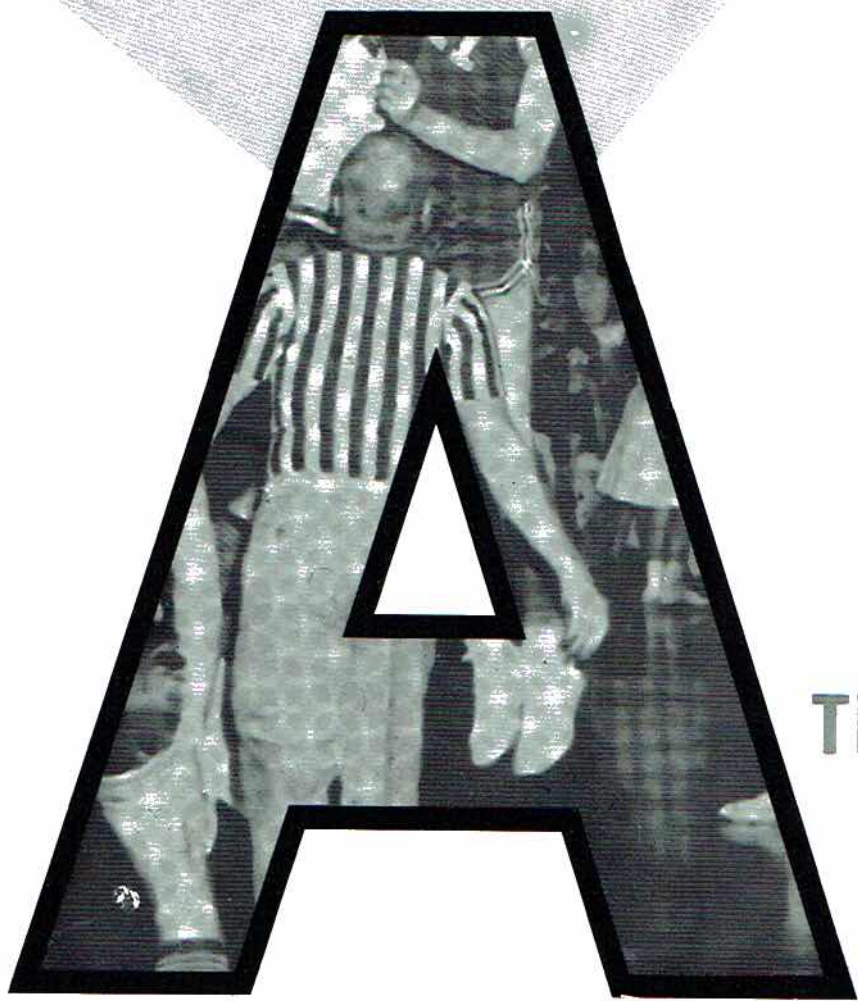


# CHEERLEADERS

1961-62



Sponsor, Mrs. Sloan  
Head Cheerleader, Linda Blackwell  
Judy Hubbard  
Carol Derrick  
Gloria Barnett  
Carole Hodges  
Susan Frazier  
Jean Morris



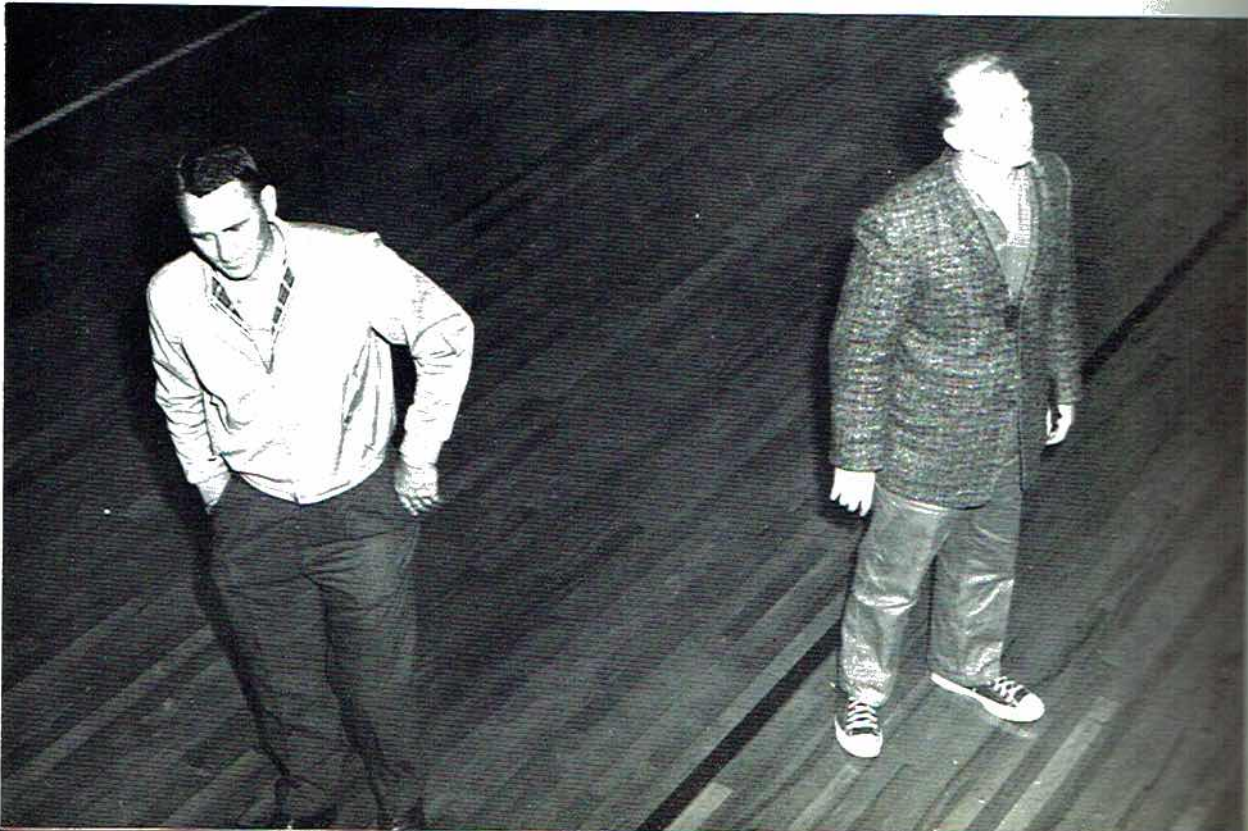
**THLETICS**



FOOTBALL COACHES  
Coach John Meadows and Coach Robinson

## COACHES

BASKETBALL COACHES  
Coach Q. K. Carter and Coach John Meadows





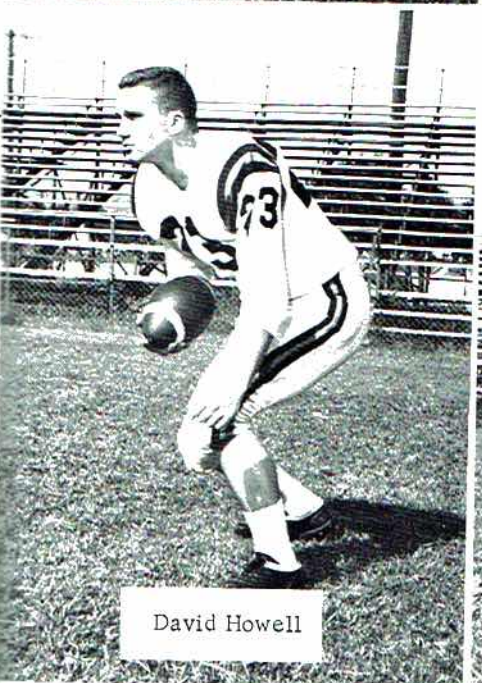
Bobby Baggett



Douglas Bryant



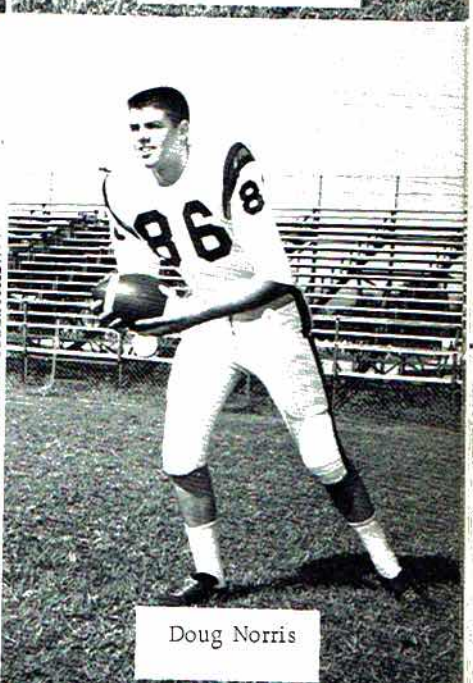
Wade Deerman



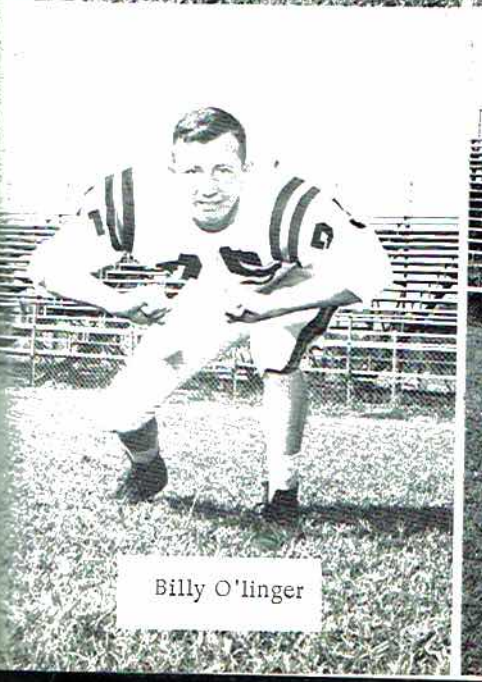
David Howell



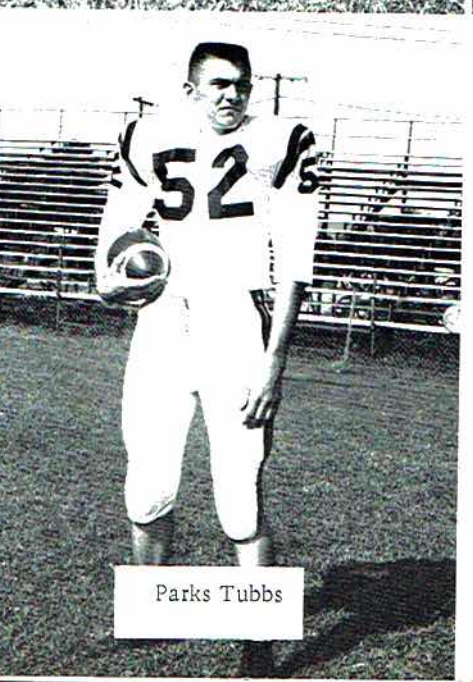
"Mutt" McGuffey



Doug Norris



Billy O'linger



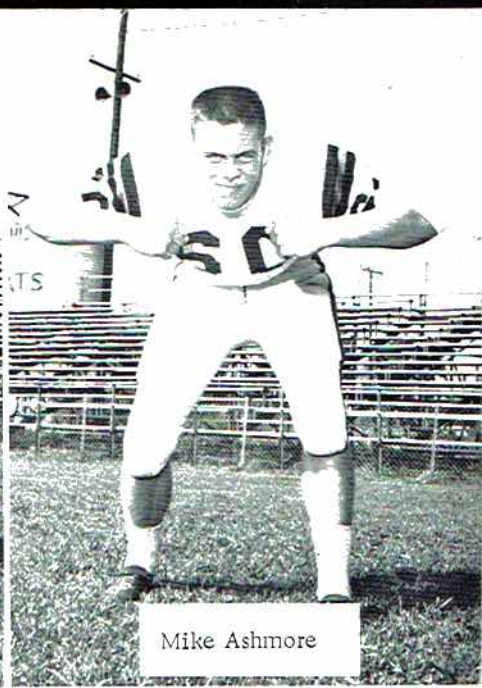
Parks Tubbs



George McKee



Johnny Arnold



Mike Ashmore



Larry Bolton



Robert Byrd



Butch Foster



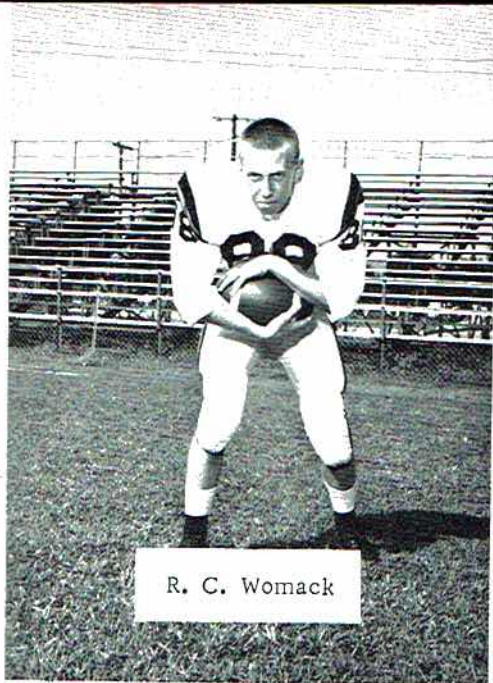
David Campbell



Ronnie Drummond



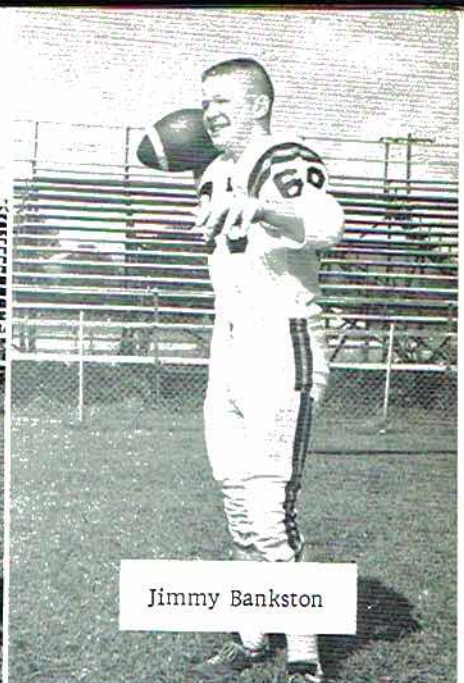
Je



R. C. Womack



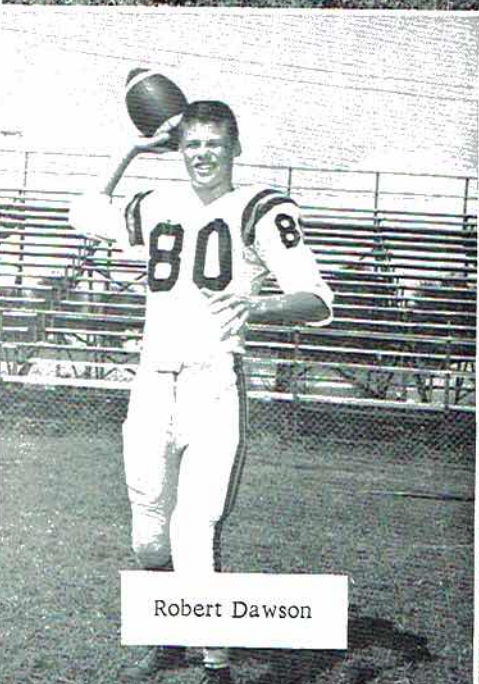
Raymond Webb



Jimmy Bankston



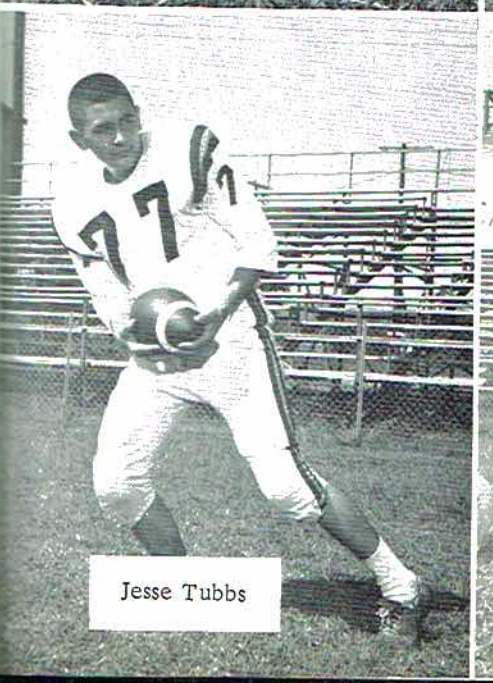
Cleve Childress



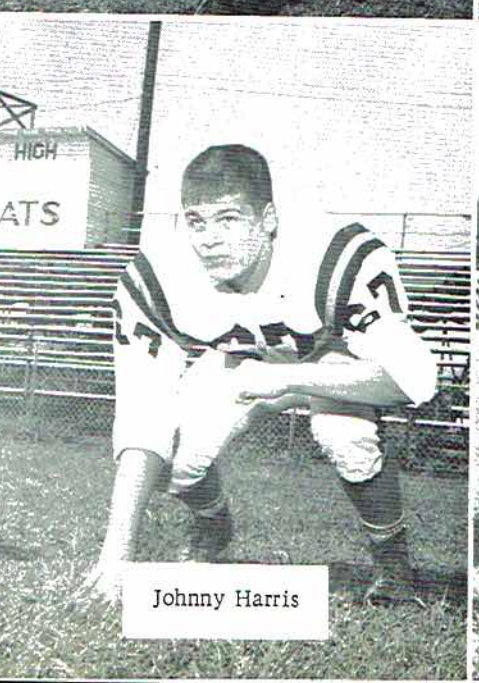
Robert Dawson



Clabourn Edge



Jesse Tubbs



Johnny Harris



Wade Maples



Mark Armstrong  
Sophomore

Clay Alspaugh  
Junior



Leroy Armstrong  
Junior

David Campbell  
Junior



Donald Cotton  
Junior

Larry Bolton  
Junior





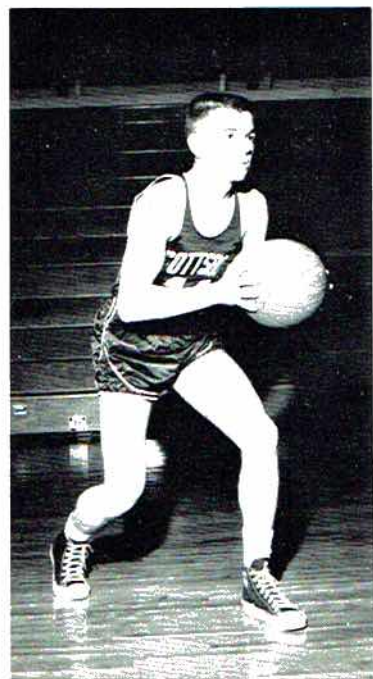
Jerry Barclay  
Senior



Skippy Cunningham  
Senior



Johnny Bradford  
Senior



Allen Lee  
Senior



Wade Deerman  
Senior



Brown and Bergman Furniture Company  
Ladies and Children Shop  
Chambers Store  
Darwin's  
David Lee's Store  
Firestone Store  
V. J. Elmore Store  
Gist Jewelry  
Julian Hambrick Gift Shop  
Hembree Insurance Agency  
Hammers's Department Store  
Hodges's Drug Store  
Jones Dry Goods Store  
Jackson County Sentinel  
Kate's Coffee Shoppe  
Lay and Company  
Adam's Department Store

**COMPLIMENTS  
OF**

**SCOTTSBORO  
RETAIL  
MERCHANTS  
ASSOCIATION**

McCamy Drugs  
Couch Furniture  
W. H. Payne Drug Company  
Pioneer Finance Company  
The Printing Mart  
Proctor and Steeley  
Quality Store  
The Red Hot Store  
Reid's Sundries  
Sterchi Brothers  
Scottsboro Jewelers  
Scottsboro Shoe Store  
State Farm Insurance  
Thomas Drug Store  
Upholstery Shoppe  
Wales Jewelry Company  
Woodall's Ready-to-Wear

**STATE  
NATIONAL  
BANK**

"One of The Many  
Good Banks Serving  
North Alabama"  
Call - 574-2244  
Laurel Street

**FARMERS  
OIL CO.**

Hwy. 72  
G. B. Holder  
Owner & Manager  
-  
Stevenson, Ala.

Compliments of  
PROBATE  
JUDGE'S  
OFFICE

Congratulations  
Seniors  
RED HOT  
STORE

HEMBREE  
INSURANCE  
AGENCY

Compliments  
of  
BLACKWELL'S  
FEED AND SEED

Compliments  
of  
PAYNE'S DRUG

Compliments  
of  
ELIZABETH'S  
SHOE BOX

Compliments  
of  
COPLIN  
HARDWARE

Compliments  
of  
GRUBTOWN  
U. S. A.  
Ph. 574-1491

Compliments  
of  
BROWN & BERGMAN  
FURNITURE CO.  
Ph. 574-1494

Compliments  
of  
SHERIFF OF  
JACKSON COUNTY

Compliments  
of  
W. J. WORD  
LUMBER CO.  
Ph. 574-3858

CAMPBELL  
OIL CO.  
Phone 574-1310  
Scottsboro, Alabama

Compliments  
of  
LADIES' AND  
CHILDREN SHOPPE

Compliments  
of  
BUTLER AND  
KENNAMER

WORD MOTOR CO.  
Oldsmobile - Oldsmobile  
Sales and Service  
Scottsboro, Alabama

HARBIN MOTOR CO.  
Ford - Mercury Dealers  
Phone 574-1819  
Scottsboro, Alabama

Congratulations Seniors  
PARKS  
Scottsboro, Alabama

L. D. COBB  
GROCERY  
Scottsboro, Alabama

Compliments  
of  
PIGGLY WIGGLY  
Scottsboro, Ala.

Congratulations Seniors  
WOODALL'S  
Clothing Store

**FIRST NATIONAL  
BANK**

Growing With And  
Serving Scottsboro  
And Jackson County  
For Over 50 Years.

206 Broad - PH. 374-3313

Laurel & Caldwell  
PH. 574-2500

Scottsboro, Alabama

**BANKING CO. INC.**

Large Enough To Serve You  
Small Enough To Know You  
Strong Enough To Protect You

Broad and Willow  
Scottsboro, Alabama  
Dial 574-1516

**SCOTTSBORO  
BOWLING  
LANES**

Bowl With Your  
Friends at The  
Scottsboro Bowling  
Lanes.

Compliments  
of

**MEADOW  
GOLD  
OF  
ALABAMA**