

1956

Mr. [illegible]







*The  
Reminder*

*Jackson County High School,  
Scottsboro, Alabama*

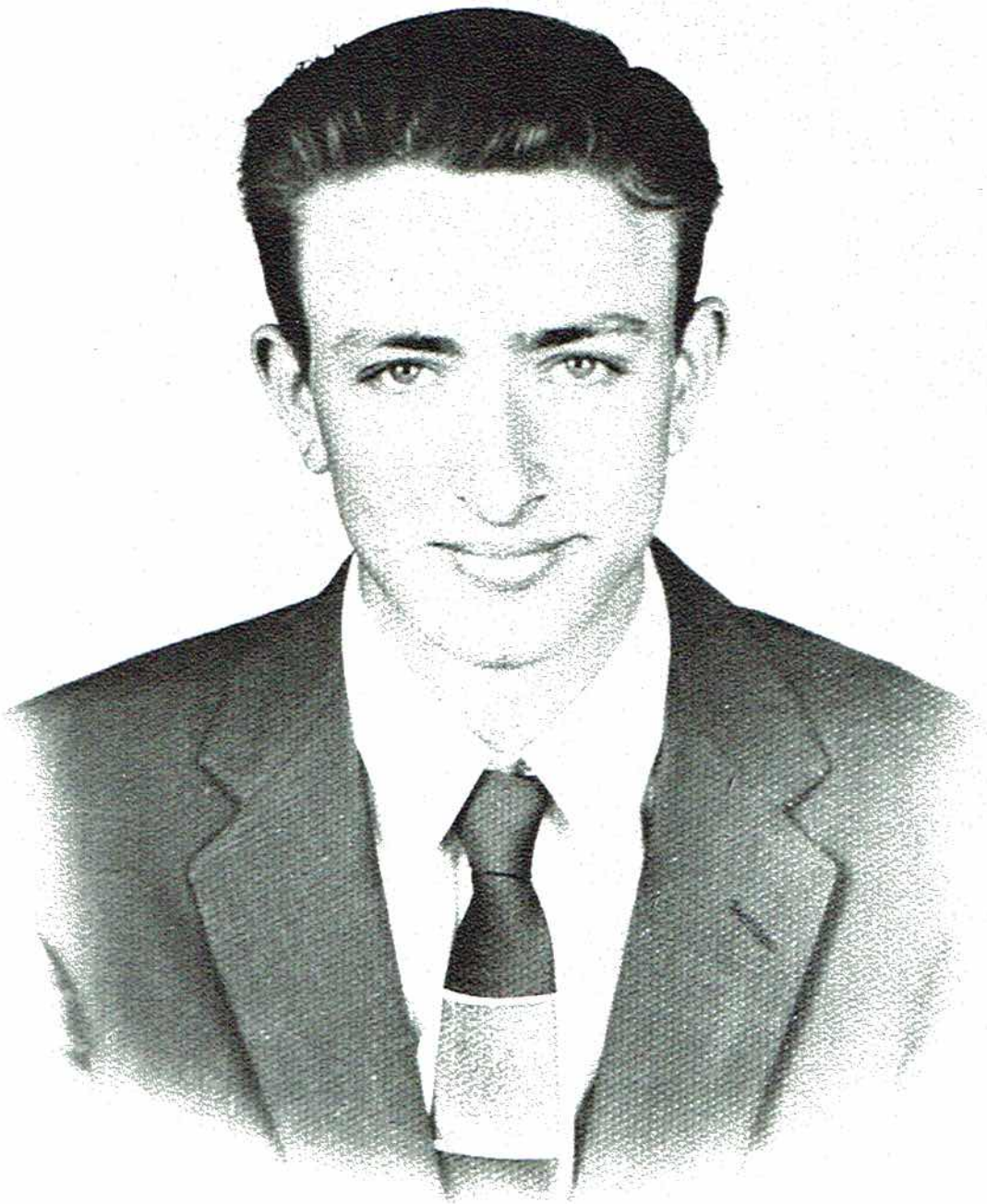




## *Foreword . . . .*

The purpose of this book is to present a tangible record of the lights and shadows of a school that we can never forget. On the pages of this book is written the story of one of the happiest years of our lives. The Annual Staff of 1956 invites you to join us in reliving these experiences. As you delve through the pages, may your enjoyment equal ours.





## *In Memoriam - -*

Tommy Chandler, member of the 1956 graduating class, passed away on February 28, 1956. Tommy was the son of Reverend and Mrs. Pleas Chandler, Route one, Hollywood, Alabama. His smiling face, pleasant words, and winning ways will be revered in the hearts and minds of the students of this school as a lasting monument to his name.





M. G. COUCH  
Principal

# Faculty



MRS. GEORGE ARMSTRONG  
Mathematics



GEORGE BAKER  
Band



Q. K. CARTER  
Coach



MRS. M. G. COUCH  
Librarian



JACK CORNELIUS  
Coach



MRS. NEWMAN DAVIS  
English, Public Speaking

MISS BEATRICE FINNEY  
Core, English



MRS. DELBERT HICKS  
English, Social Studies



MRS. FRANK HODGES  
Glee Club, Mathematics



MRS. SAM HODGES, JR.  
Democracy, English,  
Social Studies





MRS. RUDOLPH JONES  
English, Social Studies



MRS. J. A. LEE  
Science, Mathematics



MRS. SAM McCRARY  
Core, Mathematics, English

MISS CORA MICHAELS  
Mathematics



MRS. KENNETH MUSE  
Commercial



LEWIS W. PAGE  
Social Studies

H. E. PHILLIPS  
Agriculture



MISS LILLY PORTER  
Science



WILLIAM T. SLOAN  
Science, Mathematics



MRS. WILLIAM T. SLOAN  
Physical Education

MISS GERTRUDE STOCKTON  
Core, Science

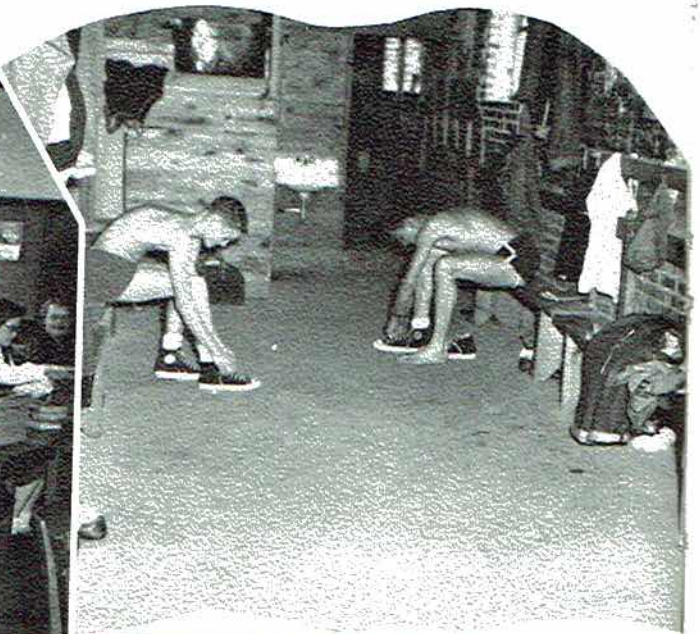
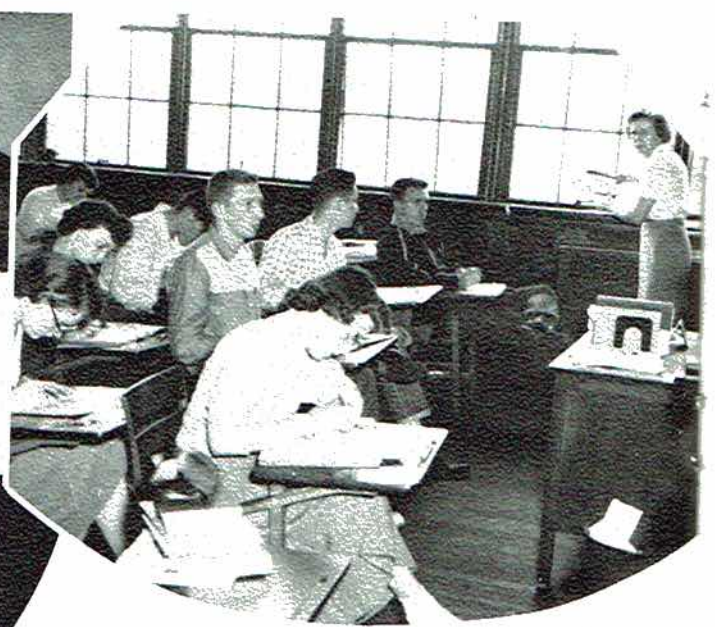
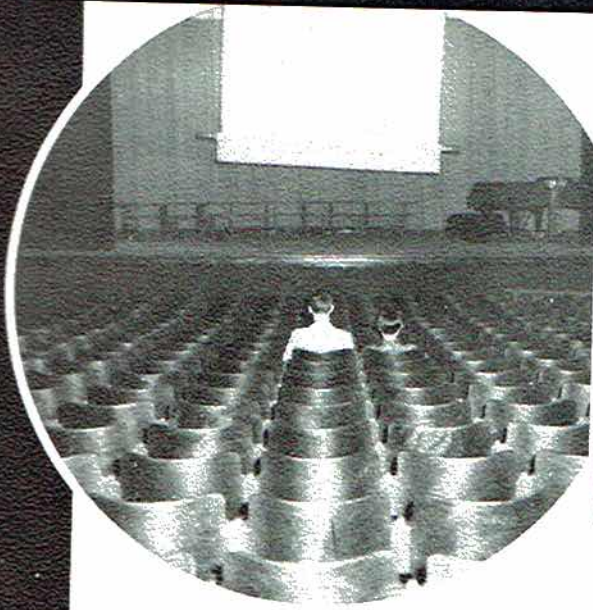


MRS. BOYD TURNER  
Home Economics

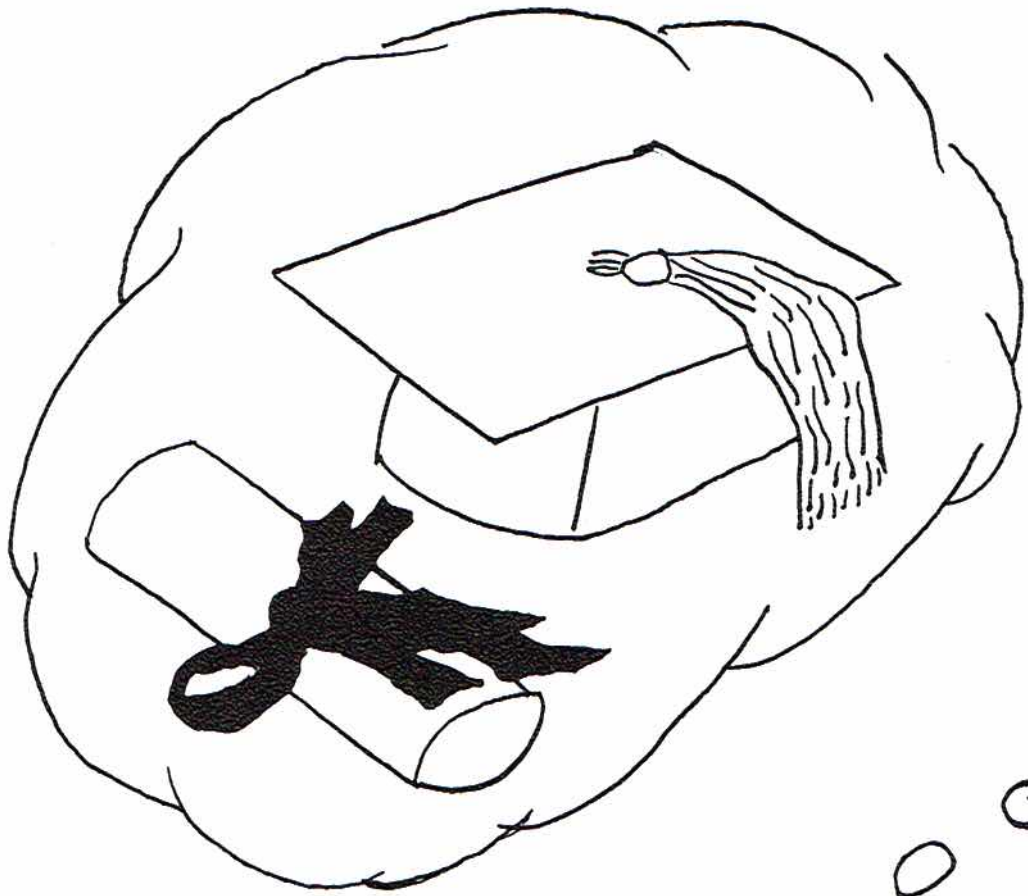
MRS. GAY VAUGHT  
Core, English

MISS VIRGINIA WEST  
Core, English









Classes



Stewart





**ROBERT SKELTON**  
 "Man is the hunter,  
 woman is his game."  
 Football '52, '56, Captain '56; Beta Club  
 '54, '56; Student Council '54, '56, Vice-  
 President '55; President of Senior Class  
 '56; Boys' State '55; Business Manager,  
 "Wildcat" '56; Sports Editor of Annual '56.

# Seniors



**JIMMY CAMPBELL**  
 "I'll tickle your catastrophe."  
 Glee Club '54, '56; Beta Club '54, '56;  
 President of Glee Club '55; Basketball  
 '52, '54; Football '51, '56, Co-Captain  
 '56; Vice-President of Senior Class '56;  
 Business Manager of "Wildcat" '56.

**JOHN DAVID SNODGRASS**  
 "Actions speak louder than words."  
 Football '51, '52, Student Council '50,  
 '56; President of Junior Class; Treasurer,  
 Manager of Wildcat Staff '53, '54; Busi-  
 ness Manager Annual '55, '56.



**LINDA HALL**  
 "To be, or not to be, that is the question."  
 Band '50, '56, Corporal '53, '54, Sergeant  
 '54, '56; All-State '54, '55; F. T. A. '54,  
 '56, President '55, '56; Wildcat Staff '54,  
 '56, Associate Editor '54, '55; Beta Club  
 '54, '56; Glee Club Accompanist '53, '55;  
 Reminder Staff '54, '56, Editor-in-Chief  
 '55, '56; Secretary Senior Class '55, '56;  
 Student Council '55, '56.

**JO-ANN VAUGHT**  
 "Man has his will, but woman has her way."  
 Band '50, '56, Corporal '53, '54, Sergeant  
 '55, '56; Glee Club '53, '56 Secretary of  
 Glee Club '55, '56; Beta Club '54, '56;  
 F. T. A. '54, '56; Wildcat Staff '54, '56;  
 Assistant Editor of Wildcat '55, '56;  
 Reminder Staff '53, '56; Senior Class Typist  
 '55, '56; Student Council '55, '56.

**BARBARA ALLEN**  
 "Great joys, like griefs are silent"  
 F. H. A. '54, '56.

**DOROTHY ALLEN**  
 "Slow and steady wins the race."  
 F. H. A. '54, '55; Glee Club '55, '56.

**SUSIE ALLEN**  
 "To speak his thought is every free mans'  
 right."  
 Glee Club '54, '56; Annual Staff '55, '56.







**JIMMY BAKER**  
 "You can't judge a horse by his harness."  
 F. F. A. '54, '56.

**BARBARA BARCLAY**  
 "Silence gives consent."  
 F. H. A. '54, '55.

**GLENDA HESS BEARD**  
 "Absence makes the heart grow fonder."  
 F. H. A. '56, Treasurer '56; Student Council '55; Reminder Staff '56.

**JOAN BELLOMY**  
 "A soul as white as heaven"  
 F. H. A. '53, '55, President '55; Glee Club '54, '56, Vice-President '56.

**JOHNNY BOLDING**  
 "A bad excuse is better than none at all."  
 Band '51, '56.

**ELIZABETH BRADFORD**  
 "Little said is soon mended."  
 F. H. A. '54, '55; F. T. A. '55, '56.

**OGLEAR BRADFORD**  
 "Silence in woman is like speech in man."  
 F. H. A. '54, '55; F. T. A. '55, '56; Glee Club '56.



**VIRGINIA RUTH BRANDON**  
 "Hitch your wagon to a star."  
 Beta Club '54, '56; F. H. A. '56, Secretary '56; "Miss Junior High" '53; "Miss F. H. A." '56; Homecoming Queen '56; Majorette '52, '56, Head Majorette '56.

**JAMES C. BRYANT**  
 "Work first and then rest."  
 F. F. A. '54, '56.

**PATRICIA CHAMBERS**  
 "Woman wants but little, nor that little long."  
 F. H. A. '54, '55; Glee Club '55, '56.





BETTYE JO CHANDLER

"We must eat to live and live to eat."  
Treasurer of "Junior Journal" '52;  
Wildcat Staff '52, '56; Annual Staff '56.

TOMMY CHANDLER

"He can because he thinks he can."  
F. F. A. '53, '55.

GUY CLEMENS

"Saying and doing are two different things."  
F. F. A. '54, '56.



LEWIS CORNELISON

"A man is but what he knows."

FLOYD CRAWFORD, JR.

"A deed without a name."  
F. F. A. '54, '55; Football '54; Basketball '55.



LOUISE DAVIS

"While there is life, there is hope."

ALBERT DUDLEY

"Let every man look before he leaps."  
F. F. A. '53, '55.

MARY RUTH DUNN

"Mistress of herself though China falls."  
F. H. A. '54, '55.

JIMMY WAYNE GARNER

"A man's disposition is never known until  
he is crossed."  
F. F. A. '53, '54.

DOROTHY GENTLE

"None but herself can be her parallel."  
Librarian '51, '52; Band '53, '55; F. H. A.  
'54, '55, Glee Club '55, '56.







HARLON G. GOOLSBY  
"None but the brave deserves the fair."

NINA GROSS  
"The sum of earthly bliss."  
Home Economics '54; Glee Club '55, '56.

CLARENCE HALL  
"Some men talk only to counsel the mind."

PAT HAMILTON  
"Little but loud."

EVELYN LUELLA HAMMONS  
"A quiet conscience makes one serene."  
Reminder Staff '56.

BETTY SUE HASTINGS  
"What we wish we believe."  
Band '53, '56; Wildcat Staff '52, '56;  
Reminder Staff '56; All-State Band '55;  
President 4-H Club '52; Bookkeeper of  
Band '54.

INEZ HAWKINS  
"Above the cloud with its shadow is the  
star with its light."  
(Transfer from Geraldine '55, '56.)



HELEN HOWARD  
"All that glistens is not gold."  
Wildcat Staff '50, '56; Reminder Staff '55,  
'56; Beta Club '54, '56; Librarian '54; Glee  
Club '55.

TOMMIE RUTH HUBBARD  
"Nothing is impossible to a willing heart."  
F. T. A. '54, '56; Beta Club '54, '56; Treas-  
urer of Junior Class '55; Annual Staff '56;  
F. H. A. '54; Good Citizenship Girl '55, '56.

BILLIE JEAN ISBELL  
"The hearing ear and seeing eye."  
Glee Club '54, '55; Home Economics '53,  
'56.





**DONALD JACOBS**

"Every dog has his day."  
F. F. A. '53, '55; Basketball '50, '55.

**GAIL JAMES**

"A woman has nine lives like a cat."  
Wildcat Staff '52, '53; Beta Club '54, '56; Glee Club '55; Annual Staff '52.

**KENNETH JARRELL**

"The monster laughed at me."  
Glee Club '54, '56; President Glee Club '55, '56.



**MARY VIRGINIA JONES**

"The quarrels of lovers are the renewal of love."  
Glee Club '53, '55; F. H. A. '53; Band '53; Wildcat Staff '51, '56; Reminder Staff '56.

**JO ANNE KENNAMER**

"Women do not have friends--they only have rivals."  
Band '50, '56, Corporal '54, Sergeant '55, '56, Official Bugler '55; Reminder Staff '53, '56; Wildcat Staff '51, '56; D. A. R. American History Award '55; All-State Band '55; 4-H Club '50, '51; Student Council '53.



**JOYCE SUE LEWIS**

"A poor lone woman."  
Student Council '51, '52; F. H. A. '53, '54; Band '53, '54; Annual Staff '52; Glee Club '55, '56; Cheerleader '55.

**CHARLES LUSK**

"Faint heart never won a fair lady."  
Football '53, '55; F. F. A. '54, '55.

**NEWTIE LUSK**

"Holds his nose to the grindstone."  
F. F. A. '54, '56.

**SHIRLEY MACHEN**

"Women wear the breeches."  
F. T. A. '53, '56; F. H. A. '54; Band '52, '54; Student Council '52.

**EVELYN McCLURE**

"Those eyes soft as a cloudless sky."  
Glee Club '55, '56; Girls' State '55; F. H. A. '53.







KAY McCORMICK

"Practice is the best of all instructors."  
 Band '51, '56; Beta Club '54, '56; Wildcat  
 Staff '54, '56; F. T. A. '54, '56; Glee Club  
 '56; Homecoming Queen '55.

EUGENE MIDDLETON

"An idle brain is the devils workshop."  
 F. F. A. '54, '55; Glee Club '56.

BILLY MILLER

"Men of few words are best men."  
 Band '53, '56.

EMMA GRACE MOORE

"We are such stuff that dreams are made of."  
 F. T. A. '53, '56, Treasurer '56.

ROBERT WAYNE PARKS

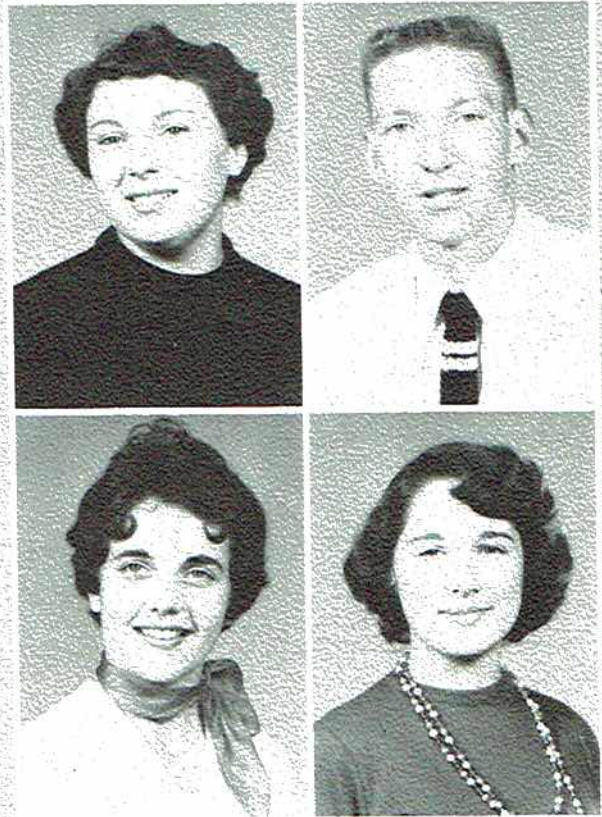
"He knows little who will tell all he knows."  
 Beta Club '54, '56, Vice-President '55;  
 Student Council '54, '55; Basketball '51,  
 '55; F. T. A. '54, '56.

FRANCES WRIGHT PAYNE

"Marriages are made in heaven."  
 F. H. A. '53, '55; Majorette '53, '56; Wildcat  
 Staff '53, '55; Secretary and Treasurer of  
 Band '56; "Miss Senior J. C. H. S." '53; "Miss  
 F. H. A. ", Alternate '53.

PATSY WEST PETTY

"Two heads are better than one."  
 F. H. A. '53, '56.



RUBY FAYE PHILLIPS

"In dreams and in love there are not  
 impossibilities."  
 F. H. A. '53, '56; Glee Club '56.

BILLY PORTER

"Better late than never."  
 F. F. A. '54, '56.

BILLY JACK PROCTOR

"Beware the fury of a patient man."  
 F. F. A. '53, '56.





**ANN RHINEHART**

"A cold hand, a warm heart."  
Glee Club '53; "Miss F. H. A.", Alternate  
'56; Cheerleader '55; F. H. A. '56; "J"  
Club '56.



**CHARLES ROBERTSON**

"Some are wise and some are otherwise."

**JIMMY RODGERS**

"Men are but children of a larger growth."  
F. F. A. '53, '56.



**MARGARET SCHULTZ**

"The only way to have a friend is to be one."  
Wildcat Staff '56; Reminder Staff '56.

**FRANCES SHARP**

"Truth is the highest thing man can keep."  
Glee Club '56; Beta Club '53, '56; F. H. A.  
'53.



**RUTH SHELTON**

"Youth is wholly experimental."  
Glee Club '56; F. H. A. '54, '55.

**WAYNE SIMS**

"His bark is worse than his bite."  
Student Council '53; Football '52, '55;  
Basketball '53; Glee Club '53, '55; Annual  
Staff '56.

**MARY ANN SMITH**

"Sing away sorrow, cast away care."  
F. H. A. '54; Glee Club '53, '56; Wildcat  
Staff '56.

**HUGH STEWART**

"He is a fool who lets slip a bird in the  
hand for a bird in the bush."  
Basketball '52, '56; All-State Basketball  
'55; Beta Club '54, '56; Wildcat Staff  
'55, '56; F. T. A. '54, '56; "J" Club '56;  
Reminder Staff '56.

**GAYLON STONE**

"Every path has a puddle."  
F. F. A. '54, '56.







S. L. STONE

"A rolling stone gathers no moss."  
 Football '53, '55; Basketball '53, '56;  
 Wildcat Staff '54, '56; F. T. A. '53, '56.

FRANKLIN TALKINGTON

"I leave my character behind me."

NINA JO WANN

"Women are wacky, women are vain,  
 they'd rather be pretty than have a  
 good brain."  
 Class Favorite '52, '53; Cheerleader '54,  
 Head Cheerleader '55; Honorary Member  
 of "J" Club '55; Wildcat Staff '52, '55;  
 Reminder Staff '56; Student Council '52;  
 F. H. A. '54; Band '52, '54.

BARBARA WATSON

"Wisdom is better than rubies."  
 Home Economics '53, '56; Annual Staff  
 '56.

BETTY WELCH

"As cold as a stone."



EUGENIA WHITAKER

"Truth is truth to the end of reckoning."

SUE YARBROUGH

"A good reputation is more valuable  
 than money."  
 Wildcat Staff '50, '51; F. H. A. '53, '54;  
 Band '52, '54; Reminder Staff '55, '56.



ROBERT YORK, JR.

"The secret of success is constancy of  
 purpose."

JOHN NIX

"A man that blushes is not quite a brute."  
 Beta Club '54, '56; Football '53, '56;  
 President of Student Council '56.

1093072





Hugh Stewart



Jo Ann Vaught



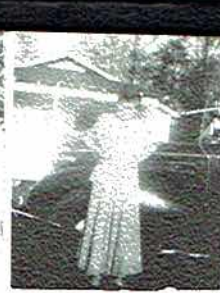
Joyce Lewis



Margaret Nell Schultz



Frances Ann Payne



Bettye Hastings



Virginia Brandon



Linda Hall



Shirley Machen



Jo Anne Kenamer



Gail James



Nina Wann



Helen Howard



Betty Chandler



Glenda Beard



Dorothy Allen



Sue Yarbrough



Kay McCormick



Susie Allen



Ruby Faye Phillips



Billy Porter



Barbara Watson



Mary Ruth Dunn



Tommie Hubbard



S. L. Stone



Patsy Petty



Ann Rhinehart



Jimmy Campbell



Evelyn Hammons



John Nix



Pat Chambers



Johnny Bolding



## *Last Will and Testament*

We, the Senior Class of Jackson County High School, Scottsboro, Alabama, being of sound bodies and questionable minds hereby solemnly declare this to be our Last Will and Testament.

To the faculty we bequeath our thanks and everlasting devotion for the patience and wisdom they have shown in trying to teach us something.

To the Senior II Class we, as a whole, leave our title of "Dignified Seniors" and our front seats in assembly, and individually will the following to them:

We, Glenda Beard, Frances Payne, and Patsy Petty, leave our book, "How to Catch a He-Male" to Genenne Allen and Geneva Sumner.

We, Jo Ann Vaught and Wayne Sims; Kay McCormick and John David Snodgrass, leave our inseperableness to Patricia Proctor and Bobby Hodges; Ann Gentle and Denny Lovell.

I, Ginger Jones, will my likable nature to Glenda Ryan.

We, Jimmy Baker, Carter Bryant, and Albert Dudley, bequeath our back seats in class to Tommy Bryant, Melton Johnson, Vaughn Hodges, Johnny Evans, Jack Brandon, Bobby Roy Rodgers, Alvin Potter, Nolan Shelton, Vann Bellomy, James Dean, and James Matthews.

We, Louis Cornelison and Tommy Chandler, leave our long and lanky "forms" to Julian Thrasher, Bernard Tanner, and Bobby Keeble.

I, Hugh Stewart, give my love for basketball to Windell Nix and Donald Moore.

I, Donald Jacobs, leave my liking for agriculture to Leon Mitchell.

We, Susie Allen, Barbara Allen, and Dorothy Allen, leave our ability to confuse the teachers to Roy McLaughlin and Ray McLaughlin; Jo Ann Wilkerson and Katherine Wilkerson.

I, Robert Skelton, give my love for younger girls to Billy Fred Word, Fowler Goodowens, Mack Finney, and Willard Latham.

I, Louise Davis, leave my jolly nature to Shirley West, Juanita McCoy, Jo Nevils, and Lois Southard.

We, Oglear Bradford and Elizabeth Bradford, bequeath our membership in F. T. A. to Jo Ann Clemons and Jane Wright.

I, Barbara Barclay, leave my love for a good time to Rebecca Johnson, Patsy Ball, and Sara Allen.

I, Linda Hall, give my love for the basketball and football teams to Carolyne Campbell.

We, Betty Jean Welch, Nina Gross, Evelyn Hammons, Ruth Shelton, and Mary Ruth Dunn, bequeath our quiet ways to Ann Sharp, Lucy Hastings, Sue Woosley, Bonnie Dolberry, Louise Webb, and Jean Eakens.

I, Johnny Bolding, leave my book on "tinkering" to Hugh Tommy Kirby.

I, Jimmy Garner, will my name to Jimmy Garner.

We, Gaylon Stone and Billy Porter, will our mischievous deeds to Perry Boykin, Autrey Gardner, Bobby Porter, and Phil Weir.

I, Ann Rhinehart, bequeath my cuteness to Sue Elliot and Glenda McGuffey.

I, Harlon Goolesby, leave my ability with the "bar-bells" to Garner Hastings and Jerry Carter.

I, Sue Yarbrough, will my neatness to Ruby Reed and Jeanette Inglis.

I, Shirley Machen, leave my athletic ability to Patricia Bryant and Marva Hall.

I, Charles Robertson, leave part of my weight to poor little Charles Necklaus.

I, Patsy Hamilton, will my title of "Little 'Un" to Ruby McCoy.



We, Floyd Crawford, Wayne Parks, Clarence Hall, Jimmy Rodgers, give our height to Billy Gordon Sanders, William Matthews, and Kendell Martin.

I, L. D. Garner, leave part of my good looks to James Cunningham, Porter Wann, and Leon Pendegrass.

I, Billy Miller, leave my trombone to Bobby Stewart.

I, S. L. Stone, bequeath my ability in all sports to Bo Davis.

I, Jo Ann Kennamer, leave my figure to Maxine Killian.

We, Emma Moore and Tommie Hubbard, bequeath our stick-to-it-tive-ness to Frances Dean and Ella Mae Westmorland.

I, Bobby York, leave my love to Karen Hodges.

We, Inez Hawkins, Joan Bellomy, and Patricia Chambers, bequeath our pretty, long hair to Louise Bellomy, Annie Potter, and Betty Jean Pritchett.

We, John Nix and Bettye Hastings, will our scholastic ability to Stanley Lusk.

I, Jimmy Campbell, leave my love for music to Brewster Bulman and Stanley Schmoller.

We, Virginia Brandon and Nina Jo Wann, bequeath our "popularity with all" to Delilah Beddingfield and Barbara Couch.

We, Mary Ann Smith, and Evelyn McClure, will our witty remarks to Margaret Jo Swaim and Martha Barbee.

I, Eugenia Whitaker, will my pretty face to Ann McCord.

We, Gail James and Billy Jean Isbell leave our love for older men to Kay Kennamer, Beatrice Treece, and Billie Grace Loyd.

We, Charles Lusk and Billy Jack Proctor, bequeath our shy but friendly smiles to Billy Ray Garner, James Bradford, Howard Anderson, and David Campbell.

I, Kenneth Jerrell, leave my heavy foot on the accelerator to Ray Gentles and Charles Hancock.

We, Joyce Lewis and Dorothy Gentles, leave our red hair to Nancy Talley and Shirley McCoy.

We, Margaret Schultz and Betty Jo Chandler, leave our ability in shorthand to Inez Keys, Opal Lackey, and Mildred Hammonds.

We, Frances Sharp, Ruby Fay Phillips, and Helen Howard, will our blond hair to Annette Arendale.

I, Barbara Watson, leave my pleasant smile to Shirley Powell, Jewel Allen, and Jane Ledbetter.

We, Newtie Lusk and Franklin Talkington, bequeath our "great muscles" to Billy Brooks, Herman Hall, C. E. Ferguson, and W. C. Roach.

WITNESSES:

Mrs. Kenneth Muse

Jo Ann Vaught

Glenda Beard

Jo Anne Kennamer (SEAL)

Linda Hall (SEAL)

In Witness Whereof, We, the Senior Class, have set our hand and seal hereto this twentieth day of January in the year of our Lord one thousand nine hundred and fifty-six (1956).





## Senior Prophecy

I have just returned from all the major cities of the world--Paris, London, New York, San Francisco, Cairo, Hong Kong, Moscow, and Scottsboro. My private plane had to be overhauled at Scottsboro so I had two days to see what had become of my classmates of 1956. I was very successful in my undertaking; my cab driver from the airport to the hotel, owned by Clarence Hall, was none other than Jimmy Baker. The radio in the cab was going full blast with L. D. Garner's "COOL TOOLS" program.

That night for entertainment I went to a variety show. The music was supplied by Johnny Bolding and his "RUBBER BAND;" Mary Ann Smith, Billie Jean Isbell, and Evelyn McClure, trio. The hilarious comedian of the show was Harlon Goolesby. Frank Talkington has found his call in life, a fine juggler.

The next day I decided to visit S. M. U. (Sand Mountain University). Dean John Nix invited me to look around. Coaching were Hugh Stewart, S. L. Stone, Wayne Sims, and Charles Lusk. Robert Skelton is attorney and trustee for the college. Jo Ann Kennamer heads the science department, Jo Ann Vaught, the English Department; Eugenia Whitaker, the mathematics; Emma Grace Moore, the History Department; Tommie Ruth Hubbard, Girl's Physical Education; Dorothy Gentles, Economics; Oglear Bradford, Democracy; and Frances Sharp, Government. While at S. M. U., I saw Shirley Machen demonstrating her famous tennis technique.

While in town I noticed The Daily Sentinel owned by Charles Robertson. Working with him as his assistant was Bettye Sue Hastings. The reporters were Elizabeth Bradford, Joan Bellomy, and Bettye Jo Chandler. In the printing room were Kenneth Jarrell, Jimmy Rodgers, Eugene Middleton, and Billy Porter.

After that I dropped in on a meeting of The Home Demonstration Club. Those present were Frances Payne, Glenda Beard, Patsy Petty, Sue Yarbrough, Virginia Brandon, Helen Howard, Ginger Jones, Joyce Lewis, Margaret Schultz, Dorothy Allen, and Barbara Barclay. Nina Wann served as Home Demonstration Agent and Gail James assistant.

I saw the famous partners, Wayne Parks and Bobby York, owners of the grocery chain stores, "ROEGERS," conferring on the last shipment of 35,000 chicken gizzards.

A friend told me that Ann Rhinehart passed her two million dollar mark last week in her clothing store "YE OLD LADIES SHOPPE."

Looking through one of the old papers I noticed that Dr. Linda Hall, pediatrician had her own clinic. Serving as nurses were Barbara Allen, Betty Jean Welch, Pat Chambers, Mary Ruth Dunn, Evelyn Hammons, and Patsy Hamilton.

Across the street I saw the Philipson Building. The name printed on the window was Lawyer John David Snodgrass. I had heard previously that he wins his cases.

As I walked down the street entering the arcade, I saw where Ruth Shelton owns a beauty shop. Serving as beauticians were Nina Gross, Ruby Phillips, Barbara Watson and Louise Davis.

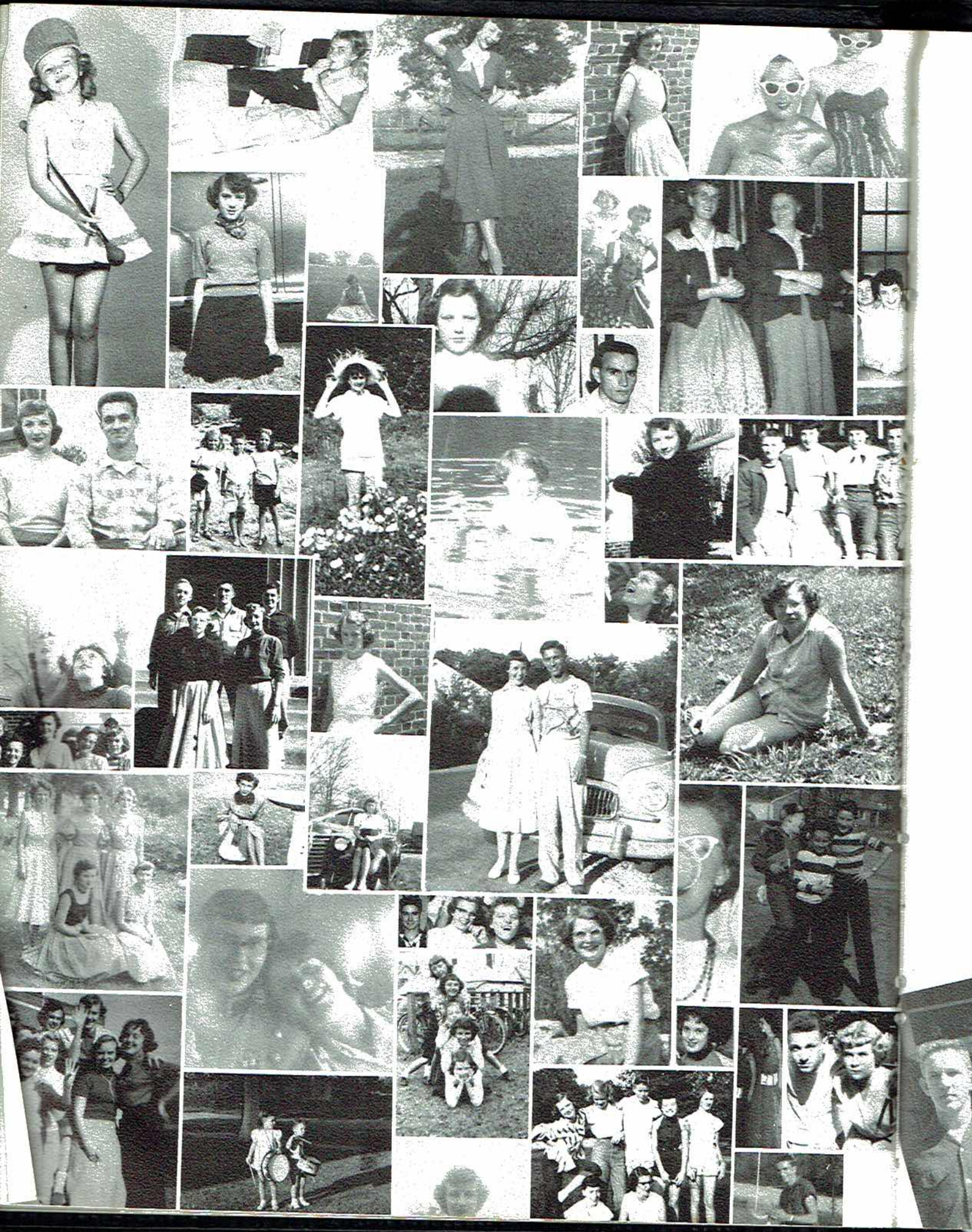
Next to the beauty shop was Billy Miller's famous barber shop. Barbers were Carter Bryant, Tommy Chandler, and Floyd Crawford. His manicurists were Inez Hawkins and Susie Allen.

Scottsboro boasts of its many cotton plantations so I took a bus out to see them. Among the rich plantations owners are Gaylon Stone, Guy Clemons, Albert Dudley, Donald Jacobs, Billy Jack Proctor, Lewis Cornelison, and Jimmy Garner.

As I have received word that my plane is again ready for take off, I will leave for my home where I will continue teaching music at Washington conservatory.

It thrilled me to renew old acquaintances of J. C. H. S.







# Juniors

Genenne Allen  
 Judy Allen  
 Sara Allen  
 Howard Anderson  
 Annette Arendale

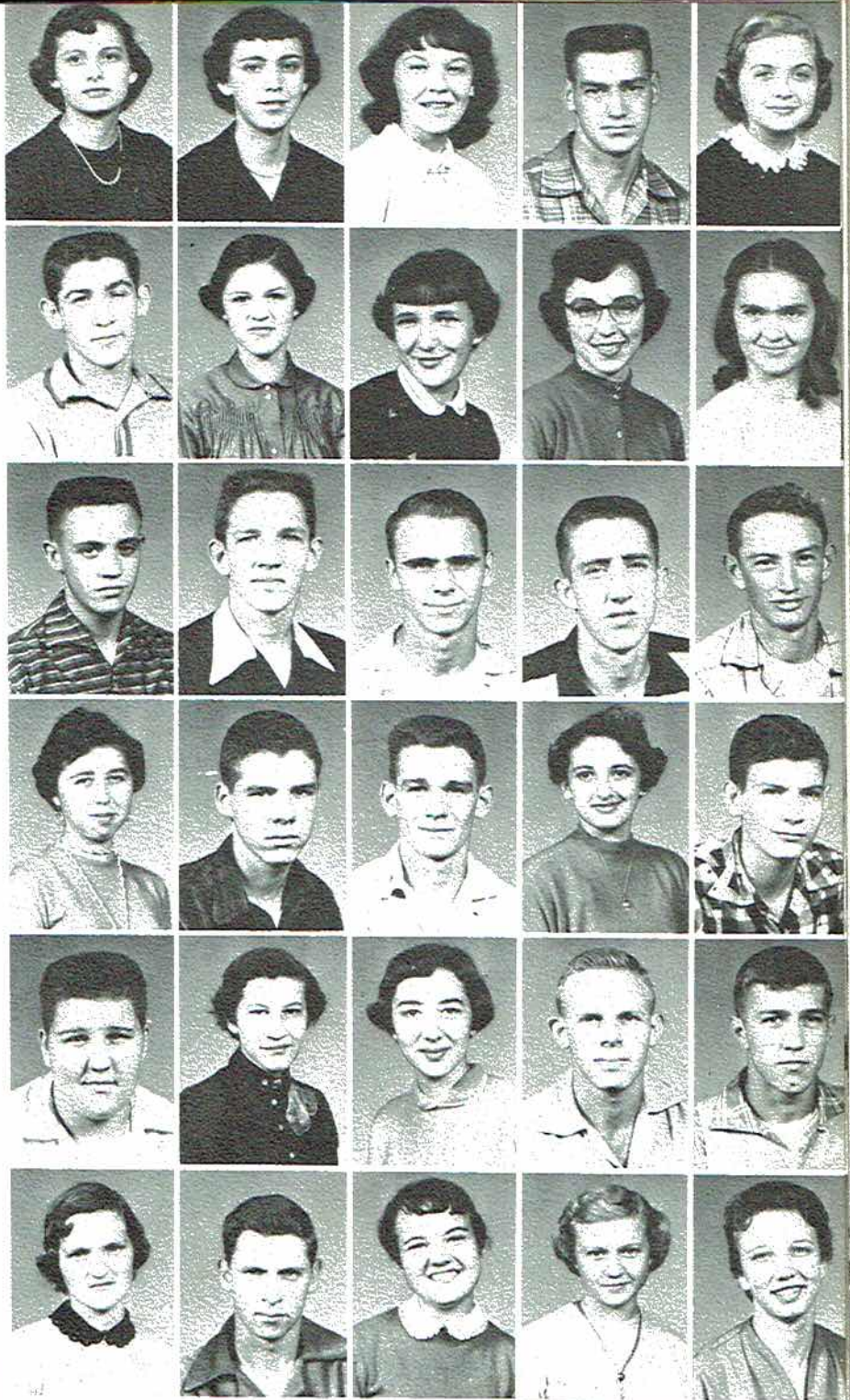
Vernon Arnold  
 Martha Barbee  
 Patsy Ball  
 Delilah Beddingfield  
 Louise Bellomy

Vann Bellomy  
 Perry Boykin  
 Robert Bradford  
 Jack Brandon  
 Billy Brooks

Patricia Bryant  
 Tommy Bryant  
 Brewster Bulman  
 Carolyne Campbell  
 David Campbell

Jerry Carter  
 Jo Ann Clemons  
 Barbara Couch  
 James Cunningham  
 Bo Davis

Frances Dean  
 James Dean  
 Bonnie Dolberry  
 Dorothy Jean Eaken  
 Sue Elliott



Johnny Evans  
 C. E. Ferguson

## CLASS OFFICERS

President. . . Bobby Hodges  
 Vice-President. Perry Boykin  
 Secretary. . . Ray Gentle  
 Treasurer . . . Karen Hodges

Mack Finney  
 Autrey Gardner







Billy Garner  
Jimmy Garner  
Ann Gentles  
Ray Gentle  
Fowler Goodownes



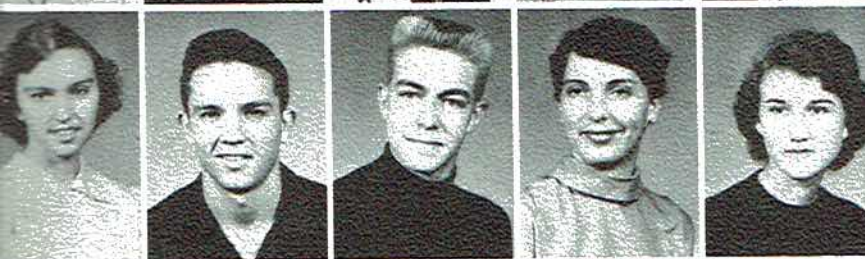
Herman Hall  
Marva Hall  
Mildred Hammons  
Garner Hastings  
Lucy Hastings



Bobby Hodges  
Karen Hodges  
Vaughn Hodges  
Jeanette Inglis  
Melton Johnson



Bobby Keeble  
Kaye Kennamer  
Inez Keys  
Maxine Killian  
Hugh Thomas Kirby



Opal Lackey  
Willard Latham  
Denny Lovell  
Jane Ledbetter  
Billie Loyd

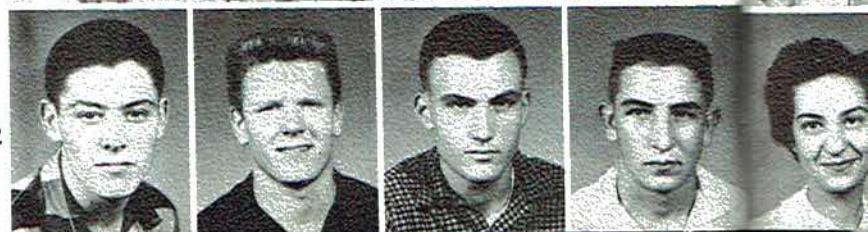


Stanley Lusk  
Kendall Martin  
James Matthews  
William Mathews  
Ann McCord

Juanita McCoy  
Ruby McCoy  
Shirley McCoy  
Glenda McGuffey



Ray McLaughlin  
Roy McLaughlin  
Leon Mitchell  
Donald Moore





Charles Necklaus  
Elizabeth Nevils  
Windell Nix  
Leon Pendergrass  
Robert Porter



Alvin Potter  
Annie Potter  
Shirley Powell  
Bettye Pritchett  
Patricia Procter



Gordon Reed  
Ruby Reed  
W. C. Roach  
Bobby Rogers  
Glenda Ryan



Billy Sanders  
Stanley Schmoller  
Ann Sharp  
Nolan Shelton  
Lois Southard



Bobby Stewart  
Geneva Sumner  
Margaret Swaim  
Bernard Tanner  
Nancy Tally



Julian Thrasher  
Beatrice Treece  
Edward Tubbs  
Porter Wann  
Louise Webb



Phil Weir  
Shirley West  
Ella Westmoreland  
Jo Ann Wilkerson



Katherine Wilkerson  
Sue Woosley  
Billy Fred Word  
Jane Wright

Camera Shy:  
Charles Hancock





Rodney Adkins  
 Mary Jane Allen  
 Tom Allen  
 Wayne Allison  
 Mary Louise Ambrester  
 Carolyn Arnold  
 Mary Jo Arnold

Christine Ashmore  
 Eulis Atkins  
 Winston Baker  
 Charley Beard  
 Jimmie Bearden  
 Betty Berry  
 Bosco Boles

*Sr. I*



Marie Bradford  
 Gail Bray  
 Helen Bryant  
 James L. Bulman  
 Elizabeth Campbell  
 Dorothy Carlisle  
 A. W. Chandler

Etta Mae Christman  
 James Cline  
 Anne Cloud  
 Christine Cosby  
 Jean Cunningham  
 Jerry Cunningham  
 J. W. Davis

Jurdy Dawson  
 Pearleen Dunn  
 Nellie G. Eaken  
 Mary Sue Evans  
 Mary Sue Farr  
 Doris Finney  
 Mary Joe Finnley

Donald Fowler  
 Catherine Gant  
 Dorothy Garner  
 Joyce Gibson  
 James Goodowens  
 Nita Grider  
 Dewey Hall

Kenneth Hall  
 Alton Hastings  
 Raymond Hendrix  
 Doyle Hethcoat  
 Joel Hodges  
 Mary C. Hodges  
 Peggy Hodges

Floyd Hooper  
 James Ivey  
 Nellie R. Judge  
 Joyce Keel  
 Marie Keith  
 Joe B. Kelsey  
 Billy Kennamer

Jimmy King  
 Daisy Kirkland  
 Bettye Ledbetter  
 Elizabeth Ledwell  
 Virginia Lemons  
 Louis Letson  
 Opal Lewis

R  
B  
F  
P  
C  
P  
J  
J  
J  
I  
C  
J  
P  
C  
B  
R  
J  
B  
M  
H  
W  
E  
S  
B  
J  
B  
L  
M  
T  
D  
M  
G  
J  
H  
B  
B  
M  
M  
B  
J  
L  
P  
J  
J  
F  
A  
F  
C  
U  
J  
C  
D  
J  
J  
V  
W  
C  
J  
J  
M  
T  
P  
R



Roma Kate Lewis  
 Beth Lusk  
 Frances Luttrell  
 Pearlean Manning  
 Charles Maynor  
 Peggy McCampbell  
 James McCullough



John Middleton  
 Juanita Muse  
 Jean Newell  
 Irene Nicklaus  
 Catherine Odum  
 John O'linger  
 Patsy Olinger

## Sr. I

Cecil O'Neal  
 Barbara Pace  
 Richard Pace  
 Jean Paradise  
 Brenda Phillips  
 Mike Poole  
 Howard Precise



W. H. Precise  
 Evelyn Roach  
 Sanford Roberts  
 Bobby Joe Rodgers  
 Jerry Rudder  
 Barbara Sampson  
 Lou Ella Selby



Margaret Sharp  
 Tommy Sisk  
 David Skelton  
 Merbil Sloan  
 Geraldine Smith  
 Janice Smith  
 Helen Stevens



Brooks Stewart  
 Bobby Stoner  
 Mildred Summer  
 Margaret Tate  
 Barbara Thomas  
 Jimmie Tidwell  
 Lonnie Tipton



Patrick Trammell  
 Joyce Treece  
 James Turner  
 Faye Vincent  
 Ann Wales  
 Fred Wallingsford  
 Charles Wann



Ula Mae Warren  
 Joyce Watson  
 Charles Webb  
 David Webb  
 James Webb  
 Jesse Webb  
 Virginia Westmoreland



W. Whitehead  
 C. Womack  
 J. Womack  
 J. Woodall  
 M. Womack  
 T. Woodall  
 P. Wright  
 R. Wright







Henry Allen  
 Clyde Bell  
 Louise Bell  
 Doris Bellomy  
 Pete Bently  
 Calvin Berry  
 Faye Bradford

Kenneth Bradford  
 Danny Brandon  
 Mary Brandon  
 Smith Brannum  
 Pat Bryant  
 Patricia Cargile  
 Ralph Carter

Bobbie S. Chandler  
 Charles Chandler  
 Jean Clemons  
 Kenneth Clemons  
 Jane Clift  
 Wayne Collins  
 Billy Cornelison

Larry Crayford  
 Edith Cunningham  
 Rachel Downey  
 Joyce Dudley  
 Charles Edge  
 William Edmonds  
 Shirley Elliot

Ella Ruth Gamble  
 Carolyn Gant  
 Eugene Gant  
 Cactus Gay  
 Wilda Ruth Geckles  
 Glenn Gentle  
 Peggy Green

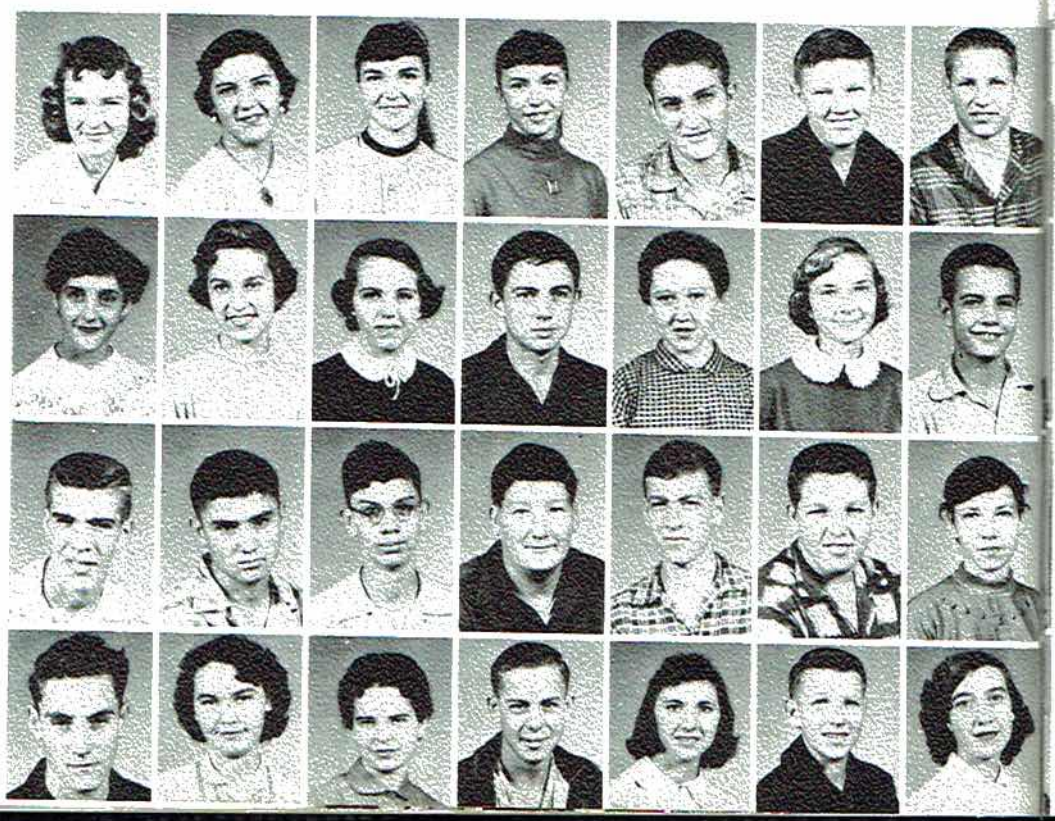
## Jr. III

Barbara Guffey  
 Bonnie Guffey  
 Mary F. Guffey  
 Nancy Guffey  
 Roy Hamer  
 Fred Hancock  
 John Hancock

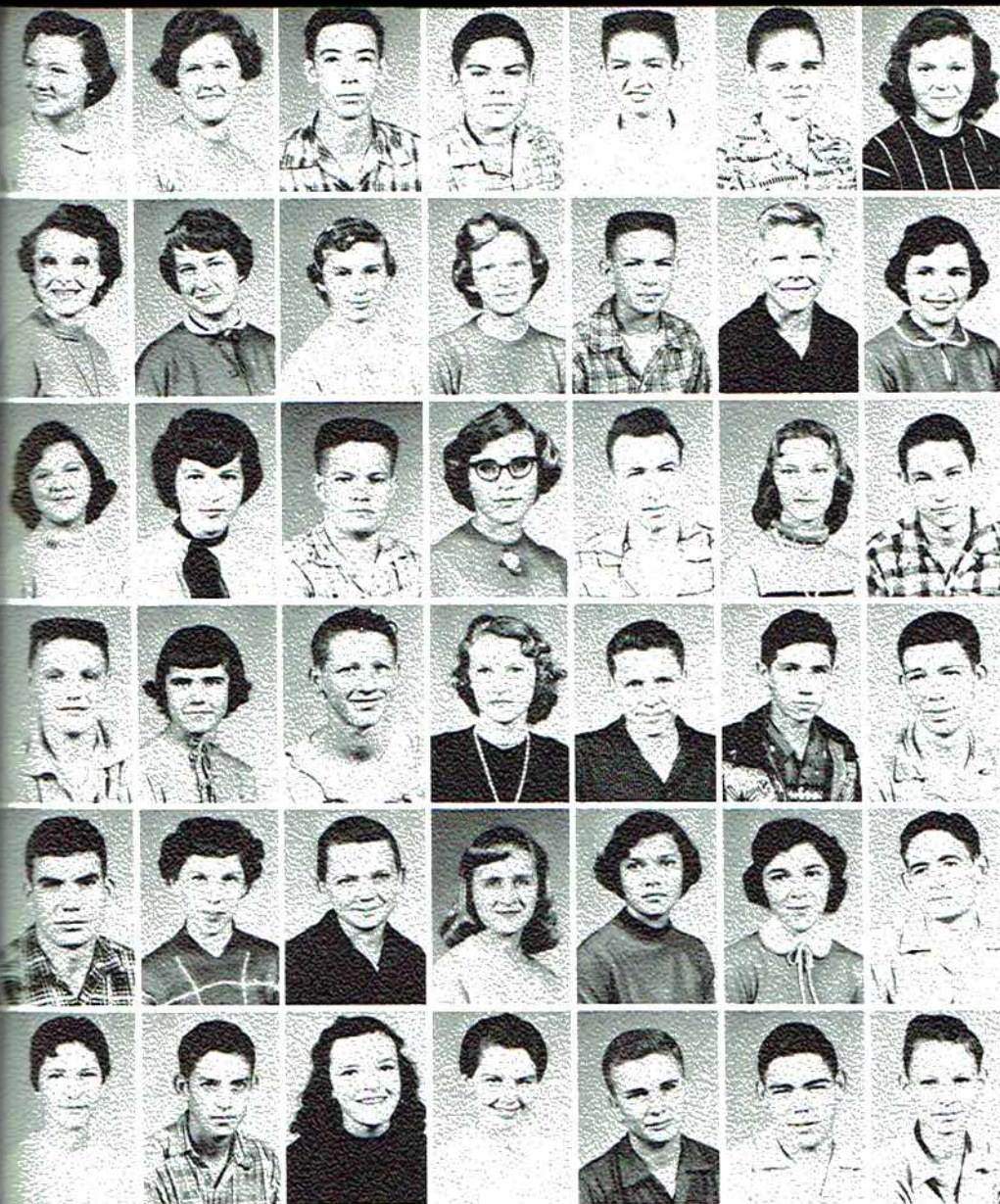
Margaret J. Hancock  
 Bonnie Harbin  
 Mavis Hart  
 Delbert Hastings  
 Ola Hawkins  
 Nancy Hess  
 Billy Hodges

Brad Howland  
 Bobby James  
 David James  
 Billy Johnson  
 Donald Jordan  
 Hugh W. Judge  
 Mary A. Judge

Floyd Keller  
 Bertha Knight  
 Betty S. Knight  
 William Knight  
 Duylene Lackey  
 Melvin Liles  
 Patsy Lusk







Reva Lusk  
 Martha J. Machen  
 Jerry Mathews  
 Roland Matthews  
 Jerry Mayner  
 William McCoy  
 Verma Mitchell

Joyce A. Murphy  
 Frances Nevils  
 Lila J. Pace  
 Carol Patterson  
 Jimmy Penny  
 Eugene Phillips  
 Hughie M. Pickles

Patricia Potter  
 Gloria Power  
 Raymond Procter  
 Carolyn Rodges  
 Walter L. Rich  
 Sarah R. Sanderson  
 Edward Selvage

Billy Shelton  
 Loretta Shelton  
 Robert Sherrill  
 Bonnie Sisco  
 Oscar Smart  
 Winston Smart  
 Jimmy Steeley

Kenneth Tally  
 Mary N. Thrasher  
 W. C. Walker  
 Ann Wallace  
 Mary E. Wallace  
 Sue Wallace  
 Fred Welch Jr.

Charlotte Wheeler  
 Oval Wilborn  
 Rosa P. Womack  
 Elizabeth Woodall  
 Bobby Sam Woosley  
 Jimmy L. Wright  
 Jimmy York



Camera Shy:  
 Robert Dean  
 Boyd Edwards  
 Jarrett Stewart  
 Steven Wilbourn

"Oh, to finish a float!"





W. S. Adams  
George Adams  
Homer Ake  
Wanda Allen  
Carl Allen  
Rayford Allen  
Sylvia Allen

Fayne Allen  
Tommy Armstrong  
Billy Arnold  
Wanda Ashmore  
Tommy Ashmore  
Bill Beard  
Mickey Bell

Wilda Bellomy  
Doyle Benefield  
Glenda Bishop  
John Blackwell  
Fred Bogue  
Elizabeth Boozer  
James Bradford

Kenneth Bradford  
Jo Ann Bradford  
Larry Brazelton  
Betty Burrow  
Junior Byrd  
Orville Campbell  
Vera Carter

Judy Clemons  
Terrel Clemens  
Dorothy Cornelison  
Joyce Cornelison  
Marvin Cornelison  
Tallulah Cunningham  
Virginia Davis

## *Jr.* II

Billy Davis  
Morris Dean  
Jerome Dean  
Glynn Derrick  
Lynn Derrick  
Eugene Dudley  
Roy Fred Durham

Ruby Edwards  
Mary Evans  
Robert Evett  
Billy Farr  
Katherine Finney  
Holland Floyd  
Brenda Fraizer

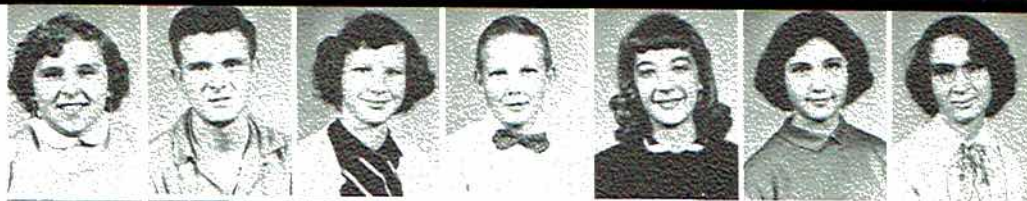
Bobby Gentle  
Jerry Gist  
Kenneth Gist  
Joyce Gist  
Phillip Green  
Walter Roy Green  
Hershell Green

Billy Zack Gross  
Bruce Guffey  
Faye Guffey  
Lee Harrington  
Bobby Haynes  
Charles Heath  
Dennis Hendrix





Ruth Ann Hill  
 Marvin Holcomb  
 Betty Holderfield  
 Glenn Holt  
 Judy Irving  
 Margaret James  
 Kay James



Berdia Jeffery  
 Mary Lou Johnston  
 Mary Judge  
 R. B. Justice  
 Hope King  
 Albert Ledwell  
 Tommy Lewis



Bobbie Ann Loyd  
 Sylvia Lusk  
 Helen Martin  
 Mary Matthews  
 Helen McClure  
 Jim McCoy  
 Roy Miller



Joe Wheeler Moore  
 Helen Morrow  
 Sandra Murrah  
 Bobbie Nelson  
 Harold Newell  
 Bose O'Linger  
 Joyce O'Tinger



Leon Precise  
 John Precise  
 Jimmie Pritchett  
 Tommy Proctor  
 Lois Pockrus  
 Edmund Potter  
 Jimmy Sampson



Joan Selvage  
 Mary Sharp  
 Jim Shavers  
 Freddie Sherrel  
 Martha Smith  
 Dorothy Southead  
 Betty Jo Steeley

Wanda Stewart  
 Wayne Swancey  
 Howard Talkington  
 Judy Thomas  
 Kenneth Thrasher  
 Carolyn Travis  
 Charles Tubbs

Leonard Venable  
 Shirley Walker  
 Paul Webb  
 Odell Whitehead  
 Roy Wilhelm  
 Glenda Wilkerson  
 Shirley Wilkerson

Billie Winger  
 Bill Wood  
 Martha Lou Woodall  
 Davis Worley  
 Marvin Wright

Camera Shy  
 Ross Davis  
 Mary Eloise Venable  
 David Weeks  
 Joyce Matthews  
 Oppalene Norman  
 Gladys Chambers







Jerry Adkins  
 John F. Armstrong  
 James Ashburn  
 James Austin  
 Betty Bailey  
 Fannie Bailey  
 Jerry Baker

Barbara Bankston  
 Joyce Beard  
 Jimmy Beason  
 Donald Beddingfield  
 Carolyn Bellomy  
 Billy Benefield  
 Buddy Berry

Carol Berry  
 Nelly Berry  
 Wanda Bogue  
 Neil Bolding  
 Barbara Brandon  
 Jo Pell Brandon  
 Maxie Brown

Tommy Brown  
 Ruth Bryant  
 Winnie Gay Bulman  
 Betty S. Busby  
 Martha Campbell  
 Alton Carter  
 Keith Carter

Celeste Chambers  
 Paula Chambers  
 Louise Clark  
 Shirley Cook  
 Jean Coplin  
 Linda Cordell  
 Paul Cornelison

## *Jr. I*

Shirley Cornelison  
 James Dayle  
 Johnny Darnell  
 Bobby Davis  
 Charles Dawson  
 Billy Derrick  
 Bob Derrick

Patsy Derrick  
 Elizabeth Dolberry  
 Wendell Dudley  
 Frances Edge  
 Bernice Edwards  
 Louise Edwards  
 Wayne Edwards

Patricia Elliott  
 Bobby Evett  
 Ralph Fowler  
 Kelly Goodownes  
 Douglas Green  
 Jackie Grider  
 Jimmy Griggs

Glenda Guffey  
 Peggy Hall  
 Tracy Hamer  
 Carolyn Hancock  
 Harry Hancock  
 Larry Hancock  
 Larry Harbin





Mary Ann Harris  
Linda Hester  
Carolyn Hodges  
Sonny Hodges  
Donna Jo Holder  
Ray Hollis  
Kathleen Holt



Bambi Howland  
Betty Irwine  
Roger Jackson  
Hershal James  
Aubrey Jeffery  
Johnny Johnson  
Ina Lou Judge



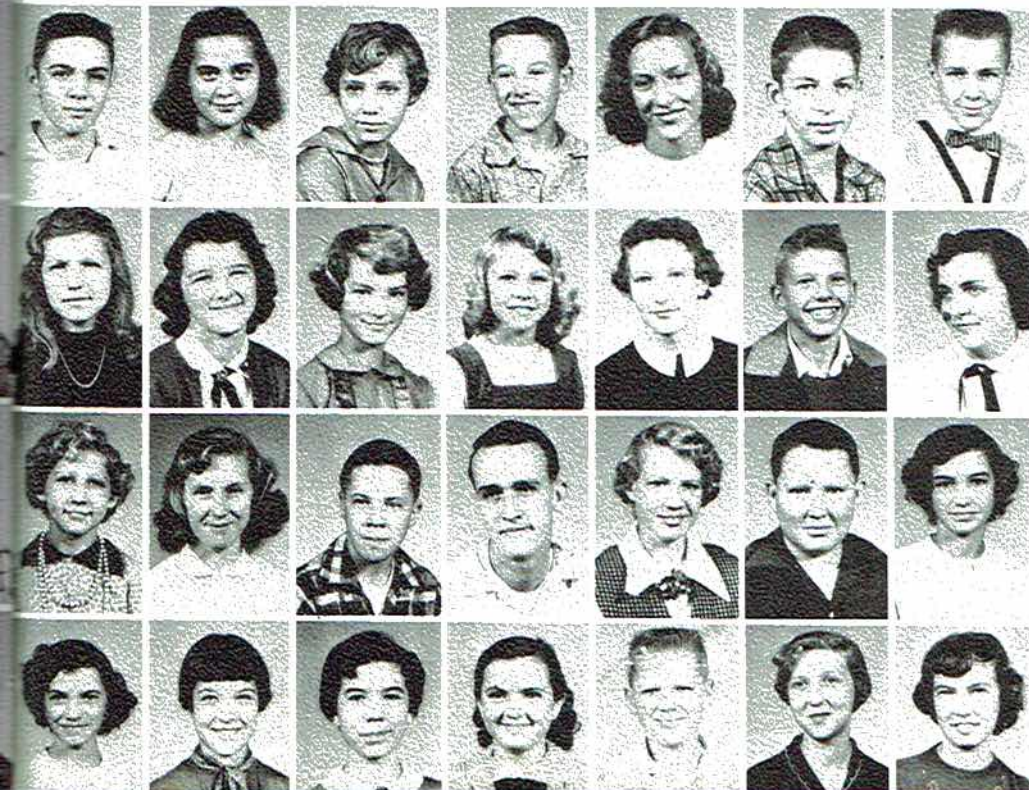
Jane Judge  
Carol Keeble  
Carolyn Keel  
Cathryn Keel  
Jimmy Kent  
Kathy Kerr  
R. C. King



Billie Ledbetter  
James Ledbetter  
Shelby Lee  
John Little  
Wilma Lusk  
Buddy Lusk  
Yvonne Lusk



Joyce Luttrell  
James Manning  
Stanley Manning  
Rosalie Maples  
Jackie Martin  
Herman McIntire  
Vincent McClendon



Shiles McCord  
Beatrice McIntire  
Mary Melton  
Charles Miller  
Mary Mitchell  
Elliot Monroe  
Larry Nevils

Betty Olinger  
Brenda Perry  
Addie Phillips  
Louise Phillips  
Wanda Phillips  
William Phillips  
Audrey Pockrus

Alice Poland  
Carolyn Potter  
Vester Potter  
James Presley  
Ruby Lee Proctor  
Samuel Proctor  
Juanita Putman

Patty Putman  
Carolyn Roach  
Nance Robinson  
Sarah Roden  
Ronald Rogers  
Charlotte Rudder  
Sandra Rudder





Billy Earl Schultz  
 Rayburn Selvae  
 Billie Ann Sebring  
 Doris Shelton  
 Julian Shelton  
 Linda Nell Shelton  
 Mary Elizabeth Shelton

Elizabeth Shofner  
 Melba Sloan  
 Carolyn Smith  
 Reba Smith  
 Ruth Smith  
 Bobby Southerland  
 Larry Stewart

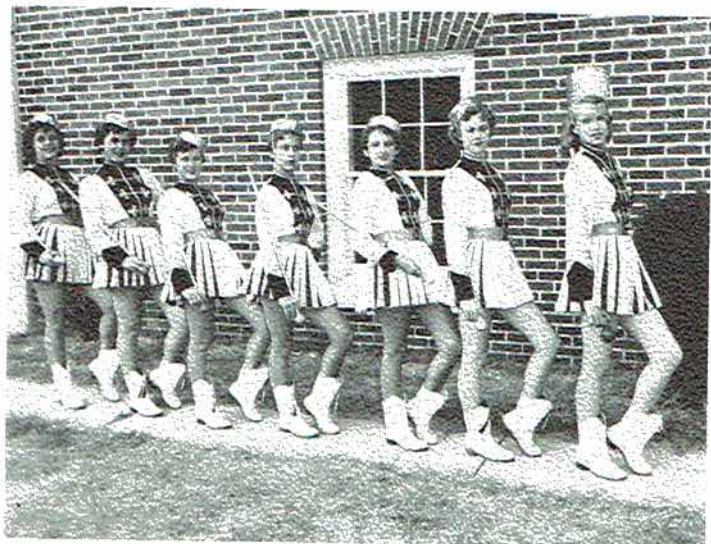
Sonny Stewart  
 Bobby Summerfield  
 John Tally  
 Jerry Taylor  
 Lois Ann Thomas  
 Don Trammell  
 Phyllis Tubbs

John Upton  
 Linda Lee Vaught  
 Charles Wallingsford  
 George Ward  
 Betty Watson  
 James Westmorland  
 Charles Whitehead

Martha Whitehead  
 R. B. Williams  
 Melba Jane Wilkerson  
 Julia Wilkerson  
 Elaine Wilson  
 J. W. Winiger  
 Tommie Ann Womack

Samuel Woosley  
 Jerry Wynn

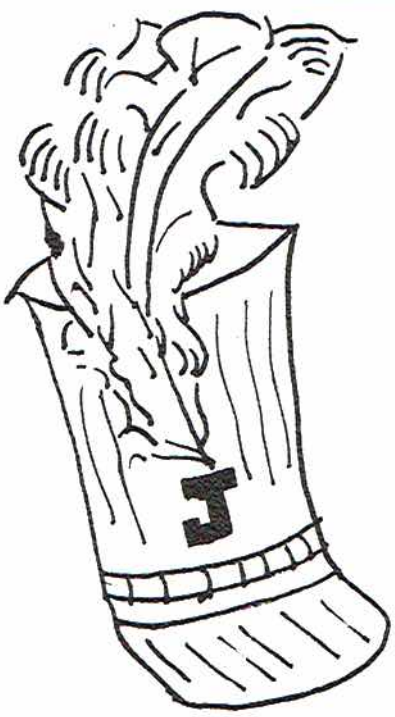
Camera Shy  
 Reba Lee Norman  
 Mary Helen Potter  
 Roy Lee Adkins  
 Dale Click  
 Calvin Jacobs  
 Houston Lee



J. C. H. S. MAJORETTES

Left to right: Frances Payne, Patricia Proctor, Glenda Bishop, Bonnie Harbin, Carolyne Campbell, Ann Cloud, and Virginia Brandon.





# Activities



Stewart





MEMBERS:

W. S. Adams, Clyde Bell, Jimmy Campbell, Barbara Couch,  
 Glyn Derrick, Charles Edge, Linda Hall, Larry Harbin, Garner  
 Hastings, Billy Hodges, Carol Keeble, Peggy McCampbell,  
 Elliot Monroe, Pete Newell, David Skelton, Robert Skelton,  
 Jo Ann Vaught, Melba Wilkerson.

*Student  
 Council*



President . . . . . John Nix  
 Vice-President . . . Bobby Hodges  
 Secretary-Treasurer . Pat Trammell





## Beta Club

### MEMBERS:

Virginia Brandon, Jimmy Campbell, Barbara Couch,  
 Autrey Gardner, Linda Hall, Karen Hodges, Helen Howard,  
 Tommie Ruth Hubbard, Gail James, Jo Anne Kennamer,  
 Kay McCormick, John Nix, Wayne Parks, Frances Sharp,  
 Robert Skelton, Hugh Stewart, Jo Ann Vaught.



President . . . . Robert Skelton





FIRST YEAR MEMBERS

M. Allen, C. Arnold, M. Bradford, J. Bearden, G. Bray, H. Bryant, D. Carlisle, C. Cosby, E. Christman, P. Dunn, J. Dawson, N. Eakin, M. Farr, M. Fendley, C. Gant, D. Garner, J. Gibson, N. Grider, M. Hall, J. Judge, M. Keith, D. Kirkland, V. Lemon, F. Luttrell, P. Manning, P. McCampbell, J. Muse, I. Necklaus, J. Newell, J. Paradise, E. Roach, B. Sampson, G. Smith, J. Smith, M. Sharp, H. Stephen, M. Sumner, B. Thomas, J. Treece, F. Vincent, J. Watson, L. Webb, C. Womack, E. Warren, M. Womack.

President  
Kathryn Wilkerson



Vice-President  
Sue Woosley



Parliamentarian  
Beatrice Treece



Reporter  
Ann McCord



*F. H. A.*

SECOND YEAR MEMBERS

J. Allen, P. Ball, G. Beard, V. Brandon, M. Barbee, D. Beddingfield, C. Campbell, F. Dean, D. Eakin, B. Isbell, J. Ledbetter, A. McCord, S. Powell, G. McGuffey, A. Potter, C. Selvage, A. Rhinehart, B. Treece, B. Watson, P. Petty, F. Payne, K. Wilkerson, S. Woosley, J. Wilkerson, S. McCoy, S. West, G. Ryan.



Sponsor  
Mrs. Turner



Secretary  
Virginia  
Brandon



Treasurer  
Glenda  
Beard







F. F. A.



MEMBERS

E. Adkins, R. Adkins, J. Baker, J. Brandon, V. Bellomy, B. Brooks, C. Bryant, T. Bryant, T. Chandler, G. Clemons, J. Cline, L. Cornelison, J. Dean, A. Dudley, J. Evans, B. Garner, J. Garner, C. Hall, C. Hancock, V. Hodges, L. Hollis, K. Holt, J. Ivey, D. Jacobs, M. Johnson, J. Keys, J. Lewis, N. Lusk, K. Martin, C. Maynor, H. Mathews, W. Mathews, J. McCulluch, J. D. Middleton, L. Mitchell, D. Moore, J. O'Linger, C. O'Neal, Richard Pace, B. Porter, W. H. Precise, B. J. Proctor, W. C. Roach, J. Rodgers, F. Roberts, J. Rudder, B. Sanders, N. Shelton, G. Stone, S. L. Stone, B. Tanner, J. A. Webb, J. T. Webb, W. Whitehead.



F. F. A. CONVENTION  
DELEGATES  
Donald Jacobs, Mr.  
Phillips, Billy Porter.



OFFICERS

President . . . . Billy Porter  
Vice-President . Lewis Cornelison  
Secretary . . . . Albert Dudley  
Treasurer . . . . S. L. Stone  
Reporter. . . . Donald Jacobs





Members: Elizabeth Bradford, Oglear Bradford, Barbara Couch, Linda Hall, Patsy Hamilton, Karen Hodges, Tommie Ruth Hubbard, Kaye Kennamer, Shirley Machen, Kay McCormick, Glenda McGuffey, Emma Moore, Wayne Parks, Hugh Stewart, Jo Ann Vaught, Jane Wright, Gayle Bray, Catherine Gant, Joyce Gibson, Helen Bryant, Evelyn Roach, Mary Louise Ambrester, Delilah Beddingfield, James Loyd Bulman, Jo Ann Clemons, Nellie Ruth Judge, Barbara Pace, Patricia Proctor, Nancy Talley, Margaret Tate, Ella Mae Westmoreland, Christine Womack, Mack Finney.

## F. F. A.



Sponsors: Miss Cora Micheals



Miss Lilly Porter

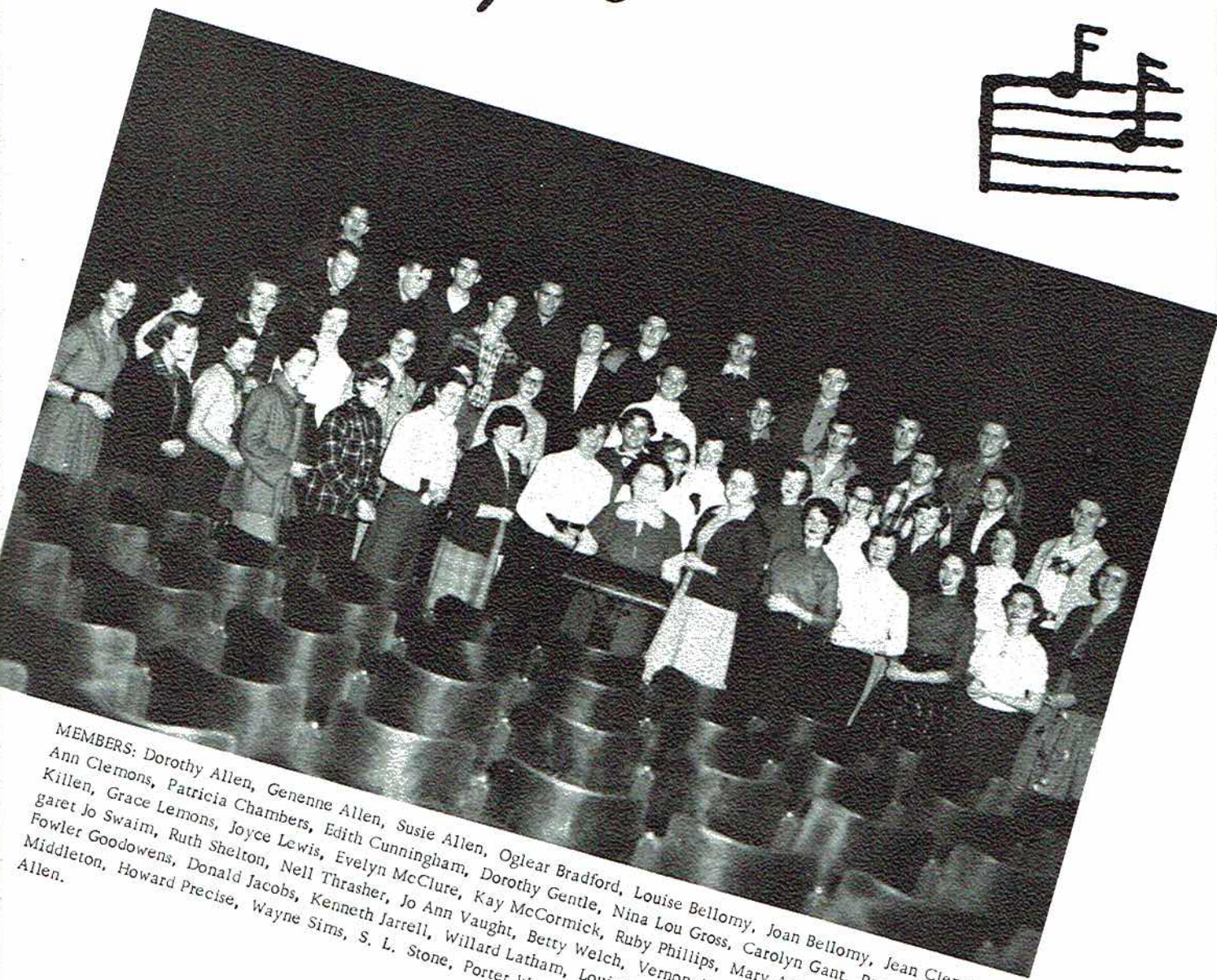
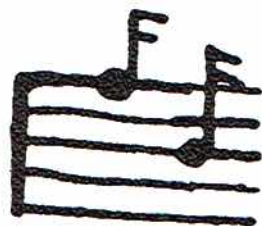


### OFFICERS

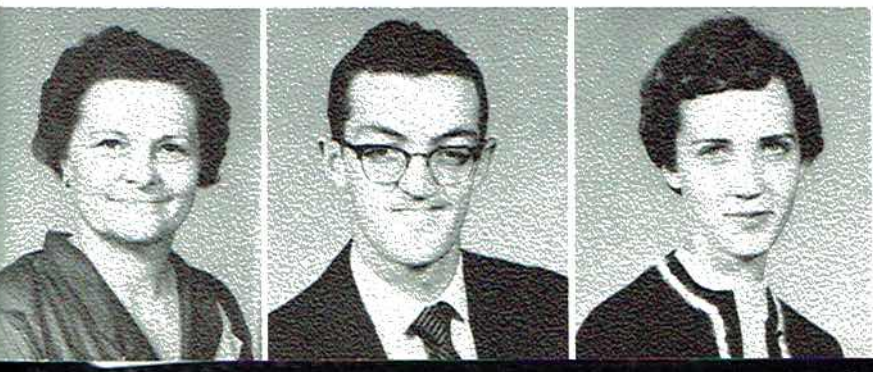
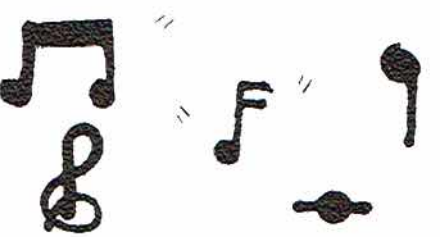
- Linda Hall . . . President
- Hugh Stewart . Vice President
- Karen Hodges . . Secretary
- Emma Moore . . Treasurer
- Barbara Couch. . Historian



# Glee Club



MEMBERS: Dorothy Allen, Genenne Allen, Susie Allen, Oglear Bradford, Louise Bellomy, Joan Bellomy, Jean Clemons, Jo Ann Clemons, Patricia Chambers, Edith Cunningham, Dorothy Gentle, Nina Lou Gross, Carolyn Gant, Peggy Hodge, Maxine Killen, Grace Lemons, Joyce Lewis, Evelyn McClure, Kay McCormick, Ruby Phillips, Mary Ann Smith, Frances Sharp, Margaret Jo Swaim, Ruth Shelton, Nell Thrasher, Jo Ann Vaught, Betty Welch, Vernon Arnold, Brewster Bulman, Jimmy Campbell, Fowler Goodowens, Donald Jacobs, Kenneth Jarrell, Willard Latham, Louis Letson, Jerry Matthews, Ray McLaughlin, Eugene Middleton, Howard Precise, Wayne Sims, S. L. Stone, Porter Wann, Billy Fred Word, Preston Wright, Johnny Woodall, Thomas Allen.

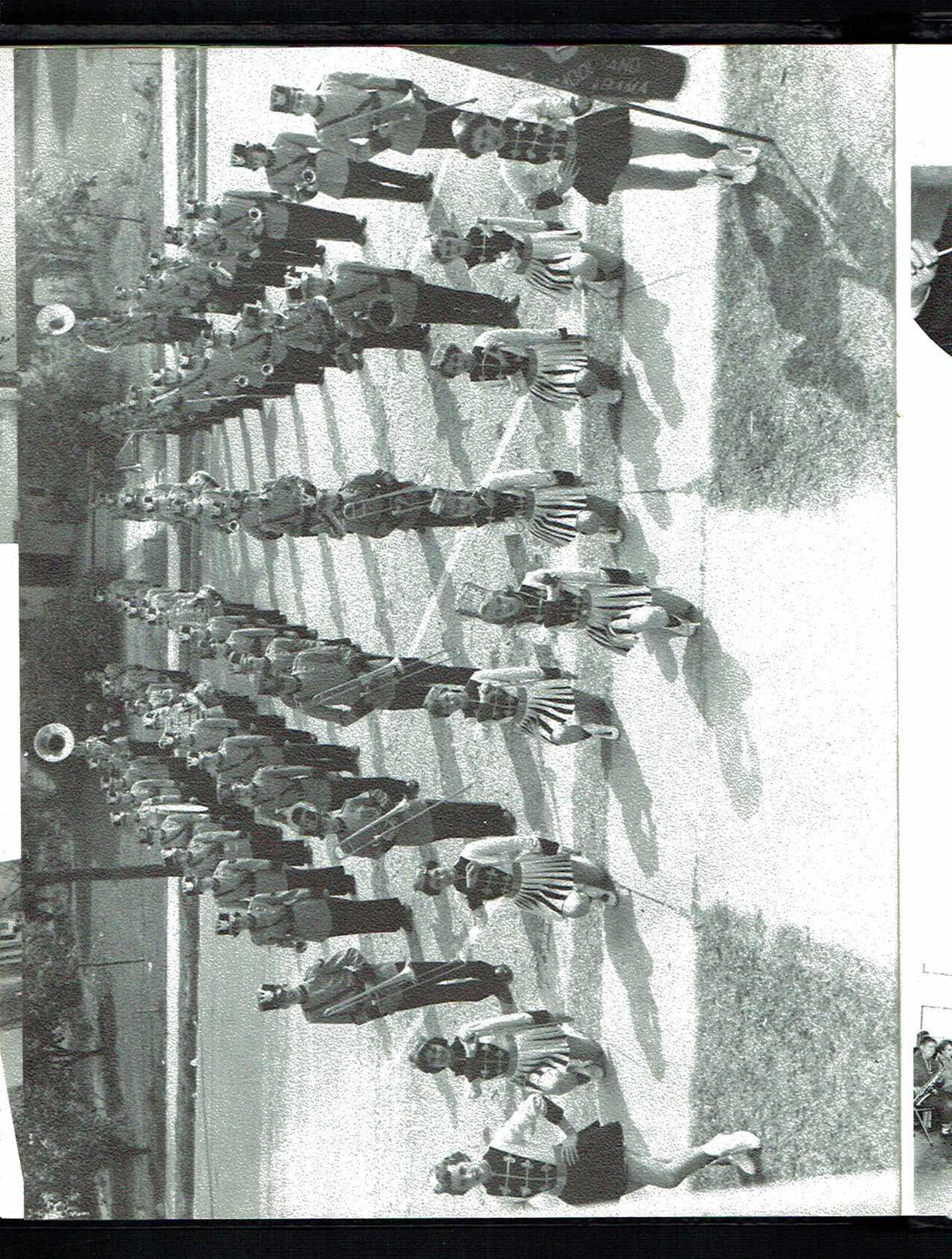


Sponsor  
Mrs. F. Hodges

President  
Kenneth Jerrell

Accompanist  
Kay McCormick









George Baker,  
Director

Autrey Gardner,  
President

Margaret Swaim,  
Vice President

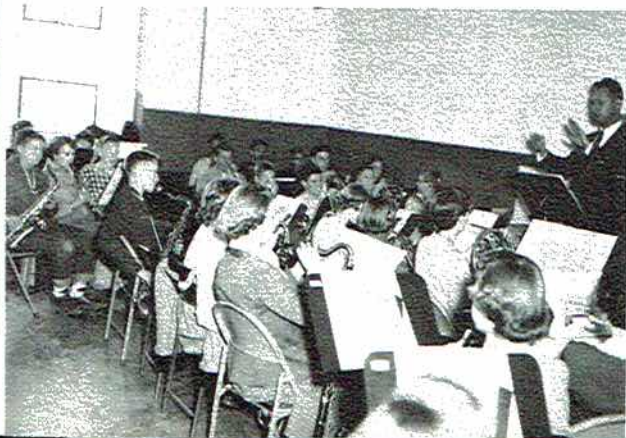
Stanley Schmoller,  
Secretary



MEMBERS: John Frank Armstrong, Tommy Armstrong, Mary Louise Ambrester, Annette Arendale, Barbara Bankston, Glenda Bishop, Tommy Brown, Joyce Beard, James Bulman, Johnny Bolding, Mary Jo Arnold, Larry Brazelton, Martha Campbell, Shirley Cook, Ann Cloud, Carlyne Campbell, Vera Carter, Celeste Chambers, Patricia Cargile, Barbara Couch, Kenneth Clemons, Charlie Ed Beard, Ross Davis, Patsy Derrick, Billy Derrick, Mary Sue Evans, Frances Edge, William Edmonds, Brenda Frazier, Cactus Gay, Autrey Gardner, Karen Hodges, Linda Hall, Walter Roy Green, Mary Ann Harris, Charles Heath, Bonnie Harbin, Mary Charles Hodges, Virginia Brandon, Nancy Hess, Brad Howland, Joe Heathcoat, Bettye Hastings, Alton Hastings, Joel Hodges, Jo Anne Kenamer, Sonny Hodges, Betty Jane Irvine, Beth Lusk, Tommy Lewis, Bobby Keeble, Kay McCormick, Rosalie Maples, Elliott Monroe, Billy Miller, Patsy O'Linger, Larry Harbin, Patricia Proctor, Wanda Phillips, Lila Pace, Gloria Powers, Sandra Rudder, Carolyn Roach, Ronald Rodgers, Margaret Jo Swaim, Stanley Schmoller, Bobby Stewart, John Tally, Jo Ann Vaught, Martha Woodall, Ann Wallace, Ann Wales, Davis Worley, Charles Billy Wann, Fred Wallingsford, Brewster Bulman.

## *Jackson County High's*

# *"Little Million Dollar Band"*



"Little Million  
Dollar Band" at  
work

Virginia Brandon,  
Head Majorette







# THE WILDCAT

PUBLISHED BY JACKSON COUNTY HIGH SCHOOL STUDENTS  
SCOTTSBORO, ALABAMA

## THE WILDCAT STAFF

Editor-in-Chief ..... Jo Ann Vaught  
 Associate Editors ..... Patricia Proctor, Barbara Couch  
 Business Managers ..... Jimmy Campbell, Robert Skelton  
 Sports Editors ..... Hugh Stewart, Pat Trammell, Bobby Hodges  
 Reporters ..... Peggy Hodge, Ann McCord, Kay McCormick, Bettye Hastings, Carolyn Campbell, Lewis Letson, Nancy Tally, Linda Hall, John David Snodgrass, Nina Jo Wann, "Cactus" Gay, Tommy Armstrong, Ann Cloud, Kaye Kennamer, Beth Lusk, Mary Louise Ambrester.  
 Features ..... Jo Anne Kennamer, Karen Hodges, Martha Barbee  
 Typists ..... Margaret Schultz, Betty Jo Chandler, Ginger Jones, Frances Payne.  
 Exchange Editor ..... Helen Howard  
 Topography ..... Margaret Jo Swalm  
 Advisor ..... Mrs. Kenneth Muse





# Reminder Staff



Editor-in-Chief--Linda Hall

Business Manager--John David Snodgrass

Class Editors--Glenda Beard, Jo Ann Vaught, Karen Hodges, Barbara Couch, Bettye Jo Chandler, Genenne Allen, Annette Arendale, Kay Kennamer, Margaret Schultz, Sue Yarbrough, Ginger Jones, Helen Howard.

Sports Editors--Robert Skelton, Perry Boykin, Bo Davis.

Club and Feature Editors--Jo Ann Kennamer, Peggy Hodges, Ann McCord.

Snapshot Editors--Patricia Proctor, Carolyn Campbell.

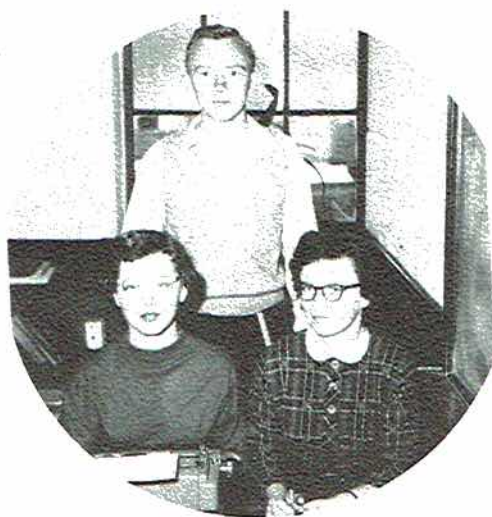
Art Editors--Hugh Stewart, Dorothy Gentles

Assistant Business Manager--Bobby Hodges

Sales Manager--Wayne Sims

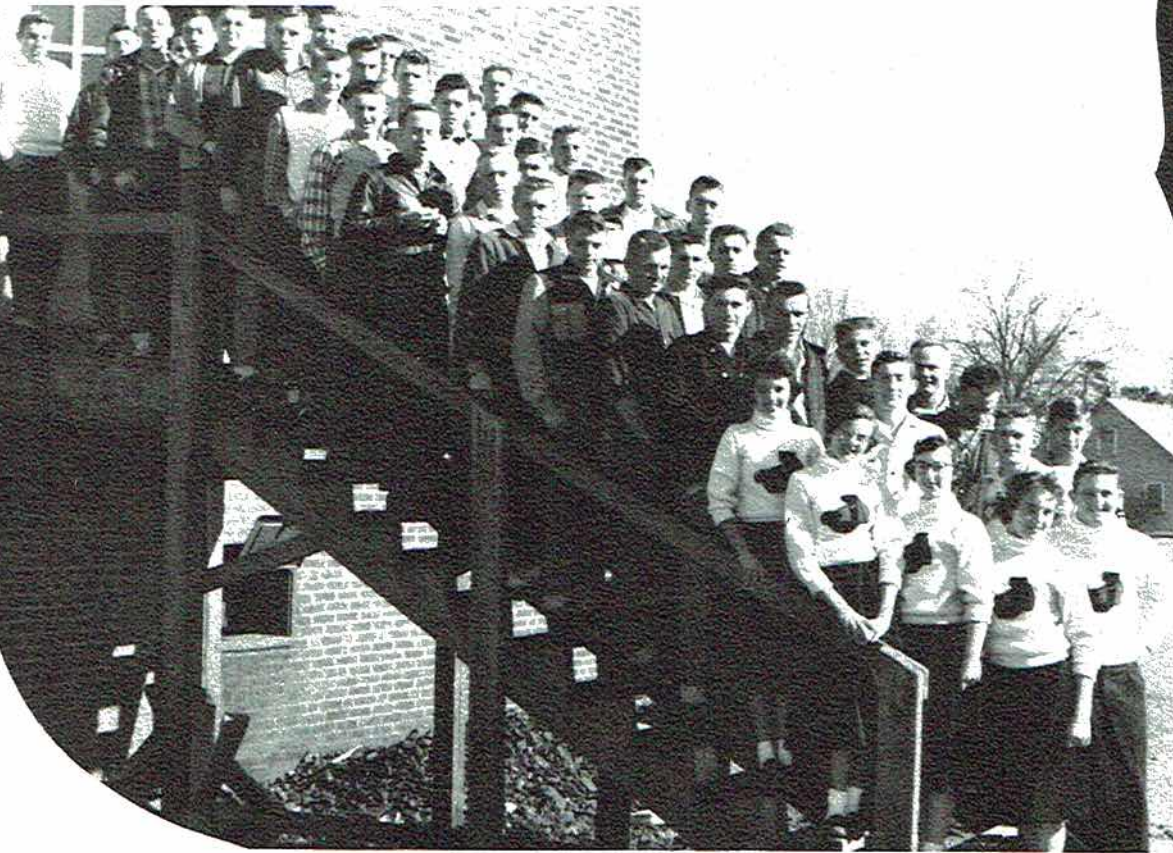
Assistants--Beth Lusk, Evelyn Hammonds, Tommie Ruth Hubbarb, Bettye Hastings, Susie Allen, Barbara Watson, Martha Barbee, Delilah Beddingfield

Sponsor--Mrs. Kenneth Muse





# "J" Club



Sponsors

W. D. Cornelius

Q. K. Carter

## MEMBERS:

Vernon Arnold, Howard Anderson, George Boles, Perry Boykin, Brewster Bulman, Jimmy Campbell, Jerry Cunningham, Bobby Davis, Fowler Goodowens, Ray Gentles, Bobby Hodges, Raymond Hendrix, Garner Hastings, Melton Johnson, Charles Lusk, Willard Latham, William Matthews, Ray McLaughlin, Roy McLaughlin, John Nix, John O'Linger, Bose O'Linger, Howard Precise, Bobby Rogers, Wayne Sims, Robert Skelton, S. L. Stone, Pat Trammell, Edward Tubbs, Charles Webb, David Webb, Wendell Whitehead, Jimmy Lee Wright, Preston Wright, Johnny Woodall, David Skelton, Charles Edd Beard, James Turner, Floyd Hooper, Jerry Rudder, Donald Jacobs, Donald Moore, Hugh Stewart, Jack Brandon, Denny Lovell, Windell Nix, Billy Gordon Sanders.

CHEERLEADERS: Nina Jo Wann, Joyce Lewis, Ann Rhinehart, Louis Letson, Deliah Beddingfield, Ann McCord.





Librarian:  
Mrs. M. G. Couch

LEFT TO RIGHT: Juanita Muse, Elizabeth Woodall, Bobbie Sue Chandler, Ella Mae Westmoreland, Judy Allen, Reva Lusk, Frances Sharp.

## *Librarians*



## *Lunchroom Workers*

Mrs. Berith Keith  
Mrs. Grace Hamlet, Manager  
Mrs. Gordon Dawson



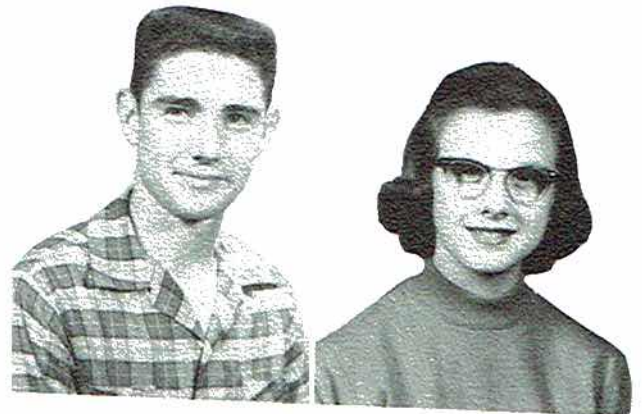
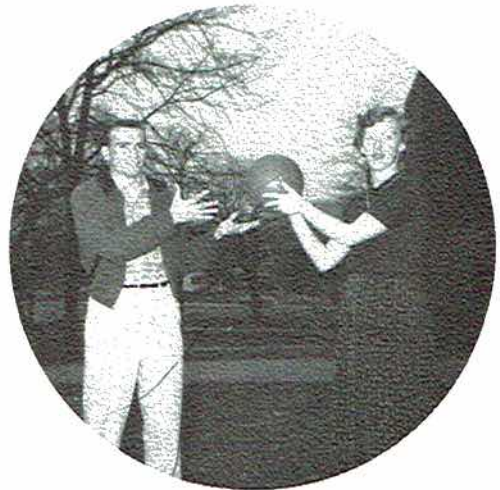


Jo Anne Kennamer  
John David Snodgrass



*Most Athletic*

Shirley Machen  
S. L. Stone



*Cutest*  
Ann Rhinehart  
Hugh Stewart





*Wittiest*

Mary Ann Smith  
Kenneth Jarrell



*Most Versatile*

Nina Jo Wann  
Jimmy Campbell



*Neatest*

Jo Ann Vaught  
Wayne Sims



W  
H  
O  
'  
S  
  
W  
H  
O



W  
H  
O  
'  
S  
  
W  
H  
O



*Friendliest*

Evelyn McClure  
Jimmy Campbell



*Teachers' Pet*

Linda Hall  
Robert Skelton



*Most Popular*

Virginia Brandon  
S. L. Stone





# Winners 1956

Mary Louise Ambrester  
Miss Senior Camp Jackson

Glenda Bishop  
Miss Junior Camp Jackson



Tommie  
Ruth  
Hubbard  
  
Good  
Citizenship  
Girl



Virginia  
Brandon  
Miss  
F. H. A.

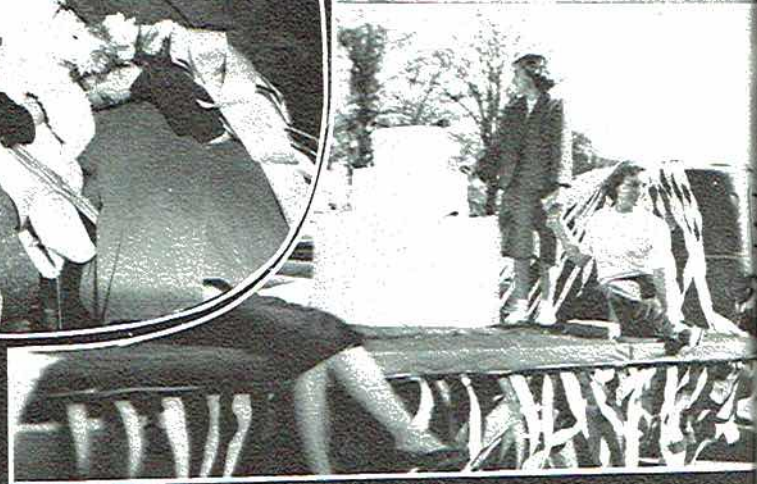
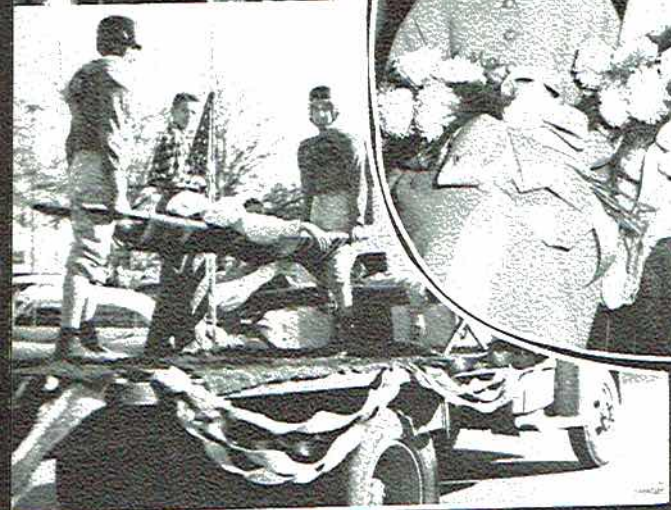
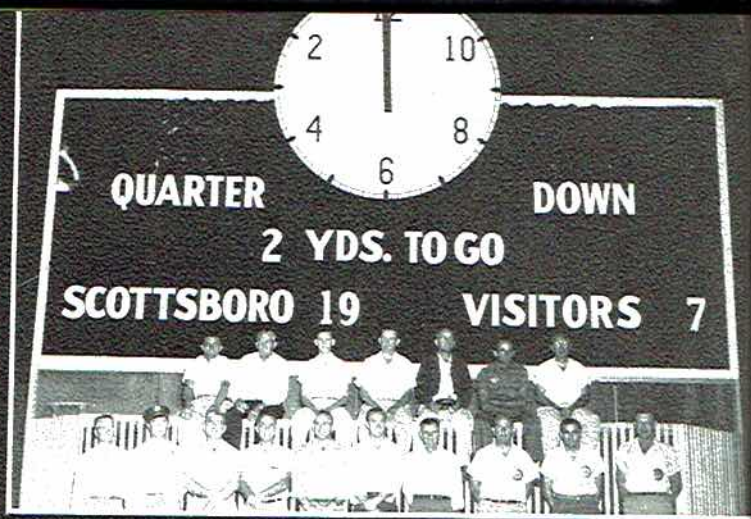


Frances Ann Payne  
Betty Crocker  
Homemaker of Tomorrow

Ginger Jones Birmingham  
News Oratorical









# Homecoming 1955



QUEEN: Virginia Brandon



LEFT TO RIGHT: Ann McCord, Jimmy Campbell, Virginia Brandon, John Nix, Patricia Proctor, Robert Skelton, Mr. M.G. Couch,



.... The Parade



Patricia Proctor

## ATTENDANTS



Ann McCord



# Cheerleaders



Mrs. William T.  
Sloan  
Sponsor



Lewis Letson



Nina Jo Wann  
Head Cheerleader



Joyce Lewis

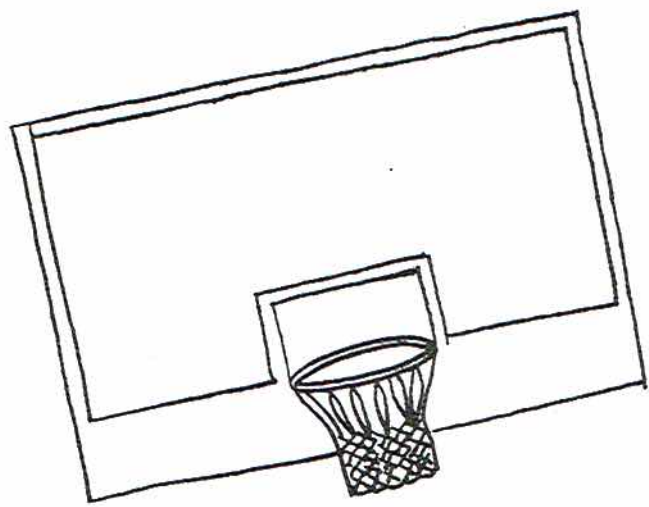
Ann Rhinehart

Delilah Beddingfield

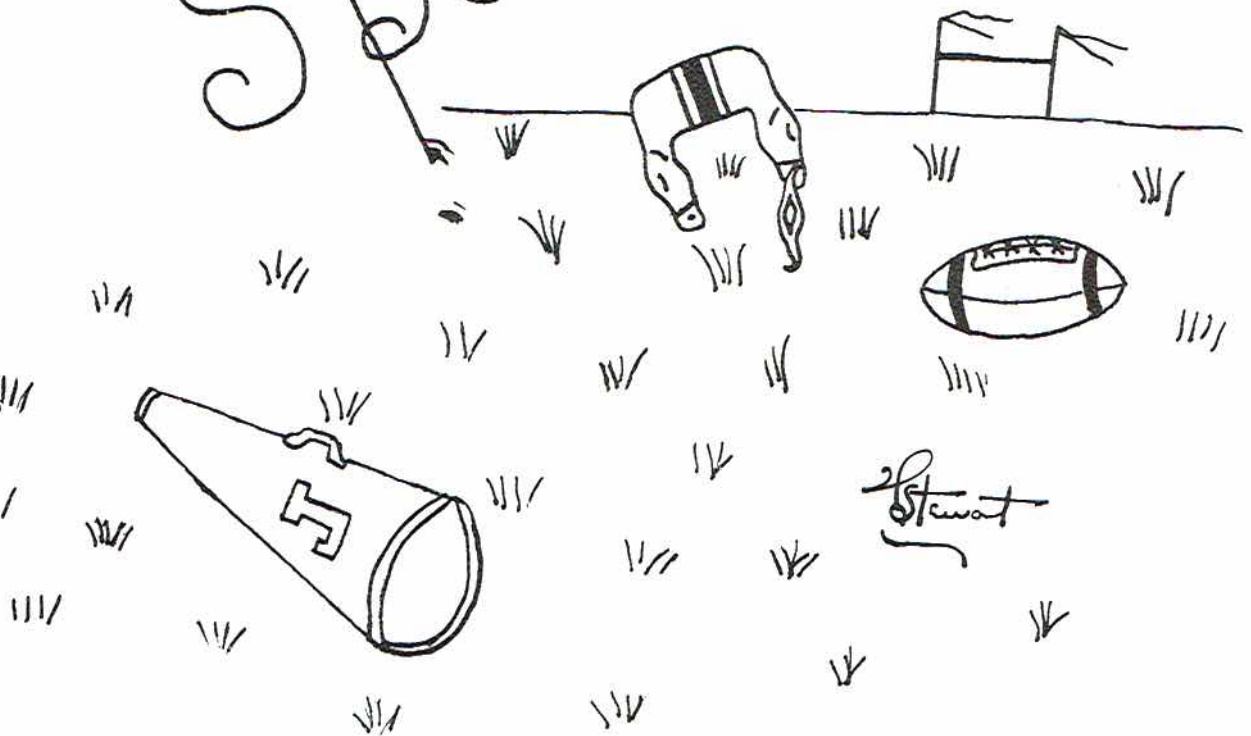
Ann McCord



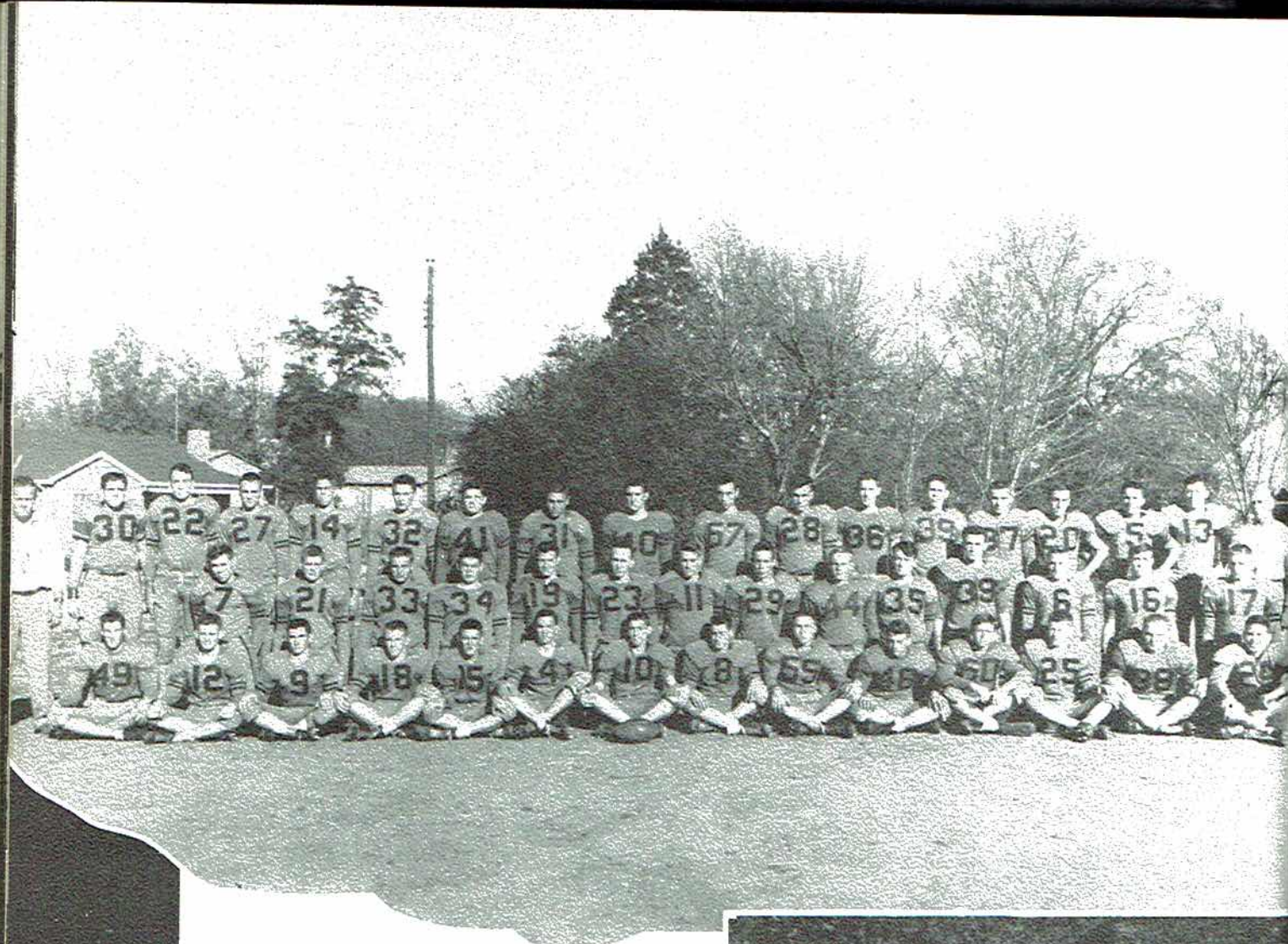




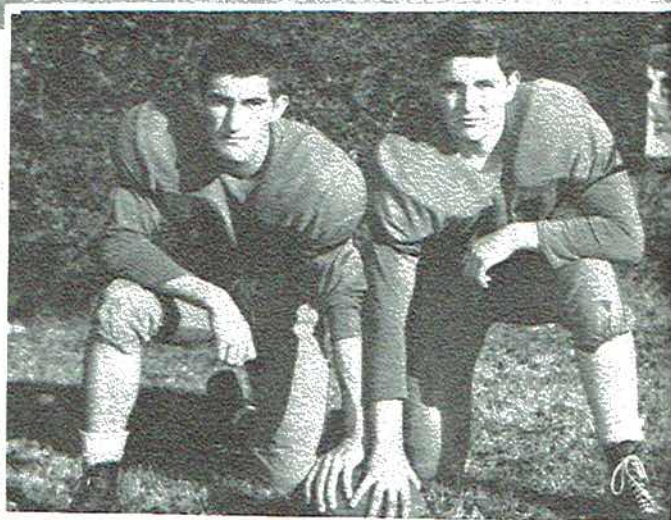
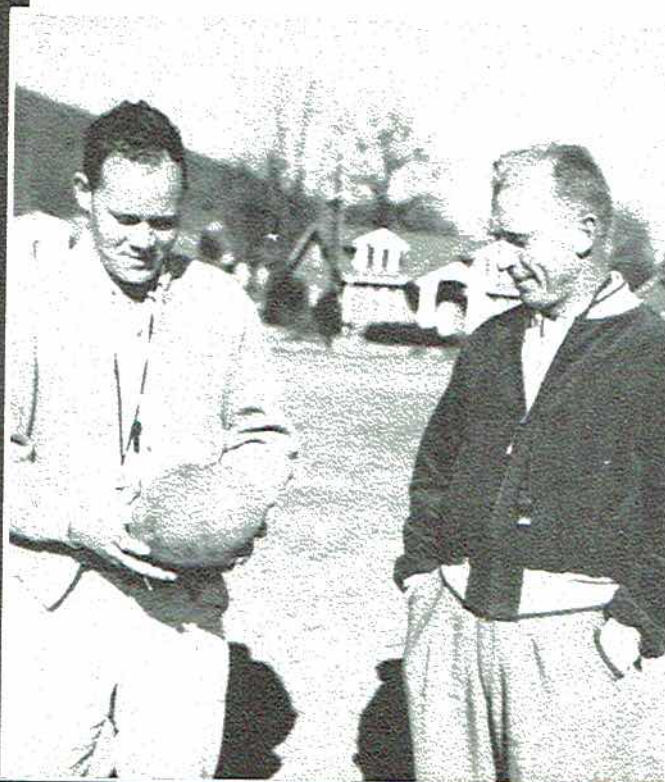
# Sports







FOOTBALL



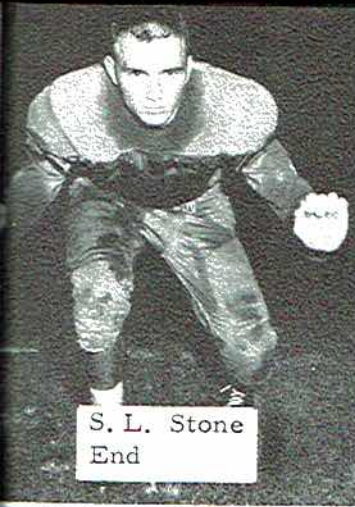
Co-Captains

Robert Skelton-Jimmy Campbell

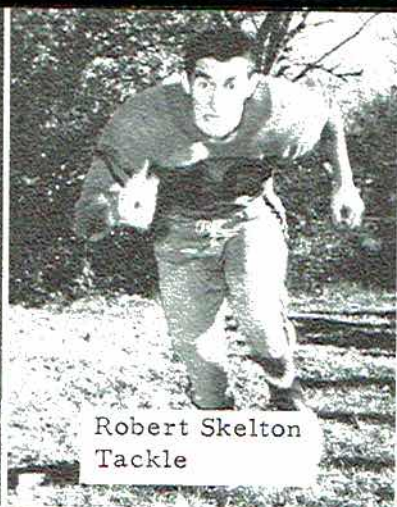
Coaches

Jack Cornelius-Q. K. Carter

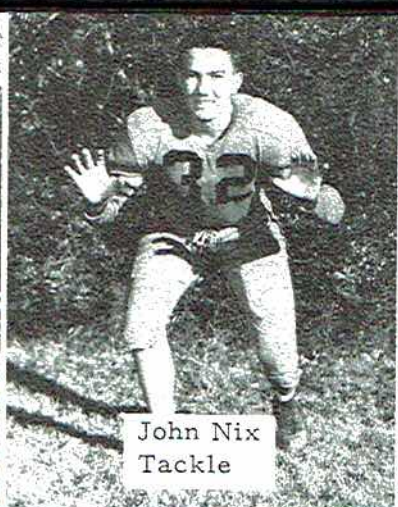




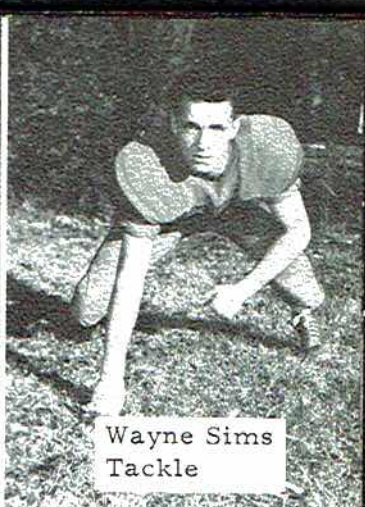
S. L. Stone  
End



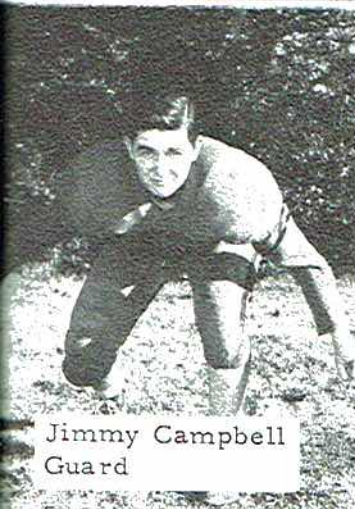
Robert Skelton  
Tackle



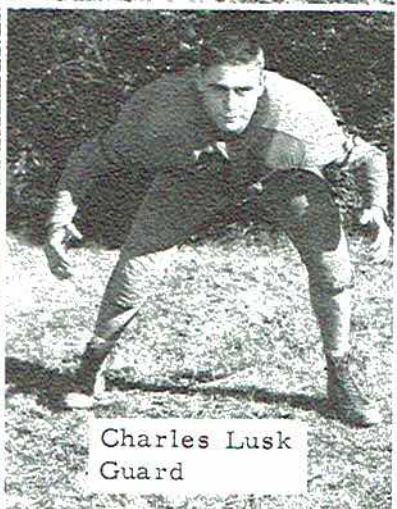
John Nix  
Tackle



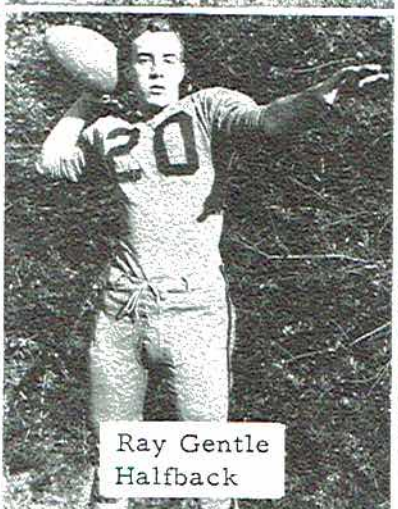
Wayne Sims  
Tackle



Jimmy Campbell  
Guard



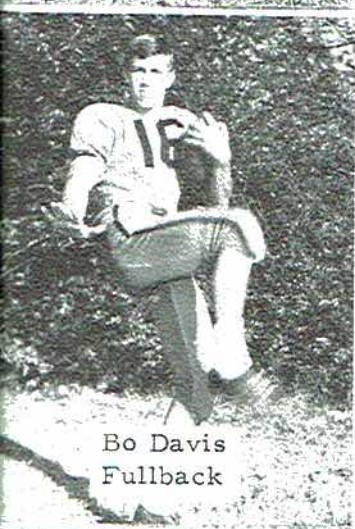
Charles Lusk  
Guard



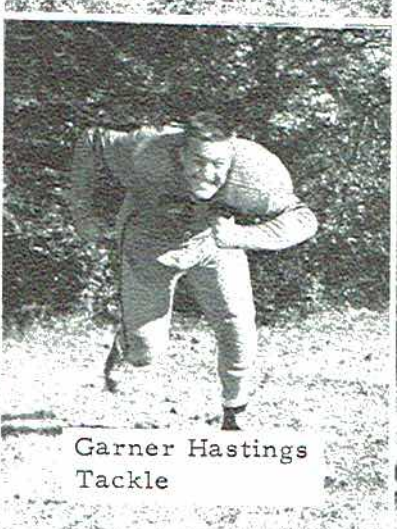
Ray Gentle  
Halfback



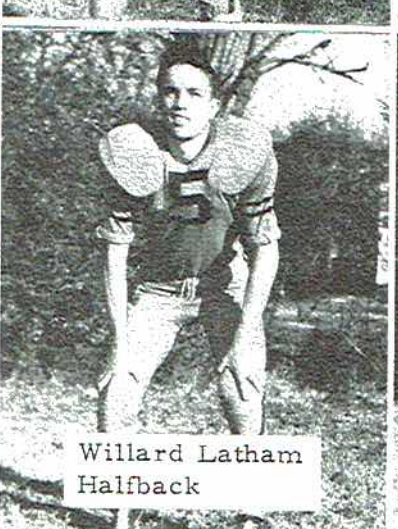
Bobby Hodges  
End



Bo Davis  
Fullback



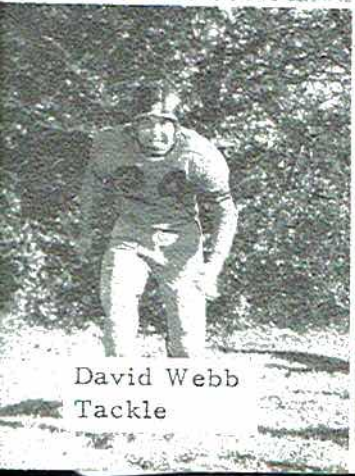
Garner Hastings  
Tackle



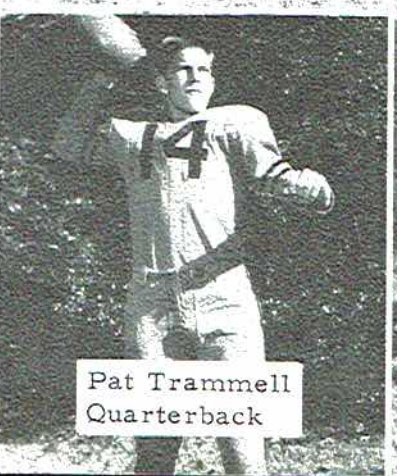
Willard Latham  
Halfback



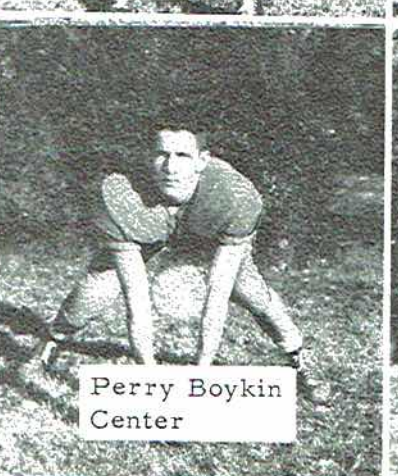
Bill Sanders  
End



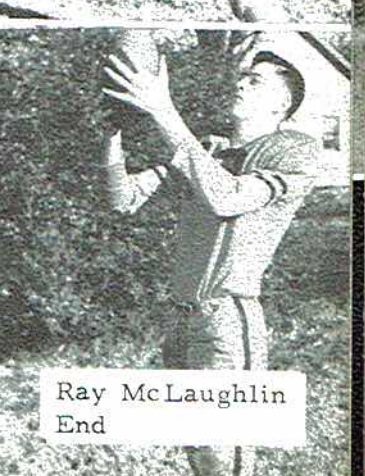
David Webb  
Tackle



Pat Trammell  
Quarterback

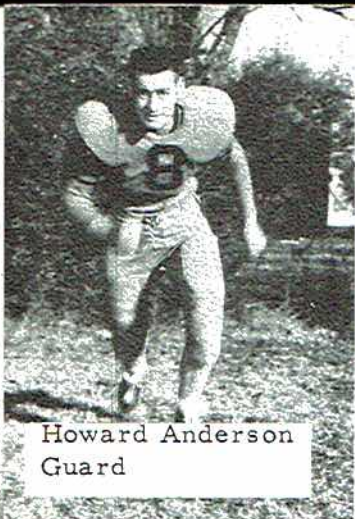


Perry Boykin  
Center

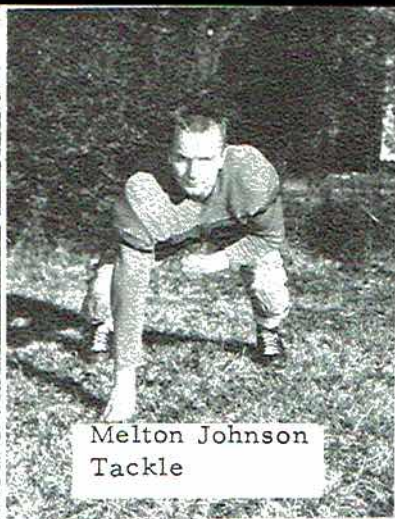


Ray McLaughlin  
End

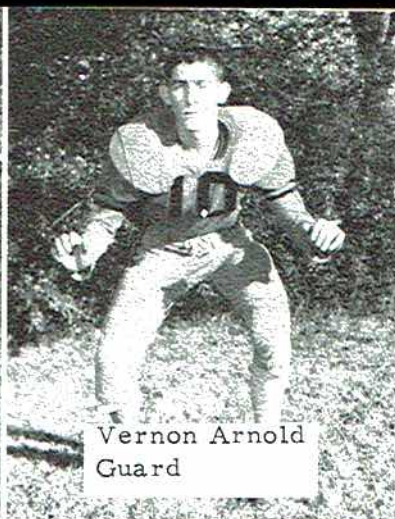




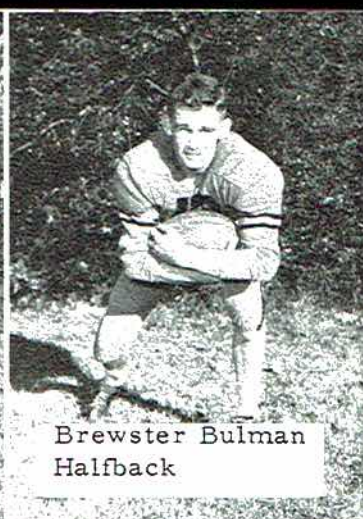
Howard Anderson  
Guard



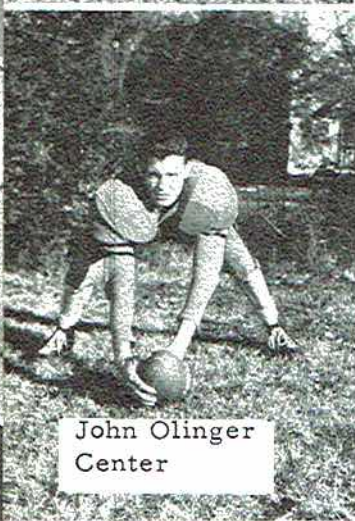
Melton Johnson  
Tackle



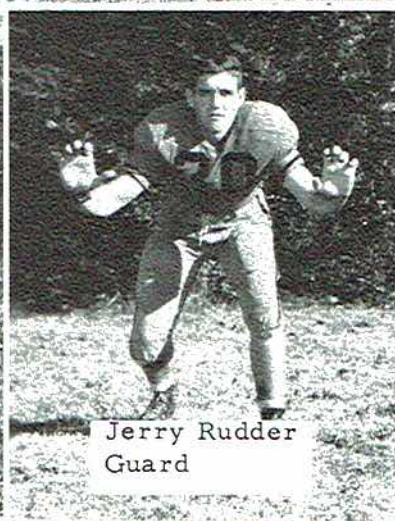
Vernon Arnold  
Guard



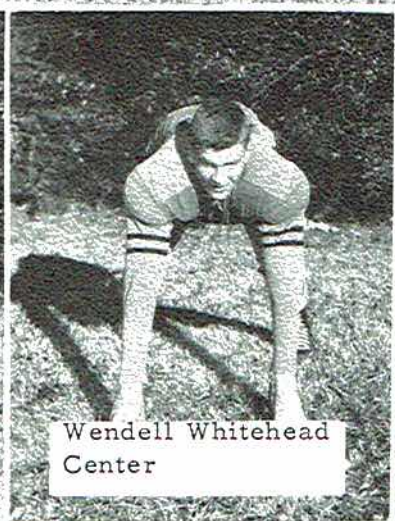
Brewster Bulman  
Halfback



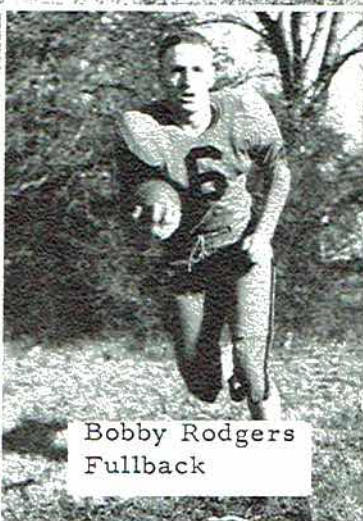
John Olinger  
Center



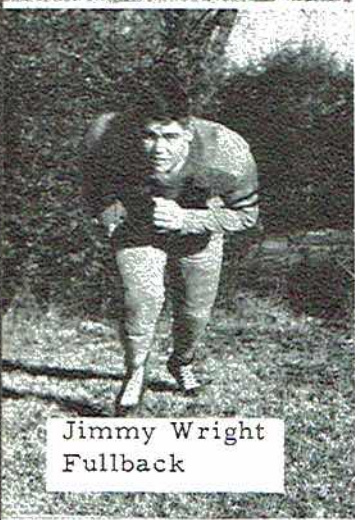
Jerry Rudder  
Guard



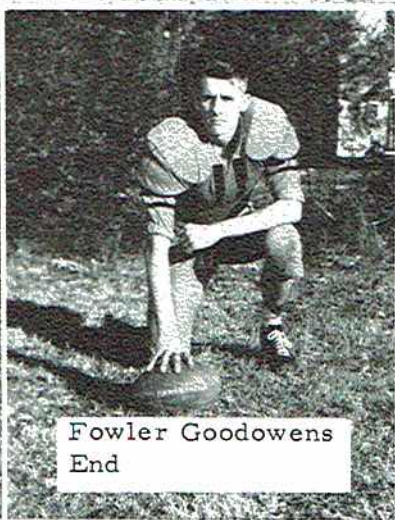
Wendell Whitehead  
Center



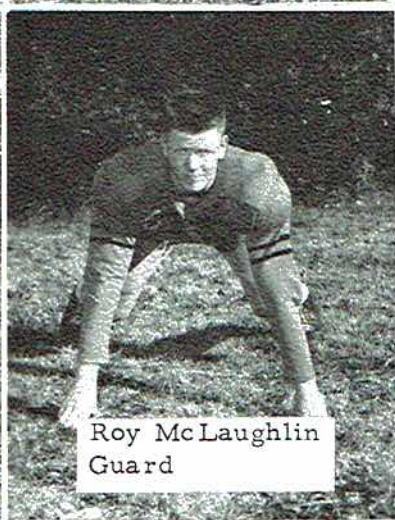
Bobby Rodgers  
Fullback



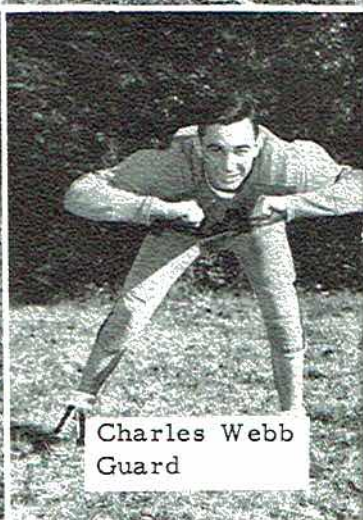
Jimmy Wright  
Fullback



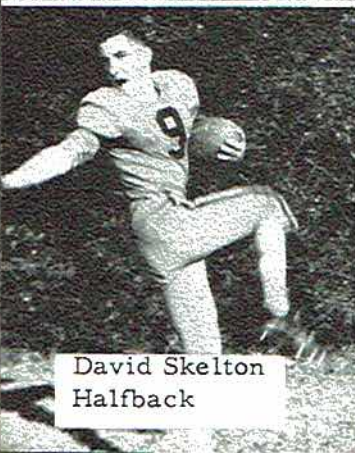
Fowler Goodowens  
End



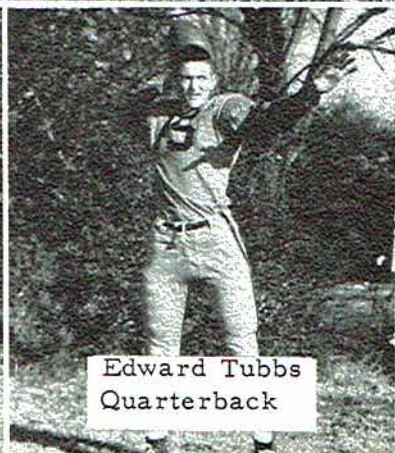
Roy McLaughlin  
Guard



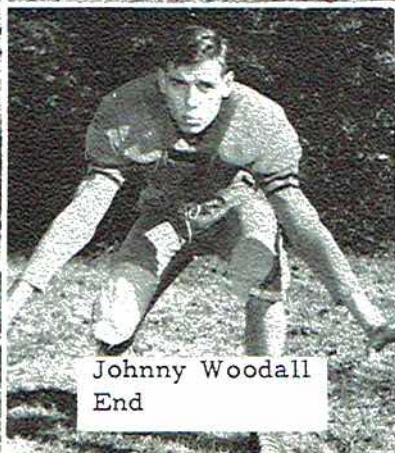
Charles Webb  
Guard



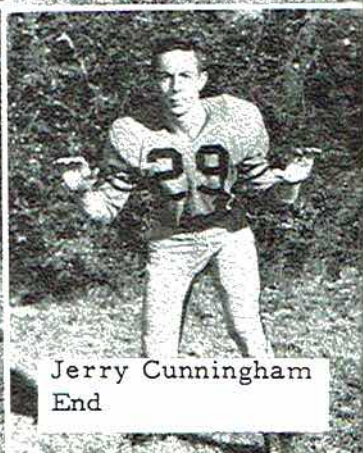
David Skelton  
Halfback



Edward Tubbs  
Quarterback

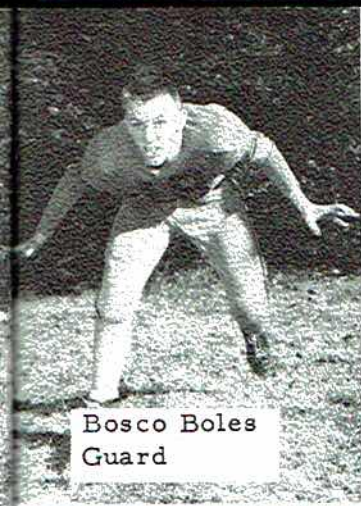


Johnny Woodall  
End

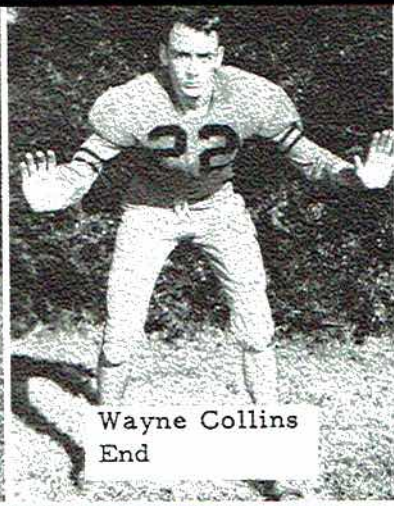


Jerry Cunningham  
End

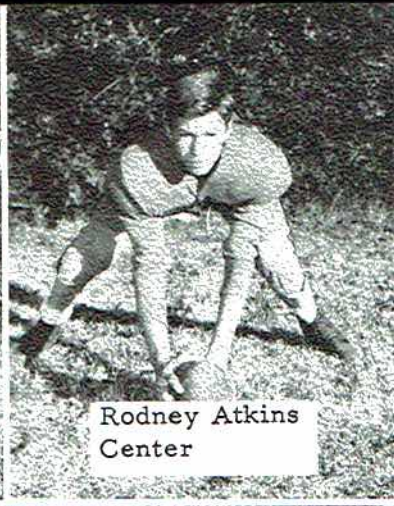




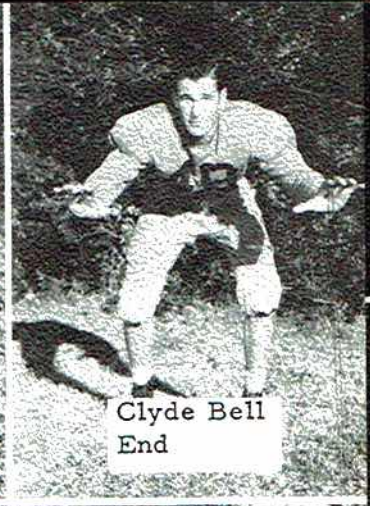
Bosco Boles  
Guard



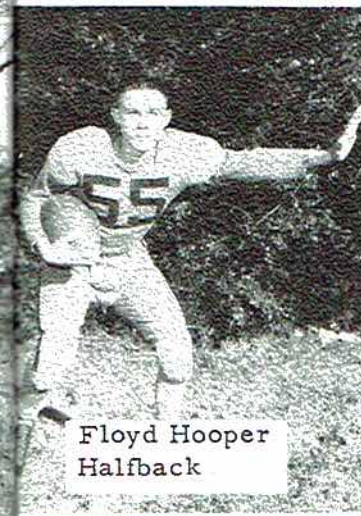
Wayne Collins  
End



Rodney Atkins  
Center



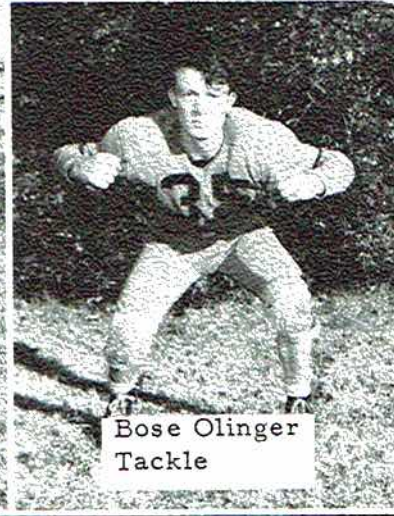
Clyde Bell  
End



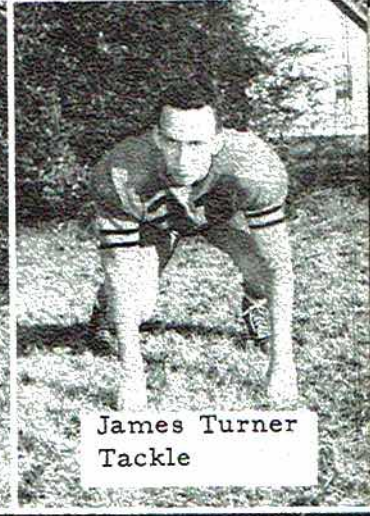
Floyd Hooper  
Halfback



Richard Pace  
Guard

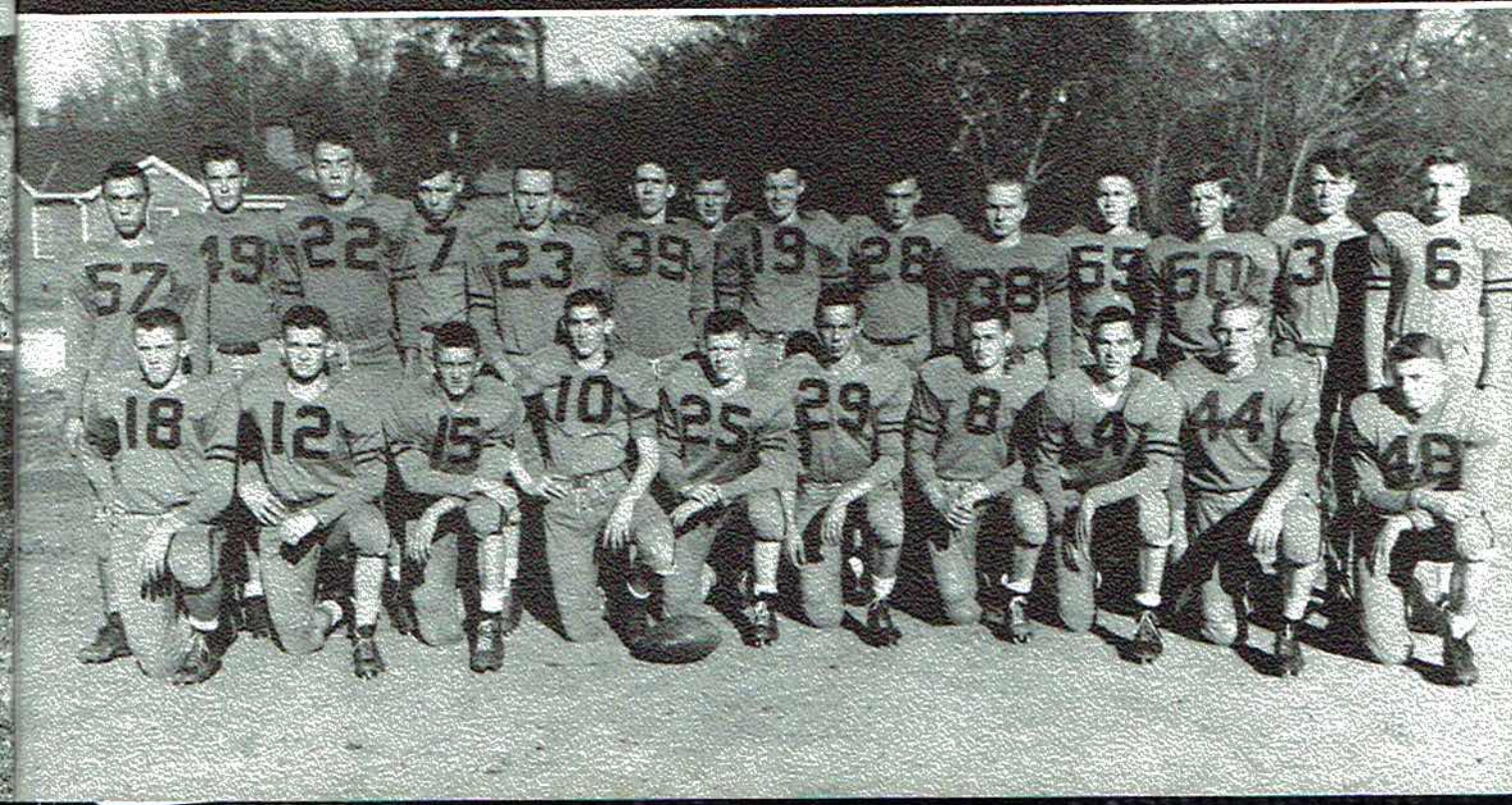


Bose Olinger  
Tackle

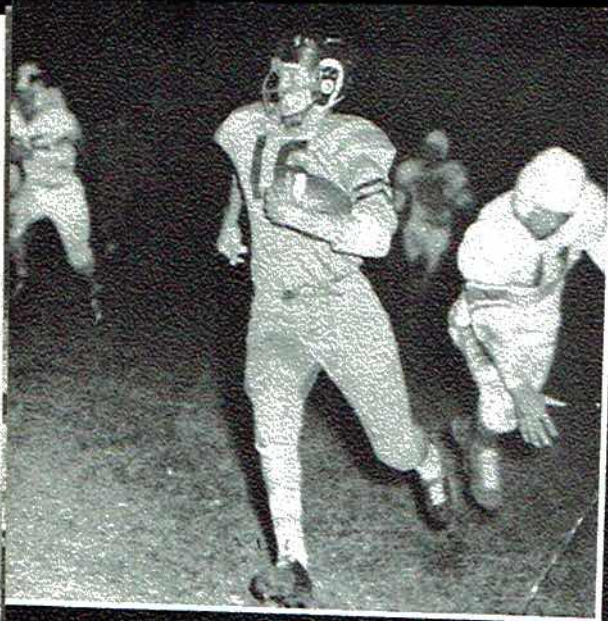


James Turner  
Tackle

*Wildcat's "B" Team*





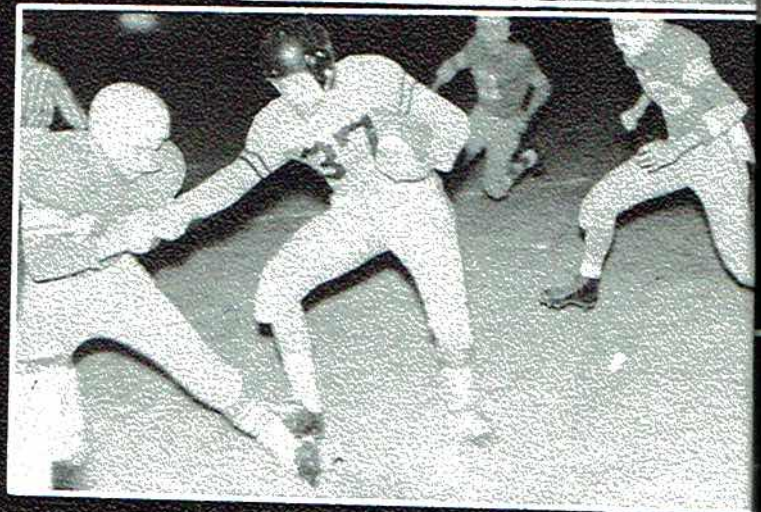


Hartselle  
Sept. 9 25-0  
The Wildcats slammed a game Hartselle team 25 to 0. in the season opener. A surprisingly accurate passing game upset the Bulldogs, but running plays helped keep them off balance.



Albertville  
Sept. 16 13-21

Albertville provided the first stumbling block of the season by topping the Wildcats 21 to 13. The Aggies grounded the 'Cats' passing game and took advantage of several defensive errors.



Stevenson  
Sept. 30 19-7

Bouncing back from defeat, the Wildcats downed Stevenson 19 to 7. The two rivals fought to the finish in a contest dominated by running plays. This time defensive errors worked for the 'Cats and they capitalized.

Guntersville

Oct. 7 6-39

Playing with determined and never-say-die attitude, the Wildcats fell to a highly-touted and undefeated G'ville eleven. Despite the defeat, our boys proved themselves worthy of their support.

Oneonta

Oct. 14 45-7

The Wildcats could do no wrong, and Oneonta went down before a ferocious eleven 45 to 7. Accurate passing, elusive running and powerful tackles highlighted the contest.



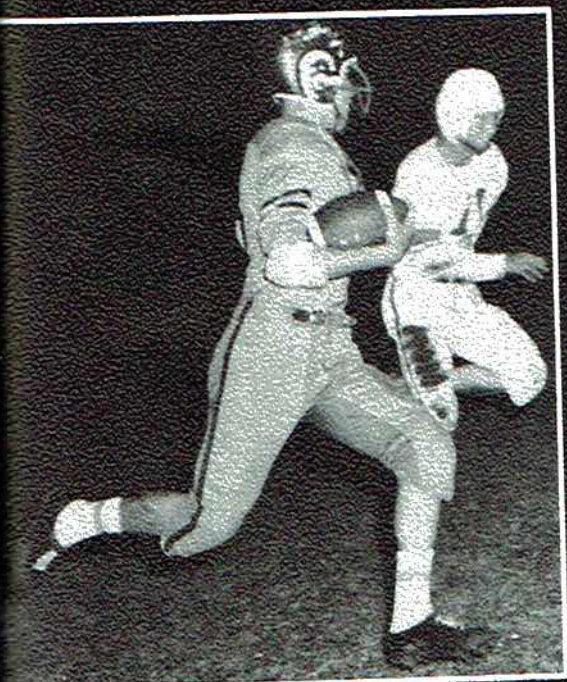




### Valley Head

Nov. 1 32-0

A "new" Wildcat team immediately took command at Valley Head, and won 32 to 0. The team from Jackson showed a much improved running game; however their passing was as effective.



### Sylvania

Nov. 11 34-0

The undefeated Sylvania Rams went to the chopping block and fell 34 to 0. An impenetrable defense,

### Fort Payne

Oct. 21 27-20

David slew Goliath at Fort Payne, as an outmanned, but determined Fort Payne team downed the Wildcats 27 to 20. Defensive errors again proved the downfall.



### Bridgeport

Nov. 7 33-0

Everything and everybody on the team broke loose on Bridgeport. After the regulars substantiated a safe lead, substitutes took over and went the distance. The Tigers fell 33 to 0.



### Hueytown



V  
A  
R  
S  
I  
T  
Y



“B”  
T  
E  
A  
M







Donald Moore  
All-State '55



S. L. Stone



Chick Nix  
Most Valuable Player  
'55



Hugh  
Stewart  
All-State  
'55



Pat Trammell



Bill Sanders



Bobby Hodges



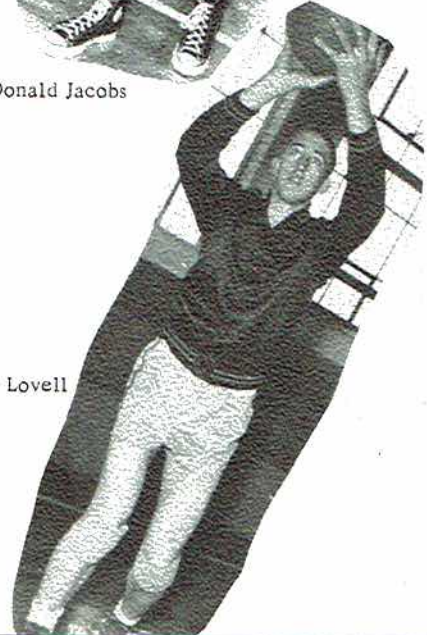
Donald Jacobs



Jack Brandon



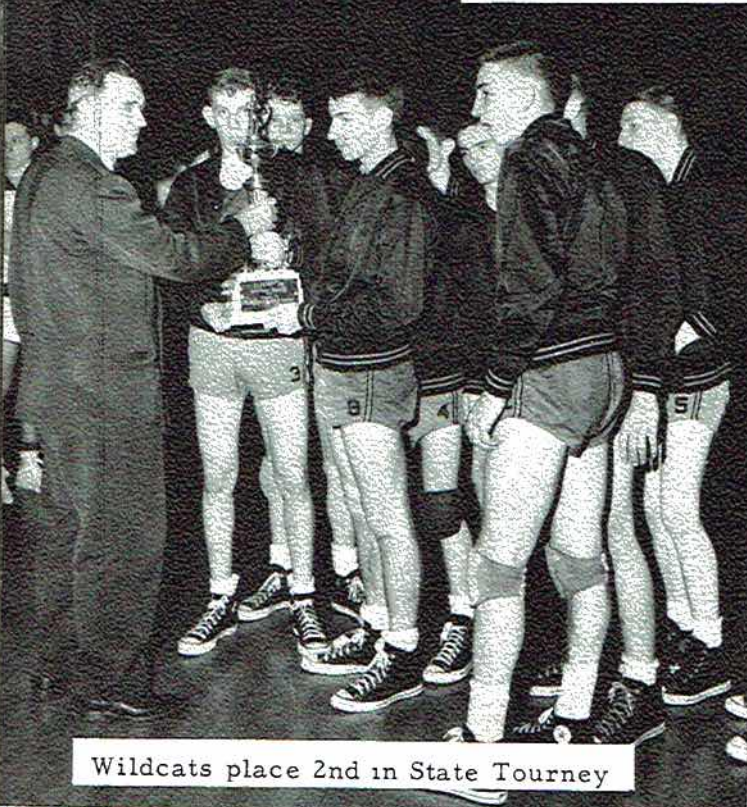
Bo Davis



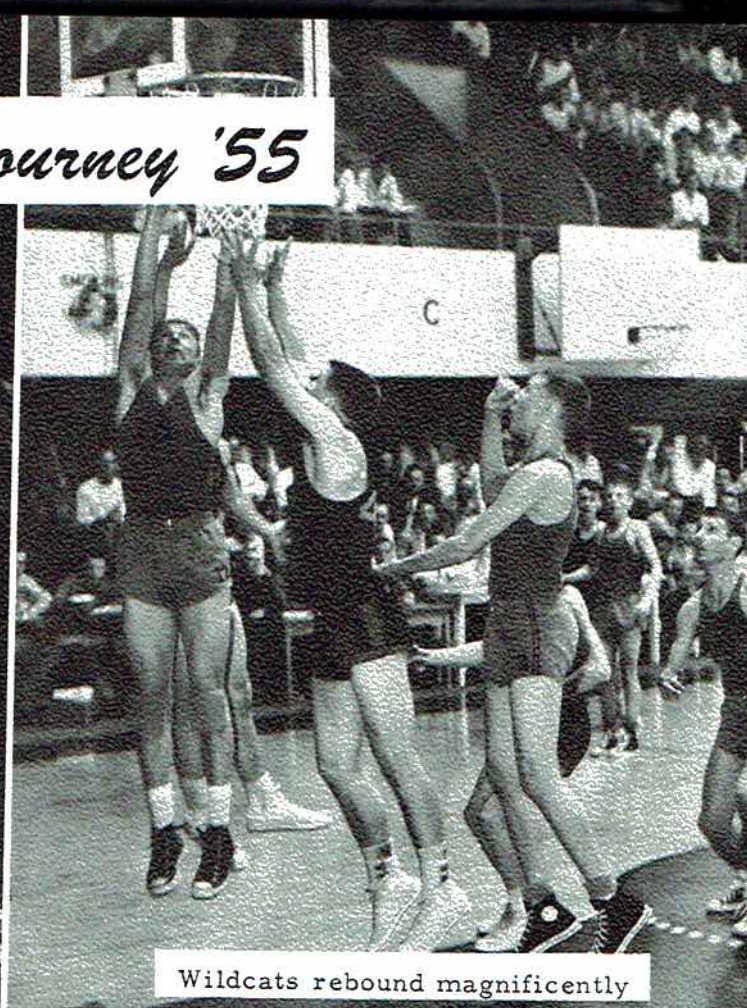
Denny Lovell



# State Tourney '55



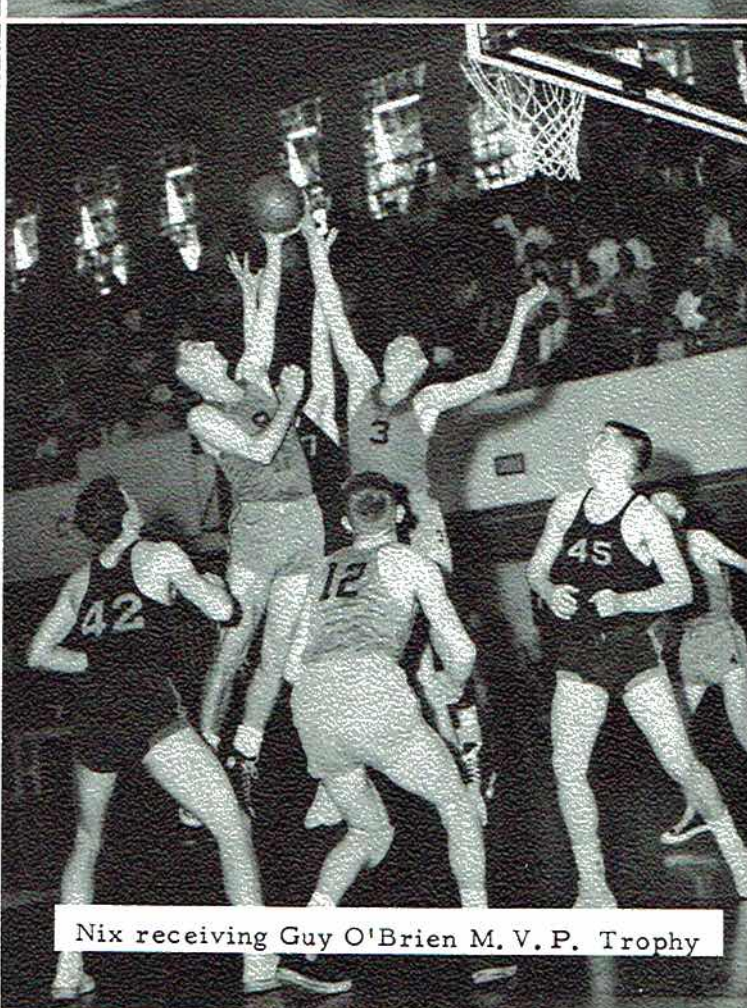
Wildcats place 2nd in State Tourney



Wildcats rebound magnificently



Scramble for ball in Fayette game



Nix receiving Guy O'Brien M. V. P. Trophy





1956



B  
A  
S  
K  
E  
T  
B  
A  
L  
L

J. C. H. S.

Opponent

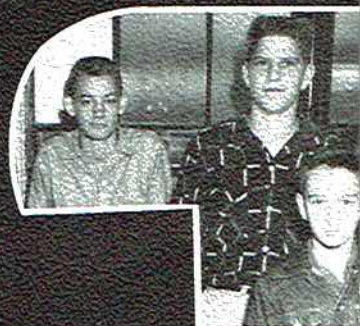
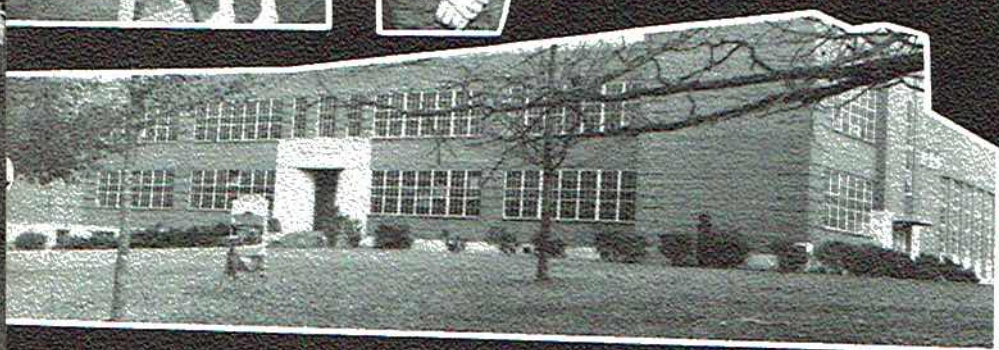
91	Geraldine	61
106	Snead	61
66	Boaz	57
80	Hamilton	64
69	Fayette	65
65	Pisgah	48
97	Sylvania	61
90	Albertville	52
76	West End	70
77	Marshall County	45
67	Coffee	72
93	Ft. Payne	49
73	Pisgah	53
88	Huntsville	54
90	Section	61
86	Butler	67
51	Boaz	52
100	Marshall County	60
70	Snead College	65
105	Geraldine	84
96	Ft. Payne	69
79	Butler	72
88	Coffee	71
92	Huntsville	51
	*Sheffield	
	*Pisgah	
	*Sheffield	

\*Games Not Played

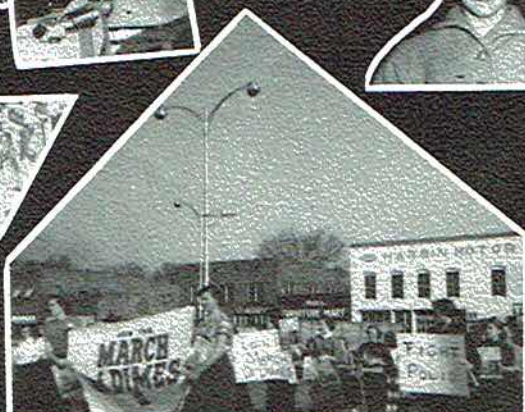
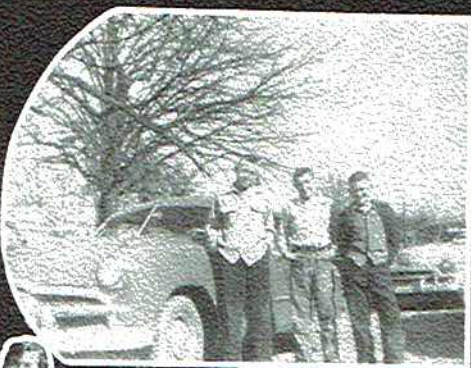
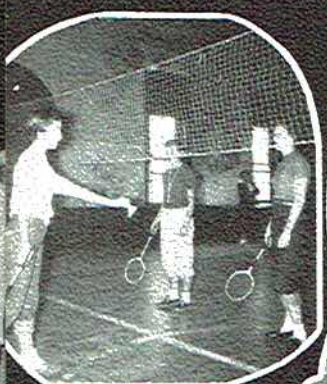
S  
C  
H  
E  
D  
U  
L  
E



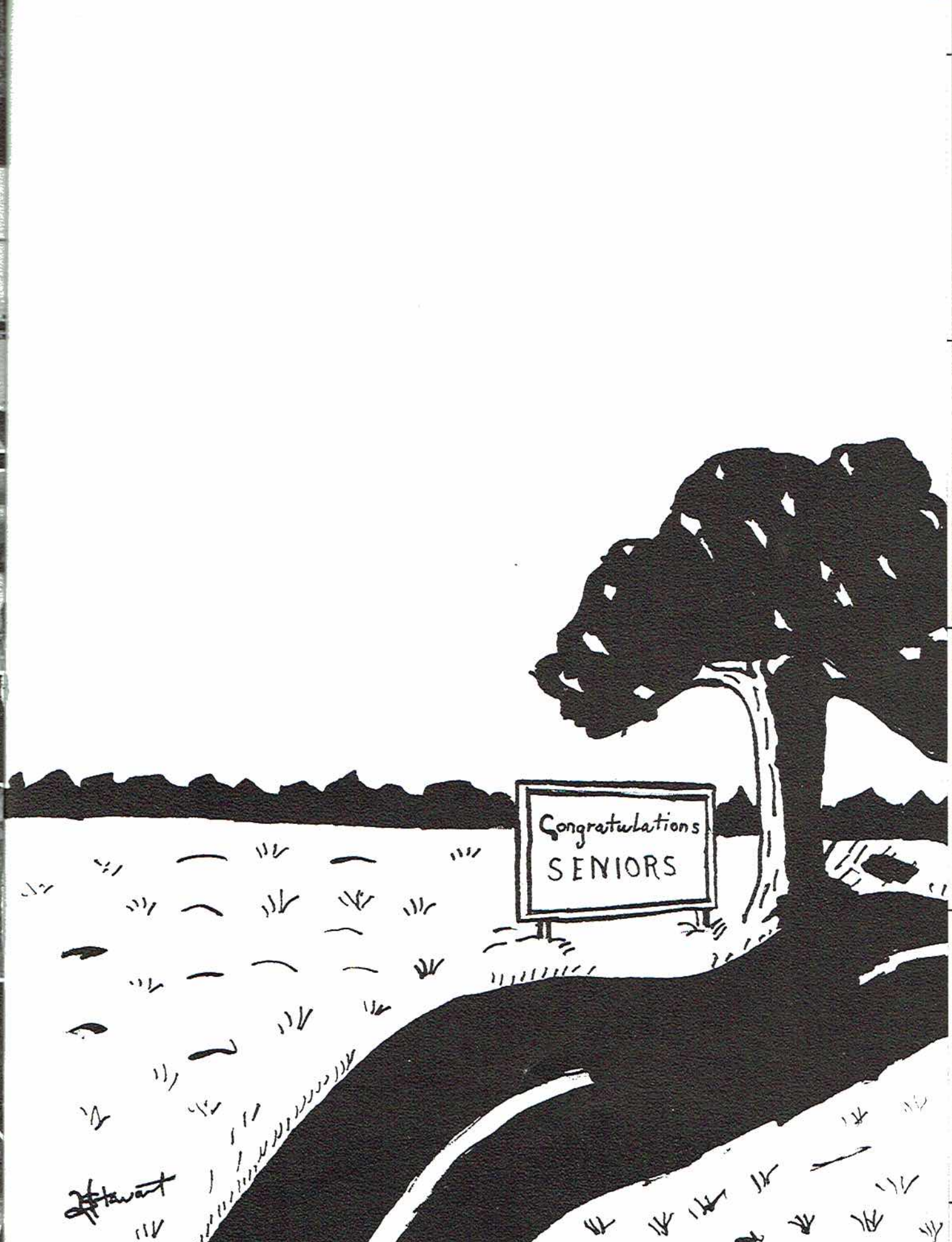




## *Snaps About The Campus*



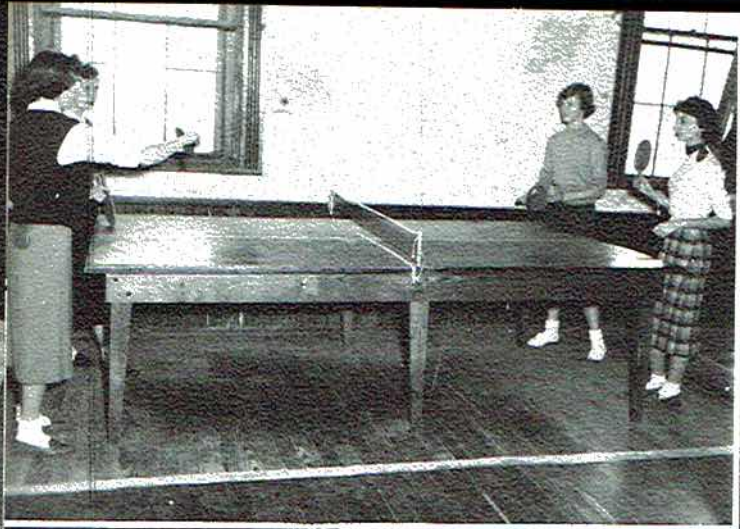




Congratulations  
SENIORS

Stewart





S  
N  
A  
P  
S  
F  
R  
O  
M

Compliments

**R. C. EAKIN**

Service Station

Compliments

**WILHELM**

Service Station

Compliments

**WOMACK**

PAN - AM

Compliments

**JOE MONEY DISTRIBUTING  
COMPANY**

Telephone 596

G  
I  
R  
L  
S  
'  
P.  
E.







Compliments  
of  
**MAJESTIC CAFE**  
Scottsboro Alabama

Compliments  
of  
**BEDDINGFIELD MOTORS**  
Scottsboro Alabama



Compliments  
of  
**LOCKER PLANT**  
Scottsboro Alabama

Compliments  
of  
**DAVIS AND MANNING**  
ready to wear  
Scottsboro Alabama



Compliments  
of  
**SCOTTSBORO FUNERAL HOME**  
Scottsboro Alabama

Compliments  
of  
**JESSICA HOTEL**  
Scottsboro Alabama



**CAMPBELL TRACTOR COMPANY**

**LAST CHANCE  
SERVICE STATION  
AND  
GROCERY**

"Your authorized Pontiac Dealer  
Scottsboro Alabama

Scottsboro Alabama

Moody Page





**JULIAN HAMBRICK'S  
GIFT SHOP**

A Complete Selection of Fine Gifts

115 Market Street  
Scottsboro, Alabama

**MILL ENDS STORE**

A Complete Line  
of Sewing Accessories

Scottsboro and Fort Payne



**PEGGY'S SHOPPE**

Exclusive but not Expensive  
Mrs. Vernon Thomas and Alice  
Scottsboro, Alabama

**GULF REFINING COMPANY**

Use Gulf Refining Company Products  
Scottsboro Alabama



1000 Watts 1330 KC'S

**RADIO STATION WROS**

"The Magic Carpet for your  
Advertising Dollar"

717 Scott Street

Scottsboro, Alabama  
in the

"Heart of the Tennessee Valley"

Owned and Operated by  
Mr. & Mrs. Hugh T. Kirby and Son  
Personnel

Rose Kirby-General Manager  
Hugh Kirby-President  
Clyde (Uncle Josh) Varner  
Bill Prickett-Chief Engineer  
Homer Monroe-Manager  
Hugh Thomas Kirby, Jr.  
Jr. Announcer

Compliments  
of

**HARBIN'S MOTOR COMPANY**

Scottsboro Alabama







OPPORTUNITIES...

...in the industrial world today are unlimited. Automation, atomic energy, a rapidly increasing population-all point toward unprecedented growth in the industrial life of our nation.

For young men and women thinking in terms of a career, the textile industry today offers opportunity "without bounds" in manufacturing, merchandising, research, development and design, and many other related fields.



The Scottsboro Plant  
of



EXECUTIVE OFFICES: Greensboro, N. C.

Burlington Mills, Pacific Mills, Burlington Hosiery Co., Peerless Woolen Mills, Burlington Decorative Fabrics Associates, Galey & Lord, Goodall Fabrics, Burlington Retail Sales Co., Burlington Narrow Fabrics, National Mallinson Fabrics, Burlington Export Co., Mooresville Mills, Burlington International, Ely & Walker.



Compliments of

**COPLIN HARDWARE COMPANY**

"Your Kelvinator Dealer"

Scottsboro                      Alabama

Compliments of

**BENHAM UNDERWEAR MILLS**

Scottsboro                      Alabama





# SCOTTSBORO HARDWARE CO.

"The School's Friend"

Bendix Appliances

Phone 39

Scottsboro

Alabama

Compliments of

## THE LADIES AND CHILDRENS SHOPPE

Scottsboro Alabama

Compliments of

## BOYD-MERIDETH MOTOR CO.

Scottsboro, Alabama

## PATRICK LUMBER CO.

"Everything To Build  
Anything"

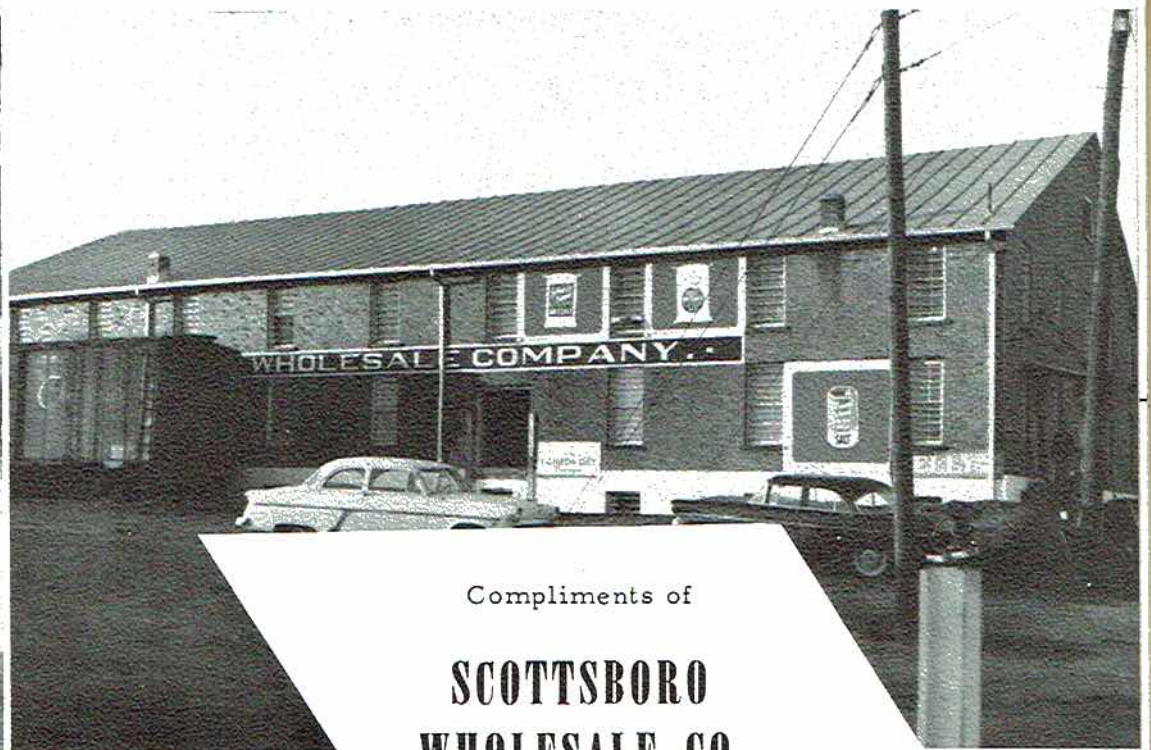
Dependable Quality

Since 1926

Scottsboro Alabama







Compliments of  
**SCOTTSBORO  
 WHOLESALE CO.**

**STATE NATIONAL BANK  
 OF DECATUR**

Scottsboro, Alabama  
 One of many good banks  
 serving North Alabama.

**GIST'S JEWELRY AND STUDIO**

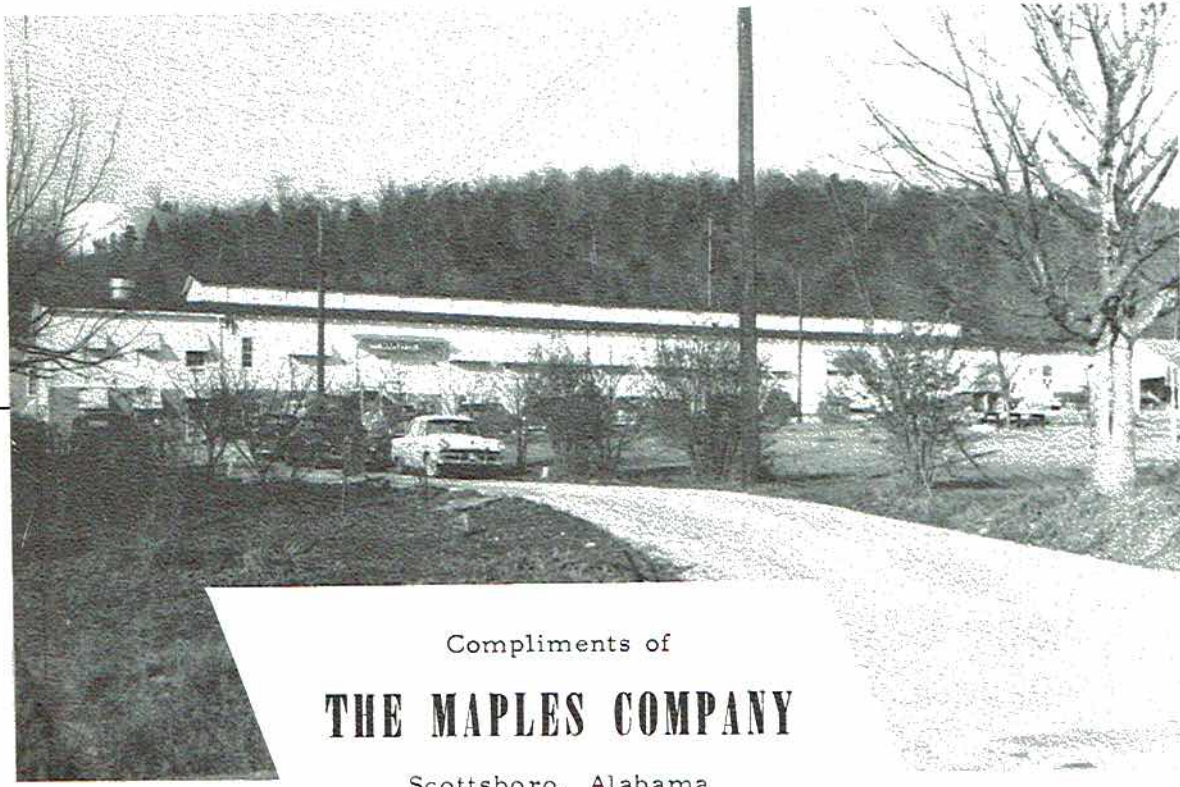
Watches Diamonds Jewelry  
 Silverware

316 Broad Street

Many thanks for selecting  
 our studio to make your annual  
 pictures.

Scottsboro, Alabama





Compliments of  
**THE MAPLES COMPANY**

Scottsboro, Alabama



**There's a "one and only"  
in refreshment, too**



*Autographs*

---

---

---

---

---

---

---

---

BOTTLED UNDER AUTHORITY OF THE COCA-COLA COMPANY BY

**SCOTTSBORO COCA-COLA BOTTLING COMPANY**





Compliments to all  
Students and Teachers of  
Jackson County High School

Compliments  
of

**HAMMER'S**

Scottsboro, Alabama  
Congratulations to the Class of  
1956

**J. C. JACOBS BANKING  
COMPANY, INC.**

Scottsboro, Alabama

Compliments of

**ADAMS & CHAMBERS**

Exclusive Merchandise  
Scottsboro, Alabama

Compliments of

**"REID'S"**

Scottsboro, Alabama

Compliments of

**WOODALL'S READY-TO-WEAR**

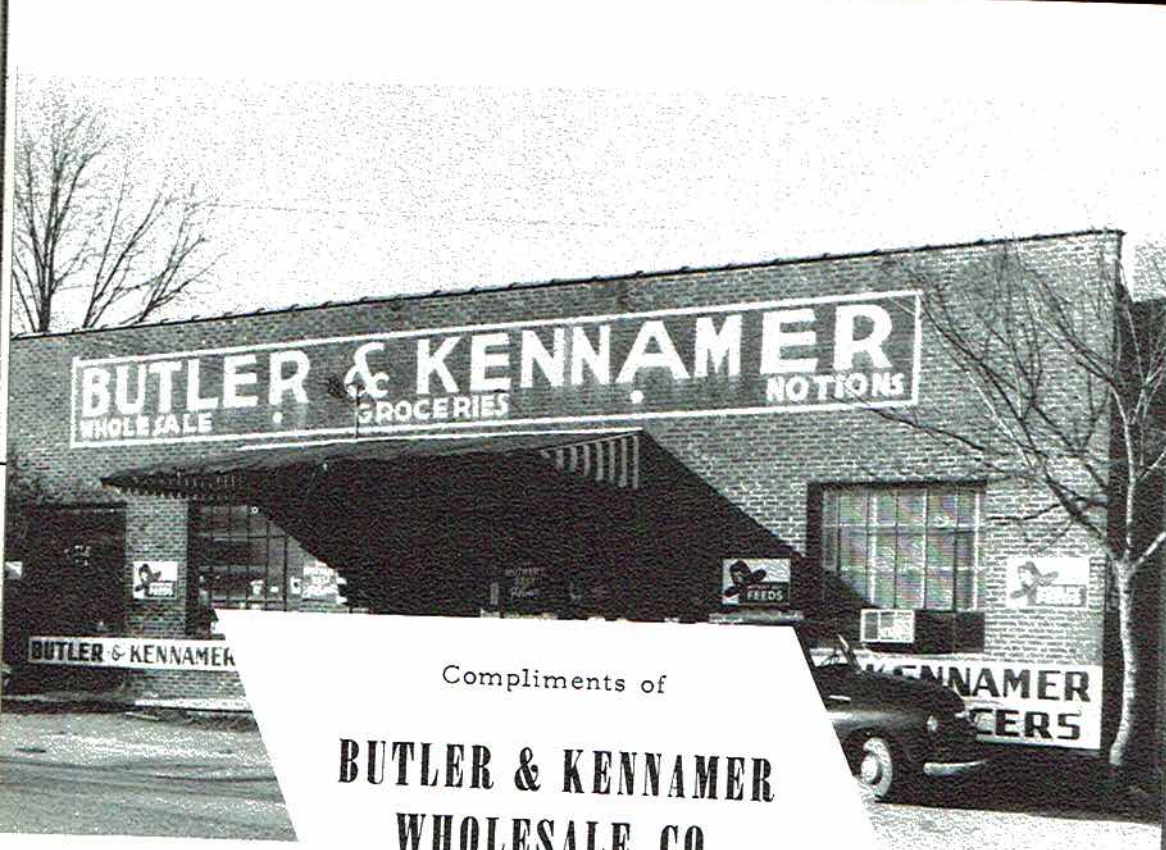
We appreciate your Business  
Scottsboro, Alabama

Compliments of

**McCAMY'S**

See Ralph Carter  
&  
Bobby Stewart  
Scottsboro, Alabama

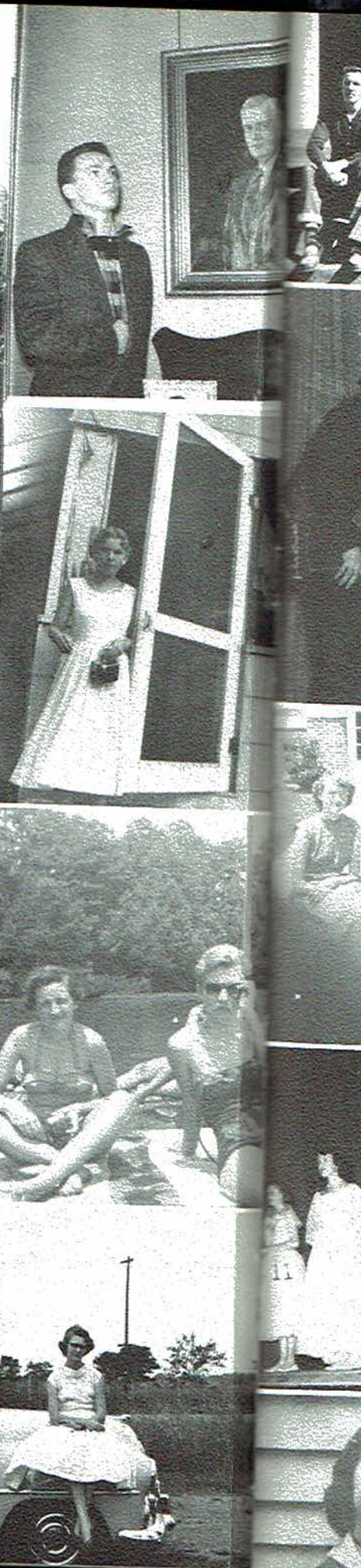




Compliments of  
**BUTLER & KENNAMER  
WHOLESALE CO.**

# WORD THEATERS

Your  
Air Conditioned Ritz  
Tawasentha and Rainsville Drive In Theatres  
"MOVIES ARE BETTER THAN EVER"







## MARY B. BREWER, AGENCY

"All Kinds of Insurance

Scottsboro          Alabama

Phone 144-J



Compliments of

## WORD MOTOR COMPANY

Your Chevrolet and Oldsmobile Dealer



## W. H. PAYNE DRUG CO.

Your Prescription Store

Scottsboro, Alabama

Brooks Woodall

Herbert Glass



## FARM SERVICE, INC.

Scottsboro, Alabama

Phone 68

Seeds - Baby Chicks - Purina Chows

Management Services





## SCOTTSBORO SHOE STORE

"Shoes for the Entire Family"

John C. Roberts for Men

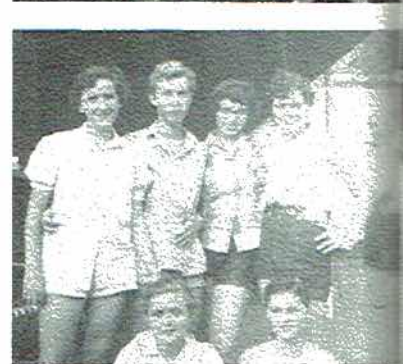
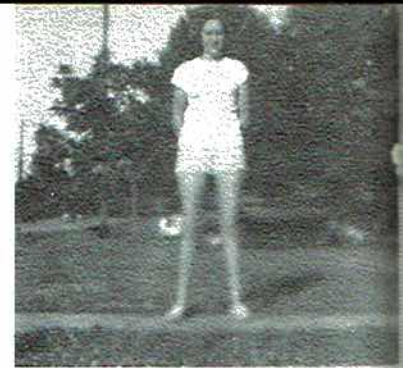
Grace Walker for Women

Red Goose for Children

Scottsboro, Alabama

## B & G BUTANE PROPANE GAS CO.

Cooking Heating  
Refrigerating Water Heating  
Scottsboro Alabama



## WORD FURNITURE COMPANY

"HOME OF GOOD FURNITURE"

Phone 76

Scottsboro, Alabama

Compliments of

E. S. Monroe

Jack Downey

E. A. Nash

Gene Gamble

F. S. Stacy

Freck McClendon

Waylon Thomas

**LIBERTY NAT'L LIFE INS.  
REPRESENTATIVES**





## WALES JEWELRY

"Gifts That Last"

Phone 294

Scottsboro, Alabama

Compliments of  
**THE QUALITY STORE**

Scottsboro, Alabama

Compliments of  
**STONE'S DEPARTMENT STORE**

Ready to Wear

Peter's Diamond Brand Shoes

Piece Goods

## DARWIN'S

Popular Priced Merchandise

Scottsboro

Alabama

Compliments of  
**JEFF'S APPLIANCE STORE**

Scottsboro Alabama

## GUY HOLLIS FURNITURE CO.

Scottsboro Alabama 9

## HODGES DRUG STORE

R. L. Hodges Charles Hodges

"As Near As Your Telephone"

Scottsboro, Alabama

## I. E. AIRHEART AND SON FEED AND SEED STORE

Scottsboro

Alabama



nts of

RESTAURANT  
TIC CAFE

Compliments of your  
**FRIENDLY FIRESTONE STORE**

Phone 480  
Scottsboro, Alabama



nts of

**MOTEL**

B. Presley

Alabama

**THOMAS DRUG STORE**

Wm. T. Thomas. R. Ph.  
Prescriptionist

Phone 115  
Scottsboro Alabama



ab

**WN**

Alabama

Compliments  
of

**DAVIS CLEANERS**

Phone 344  
Scottsboro Alabama



**S DEPOT**

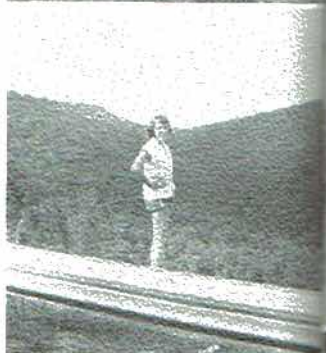
e Magahey

and N.E.A.  
IES

Compliments of

**SHOOK'S LAUNDRY CLEANERS**

Phone 88







Compliments  
of  
**PROCTOR AND STEELY  
FURNITURE CO.**  
Scottsboro, Alabama

Compliments  
of  
**THE BAMATUFT COMPANY**  
Scottsboro, Alabama



Compliments of  
**SCOTTSBORO JEWELRY**  
Scottsboro, Alabama  
Phone 41

Compliments of Yarbrough  
**YARBROUGH FURNITURE  
COMPANY**  
Scottsboro, Alabama



Compliments  
of  
**BOCANITA THEATRE**  
Scottsboro, Alabama

Compliments of  
**W. E. TANKERSLEY**  
your  
State Farm Insurance Agent



Compliments of  
**C. O. REED AGENCY**  
General Insurance and Bonds  
Phone 471--State National Bank  
Bldg.  
Scottsboro, Alabama

Compliments of  
**ROUGH AND TUMBLE  
FURNITURE COMPANY**  
"The Little Man's Friend"  
Phone 238-J  
Scottsboro, Alabama



