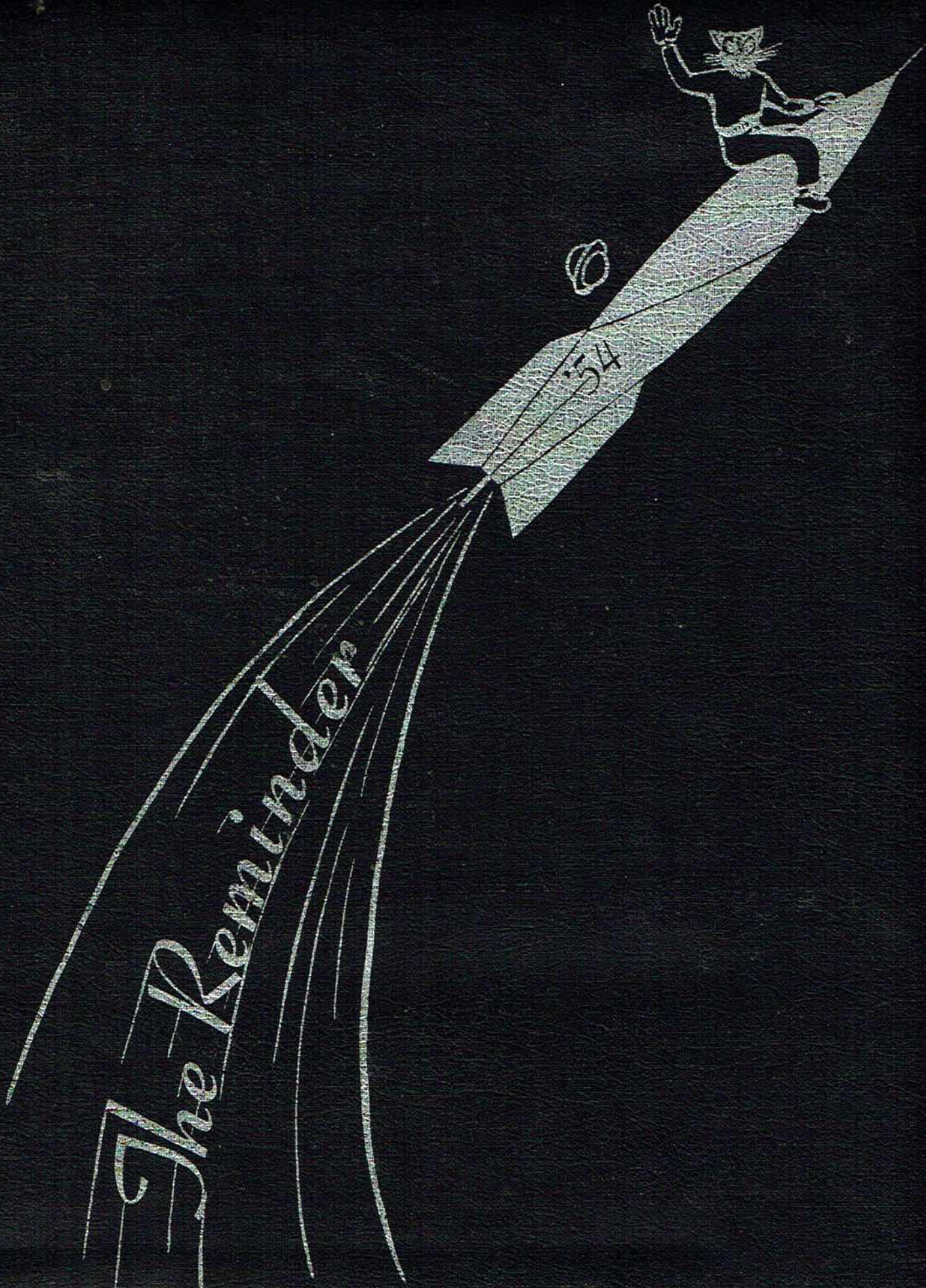
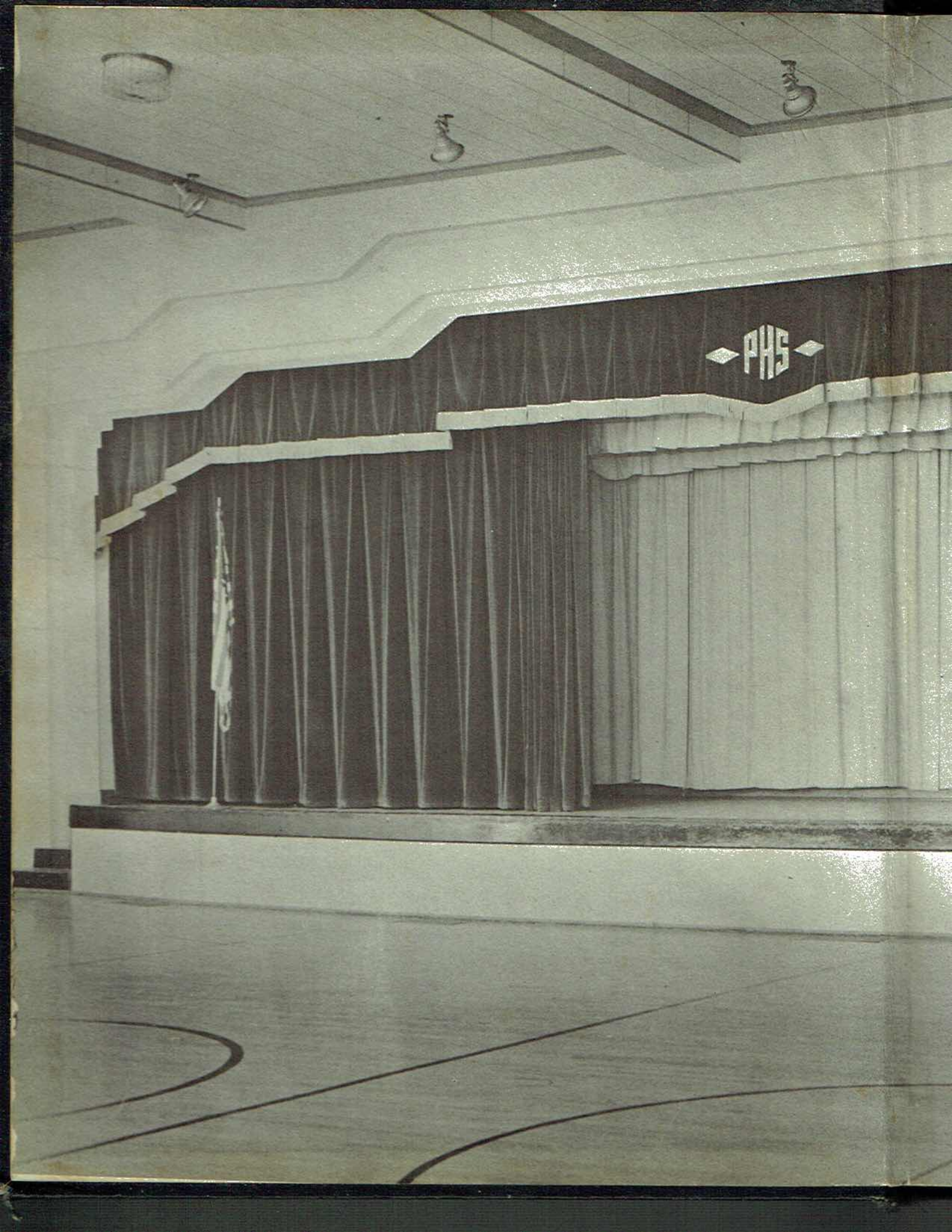
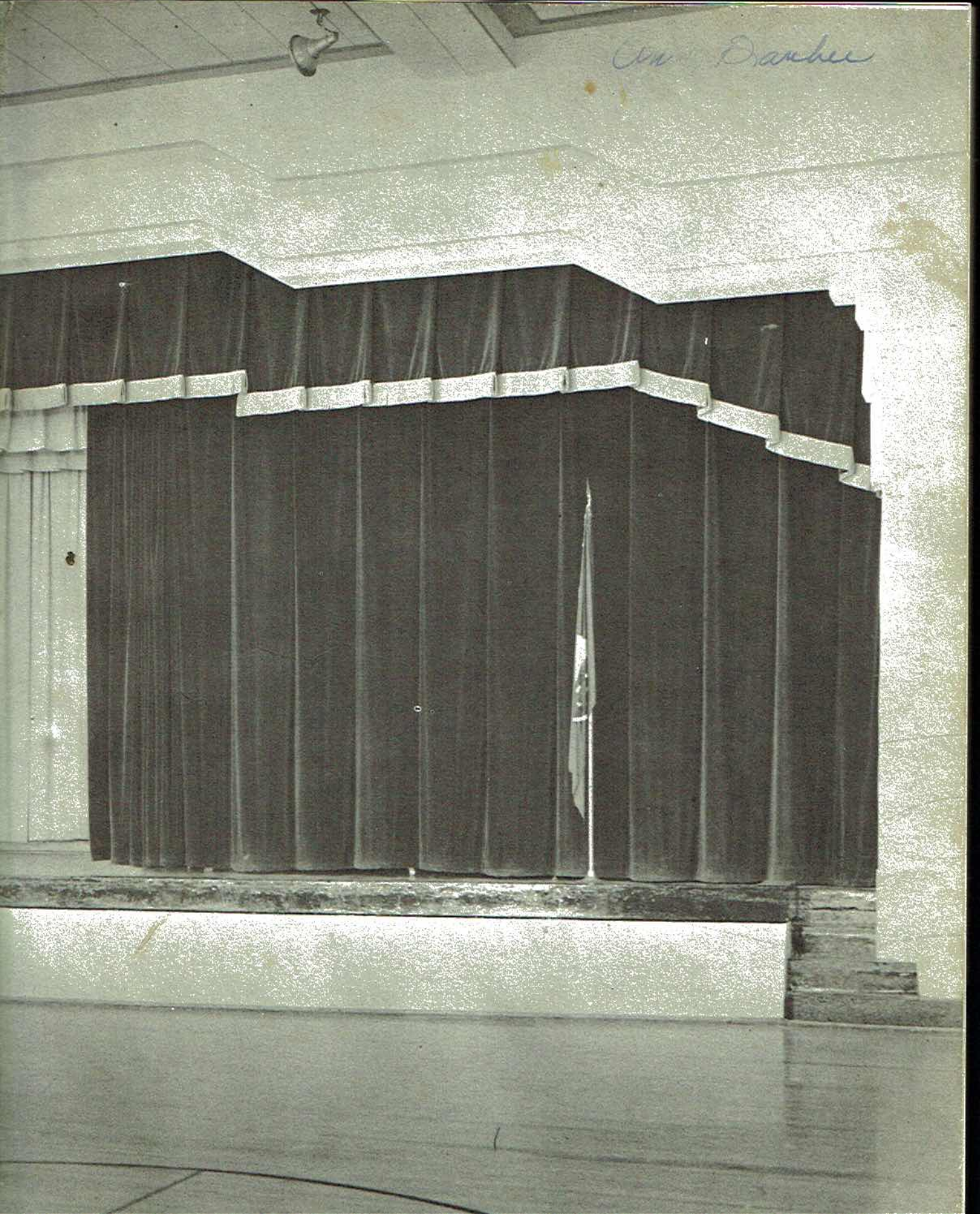


*The Reminder*

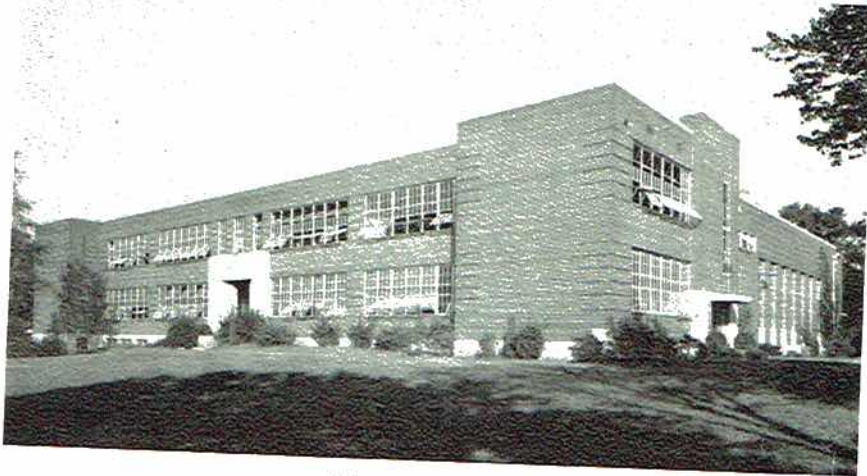




Chas. Drake



# The '54 Reminder



ALMA MATER

Jackson High School, listen to us,  
To our vows of love,  
To ourselves and to each other  
Faithful friends we'll prove.

High School days are swiftly fleeing,  
Soon we'll leave thy halls,,  
Ne'er to join another meeting,  
In thy hallowed walls.

So farewell dear Alma Mater,  
May thy name we pray,  
Be revered ever pure and stainless,  
As it is today.

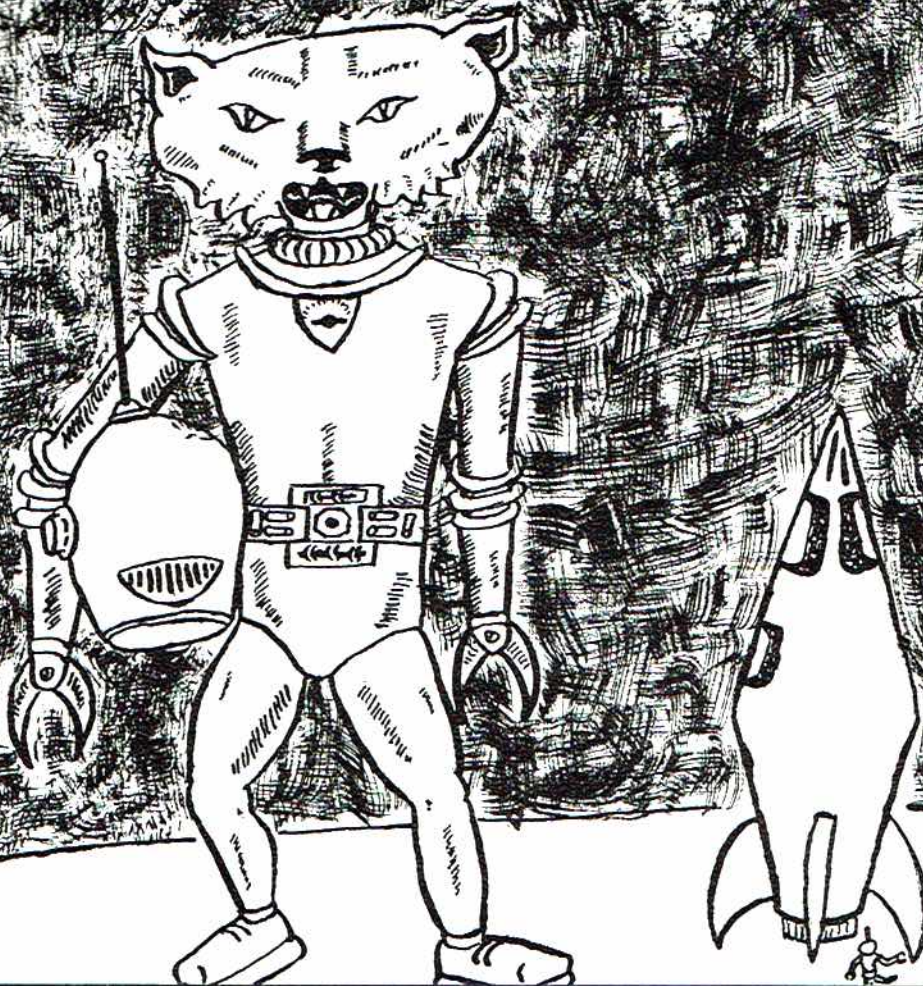
#### CHORUS:

Faithful, loyal, firm, and true  
Heart bound to heart will beat,  
Year by year the ages through,  
Until in Heaven we'll meet.

# FOREWORD

The J. C. H. S. Seniors have spent this year working toward definite goals. After graduation we will begin our struggle for success. This is why we have selected "On to the Stars!" as our theme, attempting to portray the stages of preparation for graduation. It is up to the reader to decide whether or not we have at least partially succeeded in our undertaking.

# On To The Stars!



# DEDICATION

To the business, professional, and religious financial sponsors who are looking to the future and doing their part to bring about rapid progress and advancement in all fields, to these--our progressive advertisers who by their liberal yearly contributions have made possible the regular publication of an annual--, we dedicate the '54 Reminder as a symbol of appreciation.

- Gift Shop
- Hollywood Crossroads & Bob Starkey
- Foster's Super Market
- Scottsboro Auto Parts
- Bamatuft
- Five Points Motel
- Guy Hollis Television & Supply
- O. K. Rubber Welders
- Red Hot Store
- Scottsboro Jewelers
- J. Fred Himburg
- W. J. Word Lumber Co.
- Variety Bake Shop
- Happy Valley Dairy
- Dr. Ralph Sheppard
- Radio Station WROS
- Jeff's Appliances
- W. Loy Campbell
- Reid's
- E. S. Hollis
- Yarbrough Furniture Co.
- Butler & Kenamer
- Motor Sales
- Fackler Gin Co.
- Ann's Cafe
- Word Theatres
- Word Motor Company
- Davis Cleaners
- The Harris Store
- Dairy King
- Blackwell's Feed Store
- Sue Mae's Hat Shop
- I. E. Airheart & Son
- Hodges Drug Store
- Bocanita Theatre
- Alabama Oil Co.
- Wales Super Market
- Dr. Sarah E. Atchley
- Thomas Drug Store
- Woodall's
- Benham's Underwear Mill
- Farmer's Gin Co.
- Scottsboro Funeral Home
- Gulf Refining Co.
- Paul Brewer Agency
- B. & G.
- Wales Jewelry
- Wales Super Market
- Thomas Drug Store
- Stone's Department Store
- Benham's Underwear Mill
- Farmer's Gin Co.
- Gulf Refining Co.
- Paul Brewer Agency
- B. & G.
- Wales Super Market
- Wales Jewelry
- Thomas Drug Store
- Stone's Department Store
- Benham's Underwear Mill
- Farmer's Gin Co.
- Gulf Refining Co.
- Paul Brewer Agency
- B. & G.



M. G. COUCH  
Principal

# OUR FACULTY

"What can I do for you?"



MRS. M. G. COUCH  
Librarian



MRS. NEWMAN DAVIS  
English



MRS. GEORGE ARMSTRONG  
English



LEWIS W. PAGE  
Social Studies



WILLIAM T. SLOAN  
Science



MRS. WILLIAM SLOAN  
Physical Education



MRS. SAM HODGES JR.  
Social Studies



MRS. BOYD TURNER  
Home Economics



MRS. RUDOLPH JONES  
English, Social Studies



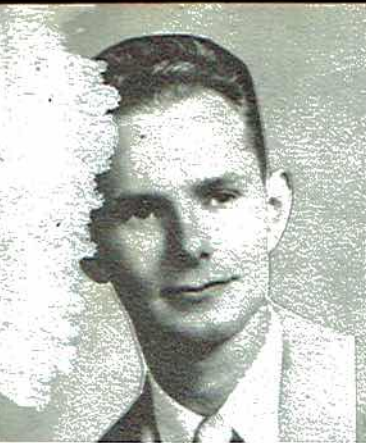
MRS. FRANK HODGES  
Mathematics; Glee Club



MRS. DELBERT HICKS  
English



MRS. J. A. LEE  
Science



GEORGE BAKER,  
Band



RAYMOND W. BATES  
Driving and Mathematics



MRS. GAY VAUGHT,  
Core and English



MISS CORA  
MICHAELS  
Mathematics



I. K. CARTER  
Coach



MRS. HOLLIS  
HAMBRICK  
Social Studies



EDWARD SPEARS  
Coach



MISS VIRGINIA WEST  
Core and English

*and Charles Gilliam*

MILL LILLY PORTER  
Science



H. E. PHILLIPS  
Agriculture



MISS GERTRUDE  
STOCKTON  
Core and Science



MRS. KENNETH MUSE  
Commercial



MRS. SAM McCRARY  
Core and Mathematics



MISS BEATRICE FINNEY  
Core and English





# MAY DAY



Carolyn Downey  
MAID OF HONOR



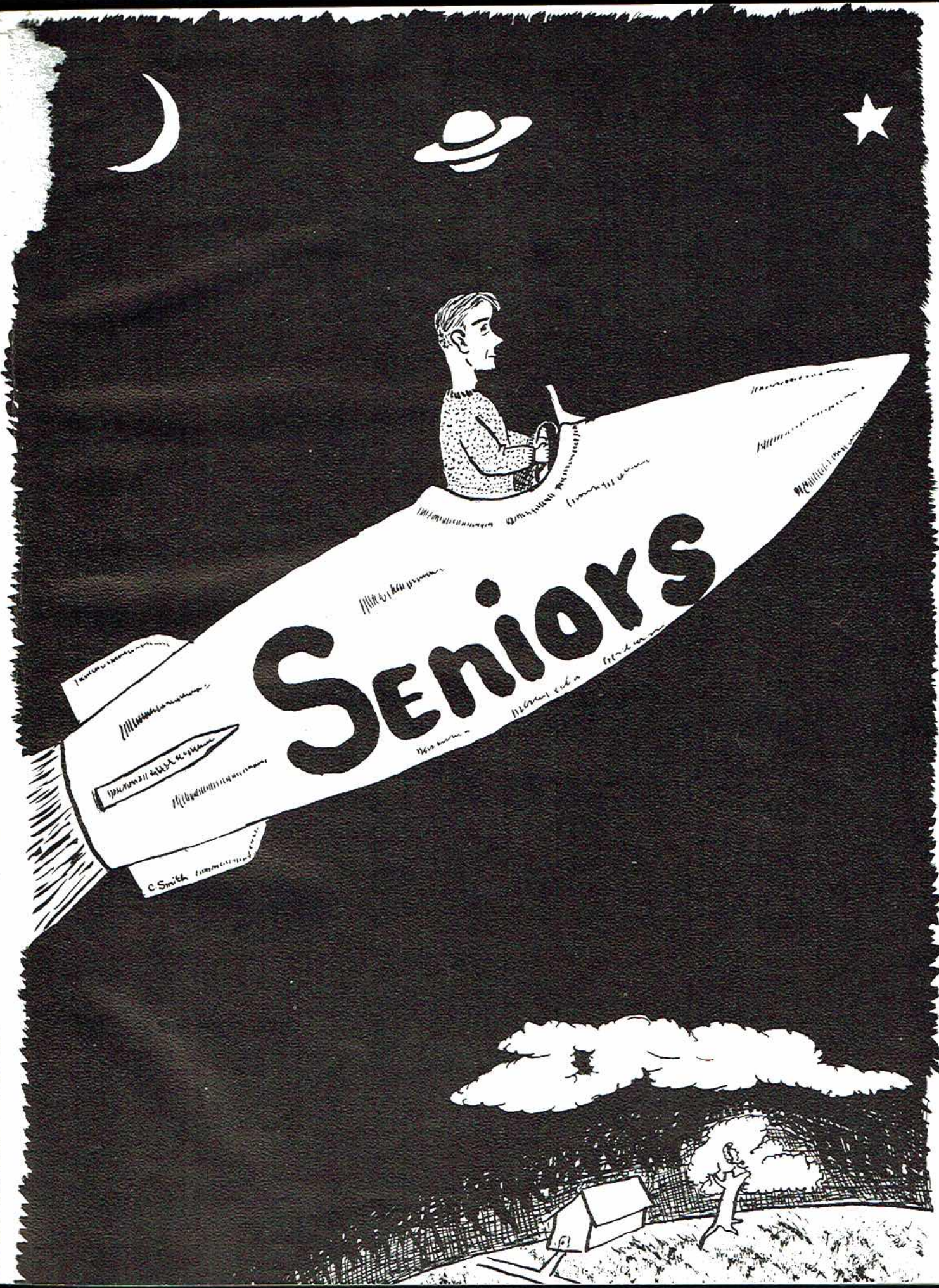
Jean Dawson  
MAY DAY QUEEN



Jean Dawson and  
Carolyn Downey

Jean Dawson, QUEEN  
Carolyn Downey, MAID OF HONOR  
ATTENDANTS: Bonnie Harbin,  
Annette Arendale,  
Janie Myers,  
Bettye Thompson,  
Harriet Bates, and  
Wanda Latham.





Seniors

C. Smith



JEAN DAWSON, Treasurer  
 Scottsboro  
 Band '52; Student Council '53, '54; Wildcat  
 Staff '54.

WILLIAM DEAN, President  
 Scottsboro  
 Band '51, '52; Football '53, '54; Student Coun-  
 cil '52, '53, '54; Photography Club '54; Boys'  
 State '53; Bugler '54.



*deceased*

RAY SMITH, Vice-President  
 Larkinsville  
 Photography Club '54.

JANE HODGE, Secretary  
 Scottsboro  
 Reminder Staff '52, '53, '54; Wildcat Staff '52,  
 '53, '54, Editor '54; Band '52; F. T. A. '52,  
 '53, '54; Student Council '54.

*deceased 2/13*



*deceased*

RUDOLPH ALLEN ~~*deceased*~~  
 Dutton  
 F. F. A. '52, '53, '54; Student Council '52.

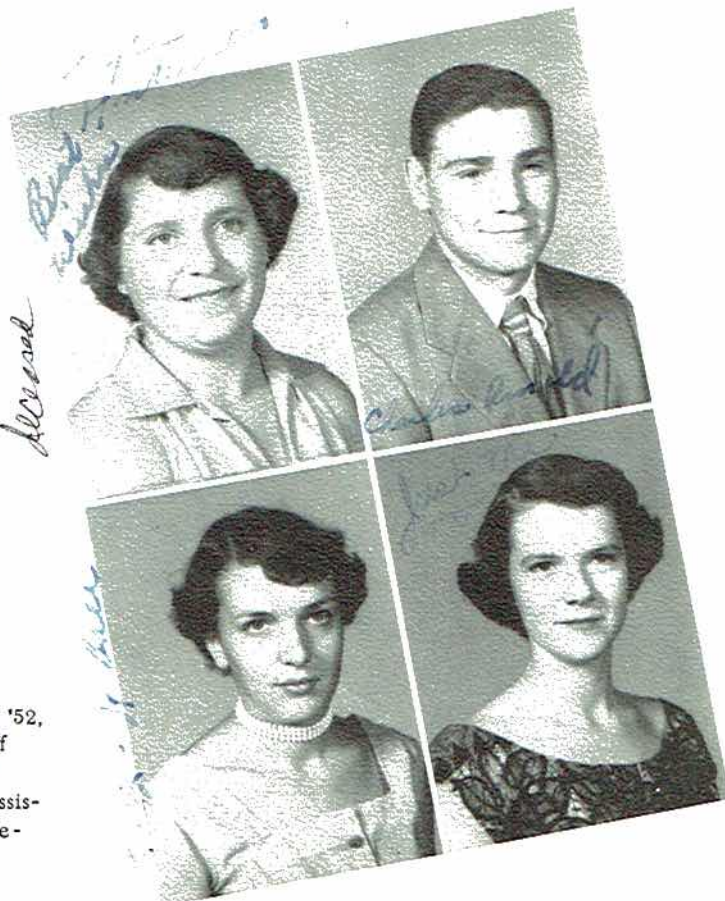
SUE ALLEN  
 Temperance Hill  
 Glee Club '54.

JOYCE ANDERSON  
 Scottsboro  
 Band '53, '54.

CHARLES ARNOLD  
 Scottsboro  
 F. F. A. '53, '54.

BETTYE JO BALL  
 Macedonia  
 F. H. A. '51, '52; Glee Club '52, '53.

ANN BARBEE  
 Scottsboro  
 F. T. A. '52, '53, '54, Secretary-Treasurer '52,  
 Treasurer '53, President '54; Wildcat Staff  
 '52, '53, '54, Assistant Editor '53, Feature  
 Editor '54; Reminder Staff '52, '53, '54, Assis-  
 tant Editor '53; Student Council '52, Secre-  
 tary-Treasurer '52; Prophet '54.



*deceased*

J  
C  
A

ELIZABETH BEARD  
 Dutton  
 F.H.A. '51, '52; Glee Club '53, '54; Treasurer  
 of Glee Club '54.

ALFRED BELLOMY  
 Pikeville  
 F.F.A. '52, '53; Glee Club '52, '53, '54.

BETTYE ROSE BERRY  
 Larkinsville  
 F.T.A. '52, '53, '54; F.H.A. '51; Glee Club  
 '54.

EDWIN BRITT *(deceased)*  
 Section  
 F.F.A. '51, '52; Photography Club '53, '54.

SHELBY BROGDON  
 Dutton  
 F.H.A. '52, '53; Glee Club '54.

CONDON CAMPBELL *deceased*  
 Scottsboro  
 Glee Club '52, '53; Wildcat '53, '54; F.T.A.  
 '53, '54; Reminder '53, '54; Class Will '54;  
 Vice-President Junior Class '53; F.T.A. -  
 Treasurer '54.



MARTHA CAMPBELL  
 Scottsboro  
 Reminder '54.

FRANCES ANN CAPERTON  
 Fackler  
 F.H.A. '51, '52, '53, '54.

FAYE CARTER  
 Dutton  
 F.H.A. '52; F.T.A. '52, '53, '54; Glee Club  
 '54.

MARY RUTH COFFEY  
 Scottsboro





JIMMY COOK  
Hollywood  
F.F.A. -County Vice President '52, '53,  
County President '53, '54; F.F.A. '51-'52,  
'52-'53, '53-'54.

BETTY JO DOLBERRY  
Larkinsville  
F.H.A. '52.



CAROLYN JEAN DOWNEY  
Section  
F.H.A. '52.

BETTYE DUDLEY *deceased 2013*  
Kyles



RACHEL EVETT  
Temperance Hill  
Photography Club-Secretary and Treasurer.

WILEY FINNEY  
Temperance Hill  
F.F.A. '52, '53, Secretary of F.F.A. '52, '54.

GAYLA FOSSETT  
Section  
F.H.A. '51, '52; Wildcat Staff '54.

CAROLYN GILLIAM  
Scottsboro  
Wildcat '49, '50, '51, '52, Associate Editor '53,  
Feature Editor '54; Band '52, '53, '54, Treas-  
urer '52, President '53, Sergeant '54; All  
State Band '53; Reminder Editor '54; D. A. R.  
Citizenship.

BARBARA JEAN GLASS  
Fackler  
F.H.A. '52, '54; Glee Club '52, '53.

FRANCES GOLD  
Scottsboro  
Band '52, '53, '54; Cheerleader '54; Reminder  
'52.



*deceased*

DIMPLE AKE GREEN  
Scottsboro  
F. H. A. '53, '54.

*deceased 12/92*



WANDA GRIFFIN  
Dutton  
F. H. A. '51, '52; Wildcat '53, '54; Reminder '53, '54.

MYRTLE GUFFEY  
Scottsboro  
F. H. A. '52; Glee Club '53; Photography '54.



BETTY FAY HANCOCK  
Scottsboro  
Glee Club '52, '53, '54; Sec. & Treas. of Glee Club '54; Reminder Staff '54.

HUGH HANCOCK  
Goosepond  
F. F. A. '52, '53, '54.



DAN HAYNES  
Macedonia  
Basketball '53, '53, '54; F. F. A. '52, '53, '54.

*deceased*



WILMA HILLEY  
Section  
F. H. A. Club '52.

JOYCE HODGES  
Scottsboro  
Glee Club '52; F. H. A. President '54; Cheerleader '52, '53; Head Cheerleader '53.

*deceased*



OLEN HOLCOMB  
Section  
Basketball '52, '53; F. F. A. '52, '53, '54.

LOUISE HOLLOWAY  
Scottsboro  
F. H. A. '52; F. T. A. '52, '53, '54.



JAMES HUBER  
 Scottsboro  
 Football '51, '52, '53; Football Co-captain '53;  
 Photography Club.

JOYCE IRVING  
 Scottsboro  
 Glee Club '54; Homecoming Queen '54.



SHIRLEY JENKINS  
 Scottsboro  
 Glee Club '52, '53-Accompanist; F. H. A. '52;  
 F. T. A. '52, '53, '54-Vice President; Student  
 Council '52.

ELLA JEAN JONES  
 Macedonia  
 F. H. A. '52.



JAMES KELLER *(deceased)*  
 Scottsboro

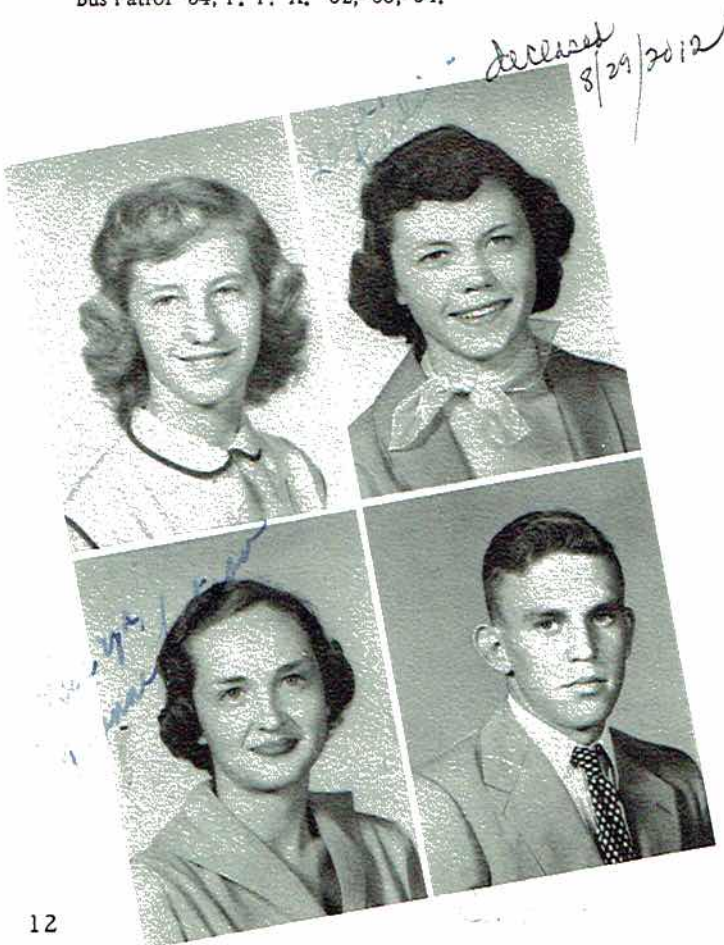
EUGENE KNIGHT *(deceased)*  
 Limrock  
 Bus Patrol '54; F. F. A. '52, '53, '54.

LA MERLE LANDS  
 Section  
 F. H. A. '54; Glee Club '52.

PAULINE LATHAM  
 Larkinsville  
 Band '52; F. H. A. '52; Wildcat '52.

YVONNE LETSON  
 Scottsboro  
 Majorette '52, '53; Reminder '54; Homecoming  
 Attendant '53; Glee Club '52; Wildcat '52.

J. B. LUSK *(deceased)*  
 Dutton  
 F. F. A. '52, '53, '54; Football '52, '53, '54.



BRASTEL MATTHEWS *deceased 2013*

Fackler  
F. F. A. '52, '53, '54.

DAVID MATTHEWS

Tupelo  
4H Club '52, '53, '54; Senior Countyleader of 4H  
Club '52; F. F. A. '52, '53, '54.

FLORA KATHERINE MATTHEWS

Hollywood  
Glee Club '52, '53; F. H. A. '52.

JOAN MATTHEWS

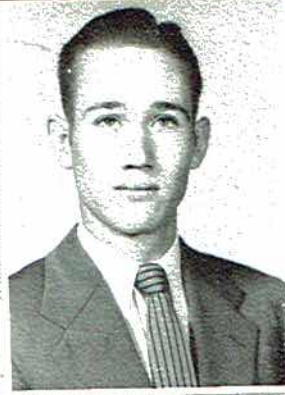
Larkinsville  
Band '51; F. H. A. '52, '53; Glee Club '54.

PAUL McCARVER

Cams  
F. F. A. '52, '53, '54.

JAMES McKENZIE

Dutton  
F. F. A. '52, '53, '54.



MARVIN MILLER

Larkinsville  
F. F. A. '52, '53, '54.

DOROTHY JEWEL NEELEY

Section  
F. H. A. '52; Glee Club '54.



ELOISE PARADISE

Woods Cove

JOY PARADISE *(deceased)*

Scottsboro  
Band '52, '53; Drum Major of Band '53; Twirler of  
Band '54; Glee Club '48.





BILLY CHARLES PERRY *deceased*  
 Dutton  
 Basketball '52, '53, '54; Football '51, '52, '53;  
 F. F. A. '52, '53, '54; "J" Club '53, '54.

AUBREY POCKRUS  
 Scottsboro  
 F. F. A. '52, '53, '54; Basketball '51; Football '51, '52, '53.

ELIZABETH PORTER  
 Scottsboro  
 Band '51, '52, '53, '54; Student Council '49, '51;  
 Wildcat Staff '51; Annual Staff '54.

MARY FRANCES PROCTOR *deceased 1992*  
 Scottsboro  
 Band '49, '50, '51; Student Council '52; Home-coming Attendant '52; May Queen Attendant '53;  
 Miss Jackson County High '53; Wildcat Staff '54;  
 Annual Staff '54.

CHRISTINE REED  
 Section  
 F. H. A. '52; Wildcat Staff '53, '54.

BILLIE MARIE ROBERTS *deceased*  
 Section  
 F. H. A. '51, '54.



LOUISE ROBERTS *deceased*  
 Section  
 F. H. A. '52, '53.

CHARLES ROBERTSON *(deceased)*  
 Dutton  
 F. F. A. '52, '53, '54; President of F. F. A. '54;  
 Football '51, '52; Band '51, '52; Glee Club '51, '52, '53.

SALLY SANDERS  
 Scottsboro  
 Glee Club '50, '52; F. H. A. '52, '54.

SHIRLEY FAYE SARGENT  
 Macedonia  
 F. H. A. '52; Cheerleader '54.



CAROLY  
 Scottsbor  
 Wildcat

JOHNNY  
 Section  
 F F A '5

WAYNE  
 Tupelo  
 F. F. A.

CHARLE  
 Scottsbor  
 Wildcat  
 '54, Fea  
 '53; Gle  
 '52, '53;  
 Editor '5  
 '52, '53;  
 Sergean

BARBAR  
 Section  
 F. H. A.

W. C.  
 Macedo  
 F. F. A.

CAROLYN SENTELL  
 Scottsboro  
 Wildcat Staff '51, '52, '53, '54.



*deceased*



JOHNNY SHAVERS  
 Section  
 F. F. A. '52, '53, '54; Football '52, '53.

WAYNE SHELTON  
 Tupelo  
 F. F. A. '52, '53, '54.

*deceased*

CHARLES SMITH  
 Scottsboro  
 Wildcat Staff '52, '53, '54-Photographer '53, Cartoonist '52, '53, '54, Feature Editor '53; Student Council '52, '53-Vice President '53; Glee Club '52, '53-Secretary '52, Treasurer '53; F. T. A. '52, '53; Reminder '52, '53, '54-Business Manager '54, Art Editor '54; Photography Club '54-President '54; All State Band '52, '53; Band '52, '53, '54-Band Manager '53, President '54, Sergeant '54, Drum Major '54; Official Flag Raiser '54.



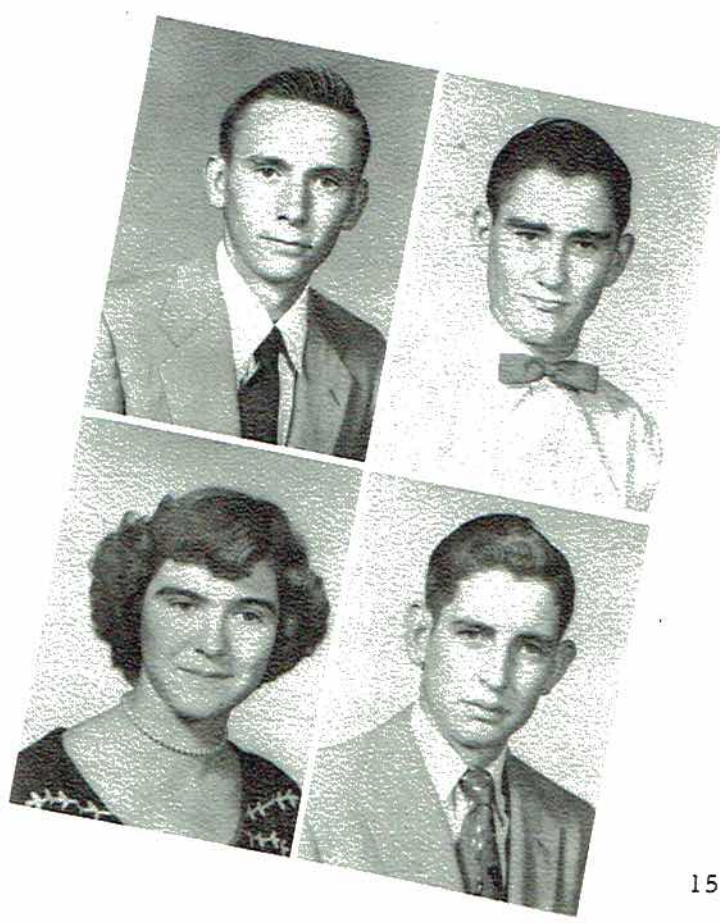
BARBARA SUE SPARKS  
 Section  
 F. H. A. '52, '53; Glee Club '53, '54.

W. C. SPARKS  
 Macedonia  
 F. F. A. '52, '53, '54.

*deceased*



*deceased 1954*



JIMMY SPEARS *deceased*  
 Dutton  
 F. F. A. '52, '53, '54; Football '52, '53.

CHARLES STEWART  
 Scottsboro

JANETTE STONER  
 Section  
 F. H. A. '52-Reporter '52; Glee Club '53; Wildcat Staff '54; Reminder Staff '54.

DONALD STOVER  
 Dutton  
 F. F. A. '52, '53, '54.

*died 2003*



DALE TRAMMELL  
 Scottsboro  
 Student Council '52, '53, '54; President Student Council '54; President Class '53; "Reminder" '54; Football '53; Photography Club '54; J-Club '54.

LINDSAY VAUGHT *(deceased)*  
 Scottsboro  
 Band '50, '51; F.F.A. '54.



HERBERT WEEKS  
 Scottsboro  
 F.F.A. '50, '51, '53.

KENNETH WELCH *(deceased)*  
 Hollywood  
 F.F.A. '52, '53, '54.



DONALD WILBORN  
 Scottsboro

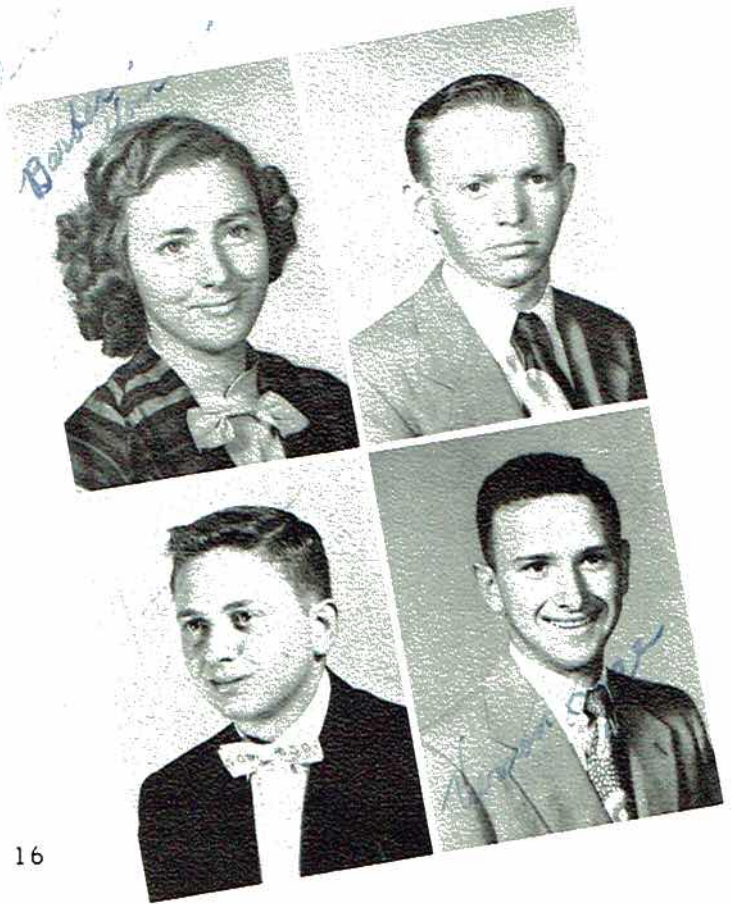
JANE WILHELM  
 Woods Cove

BARBARA WOMACK  
 Dutton  
 Glee Club '54; F.H.A. '53.

JAMES WOOSLEY  
 Scottsboro  
 F.F.A. '52, '53, '54.

*died in 1988*  
 SAM FRED GROSS  
 Scottsboro

VERNON HOGE  
 Tupelo  
 F.F.A. '52, '53, '54.

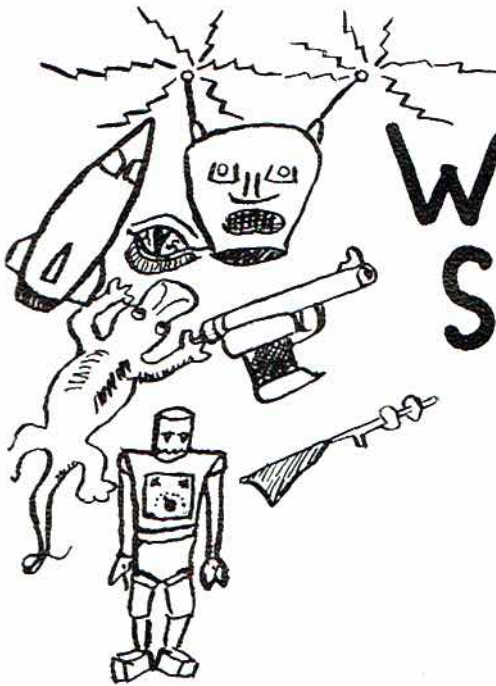




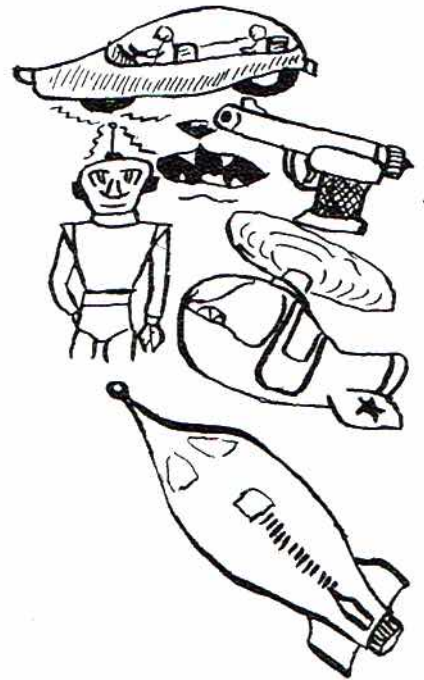
SUE McLAUGHLIN  
Larkinsville  
F.F.A. '52, '53, '54; Glee  
Club '51.



W. C. WALKER  
Scottsboro  
Basketball '52, '53, '54.

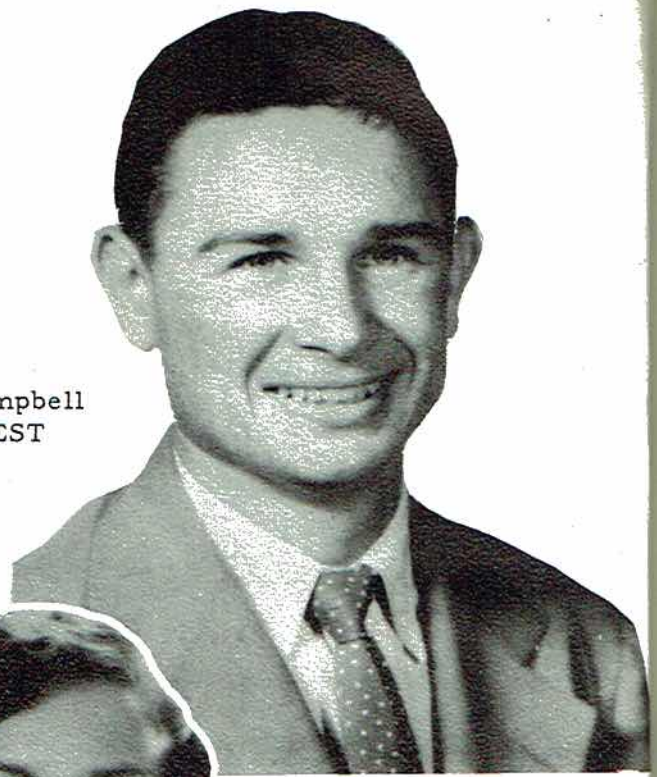


Write Your  
Space Name  
HERE

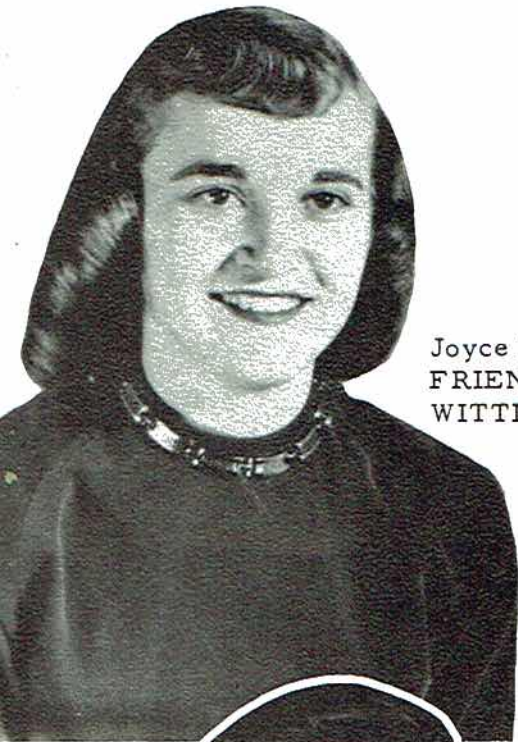


# SUPERLATIVES

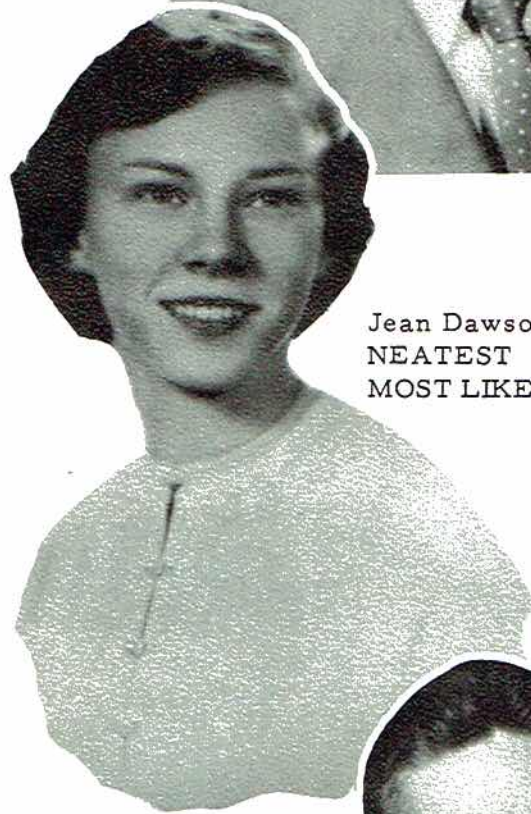
Condon Campbell  
FRIENDLIEST



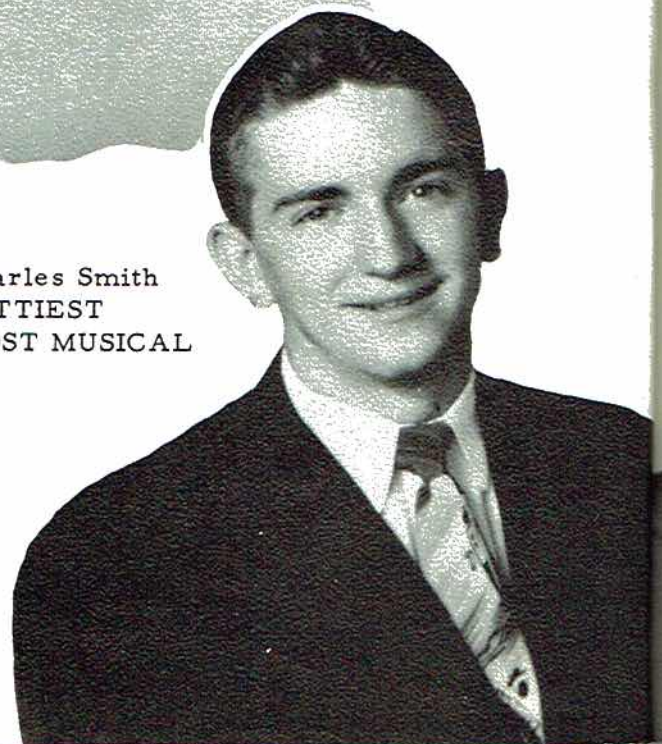
Joyce Hodges  
FRIENDLIEST  
WITTIEST



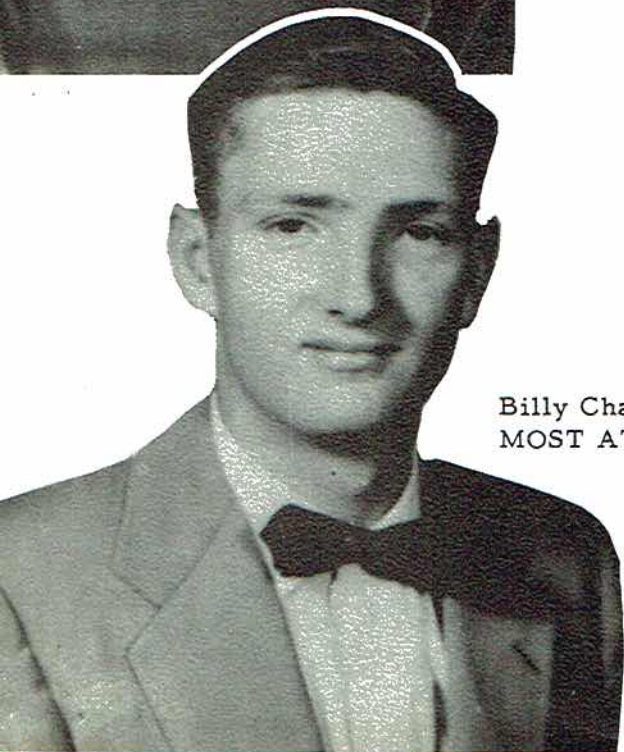
Jean Dawson  
NEATEST  
MOST LIKELY TO SUCCEED

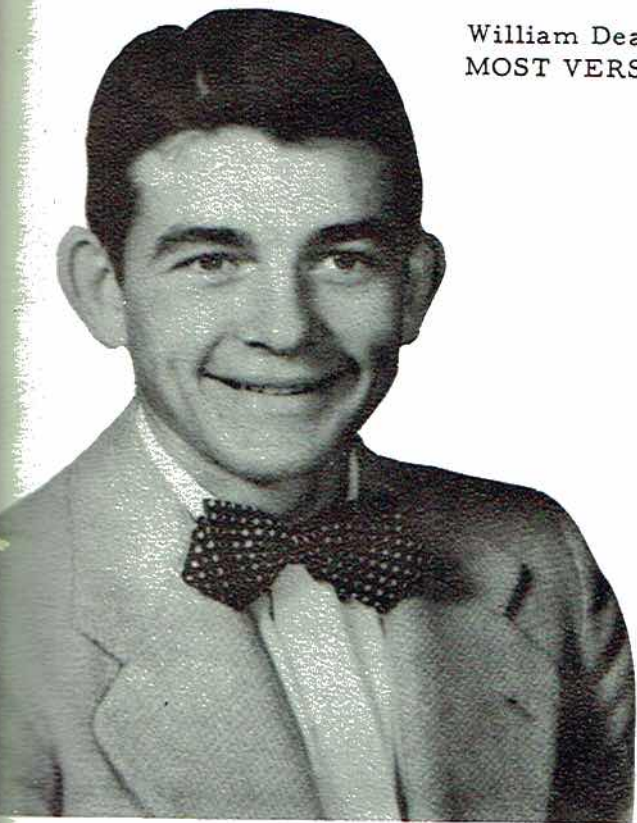


Charles Smith  
WITTIEST  
MOST MUSICAL



Billy Charles Perry  
MOST ATHLETIC

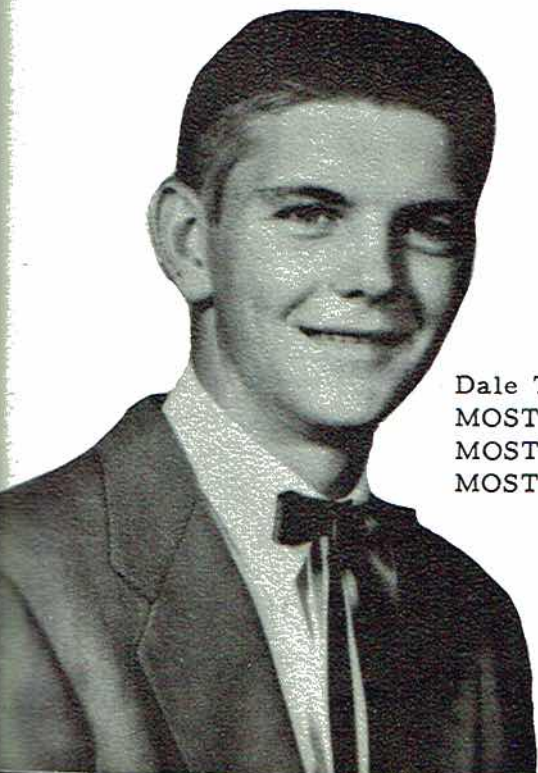




William Dean  
MOST VERSATILE



Mary Frances Proctor  
PRETTIEST  
MOST POPULAR



Dale Trammell  
MOST HANDSOME  
MOST POPULAR  
MOST LIKELY TO SUCCEED

Carolyn Gilliam  
MOST MUSICAL  
MOST VERSATILE





# LAST WILL AND TESTAMENT CLASS OF '54

We, the Senior Class of 1954, of Jackson County High School, Scottsboro Alabama, being of sound bodies and learned minds, hereby solemnly declare this to be our last will and testament.

To the faculty we bequeath our appreciation and everlasting remembrance for their patience and faithfulness in seeing us through the storm of the last six years.

For Mr. Couch we leave our undying gratitude for the guidance and counselling we have received from him during the last six years.

To the semi-dignified Juniors we, the dignified (?) seniors, leave our front seats in assembly and individually to the following we do humbly and solemnly bequeath:

I, W. C. Walker, on receipt of these barbells, having used them to the greatest extent of my ability pass them on to Edgar Arnold.

We, Johnny Shavers and Martha Campbell, leave our inseparableness to Scotty Ray and Sandra Campbell.

I, Ann Barbee, bequeath my unquenchable exuberance to Johnnie Gross.

I, Sally Sanders, will to Gladys Pace my ability to get a boy friend.

I, Edwin Britt, will my slow ways to Delbert Lackey and William Lingerfelt.

I, Jane Hodge, give my love for dancing to Patsy Hall.

I, Herbert Weeks, bequeath my "exceeding" height to Esmond Shelton and Albert Pace.

We, Joyce Irving and Yvonne Letson, will our "3-D Assets" to Bettye Thompson.

I, Charles Smith, will my interest in tinkering with radios to Paul Swaim.

I, Carolyn Gilliam, will my love for band to L. D. Garner.

I, Elizabeth Porter, leave my love for jokes to Scottie Watson.

We, Alfred Bellomy, Ray Smith, and Billie Marie Roberts, bequeath our good manners and nice ways to Willis Britt, Jerry Brown, Bobby Myers, Jane Staton, and Frances Roach.

We, Jimmy Cook and Wiley Finney, leave our ability to drive teachers batty to Wayne Hammonds, Scott Harpor, and Joe Arnold.

I, Barbara Glass, leave my storehouse of humorous stories to Sarah Gross and Louise Foster.

I, Jean Dawson, bequeath my studious ways to Joyce Dodson and Mildred Dean.

I, Ollie Crawford, will my love for a good time to Bob Shook.

I, William Dean, leave my football prowess to Bud Precise, Charles Hass, and Clarence King.

I, James Huber, "Head Chemist," leave my wit to Billy Owens and William Bentley.

I, Sam Fred Gross, leave my love of driving to Jimmy Bray.

We, Olen Holcomb and Dan Haynes, will our basketball ability to Arthur Beard, Billy Keller, and Comer Jacobs.

We, Wilma Hilley and Louise Holloway, will our quiet ways to Mavis Lusk, Geneva Berry, and Marie Bynum.

We, James Keller and Hugh Hancock, will our nonchalant ways to Riley Westmoreland, Bobby James, Bobby Dukes, and Franklin Evett.

We, Christine Reed and Gayla Fossett, bequeath our giggly ways to Lois Ann Snoddy, Jesse Mann, and Antha Jo Wilkerson.

We, Joyce Hodges and Shirley Knopps, bequeath our athletic ability to Reba Nevils, and Hispanola Bellomy.

I, David Matthews, will my ability to capture women's hearts to David Ashmore.

I, Myrtle Guffey, will my love for popular music to Joyce Baty.

I, Betty Fay Hancock, will my book, Ten Ways To Catch A Man, to Mildred Roberts.

I, Dale Trammell, leave my dadgum stubbornness and my booth at Ann's to "Satch" Kirby.

We, Frances Gold and Mary Frances Proctor, will our dignity to Martha Jane Keeton and Gene McCutchen.

We, Joyce Anderson and Wanda Griffin, will our seats in typing to Mary Alice Thomas and Marilyn Ryan and Janie Woods.

I, Shirley Jenkins, leave to Linda Faye Henshaw my ability to attract Baptist preachers.

I, Bettye Jo Ball, will my height to Bonnie Gann.

We, Charles Arnold, Billy Charles Parry, Charles Robertson, and Rudolph Allen, will our mischievous ways to Fred Ake, Raymond Edwards, Rayford Knight, Rayford Martin, Raymond Smart, Bill Riley, and Jack Swearengin.

We, Shelby Brogdon, Betty Jo Dolberry, and Rachael Evett, bequeath our incessant quietude to Burma Dell Allen, Shriley Beard, Shirley Brandon, Bonnie Paradise, and Cecil Blackwell.

We, Louise Roberts, Sue McLaughlin, and Ella Jean Jones, leave to Shirley Baugh, Carolyn Brazelton, Nell



Hamilton, Mary Elizabeth Shirey, Rebecca Nichols, and Jean Staton our love for the Future Homemakers of America.

We, Vernon Hoge, Eugene Knight, Kenneth Welch, will our physical education ability to Wayne Jones, Wilson Wilburn, Kenneth Chandler, and Lee Germany.

I, Carolyn Downey, will my taste in clothes to Betty Jean Reed.

We, Lindsay Vaught and Paul McCarver, will our Spanish grades (C;C) to David Womack and Robert Gross.

We, Donald Wilbourn and James Woosley, will our interest in movie picture houses to Garland Frazier.

We, Charles Stewart, J. B. Lusk, and Jimmy Spears, will our exceeding height to Samuel Smart, Harold Carter, James Middleton, and Roy Johnston.

We, Marvin Miller and Wayne Shelton, give our ability to stay small to Hugh Bellomy and Roy Young.

To Thurman Killian, I, Sue Allen, leave my everlasting affection.

We, Dimple Green and Barbara Sparks, bequeath our ability to land the biggest catch of all poor fish to Billy Ruth Womack and Carolyn Green.

We, Flora Matthews and Dorothy Neely, will to Wanda Green our red hair.

We, W. C. Sparks and James McKenzie, leave to Kenneth Jarrel, Latham McCutchen, and Arnold Little our boundless energy.

I, Joy Paradise, will my love for jitterbugging to Joan Thomas.

I, Jane Wilhelm, will to Betty Ann Keasling my book on "How to Diet in Ten Easy Lessons."

We, Carolyn Sentell and Frances Caperton, will our constant jabber to

Gladys Loyd and Janie Myers.

We, Eloise Paradise and Barbara Womack, leave our inquisitive expressions to Betty Pope and Syble McCutchen and Margaret Nix.

We, La Merle Lands and Pauline Latham, leave our ready wit to Imogene Hancock, Joyce Henderson, and Mona Sue Hester.

We, Donald Stover and Brastell Matthews, will our indifference to book larnin' to Jack Bryant and Paul Holcomb.

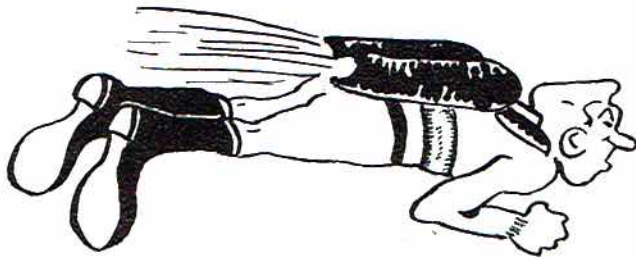
We, Joan Matthews and Janette Stoner, will our back seat in class to Barbara Matthews, Wilma Ivey, and Caldona Wininger.

We, Faye Carter and Mary Ruth Coffey, will our winning smile to Marlie Whitaker and Rena Christa.

We, Betty Rose Berry and Bettye Dudley, leave our agreeable ways to Delores Ann Haynes, June Stewart, and Betty Jean Welch.

I, Condon Campbell, leave.





## Prophecy

I have looked at my watch and there is an hour and a half before my rocket takes off for my first trip to Mars. I'll spend that time writing this down to have something to do with my hands. Rudolph Allen, the rocket station manager, has given me full use of his unique world-wide television hook-up. His private secretary, Betty Jo Dolberry, is going to transcribe everything I say.

As I turn the various knobs, familiar scenes flash before my eyes. Now I recognize the people.

A research laboratory owned and managed by David Matthews, Charles Arnold, and James Keller is one of the most conspicuous buildings on the one hundred fifty inch screen. Inside this building such skilled technicians as Shelby Brogdon, Joyce Anderson, Kenneth Welch, Ella Jean Jones, and Donald Wilbourn are working on a plan to increase the velocity of sound waves. They have performed numerous successful experiments with the co-operation of James McKenzie and Donald Stover, Hydrogen-jet aviators. This laboratory also houses the private study of Ray Smith who is presently engaged in the development of a delicately constructed machine which will make it possible to pipe water to the space stations erected between the earth and Mars. Credit for

the perfection of these space stations is due Charles Stewart who has become a millionaire from his stratospheric constructions.

In the innermost part of a huge hospital erected on wheels which can be easily moved from place to place by atomic power Condon Campbell is performing one of his most recent medical discoveries of bisecting Siamese twins so they can live normal lives. He is ably assisted by Wilma Hilley, Flora Matthews, Carolyn Downey, Louise Roberts, Pauline Latham, and Dorothy Neely, his ladies in white. The hospital dietitian staff includes Barbara Womack, Joan Matthews, Rachael Evett, and Billie Marie Roberts.

The scene shifts to a large amphitheater where Christine Reed, Yvonne Letson, Gayla Fosset, and Joyce Irving are modeling evening apparel designed by the world-famous fashion creator, Joy Paradise. At the piano I find Carolyn Sentell who is responsible for the essential musical selections at this universal fashion review. Several of the larger department store buyers--Sallie Sanders, Betty Cotten Hancock, Martha Campbell, and Elizabeth Porter--are making their selections.

Glancing at the campus of Jackson County High, I see a new building made

entirely of glass and covering two acres constructed by the reknown architect, Edwin Britt. The school buses look more like helicopters than anything. The principal, Jane Hodge, is overseeing a class in aeronautics taught by Sue McLaughlin and Betty Rose Berry, two expert aviators. Frances Caperton and Faye Carter are teaching the girls to prepare meals from food primarily prepared in table form. Teaching the use of atomic recorders, transcribers, and translators for commercial use are Louise Holloway, La Merle Lands, and Wanda Griffen. The athletics department is headed by Jimmy Spears, Olen Holcomb, and Dan Haynes. Teaching modern physics is Johnny Shavers.

Changing to the African channel, I see the almost extinct jungles of Africa. Alfred Bellomy is teaching a class for the few remaining uneducated natives. Another American missionary, Carolyn Gilliam, has just made her daily landing in her small jet, flown by Brastel Matthews, to teach a course on how to make hydrogen bullets. Her scientist consorts are Ollie Crawford, Marvin Miller, and James Woosley.

The scenes shift back to the North American continent, and I see a gay inn scene from Carmen. Playing the part of the beautiful, dark gypsy, Carmen, is Mary Frances Proctor, a Broadway star made famous by her manager, Charles Smith.

In a magnificent stadium I see a huge throng of people. James Huber has just made a touchdown for the Army football team. Sitting on the sidelines, I see the manager of the Navy team,

William Dean. Looking closer, I see J. B. Lusk and Aubry Pockrus, general managers of the Navy team. Broadcasting this game is W. C. Sparks, international sports broadcaster.

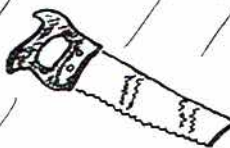
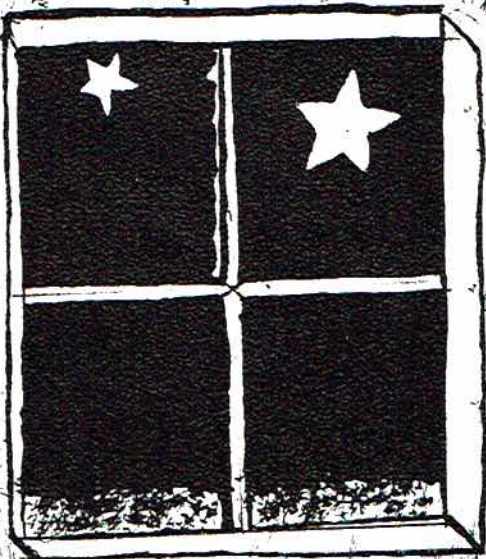
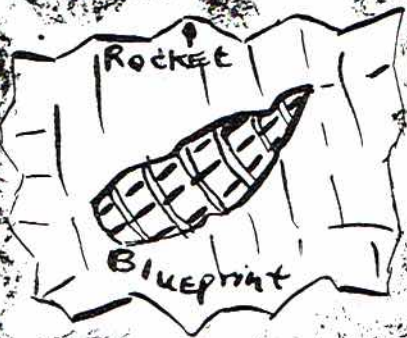
In the office of Scottsboro's leading newspaper, which is televised three times each day, I see Barbara Sparks, Editor-in-chief, and Joyce Hodges, Business Manager. In the producer's department I see Charles Robertson, Hugh Hancock, Eugene Knight, and Paul McCarver. The page being televised now is a game of the Globe-Trotters, starring Billy Charles Parry and W. C. Walker.

In the largest bacteriological laboratory in the world, which is owned and operated by Jimmy Cook, Vernon Hoge, and Wiley Finney, I see Myrtle Guffey, Betty Dudley, Jane Wilhelm, Dimple Green, and Shirley Sargent Knopps experimenting with Jean Dawson's latest bacteriophage.

Mining engineer, Dale Trammel, assisted by Wayne Shelton, Lindsay Vaught, & Herbert Weeks, have their secretaries, Jeanette Stover, Sue Allen, Betty Ball, Mary Ruth Coffee, and Eloise Paradise, hard at work figuring the compound interest on their fortune acquired through their vast production of uranium.

Sam Fred Gross, tenor soloist, accompanied by concert pianist Shirley Jenkins is giving a concert for Frances Gold who has recently married one of the Rockefeller heirs.

I, Ann Barbee, in the year of 1974 leave this record of the accomplishments of the class of 1954 to be filed in the Department of Archives of Jackson County High School.



# JUNIOR CLASS

Betty Thompson - Treasurer  
 Scott Harper - President  
 Jerry Brown - Vice President  
 Marlie Whitaker - Secretary



Fred Ake  
 Burma Dell Allen  
 Edgar Arnold  
 Joe Arnold



David Ashmore  
 Joyce Batey  
 Shirley Baugh  
 Arthur Beard



Shirley Beard  
 Virginia Beard  
 Hispanola Bellomy  
 Hugh Bellomy



William Bentley  
 Geneva Berry  
 Cecil Blackwell  
 Shirley Brandon



Jimmy Bray  
 Carolyn Brazelton  
 Willis Britt  
 Jack Bryant



Marie Bynum  
 Sandra Campbell  
 Harold Carter  
 Kenneth Chandler



Mildred Dean  
 George Dodson



# JUNIOR CLASS

Bobby Dukes  
 Raymond Edwards



Franklin Evett  
 Louise Foster  
 Garland Frazier  
 Bonnie Gann



L. D. Garner  
 Lee Germany  
 Billy Golf  
 Carolyn Green



Wanda Greene  
 Johnnie Gross  
 Robert Gross  
 Sara Gross





James Ed Hall  
Patsy Hall  
Nell Hamilton  
Imogene Hancock



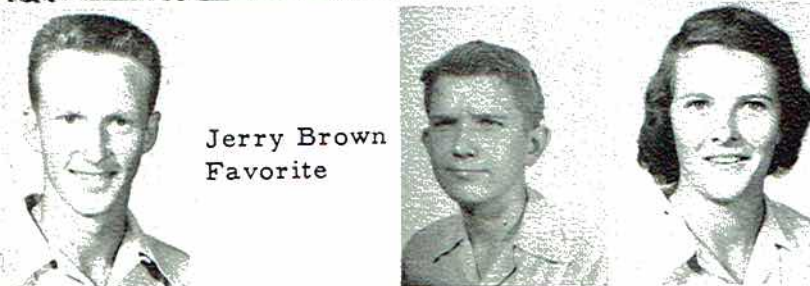
Charles Hass  
Delores Ann Haynes  
Joyce Henderson  
Linda Henshaw



Sara Gross  
Favorite

Mona Sue Hester  
Doris Hicks

# JUNIOR



Jerry Brown  
Favorite

Paul Holcomb  
Wilma Ivey



Comer Jacobs  
Bobby James  
Kenneth Jarrel  
Roy Johnston



Wayne Jones  
Betty Ann Keasling  
Martha Jane Keeton  
Billy Keller



Clarence King  
Billy Jack Kirby  
Rayford Knight  
Delbert Lackey

Arnold Little  
 William Lingerfelt  
 Gladys Loyd  
 Mavis Lusk



Jessie Mann  
 Rayford Martin  
 Barbara Matthews  
 James Middleton



Charles Miller  
 Gracie Mount



# CLASS

Bobby Myers  
 Janie Myers



Gene McCutchen  
 Latham McCutchen  
 Syble McCutchen  
 Reba Nevils



Rebecca Nichols  
 Margaret Nix  
 Billy Owens  
 Albert Pace



Bonnie Paradise  
 Rachel Pitts  
 Betty Pope  
 Bud Precise







Rosa Precise  
Scotty Ray  
Betty Jean Reed  
Wesley Reed

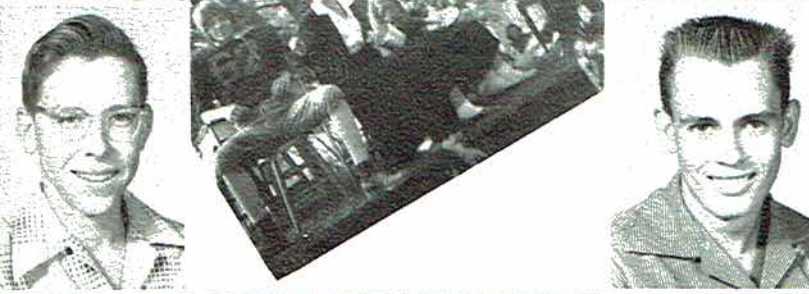


Bill Riley  
Frances Roach  
Mildred Roberts  
Marilyn Ryan



Esmond Shelton  
Mary Elizabeth Shirey

# JUNIOR CLASS



Bob Shook  
Raymond Smart



Samuel Smart  
Lois Ann Snoddy  
Jane Staton  
Jean Staton

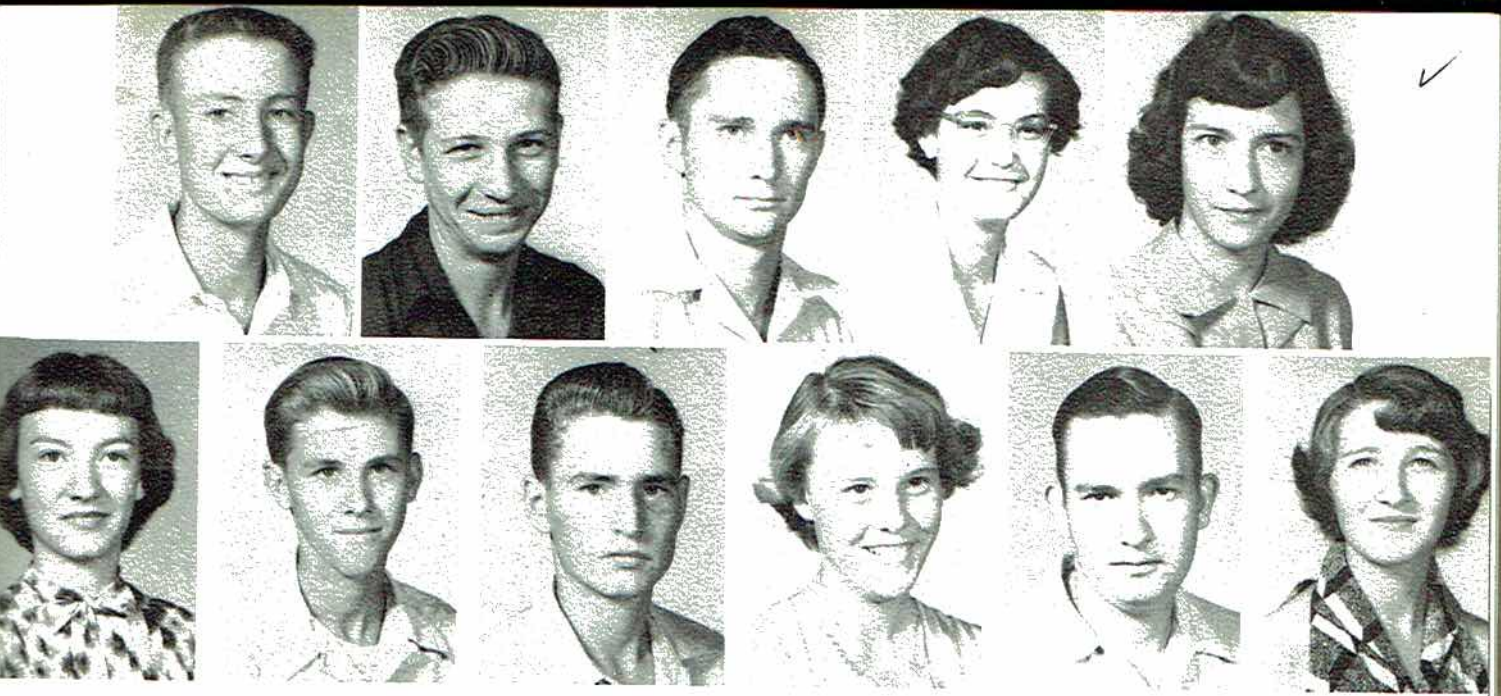


June Stewart  
Paul Swaim  
Jack Swearingin  
Joan Thomas



Mary Alice Thomas  
Donnie Walden  
Scotty Watson  
Betty Jean Welch





Riley Westmoreland Pete White Wilson Wilborn Antha Jo Wilkerson Caldonna Winger  
 Billy Ruth Womack David Womack Grady Wooden Janie Woods Roy Young Rena Christa

## MISPLACED SENIORS



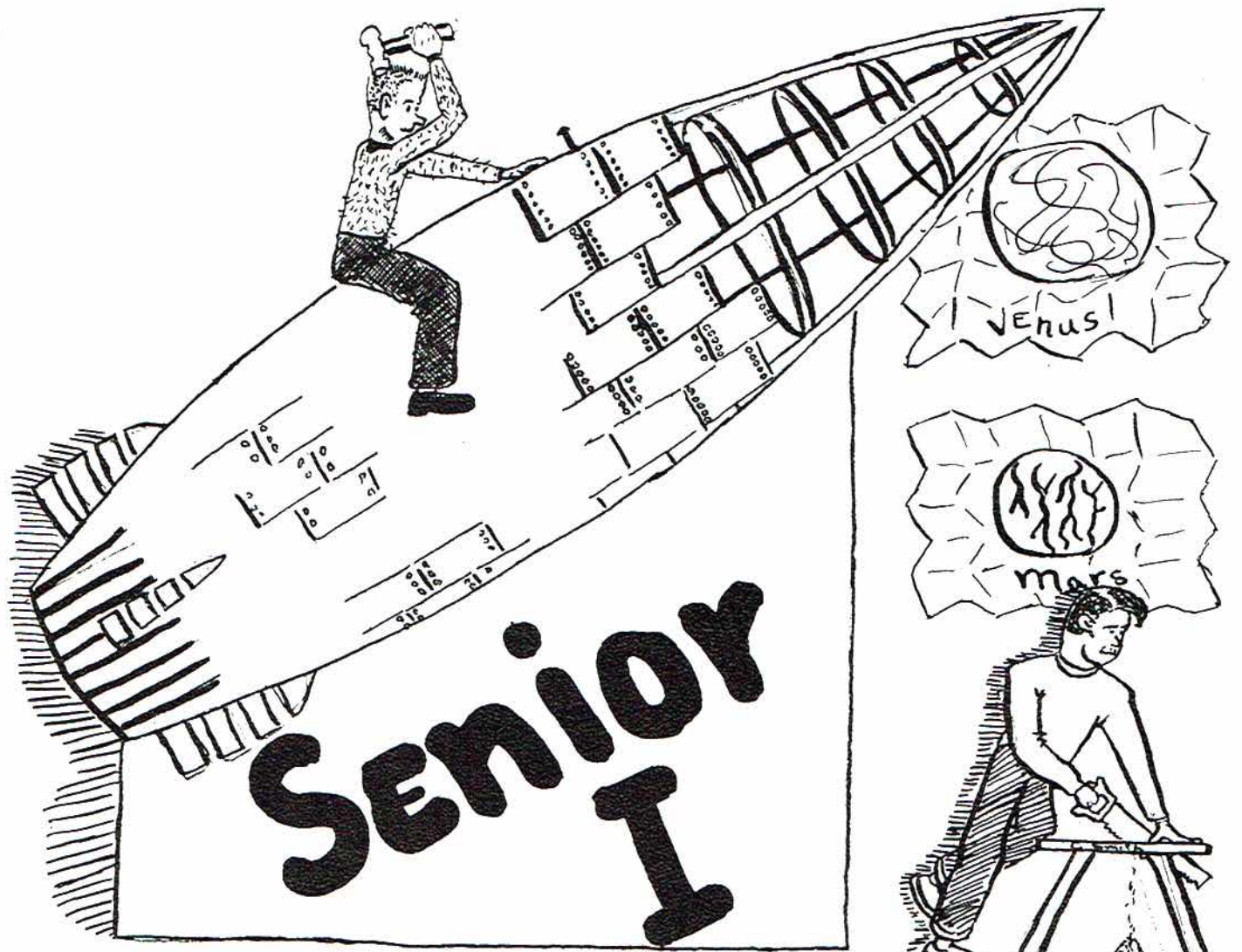
Lindsay Vaught



Charles Robertson



Alison Hodges  
 Class of '71



Hugh Stewart  
Class Favorite



F. F. A.

FIRST ROW: E. Evans, G. Clemens, W. C. Roach, C. E. Ferguson, R. Hilley, B. Middleton. SECOND ROW: S. Hogue, E. Stone, N. Gross, R. Johnson, S. Wilson, J. A. Vaught, H. Bates, W. Hancock, J. Griffith, M. Brannon, G. James. THIRD ROW: Mrs. Armstrong, F. Sharp, S. Medlock, M. Schultz, S. Allen, W. Creed, S. Townson, W. Hammons, E. Whitaker, A. P. Shelton, J. S. Puckett, M. Wilkerson. FOURTH ROW: J. Campbell, C. Bryant, J. Luttrell, A. B. Culpepper, R. Skelton, S. Robertson, D. Jacobs, J. Rogers, J. D. Snodgrass, R. Clark, H. Lingerfelt. CAMERA SHY: Franklin Tubbs, Boyd Brown, Rayford Clark, Billy Holcomb, Katie Lou Womack, Carol Hays.



F. H. A.

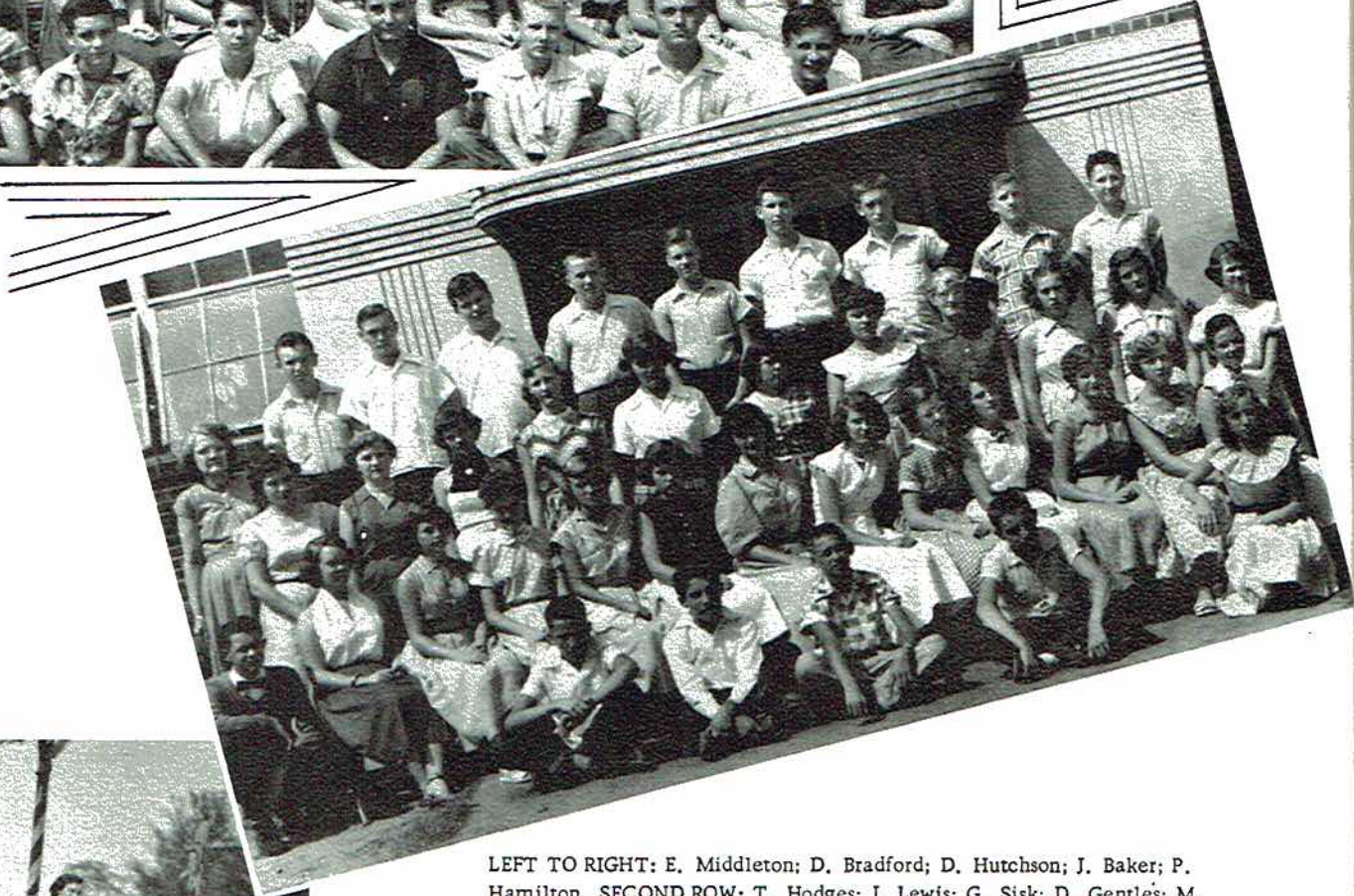
FIRST ROW, LEFT TO RIGHT: J. Garner, B. Culpepper, A. Dudley, J. B. Lusk, A. McKenzie, H. Stewart. SECOND ROW: S. F. Atchley, E. R. Hancock, M. J. Machen, D. Allen, H. Russell, P. McGriff, I. Hall, M. Wallace, J. Welborn, J. Bellomy. THIRD ROW: S. M. Sanderson, N. J. Wann, F. A. Wright, K. McCormick, S. Machen, I. Reed, B. J. Isbell, J. A. Kennamer, B. S. Hastings, W. J. Williams. FOURTH ROW: Mr. Page, M. Hancock, J. Johns, J. Ayers, B. J. Proctor, S. L. Stone, T. Chandler, L. M. Wilkerson. CAMERA SHY: Wayne Parks, Franklin Talkington, Benny Berry, Patricia Chambers, Edith Winkles.



Harriet Bates  
Class Favorite

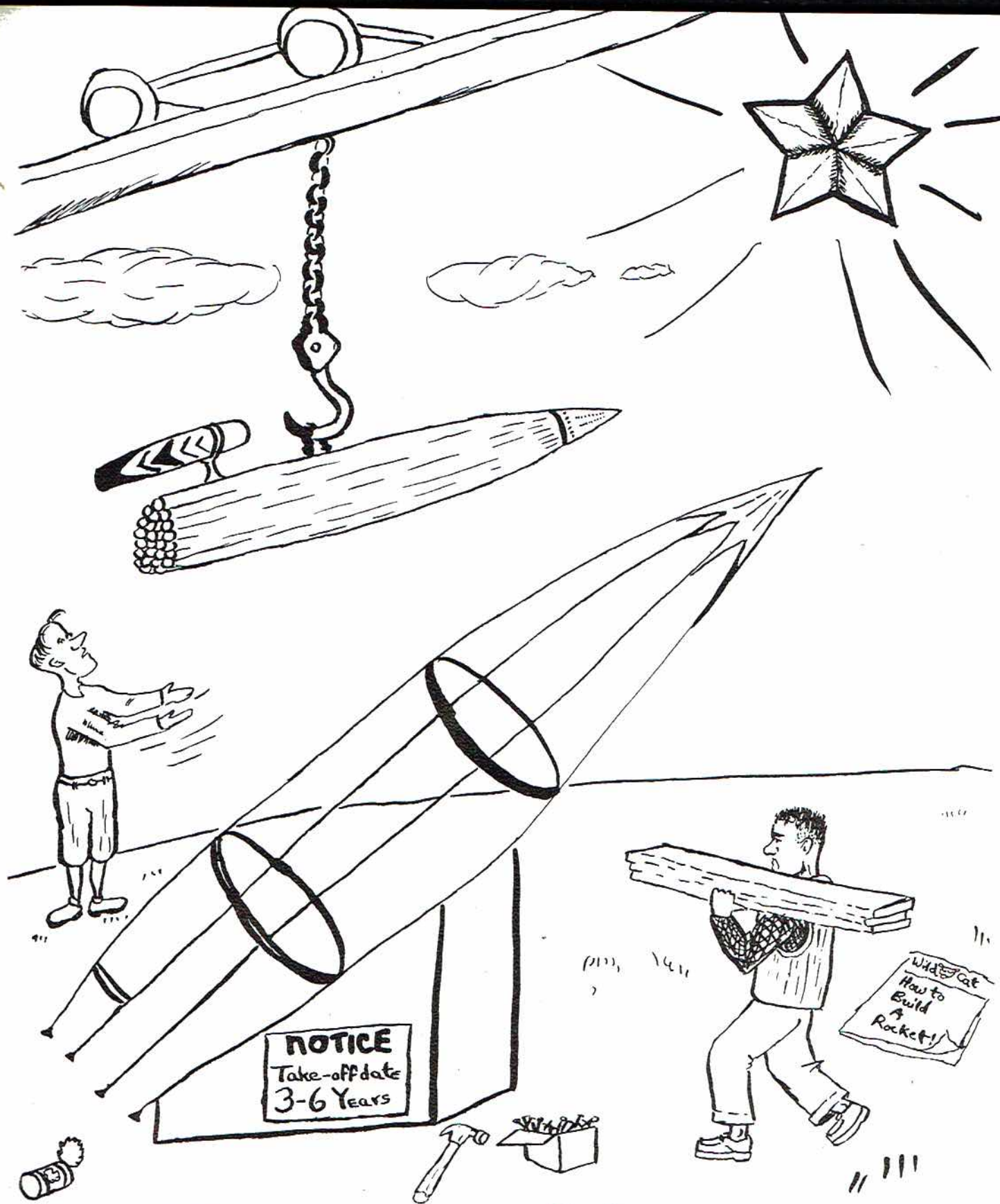
Max Buff  
 Student Council  
 Representative

FIRST ROW: T. Dean; J. Dukes; H. T. Kirby; D. Patterson; B. Porter; H. Goolsby; F. Myers. SECOND ROW: O. Bradford; H. Howard; V. Brandon; G. Jones; T. R. Hubbard; L. Davis; R. F. Phillips; A. M. Cloud; E. Moore. THIRD ROW: B. Watson; B. Allen; B. K. James; N. M. Knopps; B. J. Chandler; M. L. Bradford; L. McKee; S. Wilson. FOURTH ROW: G. Stone; B. Swearngen; M. Buff; B. J. Reed; D. Inglis; O. B. Phillips; R. Downs; J. R. Sparkman; J. Crawford; Mr. Phillips. CAMERA SHY: Mary Ann Smith, Patsy West, Louise Gillispie.



Home Coming-Float

LEFT TO RIGHT: E. Middleton; D. Bradford; D. Hutchison; J. Baker; P. Hamilton. SECOND ROW: T. Hodges; J. Lewis; G. Sisk; D. Gentles; M. Sparks; E. Bradford; E. Smalley; P. Thomas; L. Hall; R. Tighe; B. Mitchell; L. Clement; E. McClure. THIRD ROW: J. Beard; B. Jones; C. Killian; W. Staton; R. Shelton; W. Patterson; J. Inglis; M. R. Dunn; S. Harper; B. Barclay; S. Yarbough. FOURTH ROW: Miss Porter; F. Laudermilk; L. Cornelison; B. Miller; J. Nix; L. Cody; J.C. Roden; J. Winninger; J. Bolding; B. York. CAMERA SHY: Ronnie Hess, Charlise Gilliam, Stella Alice Word, Millie Mammon, Wayne Simms, Viola Haas.



# ♦ Junior High ♦

FRONT ROW, LEFT TO RIGHT: R. McLaughlin, A. James, N. Shelton, B. Wilbourn, V. Bel-  
 vy. SECOND: C. Dunn, J. McCoy, L. Southard, L. Hasting, G. Summer, M. Weeks, P.  
 Whitehead, V. Weeks, B. Miller, M. Arnold, R. McCoy. THIRD: Mr. Sloan, W. Nix, B.  
 ter, C. Necklaus, M. Holloway, M. Swaim, B. Benson, D. Rich, A. Potter, S. McCoy,  
 Miller. FOURTH: J. Evans, H. Tanner, V. Hodges, W. Allen, J. Bradford, L. Evans,  
 Brandon, J. Brandon, B. King, B. Bradford, C. Hancock, Q. Paradise. CAMERA SHY:  
 Marie Jean Smith, Bobby Driver, Kendall Martin. OFFICERS: Pres., Wallace Allen; V. Pres.,  
 Dell Nix; Sec. -Treas., Pauline Whitehead.



Bobby Hodges  
 Favorite



SS  
 F  
 7

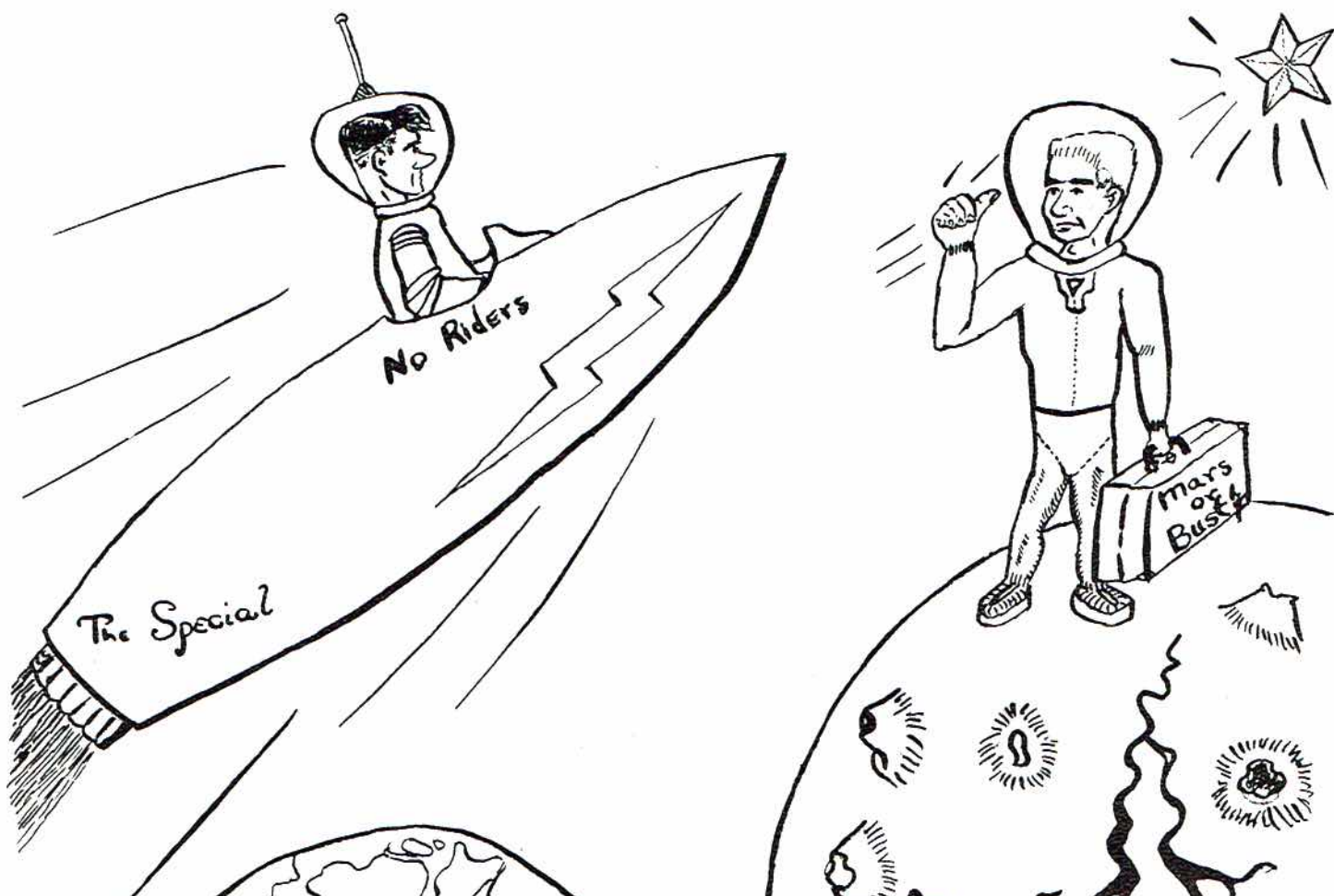


Margaret Jo Swaim  
 Favorite

FRONT ROW, LEFT TO RIGHT: E. Tubbs, H. Anderson, G.  
 Reed, V. Arnold, D. Campbell, T. Hastings, H. Hall.  
 SECOND: B. Treece, E. Smith, E. Westmoreland, C.  
 Dobbs, B. Wheeler, M. Berry, B. Allen, K. Wilkerson, T.  
 Woolsley, M. Potter, L. Ashmore. THIRD: W. Johns, J.  
 Nevils, M. Hall, J. Inglis, B. Pritchett, P. Bryant, R.  
 Reed, S. Allen, F. Heal, S. West, Mrs. Hodges. FOURTH:  
 J. Dean, T. Mitchell, G. Dodson, D. McGee, W. Latham,  
 D. Lovell, B. Tanner, F. Goodowens, B. Word, L. Pender-  
 grass, B. Bulman.



FIRST ROW, LEFT TO RIGHT: B. Gentles, B. Stewart, P. Boykin, A. Gardner, B. Davis, S. Schmolter. SECOND ROW: L. Sebring, A. Sharp, P. Rodgers, K. Hodges, J. Clemens, P. Snoddy, M. Barbee, N. Tally, F. DeArmond, K. Kennamer, A. McCord, A. Arendale. THIRD ROW: L. Belomy, N. George, B. Dolberry, O. Lackey, J. Allen, J. Keel, S. Campbell, B. Couch, P. Proctor, D. Beddingfield, C. Campbell, C. Selvage, B. Loyd, Mrs. Jones. FOURTH ROW: A. Potter, J. Cunningham, P. Wann, B. Keeble, H. Childress, B. Sanders, B. Hodges, J. Carter, V. Elliott.





FRONT ROW, LEFT TO RIGHT: Allison, Baker, Woodall, Bulman, Hethcoat, Kerr.  
 2nd ROW: Mount, McCampbell, Phillips, Bradford, Wright, Murphy, McKee, Treece,  
 Farr, Judge, Thomas. THIRD ROW: Allen, Newell, Muse, Payne, Walden, Olinger,  
 Sisk, Manning, Hollis, Olinger, Mrs. J. A. Lee. FOURTH ROW: Guthrie, Stultz,  
 Rodgers, Woodall, Green, Webb, Mitchell, Talley.



Lonnie Tipton  
 Favorite



CLASS  
 OF  
 '58



Barbara Gilliam  
 Favorite

FRONT ROW: Wallingsford, Skelton, Scott, Hastings, Hodges, Let-  
 son. ROW 2: Evans, Westmoreland, Pace, Sizemore, Finney, Ash-  
 more, Gilliam, Hodge, Lusk, Bogue, Tate. ROW 3: Wann, Cun-  
 ningham, Evans, Watson, Smith, Lutrell, Ott, Ambrester, Cloud,  
 Haynes, Wales, Miss Finney, Boles. ROW 4: Scott, Hall, Turner,  
 Smart, Kennamer, Trammell, Beard, Webb, Latham.

FIRST ROW, LEFT TO RIGHT: B. Stewart, J. King, J. Goodowens, J. Cunningham, J. McCullough, J. Hancock. SECOND ROW, LEFT TO RIGHT: F. Vincent, M. Sloan, J. Keel, M. Arnold, J. Sanderson, R. Lewis, J. Evans, L. Selby, J. Campbell, G. Guffy, J. Paradise. THIRD ROW, LEFT TO RIGHT: M. Selvage, C. Arnold, R. Freeman, L. Hancock, N. Judge, C. Womack, W. Latham, I. Necklaus, B. Berry, B. Lefbetter, Mr. Bates. BACK ROW, LEFT TO RIGHT: J. Cline, C. O'Neal, E. Alkins, D. Fowler, E. Manning, R. Hendrix, H. Precise, A. Chandler, W. Precise, F. Roberts.



FLOAT

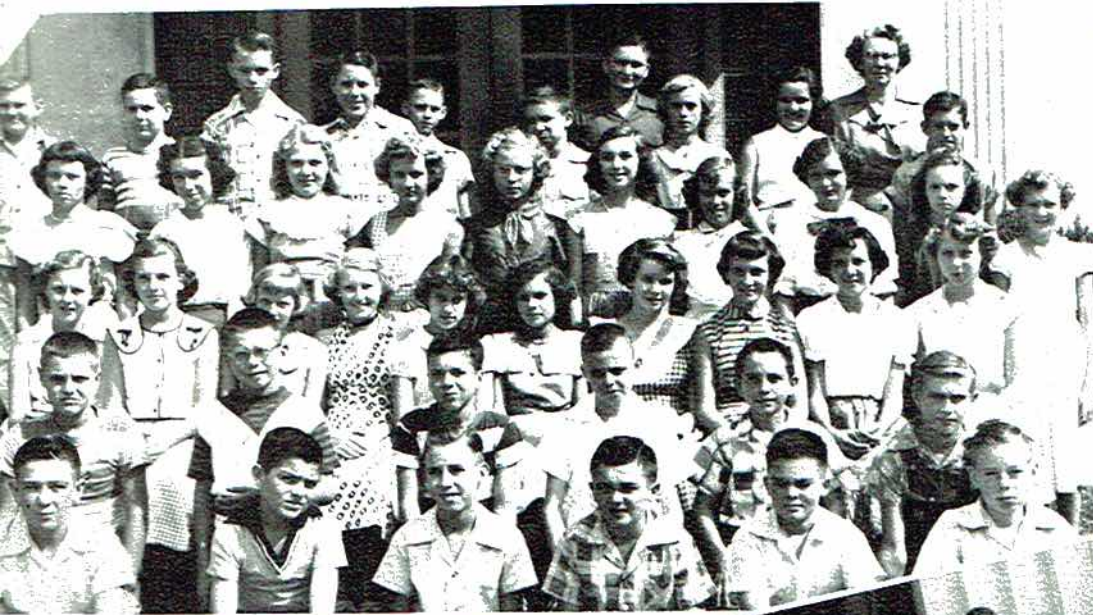


FIRST ROW, LEFT TO RIGHT: R. Wright, J. Womack, K. Hall, L. Tipton. SECOND ROW, LEFT TO RIGHT: W. Whitehead, B. Thomas, C. Southead, J. Bearden, F. Breedlove, A. Potter, W. Sisk, O. Short, F. Martin, M. Keith, L. Manning. THIRD ROW, LEFT TO RIGHT: Mrs. Vaught, M. Womack, M. O'Neal, C. Cosby, G. Lemons, E. Chrisman, L. Pruitt, M. Summer, P. Holt, J. Wright. BACK ROW, LEFT TO RIGHT: B. Jarmer, H. Downs, L. Hollis, G. Lusk, J. Rudder, B. Ashley, T. Moore, J. Olinger.

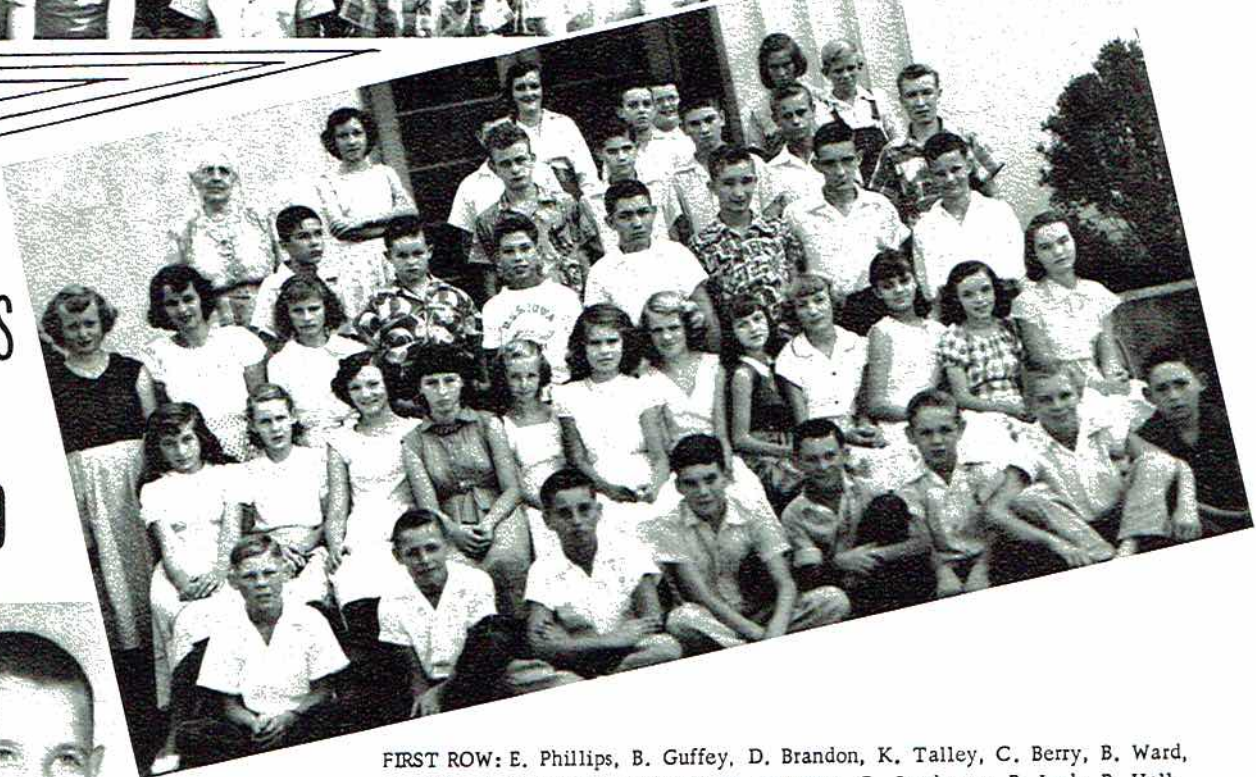


LEFT TO RIGHT, 1st ROW: W. McKee, C. Edge, P. Bentley, S. Brannum, R. Matthews, W. Edmonds. 2nd ROW: B. Shelton, B. Gay, L. Crawford, W. McCoy, B. Dean, B. Frazier. 3rd ROW: E. Cunningham, G. Power, C. Patterson, B. Sisco, B. Harbin, M. Wallace, E. Woodall, P. Cargile, J. Mason, L. Carithers, 4th ROW: J. Latham, B. Leslie, P. Bryant, A. Wallace, C. Rodgers, D. Lackey, B. DeArmond, H. Pickel, V. Mitchell, B. Guffey. 5th ROW: F. Hancock, T. Hall, K. Clemons, E. Gant, J. York, J. Manor, R. Carter, L. Pace, J. Clemons, Miss Stockton, O. Wilburn.

Rachel Downey  
Class Favorite



CLASS  
OF  
1959



Billy Hodges  
Class Favorite

FIRST ROW: E. Phillips, B. Guffey, D. Brandon, K. Talley, C. Berry, B. Ward, G. Stewart, F. Welch. 2nd ROW: D. Bellomy, C. Sanderson, R. Lusk, B. Hall, L. Bell, L. Shelton, B. Arnold, P. Potter, C. Ricker, B. Knight. 3rd ROW: V. Edmonds, W. Venable, B. Bogue, S. Reed, J. Miller, R. Robertson, J. Thompson, L. Irving, B. Ward. 4th ROW: R. Matthews, J. Armstrong, W. Smart, B. James, K. Bradford, W. Rich. 5th ROW: Mrs. McCrary, E. Timmons, J. Steely, M. Whitehead, B. Edwards, N. Dean, F. Kindred, G. Little.

Billie Brandon - In Memory  
 11-14-'40; 11-14-'53

FIRST ROW: G. Gentle, K. Little, E. Selvage, W. Knight, B. J. Evans, C. Chandler, B. Cornelison, S. Wooden, E. Govan, SECOND ROW: D. Stewart, R. Downey, F. Nevils, M. Judge, S. Wallace, O. Bradford, D. Bynum, E. Miller, N. Guffey, C. Gant, C. Pace, H. Allen, R. Sherrell, THIRD ROW: O. Frazier, B. Hodges, J. Clift, S. Elliot, C. Wheeler, M. Machen, S. Sanderson, J. Dudley, L. Christa, C. Whitehead, M. Ashley, Miss West, FOURTH ROW: D. Jordan, B. Bradford, P. Green, H. Frazier, O. Smart, J. Penny, B. Woosley, J. Baugh, M. Guffey, S. Dolberry.



Home Coming Float



BEGINNING FROM BOTTOM, LEFT TO RIGHT - FIRST ROW: Billy Mount, H. Smoot, B. Bailey, W. Walker, E. Hamer, R. Evans, D. Hastings. SECOND ROW: J. Manning, L. Kindred, R. Dun, F. Shelton, M. Harrison, L. Dun, L. Davies, W. Venable, E. Manning, B. Tiffin, M. F. Turley. THIRD ROW: R. Hammer, B. Bradford, C. Guffey, S. Burns, J. L. Wright, W. Collins, R. Evert, R. Young, J. Brown. FOURTH ROW: S. Brandon, R. Proctor, R. Hambrick, J. Cornelison, J. Bell, F. Keller, B. R. Gentle, E. Frazier. FIFTH ROW: M. Brandon, M. R. Knight, Mrs. Frank Hodges.



Shelby Brogden



Frances Gold



David Matthews



Sally Sanders



Joyce Hodges



Betty Faye Hancock



Carolyn Sentell



Elizabeth Porter



Yvonne Letson



Flora Matthews



James Keller



Wiley Finney

# JUST IMAGINE



Ray Smith



Jane Wilhelm

Barbara Womack

Charles Smith



Elizabeth Beard

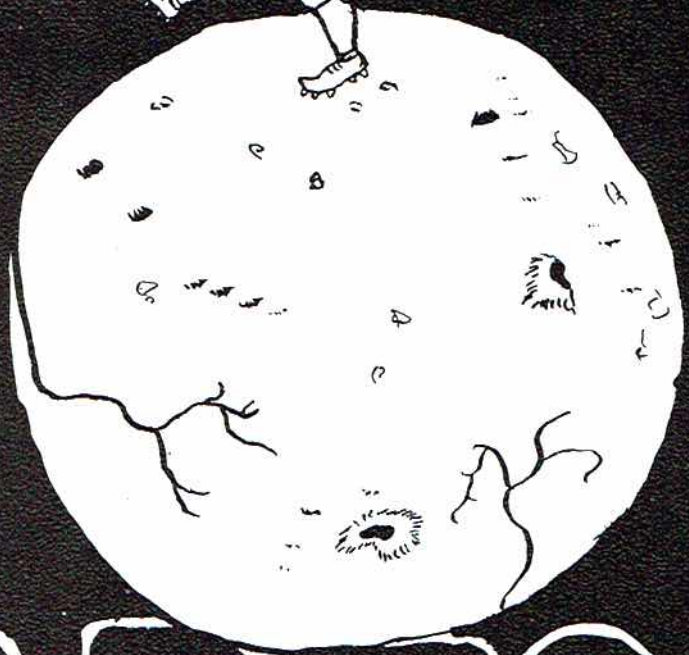
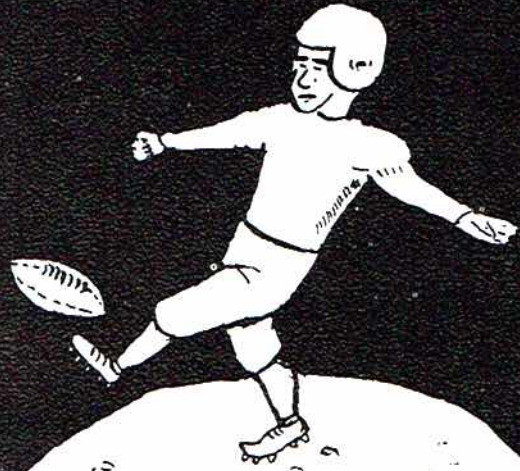
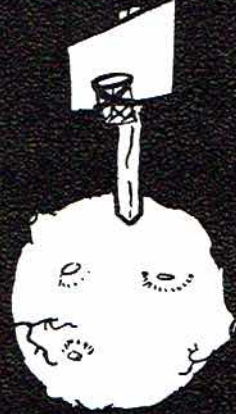


Joyce Irving



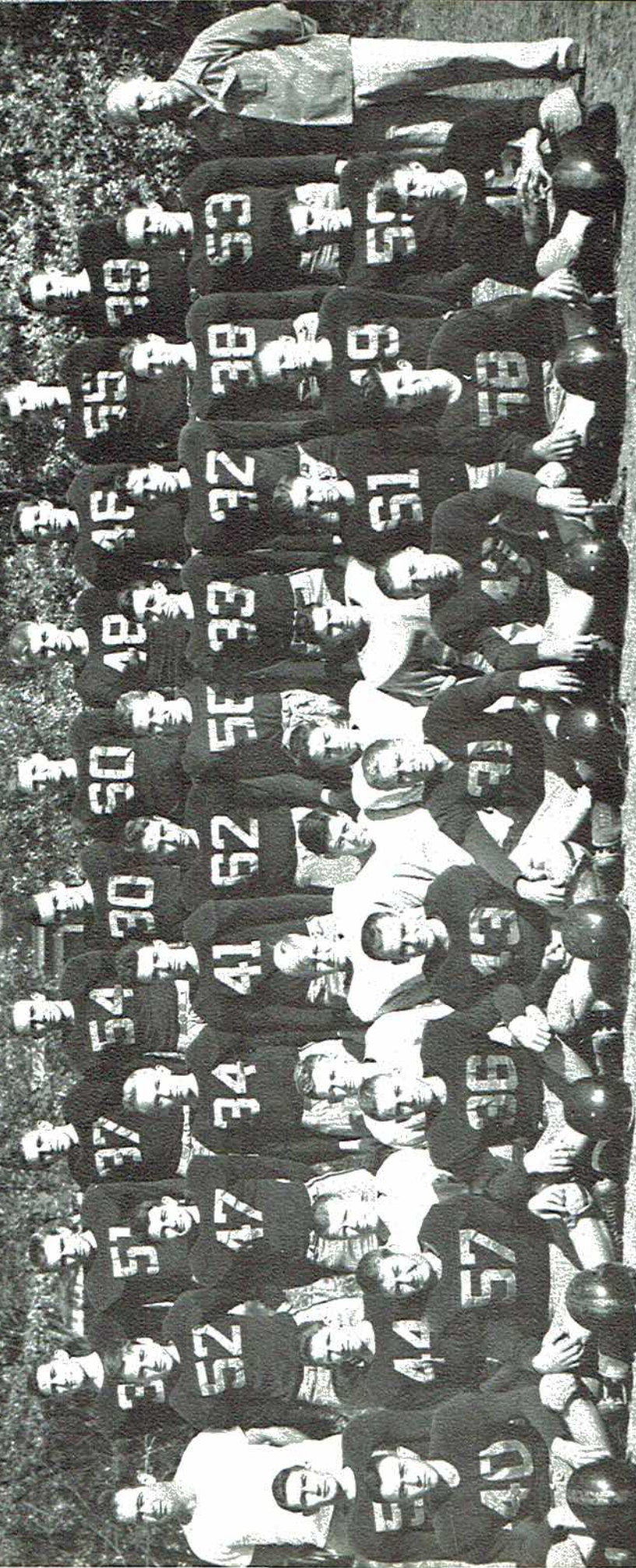
Sam Fred Gross

MARS CRUISER



# SPORTS

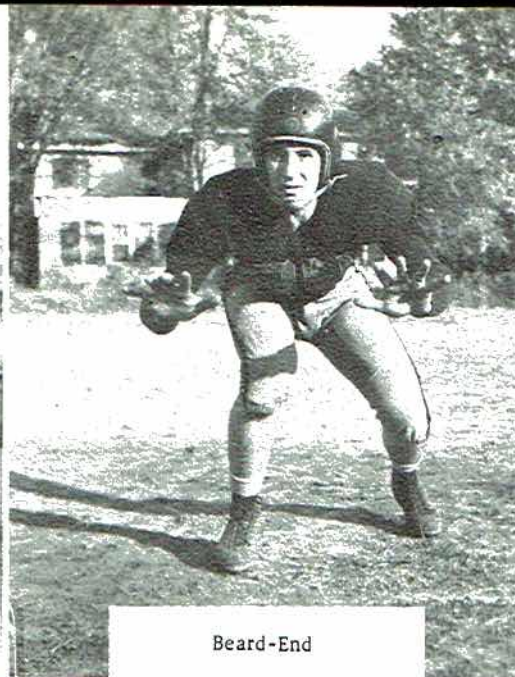
# THE MOUNTAIN CATS



**FIRST ROW (KNEELING):** Edger Arnold, Jake Myers, James Huber, Hugh Childers, Bob Davis, Strongbow, Ed To Right, Travis Sumpter, Perry Roybill, Roy McLaughlin, Bessie Batten, Benny Loyell, Ray McLaughlin, Billy Owens, Charles Hair, Max Huff, Billy Gordon Sanders, Clarence King.  
**SECOND ROW (SITTING):** Coach Edware Spear, Bobby Hodges, William Dean, John David Snodgrass, Wayne Sims, Charles Lee, Tom Mc, Don McGee, Willard, Jimmy Campbell, Story Ray, Coach Q. K. Carter.  
**THIRD ROW (STANDING):** Robert Skelton, S. L. Stone, J. B. Lust, Jimmy Spears, Aubrey Pocknis, Billy Charles Perry, Dale Trappnell, Bill Swasey, William Bentley, Archibald.



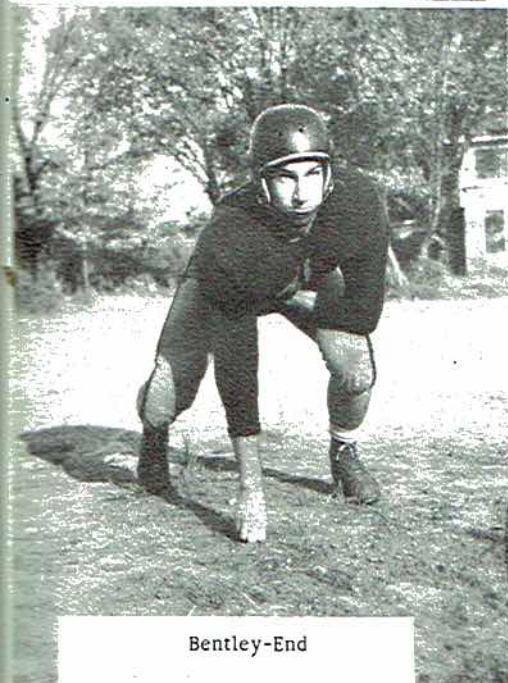
Co-Captains  
Ray and Huber



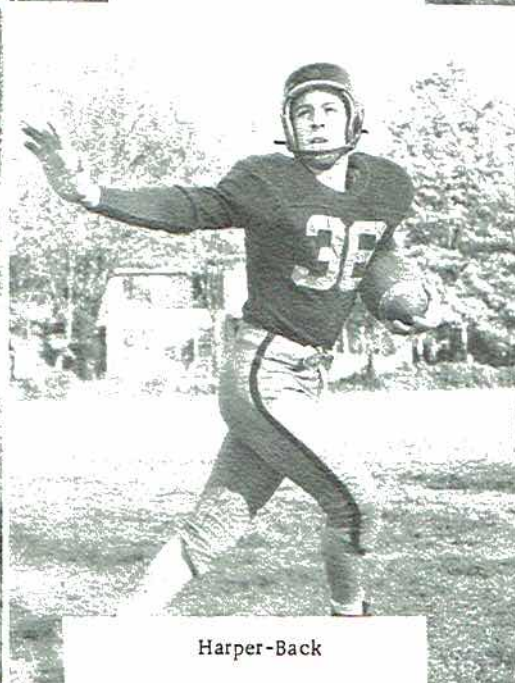
Beard-End



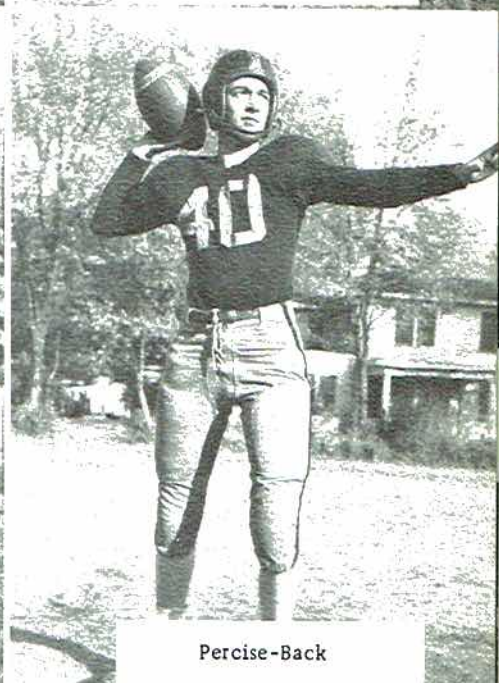
Perry-End



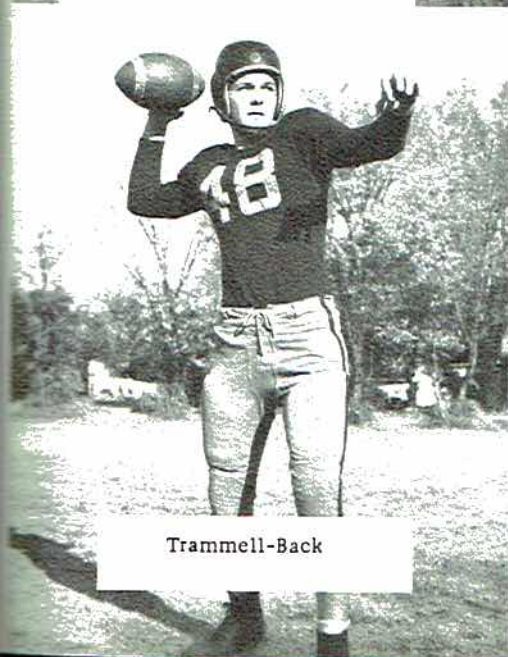
Bentley-End



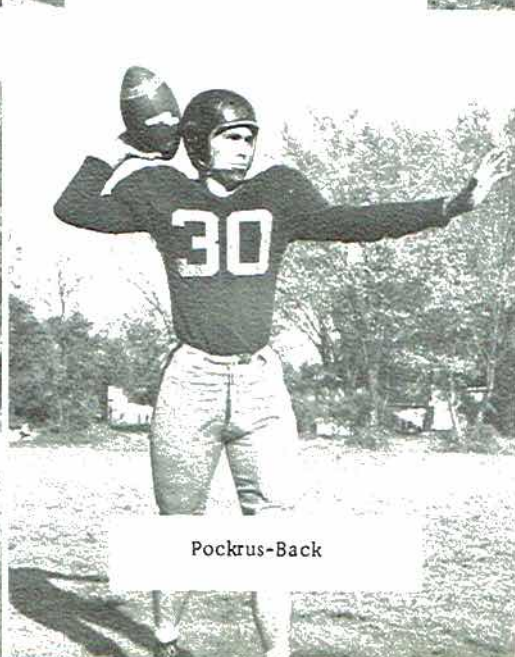
Harper-Back



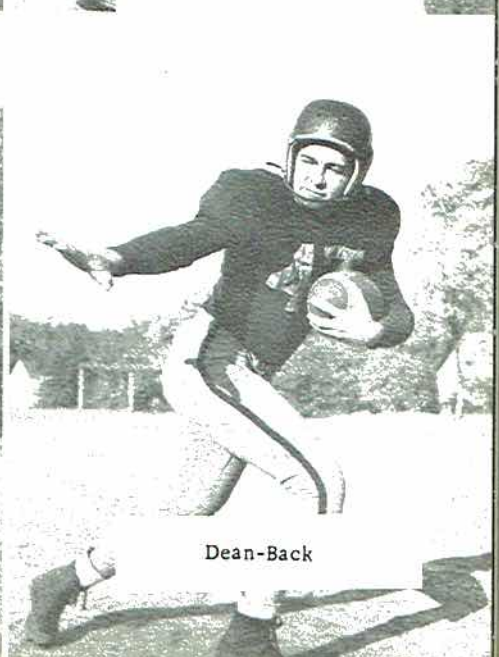
Percise-Back



Trammell-Back

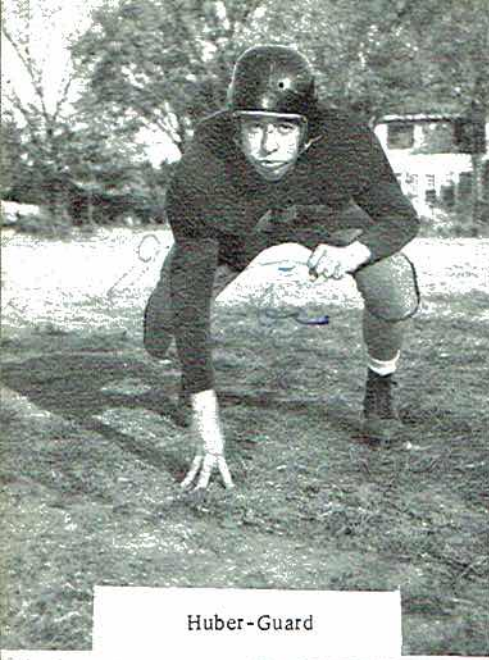


Pockrus-Back

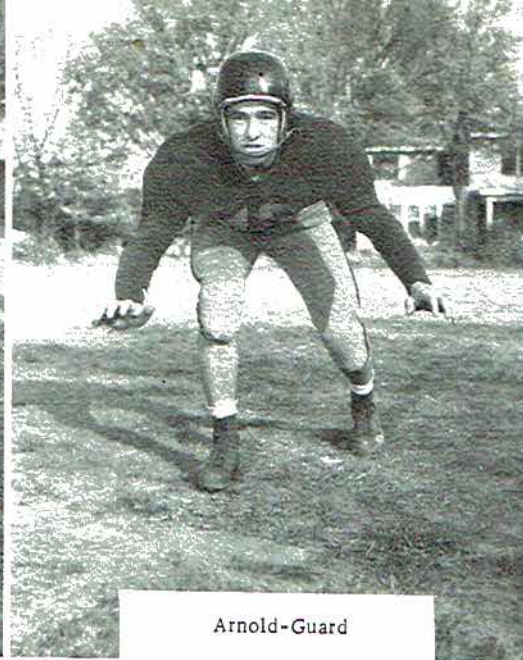


Dean-Back

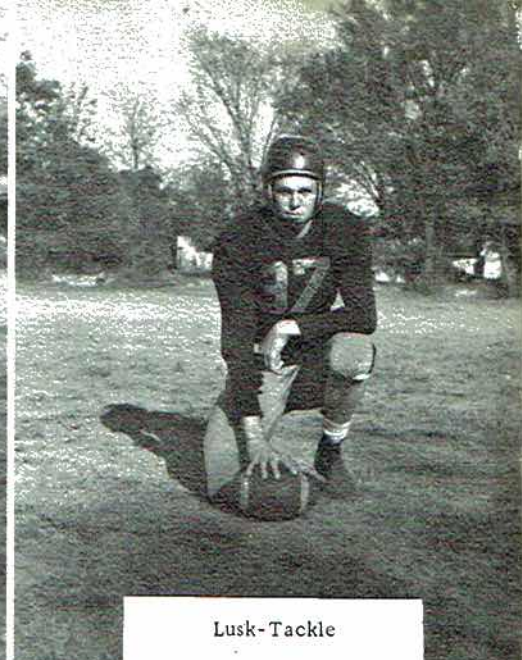




Huber-Guard



Arnold-Guard



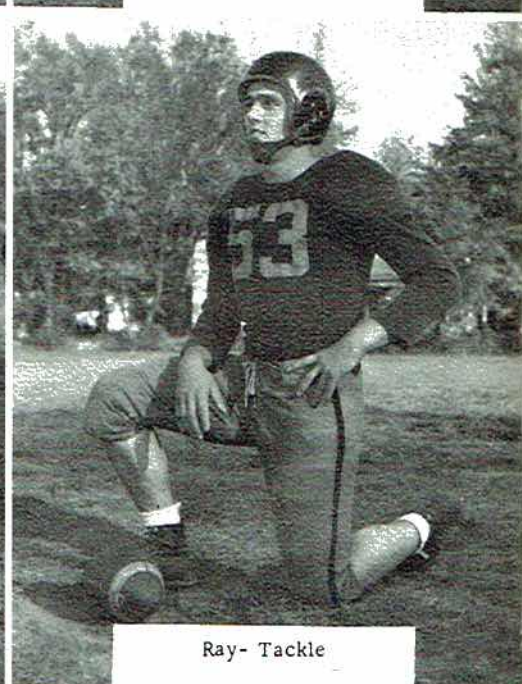
Lusk-Tackle



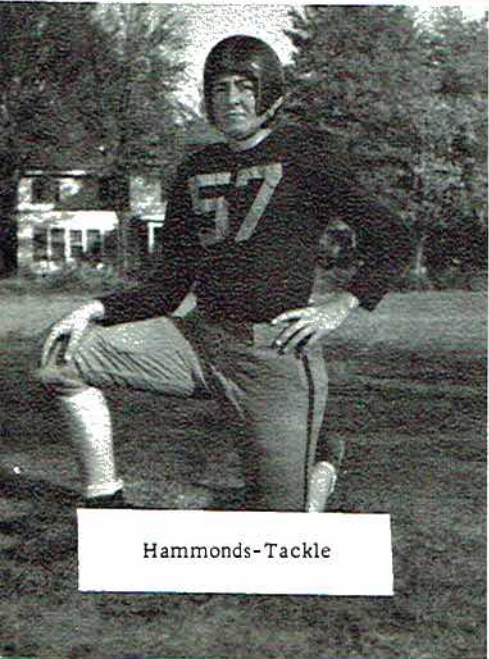
Spears-Tackle



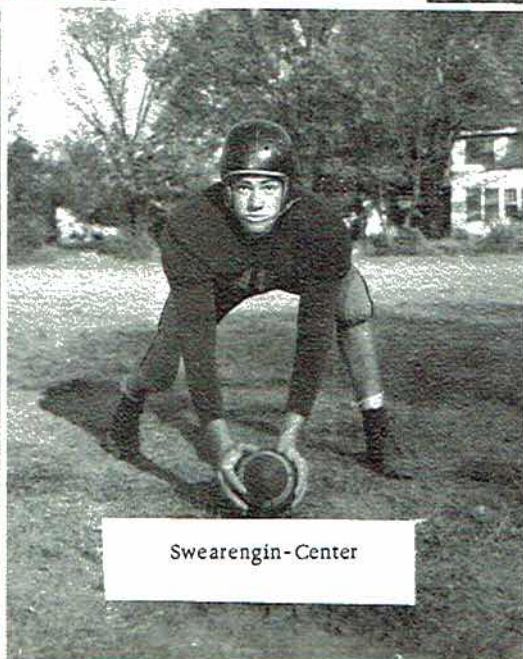
Campbell-Guard



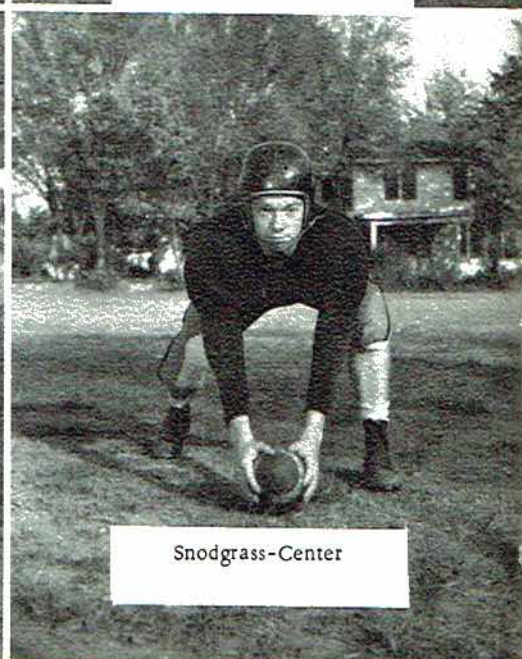
Ray-Tackle



Hammonds-Tackle



Swearengin-Center



Snodgrass-Center



ROW 1: Joyce Hodges, Head Cheerleader; Tommy Hodges; Frances Gold.  
 ROW 3: Shirley Knopps, Johnny Gross. ROW 4: Sarah Gross.

### BASKETBALL

✓ Scottsboro	67	Butler	80
✓ Scottsboro	69	Woodville	63
✓ Scottsboro	53	D. A. R.	55
✓ Scottsboro	59	Geraldine	61
✓ Scottsboro	64	New Hope	70
✓ Scottsboro	58	Huntsville	53
✓ Scottsboro	40	Pisgah	54
✓ Scottsboro	34	Albertville	33
✓ Scottsboro	73	D. A. R.	88
✓ Scottsboro	90	Albertville	53
✓ Scottsboro	64	Geraldine	78
✓ Scottsboro	63	Butler	64
✓ Scottsboro	93	New Hope	105
✓ Scottsboro	58	Princeton	52
✓ Scottsboro	52	Huntsville	92
✓ Scottsboro	52	Princeton	51
✓ Scottsboro	55	Woodville	56
✓ Scottsboro	75	Guntersville	77
✓ Scottsboro	53	Pisgah	65
✓ Scottsboro	61	Guntersville	68



Leftside: Coach Ed Spear, Football;  
 Rightside: Coach Q. K. Carter,  
 Basketball.

### FOOTBALL

✓ Scottsboro	19	Gurley	0
✓ Scottsboro	12	Blountsville	12
✓ Scottsboro	14	Butler	31
✓ Scottsboro	7	Albertville	27
✓ Scottsboro	6	Stevenson	3
✓ Scottsboro	0	Guntersville	20
✓ Scottsboro	0	Oneonta	25
✓ Scottsboro	19	Fort Payne	18
47 ✓ Scottsboro	0	Valley Head	12
✓ Scottsboro	6	Bridgeport	0

LEFT TO RIGHT: Dan Haynes, Marlon Hancock, David Ashmore, W.C. Walker, William Bently, Jimmy Roden, Billy Charles Perry, S. L. Stone, Arthur Beard, Hugh Stewart, Olen Holcomb.



LEFT TO RIGHT: Bobby Porter (manager), Jimmy Campbell, Donald Jacobs, "Satch" Kirby, Comer Jacobs, Billy Keller, Wayne Parks, Wayne Simms, Max Buff.



LEFT TO RIGHT: Buck Chandler, Pat Trammell, Billy Sanders, Jack Brandon, Bobby Hodges, Ray Gentles, Bob Davis, Wendell Nix.



LEFT TO RIGHT, 1st ROW: Raymond Hendrix, Porter Wann, Denny Lovall, Bobby Porter, Autry Gardner. 2nd ROW: Billy Kennamer, Edward Tubbs, Ralph Wright, Vernon Arnold, Emmit Manning. 3rd ROW: Jerry Cunningham, Doris Wayne Allison, Wendell Whitehead, Howard Precise, Robert Green.



*W.C. Walker*

*Billy Charles Perry*



W. C. WALKER

*Dan Haynes*



BILLY CHARLES PERRY

*Wm. Bentley*



*Olen Holcomb*



DAN HAYNES  
WILLIAM BENTLEY  
OLEN HOLCOMB

*Arthur Beard*



ARTHUR BEARD  
JIMMY RODEN  
S. L. STONE

HUGH STEWART

DAVID ASHMORE

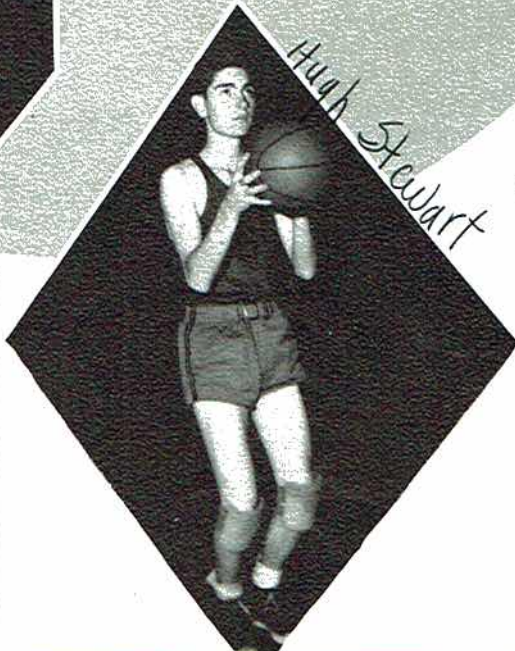
*Timmy Roden*



*S.L. Stone*

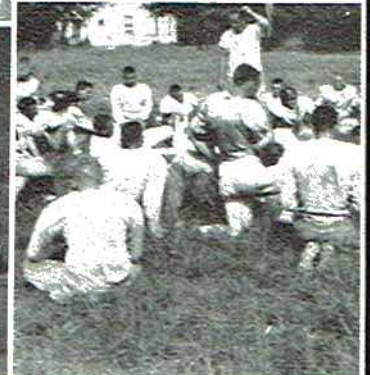
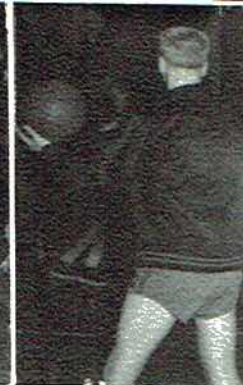


*Hugh Stewart*

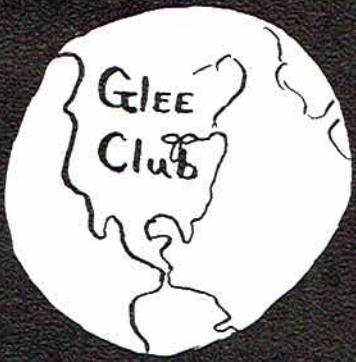
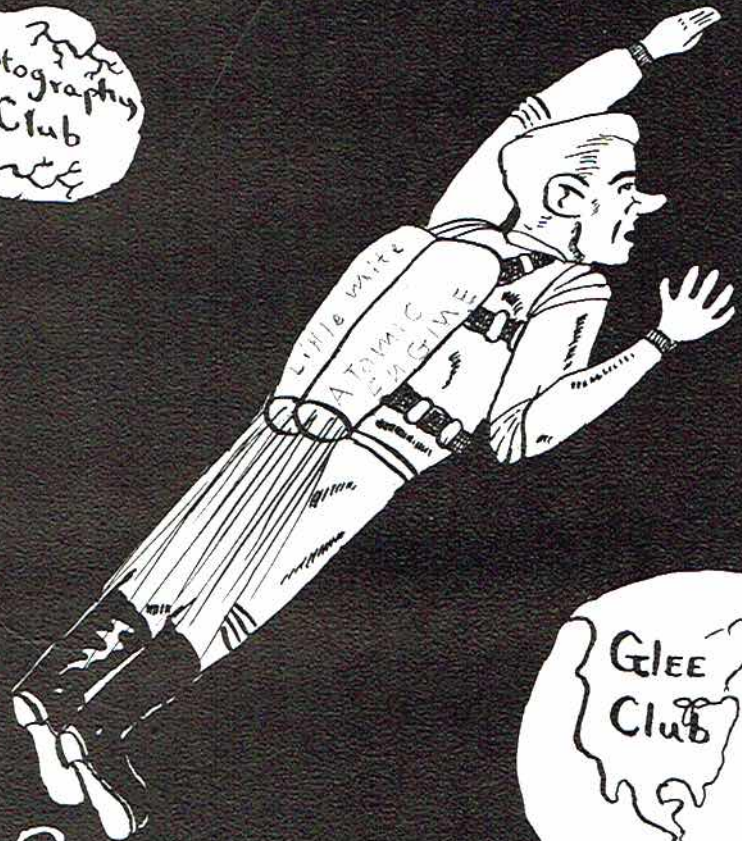


*David Ashmore*

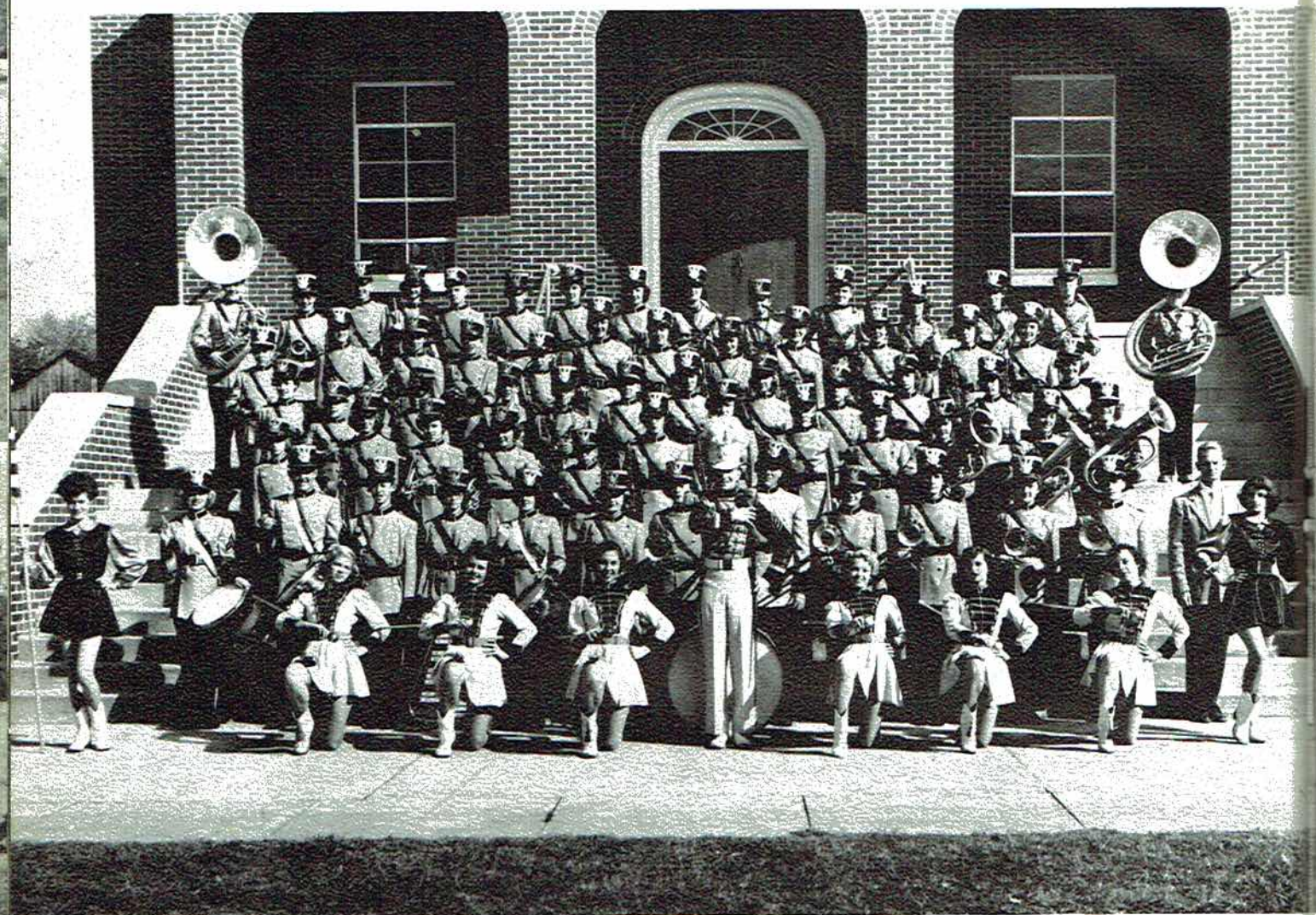




Student Council



# Activities



ROW I: Dorothy Gentle, Virginia Brandon, Frances Wright, Joan Thomas, Charles Smith, Carol Hayes, Genenne Sisk, Patsy Hall, Carolyn Campbell. ROW II: Peggy Rogers, Jerry Rudder, Autry Gardner, Sue Yarbrough, Joyce Lewis, Annette Arendale, Carolyn Gilliam, Billy Miller, Jane Beard, Geneva Sumner, Barbara Sue Jones, Bobby Stewart. ROW III: Lila Jean Pace, Mary Sue Evans, Barbara Gilliam, Joyce Henderson, Robert Anderson Gay, Linda Hall, Frances Gold, Brad Howland, Billie Allen, Charlotte Killian, Nina Jo Wann, Shirley Machen. ROW IV: Charlsie Gilliam, Roland Matthews, Kenneth Clemons, Larry Crawford, William Edmunds, Charles Edge, Karen Hodges, Ann Wallace, Tommy Hall, Ann Wales, Mary L. Ambrester, Margaret Jo Swaim. ROW V: Joel Hodges, Virginia Westmoreland, Jane Staton, Stanley Smoler, Alton Hastings, Barbara Couch, Rosa Precise, Peggy Snoddy, Bettye Hastings, Patricia Procter, Ann Cloud, Bety Lusk. ROW VI: L. D. Garner, Jo Anne Kennamer, James Turner, Inez Chamlee, Johnny Bolding, Smith, Brannom, Kay McCormick, Joanne Vaught, Gene McCutchen, Lewis Letson, Leon Engledow, Mary Charles Hodges, Patricia Cargyle, Stella Word, Fred Wallingford.

Whether playing at a football game, during an assembly, or on a parade, the J. C. H. S. Band, under the direction of George Baker, adds life and pep to the occasion. All year the band has been busy, following the football shows with several concerts.

During the past year the band has increased in number and improved in playing and marching ability. It has participated in numerous civic activities and contributed to the musical education and enjoyment of the community.

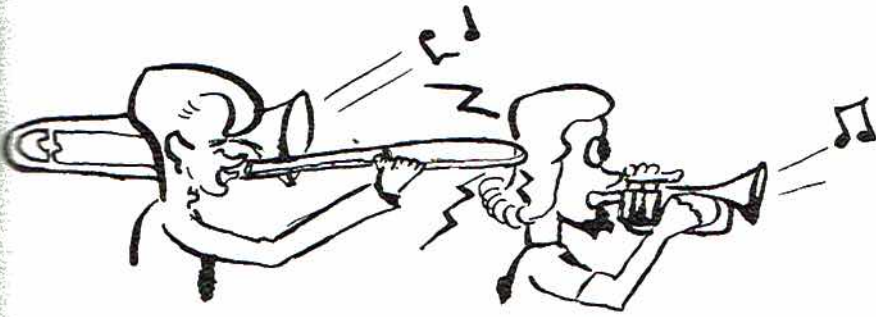
THE OFFICERS ARE

Charles Smith . . . . .	President
Jo Anne Kennamer . . . . .	Vice-President
Gene McCutchen . . . . .	Secretary
L. D. Garner . . . . .	Treasurer

# OUR BAND



MR. GEORGE BAKER  
Director





# FUTURE HOMEMAKERS OF AMERICA

FIRST ROW, LEFT TO RIGHT:  
L. Gillisy, A. Cloud, H. Lingerfelt, S. Hoge, A. Shelton, S. M. Sanderson, B. Thompson. SECOND ROW: J. English, M. J. Machen, T. R. Hubbard, J. Lewis, C. Killian, B. Hastings, D. Gentle, T. McKey, E. McClare, M. A. Smith, W. Creed, B. K. James. THIRD ROW: F. Sharp, R. Shelton, B. Allen, G. Loyd, E. Smally, I. Reed, R. Tigue, P. McGriff, M. Hammons, D. Allen, W. Patterson, Mrs. Turner, E. Stone, S. Townson. FOURTH ROW: J. Beard, B. Jones, B. Mitchell, L. Clement, J. Bellomy, E. Bradford, R. Johnson, L. M. Lands, W. J. Williams, H. Russell, R. F. Phillips.



FIRST ROW, LEFT TO RIGHT:  
J. Griffith, M. R. Dunn, S. L. Medlock, S. Wilson, M. Brannon, N. L. Gross, N. Wann, S. Yarbrough, J. Welborn, B. J. Isable. SECOND ROW: F. Wright, P. West, O. Bradford, E. R. Hancock, M. Brandford, P. Hamilton, S. Wilson, E. Whitaker, M. Sparks, Mrs. Turner. THIRD ROW: P. Thomas, M. Wallace, W. Hancock, W. Staton, P. Chambers, S. Machen, I. Hall, J. Pucket, G. Jones, B. Barclay.



FIRST ROW, LEFT TO RIGHT:  
A. J. Wilkerson, D. Green, D. Haynes, M. Roberts, S. Gross, S. Sanders, M. L. Stone, J. Hodges. SECOND ROW: Mrs. Turner, C. Green, B. Pope, S. Boyd, B. Roberts, J. Mann, L. Snoddy, S. Campbell, B. Glass, F. Caperton. THIRD ROW: B. Matthews, J. Staton, J. R. Myers.



FIR  
ford  
Hut  
N.  
mil  
Gar  
J.  
THI  
C.  
Sto  
Rod  
glis  
O.  
Cla

FIR  
We  
Mi  
RO  
tin  
My  
Bel  
Wi  
D.  
RO  
gen  
Sw

FIR  
no  
W.  
RO  
Mi  
W.  
Ro  
J.  
J.

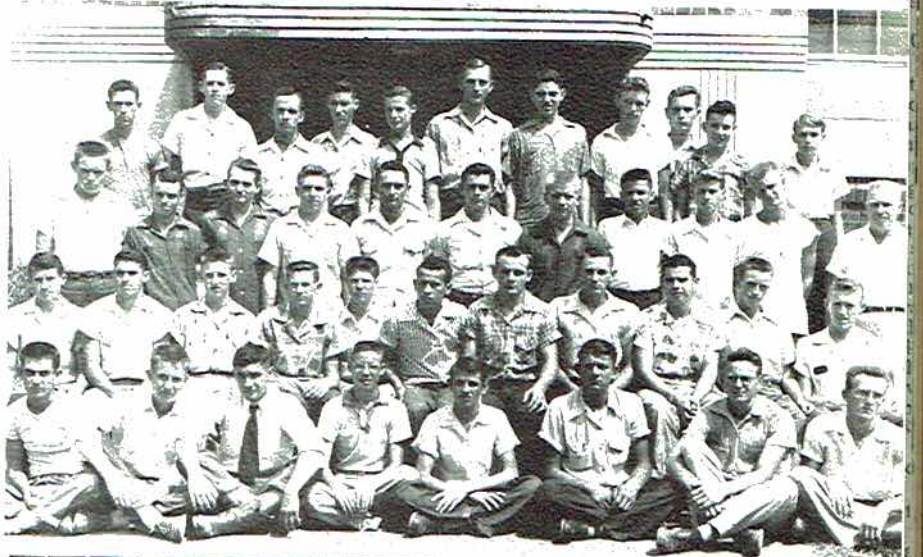
### FIRST YEAR

FIRST ROW, LEFT TO RIGHT: A. McKenzie, J. Bradford, F. Tubbs, W. C. Roach, C. E. Ferguson, D. Hutcheson, E. Middleton, J. Baker, B. Middleton, N. Lusk, Mr. Phillips. SECOND ROW: F. Loudermild, G. Clemons, R. Short, F. Crawford, J. Ganes, C. Bryant, J. R. Sparkman, A. Dudley, J. Dukes, F. Myers, D. Patterson, R. Hilley. THIRD ROW: B. Culpepper, F. Talkington, J. Nix, C. Lusk, B. Proctor, A. B. Culpepper, S. L. Stone, M. Hancock, B. Reed, G. Stone, J. Rodgers. FOURTH ROW: W. Swearengin, D. Inglis, B. Porter, J. Wininger, B. Brown, J. Roden, O. B. Phillips, D. Jacobs, T. Chandler, R. Clark, M. Buff, L. Cornelison.



### SECOND YEAR

FIRST ROW, LEFT TO RIGHT: J. E. Hall, R. Westmoreland, J. Arnold, G. Dodson, J. Middleton, A. Little, B. Goff, R. Gross. SECOND ROW: R. Smart, C. Hass, K. Chandler, R. Martin, B. Riley, F. Akes, E. Arnold, A. Beard, B. Myers, P. Holcomb, J. Bryant. THIRD ROW: H. Bellomy, E. Shelton, D. Waldon, G. Frazier, W. Wilbourn, B. Dukes, W. Jones, L. McCutchen, D. Womack, F. Evett, Mr. Phillips. FOURTH ROW: G. Johnson, B. James, R. Knight, W. Lingerfelt, H. Carter, C. Jacobs, R. Edwards, J. Swearengin, G. Woodin, W. Britt, R. Johnston.



### THIRD YEAR

FIRST ROW, LEFT TO RIGHT: J. Woosley, C. Arnold, J. Cook, H. Weeks, V. Hogue, K. Welch, W. Shelton, T. Hancock, D. Stover. SECOND ROW: D. Matthews, R. Allen, O. Holcomb, M. Miller, D. Haynes, J. McKenzie, P. McCarver, W. C. Sparks, B. Matthews. THIRD ROW: C. Robertson, A. Pockrus, W. Finney, D. Wilbom, J. Shavers, B. C. Perry, J. Spears, D. Lackey, J. B. Lusk, E. Knight.



# FUTURE FARMERS OF AMERICA

# F. T. A.

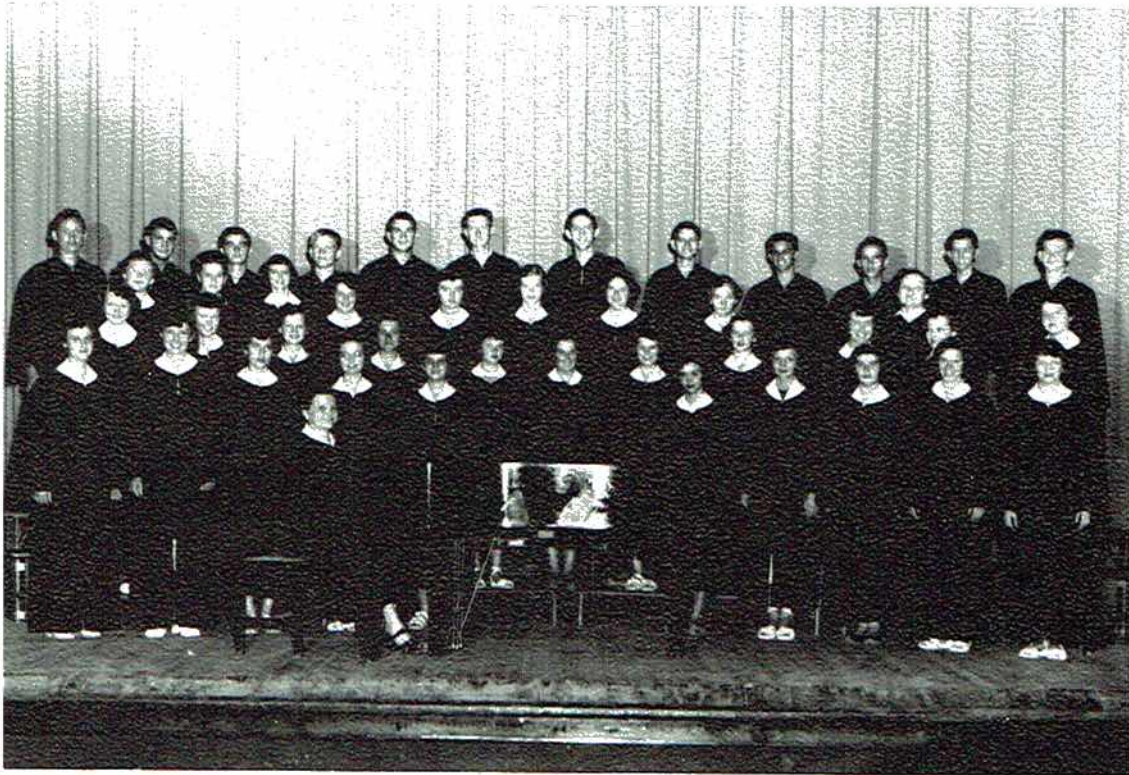


FRONT ROW, LEFT TO RIGHT: Condon Campbell, Martha Keeton, Patsy Hall, Ann Barbee.  
 SECOND ROW: Carolyn Sentell, Linda Henshaw, Marie Bynum, Mary A. Thomas, Jane Hodge,  
 Barbara Womack, Louise Foster. THIRD ROW: Frances Roach, Fay Carter, Patsy Hamilton.  
 FOURTH ROW: Joan Thomas, Johnny Gross, Emma G. Moore, Bettye Thompson. FIFTH ROW:  
 Scotty Watson, Scotty Ray, Hispanolia Bellomy, Tommie R. Hubbard, Mavis Lusk, Johnny  
 Shavers, Shirley A. Machen. CAMERA SHY: Betty Berry, Shirley Jenkins, Sue McLaughlin,  
 Louise Holloway, Harriett Bates, Max Buff, Geneva Berry, Delores A. Haynes.

- ✓ President . . . . . Ann Barbee
- Vice President. . . Shirley Jenkins
- Secretary . . . . . Martha J. Kenton
- Treasurer . . . . . Condon Campbell
- Historian . . . . . Patsy Hall
- Sponsors. . . . .

Miss Michaels, Mrs. Hambrick

# GLEE CLUB



Director at the piano, Mrs. Frank Hodges. FIRST ROW: M. Bynum, E. Smalley, F. Roach, B. Paradise, L. Henshaw, M. Hammon, J.A. Vaught, R.P. Precise, I. Hancock, J. Irving. SECOND ROW: J. Griffith, R. Nichols, B. Mitchell, B. Womack, D. Neely, J. Matthews, H. Bates, L. Hall, P. Thomas, G. Jones, E. Beard. THIRD ROW: W. Green, J. Bellomy, I. Reed, R. Tigue, C. Blackwell, B. J. Welch, S. Watson, B.S. Sparks, L. Roberts. FOURTH ROW: E. Evans, J. Arnold, B. Dukes, W. Jones, A. Bellomy, R. Westmoreland, C. Sharp, R. Edwards, M. Buff, R. Knight, J. Brown, B. Bullman. CAMERA SHY-- Betty Hancock, Jimmy Campbell, Ollie Crawford, Bob Gant, Charles Hass, Wayne Sims.

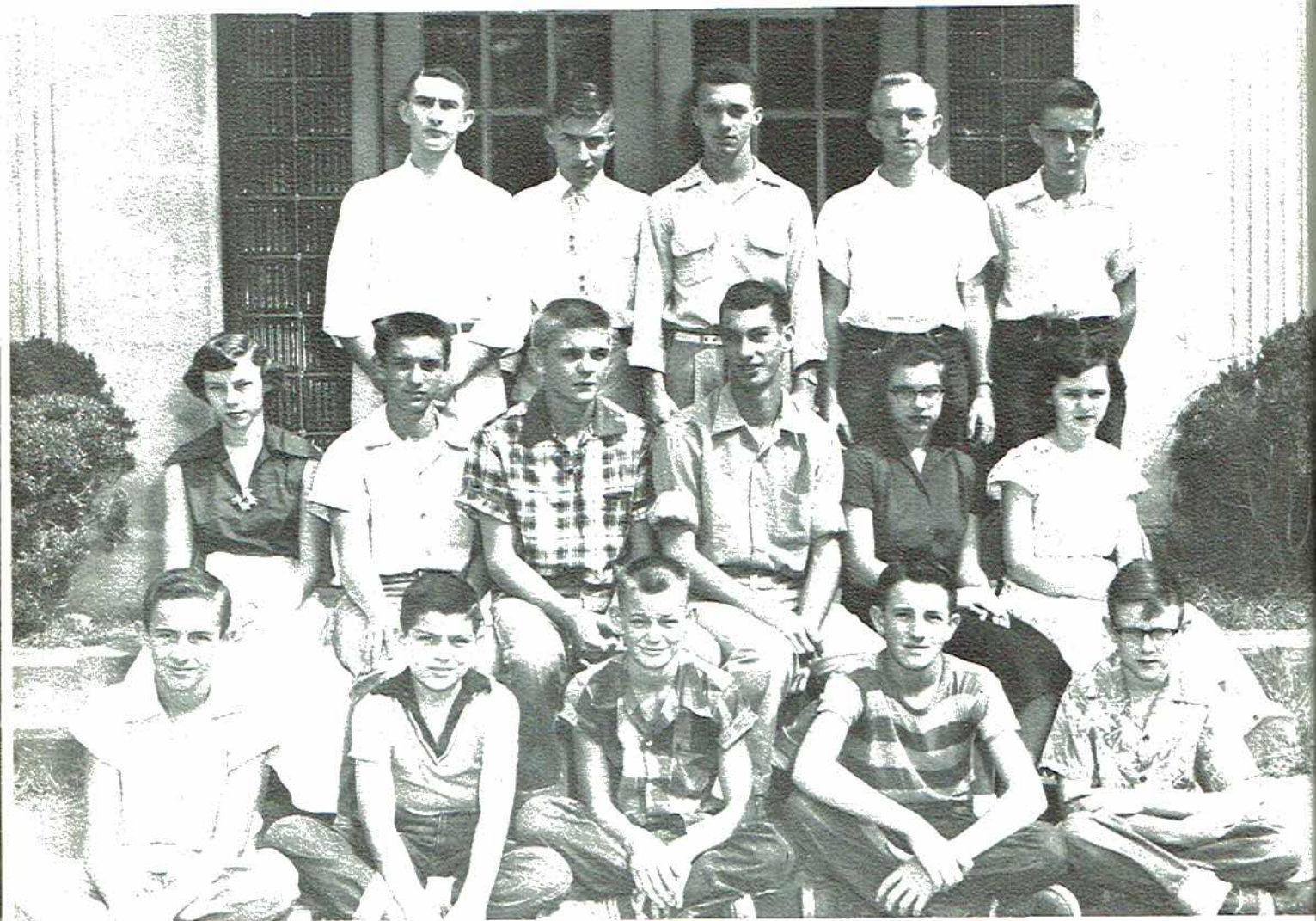
The J. C. H. S. Glee Club originated eleven years ago under the direction of Mrs. Frank Hodges, who has helped to make the Glee Club what it is today.

This year, for the first time, A and B Glee Clubs were selected by try--outs. Bandmaster George Baker assisted Mrs. Hodges with the B Glee Club.

The Glee Club participates in a district festival at Florence State Teachers College. A Christmas program, programs over the radio, and the county music festivals are other activities of the Glee Club.

To help students recognize and appreciate good music is the purpose of the Glee Club. By having more music in school, everyone is enabled to become, not a professional musician, but an appreciative listener, and to know the world's music as he knows its history, poetry, and art.





FIRST ROW, LEFT TO RIGHT: Ralph Wright, Charlie Edge, Raymond Hendrix, Stanley Brannun, David Kerr. SECOND ROW, LEFT TO RIGHT: Jean Dawson; Max Buff, Sec. & Treas.; Dale Trammell, Pres.; William Bentley, Vice Pres.; Bettye Thompson; Barbara Gilliam. THIRD ROW, LEFT TO RIGHT: David Ashmore, Ray Smith, Wayne Sims, John David Snodgrass, Laddie Irving. CAMERA SHY: Billy Hodges, Nancy Talley, Denny Lovell, Wallace Allen, William Dean.

## STUDENT COUNCIL

The excitement of election, the thrill of installation, the satisfaction of completing projects such as the homecoming--all of these were a tangible part of being a member of the Student Council; the intangible part went even deeper to the solemn dignity and responsibility of carrying out the school's ideals--character, scholarship, leadership, and service.

V  
ycc  
y Tho  
ign at the  
County  
wing, an  
er, as Ho  
Thompson  
eleventh  
y, as he  
on the  
attendan  
the Br  
band in  
played an  
we was  
field by  
the Seni  
forward  
Trammell  
the ba  
"."  
commem  
ed by th  
riding i  
he consis  
fers, floa  
Homecom  
and "  
Coll F  
allowing  
second si  
Hodge, C  
kins, To  
son, Jo  
Thomas  
pbell, J  
e Killian,  
Karen  
Pauline  
e Sizem  
Glori  
Carol F  
Cunn  
Eachel  
students  
second si  
Campb  
Ebelton,  
the Sam  
Carolyn  
Sente  
Sue J  
ay Fran  
Ray Sr

# WILD CAT



SCOTTSBORO, ALABAMA, DEC. 8, 1953

## Irving Reigns At Homecoming



Thompson and ... Attendants

At the annual Homecoming, county High School chose an attractive and popular Homecoming Queen and Harriet Bates, seventh and tenth grades reas her attendants.

Each ...

## Carolyn Gilliam Selected Good Citizenship Girl



## Seniors Sell Magazines

"Would you like to buy a magazine?" There's the three-way at a big bargain or a magazine most any subject. Surely you'll find one on the list you can use of three or four." This is probal you have been hearing from seniors for the past few weeks.

With much enthusiasm, the seniors began their sale of magazines to finance the trip to Washington in the spring. They were divided into groups to homerooms and the quota for each homeroom is the sale of \$200 worth of magazines.

The room having the largest amount of money at the end of the sale will receive an ice cream party and a homeroom teacher of winning will get a necklace and earrings.

At the present time the highest sale is Sam Fred Gross from the ... homeroom. Carolyn ... highest. Other high ... Caperton, and James ... was the winner and, the autograph ... largest number of ... the first week ... the first girl to sell ... of magazines ... received a leather ... Keller was the winner ... knife. He was the ... dollars' worth of ...

Other members of ... certificates from ... Publishing Company ... sales total. ... sign will end on ... and the seniors ... their quota by that ...



## "B" Honor Roll For Second Six Weeks

Following students made all A's and B's during the second six weeks:

Edge, Carolyn Gilliam, Shirley, Tommy Ruth Hubbard, Johnnie Gross, William Thomas Dean, Max Buff, Jimmie, Jimmy Clyde, Roden, Killian, Alvin Potter, Audrey Karen Hodges, Barbara Pauline Whitehead, Juanita Sizemore, Beth Lusk, Peggy Gloria Power, Elizabeth Carol Patterson, Juanita Lillian Cunningham, Larry Crawford, Rachel Downey.

Students made all A's and B's during the second six weeks' period:

Campbell, William Dean, Melton, Charles Stewart, Hubert, Sam Fred Gross, Martha Carolyn Downey, Joyce Irving, Sgtell, Ann Barbee, Wanda Sue McLaughlin, Christine Frances Proctor, Johnny Ray Smith, Charles Smith, Scott Harper, Wesley

... and Ben ... Louis Letson, David ... Billy Ray Smart, Pat Trammell, Mary Louise Ambrester, Billy Ann Cloud, Jean Cunningham, Mary Sue Evans, Doris Ann Finney, Marga Bradfoley, Pete E, gile, J, bara llam F, Tomm Leslie.

## Class Prepares For Contests

FIRST ROW: C. Campbell; C. Sentell; M. Thomas; J. Hodge; P. Hall; A. Barbee; C. Gilliam; J. Dawson; W. Bentley. SECOND ROW: B. Hancock; K. Hodges; L. Snoddy; B. Thompson; R. Nevils; G. McCutchen; F. Gold; M. Proctor. THIRD ROW: Y. Letson; J. Kennamer; B. Couch; P. Trammel; C. Smith; C. Reed; G. Fossett. FOURTH ROW: D. Ashmore; D. Trammel; P. Swain; T. Hodges; W. Griffin; Jane Hodge, Editor; Patsy Hall and Mary Alice Thomas, Associate Editors, Mrs. Kenneth Muse, Advisor.

Lila Jean Pace, Bonnie Sisco, Ann W. lace, Bettye Bouldin, Rena Lusk, Doris Bellomy, Patricia West, Virginia Jones, Helen Howard, Virginia Brandon, Barbara Ann Allen, Billy Joe Reed, Jerry Cunningham, H. W. Chandler, Joyce Keel and Kenneth Clemons.

## P. E. Girls Sponsor Annual Cake Sale

of the public-speaking course. The eleven students are merely preparing their speeches for the Birmingham News and the American Legion Oratorical Contests.

Entering into the Birmingham News contest are Alfred Bellomy, Martha Campbell, Sam Fred Gross, and Jane Hodge. They will make a six-minute speech on various phases of the subject, "How Can America Have Pro-

## Cook, President of Snead College Visits at J. C.

By Mary Frances Proctor

Last Tuesday, November 3, students in the 9th, 10th, 11th and 12th grades were very happy to have Dr. Festus Cook visit them.

Dr. Cook is the President of Snead College in Boaz and is very popular in high school students and will fare in life when their school are over.

Dr. Cook's talk was very interesting and had both an amusing and serious side.

He began his speech with jokes and amusing stories and appealed to the serious side of students' nature by telling them to succeed in life one must have ambition and determination.

Dr. Cook pointed out that to be the top in the profession of a person must be willing to go to the bottom and work his way up by step.

# REMINDER STAFF



FIRST ROW: Carolyn Gilliam, Charles Smith. SECOND ROW: Linda Henshaw, Bettye Hancock, Joyce Hodges, Martha Keeton, Gene McCutchen, Ann Barbee, Mary Frances Proctor, Jo Ann Vaught. THIRD ROW: Martha Campbell, Elizabeth Porter, Linda Hall, Jo Ann Kemmamer. FOURTH ROW: William Bentley, Dale Trannell, Yvonne Letson, Condon Campbell, L.D. Garner.

Carolyn Gilliam . . . . . Editor  
Charles Smith . . . Business Manager  
Miss Lilly Porter. . Faculty Advisor



Frances Gold  
Oratorical, American  
Legion

Sam Fred Gross  
Oratorical, Birmingham  
News

Dale Trammell  
Oratorical, Civitan

Mary Frances Proctor  
Oratorical, Civitan



Linda Hall, Jo Ann Kennamer, Jo Ann Vaught-Salesmanship.



# WINNERS

Carolyn Gilliam  
D. A. R. Good Citizenship



Miss J.C.H.S. Court  
Ann McCord, Jr. Alternate  
Patricia Proctor, Jr. Miss  
J.C.H.S.  
Frances Ann Wright, Sr. Miss  
J.C.H.S.  
Carolyn Sentell, Sr. Alternate  
Virginia Brandon, '53 Jr. Miss  
J.C.H.S.  
Mary Frances Proctor, '53 Sr.  
Miss J.C.H.S.



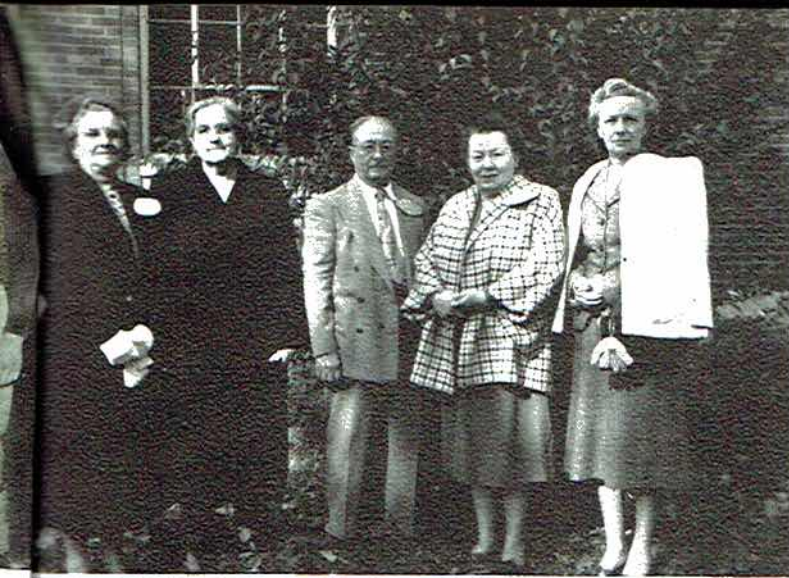




## HOMECOMING

JOYCE IRVING, Homecoming Queen  
BETTYE THOMPSON and HARRIET BATES,  
Attendants

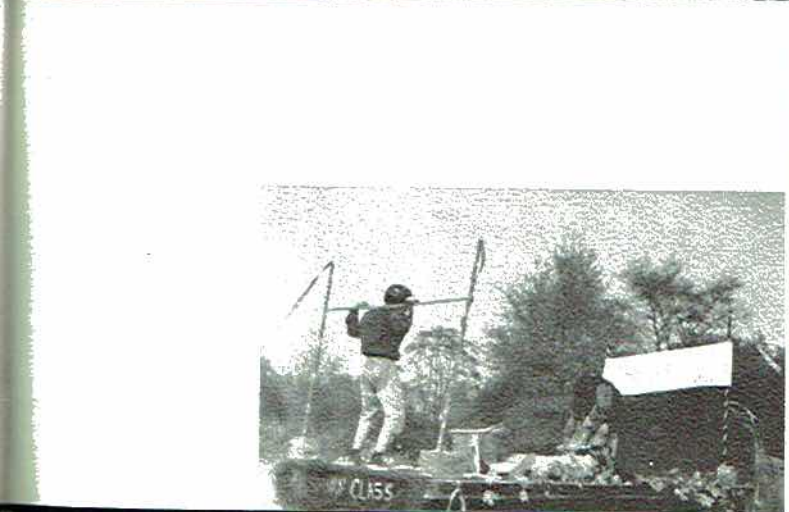




Graduates of '15 and '16

Intermediates

Graduates of '53



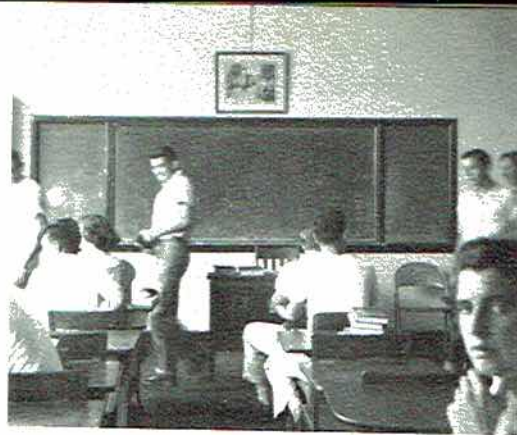
# 4-H CLUB OFFICERS



FIRST ROW, LEFT TO RIGHT: Bob Dean, Rachel Downey, Carolyn Gant, Elizabeth Woodall, Bonnie Sisco, Carol Patterson, Barbara Dearmond, Bonnie Harbin. SECOND ROW, LEFT TO RIGHT: Margaret Tate, Ann Cloud, Doris Finney, Beth Lusk, Peggy Hodge, Ann Wales, Thethel Haynes, Hohnnie Hancock. THIRD ROW, LEFT TO RIGHT: Billy Porter, Lattei Irving, Johnny Woodall, Winston Baker, Billy Hodges.



Stella Word & company in Demark.



----and the class begins.



"Yew, Yew, Yew--there's no one like yew--"



"Weave me a wonel"



Gentlemen at Rest.



She sho iz bashful.



"But how is CA equal to XY?"



Pennies for the blind?



Anybody Want a ride?

Do you remember?

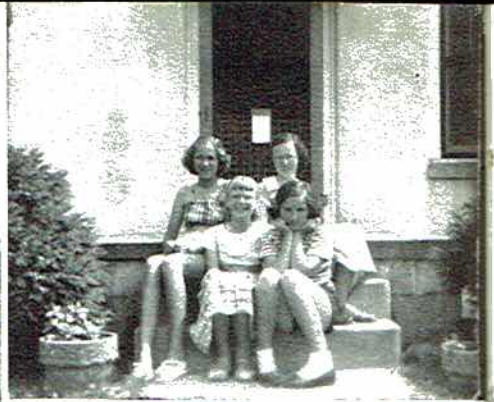


Haylow theayuri

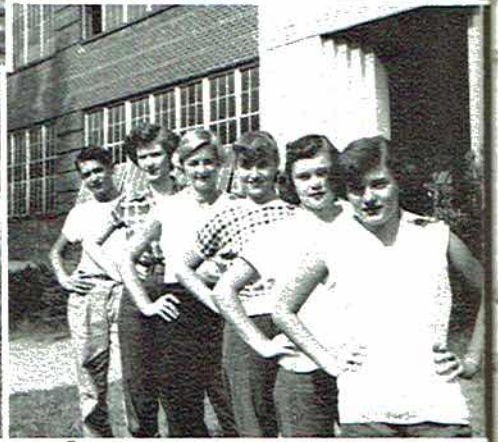


"Old Glory" has it rough.

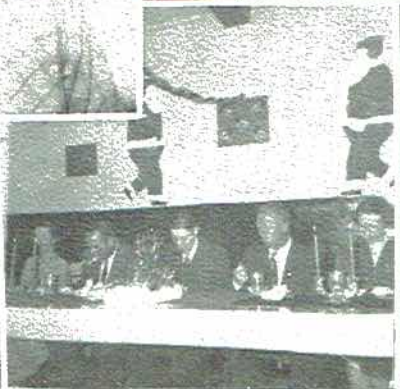
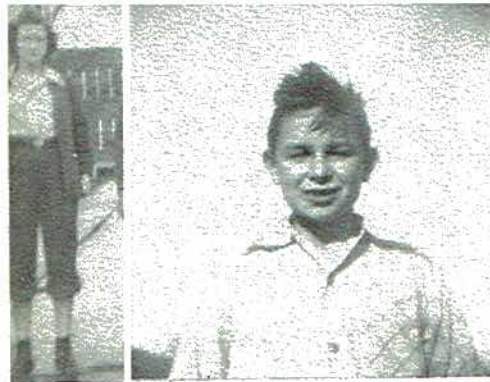




FRON  
les S  
Sec.  
SECC  
Smith  
TURE



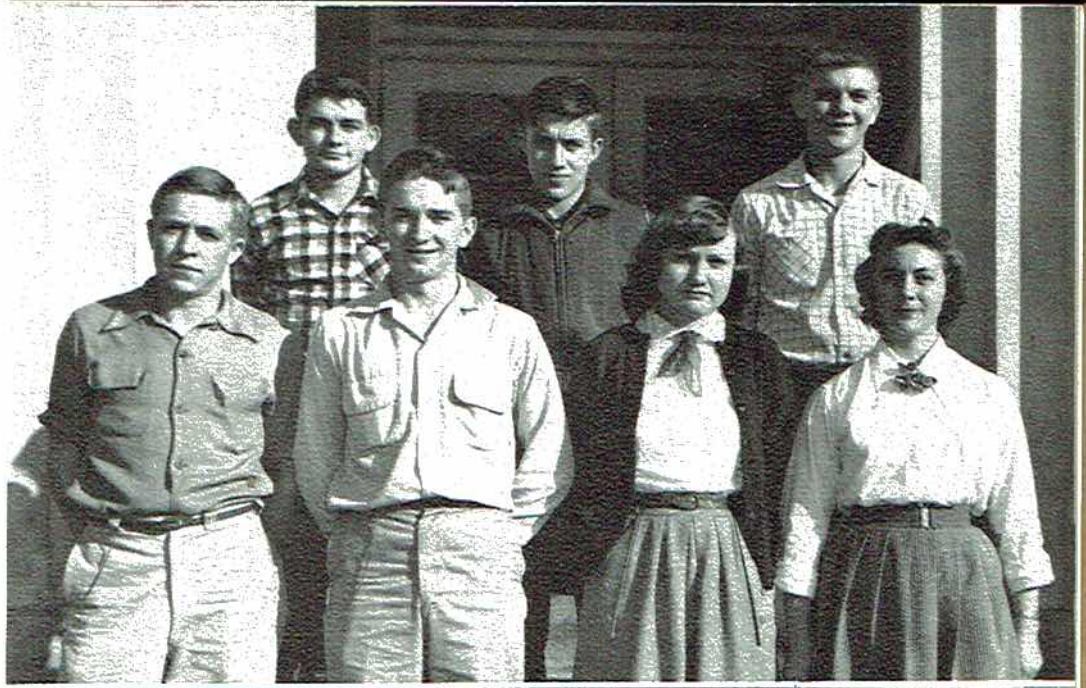
LEF  
Fram  
Ma  
Jen  
M.



LEF  
Mrs.  
Mrs.

# PHOTOGRAPHY CLUB

FRONT ROW: James Huber, Charles Smith, President; Rachel Evett, Sec. and Treas.; Myrtle Guffey.  
SECOND ROW: William Dean, Ray Smith, Dale Trammel. NOT PICTURED: Edwin Britt, W. C. Walker.



# LIBRARIANS

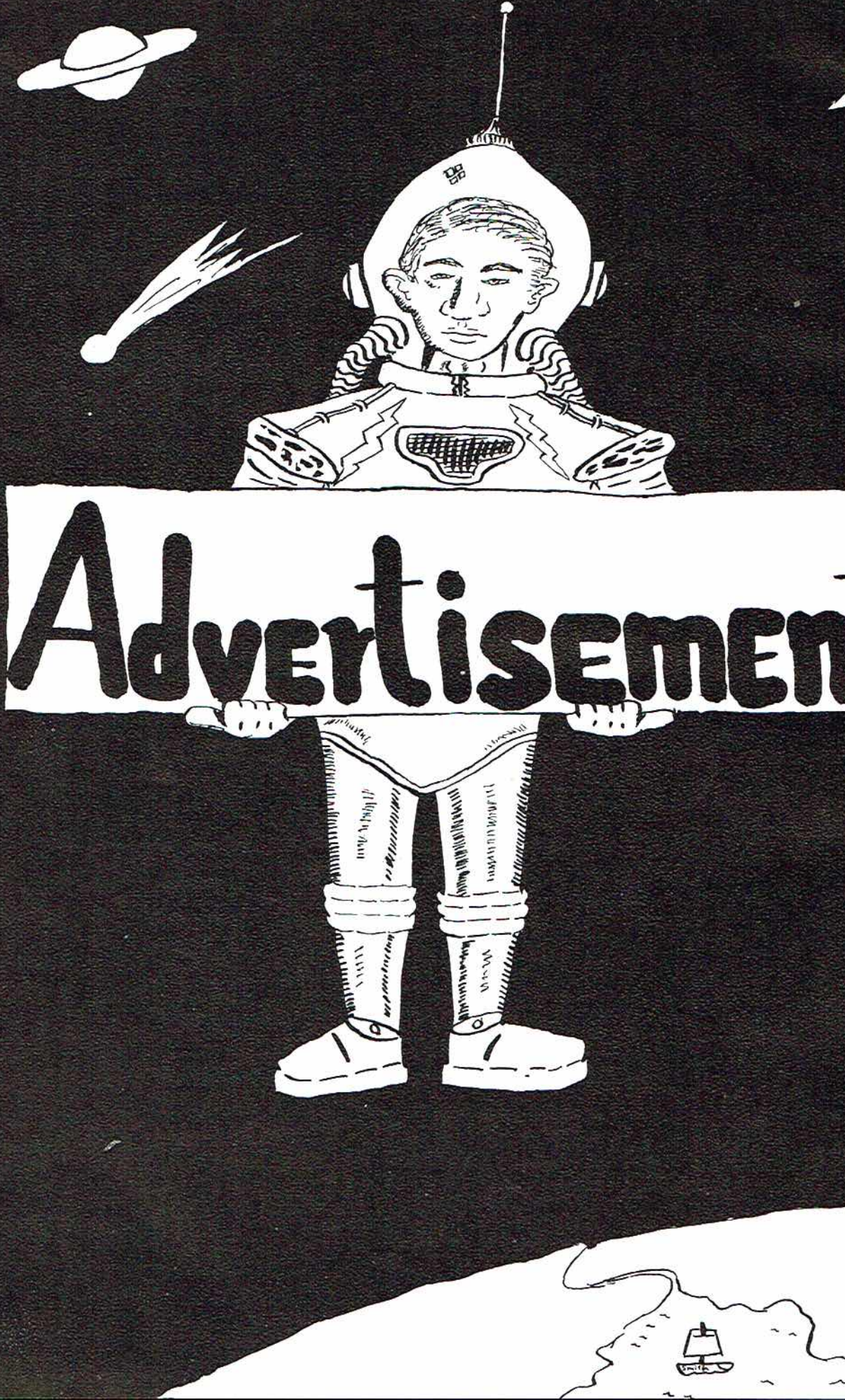
LEFT TO RIGHT: Barbara Gilliam, Frances Roach, Betty Fay Hancock, Mavis Lusk, Helen Howard, Shirley Jenkins, Pauline Whitehead, Mrs. M. G. Couch, Librarian.



# CAFETERIA STAFF

LEFT TO RIGHT: Mrs. L. E. Letson, Mrs. E. H. Proctor, Mrs. M. J. Keith, Mrs. Grace Hamlet.





Advertisements

**DAVIS CLEANERS**

Fancy Dry Cleaners

Phone 344-L

1000 Watts

1330 KC'S

**RADIO STATION WROS**

"The Magic Carpet for your  
Advertising Dollar"

717 Scott Street  
Scottsboro, Ala.

in the  
"Heart Of The Tennessee Valley"

Owned & Operated By

Mr. & Mrs. Hugh T. Kirby & Son

Personnel

Rose Kirby-Gen. Mgr. Hugh Kirby-Pres.

Clyde (Uncle Josh) Varner

Program Director

Bill Prickett-Chief Engineer

A. L. Samples-Manager

Hugh Thomas Kirby Jr. -Jr. Announcer

**B & G**

**BUTANE-PROPANE GAS CO.**

Cooking Heating

Refrigerating Water Heating

Congratulations

to the

Seniors

**DR. RALPH SHEPPARD**

Compliments

to the

Seniors

**THE FIRST**

**NATIONAL BANK**

Scottsboro, Alabama

Thanks to our

Advertisers For

their co-operation

**THE REMINDER STAFF**



**SCOTTSBORO AUTO PARTS**

Your NAPA Jobber

**WALES SUPER MARKET**

"Where Quality is High

and

Prices are Low!"

Scottsboro, Alabama

Compliments

of

**J. FRED HIMBURG**

O. D.

**ROUGH & TUMBLE FURNITURE  
COMPANY**

"The Little Man's Friend"

Phone 238-J

**PATRICK LUMBER CO.**

"Everything To Build Anything"

Dependable Quality

Since 1926

**SUE MAE'S HAT SHOP**

Hats & Accessories

for

Every Occasion

**HODGES DRUG STORE**

R. L.  
Hodges

Charles  
Hodges

Scottsboro, Alabama

Compliments

of

**W. J. WORD LUMBER CO.**

Phone 38

Compliments

of

**HOLLYWOOD CROSSROADS  
and BOB STARKEY**

Compliments

to the

Seniors

**YARBROUGH FURNITURE CO.**

**WORD THEATRES**

Your

Air Conditioned Ritz

Tawasentha & Rainsville

Drive Inn Theatres

Compliments

of

**WORD MOTOR COMPANY**

Oldsmobile

Chevrolet

Compliments

of

**LADIES & CHILDREN'S SHOPPE**

Scottsboro

# VARIETY BAKE SHOP

"A good place for a good snack

from Donuts

to Wedding Cakes"

Phone 424-J

Compliments

to the

Senior Class

**DR. SARAH E. ATCHLEY**

Optometrist

Compliments

of

**W. LOY CAMPBELL**

Compliments

of

Jackson County

New & Used Car Lot

**JOHNNY GARRETT**

**SCOTTSBORO HARDWARE CO.**

"The School's Friend"

Bendix Appliances

Phone 39

**JESSICA HOTEL**

"Home of Good Eats"

Phone 70

**WOODALL'S**

Ready-To-Wear

Phone 378-J

The Lad 'n Lassie Shop

Phone 315-J

**BOCANITA  
THEATRE**

Compliments

of

**MOTOR SALES**

Howard Thomas

**SCOTTSBORO  
FUNERAL  
HOME**

Phone 65

Tom Brown, R. A. Kennamer

E. K. Bergman

**BROWN, KENNAMER & BERGMAN  
INC.**

112 Broad St. Phone 94  
Scottsboro, Alabama

Frigidaire

Maytag

**BAMATUFT COMPANY**

Scottsboro, Alabama

Manufacturers

of

Chenille Bedspreads

**CALDWELL'S SUPER MARKET**

"A Good Place To Trade"

**WALES JEWELRY**

"Gifts That Last"

Scottsboro, Alabama

Phone 294

**RED HOT STORE**

Phone 210-J

Scottsboro, Alabama

- **PATRICK**
- **CUSTOMIZED**
- **PLAN SERVICE**

Located In

**PATRICK LUMBER CO.**

N. V. Ragsdale--designer

Scottsboro

**M. H. CAMPBELL TRACTOR CO.**

Ferguson Tractor & Imp.

Pontiac Dealer

Phone 234-J      Scottsboro

**BOBBIE'S BEAUTY SHOP**

"We need your head in our business"

Phone 5

Owner--Bobbie Manning

**FOSTER'S SUPER MARKET**

Staple & Fancy Groceries

Western Meats

Fresh Produce

Frozen Foods

Phone 488

**THOMAS DRUG STORE**

Wm. T. Thomas R. Ph.

Prescriptionist

Phone 115

Scottsboro, Alabama

Compliments

of

**V. J. ELMORE**

5, 10 Cent & \$1.00 Stores, Inc.

Scottsboro, Alabama

**DARWIN'S**

Popular Priced Merchandise

**ANN'S**

**CAFE**

Compliments

of

**SCOTTSBORO JEWELERS**

Phone 290-L

# REID'S SUNDRIES

USE

**GULF REFINING CO.**

**PRODUCTS**

**DEAN'S**

Happy Valley Dairy

Grade A

Homogenized - Pasteurized  
Chocolate Milk  
Cottage Cheese      Ice Cream

Phone 496-J

Compliments  
of

**JEFF'S APPLIANCES**

Compliments

of

Mr. & Mrs. J. B. Presley

**FIVE POINTS MOTEL**

**FARMER'S**

**GIN CO.**

Hollywood, Alabama

**OK RUBBER WELDERS**

"Complete Tire Service"

**C. A. WILSON STORE**

Wilson's Rolling Stores

"Jackson County's

Finest Country Stores"

Fackler, Alabama

Compliments

of

**BLACKWELL'S FEED & SEED STORE**

Wayne Feed

Phone 77

**W. PAUL BREWER AGENCY**

"All Kinds of Insurance"

McAnally Bldg.

Compliments

of

**DAIRY KING**

**FACKLER GIN CO.**

Fackler

Alabama

**THE HARRIS STORE**

General Merchandise

Hollywood, Alabama



Compliments

of

**STONE'S DEPARTMENT STORE**

"Home of Quality Merchandise"

Formerly Skidmores

**GUY HOLLIS TELEVISION &  
SUPPLY CENTER**

Hotpoint RCA Victor Zenith

Scottsboro Hotel Bldg.

**JULIAN HAMBRICK'S GIFT SHOP**

Scottsboro, Alabama

**I. E. AIRHEART & SON**

Phone 509

Scottsboro, Alabama

**E. S. HOLLIS**

Wearing

Apparel

L. L. Boyd H. A. Merideth

**BOYD-MERIDETH MOTORS**

Dodge & Plymouth Cars

Parts and Service

Scottsboro, Alabama

Compliments

of

**BUTLER AND KENNAMER  
WHOLESALE COMPANY**

Compliments

of

**ALABAMA OIL COMPANY**

Compliments

of

**M. Y. F.**

of the

**FIRST METHODIST CHURCH**

**BENHAM'S UNDERWEAR MILL**



"WHERE CHRIST and CHRISTIANS MEET. "

"He that findeth his life shall lose it: And he that loseth his life for my sake shall find it."

--Christ, Matthew 10:39

The statement above, given by Christ, appears to contradict itself. When it is subjected to deeper examination, it merely declares with well-directed force the teaching of the Word of God in countless numbers of places. Christ is stressing the cultivation of an attitude of self-sacrifice and self-denial. He is teaching the desirability of placing one's self in the background and making service to Christ paramount in every phase of activity.

It is especially appropriate that young people give proper consideration to this verse as they embark on life's journey, accepting with faith and courage the challenges of a troubled and turbulent world.

If you would desire the heart of happiness, it is suggested here that you follow the teaching of this text by losing yourselves in these things, which God's Word teaches with authority: (1) A respectable occupation. (Rom. 12:11) Satisfaction should be considered along with respectability and uprightness. (2) A Happy marriage based on wise decisions. (Timothy 5:14; Ephesians 5:23-32) One must give proper concern to faithfulness to God and his or her mate to obtain the heart of happiness. (3) Spiritual security. (Matt. 16:26; 2 Peter 1:5-10) There is not spiritual security short of an obedient faith in Christ, since there is no salvation in any other. (Acts 4:12) (4) Service to others. (Matt. 20:26; Phillipians 2:3-4) The successful Christian must seek to serve, rather than to be served. Christ's plan demands regard for others in preference to one's self, as is demonstrated by Matt. 7:12.

Churches of Christ wish to each student and to all who shall behold these words the best in Christian living, that you may receive and enjoy the best which life and death have to offer.

## CHURCH OF CHRIST

BROAD STREET AT CHARLOTTE AVENUE

SCOTTSBORO, ALABAMA