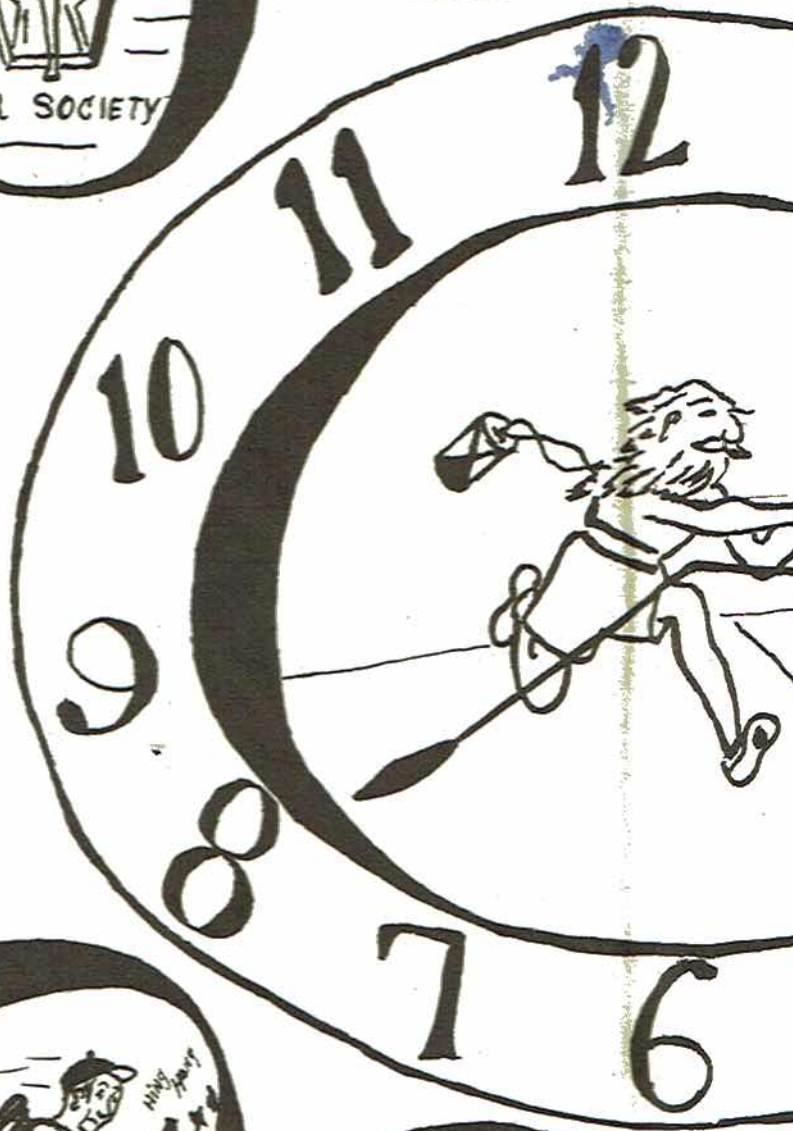


THE REMINDER

41





The REMINDER

1 9 4 1

YEARBOOK OF JACKSON COUNTY HIGH
SCOTTSBORO, ALABAMA



Foreward . . .

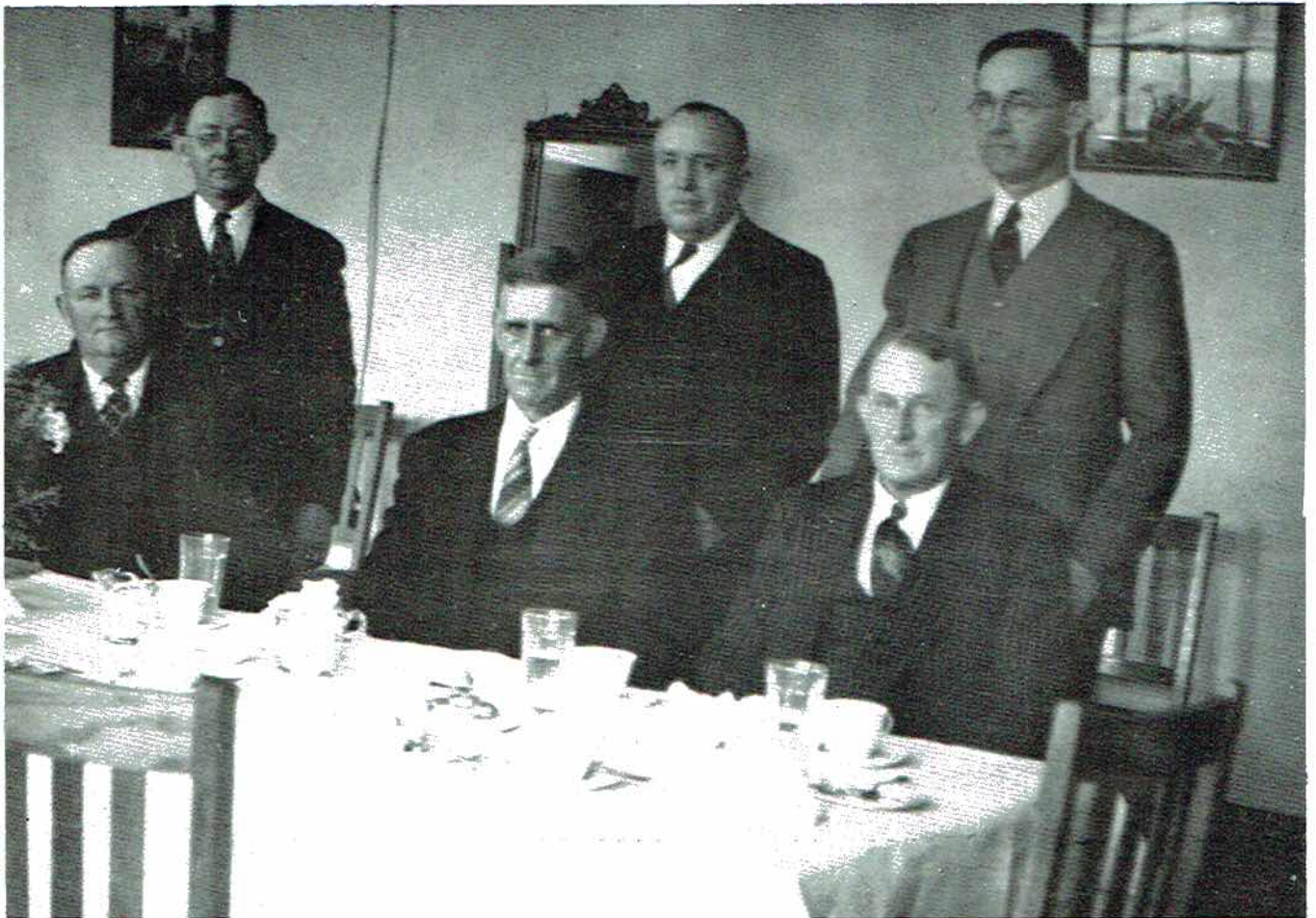
We present a record of how we spend a day in J. C. H. S. From the time we hurry down the hall to session room until we fall asleep over our homework at night, this is our day. As the hands of the clock turn, we go to classes, meet clubs and practice band. Before we know it the hands point to the inevitable hour when we must go through this routine for the last time. Therefore, in order that we may not forget the hours spent together here, we keep the story as told by pen and camera.

The chronicle begins with homeroom. Then, as usual, we go to classes and to clubs at activity period. Here, we are forming a line in the cafeteria; there, we are studying in the library. Perhaps we go to a football game, or maybe it's a play by the Junior Class. All day we work and play together, learning from books and learning from experience. We are proud of our accomplishments, but we realize our shortcomings. So we have compiled all our activities as they unfold themselves in the course of a day, in a record that, we hope, portrays the true spirit of J. C. H. S.

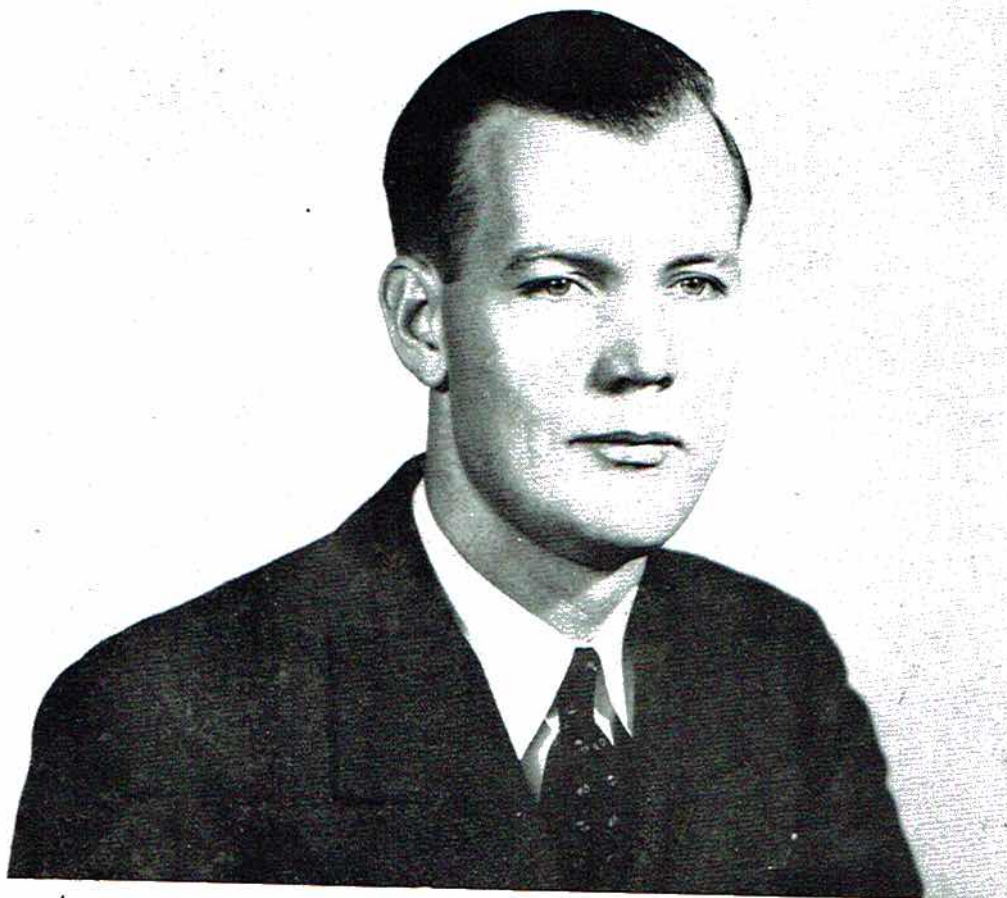
DELL CLOPTON, Editor

C. D. PRESLEY, Business Manager

COUNTY BOARD OF EDUCATION—Seated, Left to Right: L. S. Brewster, Felix Trice, G. H. Caperton . . .
Standing, Left to Right: Wiley Butler, E. D. Harper, Chairman; L. W. Jordan, Superintendent.



JACKSON COUNTY HIGH SCHOOL



to MR. COBURN THOMAS

That we may pay sincere homage to one whom we admire and respect, to one whose counsel has been helpful to us, and to one whose interest in us has been manifested by his many efforts in our behalf, we inscribe this volume of the Reminder to Mr. Coburn Thomas.

CLASS OF '41.

DEDICATION

THE GUIDING LIGHTS

The Faculty

MRS. MABEL BAILY, Secretarial Studies . . . A. H. BORDEN, Science . . . ELMER COCHRAN, Physical Education.

MISS ANNA RUTH DICUS, Junior Mathematics . . . MISS BETTY LEE DANIEL, English . . . J. B. FOLEY, Science, Band Director.

MRS. LYLES HEMBREE, Music . . . WILLIAM HUDDLESTON, English, French . . . MRS. RUDOLPH JONES, Occupations.

MRS. DELLA McCRRARY, English, Librarian . . . MISS ERNESTINE MANN, English, Social Studies . . . H. E. PHILLIPS, Agriculture.

MISS KATHLEEN SEALE, Social Studies . . . RAMSEY O. SCOTT*, Economics, History . . . COBURN THOMAS**, Economics, History . . . MRS. JANE HODGES THOMAS, Physical Education.

MRS. BOYD TURNER, Home Economics . . . MRS. ANTOINETTE WATSON, Mathematics . . . RAY WEDGEWORTH, Director of Athletics, Occupation.

*Second Semester.

**First Semester.

C. P. NELSON, Principal, Bookkeeping Secretary, Eighth District, A.H.S.A.A.



Classes

1941 REMINDER



Seniors '41

REMINDER



GENE AIRHEART—Sportsmanship '38; Hi-Y, Sportsmanship '39; Dramatic, Glee, and Joe Wheeler '40; Secretary and Treasurer of Senior Science, Annual Staff '41 . . . BOYD ANDERSON—F. F. A. '38, '39, '40, '41 . . . EUNICE BEARD—Variety Club '38; Sportsmanship '39, Band, '40, '41.

JANE BENSON—F. H. A. '38; F. H. A., Band '39; Dramatic, Glee, Band, May Court '40; Band '41 . . . JAMES A. BENTLEY—Sportsmanship '38; Senior Science '39, '40; Vice-President Senior Science, Senior Play '41 . . . JONES BISHOP—F. F. A. '38, '39; Joe Wheeler '40; "J" Club '41; Football '41.

SHIRLEY BOYD—Sportsmanship '38; Secretary of Girl Reserve '39; Glee, Dramatic, Treasurer of Girl Reserve, Junior Play '40; Secretary of Girl Reserve '41 . . . A. B. BRANDON—Sportsmanship '38; "J" Club '39, '40; President of "J" Club '41; Football '39, '40, '41; Alternate Captain '41; Class President '40 . . . LAURA BRAZELTON—Senior Physical Education '39, '40, and President '41.

ROBERT RUSSELL BRIDGES—Science '38; President of Band, Junior Play '40; Annual Staff, Senior Play, Band, Who's Who '41 . . . ELIZA BRYANT—Senior Science '39; Senior Physical Education '40, '41 . . . FORESTINE BRYANT—F. H. A. '39; Glee, Dramatic, F. H. A., May Court, Junior Play '40; Cheerleader, Annual Staff, F. H. A. Queen, Senior Play, President of F. H. A. '41.

ANNA RUTH BULLARD—F. H. A. '38; Girl Reserve '39, '40, '41 . . . FRED BYNUM—F. F. A. '38, '39, '40 and '41; Secretary of F. F. A. in '40 . . . JANE CAMPBELL—Citizenship '38; Girl Reserve '39; N. H. S., Glee Club, Girl Reserve '40; Secretary of N. H. S., Girl Reserve '41.



VELMA CARTER—Secretary and Treasurer Sportsmanship '38; Vice-President Sportsmanship '39; Secretary Sportsmanship, Junior Play '40; Secretary Senior Discussion, N. H. S., Senior Play '41 . . . ELIZABETH DELL CLOPTON—Sportsmanship '38; Vice-President Girl Reserve '39; President Girl Reserve, Dramatic, Glee Club, N. H. S. Music Medal, Annual Staff, Junior Play, Dramatic Club Play, News Staff '40; N. H. S., Editor of Annual, News Staff, Senior Discussion Club, Who's Who '41 . . . MILDRED COLLINS—Sportsmanship '38; Girl Reserve '39; Band, May Court, Vice-President of Girl Reserve '40; Girl Reserve '41.

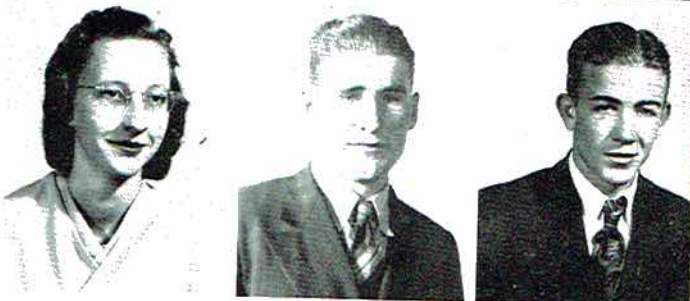
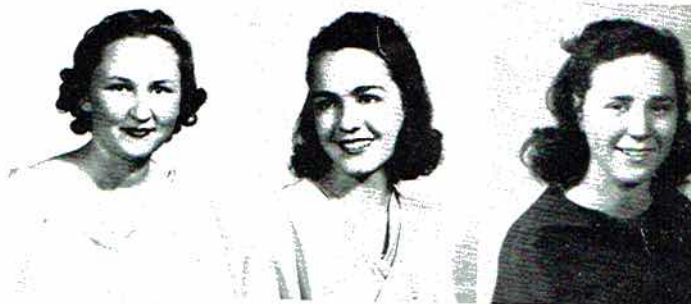


HAZEL CRYE—F. H. A. '39, '40, '41 . . . ROBERT DAVIS—F. F. A. '39, '40, '41 . . . LORENE DOLBERRY—Physical Education '38, '39; F. H. A. '40, '41.

LOUISE FENNELL—Physical Education '38; Girl Reserve '39, '40, '41; N. H. S. '40, Vice President N. H. S., Assistant Editor of Annual '41; Secretary and Treasurer of Class '39, '41 . . . AARON FOSSETT—Senior Science '39; Senior Science, News Staff '40; President Senior Science, Annual Staff, Who's Who '41 . . . RODNEY GENTLE—Sportsmanship '38; Science '39; Band '40; Senior Discussion, Annual Staff '41.

WIB GENTLE—F. F. A. '38; Football '39, '40; "J" Club '39; Vice-President "J" Club '40; "J" Club '41 . . . A. G. GILBREATH—F. F. A. '39, '40, '41; Secretary F. F. A. '40 . . . EUPHIE HALL—Senior Physical Education '40; Senior Discussion '41.

VINNIE HAMILTON—Physical Education '39; F. H. A. '40; Senior Discussion '41 . . . LILY KATE HENEGAR—Senior Physical Education '40, '41 . . . FLORA DELL JOHNS—F. H. A. '39, '40, '41; Vice-President F. H. A. '40.



Seniors '41

REMINDER



FRANK KEOWN—Science '38, '39; Band and Glee Club '40; Band '41 . . . GRACE McBRIDE—Sportsmanship '38, '39; Commercial '40, '41 . . . LULA McCAMY—Science '38, '39, '40, '41.



IMOGENE McCRARY—Physical Education '38; Girl Reserve, May Queen '39; Band, Dramatic and Glee Club, May Court '40; Senior Discussion '41 . . . RUTH McCUTCHEON—Treasurer Sportsmanship '38; Girl Reserve '39; Band, Dramatic, Glee, Vice-President of Class '40; Band, Senior Discussion '41 . . . CLYDE McEMORE—Science '38, '39, '40; N. H. S. '40; Treasurer N. H. S., Senior Discussion '41.



ELEANOR MILLER—Sportsmanship '38, '39; Girl Reserve, May Court, News Staff '40; Girl Reserve, Who's Who '41 . . . TRESTLER MOORE—Sportsmanship '38; F. F. A. '39, '40; President F. F. A. '41 . . . FLORA NICHOLS—Girl Reserve, Glee '40; Vice-President Girl Reserve '41.



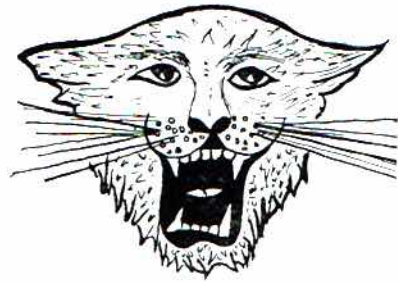
HAROLD NYE—Hi-Y '39; Band, Dramatic, Glee '40; Band Reporter '41 . . . HAZEL OLINGER—Physical Education '38; Science '39, '40; Physical Education '41 . . . KATHLEEN PASS—Commercial '40; Physical Education '41.



SUE PATRICK—Sportsmanship '38; Girl Reserve '39; Band, Dramatic, Glee, N. H. S., Junior Play '40; President Band Club, Reporter N. H. S., Senior Play, Annual Staff, News Staff, Who's Who '41 . . . LUCILLE PAYNE—F. H. A. '39, '40, '41, Who's Who '41 . . . JAMES PAYNE—F. F. A. '39, '41; Vice-President F. F. A., Glee, Band '40; Vice-President F. F. A., Football, Band '41.



DUB PHILLIPS—"J" Club '39, '40, '41; Basketball '39, '40, '41; Football '38, '40, '41; Who's Who '41 . . . LENA MAE PHILLIPS—Sportsmanship '38, '39; Senior Physical Education Club Reporter '40; Senior Physical Education Club '41 . . . CHARLES DAVID PRESLEY—Science Club, F. F. A. '39; Joe Wheeler, Debating, Dramatic, Glee Club '40; Discussion Club, Business Manager of Annual '41.



A. P. PRICE—Science Club '38, '39; President Senior Science Club, Band '40; Vice-President of Band Club, N. H. S. '41 . . . JOHN PRICE—Sportsmanship '38; Hi-Y '39; Science '40, '41 . . . JOSEPHINE ROACH—Physical Education '38; Girl Reserve '39; Secretary of Girl Reserve, News Staff '40; Girl Reserve, Annual Staff '41.



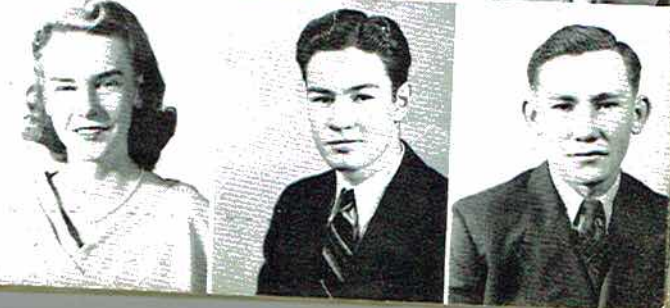
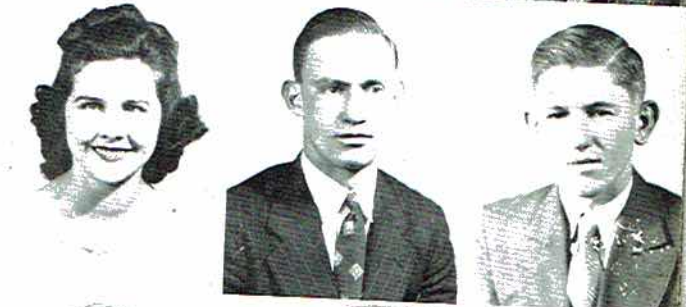
LEBRON ROOKS—"J" Club '40, '41; Basketball '40, '41 . . . MARIE RYAN—F. H. A. '39; Girl Reserve, Dramatic, Glee Club, Dramatic Club Play '40; Girl Reserve, Senior Play '41 . . . FRED SANDERS—Sportsmanship '38; Science Club '39; Glee Club, Joe Wheeler, Band '40; Band '41.



PAULINE SELBY—Dramatic Club '38; Girl Reserve '39; Sportsmanship, Glee Club, May Court '40; Librarian, F. H. A. Club '41 . . . GUS SENTELL—"J" Club '38, '39; Secretary of "J" Club '40; Vice-President of "J" Club, Captain of Football '41; Football '37, '38, '39, '40 . . . ALFRED SMITH—F. F. A. '38, '39, '40, '41.



FRIEDA SMITH—Sportsmanship '38; Girl Reserve '39; Secretary and Treasurer of Band Club, Dramatic and Glee Club, Dramatic Club Play, Junior Play '40; Band, Librarian, Annual Staff '41 . . . W. L. SMITH—Hi-Y Club, "J" Club, F. F. A., President of Class '39; "J" Club, Dramatic Club, Junior Play '40; "J" Club, Senior Discussion '41 . . . JOHN MILTON STOCKTON—Sportsmanship '38; Hi-Y, Vice-President of Class '39; Secretary and Treasurer of Science Club, N. H. S., Junior Play, Annual Staff '40; President of Class, President of N. H. S., Senior Discussion, Senior Play, Annual Staff '41.



Seniors '41

RE M I N D E R

MARY KATHERINE SUMNER—Dramatic Club '38; Sportsmanship '39; Girl Reserve '40; Girl Reserve '41 . . . EDWARD SWAIM—F. F. A. '38; "J" Club '39, '40, '41; Football '39, '40, '41 . . . EARL TIPTON—F. F. A. Club '39, '40; District Secretary F. F. A. '41.

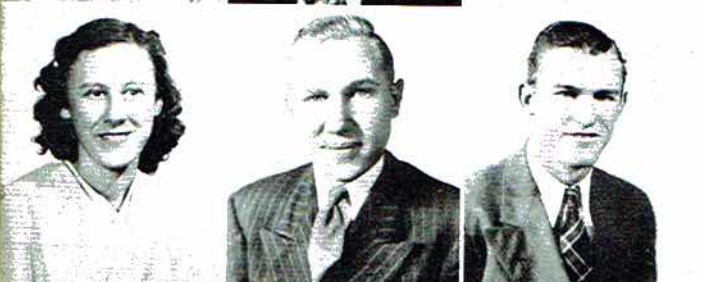
J. MORGAN THOMAS—F. F. A. Club '39, '40, '41 . . . MARGIE THOMAS—Sportsmanship Club, Dramatic and Glee Club, Junior Play '40; Senior Discussion '40 . . . RUTH THOMAS—Sportsmanship '38; Girl Reserve '39, '40; Treasurer of Girl Reserve '41.

BERNICE UTTER—Dramatic Club '38; F. H. A. Club '39, '40; Librarian and F. H. A. Club '41 . . . LENA WALLINGSFORD—Senior Physical Education '39; Girl Reserve '40; Girl Reserve, N. H. S. '41 . . . FAYE WANN—Physical Education '39; Girl Reserve, N. H. S., May Court '40; President Girl Reserve, Reporter of Class, N. H. S., News Staff, Annual Staff '41.

ALICE WHITE—Dramatic Club '38; Librarian, Sportsmanship '39; Vice-President of Sportsmanship, Librarian '40; Senior Discussion '41 . . . WILBURN WILLIAMS—"J" Club '39, '40, '41; Football '39, '40, '41 . . . MARY WININGER—Physical Education '38; F. H. A. Club '39; Joe Wheeler '40; Senior Discussion '41.

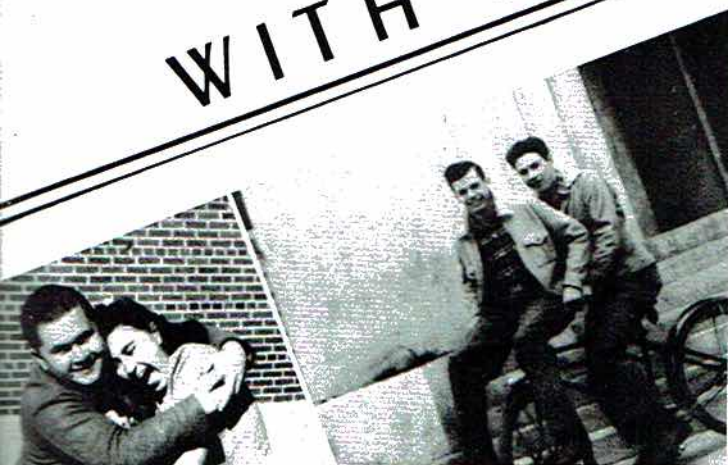
OLLIE WOMACK—Physical Education '39, '40, '41 . . . BROOKS WOODALL—Science Club '38; F. F. A. '39, '40, '41; Annual Staff '41 . . . REX WORD—Science Club '39; F. F. A. '40, '41.

LILLIAN WYNNE—Physical Education '38; Dramatic Club '39; Joe Wheeler, N. H. S. '40; Senior Discussion, N. H. S., Who's Who '41 . . . LYDIA WYNNE—Physical Education '38; Dramatic Club '39; Secretary and Treasurer Joe Wheeler, N. H. S. '40; Senior Discussion, N. H. S., Who's Who '41.



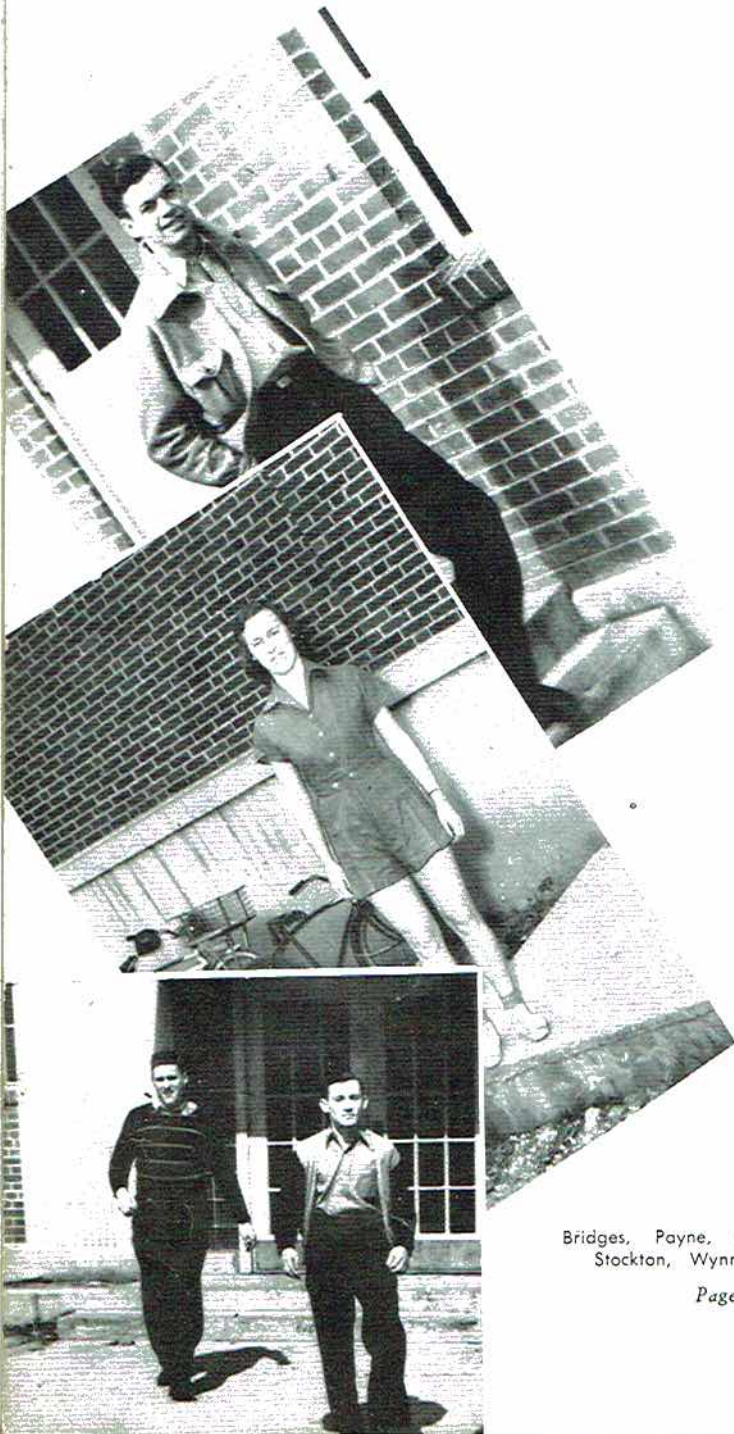
SENIOR ACTIVITIES

WITH THE BIG SHOTS



WHO'S WHO

Here he is, girls—he's a ladies' man; Bubs' reputation as a Romeo made him a cinch for "most popular boy." As for Sue, better known as "runt", there has been a close race for her between two certain Seniors for years. Eleanor and Aaron represent the spirit of the Senior Class and we can wish them no better luck than that they always keep the record they have made in high school. Our best citizens are Faye and John Milton and any school would be proud to have them listed in its alumni. Yes, they are both envied "A" students. It is impossible to separate the twins, because one



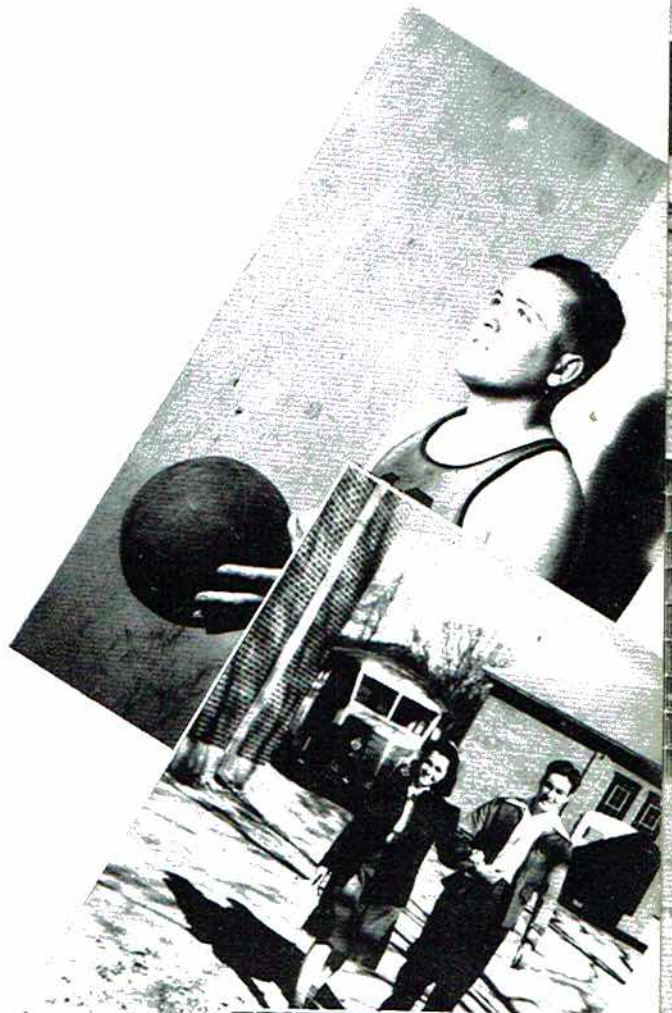
Bridges, Payne, Fossett and Stockton, Wynne Twins.

Page Twelve



...AND WHY

is just as ambitious as the other, and together they represent a lot of ambition. Most of us Seniors are still wondering how to tell them apart. John Milton really gets the orchids and no more than he deserves; he is not only the "best citizen" but "most ambitious" as well. And aren't we proud of our athletes? Everybody who has played against Lucille knows what a mean basketball she throws. About Dub, what more need be said than that he has made all district for the last three years. Beauty speaks for itself.



Miller, Wann and Patrick, Clifton and Smith, Phillips.

COPY READERS

EDITORIAL STAFF

Mr. William Newman Huddleston Faculty Advisor
Louise Fennell Associate Editor
Robert Robertson Sports Editor
Rodney Gentle Art Editor
Frieda Smith, Josephine Roach, Faye Wann,
Aaron Fossett Senior Compiling Staff
Mary Evelyn Presley Senior II Representative
Margaret Ellen Davis Senior II Representative



Fossett
Presley
Davis
Smith
Roach
Wann
Fennell
Robertson
Gentle

DELL CLOPTON—Editor-in-Chief

AND FINANCIERS

BUSINESS STAFF

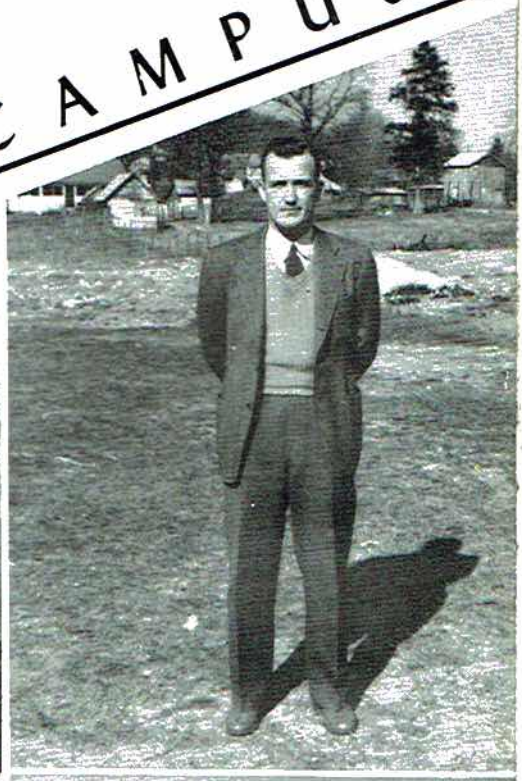
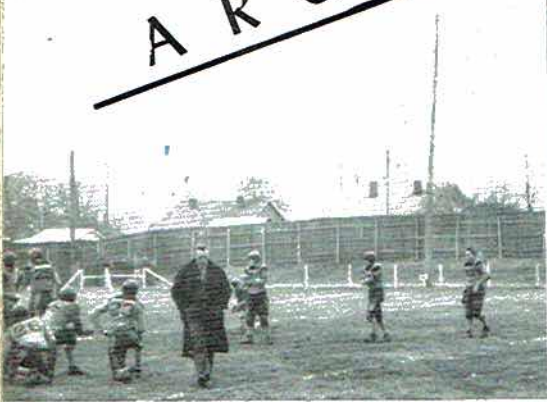
John Milton Stockton Subscription Manager
Brooks Woodall Subscription Manager
Forestine Bryant Advertising Manager
Sue Patrick Advertising Manager
Gene Airheart Advertising Manager
Robert Bridges Advertising Manager
Horton Devers Senior II Representative
Billie Madge Word Senior II Representative
Frank Henshaw Senior I Representative



Devers
Word
Henshaw
Patrick
Airheart
Bridges
Stockton
Woodall
Bryant

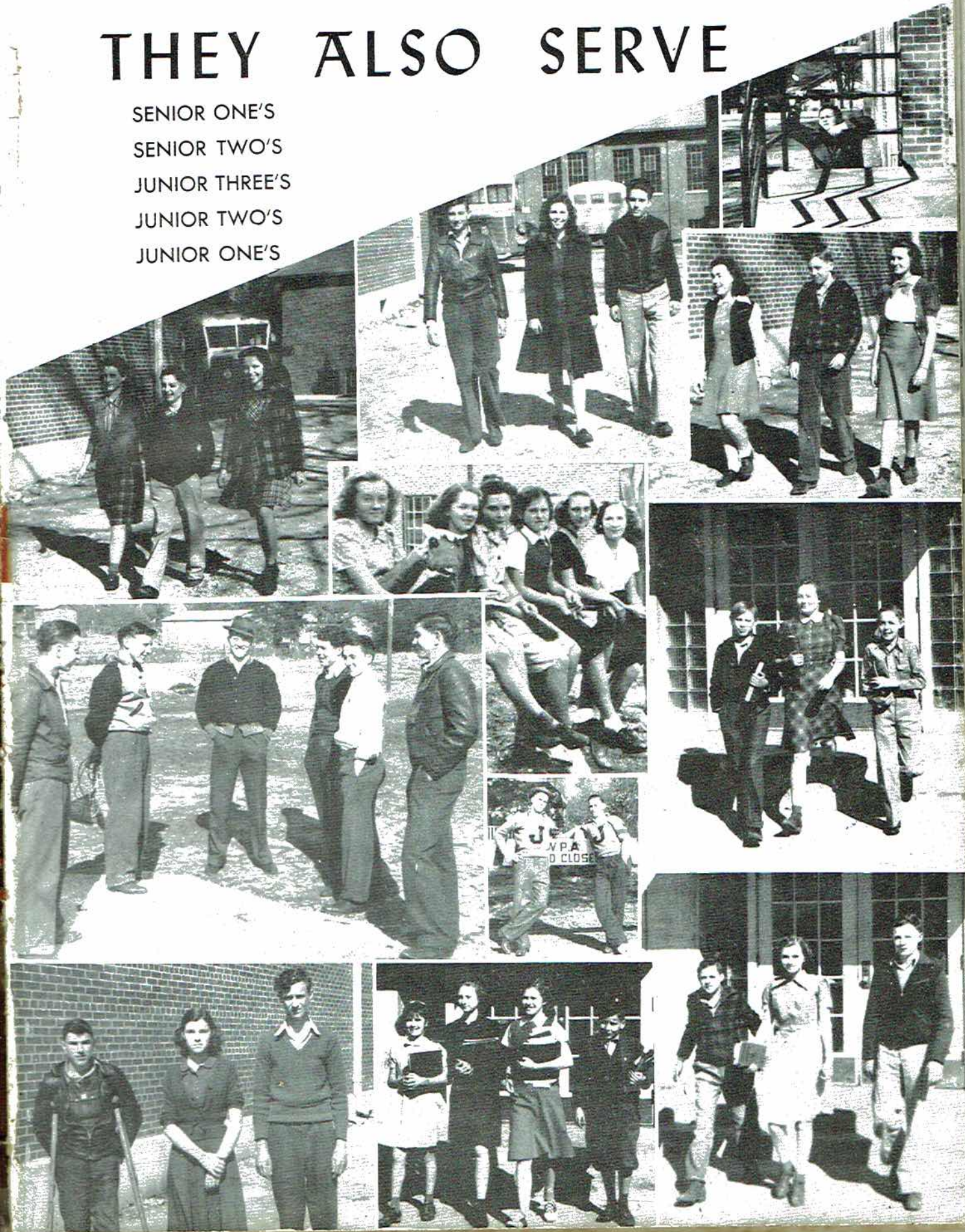
C. D. PRESLEY—Business Manager

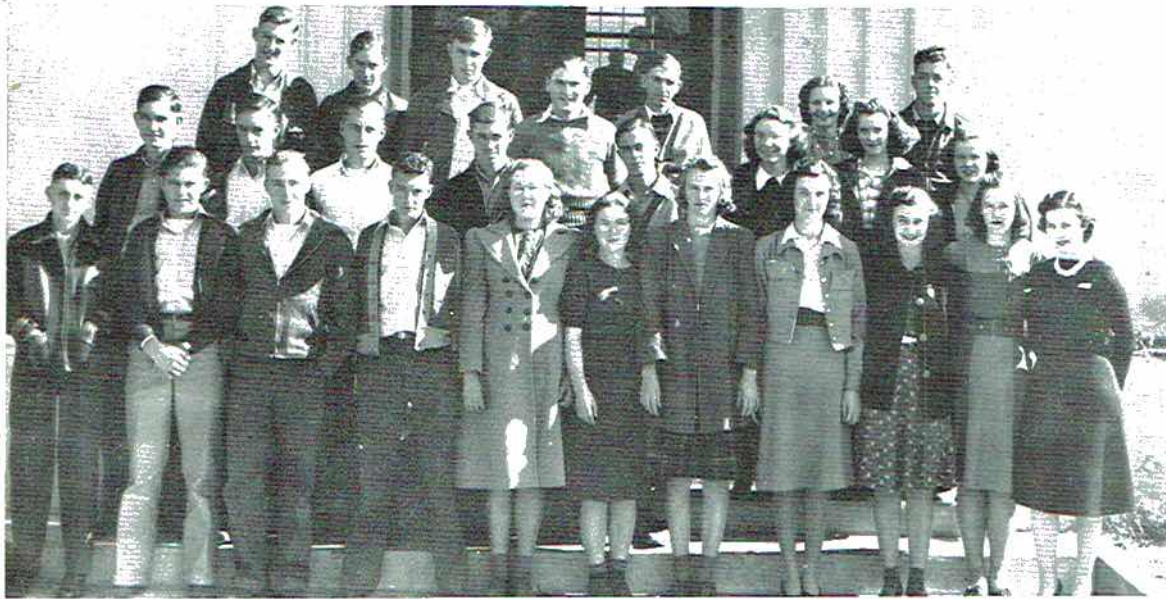
AROUND THE CAMPUS



THEY ALSO SERVE

SENIOR ONE'S
SENIOR TWO'S
JUNIOR THREE'S
JUNIOR TWO'S
JUNIOR ONE'S





S
E
N
I
O
R

T
W
O

Our Successors

SENIOR II

MRS. BAILEY

President	Clarence Penny
Vice-President	Doyle Gist
Secretary and Treasurer	Lois Pendergrass

Richard Anderson, Beneford Bell, Berith Bradford, Isaac Brandon, James Brazelton, Kenneth Brewster, Mary Allie Brown, Elton Gaston, Christine Cowley, Edna Lou Crawford, Robina Davis, Floyd Fossett, Harry Frazier, Thomas Freeman, Doyle Gist, Stanley Green, Walter Latham, Nier Ellie McKenzie, Hassel Nichols, Lois Pendergrass, Clarence Penny, Helen Shelley, Jim Talkington, Thelma Thrasher, Ethelene Tigue, Margaret Williamson, Nannie Lee Womack.



SENIOR II

MRS. THOMAS

President	Horton Devers
Vice-President	Hugh Boyd Campbell
Secretary and Treasurer	Rozanne Cox

Joe Emmett Barber, Tommy Bellomy, J. C. Bishop, Louise Bohanon, Hugh Boyd Campbell, Mary Kate Carter, Shirley Carter, Rozanne Cox, Margaret Ellen Davis, Mozell Dawson, Horton Devers, Jack Gayle, Charles Giddons, Jack Harris, Quillion Hilley, Lillian Honey, Lyles Johns Dimple Johnson, John Law, Mabel Long, Jessie Lee Machen, Jerry Meek, Earline Morris, Jay Page, Erskn Parks, Becil Patterson, Mary Evelyn Presley, Frances Sampson, Edna Staton, Lois Staton, Mary Nell Sumner, Rachel Taylor, June Thomas, Bryce Woosley.



SENIOR II

MR. WEDGWORTH

President	Ruby Foshee
Vice-President	Evelyn Money
Secretary and Treasurer	Billie Madge Word

Rayford Ashmore, Dot Blevins, Preston Bryant, Sanders Bryant, Kathlee Bulman, Ester Mae Carson, Clayton Carter, Bill Cornelison, Philip Cornelison, Nellie Tom Duncan, Annie Mae Evans, Ruby Foshee, Cornelia Hancock, Bobbie Henshaw, Pauline Holder, Marie Johns, Dan Kelley, Ben Kirby, Louise Lockard, Granville Martin, Kathleen McDonald, Lester McGuffey, John Ed Michaels, Evelyn Money, Alda Florence Petty, Mary Ruth Proctor, Kathleen Rice, Jack Rousseau, Bonnie Russell, Opalea Sentell, Bobby Smith, Jimmy Snodgrass, Billy Mack Womack, Billie Madge Word.





S
E
N
I
O
R

O
N
E

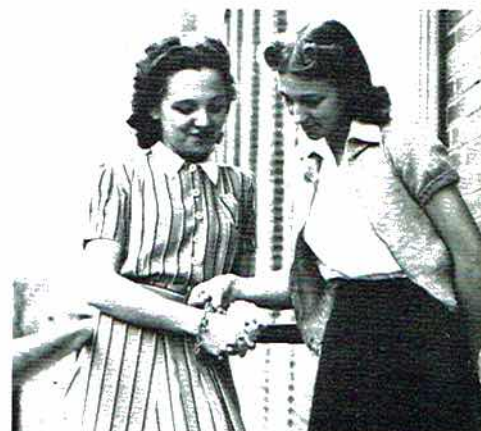
Hopefuls of '43

SENIOR I

MR. HUDDLESTON

President	James R. Robertson
Vice-President	Robert Harris
Secretary and Treasurer	Laura Mae Chafin

Pearle Bellomy, William Blizzard, Ola Mae Brandon, Veda Brandon, Isabelle Bulman, Nora Lee Campbell, Annie V. Carter, Billy Carver, Laura Mae Chafin, Wiley Dulaney, Jr., Lilly Ann Fennell, James Gambell, Jr., Ed Garner, Sallie Mae Gilbreath, Tressie Harper, Bill Harris, Robert Harris, Nadine Hilley, Bebe Jones, Leonard Latham, Marie Lipscomb, Vera June Lloyd, Isaac Lockey, Bettye Patterson, James R. Roberston, Robert Rousseu, Helen Staton, Billy Stewart, Bobby Stewart, Ila Sumner, Alice Taylor, Mary Ellen Thomas, James Wallace, Billy Webb, Ethel Welch.



SENIOR I

MRS. WATSON

President	J. W. Floyd
Vice-President	Richard Patrick
Secretary and Treasurer	Jep Moody

J. T. Allen, Ruby Allen, Verma Chloe Beam, Ruth Beard, Marvin Bryant, Grace Bynum, Kathryn Carter, Raymond Carter, Curtiss Clark, Winniver Connally, Rose Cotton, Barnard Davis, Gladys Flippo, J. W. Floyd, Willis Henshaw, Exie Faye Hicks, Claude Hurt, John Jarnagin, Jr., Denford Johnson, Harold Kenamer, Ruby Kirby, Betty Sue Linville, Lloyd Lockard, Marie London, Linnie Milbian, Jep Moody, Hester Mae Myers, Fred Osburn, Grace Owens, Stanley Paradise, Richard Patrick, Annie Louise Russell, Ruth Shiflett, Laura Nell Smith, Albert Ward, Jo Woodall.



SENIOR I

MRS. TURNER

President	Hilda Stewart
Vice-President	Juanita Flowers
Secretary	Laura Mitchell
Treasurer	Mack Smith

Marie Adams, Annie Lee Barber, Edward Bergman, Jim Breland, Cleo Broadway, J. S. Carter, Alma Elliott, Juanita Flowers, Bobby Griffith, Geneva Harris, Wilfar Haynes, Frank Henshaw, W. H. Hill, Louis T. Kirby, Virginia Lindsay, Sara Martin, Maggie Mae Miller, Paul Miller, Laura Mitchell, Betty John Morris, Inez Morris, Martha Nichols, Alva Nix, Sam Potter, Mary Lee Richie, Winnie Sisk, Mack Smith, Hilda Stewart, Maxine Strickland, Robert Sumner, Inez Talley, Mary Ruth Tipton, Susie Williamson.



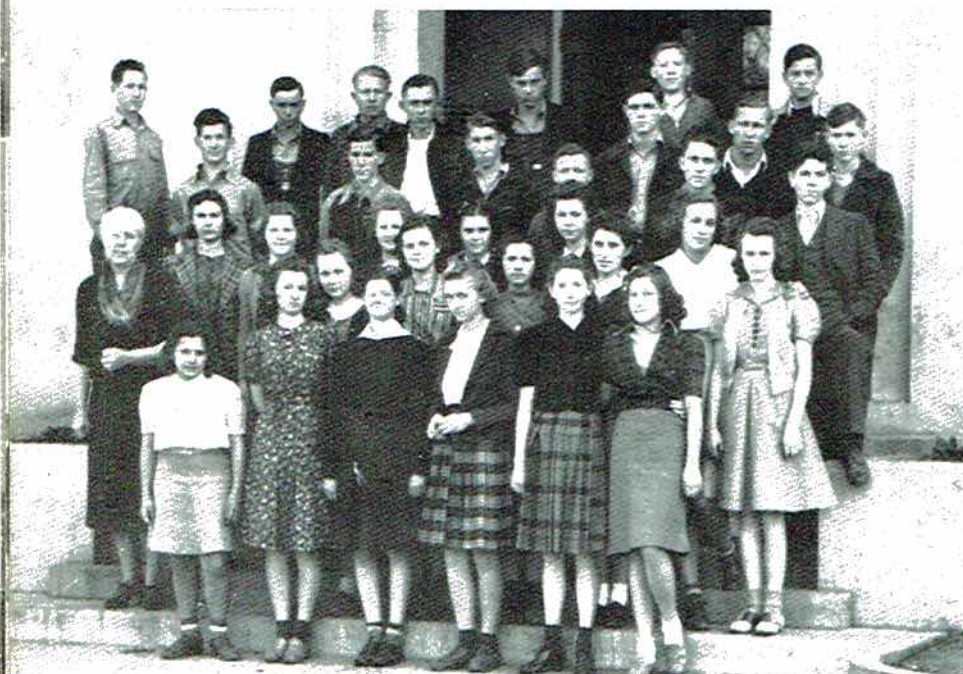
JUNIOR HIGH

The "age of innocence" of high school life may well be applied to the students of Junior High.

Some of them travel for miles on a crowded bus, only to be sat upon and generally abused by the Senior High students.

As Junior One's, we see them lost in the hallways and popping in the wrong doors. As Junior Two's we recognize them as those who know all; they have been transformed from their quiet and humble state to the loudest chatter-boxes and announcement-makers in school.

In Junior Three, our students are beginning to come of age. They have taken their places on the athletic teams and in the many activities of student life.

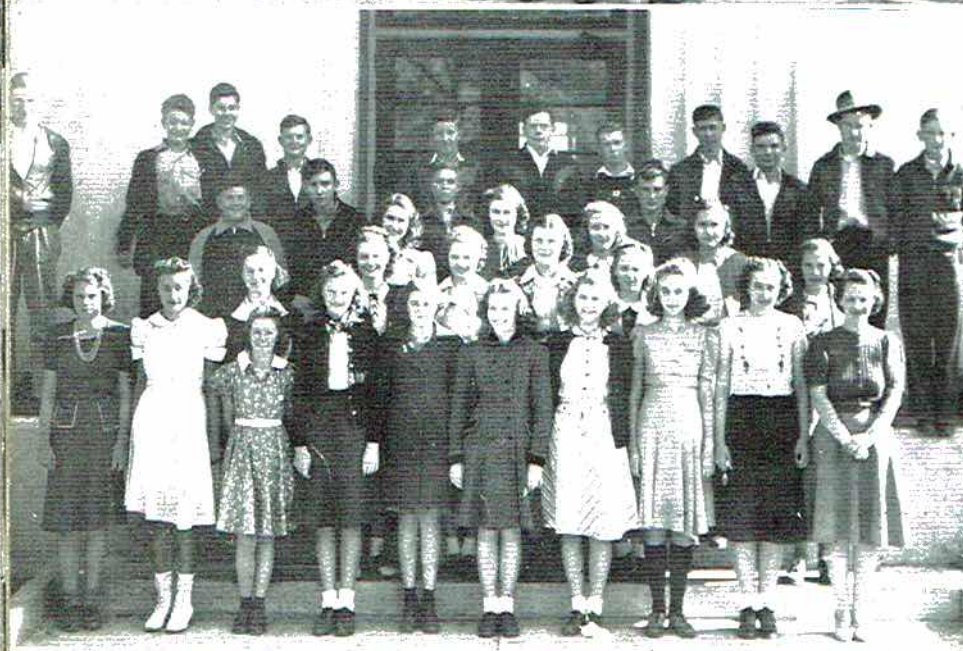


JUNIOR III

MRS. MCCRARY

President Evelyn Sanders
 Vice-President Jack Gay
 Secretary and Treasurer Donald Stewart

V. Anderson, M. Beaver, V. Bellomy, H. Berry, J. Brandon, E. Brazelton, J. Callahan, S. Campbell, H. Chaney, L. Chaney, A. Childress, O. Clark, K. Clemens, H. Combs, E. M. Evans, J. Gay, M. M. Grass, E. Hall, M. Harris, M. Hethcoat, P. W. Holder, W. Kennamer, I. Law, J. Minton, D. W. Roden, L. Rudder, E. Sanders, H. Shelton, E. Sherrill, V. Sherrill, L. V. Shiflet, J. Shook, D. Stewart, L. Stewart, V. Stubbs, B. Thomas, J. Thompson, K. Utter, L. Winger.



JUNIOR III

MRS. JONES

President Woodrow Judge
 Vice-President Cecil Cowart
 Secretary and Treasurer Clarence Jobe

A. Bellomy, B. Benson, E. Berry, L. Brandon, E. Bryant, P. Carter, E. Carver, C. Cowart, D. Evans, A. R. Gant, N. Gist, L. Hayes, K. Holder, G. H. Hollis, C. Jobe, W. Judge, J. Kirby, K. Lusk, M. Maynor, B. M. McClendon, V. Michaels, H. Oden, Ed Phillips, B. Prince, E. Rice, E. Roberts, R. Rudder, R. Selby, J. Simmons, J. Snodgrass, M. E. Starnes, G. Stewart, B. Talkington, H. Thurman, M. R. Tiffin, R. Webb, V. Wood.

Presi
 Vice-P
 Secre
 J.
 Belfo
 B. B
 Child
 W. F
 shaw
 Holla
 son
 L. W.
 M. S
 ner,
 Thom
 Wini

Presi
 Vice-P
 Secre
 C.
 D. B
 Dows
 D. E
 Gent
 B. J.
 McCl
 Mann
 Pittm
 G. L.
 Thom

Presi
 Vice-P
 Secre
 J. W.
 Edwar
 B. He
 G. L
 Major
 McAf
 Merre
 R. Mi
 M. Ro
 Smith
 J. B.
 inger,
 mack,

JUNIOR II

MR. FOLEY

President Neta Bishop
Vice-President Betty J. Thomas
Secretary and Treasurer Quinton Wood

J. R. Allen, R. Ambrester, D. Bell, A. Bellomy, S. Benton, N. Bishop, G. Boggs, B. Bradford, N. Bryant, J. Bulman, G. Childress, R. Collins, R. Devers, K. Duncan, W. F. Evans, M. Gattis, N. Hall, M. Henshaw, J. W. Michaels, L. J. Hodges, B. Holland, J. Inglis, M. Johnson, J. R. Johnson, R. McCamy, B. Parker, E. Potter, L. M. Potter, H. S. Presley, M. E. Proctor, M. Selby, V. Shelton, C. Shiflett, B. Sumner, K. M. Sumner, D. B. Talley, B. J. Thomas, A. M. Wallace, W. Wilhelm, O. Winger, B. Wood, Q. Wood.



JUNIOR II

MISS MANN

President Shirley Dell Powell
Vice-President Earl Thomas
Secretary and Treasurer Gaynell Dilbeck

C. Anderson, G. M. Beaty, B. Brandon, D. Brandon, A. Clemens, W. Cook, C. Dawson, G. N. Dilbeck, J. C. Dadson, D. Elliott, J. Foster, V. F. Gamble, P. Gentle, O. Gist, H. Helms, B. Hembree, B. J. Kelly, M. Leach, L. McCamy, M. E. McClendon, L. McCoy, N. Machen, V. Manning, M. Mayfield, N. Mayfield, A. Pittman, S. D. Powell, B. Rice, G. Ricker, G. L. Roach, A. R. Steeley, E. Thomas, L. Thomas, J. Ward.

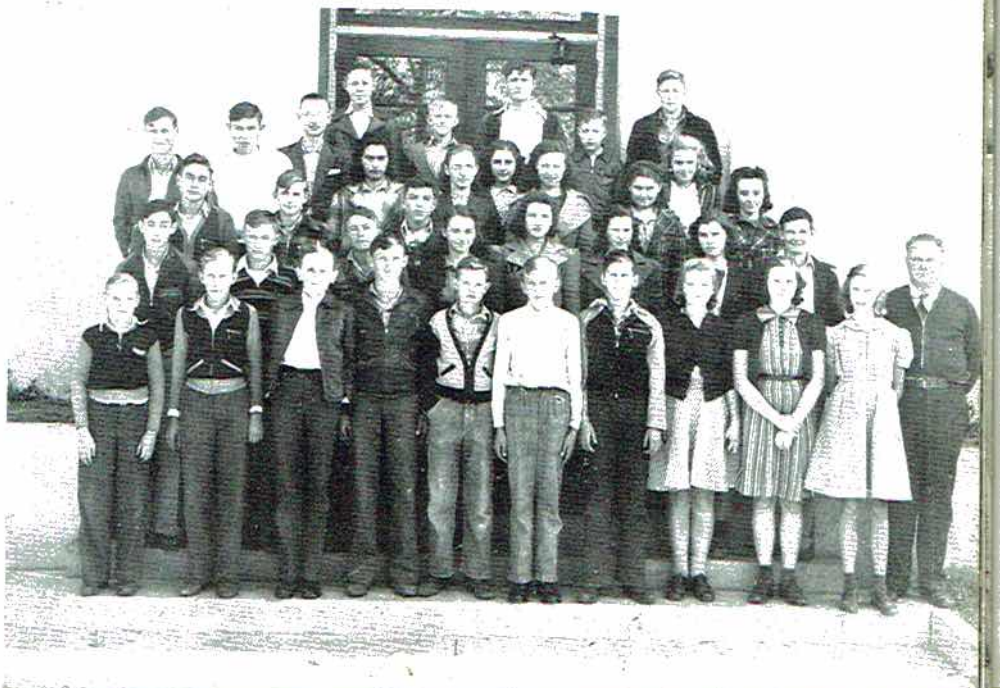


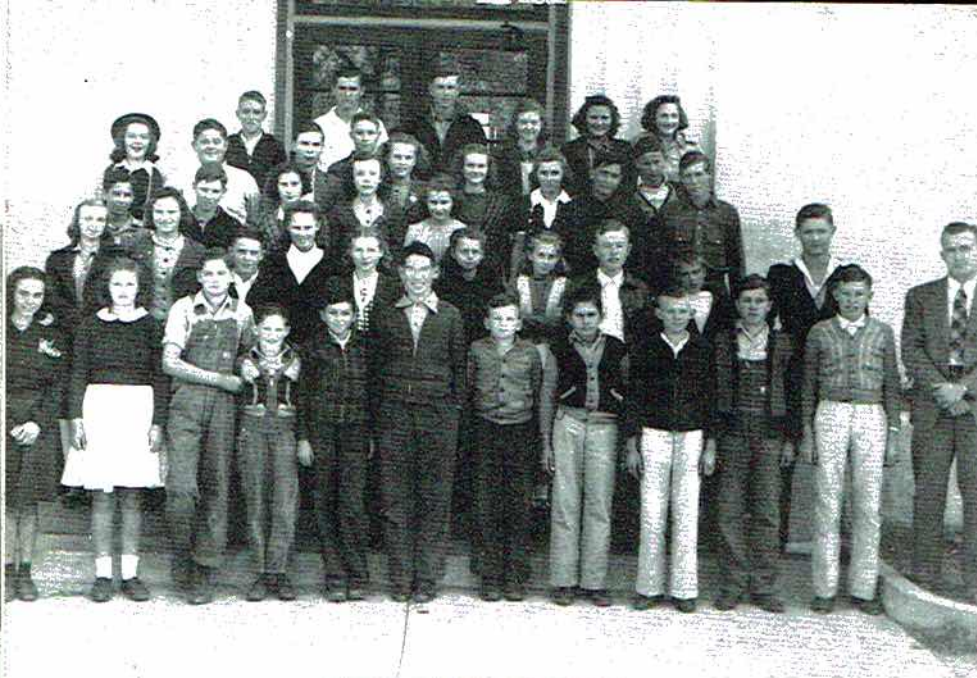
JUNIOR II

MR. PHILLIPS

President James Nichols
Vice-President Reuben Miller
Secretary and Treasurer Gladys Hamer

J. W. Berry, L. Cotton, H. Dickerson, E. Edwards, A. L. Evans, K. Hall, G. Hamer, B. Henshaw, C. Hess, B. Johns, R. Latham, G. Lochard, B. Lindsay, H. Little, E. L. Majors, H. Manning, P. Mathews, R. L. McAfee, J. McClendon, D. McCrary, J. Merrell, C. Michaels, J. Michaels, J. Miller, R. Miller, R. Owens, D. Parker, D. Parks, M. Rash, B. Shelton, M. N. Smart, R. A. Smith, R. Sumner, M. Tate, L. Thomas, J. B. Wallace, B. Wilhelms, C. H. Winger, D. Winger, E. Winger, M. Womack, R. Wright.



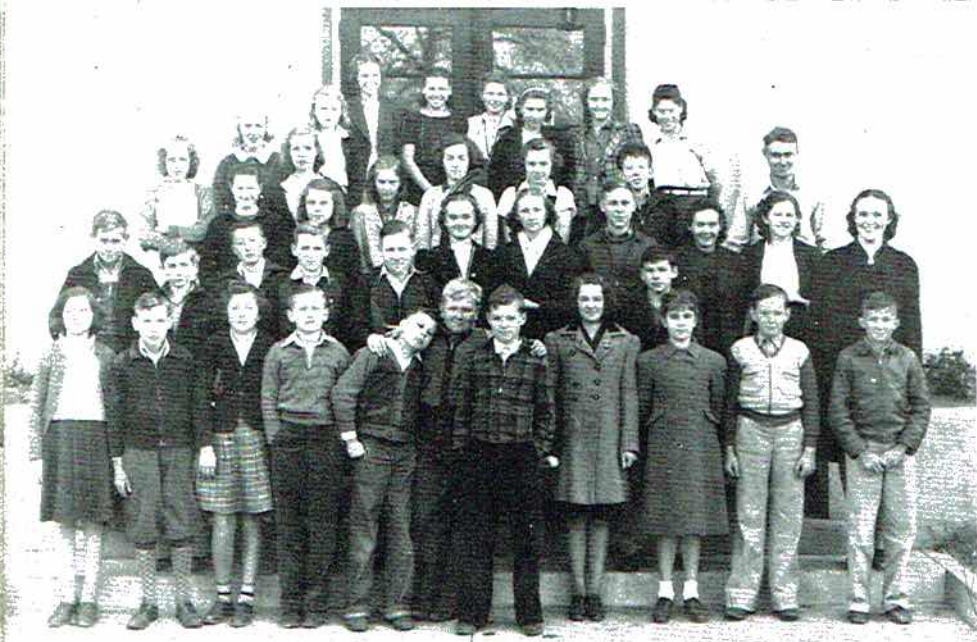


JUNIOR I

COCHRAN

President Ruth Woosley
 Vice-President Erskin Smartt
 Secretary and Treasurer Ben Gilbreath

M. J. Ashmore, E. Berry, J. A. Bradford, D. Bush, I. B. Chaney, H. Devers, H. Dickey, K. Edmonds, E. A. Eyster, E. Gamble, A. Gilbreath, L. Gilbreath, P. Guffey, B. J. Hale, T. Hargiss, H. Hughes, Jr., P. King, V. L. Lemons, L. M. London, R. Lovelady, E. Lusk, G. Manning, J. Matthews, R. McCamy, B. Metcalf, G. M. Miller, G. Morris, J. Owens, W. Phillips, V. Reed, W. Ritchie, J. Shifflett, E. Smartt, B. Smith, N. L. Smith, P. Smith, A. Snoddy, B. Thomas, E. L. Watson, H. Weaver, C. Winger, C. Wooden, H. Wooden, R. Woosley, C. Wright, T. Wynn.



JUNIOR I

MISS DICUS

President Lois Pendergrass
 Vice-President Billy Kelley
 Secretary Patty Patrick
 Treasurer Bettye Clyde Hollis

M. J. Anderson, E. Beard, A. M. Bell, D. Berry, M. Boggs, B. Bradford, C. Bradford, R. N. Brandon, F. Cetter, E. Crawford, M. S. Evett, D. Ferguson, P. J. Gamble, J. M. Garland, B. C. Hollis, A. House, M. T. Hurt, D. Johnson, B. Kelley, E. Lindsay, L. Lockard, E. McBay, T. McClendon, E. McClough, J. McGahee, S. Paradise, P. Patrick, L. Pendergrass, B. Petty, V. M. Potter, B. Precise, H. Priest, M. Proctor, R. Rice, W. D. Sharp, T. H. Shelton, E. Smith, L. M. Southard, T. Steeley, V. Talkington, M. Warren, L. Watson, A. Wilhourn, A. R. Womack, E. Wright.



JUNIOR I

MISS SEALE

President Marie Miller
 Vice-President Johnny Pace
 Secretary and Treasurer Vedic Chandler

D. M. Bell, R. L. Bell, I. Benson, W. C. Brandon, S. Bryant, V. Chandler, P. Combs, D. Conclison, R. Cotton, V. Davis, B. Downey, F. Edgeworth, M. Ferguson, M. Gilbreath, E. Grocs, B. Hall, L. Hamer, L. Hancock, J. L. Hanning, M. Jacobs, G. Johnson, V. Letson, M. Miller, J. Morris, C. McCarver, L. Olinger, J. Owens, J. Pace, R. Phillips, M. L. Pitts, E. Proctor, R. Proctor, T. B. Ray, J. Reed, C. Reynolds, R. L. Roach, A. Sherrill, M. Smart, W. Stewart, M. Smith, T. Smith, G. W. Thomas, L. Venable, B. Wallace, O. Winger, R. Wooden.



Clubs

1941 REMINDER



THE BAND AT WORK

BAND

MR. FOLEY, Director

President Sue Patrick
 Vice-President A. P. Price
 Secretary and Treasurer John Ed Michaels
 Reporter Harold Nye

CORNETS

Bill Bradford
 Richard Patrick
 June Thomas
 Mitchell Harris
 Ruth McCutchen
 Jack Simmons
 Bryan Henshaw
 Bill Carver
 Leon Smith
 Ben Kirby
 Gay Nell Dilbeck
 Maizie Johnson
 W. D. Sharp
 Opal Gist
 Neal Bryant
 Bobby Thomas

CLARINETS

Harold Nye
 Frank Keown
 Lila Jean Hodges
 Rozanne Cox
 Earl Tomas
 Reon Ambrester
 Shirley Dell Powell
 Mary Ellen Starnes
 Patty Patrick
 Billie Prince
 Evelyn Sanders
 Betty Clyde Hollis
 Betty Jane Thomas
 Phyllis Jean Gamble
 Jack Gayle
 Jane Benson

DRUMS

Sue Patrick
 Frieda Smith
 Eunice Beard
 H. S. Presley
 Harold Kennamer
 Dorothy Roden
 Mary Ellen Thomas
 Mabel Long
 Fred Sanders
 Betty Patterson
 Louise Bohannon
 Mary Evelyn McClendon
 Ernestine Carver
 Katherine Carter

AND AT PLAY

SAXOPHONES

Jean Snodgrass
 Bobby Griffith
 Bubs Bridges
 Juanita Flowers
 Opalea Sentell
 Billie Madge Ward
 John Hill

FLUTE

Mary Tex Hurt

TROMBONES

John Ed Michoels
 Ray Collins
 Robert Sumner
 W. H. Hill
 Donald Stewart
 Austin House
 Boyd Sumner
 Charles Giddens
 Rodney Gentle

BARITONES

Johnny Shook
 Jack Gay
 Tom Freeman

BASSES

A. P. Price
 Rayford Ashmore
 Billy Stewart
 Clarence Penny
 James Payne

ALTO HORN

Jim Kirby
 Bob Thomas
 Wiley Kennamer
 G. H. Hallis
 Richard McCamy
 Leon McCamy
 Jack Foster
 Robert Lovelady



1



2

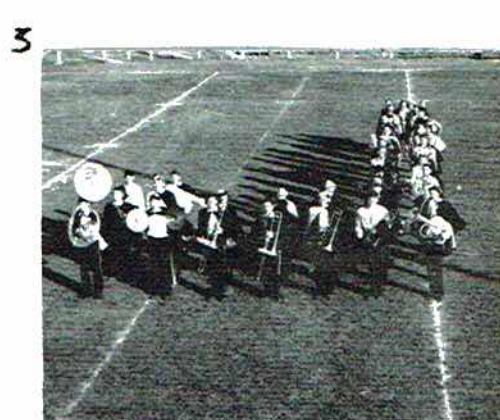
1. Drum Corps
2. High Steppers
3. The Big "J"
4. "The Deacon"
5. Day Dreaming?
6. Winter Uniforms
7. Where's Doc Hugh?
8. Yes, It's Opalea



5



4



3

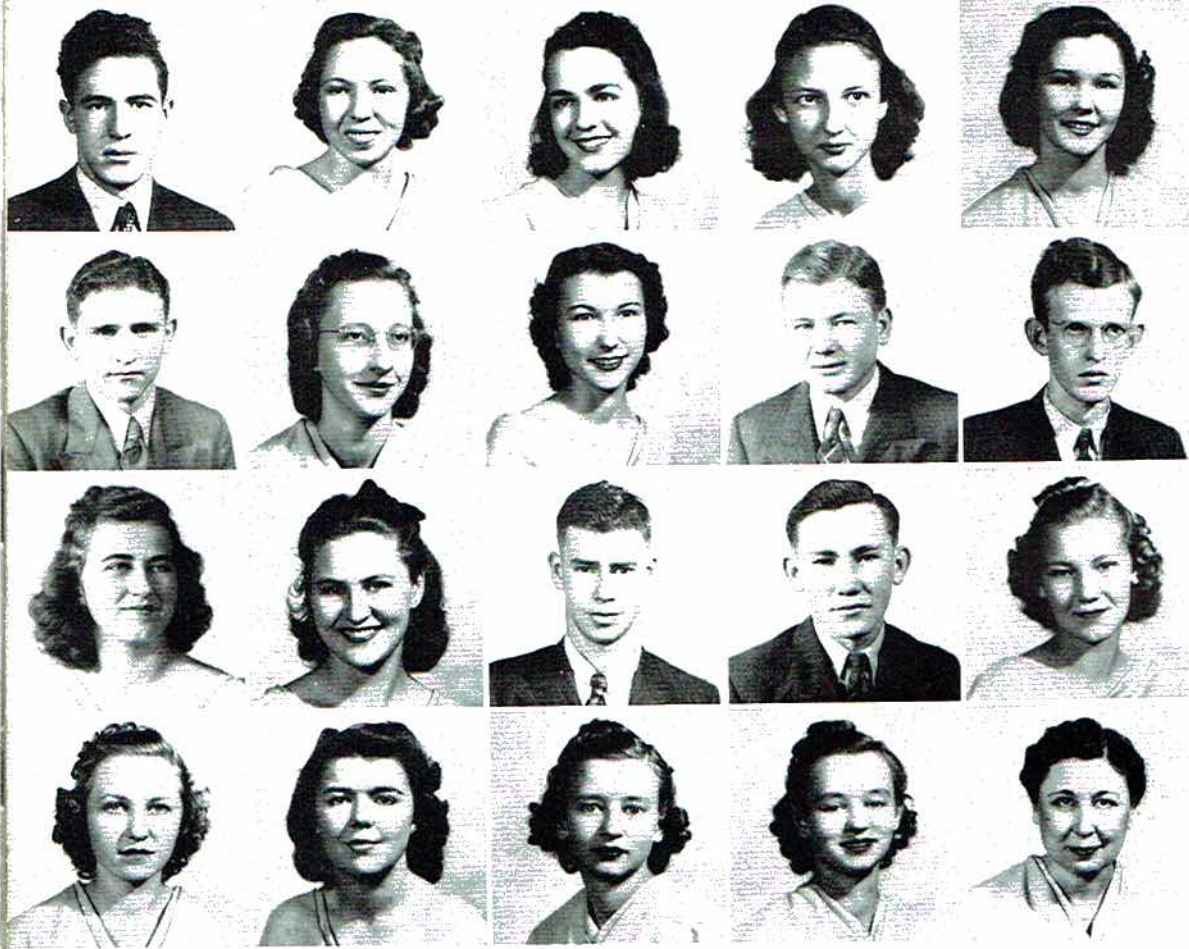


8



6





Top Row: Bryant, Campbell, Clopton, Cox, Davis . . . Second Row: Devers, Fennell, Foshee, McLeMore, Meek . . . Third Row: Patrick, Presley, Price, Stockton, Sumner . . . Bottom Row: Wallingsford, Wann, Wynne, Wynne, Daniel.

NATIONAL HONOR SOCIETY

MISS DANIEL, Sponsor

President	John Milton Stockton
Vice-President	Louise Fennell
Secretary	Jane Campbell
Treasurer	Clyde McCleMore
Reporter	Sue Patrick

Preston Bryant, Jane Campbell, Elizabeth Dell Clopton, Rozanne Cox, Margaret Ellen Davis, Horton Devers, Louise Fennell, Ruby Foshee, Floyd Fossett, Clyde McCleMore, Jerry Meek, Sue Patrick, Mary Evelyn Presley, A. P. Price, John Milton Stockton, Mary Nell Sumner, Lena Wallingsford, Faye Wann, Lillian Wynne, Lydia Wynne.



R E M I N D E R . 1 9 4 1



Top Row: Bullard, Boyd, N. Campbell, J. Campbell, Collins . . .
 Second Row: Carter, Davis, Fennell, Miller, F. Nichols . . . Third Row:
 M. Nichols, Ryan, Roach, Sumner, Thrasher . . . Bottom Row: Tigie,
 Thomas, Wallingsford, Wann, Dicus.

GIRL RESERVE

MISS DICUS, Sponsor

President	Faye Wann
Vice-President	Flora Nichols
Secretary	Shirley Boyd
Treasurer	Ruth Thomas

Anna Ruth Bullard, Shirley Boyd, Nora Lee Campbell, Jane Campbell, Mildred Collins, Mary Kate Carter, Robina Davis, Louise Fennell, Bebe Jones, Eleanor Miller, Flora Nichols, Martha Nichols, Marie Ryan, Josephine Roach, Mary Katherine Sumner, Thelma Thrasher, Ethelene Tigie, Ruth Thomas, Lena Wallingsford, Faye Wann.

JACKSON COUNTY HIGH SCHOOL





Top Row: Bulman, Cotton, Duncan, Fennell, Gilbreath . . . Second Row: G. Harris, J. Harris, Henshaw, Holder, Lockard . . . Bottom Row: McBride, Morris, Pendergrass, Staton, Bailey.

COMMERCIAL CLUB

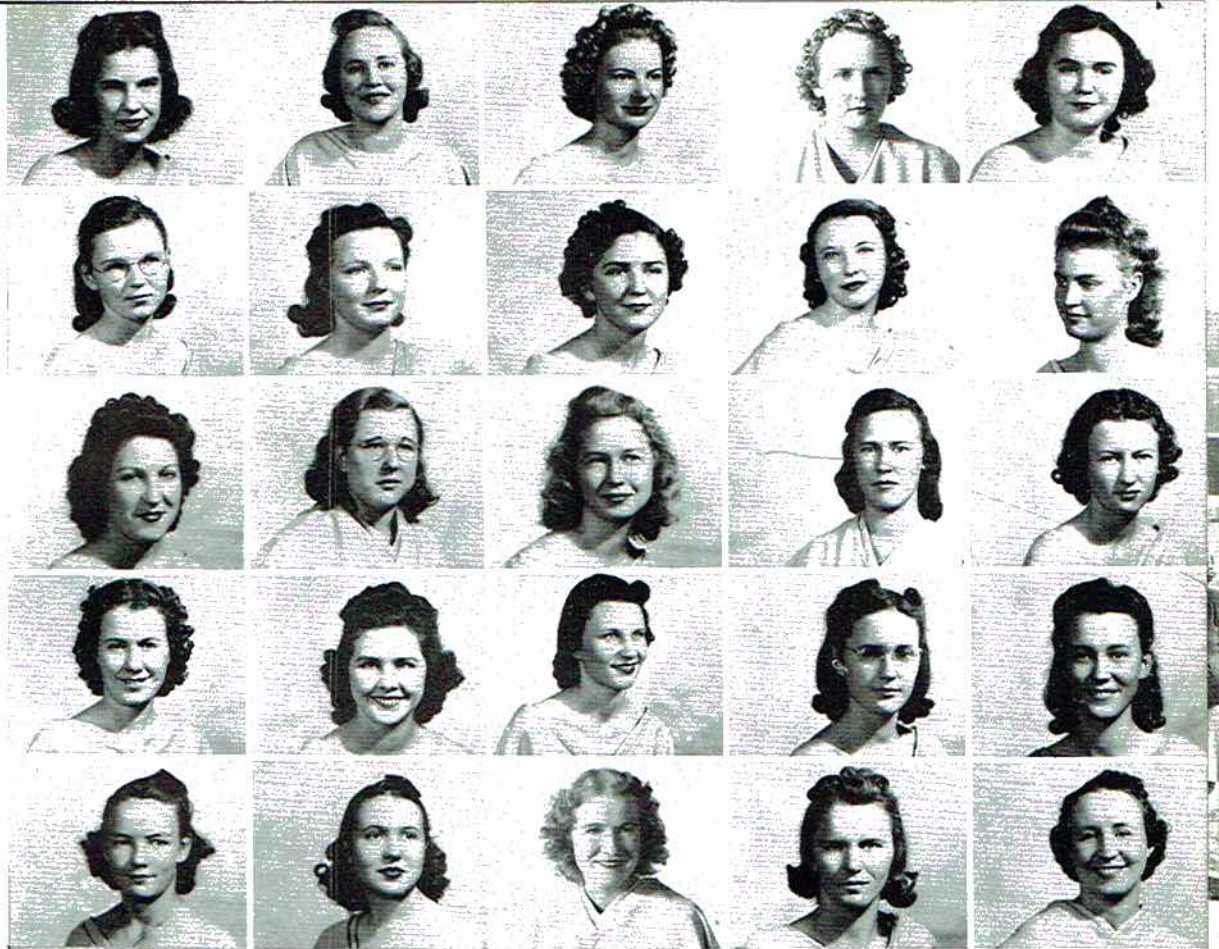
MRS. BAILEY, Sponsor

President	Lois Pendergrass
Vice-President	Mary Nell Sumner
Secretary	Isabelle Bulman
Reporter	Lilly Ann Fennell

Vera Chloe Beam, Kathalee Bulman, Isabelle Bulman, Kathryn Carter, Rose Cotton, Nellie Tom Duncan, Lilly Ann Fennell, Charles Giddens, Sallie Mae Gilbreath, Geneva Harris, Jack Harris, Bobbie Henshaw, Pauline Holder, Louise Lockard, Grace McBride, Bettye John Morris, Joy Page, Lois Pendergrass, Deniez Robertson, Helen Staton, Hilda Stewart, Mary Nell Sumner.

R E M I N D E R . 1 9 4 1





Top Row: Bryant, Carson, Crye, Dolberry, Flowers . . . Second Row: Hancock, Hilley, F. Johns, M. Johns, Machen . . . Third Row: McDonald, McKenzie, Money, Payne, Rice . . . Fourth Row: Sampson, Selby, Shelley, E. Staton, L. Staton . . . Bottom Row: Sumner, Taylor, Utter, Womack, Turner.

FUTURE HOMEMAKERS

MRS. TURNER, Sponsor

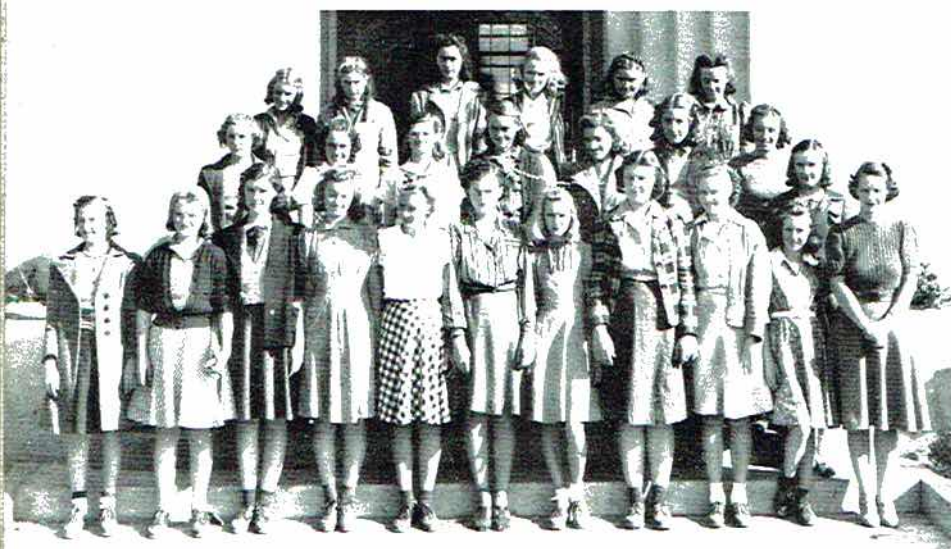
President	Forestine Bryant
Vice-President	Jessie Lee Matchen
Secretary	Ester Mae Carson
Reporter	Alda Florance Petty

Ruby Allen, Forestine Bryant, Grace Bynum, Ester Mae Carson, Shirley Carter, Annie Carter, Hazel Crye, Lorene Dolberry, Annie Mae Evans, Juanita Flowers, Cornelia Hancock, Nadine Hilley, Flora Dell Johns, Marie Johns, Virginia Lindsay, Marie London, Jessie Lee Matchen, Kathleen McDonald, Nye Ellie McKenzie, Maggie Miller, Linnie Mellican, Evelyn Money, Earline Morris, Ester Mae Myris, Grace Owens, Lucille Payne, Alda Florance Petty, Kathleen Rice, Bonnie Russell, Francis Sampson, Pauline Selby, Helen Shelley, Winnie Sisk, Edna Staton, Lois Staton, Ila Sumner, Alice Taylor, Rachel Taylor, Mary Ruth Tipton, Bernice Utter, Margaret Williamson, Susie Williamson, Nannie Lee Womack, Thelma Womack, Rosa Pearl Wright.



JACKSON COUNTY HIGH SCHOOL

SCIENTISTS, MUSICIANS,



CITIZENSHIP CLUB

MRS. JONES, Sponsor

President Effie Berry
 Vice-President Nita Mayfield
 Secretary and Treasurer Chloe Michaels
 Reporter Gladys Hamer

V. Anderson, D. Bell, S. Benton, R. Beard, E. Berry, M. Beaver, L. Cotten, K. Duncan, A. Evans, N. Gist, M. M. Gross, G. Hamer, I. Law, N. Matchen, C. Michaels, V. Shelton, M. N. Smart, K. M. Sumner, M. Tate, M. R. Tiffen, E. Winger, V. Wood, M. Womack, N. Mayfield, M. Mayfield.



F. F. A. CLUB

MR. PHILLIPS, Sponsor

President Trester Moore
 Vice-President Kenneth Brewster
 Secretary Fred Bynum
 Treasurer Floyd Fossett
 Sergeant-at-Arms Joe Barber
 Reporter Boyd Anderson
 District Vice-President James Payne

B. Anderson, R. Anderson, R. Ashmore, J. Barber, T. Bellomy, J. C. Bishop, J. Bradford, J. Brazelton, I. Brandon, K. Brewster, F. Bynum, J. Callahan, C. Carter, S. Campbell, R. Carter, J. S. Carter, H. Combs, R. Davis, W. Dulaney, J. W. Floyd, F. Fossett, H. Frazier, T. Freeman, A. G. Gilbreath, M. Heathcoat, C. Hurt, Q. Hilley, J. Law, W. Latham, L. McGuffey, F. Michaels, T. Moore, J. Payne, E. Rice, R. Rudder, A. Smith, J. Snodgrass, B. Stewart, J. Talkington, J. M. Thomas, J. Thompson, E. Tipton, R. Webb, B. Woodall, R. Word.



MUSIC CLASS

MRS. HEMBREE, Sponsor

M. Adams, R. Ambrester, L. Bohannon, E. D. Clopton, M. E. Davis, J. Flowers, L. J. Hodges, M. Johnson, D. McCrary, E. Money, J. Page, M. E. Presley, S. D. Powell, E. Sanders, F. Smith, M. E. Starnes, V. Stubbs, M. Tate, B. J. Thomas, M. E. Thomas, R. Thomas, M. R. Tiffin, B. M. Word.

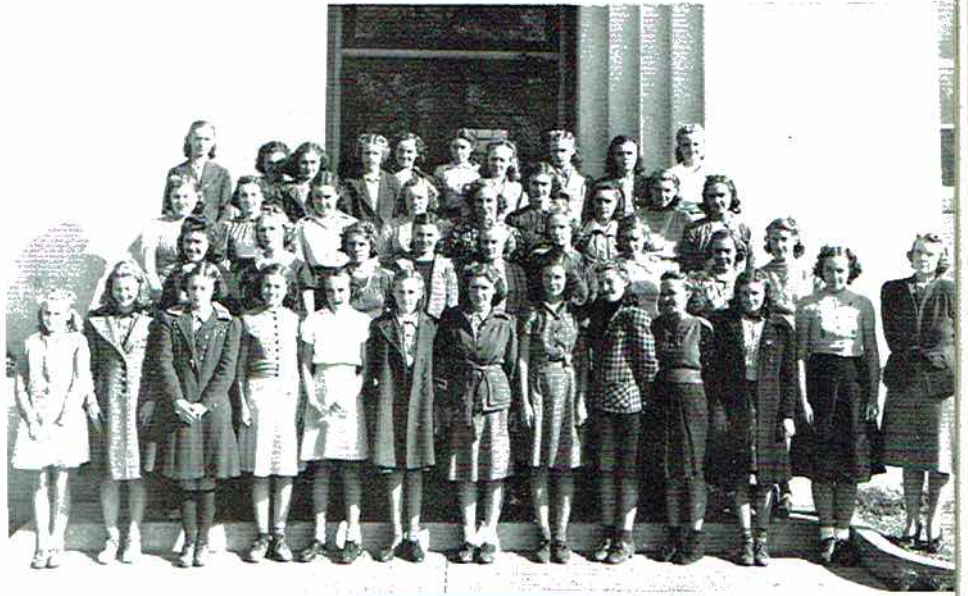
CITIZENS, READERS, AND . . .

GIRLS' CHORUS

MISS LOVEJOY, Sponsor

President Vivian Stubbs
 Vice-President Ethel Welch
 Secretary and Treasurer Louise Rudder

A. Bellomy, P. Bellomy, E. Berry, H. Berry, D. Brandon, L. Brandon, L. M. Brandon, V. Brandon, E. Bryant, A. Clemens, K. Clemens, B. Downey, A. R. Grant, B. Hall, E. Hall, K. Hall, L. Hayse, B. Johns, B. J. Kelley, R. Kirby, M. Leach, S. Linville, V. Lindsay, M. London, J. Morris, M. Maynor, L. McCoy, M. M. Miller, I. Morris, A. Pittman, M. E. Proctor, M. R. Proctor, L. Rudder, R. Shelby, E. Sherrill, R. Shifflett, M. Smith, A. R. Steely, V. Stubbs, L. Thomas, E. Welch.

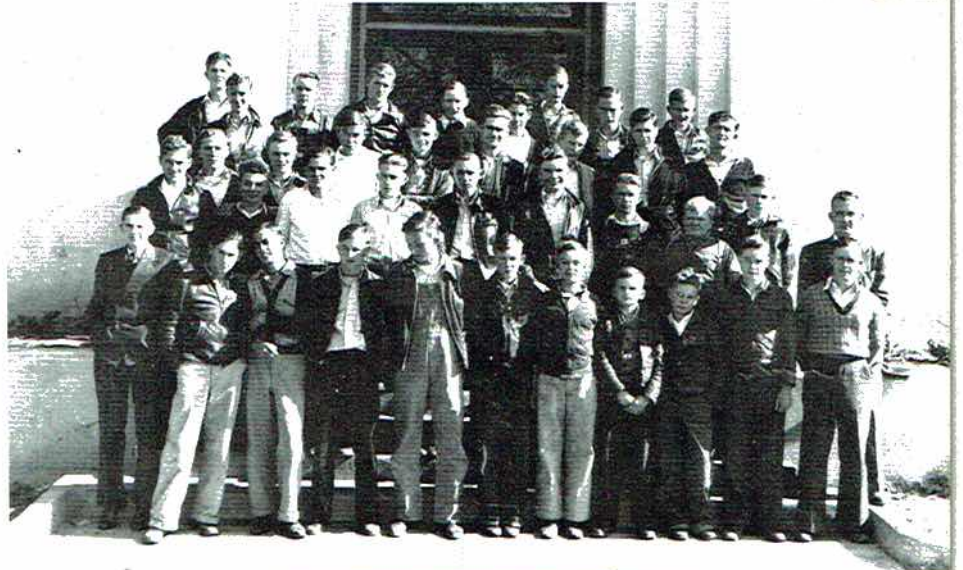


BOYS' PHYSICAL EDUCATION CLUB

MR. COCHRAN, Sponsor

President P. W. Holder
 Vice-President Dick Holder
 Secretary and Treasurer P. Cornelison

J. Brandon, M. Bryant, W. Blizzard, P. Carter, E. Caston, L. Chaney, P. Cornelison, C. Cowart, H. Chaney, H. Devers, P. Gentle, S. Green, T. Hargias, W. Haynes, B. Hembree, D. Holder, P. W. Holder, J. Jarnigan, L. Johns, W. Judge, P. King, Haskel Little, J. McClendon, T. McClendon, J. Michaels, J. W. Michaels, S. Paradise, B. Patterson, E. Phillips, M. Proctor, R. Rousseau, D. Stewart, G. Stewart, B. Thomas, H. Thurman, J. Wallace, H. Weaver.



GIRLS' PHYSICAL EDUCATION CLUB

MRS. THOMAS, Sponsor

President Laura Brazelton
 Vice-President Berith Bradford
 Secretary and Treasurer Annie L. Barber
 Reporter Exie Fay Hicks

M. G. Anderson, M. Ashmore, L. Brazelton, E. Brazelton, D. Berry, R. L. Bell, A. L. Barbèr, E. Bryant, R. L. Brandon, B. Bradford, A. Bell, M. A. Brown, N. Bishop, D. Bush, E. Beard, J. Bulman, E. Crawford, I. B. Chaney, O. Clark, E. M. Evans, W. F. Evans, M. Gilbreath, L. K. Henegar, L. Honey, E. F. Hicks, L. Hancock, B. Hale, J. V. Johnson, V. Lemons, M. Miller, E. M. Bay, H. Owens, L. Pendergrass, D. Parker, K. Pace, L. M. Phillips, M. Smart, A. Snoddy, L. Thomas, C. Wright, A. Wilburn, O. Womack, B. Wood.



BULLSHOOTERS

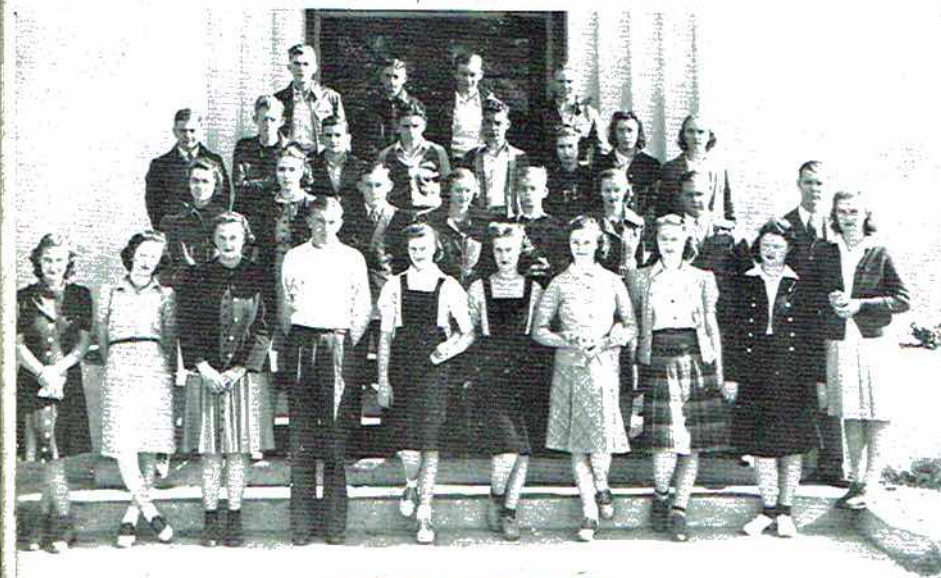


READING CLUB

MISS MANN, Sponsor

President Mary Evelyn McClendon
 Vice-President Doris Elliott
 Secretary Bob Hembree

C. Anderson, G. Baty, C. Dawson, J. C. Dodson, E. Edwards, D. Elliott, D. Evans, V. Gamble, B. Hembree, C. Hess, E. L. Majors, L. McCamy, D. McCrary, J. Merrill, M. E. McClendon, V. Michaels, R. Miller, G. Morris, D. Parks, B. Rice, G. Ricker, B. Shelton, J. Shiflett, R. A. Smith, A. Taylor, B. Wilhelm, W. Wilhelm.

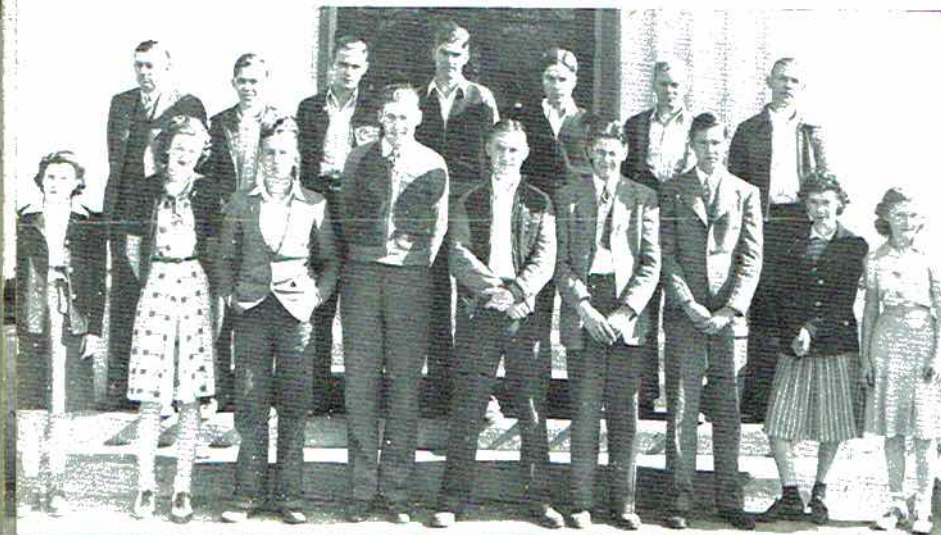


SENIOR DISCUSSION CLUB

MR. THOMAS, Sponsor

President Mary Evelyn Presley
 Vice-President John M. Stockton
 Secretary Velma Carter

F. Bryant, D. Blevins, V. Carter, E. D. Clopton, M. E. Davis, H. Devers, R. Gentle, D. Gist, E. Hall, Imogene McCrary, R. McCutchen, C. McLeMore, J. Meek, E. Parks, C. Perry, M. E. Presley, A. L. Russell, L. Smith, Jr., J. M. Stockton, W. L. Smith, M. Thomas, B. Woosley, M. Wininger, A. White, Lillian Wynne, Lydia Wynne.



SENIOR SCIENCE CLUB

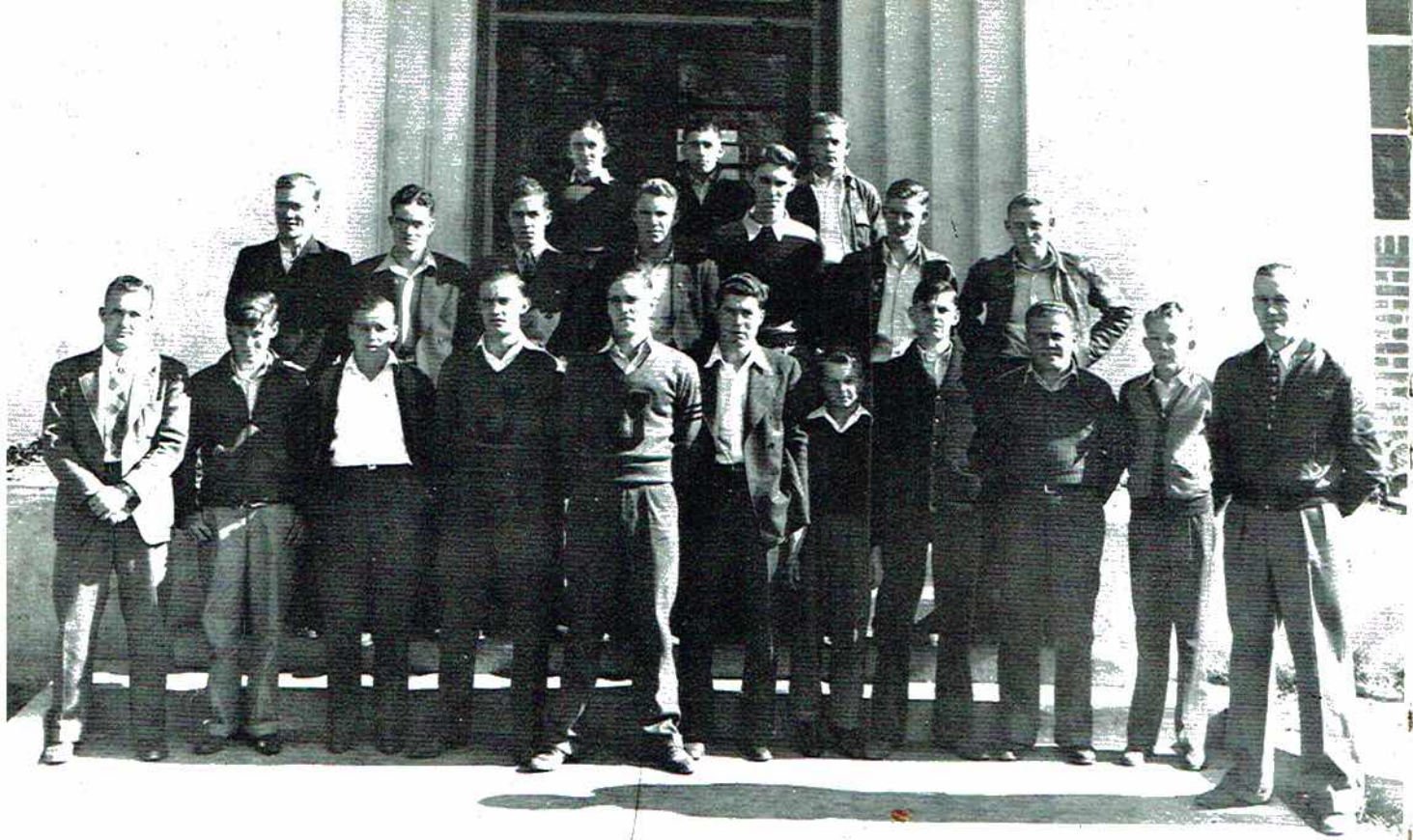
President Aaron Fossett
 Vice-President James Bentley
 Secretary and Treasurer Gene Airheart

G. Airheart, J. Bentley, J. Breland, C. Clark, W. Conally, A. Elliott, A. Fossett, E. Garner, T. Harper, D. Johnson, L. Kirby, A. L. Petty, L. N. Smith, M. Smith, A. Ward.

Sports

1941 REMINDER





"J" CLUB ALL DRESSED

MR. WEDGWORTH, Sponsor

President	A. B. Brandon
Vice-President	Gus Sentell
Secretary and Treasurer	Granville Martin

Binford Bell
 Jones Bishop
 A. B. Brandon
 Preston Bryant
 Sanders Bryant
 Bill Cornelison
 J. W. Floyd
 Frank Henshaw
 Willis Henshaw
 Dan Kelly
 Leonard Latham

Granville Martin
 James Payne
 Dub Phillips
 Robert Robertson
 Lebron Rooks
 Gus Sentell
 W. L. Smith
 Bobby Smith
 Ed Swaim
 Billy Webb
 Wilburn Williams

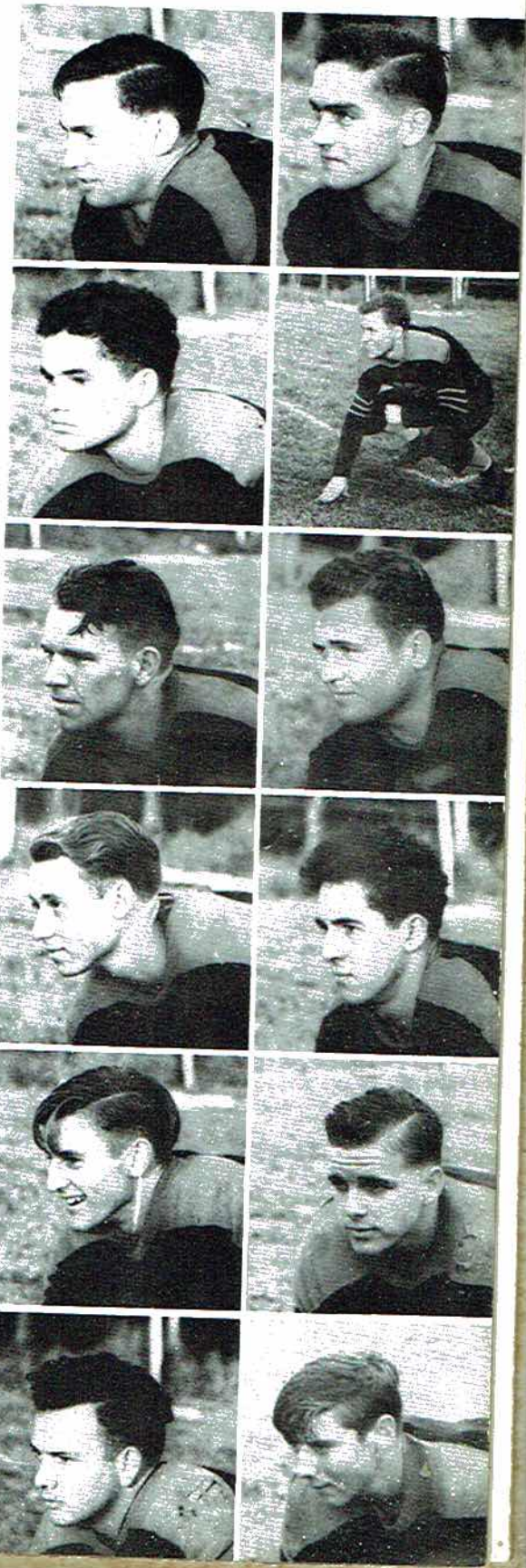


"and, of course it got away"

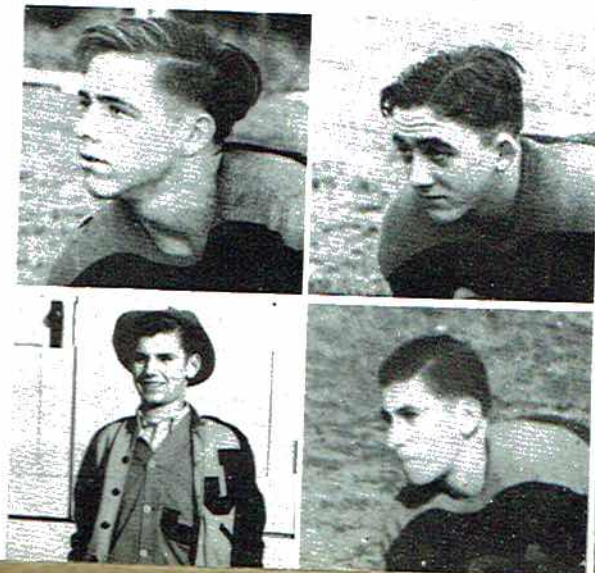
UP, AND LOOK

Captain Gus Sentell, Guard	Weight 165
Alternate Captain A. B. Brandon, Center	Weight 157
Jones Bishop, Back	Weight 175
Dan Kelley, Guard	Weight 160
Granville Martin, Back	Weight 175
Wilburn Williams, Tackle	Weight 210
W. L. Smith, Tackle	Weight 178
Ed Swaim, Guard	Weight 175
Dub Phillips, Back	Weight 180
Leonard Latham, Back	Weight 173
Preston Bryant, End	Weight 180
Benford Bell, End	Weight 157
Bobby Smith, Back	Weight 150
Frank Henshaw, Tackle	Weight 165
Bill Cornelison, Center	Weight 145
Willis Henshaw, Back	Weight 147
Robert Robertson, Back	Weight 140
Sanders Bryant, Back	Weight 160

Billy Webb, Manager

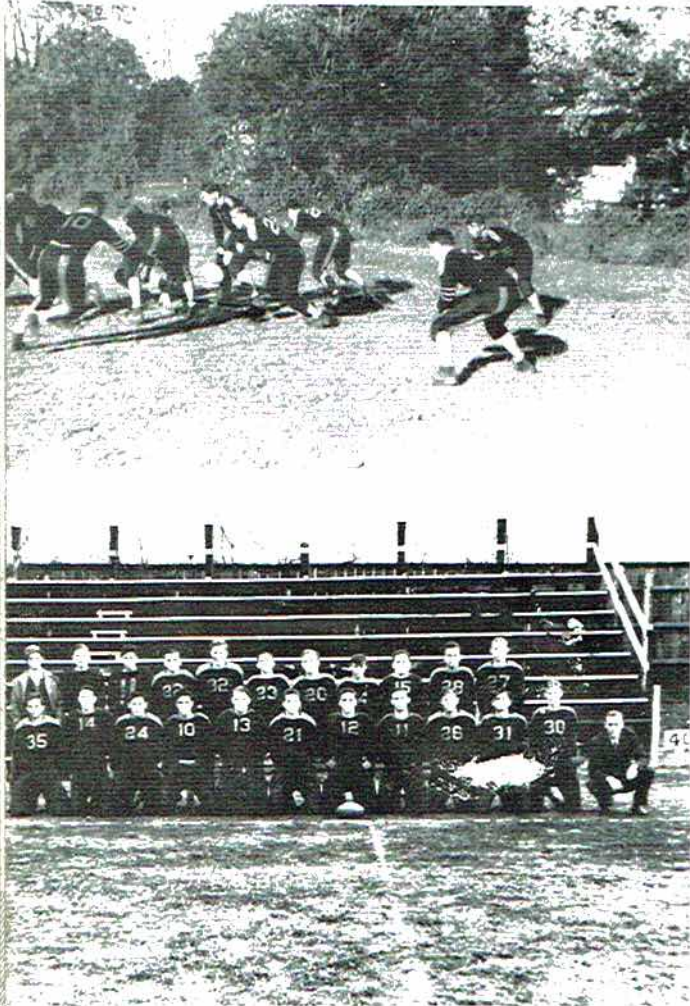


Sentell, Brandon, Kelley
 Martin, Williams, Phil-
 lips, Latham, P. Bryant,
 Bell, B. Smith, F. Hen-
 shaw, Cornelison, W.
 Henshaw, S. Bryant, Rob-
 ertson, Webb.



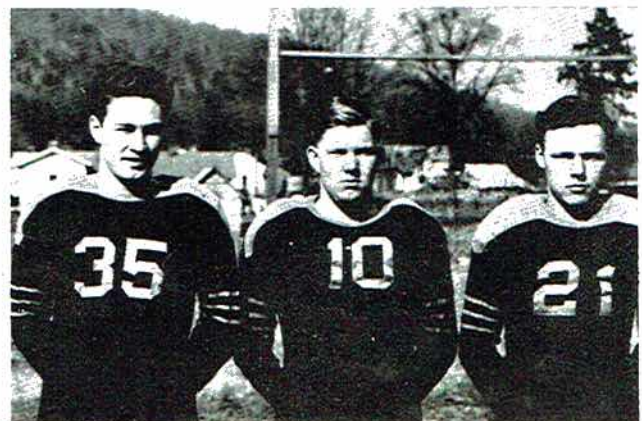
WHERE WE WENT!

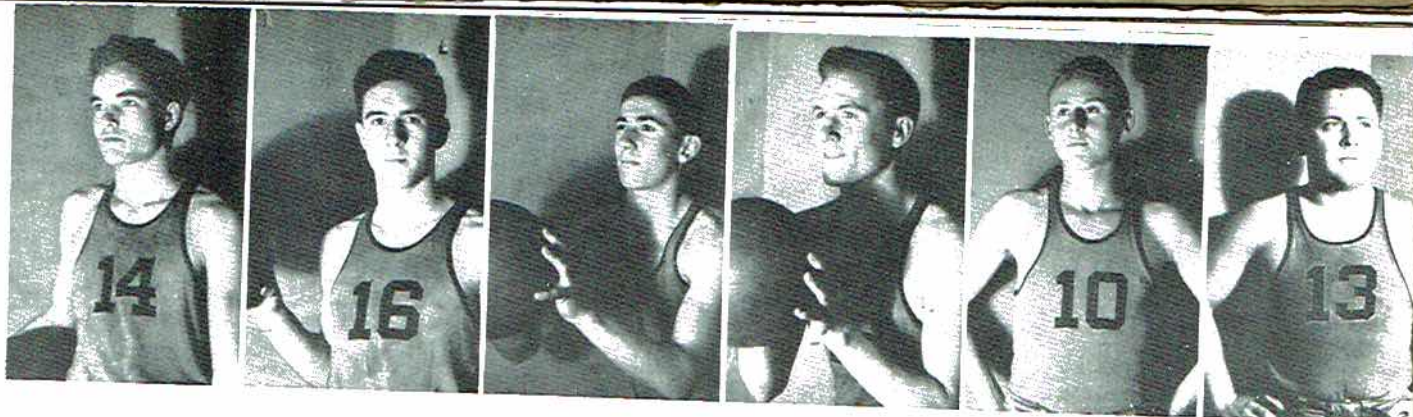
The Season



	SEPTEMBER 27	
Rison	6	J.C.H.S. 0
	OCTOBER 4	
Gurley	13	J.C.H.S. 6
	OCTOBER 11	
Guntersville	12	J.C.H.S. 7
	OCTOBER 18	
Joe Bradley	7	J.C.H.S. 28
	OCTOBER 25	
Fort Payne	26	J.C.H.S. 0
	NOVEMBER 1	
Godsden	53	J.C.H.S. 0
	NOVEMBER 8	
Lincoln	0	J.C.H.S. 32
	NOVEMBER 15	
Bridgeport	6	J.C.H.S. 6
	NOVEMBER 22	
Glencoe	19	J.C.H.S. 6
	<hr/> 142	<hr/> 85

Smith, Swaim, Bishop





SLIVERS AND SPLINTERS

J.C.H.S. 19
 J.C.H.S. 16
 J.C.H.S. 15
 J.C.H.S. 15
 J.C.H.S. 13
 J.C.H.S. 19
 J.C.H.S. 19
 J.C.H.S. 44
 J.C.H.S. 22
 J.C.H.S. 30
 J.C.H.S. 13
 J.C.H.S. 19
 J.C.H.S. 22
 J.C.H.S. 34
 J.C.H.S. 22
 J.C.H.S. 24
 J.C.H.S. 29
 J.C.H.S. 27
 J.C.H.S. 21
 J.C.H.S. 27
 J.C.H.S. 33
 J.C.H.S. 27
 J.C.H.S. 25
 J.C.H.S. 39
 J.C.H.S. 17
 J.C.H.S. 24
 J.C.H.S. 20
 J.C.H.S. 19
 J.C.H.S. 12

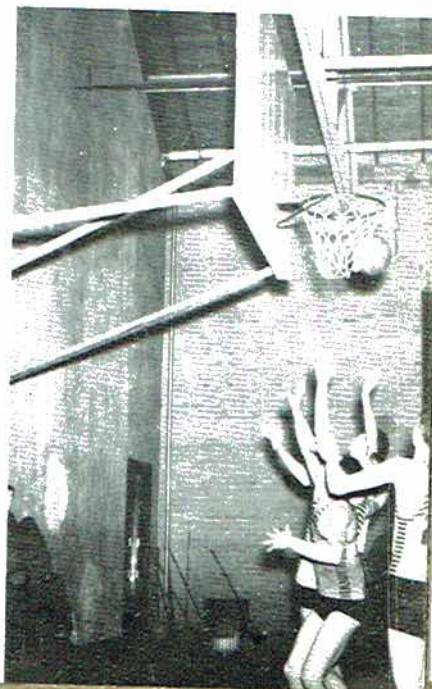
Dub Phillips, Guard;
 Lebron Rooks, Center;
 Dan Kelley, Guard;
 Preston Bryant, Forward;
 Granville Martin, Forward;
 Leonard Latham, Forward;
 Benford Bell, Center;
 Robert Robertson, Guard;
 Wilburn Williams, Manager.

Douglas 17
 Guntersville 14
 Geraldine 9
 Eva 13
 Alumni 12
 Gurley 22
 Gurley 18
 Geraldine 24
 Pisgah 30
 D. A. R. 21
 Crossville 24
 New Hope 18
 Sewanee Freshmen 35
 Crossville 22
 Arab 28
 Huntsville 22
 D. A. R. 18
 Guntersville 14
 Town Creek 18
 Mortimer Jordan 26
 Guntersville 16
 Pisgah 13
 Albertville 35
 Douglas 22
 Albertville 28
 New Hope 13
 Huntsville 16
 Arab 32
 Guntersville 17

TOURNAMENT SCORES

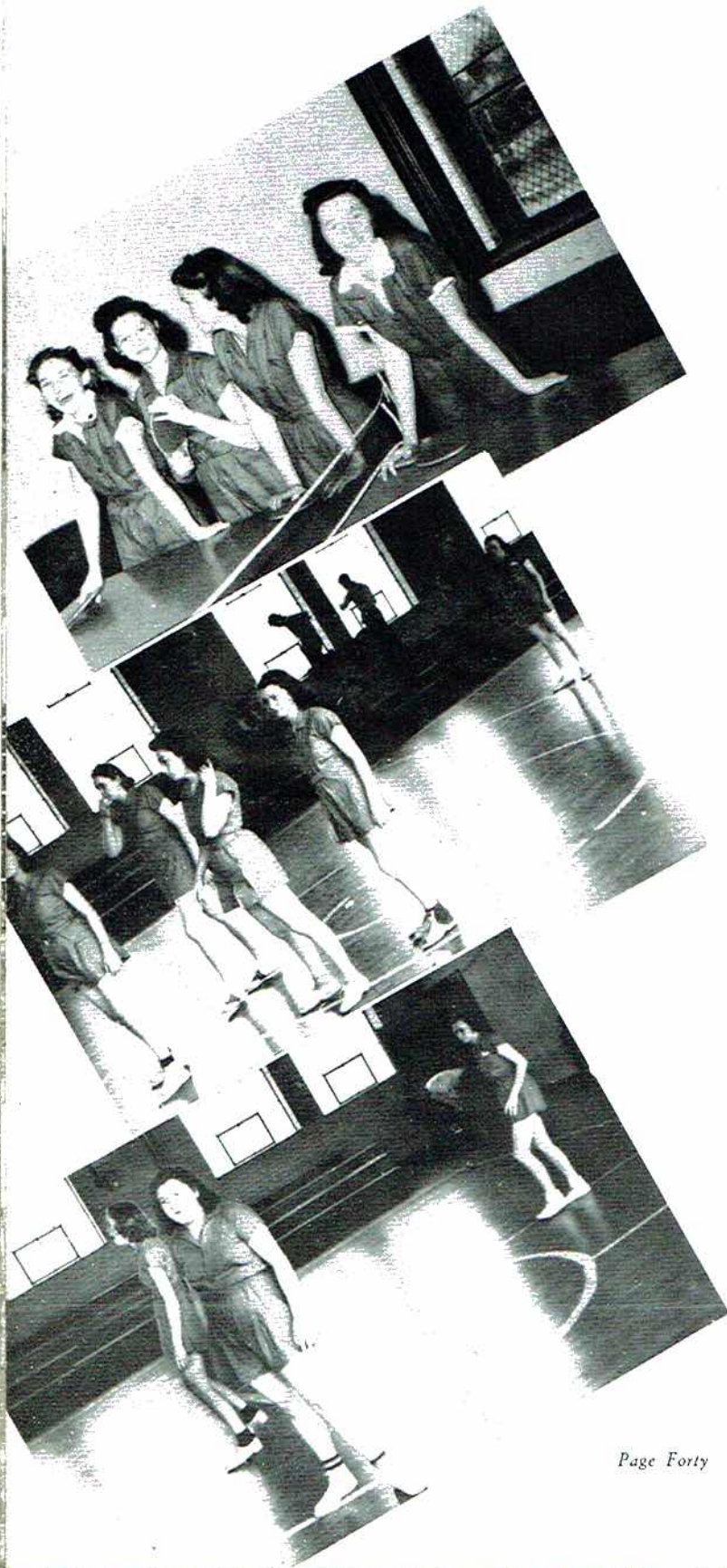
J.C.H.S. 40
 J.C.H.S. 30
 J.C.H.S. 20

Blountsville 23
 Arab 22
 Crossville 25





MRS. JANE HODGES THOMAS
Director of Girls' Physical Education



SHORTS

Betty, Laura Mae, Snooks, and Kathryn . . . Where's the ball? . . . Lena Mae . . . In the circle . . . Doodle and Faye . . . Watch for that ten-pin . . . Center pitch . . . Ping-pongers.



ARE QUITE THE THING

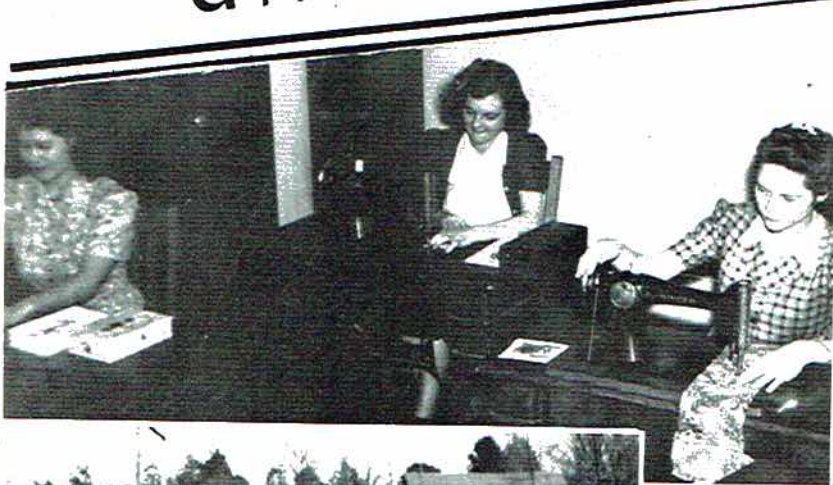
Girls' Physical Education

Under capable direction of Mrs. James Hodges Thomas, girls' physical education at Jackson County High School has grown both in scope of activity and in its reputation. This year has seen the physical education department of our school become an observation school for the other schools of our district. This honor was conferred by the State Department of Education.

Modern and amusing games with ample equipment for the large classes have been obtained. Bowling, Badminton, Basketball, Shuffleboard, and Quoits are always popular among our many students.



UNTIL FORTY-TWO . . .





Let's Help OUR ADVERTISERS
BRING HOME THE BACON

1941 REMINDER

CALDWELL'S CITY MEAT MARKET

FEEDS

SEEDS

"25 Years of Satisfactory Service"

STAPLE and FANCY

NATIVE and WESTERN

GROCERIES

MEATS

PHONE NO. 4

PATRICK LUMBER COMPANY

FLOORING

CEILING

SIDING

ROOFING

LIME

PAINTS

VARNISHES

CEMENTS

Phone 861



Compliments of

SCOTTSBORO HARDWARE COMPANY

Scottsboro, Alabama

SHERWIN-WILLIAMS PAINTS — JOHN DEERE and AVERY
IMPLEMENTS — ENTERPRISE STOVES, RANGES and
HEATERS

GENERAL LINE OF BUILDERS' and SHELF HARDWARE

"We Appreciate Your Business"

PHONE 39



WHERE THE GANG MEETS

AFTER SCHOOL

Phones 35 and 85

HODGE'S DRUG STORE

DRUGS N'EVERYTHING

Fastest Delivery in Town



24-HOUR, ONE-STOP SERVICE

STANDARD SERVICE STATION

Five Points

J. B. Presley, Prop.



Compliments of
M. F. HICKS TYPEWRITER COMPANY

"The House Behind the Product"

EXCLUSIVE AGENCY FOR ROYAL TYPEWRITER

A. L. Bridgman, Representative

Chattanooga, Tenn.

"Jackson High Uses The ROYAL"

Compliments of
BOCANITA THEATRE

"Always a Good Show"

V. M. Proctor Grocery

STAPLE and FANCY GROCERIES

"We Lead in Quality and Price"

PHONE 193



AMBULANCE SERVICE

By

TRAINED PERSONNEL

PACKARD EQUIPMENT

**Scottsboro
Funeral Home**

Phone 651



Compliments of
Butler & Kennamer
WHOLESALE GROCERS

YOU'VE TRIED THE REST
NOW TRY THE BEST
CITY CAFE

COMPLIMENTS OF

J. C. JACOBS BANKING COMPANY, Inc.

Scottsboro, Alabama

MEMBER FEDERAL DEPOSIT INSURANCE CORPORATION

HOLLIS & SON

formerly WORD BROS.

MEN'S FURNISHINGS — LADIES' READY-TO-WEAR and
GENERAL MERCHANDISE

"110 in Shade"

RED HOT STORE

"SWELL SUITS FOR MEN
WHO CARE"

Compliments of

W. J. WALES

JEWELRY

Compliments of

LAY & COMPANY

5 and 10c STORE

NOVELTY GOODS OF ALL
KINDS

Compliments of

Proctor & Snodgrass

Compliments of

J. S. BENSON

JUDGE OF PROBATE
JACKSON COUNTY

MRS. CLAUDE PAYNE'S
Flower and Gift Shop

Phone 245

FLOWERS FOR ALL
OCCASIONS
POTTERY AND GIFTS

We also Specialize in Supplies
For Parties

Compliments of

E. P. INGRUM

Compliments of

HARRIS KEEBLE

SHOE SHOP

EXPERT SHOE REPAIRING

Compliments of

W. Bentley Thomas

TAX ASSESSOR
JAKSON COUNTY

Compliments of
**THE STATE
NATIONAL BANK**

Compliments of
**WARD
LUMBER COMPANY**

It Won't Be Long Now—Get Ready For
BASEBALL — SOFTBALL — TENNIS — GOLF — FISHING
and SWIMMING

—Write for Catalog—

“IT PAYS TO PLAY”

MARTIN-THOMASON COMPANY

Chattanooga, Tennessee

Compliments of
P. W. CAMPBELL

Publisher

THE SENTINEL
Every Tuesday

PROGRESSIVE AGE
Every Thursday

Compliments of
**W. L. MILLER
GROCERY**



COMPLIMENTS OF
**SCOTTSBORO
WHOLESALE COMPANY**

Your Local Jobber

PHONE 133

Compliments of

LUQUIRE

H. S. BREWSTER
PAUL HOLLAND
BILLY JACK WINN
WILSON BULMAN
OLEN SPEARS

Scottsboro

RAYMOND COFFEY, Stevenson
J. B. BECK Bridgeport

Compliments of

E. D. WOOD

Compliments of

W. A. MAY & GREEN

"Thirty-six Years of Continuous Service"

FOOTBALL, BASKETBALL, BASEBALL, GOLF, TENNIS, AND
OTHER ATHLETIC SUPPLIES

Montgomery, Alabama



We express our sincere appreciation to the advertisers in our book, without whose support our undertaking would have been impossible.

THE BUSINESS STAFF

C. D. Presley, Business Manager



Compliments of

FIRST NATIONAL BANK

Scottsboro, Alabama

THRIFT SHOULD BE ONE OF THE FIRST LESSONS LEARNED

Deposit With

A STRONG BANK THOUGHTFULLY MANAGED

**PALACE
DRY CLEANERS**

WHERE QUALITY WORK
IS DONE

Compliments of

BLUE MOON CAFE

R. O. Chafin, Prop.

IN EVERY TOWN
ONE STORE STANDS OUT

IN SCOTTSBORO
IT'S

THE QUALITY STORE

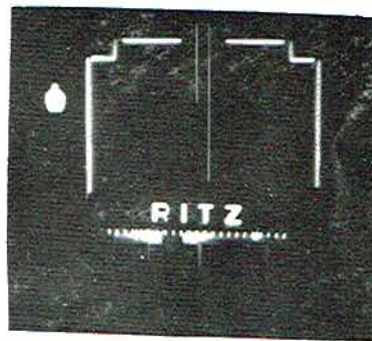
RED HOT STORE, Jr.

110½ in the Shade

"It Pleases Us To Please You"

Waco Derrick, Manager

COMPLIMENTS OF
THE
RITZ THEATRE



Compliments of
**CINDERELLA
BEAUTY SHOP**

Compliments of
CHILDREN'S SHOPPE

LADIES' and CHILDREN'S
READY-TO-WEAR

Scottsboro, Alabama

PAYNE DRUG STORE

FOUNTAIN SERVICE — GIFTS
COSMETICS

Prescriptions Filled Expertly
PHONE 40

Compliments of

**GREEN BUSH
BARBER SHOP**



LOVELINESS IS
MADE LOVELIER
AT THE



**VOGUE
BEAUTY SHOP**

Compliments of



**DOUBLE
COLA**

Compliments of

**SCOTTSBORO
ICE & COAL CO.**

PHONE 168
Scottsboro, Alabama

**WESTERN AUTO
ASSOCIATE STORE**

TIRES—RADIOS—AUTO PARTS
"Everything for the Automobile"

HOME OWNED
J. M. Devers, Manager



COMPLIMENTS OF
THE MAPLE'S COMPANY

L. G. BALFOUR COMPANY

Attleboro, Mass.

Foremost in the Manufacture of

CLASS RINGS AND PINS

COMMENCEMENT INVITATIONS

DIPLOMAS—PERSONAL CARDS

CUPS—MEDALS—TROPHIES

Jeweler to the Senior Class of Jackson County High

Representative—E. G. Fitzgerald

108½ No. 22nd Street

Birmingham, Alabama