

n-  
ating

1940

ounty  
y

# THE REMINDER

MA

02  
n  
0



# *Alma Mater*

Jackson County High School listen to us,  
To our vows of love,  
To ourselves and to each other,  
Faithful friends we'll prove.



## *The* **REMINDER**

1 ☆ 9 ☆ 4 ☆ 0

JACKSON COUNTY HIGH





C. P. NELSON, Principal

# DEDICATION

In appreciation of his successful administration since 1936, which has seen the completion and occupation of our new building, the organization of the Band and Glee Clubs, the inauguration of the annual May Day festival, and the construction of our new football field, we affectionately dedicate this the 1940 Reminder to Mr. C. P. Nelson, principal.



# Faculty

C. P. NELSON, Principal  
Business Law and Business Arithmetic

MRS. MABEL BAILY  
Secretarial Studies

A. H. BORDEN  
Science

MISS ANNA RUTH DICUS  
Junior Mathematics

J. B. FOLEY  
Band, Social Studies

MRS. HUBERT HAYES  
French, English

MRS. LYLES HEMBREE  
Music

WILLIAM HUDDLESTON  
English, Dramatics

MRS. RUDOLPH JONES  
Occupations

MISS ANTIONETTE LOVEJOY  
Mathematics

MRS. DELLA McCRARY  
English, Librarian

MISS ERNESTINE MANN  
English

GUY O'BRIEN  
Social Studies, Coach

H. E. PHILLIPS  
Vocational Agriculture

COBURN THOMAS  
History, Economics

MRS. JANE HODGES THOMAS  
Physical Education

MRS. BOYD TURNER  
Vocational Home Economics

RAY WEDGEWORTH  
Occupations, Coach







JANE STARKEY - CLAUDE JONES  
"Most Popular"



JOHN CLOPTON  
"Most Apt to Succeed"



HOWARD GREEN-"Wittiest"  
PICK HANSARD-"Best Athlete"



STANLEY JONES-"Best all'round"  
ELIZABETH JOHNSON-"Cutest"  
and "Best all'round"

# Who's



WARREN BELLAMY- EDITH GREY  
"Best Citizens"



CHARLES HAGGARD-"Handsome"  
OPAL DEAN-"Most Beautiful"

# Who



EDNA LOVELADY-"Shown Most Progress"  
OPAL COFFEY-"Wittiest"



JOHN ED JOHNSON - JULIA MAUDE THOMAS  
"Most Studios"



CHARLES COOK-"Shown Most Progress"  
MARY LOU HUGHES-"Most Ambitious"  
BURTON THOMAS-"Most Ambitious"



Faithful, loyal, firm, and true,  
Heart bound to heart will beat,  
Year by year the ages through,  
Until in heaven we'll meet.

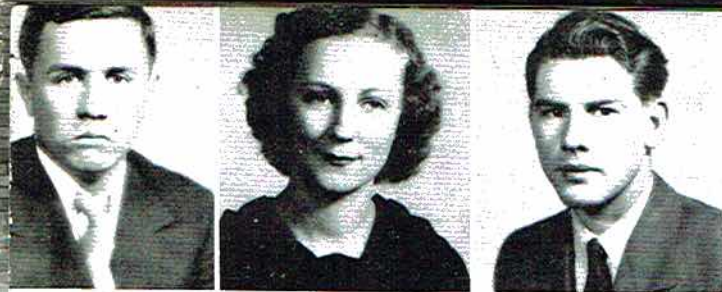


# CLASSES

*REMINDER · 1940*







# Reminder CLASS HISTORY

Four years ago we entered our freshman year in high school. The enrollment of our class was eighty-six at that time. It was the year that Mr. C. P. Nelson came to take over his duties as principal of our school.

During our freshman year we had the pleasure of participating in the first May Day program ever held at Jackson County High School. This program has been carried on successfully every year since.

In 1937 we went a step higher and were then sophomores. The enrollment of our class was one hundred and seven at the opening of school. That year the Home Economics girls helped to prepare and serve the food at the Junior-Senior Banquet.

Then in 1938 going still a step higher we became Juniors. This year we had the pleasure of entertaining the Seniors with a banquet. In order to raise money for the banquet we gave a play which was a great success. The Junior Boys won the class basketball tournament that year. The members of the team were presented with small gold basketballs.

But at last we have reached our goal. We are now Seniors. Out of the eighty-six that entered the Junior Three Class, eighty-two are finishing. This has probably been our greatest year in high school. At the first of the year we moved into the new building. We are very proud of this beautiful building which is very modern. It has many modern conveniences that the old building did not have.

When Mrs. Holland, one of the Senior home room teachers, beloved by all students resigned, the Seniors entertained with a party in her honor. Miss Anna Ruth Dicus took her place.

This is the first year that the high school has had a band. The band is under the direction of Mr. J. B. Foley. The band has improved rapidly since it was started and several instruments have been added until it now consists of fifty-four pieces.

Now that we are actually Seniors, graduation no longer seems to be some distant thing for which we have been reaching but at last seems to be a reality. In a sense we are anxious to leave high school but only because we want to explore further into the world. But regardless of what happens to us we will always remember our Alma Mater and have a great love and respect for it.

MILDRED JENKINS

## 1940

BELLOMY, WARREN, "Ned"—F. F. A. '37, '38, '39; President '40.

BERRY, EVA, "Quint"—Sportsmanship '37; Physical Education '38; F. H. A. '39; Commercial '40.

BOOZER, MURLIS, "Kitty"—F. F. A. '39, '40.

BRANNUM, MOZELY, "Little Ed"—Sportsmanship '38; Football, "J" Club, Basketball '39; Dramatic, Glee, "J" Club, Football '40.

BRAZLETON, ALMA, "Alma"—Sportsmanship '38, '39; Senior Science '40.

BREWSTER, JACK, "Jackson"—F. F. A. '38, '39; Senior Science '40.

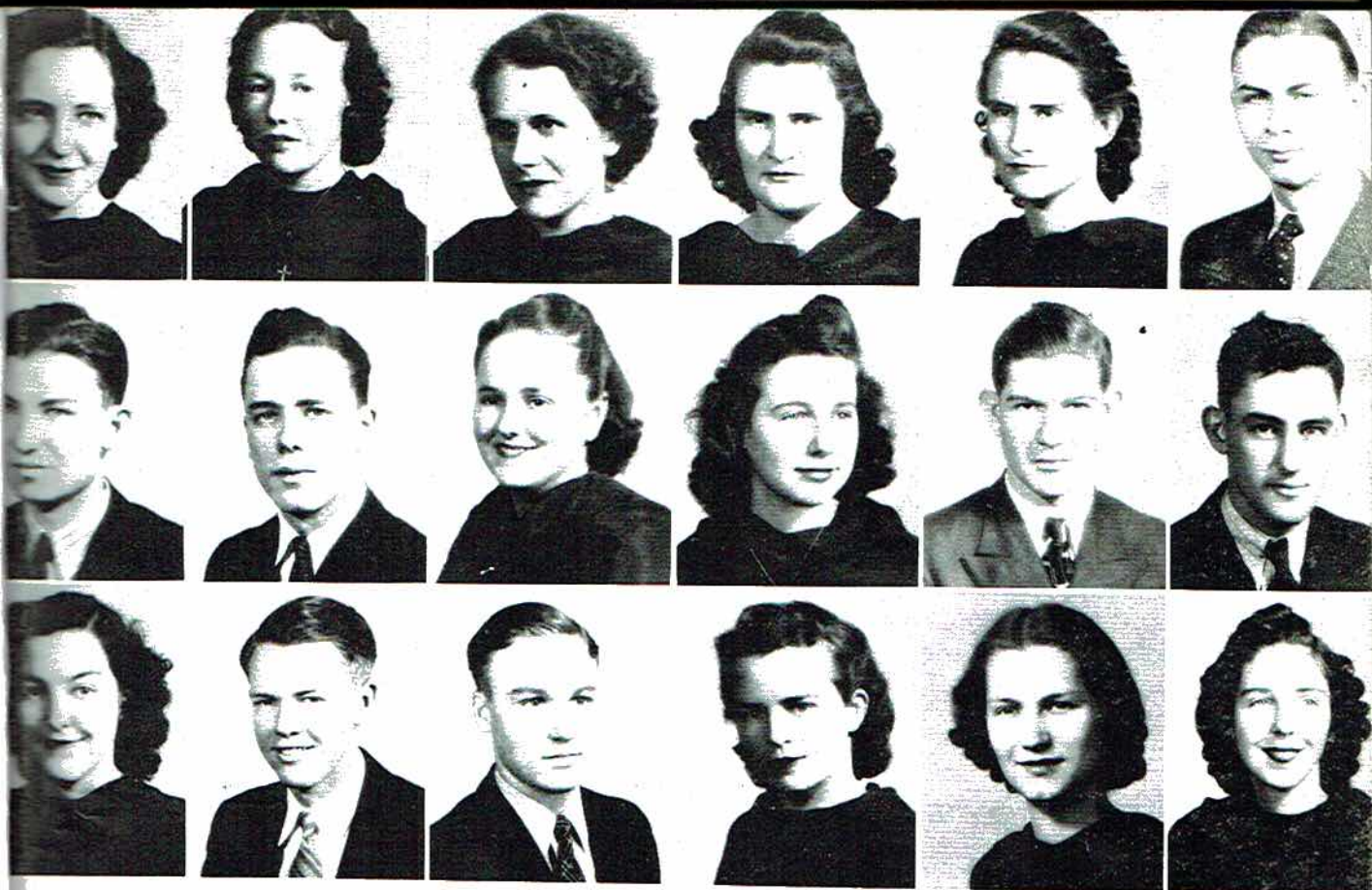
BRYANT, KENNETH, "Bottle"—Football '37, '38, '39, '40; Dramatic '37; Junior Play, Science Club '38; Who's Who '39; Football Captain '40.

BRYANT, PAULINE, "Pauline"—Physical Education '38; Sportsmanship '39; Senior Science '40.

CAMPBELL, BILLIE, "Specs"—Science '37; F. F. A. '38, '39, '40.

## JACKSON





# Seniors

CAMPBELL, SARA, "Soupy"—Physical Education, Music Metal '37; F. H. A., Queen's Court '38; Junior Play, Queen's Court, '39; Glee Club, Band, Dramatic, May Queen '40; N. H. S. '39, '40.

CARSON, ELLA REE, "Red"—Senior Science '38; F. H. A. '39; '40; N. H. S. '40.

CARTER, ANNIE DEE, "Dee"—Physical Education '37; Latin Club '38; Sportsmanship '39; Glee Club, Senior Science '40.

CARTER, MARIE, "Twin"—Dramatic '37; Sportsmanship '38; Physical Education '39; Sportsmanship '40.

CARTER, MARY, "Mury"—Latin Club '37; Sportsmanship '38, '40; Physical Education '39.

CASH, HOLLIS, "Butch"—Sportsmanship '37, '38, '40; Secretary and Treasurer Senior Science '39.

CLEMONS, JAMES, "James"—F. F. A. '37; Science '38; Senior Science '39, '40.

CLOPTON, JOHN, "Zipper"—Dramatic '37; Hi-Y '38-'39; Annual Staff '39; Who's Who '39; Junior Play, N. H. S. '40; Business Manager of Annual '40.

COFFEY, OPAL, "Hannah"—Girl Reserve '38, '39, '40; Junior Play, Dramatic '40; Glee Club '40; Who's Who '40.

CONNALLY, MATTIE MAY, "Macedonia"—F. H. A. '38, '39; Commercial '39, '40.

COOK, CHARLES, "Tarpin"—F. F. A. '37, '39; Sportsmanship '38; Senior Science '40.

DAWSON, HOWARD, "Chicken"—F. F. A. '38; Commercial '39; Vice-President Band '40.

DEAN, OPAL GEANETTA, "Dizzy"—Sportsmanship '37; F. H. A. '38; Girl Reserve '39; Commercial '40; Glee Club '40; Dramatic '40; Who's Who '40; Band Sponsor '40.

DERRICK, WILLIAM, "Cotton Top"—Hi-Y '37, '38, '39; F. F. A. '40; Glee Club '40; Dramatic '40; May King '40; Annual Staff '40.

DICUS, GEORGE, "Pinky"—Sportsmanship '37; Hi-Y '38, '39; Commercial '40; Dramatic '40.

DOLBERRY, ANNIE LEE "Dolberry"—Physical Education '37, '39; Sportsmanship '38; F. H. A. '40.

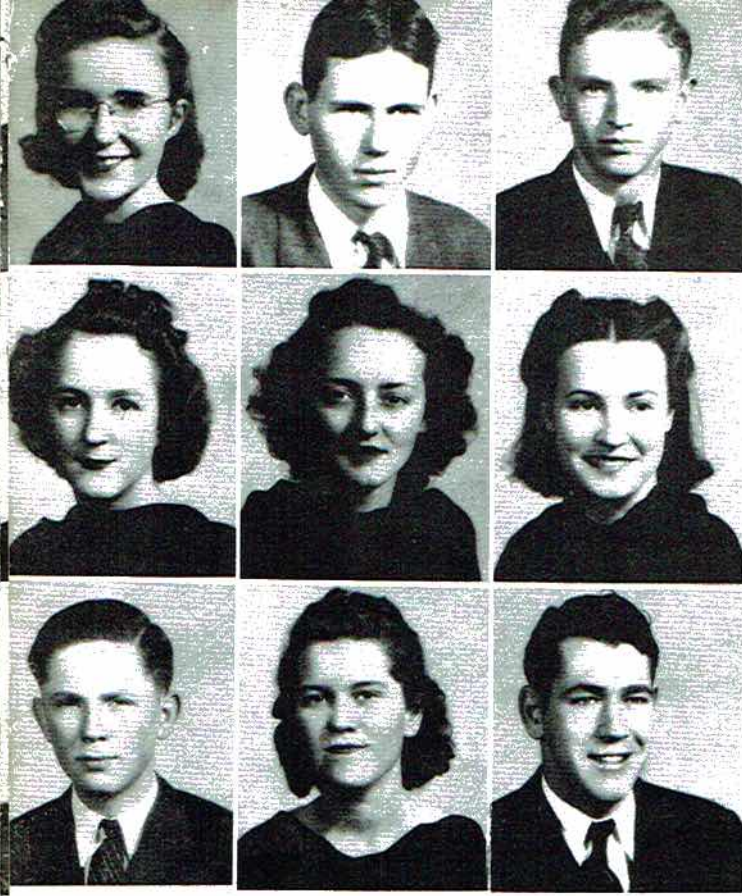
DOWNEY, VIRGINIA, "Bill"—Physical Education '37; Girl Reserve '38, '39, '40; Glee Club '40; Dramatic '40; Annual Staff '40; H. H. S. '40.

DUNCAN, HILDA, "Dunc"—Sportsmanship '37, '38, '39; Senior Science '40.

C O U N T Y

H I G H





# Reminder

*Dearest Mrs. Holland:*

Airhostess Lalia Keith has just adjusted a pillow under my head and loosened my safety belt, so now I am well on my way to Washington. While there, I shall see J. W. Holder, noted pitcher for the "Washington Senators," pitch the opening game. Claude Jones is the manager of the team, and it will be quite a thrill to see President Walter Proctor pitch out the first ball.

A large number of distinguished people are on this plane, piloted by Charles Cook and his co-pilot Jack Brewster. Dr. John Edward Johnson, President of U. C. L. A., his two secretaries, Edna Lovelady, and Eloise Gross, and members of his faculty, Edith Green, Irene Gibbs, Ella Ree Carson, Annie Lee Dolberry, and Alma Brazleton, are enroute to the N. E. A. in New York. Elizabeth Johnson, Charles Lankford, Billy T. Campbell, and Dr. Virginia Downey are returning to take up their duties in the Rockefeller Institute. We were quite surprised to find Opal Dean, you know the beautiful movie star, and her secretary, Veda Wynne, and Miss Dean's leading man, Charles Haggard, enroute to the premiere of "Fallies of J. C. H. S." in Scottsboro, Alabama.

Monday night, 8:30.

Excitement! We've had it! Can you imagine our coming all the way from San Francisco without a mishap and then colliding with landing. Fortunately, no one was injured except Mary Proctor, a designer for M. G. M. Studios. Downtown we saw James Clemons, who if you remember was undecided as to his profession when he left high school, selling pencils on the street. We had lunch with Sam Simmons, who has just succeeded Howard Green as head of the "F. B. I."

After lunch we went to the Mayflower Hotel and were registered by Warren Bellomy. After having settled in our room we received a call from Senator Homer L. Morris inviting us to a gathering of our old classmates on his palatial yacht now anchored at the mouth of the Potomac. Incidentally, he told me while he was in the South Seas on his recent world cruise he saw John Clopton, who was the most apt to succeed in the Class of '40, diving for pennies near the shore. At the party we saw Mary Burns Shook, Clara Weaver, Eva Berry, Sara Kelly, and Miriam Sellers, who are still living in Scottsboro. They told me the old town is unchanged and that Virginia Lipscomb, Helen Snodgrass, and Herbert Roden are operating the "Cherry Florist Shoppe", Mildred Jenkins, Mildred Machen, and Annie Marie Smith have made the Scottsboro Public Library one of the best in the South. Can you imagine George Dicus being Chief of Police? It's true!

Having a call to return to Los Angeles to take charge of the decorating of the home of Lavilla Ferguson, opera star—I must close for I still have some packing to do.

Affectionately,

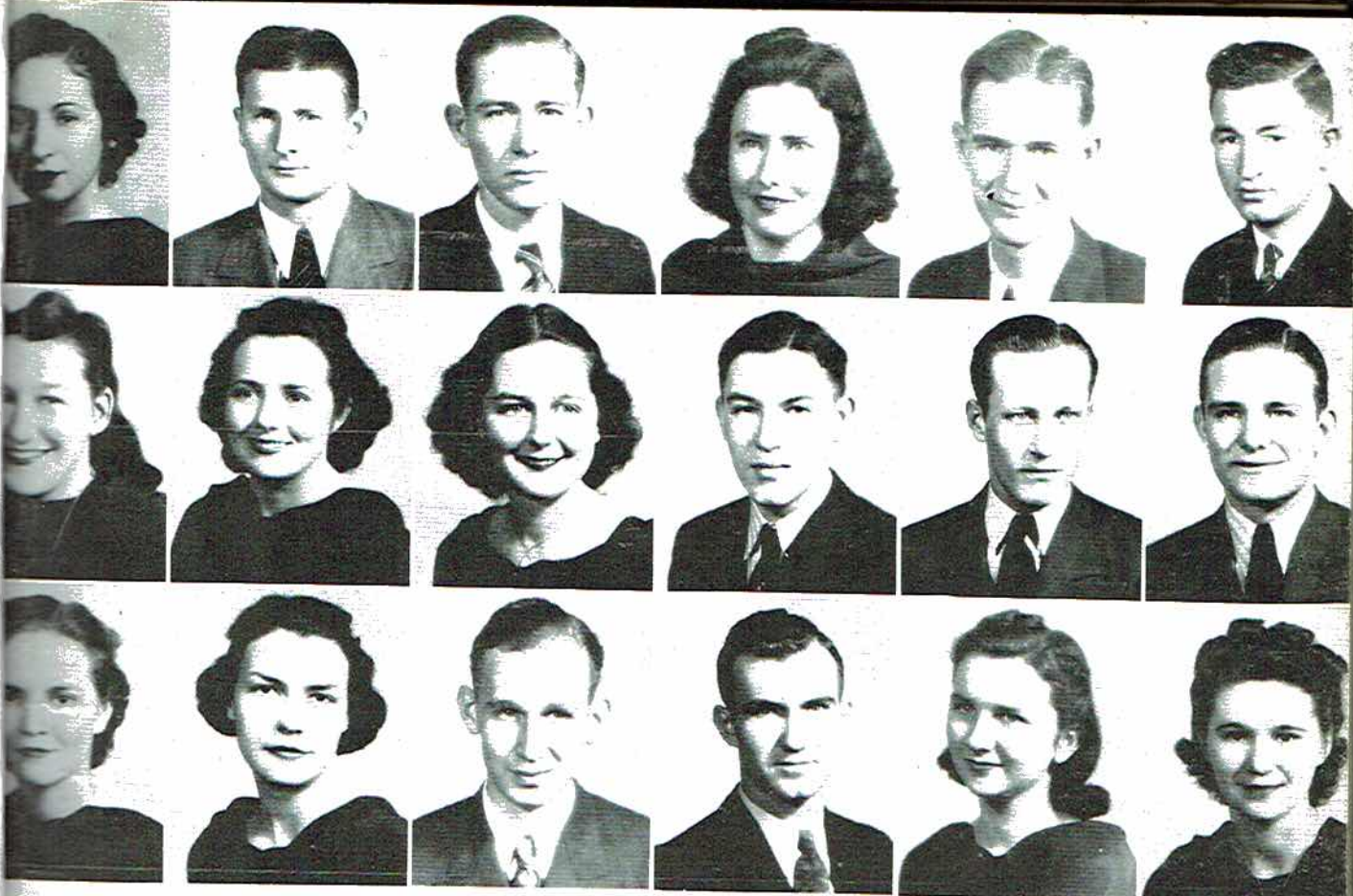
Jane Starkey.

# 1940

- FERGUSON, LAVILLA, "Granny"—Girl Reserve '39; President Junior Play '39; N. H. S. '40; Glee Club '40; Dramatic '40; Girl Reserve '40; Annual Staff '40.
- FRICKS, CECIL, "Cece"—Sportsmanship '39, '40.
- GARNER, FRED, "Ted"—F. F. A. '38, '39; Joe Wheeler '40.
- GEREN, L. V., "Little Bit"—Sportsmanship '37; Secretary Sportsmanship '38; Physical Education '39; Secretary Commercial '40.
- GIBBS, IRENE, "Flap"—Sportsmanship '37; Vice-President Sportsmanship '38; Girl Reserve '39; Sportsmanship '40.
- GREEN, EDITH TEMPERANCE, "Tempie"—Physical Education '37; Sportsmanship '38; N. H. S. '39; President Commercial '40; Reporter N. H. S. '40; Annual Staff '40; Who's Who '40.
- GREEN, HOWARD, "Greenie"—Sportsmanship '37, '38, '39, '40.
- GROSS, ELOISE, "Flopsy"—Physical Education '37; F. H. A. '38; Girl Reserve '39, '40; Dramatic '40; President Glee Club '40.
- HAGGARD, CHARLES, "Handsome"—"J" Club '40; Football '40; Dramatic '40; Glee Club '40; Who's Who '40; Vice-President Senior Class '40.

# JACKSON





# Seniors

HALL, LALIA, "Lalia"—Physical Education '37; F. H. A. '38, '39; Girl Reserve '40.

HANSARD, PICK, "Pick"—Basketball '38, '39, '40; "J" Club '38, '39, '40; Football '40.

HESS, JIM, "Jonath"—F. F. A. '37, '38, '39, '40.

HOLCOMB, VELMA, "Velma"—Senior Science '40.

HOLDER, J. W. "Slim"—Sportsmanship '37; F. F. A. '38, '39, '40.

HOLDER, FRED, "Cannon Ball"—F. F. A. '37, '38, '39, '40.

HUGHES, MARY LOU, "Doc"—Senior Science '39; Sportsmanship '40; Glee Club '40; N. H. S. '40.

JENKINS, MILDRED STRATHER, "Jeep"—Physical Education '37; F. H. A. '38; President Girl Reserve '39; Junior Play, Commercial '40; President Glee Club '40; Dramatic '40; Cheer Leader '40; News Staff '40.

JOHNSON, ELIZABETH, "Slew"—Physical Education '37; Sportsmanship '38; N. H. S. '39, '40; Cheer Leader '40; Glee Club '40; Band '40; Vice-President Dramatic Club '40; Who's Who '40; Queen's Court '40; Annual Staff '40.

JOHNSON, JOHN EDWARD, "Ed"—Sportsmanship '39; Commercial '40; News Staff '40; N. H. S. '40; Dramatic '40; Glee Club '40; Who's Who '40.

JONES, CLAUDE, "Baker"—Sportsmanship '37; Vice-President Junior Class '39; Alternate Captain Football Team '39; President "J" Club '40; Dramatic '40; Basketball '39, '40; Football '39, '40; Who's Who '40; Secretary and Treasurer of "J" Club '39.

JONES, STANLEY, "Jessie"—Sportsmanship '37; "J" Club '39, '40; Football '39, '40; Basketball '39, '40; N. H. S. '40; Glee Club '40; Dramatic '40; Annual Staff '40; Who's Who '40.

KEITH, LALIA, "Keith"—Sportsmanship '37, '38; Variety '37; Dramatic '39, '40; Girl Reserve '40; Annual Staff '40; May Court '40.

KELLY, SARA, "Sara Dock"—Physical Education '37; F. H. A. '38, '39, '40; President F. H. A. '39; Glee Club '40; Dramatic '40; N. H. S. '40.

LANKFORD, CHARLES, "Rabbit"—Sportsmanship '37; F. F. A. '39; Senior Science '38, '40.

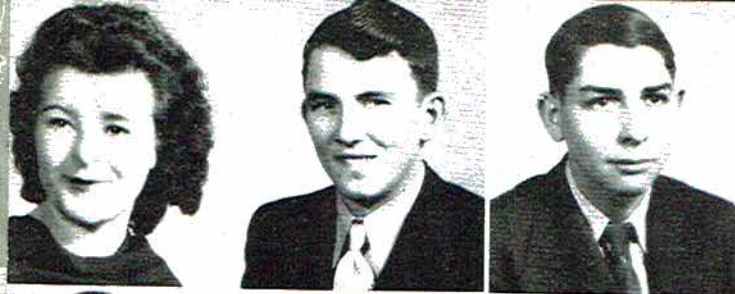
LEWIS, GORDON, "Joe"—F. F. A. '38, '39; Debating Club '40. LIPSCOMB, VIRGINIA, "Jenna"—Sportsmanship '37; F. H. A. '38; N. H. S. '39, '40; Girl Reserve '40.

LOVELADY, EDNA PRINCE, "Princie"—Glee Club '37; Physical Education '38; N. H. S. '39, '40; Commercial '40; Who's Who '40.

C O U N T Y

H I G H





# Reminder

## LAST WILL AND TESTAMENT

We, the Senior Class of 1940, being sound in mind and body, and realizing that the time has come for us to lay down our childish burdens and pick up the worries and cares of adults, do hereby make this last will and testament.

We bequeath:

Pick Hansard's athletic ability to "Shag" Hayes, Charles Haggard's handsomeness and Marie Ryan to Dub Phillips, Opal Coffey's wittiness to Shirley Boyd, Charles Cook's ability to improve to A. B. Brandon, Sam Simmons and Mose Brannum's "boat" to Charles David Presley and John Price, Virginia Downey's Oldsmobile and lunch hour to Bubs Bridges and Laura Mae Chafin;

Elizabeth Johnson's "cuteness" to Marie Lipscomb, Jane Starkey's popularity to Imogene McCrary, Mary Shook's sarcasm to Dell Clopton, and Opal Dean's beauty to be equally divided among all the Junior girls, (of course they don't need it);

Hilda Duncan and Ella Ree Carson's dependability to Alice White and Shirley Boyd, Miriam Sellers' ability to cook to Forrestine Bryant, Jenna Lipscomb's dignity to Marie, Mildred Jenkins' 130 pounds to Mr. Huddleston, and Bottle Bryant's soda-jerking to Moody Page, Sara Campbell's Mercury to Helen Shelley, Eloise Gross's office job to Mary Evelyn Presley, Winnie Swenson's brogue to W. L. Smith, the Carter twins' identification tags to the Wynne twins, Wormy Thomas's presidency of N. H. S. to John Milton Stockton, J. D. Thomason's influence with Balfour to Fred Saunders, Pauline Bryant's desire to finish high school to Imogene Culpepper, Velma Holcomb's laziness to Lela Carter;

J. W. Holder's "Million-Dollar legs" to Leonard Latham, Warren Bellomy's studiousness to Ed Swaim, Homer Lee Morris's book, "Wise Cracks," to Bryce Morris, Robert Morris' big hands to J. Morgan Thomas, Edna Lovelady's ability to write shorthand to Josephine Roach, Kinyon Vinson's interest in the Ritz Theatre to Horton Devers, Charles Lankford's knowledge of Chemistry to Jimmy Snodgrass, Hilda Duncan's artistic ability to Sue Patrick, Stanley Jones' "best-all-aroundness" to Dub Phillips, Claude Jones' popularity to Holly Carter, Eva Berry's ambition to Flora Dell Johns, Mattie Connally's Shorthand book to Louise Fennell;

Lalia Keith's beautiful brown eyes to Shorty Robertson, Edith Green's citizenship to little brother Stanley, Howard Green's wittiness to Leon Smith, and Corrine Petty's ability to "get her man" to Louise Bohannon, John Clapton's ability to "succeed" to Wib Gentle, Alma Brazleton's ability to square dance to Dot Blevins, Hetty Snodgrass' Plymouth to Bebe Jones, Robert Wann's place in the Senior Class to H. P. Emmett;

William Derrick's position of "office flunkie" to Tiger Martin, Herbert Roden's acting ability and winning ways to John Ashmore, L. V. Green's Scarlett O'Hara waist to Middy Collins, Mary Lou Hughes' books to Doodle McCutchen;

And I, Lavilla Ferguson, will my job as collection agent to Freida Smith.

LAVILLA FERGUSON, Class Lawyer.

# 1940

MATCHEN, MILDRED, "Abe"--Sportsmanship '37, '38, '39; Senior Science '40.

MORRIS, HOMER L., "Chuck"--Sportsmanship '37, '38; Senior Science '39, '40.

MORRIS, ROBERT, "Peanut"--President Science Club '37; Hi-Y '38; F. F. A. '39; Treasurer F. F. A. '40.

OLINGER, WINIFRED, "Winnie"--F. H. A. '40.

OWENS, HUBERT, "Red"--Sportsmanship '37; F. F. A. '38, '39; Sportsmanship '40.

PETTY, CORINNE, "Petty"--Variety '37; Senior Physical Education '38 '39; F. H. A. '40.

PROCTOR, MARIE, "Marie"--Variety '37; Senior Physical Education '38, '39; F. H. A. '40.

PROCTOR, WALTER, "Proc"--Science '37; Sportsmanship '38, '39, '40.

ROBERTSON, WILLARD, "Mutt"--F. F. A. '37, '38, '39, '40.

# JACKSON



RODEN, HERB  
'39; "J"

Staff, SEN  
SAMPLES, GE  
retary Jun  
'40.

SELLERS, MIRIA  
and Treas  
President

SHOOK, MAR  
Dramatic  
Play, Wh  
Club Rep  
cording S

SIMMONS, SA  
ball '38;  
Wheeler '40.

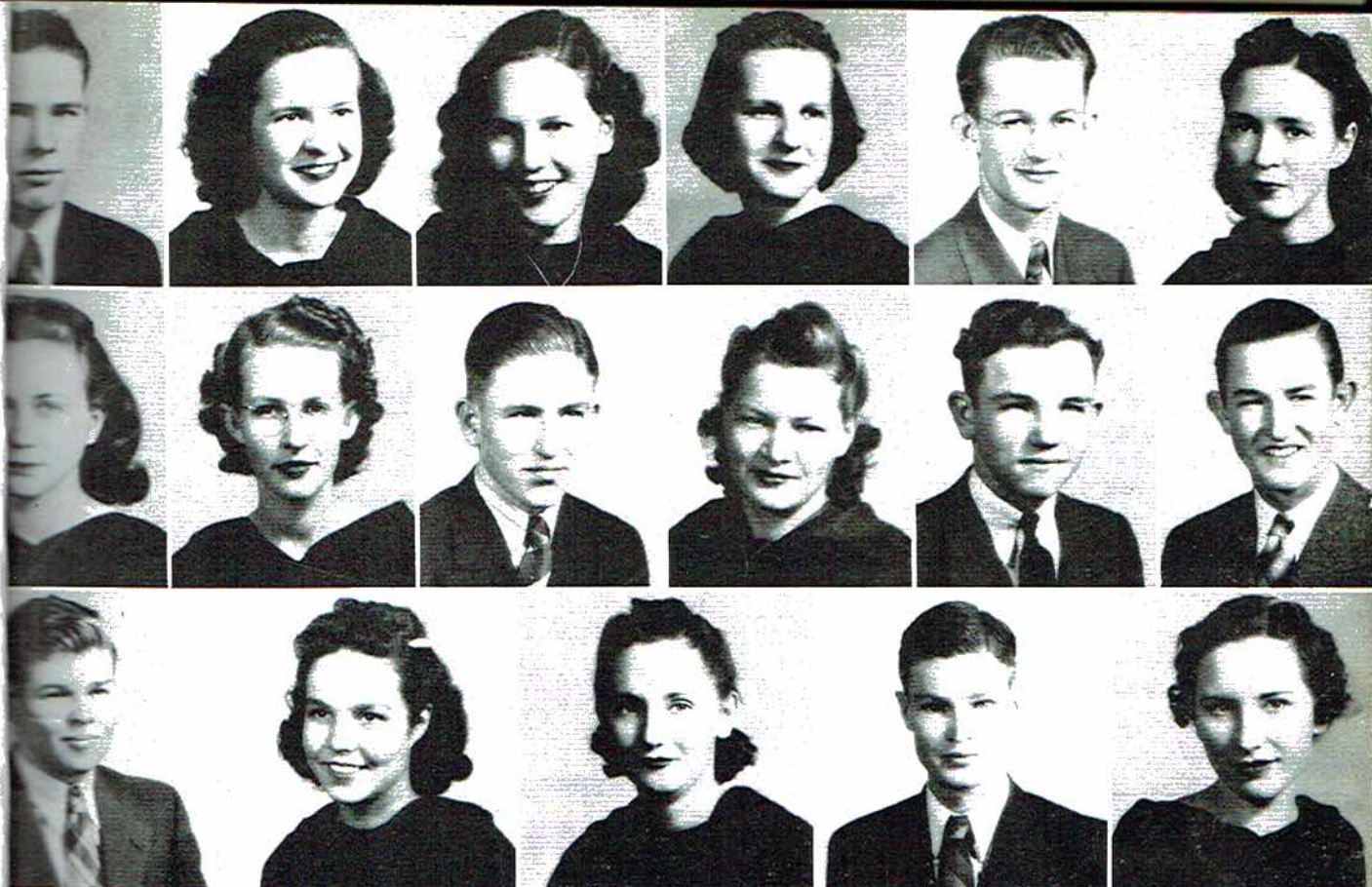
SMITH, ANNE  
'40.

STARKEY, JAN  
'38; N. H  
Treasur

tory and T  
SWENSON, WI  
Club, Ann

THOMAS, BUR  
Vice-Presid  
President '40





# Seniors

RODEN, HERBERT, "Dusty"—Dramatic '37; Hi-Y '38; Junior Play '39; "J" Club, Football, Dramatic—Vice-President, Annual Staff, Senior Class—President '40.

SAMPLES, GENEVA, "Honey Bunch"—Sportsmanship '38; Secretary Junior Class, N. H. S. '39; Sportsmanship, N. H. S. '40.

SELLERS, MIRIAM, "Toady"—Glee Club '37; F. H. A.—Secretary and Treasurer '38; F. H. A.—Vice-President '39; F. H. A.—President '40.

SHOOK, MARY BURNS, "Burnsey"—Physical Education '37; Dramatic '37, '40; Sportsmanship '38; N. H. S., Junior Play, Who's Who, Annual Staff, News Staff '39; Band Club Reporter, Glee Club, Editor Annual, N. H. S.—Recording Secretary '40.

SIMMONS, SAM, "Butterfinger"—"J" Club '37; Hi-Y, Basketball '38; Hi-Y, Football '39; Dramatic, Glee Club, Joe Wheeler '40.

SMITH, ANNE MARIE, "Smitty"—Sportsmanship '37, '38, '39, '40.

STARKEY, JANE, "Lili"—Physical Education '37; Sportsmanship '38; N. H. S. '39; Glee Club, Dramatic, Secretary and Treasurer of N. H. S., Annual Staff, Girl Reserve, Secretary and Treasurer of Senior Class '40.

SWENSON, WINIFRED, "Yankee"—Dramatic, Girl Reserve, Glee Club, Annual Staff '40.

THOMAS, BURON, "Wormy"—Sportsmanship '37, '38; N. H. S.—Vice-President '39; Commercial Vice-President '40; N. H. S. President '40; Basketball, Who's Who '40.

THOMAS, JULIA MAUDE, "Tommy"—Physical Education '37; F. H. A. '38; Sportsmanship '40; N. H. S. '39; Glee Club, N. H. S.—Vice-President '40; Who's Who '40.

THOMASON, J. D., "Balfour"—F. F. A. '38; Sportsmanship '39; President of Junior Class '39; N. H. S. '39; Senior Science, Dramatic, Glee Club, N. H. S., Assistant Editor of Annual '40.

VINSON, KINYON, "Potty"—Sportsmanship '37; Sportsmanship, Hi-Y '38; Hi-Y, Football, May King '39; Football, Glee Club, "J" Club, Dramatic '40.

WANN, ROBERT, "Blondie"—Sportsmanship '37; Hi-Y '38, '39; "J" Club, Football, Band '40.

WEAVER, CLARA, "Weaver"—F. H. A. '39; Glee Club, Sportsmanship Club '40.

WELBORN, RUTH, "Ruthie"—Physical Education '38; Sportsmanship '39, '40; N. H. S. '40.

WILSON, OZELL, "Red"—F. F. A., Basketball '40.

WYNNNE, VEDA, "Veda"—Physical Education '37; Senior Science Club '38, '39, '40.

C O U N T Y

H I G H



# R E M I N D E R • 1 9 4 0

## ROLL

Gene Airheart, Anderson, Ashmore, Eunice Beard, Jane Benson, Doris Bentley, Bentley, Bishop, Shirley Boyd, Bradford, Laura Brazleton, Bridges, Eliza Bryant, Forestine Bryant, Anna Bullard, Fred Bynum, Jane Campbell, Carter, Velma Carter, Dell Clopton, Mildred Collins, Hazel Crye, Gladson Culpepper, Davis, Lorene Dolberry, Sam Duncan, H. P. Emmett, Louise Fennell, Aaron Fossett, Tempie Gant, Gentle, A. G. Gilbreath, Junior Gist, Hackworth, Euphie Hall, Vinnie Hamilton, Lilly Henegar, Louise Henshaw, Dimple Johnson, Flora Johns, Keown, Opal Little, Eleanor Miller, Fred Michaels, Moore, Bryce Morris, Grace McBryde, Lula McCamy, Imogene McCrary, Clyde McLemore, Jeanette McKenzie, Flora Nichols, Harold Nye, Hazel Olinger, Kathleen Pass, Sue Patrick, Winford Patterson, Lucille Payne, Payne, A. L. Petty, Dub Phillips, Lena Phillips, C. D. Presley, A. P. Price, Jr., John Price, Josephine Roach, LeBron Rooks, Marie Ryan, Sanders, Pauline Selby, Gus Sentell, Smith, Frieda Smith, Gordon Smith, W. L. Smith, Jimmie Snodgrass, Imogene Stanfield, Clara Stewart, John M. Stockton, Mary K. Sumner, Ed Swain, Ruth Thomas, Margie Thomas, Morgan Thomas, Earl Tipton, Bernice Utter, Lena Wallingsford, Faye Wann, Alice White, Williams, Mary Winger, Allie Womack, Brooks Woodall, Rex Word, Lillian Wynne, Lydia Wynne.

## SENIOR TWO



MR. THOMAS  
MRS. JONES  
MR. PHILLIPS  
Sponsors



A. B. BRANDON  
President  
RUTH McCUTCHEON  
Vice-President  
WIB GENTLE  
Secretary and Treasurer





WILL HAYES  
 W. BORDEN  
 WEDGWORTH  
 Sponsors



HELEN FOSHEE  
 President  
 BOB CAMPBELL  
 Vice-President  
 LOIS STATON  
 Secretary and Treasurer

# SENIOR ONE

## ROLL

Richard Anderson, Rayford Ashmore, Joe Barber, Troy Bellomy, Tommy Bellomy, J. C. Bishop, Dot Blevins, Louise Bohannon, Berith Bradford, Isaac Brandon, James Brazleton, Kenneth Brewster, Mary Brown, Preston Bryant, Sanders Bryant, Kathleen Bulman, Ester Carson, Clayton Carter, Shirley Carter, Elton Caston, Dorothy Chambliss, Beulah Christa, J. B. Clouse, Mozell Collins, Bill Cornelison, Phil Cornelison, Christine Cowley, Rozanne Cox, Edna Crawford, Mozell Dawson, Devers, Nellie Duncan, Annie Evans, Floyd Fossett, Frazier, Thomas Freeman, Jack Gayle, Charles Giddens, Doyle Gist, Stanley Green, Mayme Hamilton, Cornelia Hancock, Jack Harris, M. D. Hayes, Billy Heath, Quillion Hilly, Pauline Holder, Lillian Honey, Liles Johns, Marie Johns, Dan Kelley, Ben Kirby, Walter Latham, John Law, Louise Lockard, Jessie Machen, Granville Martin, Earline Morris, Kathleen McDonald, Lester McGuffey, Jerry Meek, John Michaels, Evelyn Money, Hassel Nichols, Page, Joy Page, Erskine Parks, Becil Patterson, Lois Pendergrass, Clarence Penny, Alda Petty, Mary Presley, Mary Proctor, Kathleen Rice, Bonnie Russell, Frances Sampson, Opalea Sentell, Helen Shelly, Bobby Smith, Nita Spivey, Lois Staton, Edna Staton, Mary Sumner, Jim Talkington, Rachel Taylor, June Thomas, Glendon Webb, Margaret Williamson, Thelma Womack, Nannie Womack, Billy Womack, Bryce Woosley, Billy Word, Cecil Yancey.

R E M I N D E R • 1 9 4 0





COACH O'BRIEN  
MRS. McCRARY  
Sponsors

ROBERT ROBERTSON  
President

ROBERT HARRIS  
Vice-President

BETTY PATTERSON  
Secretary and Treasurer

## JUNIOR THREE

### ROLL

Marie Adams, Annie Lee Barber, Ruth Beard, Pearl Bellamy, Edward Bergman, Ola Mae Brandon, Veda Brandon, Cleo Broadway, Marvin Bryant, Isabelle Bulman, Grace Bynum, Nora Lee Campbell, J. S. Carter, Kathryn Carter, Raymond Carter, Billy Carver, Laura Mae Chafin, Gladys Flippo, Juanita Flowers, J. W. Floyd, Sallie Mae Gilbreath, Bobbie Griffith, Tressie Harper, Harvey Helms, Frank Henshaw, Willis Henshaw, W. H. Hill, Claude Hurt, Bebe Jones, James Keith, Harold Kennamer, Leonard Latham, Marie Lipscomb, Floyd Lockard, Marie London, Maggie Mae Miller, Paul Miller, Jep Moody, Betty John Morris, Fred Osborne, Richard Patrick, Mabel Patterson, Nora Patterson, Sam Potter, Annie Mary Prince, Mary Lee Ritchie, Annie Louise Russell, Ruth Shiflett, Laura Nell Smith, Leon Smith, Hilda Stewart, Billy Stuart, Ila Sumner, Robert Sumner, Lillian Tanner, Alice Taylor, Mary Ellen Thomas, James Wallace, Albert Ward, Billy Webb, Ethel Welch, Jo Woodall.

R E M I N D E R • 1 9 4 0



MRS. THOMAS  
MISS MANN  
Sponsors

JACK SIMMONS  
President

ED PHILLIPS  
Vice-President

LONZO WININGER  
Secretary and Treasurer



## JUNIOR TWO

### ROLL

Veanilea Anderson, Gladys Mae Baty, Madelyn Beaver, Annie Bellomy, Virginia Bellomy, Betty Ruth Benson, Effie Berry, Helen Berry, Lucille Brandon, James Brandon, Elizabeth Bryant, Johnnie B. Callahan, Paul Carter, Earnestine Carver, Howard Chaney, Lonnie Chaney, Audrey Childress, Opal Clark, Kathleen Clemons, Howard Combs, Cecil Cowart, Verlon Cowart, Mildred Darwin, Eloise Dean, Dorothy Evans, Edna Mae Evans, Anna Ruth Gant, Jack Gay, Albert Green, Mary Madge Gross, Nina Gist, Eunice Hall, Hubert Harding, Lois Hayes, Marion Hethcoat, Kenneth Holder, P. W. Holder, G. H. Hollis, Una Faye Hawk, Clarence Jobe, Woodrow Judge, Wiley Kenamer, Jim Kirby, Inez Law, Ben Lindsay, W. H. Lockard, Kathleen Lusk, Billie M. McClendon, Marcus McClendon, James Michaels, John Henry Minton, Hulet Oden, Rayford Owens, Billie Ruth Prince, Eugene Rice, Elizabeth Roberts, Dorothy Roden, Raymond Rudder, Louise Rudder, Evelyn Sanders, Ruth Selby, Effie Sherill, Violet Sherill, L. V. Shiflett, Hugh Shelton, Johnny Shook, Jean Snodgrass, Mary E. Stearnes, Billy Talkington, Mary Ruth Tiffin, Bob Thomas, James Thomason, Kenneth Utter, Robert Webb, Kathleen Wood

R E M I N D E R • 1 9 4 0

Page Fifteen

1500000

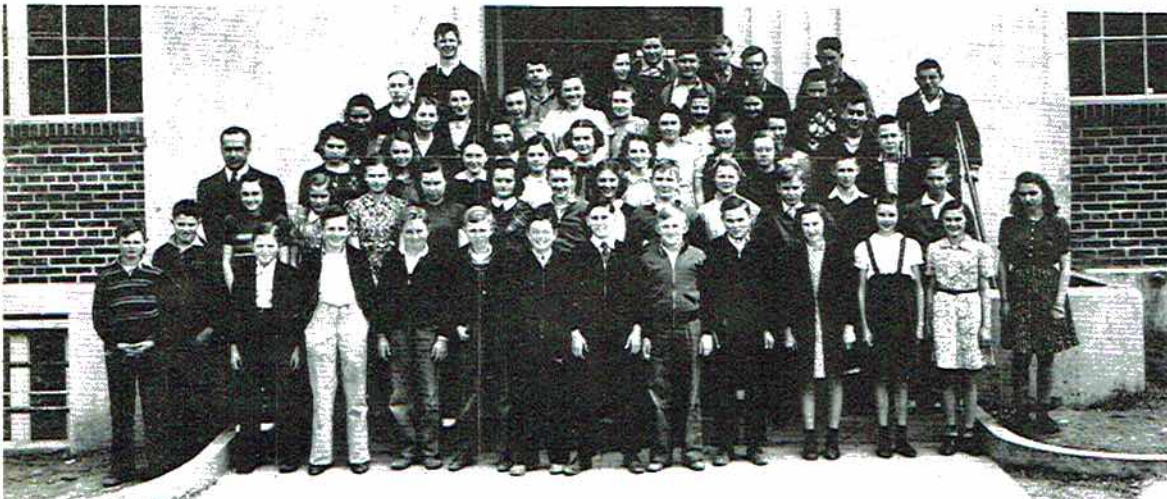


# R E M I N D E R • 1 9 4 0

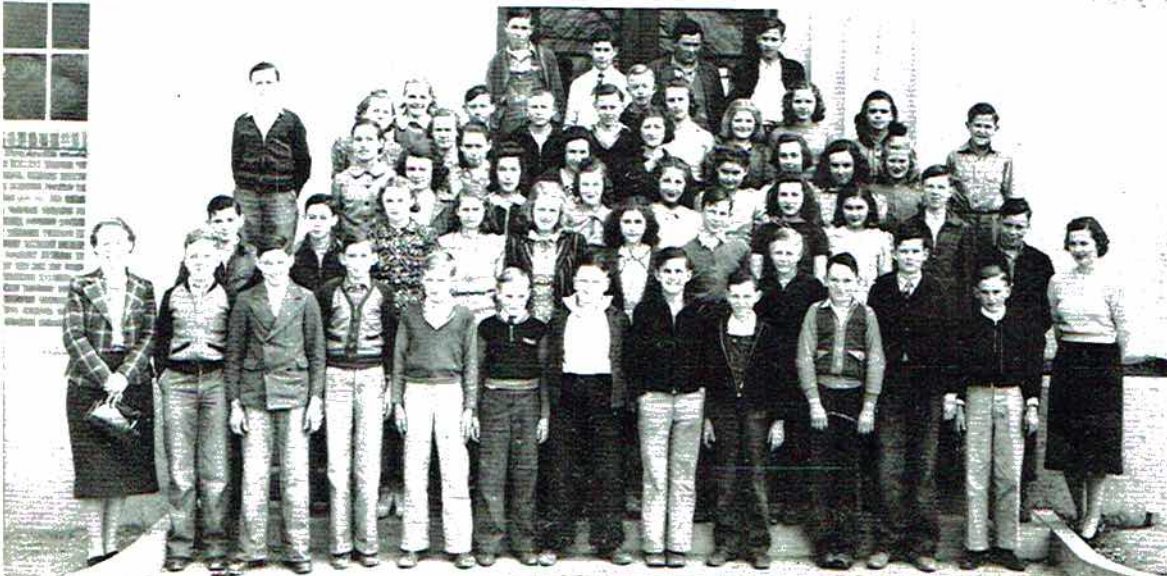
## ROLL

James Allen, Reon Ambrester, Charles Anderson, Susie Benton, J. W. Berry, Neta Bishop, Glenn Boggs, Billy Brandon, Daisy Brandon, Neal Bryant, Jewel Budman, Garth Childress, Augusta Clemens, Walter Cook, James Collins, Louise Cotten, Creed Dawson, Robert Devers, Gay Dilbeck, J. C. Dodson, Kathleen Duncan, Doris Elliott, Annie Evans, Willie Evans, D. B. Folly, Jack Foster, Etiole Gamble, Faye Gamble, Maude Gattis, Paul Gentle, Opal Gist, Kattie Hall, Newman Hall, Gladys Hamer, Elizabeth Harding, Beulah Harrison, Hugh Helms, Martha Henshaw, Lila Hodges, Bernice Holland, Betty Jo Kelly, Mazie Johnson, James Johnson, Beulah Johns, Rayford Latham, Maxine Leach, Haskel Little, Gordon Lackard, Frankie Machen, Howard Manning, Proctor Matthew, Nita Mayfield, Minnie Mayfield, Rosalee McAbee, David McCary, Jr., Richard McCamy, Leon McCamy, Junior McClendon, Mary McClendon, Loretta McCoy, Chloe Michaels, J. W. Michaels, Reuben Miller, June Miller, Vivian Minor, Milos Morris, Pauline Olinger, Billie Parks, David Parks, Dorothy Parker, Audrey Pitman, Shirley Powell, Lella Potter, Hugh Presley, Mary Proctor, Margaret Rash, Boyd Rice, George Ricker, Roy Roach, George Roach, David Shelton, Viola Shelton, Billy Shelton, Charles Shiflett, Mary Smart, Paul Smith, Inez Smith, R. A. Smith, Eileen Steeley, Ruth Steeley, Ruby Sumner, Kadie Sumner, Boyd Sumner, Sara Tanner, Mary Tate, Lylah Thomas, Earl Thomas, Lena Thomas, Betty Thomas, James Wallace, Jean Ward, Woodrow Wilhelm, Brooks Wilhelm, Dave Winiger, Eva Winiger, Ola Winiger, C. H. Winiger, Quinton Wood, Robert Wooden, Charlie Wooden, Howard Wooden, Rayford Wright

## JUNIOR ONE



MRS. BAILEY  
MRS. TURNER  
MR. FOLEY  
Sponsors



LILA JEAN HODGE  
President

SHIRLEY DELL POWELL  
Vice-President

MAZIE JOHNSON  
Secretary and Treasurer



High school days are swiftly fleeing,  
Soon we'll leave thy halls,  
Ne'er to join another meeting  
In thy hallowed walls.



# CLUBS





MRS. HAYES



SPONSOR



JANE STARKEY  
Corresponding Secretary



MARY B. SHOOK  
Recording Secretary



BYRON THOMAS  
President



JULIA M. THOMAS  
Vice President



VIRGINIA LIPSCOMB  
Reporter



SARA CAMPBELL  
Social Chairman



JANE CAMPBELL



ELLA REE CARSON



VELMA CARTER



JOHN CLOPTON



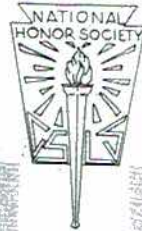
ELIZABETH CLOPTON



VIRGINIA DOWNEY



LAVILLA FERGUSON



EDITH GREEN



MARY L. HUGHES



ELIZABETH JOHNSON



STANLEY JONES



JOHN ED. JOHNSON



SARA KELLY



EDNA LOVELADY



CLYDE McLEMORE



LOUISE FENNEL



SUE PATRICK



GENEVA SAMPLER



JOHN M. STOCKTON



J. D. THOMASON



RUTH WELLBURN



LILLIAN WYNNE



LYDIA WYNNE



FAYE WANN

Membership to the National Honor Society is based on the students' qualities of Character, Scholarship, Leadership, and Service. To be elected to membership, a student must have maintained an average of "B" or higher during high school. Only Juniors and Seniors are eligible.





FAYE WANN  
 MARIE RYAN  
 LALIA KEITH  
 RUTH THOMAS  
 ELOISE GROSS  
 DORIS BENTLEY  
 JANE CAMPBELL  
 ELEANOR MILLER  
 LAVILLA FERGUSON  
 VIRGINIA LIPSCOMB  
 IMOGENE STANFIELD  
 MARY KATHERINE SUMNER

LALIE HALL  
 OPAL COFFEY  
 JANE STARKEY  
 GLENDON WEBB  
 FLORA NICHOLS  
 LOUISE BOHANON  
 LOUISE FENNELL  
 VIRGINIA DOWNEY  
 WINIFRED SWENSON  
 LENA WALLINGSFORD  
 ANNA RUTH BULLARD  
 HELEN SNODGRASS  
 (not pictured)

Our purpose is to build a fellowship of girls devoted to the task of realizing in our common life the ideals of personal and social living.





## COMMERCIAL CLUB

The Commercial Club was founded in 1938. The purpose of the Commercial Club is to promote an interest in matters of value to commercial students and to bring those students into a closer fellowship.





MARY ALLIE BROWN



LORENE DOLBERRY



ESTER MAE CARSON



ELLA REE CARSON



HAZEL CRYE



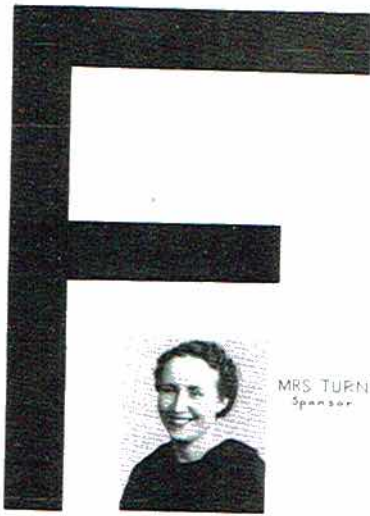
AIDA FLORENCE PETTY



CORINNE PETTY



MARIE PROCTOR



MRS. TURNER  
Sponsor



JESSIE LEE MACHEN



BERNICE UTTER



WINIFREE OLINGER



KATHLEEN McDONALD



NELLIE MCKENZIE



ANNA MAE MILLER



MAYME HAMILTON



LUCILE PAYNE



JANETTE MCKENZIE



FORESTINE BRYANT



WINNIE HAMILTON



MIRIAM SELLERS  
President



FLORABELL JOHNS  
Vice President



ANNA L. DOLBERRY  
Secretary Treasurer



SARA KELLY  
Reporter

The Future Homemakers of America is a national organization. Its purpose is to aid those girls who are studying Home Economics in planning for better homes in the future and to aid them in adjusting themselves to their environment.





MR. PHILLIPS  
Sponsor

WARREN BELLOMY  
President

JAMES PAYNE  
Vice-President

A. G. GILBREATH  
Secretary

ROBERT MORRIS  
Treasurer

TRESTER MOORE  
Reporter

## F. F. A. CLUB

### ROLL

Boyd Anderson, Richard Anderson, Joe Barber, Troy Bellomy, Tommy Bellomy, J. C. Bishop, Murlis Boozer, Isaac Brandon, Jack Bradford, James Brazelton, Kenneth Brewster, Preston Bryant, Marvin Bryant, Fred Bynum, Billie T. Campbell, Clayton Carter, Elton Caston, Gladson Culpepper, Robert Davis, William Derrick, Floyd Fossett, Thomas Freeman, Rodney Gentle, Jim Hess, Quillion Hilley, J. W. Holder, Fred Holder, Claude Hurt, Lyles Johns, Leonard Latham, Walter Latham, John Law, Lloyd Lockard, Granville Martin, Fred Michaels, Robert Morris, Lester McGuffey, Hassel Nichols, Lebron Brooks, Gordon Smith, Alfred Smith, Jim Talkington, J. M. Thomas, Earl Tipton, Ozell Wilson, Brooks Woodall, Rex Word, Cecil Yancey.

R E M I N D E R • 1 9 4 0





## MUSIC CLUB

MRS. LYLES HEMBREE

Teacher

### ROLL

Reon Ambrester, Elizabeth Bryant, Sara Campbell, Elizabeth Dell Clopton, Mildred Collins, Juanita Flowers, Lila Jean Hodges, Elizabeth Johnson, Maizie Johnson, Eleanor Miller, Evelyn Money, David McCrary, Jr., Imogene McCrary, Joy Page, Shirley Dell Powell, Mary Evelyn Presley, Hugh Sol Presley, Annie Louise Russell, Freida Smith, Vivian Stubbs, Mary Tate, Bettye Jane Thomas, Mary Ellen Thomas, Ruth Thomas, Billy Madge Word.

R E M I N D E R • 1 9 4 0





MRS. THOMAS  
Sponsor

LOIS PENDERGRASS  
President

JO WOODALL  
Vice-President

MARY ELLEN THOMAS  
Secretary

HILDA STEWART  
Treasurer

LENA MAE PHILLIPS  
Reporter

## SENIOR PHYSICAL EDUCATION CLUB

### ROLL

Annie Lee Barber, Berith Bradford, Alma Brazelton, Laura Brazelton, Eliza Bryant, Isabelle Bulman, Marie Carter, Shirley Carter, Beulah Christa, Mozelle Collins, Edna Lou Crawford, Nellie Tom Duncan, Alma Elliott, Lilly Ann Fennell, Juanita Flowers, Ruby Foshee, Euphine Hall, Cornelia Hancock, Lily Kate Henegar, Pauline Holder, Lillian Honey, Maggie Mae Miller, Billie Prince, Kathleen Rice, Ila Sumner, Ethel Welch, Margaret Williamson, Ollie Womack, Thelma Womack.

R E M I N D E R • 1 9 4 0

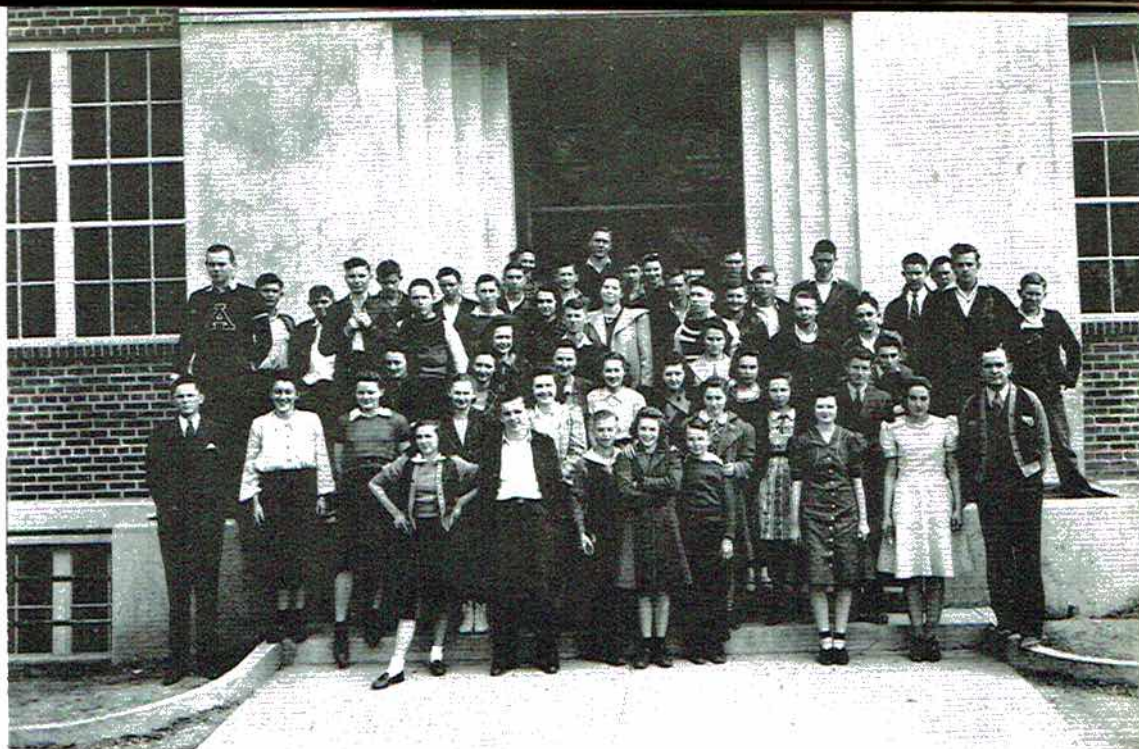


COACH O'BRIEN  
Sponsor

LOUISE HENSHAW  
President

ALICE WHITE  
Vice-President

HEMA CARTER  
Secretary and Treasurer



## SPORTSMANSHIP CLUB

### ROLL

John Ashmore, Neta Bishop, Lucille Brandon, Johnnie Callahan, Billy Campbell, Mary Carter, Paul Carter, Raymond Carter, Billy Carver, Howard Combs, Eloise Dean, J. W. Floyd, Cecil Fricks, Irene Gibbs, Albert Green, Howard Green, Frank Henshaw, Willis Henshaw, P. W. Holder, Mary Lou Hughes, Clarence Jobe, Bebe Jones, Woodrow Judge, Marie Lipscomb, Mabel Long, Billie Marie McClendon, Earline Morris, Jep Moody, Hubert Owens, Walter Proctor, Robert Robertson, Geneva Samples, Helen Shelley, Leon Smith, Annie Marie Smith, Nita Spivey, Pauline Selby, Margie Thomas, Julia Thomas, James Thompson, Albert Ward, Clara Weaver, Ruth Welborn, Lonzo Winger.

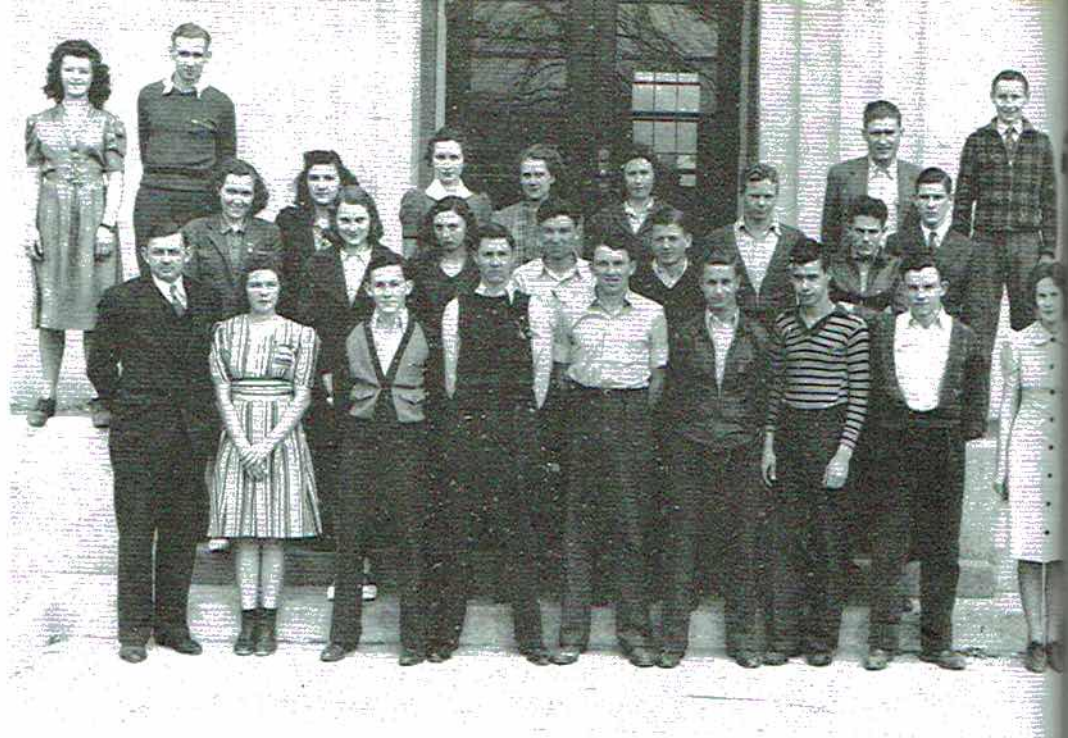
R E M I N D E R • 1 9 4 0



MR. BORDEN  
Sponsor

A. P. PRICE  
President

JOHN MILTON STOCKTON  
Secretary and Treasurer



**SENIOR SCIENCE CLUB**  
ROLL

James Bentley, Jack Brewster, Pauline Bryant, Annie Dee Carter, Holly Carter, James Clemons, Charles Cook, Christine Cowley, Hilda Duncan, Aaron Fossett, Junior Gist, Jack Harris, Velma Holcomb, Charles Lee Lankford, Opal Little, Louise Lockard, Mildred Machen, Lula McCamy, Clyde McLemore, Homer Lee Morris, A. L. Petty, Hazel Olinger, Jimmy Snodgrass, Veda Wynne.

**JOE WHEELER CLUB**  
ROLL

Alva Bellomy, Edward Bergman, Cleo Broadway, Bill Brandon, Sanders Bryant, Elizabeth Bryant, Neal Bryant, J. S. Carter, Lonnie Chaney, Bill Cornelison, Fred Garner, Sallie Mae Gilbreath, Stanley Green, Marion Heathcoate, James Keith, Ben Lindsay, Leon McCamy, Richard McCamy, James Miller, Paul Miller, Fred Osborne, Annie Louise Russell, Evelyn Money, Billy Shelton, Donald Stewart, Billy Stewart, Louise Stewart, Sam Simmons, R. E. Smith, Lillian Tanner, Sara Tanner, Robert Wooden, Charles Wooden, Mary Winniger, Lillian Wynne, Charles David Presley, Fred Sanders, John Price.



MR. THOMAS  
Sponsor

ROBERT HARRIS  
President

BILLY WEBB  
Vice-President

LYDIA WYNNE  
Secretary and Treasurer

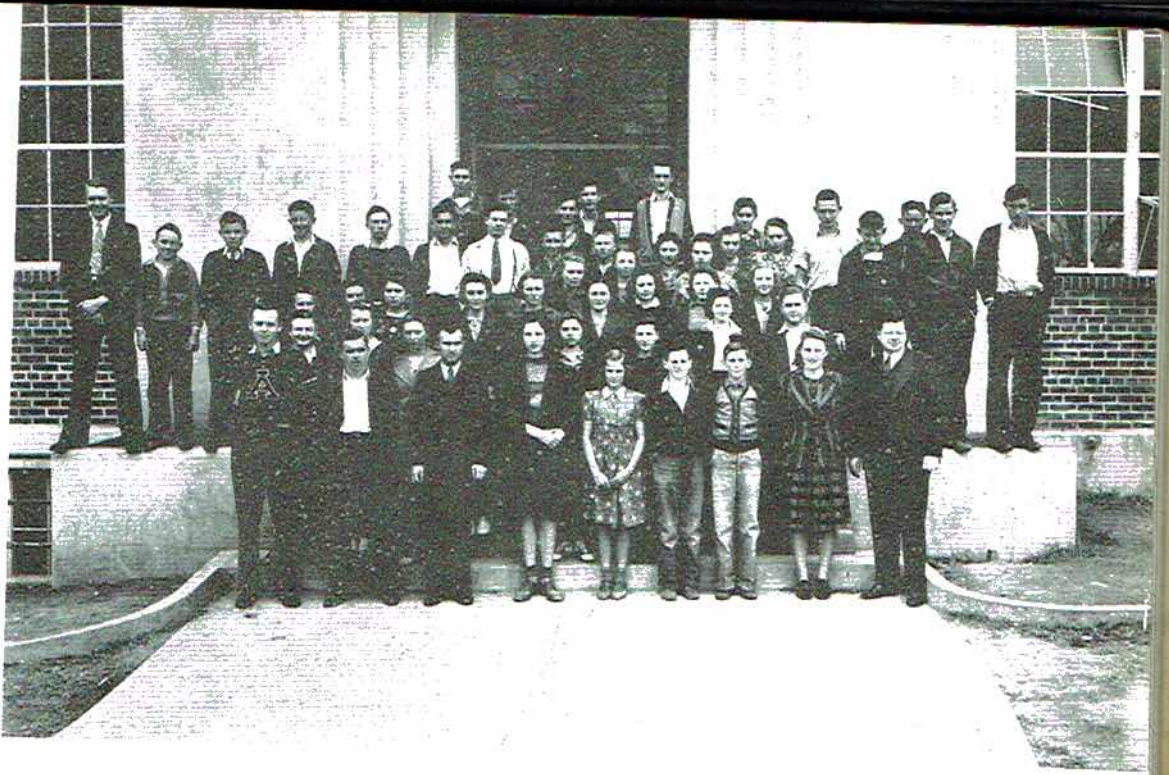
DAN KELLY  
Sergeant-at-Arms



MRS. HUDDLESTON  
Sponsor

FRANCIS SAMPSON  
President

LOIS STATON  
Secretary and Treasurer



## DEBATING CLUB

### ROLL

James Roy Allen, Gladys Mae Baty, James Brandon, Jewel Bulman, Howard Chaney, Philip Cornelison, Louise Cotton, Mozell Dawson, Robert Devers, Annie Mae Evans, Faye Gamble, Marie Johns, Gordon Lewis, Haskel Little, Mary McClendon, James Michaels, Eva Patter, Lela Mae Patter, Mary Ruth Proctor, Eugene Rice, Boyd Rice, George L. Roach, Roy Lynn Roach, Raymond Rudder, Bonnie Russell, Violet Sherrill, Viola Shelton, Charles Shiflett, Ruth Shiflett, Edna Staton, Robert Webb, Dave Winingar, Nannie Lee Womack, Howard Wood, Rayford Wright.

## HOBBY CLUB

### ROLL

Pearl Bellomy, Virginia Bellomy, Annie Bellomy, Susie Benton, Helen Berry, Daisy Brandon, Ola Mae Brandon, Veda Brandon, Grace Bynum, Cecil Cowart, Maude Gattis, Eunice Hall, Gladys Hamer, Hubert Harding, Elizabeth Harding, Tressis Harper, Bertye Joe Kelly, Maxine Leach, Howard Manning, Vivian Minor, Neta Mayfield, Minnie Mayfield, John Minton, Loretta McCoy, Rosa Lee McAbee, Mary Eva Proctor, Margaret Rash, Mary Lee Ritchie, Louise Rudder, Laura Nell Smith, Allie Ruth Steely, Eileen Steely, Lylah Thomas, Evie Winingar, C. H. Winingar, Beatrice Wood.



MRS. HAYES  
Sponsor

EFFIE BERRY  
President

RUTH SELBY  
Vice-President

GRACE OWENS  
Secretary

MARIE ADAMS  
Treasurer

VIRGINIA LINDSEY  
Reporter

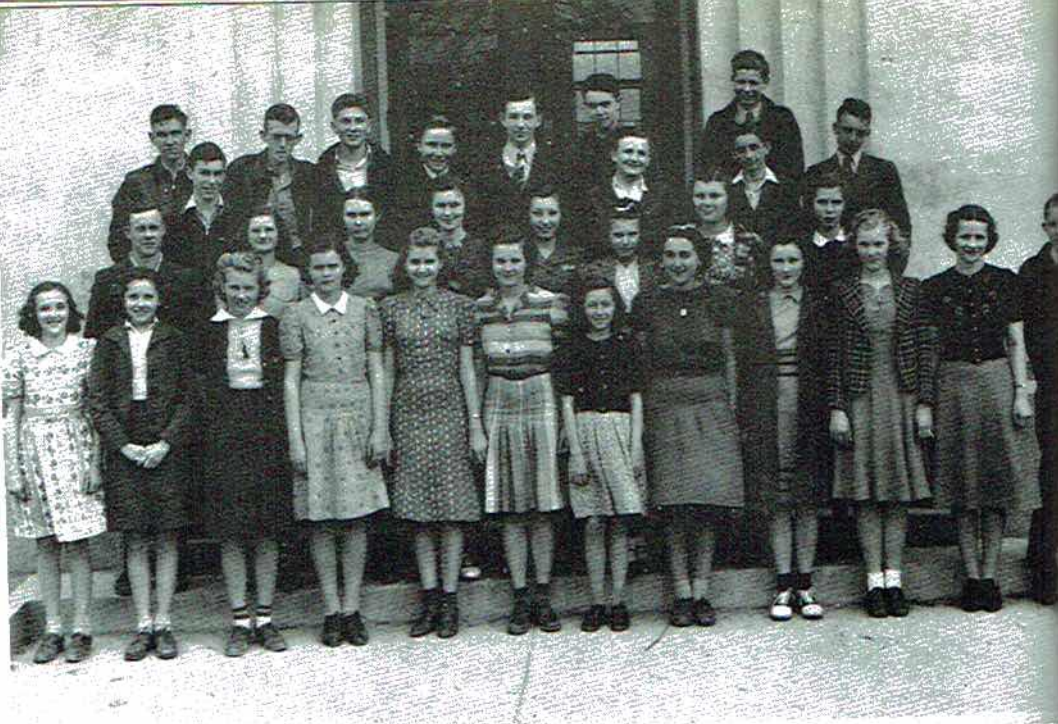


MRS. JONES  
Sponsor

EVELYN SANDERS  
President

HUGH BOYD CAMPBELL  
Vice-President

JERRY MEEK  
Secretary and Treasurer



MRS. LOVEJOY  
Sponsor

JAMES WALLACE  
President

WALTER COOK  
Secretary and Treasurer

## CITIZENSHIP CLUB

### ROLL

Veanilie Anderson, Ruth Beard, Betty Benson, Ernestine Carver, Audrey Childress, J. B. Clouse, Kathleen Clemons, Harry Frazier, Charles Giddens, Doyle Gist, Nina Gist, Mary Madge Gross, Billy Heath, Inez Law, Mildred Law, Moody Page, Erskine Parks, Cecil Patterson, Clarence Penny, Effie Sherrill, Vivian Stubbs, Mary Nell Sumner, Billy Mack Womack, Virginia Wood, Bryce Woosley.

Cha  
J. C. D  
W. H. L  
David P  
Tiffin, K

## FRIENDSHIP CLUB

### ROLL

Marie Adams, Rayford Ashmore, Kathrine Carter, Opal Clark, Billy Clemons, Rose Cotten, Ed Davis, Gaynel Dilbeck, Edna Evans, Gladys Flippo, Opal Gist, Bernice Holland, Marcus McClendon, Bettye John Morris, Rayford Owens, Billy Parker, Mabel Patterson, Annie Mary Prince, L. V. Shiflett, Garland Stewart.

Aug  
Grant, L  
Olinger,  
Jean W



MRS. DELLA McCRAY  
Sponsor

LAURA MAE CHAFFIN  
President

HORTON DEVERS  
Vice-President

BETTY PATTERSON  
Secretary and Treasurer



MISS LOVEJOY  
Sponsor

JAMES WALLACE  
President

WALTER COOK  
Secretary and Treasurer



## JUNIOR PHYSICAL EDUCATION CLUB

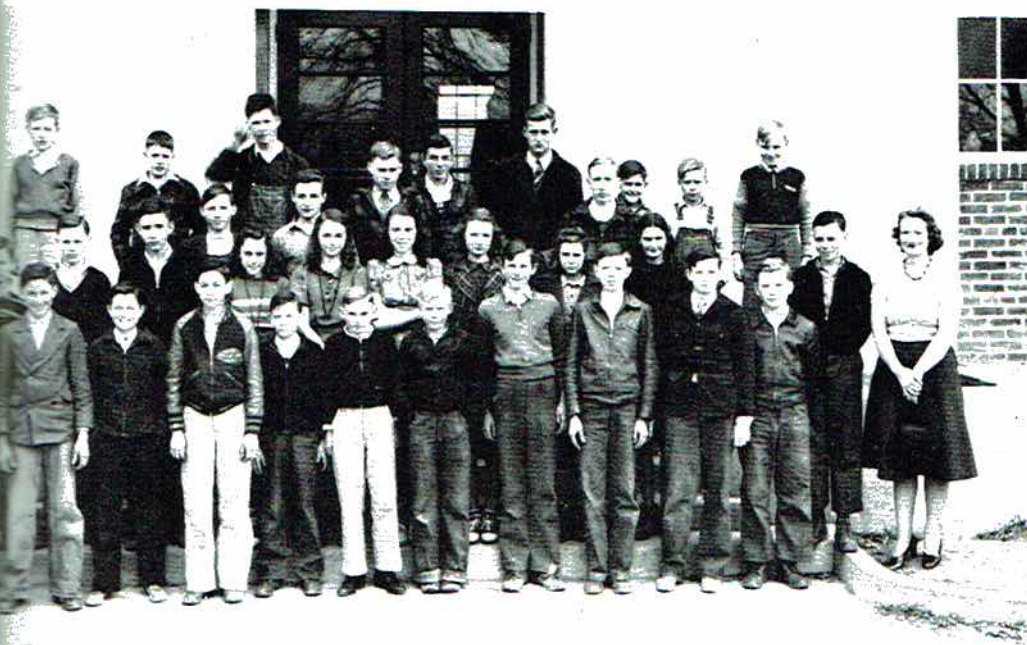
### ROLL

Charles Anderson, Medelyn Beaver, J. W. Berry, Garth Childress, Verlon Cowart, Creed Dawson, J. C. Dodson, Kathleen Duncan, Jack Gay, Una Faye Hawk, James Roy Johnson, Rayford Lathans, W. H. Lockard, Gordon Lockard, Proctor Mathews, J. W. Michaels, Reuben Miller, Milus Morris, Hulet Oden, David Parks, George Ricker, Boyd Sumner, Ruby Sumner, Katie Mae Sumner, Billy Talkington, Mary Ruth Tiffin, Kenneth Utter, Woodrow Wilhelm, Brooks Wilhelm, Quinton Wood.

## JUNIOR SCIENCE CLUB

### ROLL

Augusta Clemons, Mildred Darwin, Doris Elliott, Dorothy Evens, Anna Evans, Faye Evans, Anna Ruth Grant, Lois Hayes, Martha Henshaw, Beaulah Johns, Kathleen Luck, Nell Machen, Chloë Mickles, Pauline Olinger, Dorothy Parker, Audrey Pittman, Mary Nell Smart, Inez Smith, Bettye Jane Thomas, Lena Thomas, Jean Ward, Kathleen Wood.



MISS MANN  
Sponsor

MAZIE JOHNSON  
President

MARY TATE  
Secretary and Treasurer





Romeo and Two Juliets



Double Trouble

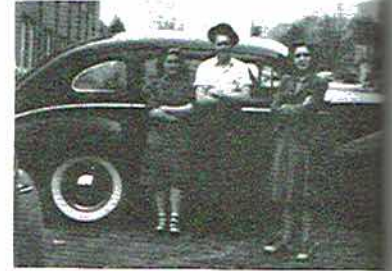


Inmates of J.C.H.S.



May Queen-'39

# snaps



Three's a Crowd



Believe it or Not



Love Joy??



The Merry-go-Round  
Broke Down ---  
What Wouldn't?



Honey -



Fishing for Suckers?



? ? ?



Alone?

So  
May  
Be  
As i



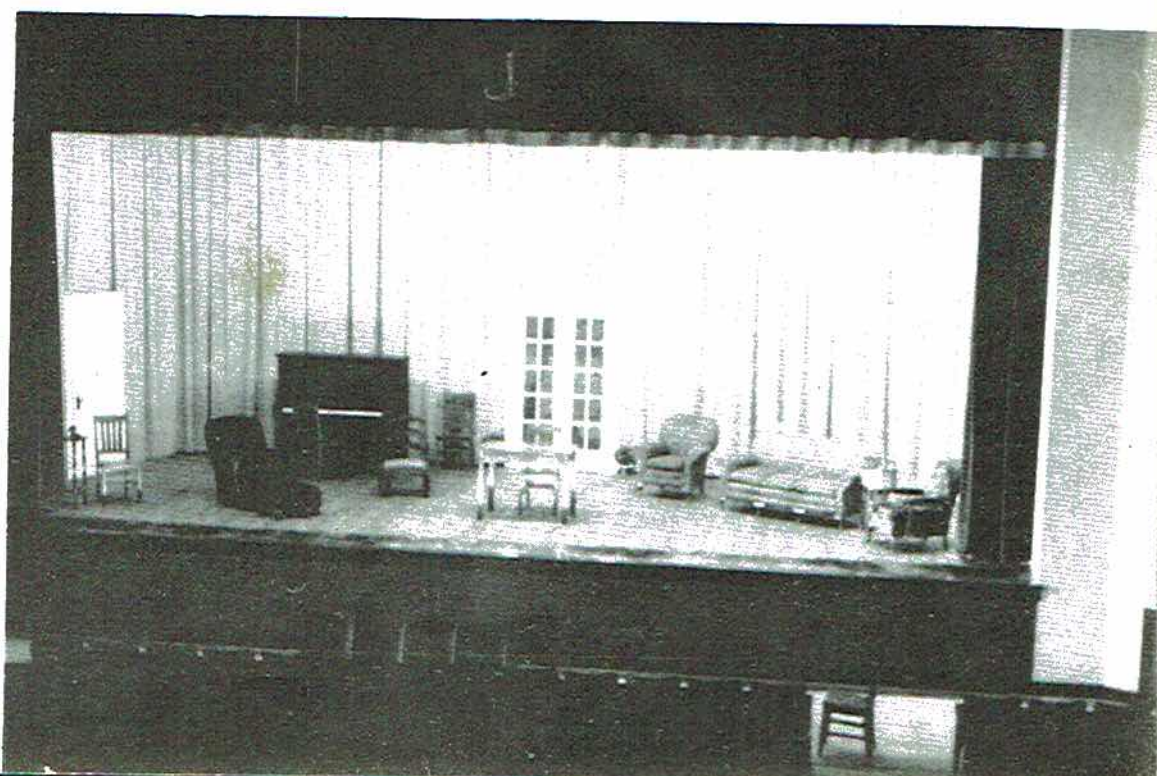
Chorus:

So farewell dear Alma Mater,  
May thy name we pray,  
Be revered ever pure and stainless,  
As it is today.



# ACTIVITIES

*REMINDER · 1940*







Sitting: Benson, Campbell, Miller, Wann.  
 Standing: Bryant, Keith, Collins, Selby, Johnson, McCrary.

### MAY DAY QUEEN AND COURT

SARA CAMPBELL . . . . . Queen  
 ELEANOR MILLER . . . . . Maid-of-Honor

#### ATTENDANTS

- Jane Benson
- Forestine Bryant
- Mildred Collins
- Elizabeth Johnson
- Lalia Keith
- Imogene McCrary
- Pauline Selby
- Faye Wann

Tru  
 Patrick  
 Sax  
 David M  
 Dru  
 Eunice B  
 Alto  
 Cla  
 Collins,  
 McCrary  
 Bas  
 Tro  
 Bar  
 Dru  
 MR.  
 Sp  
 ROBERT  
 Pre  
 ELIZABETH  
 Vice-





## BAND CLUB

### ROLL

**Trumpets:** Robert Wann, Herbert Roden, Ruth McCutcheon, H. P. Emmett, Elizabeth Johnson, Richard Patrick, Jack Simmons, Billy Carver, June Thomas, Brian Henshaw, Billy Bradford, Ben Kirby.

**Saxophones:** Opalea Sentell, Mary Evelyn Presley, Robert Bridges, Billie Madge Ward, Bobbie Griffith, David McCrary, Sara Campbell, Jean Snodgrass.

**Drums:** Jack Gayle, Frieda Smith, Sue Patrick, Hugh Sol Presley, Mary Ellen Thomas, Dorothy Roden, Eunice Beard.

**Altos:** Jim Kirby, Wiley Kennamer, Bob Thomas, G. H. Hollis.

**Clarinets:** Harold Nye, Frank Keown, Mary Burns Shook, Hugh Helms, Lila Jean Hodges, Mildred Collins, Earl Thomas, Shirley Dell Powell, Rozanne Cox, Mary Ellen Starnes, Reon Ambrester, Imogene McCrary, Jane Benson.

**Bass:** Howard Dawson, Edward Phillips, James Payne.

**Trombones:** Robert Sumner, John Ed Michaels, Ray Collins, Rodney Gentles, Harvey Helms.

**Baritone:** Johnny Shook, Jack Gay.

**Drum Majorette:** Billie Marie McClendon.

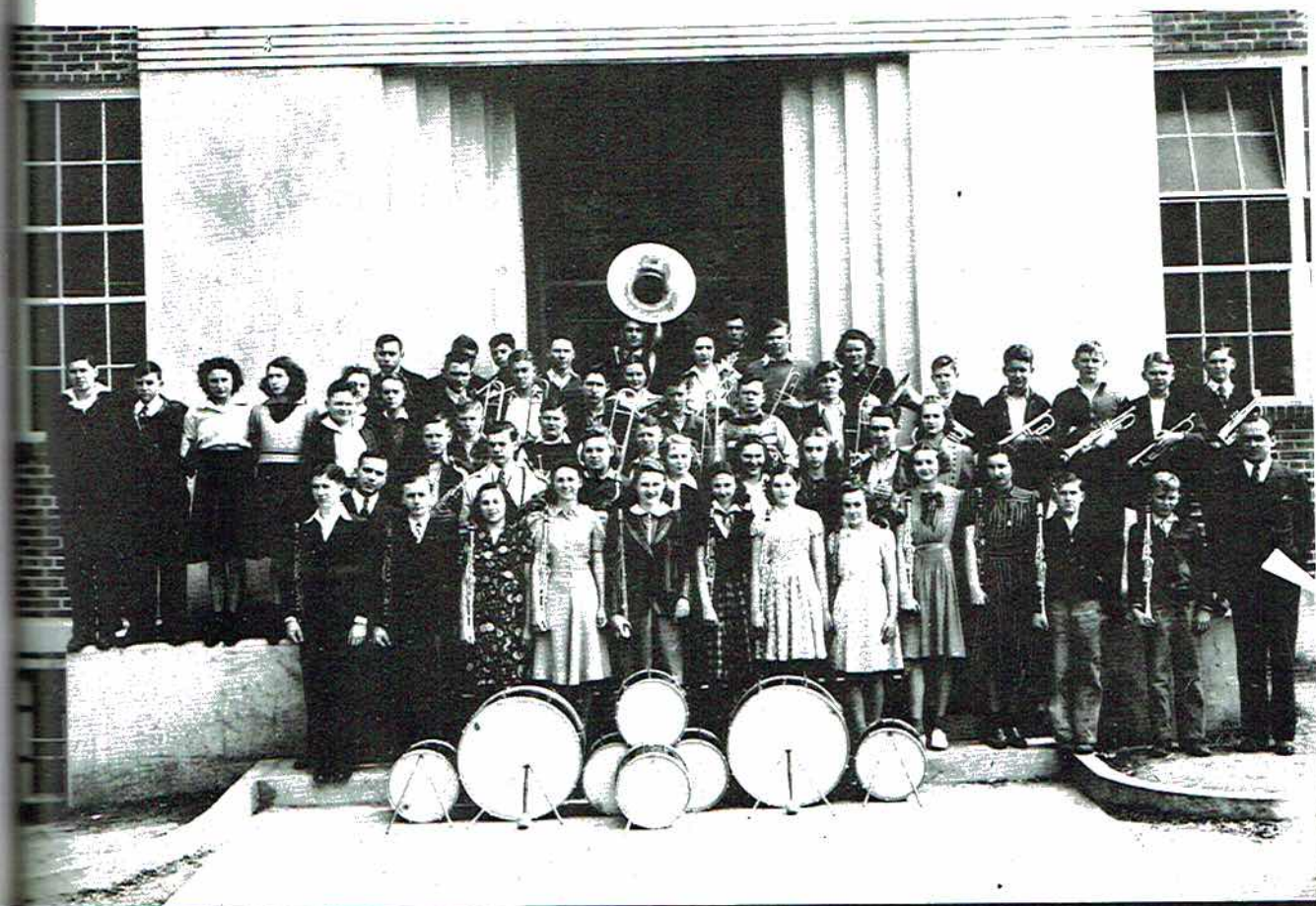
MR. FOLEY  
Sponsor

FRIEDA SMITH  
Secretary and Treasurer

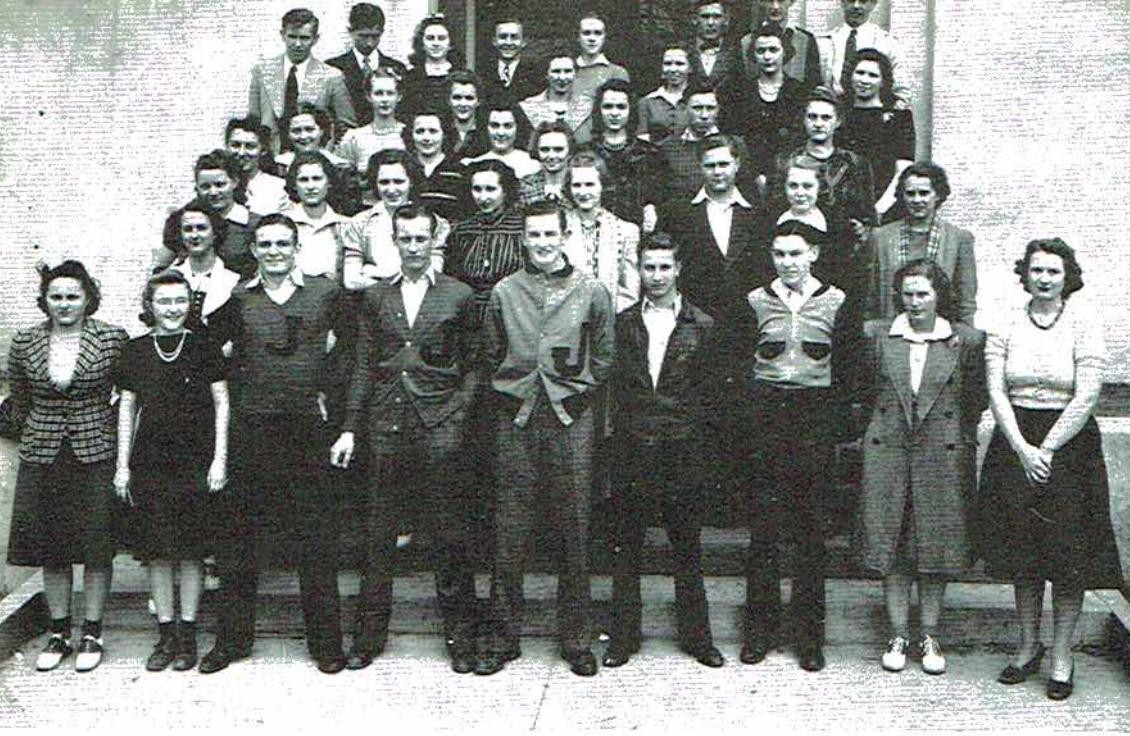
ROBERT BRIDGES  
President

MARY BURNS SHOOK  
Reporter

ELIZABETH JOHNSON  
Vice-President







## SENIOR GLEE CLUB

### ROLL

Jane Benson, Doris Bentley, Shirley Boyd, Jane Campbell, Annie Dee Carter, Elizabeth Dell Clopton, Opal Coffey, Virginia Downey, H. P. Emmett, Lavilla Ferguson, Charles Haggard, Louise Henshaw, Mildred Jenkins, Claude Jones, Stanley Jones, Elizabeth Johnson, Sara Kelly, Frank Keown, Imogene McCrary, Flora Nichols, Harold Nye, Sue Patrick, James Payne, Charles David Presley, Mary Evelyn Presley, John Price, Marie Ryan, Fred Sanders, Miriam Sellers, Mary Burns Shook, Sam Simmons, Frieda Smith, W. L. Smith, Jane Starkey, Winifred Swenson, Julia Maude Thomas, Kinyon Vinson, Faye Vann.

MISS LOVEJOY  
Sponsor

ELOISE GROSS  
President

HERBERT RODEN  
Vice-President

ELIZABETH JOHNSON  
Secretary

CLAUDE JONES  
Treasurer

## JUNIOR GLEE CLUB

### ROLL

Anna Bellomy, Virginia Bellomy, Pearl Bellomy, Ola Mae Brandon, Lucille Brandon, Veda Brandon, Elizabeth Bryant, Grace Bynum, Kathleen Clemmons, Eloise Dean, Juanita Flowers, Unice Hall, Lois Hayes, Una Faye Hauk, Billie Marie McClendon, Elizabeth Roberts, Dorothy Roden, Louise Rudder, Evelyn Sanders, Ruth Selby, Jean Snodgrass, Mary Ellen Starnes, Vivian Stubbs, Virginia Woods.

MISS LOVEJOY  
Sponsor



Ch  
Elizabeth  
Opal C  
Eloise G  
Morris, S  
Elizabeth





ELOISE GROSS  
President

HERBERT RODEN  
Vice-President

ELIZABETH JOHNSON  
Secretary

CLAUDE JONES  
Treasurer

## DRAMATIC CLUB

### ROLL

Charles Haggard, Dot Blevins, Anna Ruth Bullard, Helen Snodgrass, Bebe Jones, Herbert Roden, Elizabeth Dell Clopton, Frieda Smith, Sue Patrick, Shirley Boyd, Marie Ryan, Jane Benson, Kinyon Vinson, Opal Coffey, Virginia Downey, Sara Kelly, Miriam Sellers, Irene Gibbs, Lalia Keith, John Edward Johnson, Eloise Gross, Mildred Jenkins, J. D. Thomason, Nita Spivey, Sam Simmons, Mary Burns Shook, Earline Morris, Sara Campbell, Lavilla Ferguson, Mary Evelyn Presley, Jane Starkey, John Clopton, Helen Shelley, Elizabeth Johnson, L. V. Green, Opal Dean, Claude Jones, Stanley Jones, Billie Madge Word, H. P. Emmett.



# Reminder

# St



MARY BURNS SHOOK  
Editor-in-Chief

## EDITORIAL

MARY BURNS SHOOK	Editor-in-Chief
WILLIAM HUDDLESTON	Faculty Advisor
J. D. THOMASON	Assistant Editor
ELIZABETH JOHNSON	Activity Editor
MARY EVELYN PRESLEY	Activity Editor
ELIZABETH DELL CLOPTON	Class Editor
LALIA KEITH	Class Editor
CLAUDE JONES	Sports Editor
HERBERT RODEN	Club Editor
VIRGINIA DOWNEY	Club Editor
WINIFRED SWENSON	Arts Editor

JOHN CLOPTON  
STANLEY JOHNSON  
WILLIAM DEWITT  
JANE STARK  
LAVILLA FERRELL  
JOHN MILTON  
EDITH GREEN  
HORTON DEWITT

Top: Thomason, Keith, Jones, Johnson, Roden.

Bottom: Downey, Swenson, Clopton, Presley.

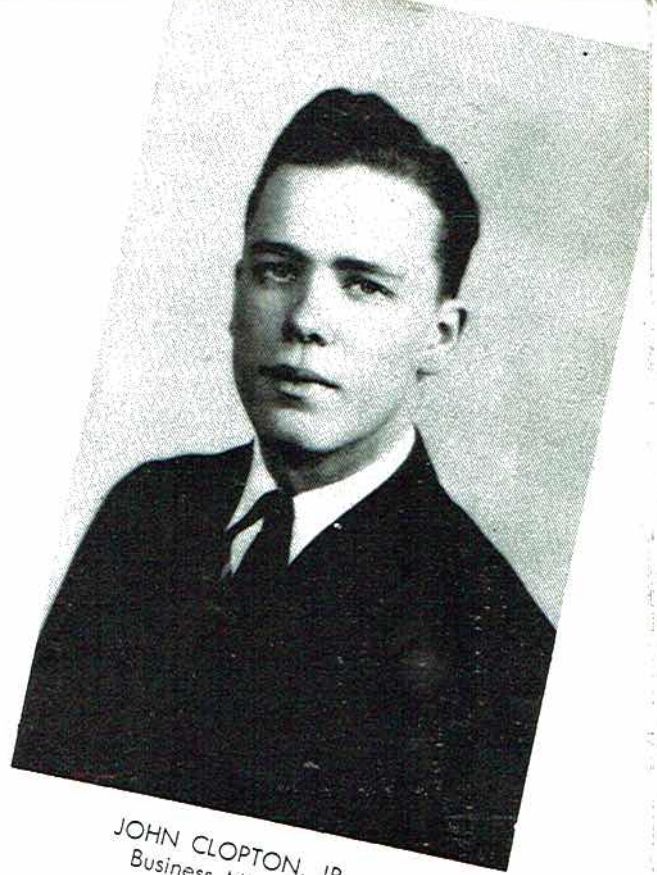




# Staff

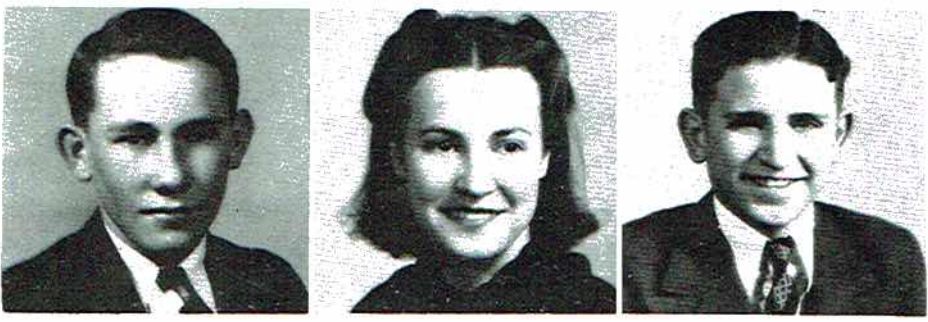
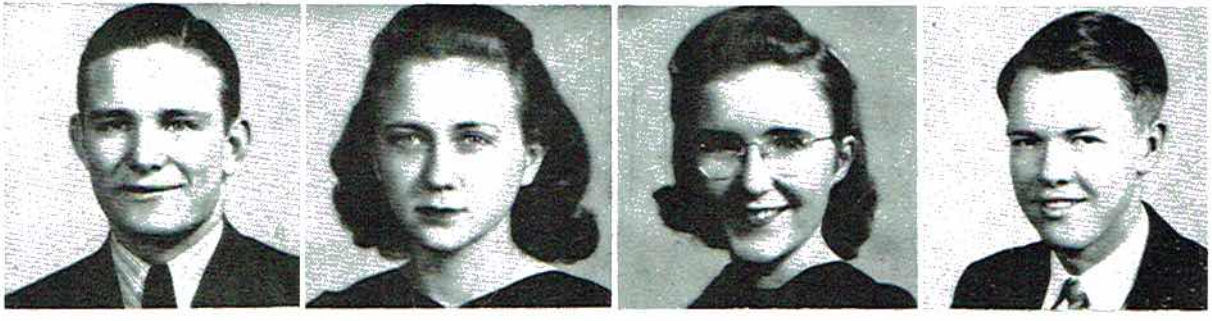
## BUSINESS

JOHN CLOPTON, JR.	Business Manager
STANLEY JONES	Collection Manager
WILLIAM DERRICK	Advertising Manager
JANE STARKEY	Business Assistant
LAVILLA FERGUSON	Business Assistant
JOHN MILTON STOCKTON	Business Assistant
EDITH GREEN	Business Assistant
HORTON DEVERS	Business Assistant



JOHN CLOPTON, JR.  
Business Manager

Top: Jones, Starkey, Ferguson, Derrick.  
Bottom: Stockton, Green, Devers.







Amazing Grace



E.A.T. Society



Enter the Ho

CLAUDE JOHNSON  
WIB GENTLE  
GUS SENTELL  
COACH WED



Covered Bridge



Swing High-Swing Low

# S n a p s



Queenie

A. B. Brand  
Bryant, Char  
Willard Hans  
Dub Phillips,  
Ed Swaim, K  
Wilbur Willia



Two of a Kind



W. P. A.



The Mrs.



Plow-Boys



Thinking? No!



High Stepping



Rah! Rah! Rah!



Friends For



## "J" CLUB

CLAUDE JONES                      President  
WIB GENTLE                      Vice-President  
GUS SENTELL                      Secretary and Treasurer  
COACH WEDGEWORTH                      Sponsor

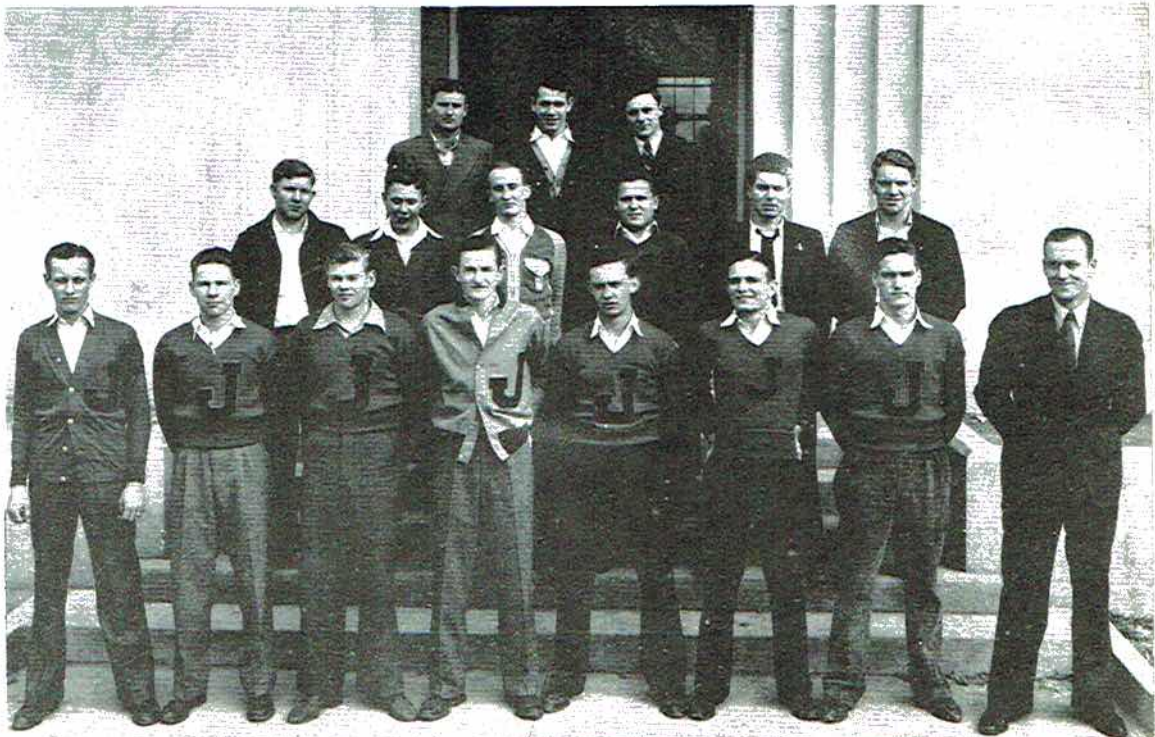
### ROLL

A. B. Brandon, Mozley Brannum, Kenneth Bryant, Charles Haggard, Pick Hansard, Willard Hansard, W. H. Hill, Stanley Jones, Dub Phillips, Herbert Roden, W. L. Smith, Ed Swaim, Kinyon Vinson, Robert Wann, Wilbur Williams.



# SPORTS

*REMINDER · 1940*





# UNDER THE

# AR



COACH WEDGEWORTH

Valley Head	*SEPTEMBER 22	0	J. C. H. S.	25
Bridgeport	*SEPTEMBER 29	0	J. C. H. S.	7
Gurley	*OCTOBER 6	0	J. C. H. S.	6
Guntersville	*OCTOBER 13	0	J. C. H. S.	20
Glencoe	*OCTOBER 20	6	J. C. H. S.	0
Fort Payne	*OCTOBER 27	6	J. C. H. S.	7
Albertsville	NOVEMBER 3	20	J. C. H. S.	13
Arab	NOVEMBER 10	0	J. C. H. S.	33
Cullman	NOVEMBER 19	19	J. C. H. S.	20
* Forfeit		51		131



KENNETH BRYANT  
"Bottle"  
Back  
Varsity, 1937-38-39  
Captain, 1939  
Weight, 165



CLAUDE JONES  
"Baker"  
Back  
Varsity, 1938-39  
Alternate Captain, 1939  
Weight, 148



ED SWAIM  
"Ed"  
Center  
Varsity, 1938  
Weight, 170



STANLEY JONES  
"Jesse"  
Back  
Varsity, 1938-39  
Weight, 150



A. B. BRANDON  
"A. B."  
Center  
Varsity, 1938-39  
Alt. Capt. Elect, 1940  
Weight, 160



HERBERT RODEN  
"Dusty"  
Back  
Varsity, 1939  
Weight, 150



CHARLES HAGGARD  
"Charles"  
End  
Varsity, 1939  
Weight, 170



GUS SENTELL  
"Gus"  
Guard  
Varsity, 1938-39  
Captain-Elect, 1940  
Weight, 160



WIBB GEN  
"Wibb"  
Tackle  
Varsity, 1939  
Weight, 170



WILBUR WILLIAMS  
"Ole Woman"  
Tackle  
Varsity, 1938-39  
Weight, 205



# ARCS



HURLEY PERRY  
"Hurley"  
Back  
Varsity, 1938-39  
Weight, 175



MOSE BRANNUM  
"Mose"  
Back  
Varsity, 1939  
Weight, 150



W. H. HILL  
"Dub"  
Varsity Manager, 1939



ED SWAIM  
"Ed"  
Center  
Varsity, 1938-39  
Weight, 175



KINYON VINSON  
"Kinyon"  
End  
Varsity, 1939  
Weight, 148



WUBB GENTLE  
"Wubb"  
Tackle  
Varsity, 1938-39  
Weight, 185



W. L. SMITH  
"Red"  
Tackle  
Varsity, 1938-39  
Weight, 170



DUB PHILLIPS  
"Dub"  
Guard  
Varsity, 1939  
Weight, 175



AND



COACH C



DUB PH  
"Du  
Gu  
Varsity, 1





# ON THE HARDWOOD



STANLEY JONES  
"Jesse"  
Guard  
Varsity, 1938-39-40



CLAUDE JONES  
"Baker"  
Guard  
Varsity, 1938-39-40



PICK HANSARD  
"Pick"  
Forward  
Varsity, 1938-39-40



COACH O'BRIEN

J. C. H. S.	30
J. C. H. S.	31
J. C. H. S.	24
J. C. H. S.	18
J. C. H. S.	33
J. C. H. S.	24
J. C. H. S.	21
J. C. H. S.	9
J. C. H. S.	6
J. C. H. S.	36
J. C. H. S.	41
J. C. H. S.	38

Rison	6
Attalla	7
Lexington	18
Eva	18
Joe Bradley	17
Douglas	23
Susan Moore	16
Mortimer Jordan	11
New Hope	10
Holly Pond	17
Douglas	10
Arab	22



OZELL WILSON  
"Red"  
Forward  
Varsity, 1939-40

J. C. H. S.	27
J. C. H. S.	26
J. C. H. S.	36
J. C. H. S.	14
J. C. H. S.	18
J. C. H. S.	23
J. C. H. S.	22
J. C. H. S.	29
J. C. H. S.	28
J. C. H. S.	31
J. C. H. S.	37
J. C. H. S.	18

Gurley	30
Attalla	16
Mortimer Jordan	24
Eva	24
Gurley	28
New Hope	19
Pisgah	21
Lexington	19
Geraldine	24
Pisgah	32
Arab	17
Geraldine	24



DUB PHILLIPS  
"Dub"  
Guard  
Varsity, 1938-39-40



WILLARD HANSARD  
"Mutt"  
Forward  
Varsity, 1938-39-40



GRANVILLE MARTIN  
"Tiger"  
Guard  
Varsity, 1939-40



LEBRON ROOKS  
"Lanky"  
Center  
Varsity, 1939-40



THE WHOLE HEARTED SUPPORT AND COOPERATION OF OUR  
ADVERTISERS MADE THE PUBLICATION OF "THE 1940  
REMINDER" POSSIBLE. YOUR PATRONAGE WILL  
BE APPRECIATED.

L. G. BALFOUR CO.  
BENSON & CHILDRESS  
BUTLER & KENAMER  
BOCANITA THEATRE  
BENSON MOTOR CO.  
CHILDREN'S SHOPPE  
CASH GRAIN CO.  
CITY CAFE  
CALDWELL'S  
COCA-COLA BOTTLING CO.  
P. W. CAMPBELL  
GREEN & HESS GARAGE  
GREEN CAB CO.  
HUNT'S 5 & 10c STORE  
HICKS TYPEWRITER CO.  
HILL GROCERY CO.  
J. O. LIPSCOMB CO.  
JORDAN & SKIDMORE  
J. C. JACOBS BANKING CO.  
JONES DRY GOODS CO.  
JACKSON COUNTY MOTORS CO.  
LAY & CO.  
LILY PURE ICE CREAM CO.  
MOTOR SALES CO.  
MACHEN'S MEAT MARKET  
W. A. MAY & GREEN  
FIRST NATIONAL BANK  
HARRIS KEEBLE

JACKSON PRIDE CAFE  
PAYNE DRUG CO.  
PALACE DRY CLEANERS  
PATRICK LUMBER CO.  
QUALITY STORE  
REED'S SUNDRIES  
RED HOT STORE  
RED HOT STORE, Jr.  
ROSSON SHOP  
RIVERVIEW FARM DAIRY  
RITZ THEATRE  
SNODGRASS GROCERY  
SCOTTSBORO WHOLESALE CO.  
SCOTTSBORO SERVICE STATION  
SCOTTSBORO ICE & COAL CO.  
SCOTTSBORO LAUNDRY  
SCOTTSBORO HARDWARE CO.  
W. BENTLY THOMAS  
VEDA'S FLOWER SHOP  
V. M. PROCTOR GROCERY  
VOGUE BEAUTY & HAT SHOP  
W. J. WALES  
WORD FURNITURE CO.  
WORD LUMBER CO.  
WORD MOTOR CO.  
WESTERN AUTO SUPPLY CO.  
HOUSE'S BARGAIN HOUSE  
HODGES DRUG STORE



FEEDS

SEEDS

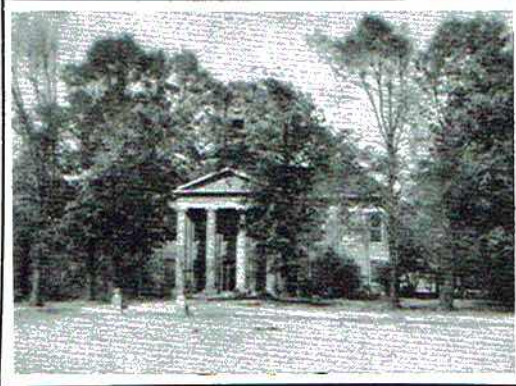
## CALDWELL'S CITY MEAT MARKET

"25 Years of Satisfactory Service"

STAPLE and FANCY  
GROCERIES

NATIVE and WESTERN  
MEATS

PHONE NO. 4



Compliments of

**HARRIS KEEBLE**

**SHOE SHOP**

EXPERT SHOE REPAIRING

RIDE WITH US

**GREEN CAB CO.**

TAXI and U-DRIVE IT  
Special Rates on Long Trips

Phone 272

Compliments of

**JORDAN & SKIDMORE**

Compliments of

**FIRST NATIONAL BANK**

Scottsboro, Alabama

THRIFT SHOULD BE ONE OF THE FIRST LESSONS LEARNED

Deposit with

**A Strong Bank Thoughtfully Managed**



Compliments of  
**SCOTTSBORO HARDWARE COMPANY**

Scottsboro, Alabama

SHERWIN-WILLIAMS PAINTS — JOHN DEERE and AVERY  
IMPLEMENTS — ENTERPRISE STOVES, RANGES AND  
HEATERS

GENERAL LINE OF BUILDER'S and SHELF HARDWARE

*"We Appreciate Your Business"*

PHONE 39

EAT AT

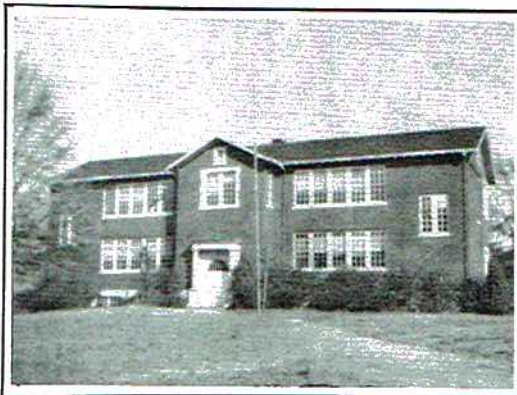
**CITY CAFE**

in

Scottsboro

Where Friends Meet

Mose Swaim, Proprietor



YEA JACKSON!

**HODGES DRUG STORE**

FOUNTAIN SERVICE

SCHOOL SUPPLIES

WRIGHT'S PHOTOGRAPHIC SERVICE

*"Where Service Meets You at the Door"*

PHONE 35



Compliments of

**GREEN & HESS GARAGE**

QUALITY PRODUCTS  
DEPENDABLE SERVICE

Scottsboro, Alabama

Phone 239

**JACKSON COUNTY  
MOTORS**

DODGE and PLYMOUTH CARS  
PARTS and SERVICE



at  
**GREEN & HESS  
GARAGE**

H. A. Meredith, Manager

Compliments of

**BOCANITA THEATRE**

*"Always a Good Show"*

Compliments of

**BUTLER & KENNAMER**

WHOLESALE GROCERS



**V. M. PROCTOR GROCERY**

STAPLE and FANCY GROCERIES

*"We Lead in Quality and Price"*

Phone 193

D R I N K

**Coca-Cola**

IN BOTTLES

EVERY BOTTLE STERILIZED



Compliments of

**HUNT'S 5 & 10c STORE**

QUALITY MERCHANDISE  
REASONABLY PRICED

*"The Home Owned Store"*

**BENSON & CHILDRESS**

Wholesale Distributors of

HARDWARE — IMPLEMENTS

TRACTORS — TRACTOR

IMPLEMENTS

ELECTRICAL APPLIANCES

*"We Supply Every Farm Need"*

COMPLIMENTS OF

**J. C. JACOBS BANKING COMPANY, Inc.**

SCOTTSBORO, ALABAMA

Member Federal Deposit Insurance Corporation

**BENSON MOTOR COMPANY**

FORD — MERCURY — LINCOLN ZEPHYR

FORD TRUCKS — USED CARS

SALES

SERVICE

Expert Repairing by Trained Mechanics

*"Ford For Forty"*



## VEDA'S FLOWER SHOP

We Telegraph Flowers Anywhere

CUT FLOWERS — GIFTS

POTTED PLANTS

## REID'S SUNDRIES

MEDICINES — GIFT GOODS

COSMETICS

FOUNTAIN DELICACIES

*"Where the Crowds Go"*

## PATRICK LUMBER CO.

FLOORING

CEILING

SIDING

ROOFING

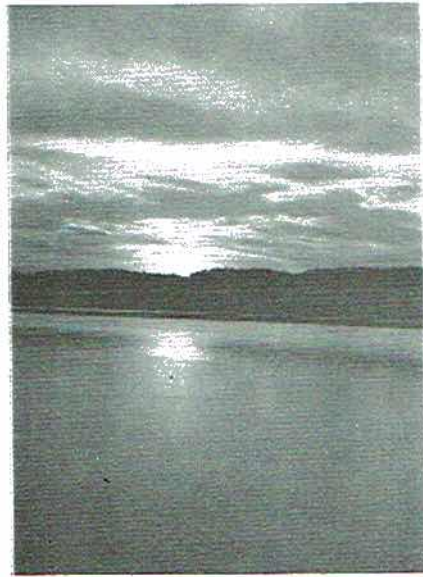
LIME

PAINTS

VARNISHES

CEMENTS

Phone 861



## THE ROSSON SHOP

LADIES' READY-TO-WEAR

GIFTS

MILLINERY

Congratulations

THE CLASS OF 1940

**JONES DRY GOODS CO.**



**W. J. WALES**

JEWELER and WATCHMAKER

SILVER WATCHES

CRYSTAL DIAMONDS

*"The Dependable Store"*

Compliments of

**PALACE DRY CLEANERS**

PHONE 12

*"We Clean Everything but the Kids"*

Horace Armstrong, Prop.



**CASH GRAIN CO.**

Complete Line of

JAZZ FEEDS

Seeds From Reliable Houses

Herman Brandon, Manager

Phone 295

**RED HOT STORE**

*"110 in the Shade"*

SEWELL SUITS, DeWITT'S SHOES

DRY GOODS — CLOTHING FOR  
THE ENTIRE FAMILY

Scottsboro, Ala.

I. T. Derrick, Proprietor  
Porter Derrick, Manager

Compliments of

**P. W. CAMPBELL**

Publisher

THE SENTINEL

Every Tuesday

PROGRESSIVE AGE

Every Thursday

Compliments of

**LAY & COMPANY**

**5 & 10c STORE**

NOVELTY GOODS OF ALL KINDS



SHOP AT  
**HOUSE'S  
BARGAIN HOUSE**  
IT PAYS

Compliments of  
**W. BENTLEY THOMAS**  
TAX ASSESSOR  
JACKSON COUNTY

Compliments of  
**LILY PURE ICE CREAM**  
*"More People in Alabama ENJOY Lily Pure Ice Cream Than Any Other Kind" 1*  
Manufactured by  
**LILY PURE ICE CREAM CO.**  
Gadsden, Alabama

Compliments of  
**MACHEN'S  
MEAT MARKET**  
CHOICE STEAKS  
NATIVE and WESTERN  
GROCERIES  
STAPLE AND FANCY

**PAYNE DRUG STORE**  
FOUNTAIN SERVICE — GIFTS  
COSMETICS  
*Prescriptions Filled Expertly*  
Phone 40

Compliments of  
**M. F. HICKS TYPEWRITER COMPANY**  
*"The House Behind the Product"*  
EXCLUSIVE AGENCY FOR ROYAL TYPEWRITER  
A. L. Bridgman, Representative  
Chattanooga, Tenn.  
*"Jackson High Uses The ROYAL"*



Compliments of

**W. A. MAY & GREEN**

*"Thirty-five Years of Continuous Service"*

FOOTBALL, BASKETBALL, BASEBALL, GOLF, TENNIS, AND OTHER  
ATHLETIC SUPPLIES  
Montgomery, Alabama

Compliments of

**W. R. WORD**

Furniture and Funeral Director

DAY PHONE 76

NIGHT PHONE 117

**L. G. BALFOUR COMPANY**

Attleboro, Mass.

Foremost in the Manufacture of

CLASS RINGS AND PINS

COMMENCEMENT INVITATIONS

DIPLOMAS—PERSONAL CARDS

CUPS—MEDALS—TROPHIES

Jeweler to the Senior Class of Jackson County High School

Representative—E. G. Fitzgerald

108½ No. 22nd Street

Birmingham, Alabama



## MOTOR SALES CO.

GOOD GULF GAS and OIL  
WASHING and GREASING  
CLEAN REST ROOMS

Phone 162

Edd Kenamer, Proprietor

## WESTERN AUTO ASSOCIATE STORE

TIRES — RADIOS — AUTO PARTS

*"Everything for the Automobile"*

HOME OWNED

J. M. Devers, Manager

COMPLIMENTS OF

# SCOTTSBORO WHOLESALE COMPANY

YOUR LOCAL JOBBER

PHONE 133

Compliments of

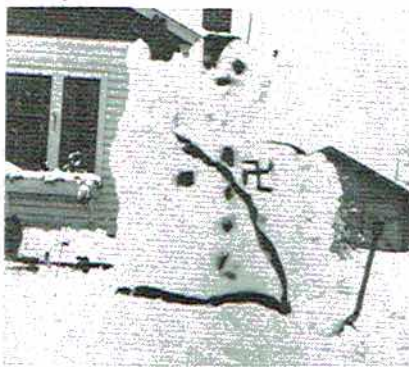
## WORD MOTOR COMPANY

CHEVROLET and OLDSMOBILE

SALES and SERVICE

GOODYEAR TIRES

PHILCO RADIOS





**SCOTTSBORO  
SERVICE STATION**

PUROL OIL PRODUCTS  
REPAIRING — WASHING  
GREASING — ACCESSORIES

Hal McKelvy, Prop.

Phone 20

Compliments of

**JACKSON PRIDE CAFE**

BARBECUE A SPECIALTY

Some Orders Free Every Day  
You May Be Lucky

Scottsboro's Newest Cafe

Compliments of

*J. O. Lipscomb*  
*Seeds and Feeds*

Scottsboro, Alabama

Phone 57

Compliments of

**CHILDREN'S SHOPPE**

LADIES and CHILDREN'S  
READY-TO-WEAR

Scottsboro, Alabama

Compliments of

**W. J. WORD LUMBER CO.**

BUILDERS and CONTRACTORS  
PAINTS, VARNISHES, CEMENT,  
BUILDERS' HARDWARE

Scottsboro, Alabama

Compliments of

**SNODGRASS  
GROCERY STORE**

GROCERIES and FRESH MEATS

J. D. Snodgrass, Manager

Phone 68

**RED HOT STORE, Jr.**

110½ in the Shade

*"It Pleases Us To Please You"*

Waco Derrick, Manager

Compliments of

**SCOTTSBORO  
ICE & COAL CO.**

PHONE 168

Scottsboro, Alabama



Compliments of

**SCOTTSBORO LAUNDRY**

QUALITY DRY CLEANING

and

HAT BLOCKING

Phone 91

Compliments of

**RIVERVIEW FARM  
DAIRY**

GRADE A RAW MILK

Phone 179-3

Compliments of

— Y O U R —

**RITZ THEATRE**

Scottsboro

HIGH FIDELITY SOUND — COMFORTABLE SEATS

GOOD PICTURES

ROBERT WORD, Owner



You Can Keep in Style

by Patronizing

**THE VOGUE  
BEAUTY & HAT SHOP**

in Hotel Scottsboro

Phone 123

IN EVERY TOWN  
ONE STORE STANDS OUT  
IN SCOTTSBORO

IT'S

**THE QUALITY STORE**

Compliments of

**HILL GROCERY CO.**

"HOME OF QUALITY FOODS"