

Gray's Chapel School

Location: S13/T1/R4E

Funds: \$130

School District: 78

Teacher in 1923: Summer Term

Trustee in 1923: N. A. Simms, Charles Fanning, and James A. Hinshaw

Teacher in 1939: William Garner

1908-1909 George Vandiver, 3 months at \$43

1918-1919 No Record

1923-1924 Ida Taylor, 3 months at \$60

Consolidated with Freedom

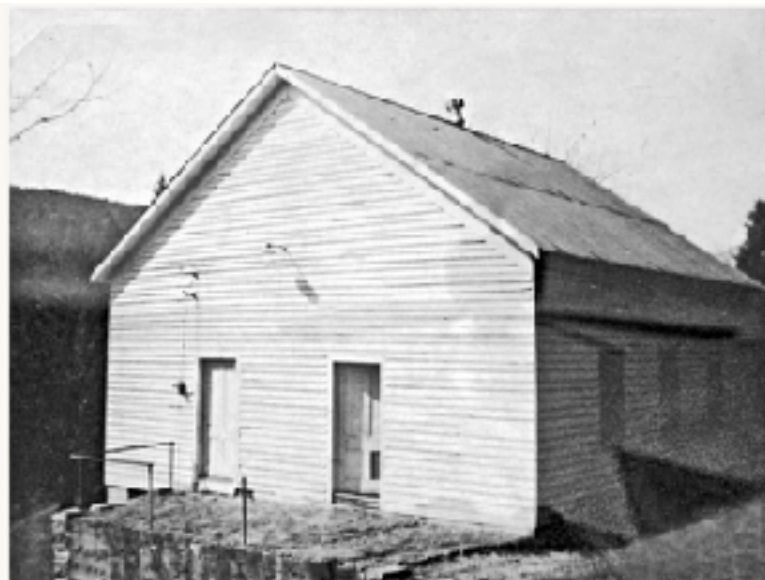
Jan 23, 1896 SC: "Miss Annie Jenkins, of Francisco, has been engaged to teach the school at Gray's Chapel."

Jul 23, 1896 SC: "Miss Paralee Jarnagin has a good school at Gray's Chapel."

Jul 8, 1897 SC: "Miss Barbie Collins will teach our school this year."

Jul 30, 1935 PA: "Curtis Green is teaching school at Gray's Chapel."

Gray's Chapel Methodist Church was established in 1884 with a gift of 2 acres of land from O. M. and Elizabeth Gray deeded to the trustees of the church B. T. Sims and E. J. Sisk. The church began with 16 members and Rev. D. T. Dye as pastor. Services were held in the original building until 1956 when a new church was erected by members using parts of the original building. The land [for the new church] was purchased from A. C. and Alice (Dot) Sisk. Present membership of this church is 46 members."



**Gray's Chapel Methodist Church
Established 1884**

A photograph of the original Gray's Chapel Church that hangs on the wall of the new church, now a community center. Photograph by James Parsons taken of the photograph inside the new church, 22 July 2019

3-26-2000

Gray Chapel Methodist Church was established
in 1884 with a gift of 3 acres ~~from~~ of land
from O.M. & Elizabeth Gray deeded to the
trustees of the church B.J. Sims and E.B. Sims
The church began with 16 members & Rev. D.J. Dye
as pastor. Services were held in the original
Building until 1956 when a new church
was erected by the members using parts of
the original Building. The land was
purchased from A.C. & Alice (Dot) Sims
present membership of the church is 46 members

Alma Joyce (Sweet) Garrett Putman's note about the history of the "old" Gray's Chapel
Church