

Champion School

Location: S15/T1/R6E

Funds: \$124

District: 83

1908-1909 H. B. Abbott, 4 months at \$40

Abbie Allison, 4 months at \$30

1918-1919 Not Listed

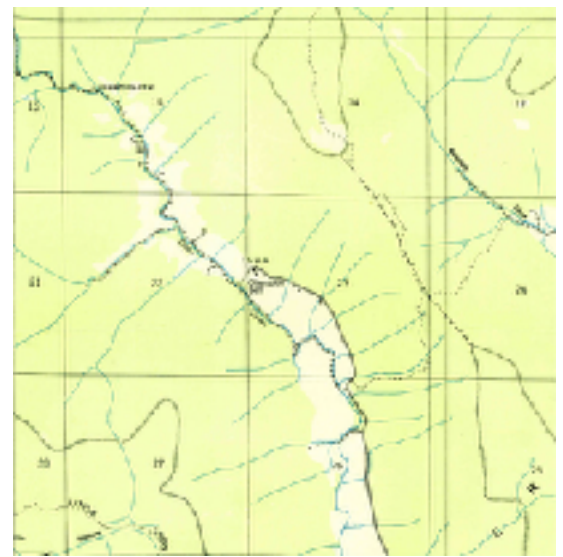
1923-1924 Mae Thomas, 3 months at \$60

Consolidated with Cave Spring

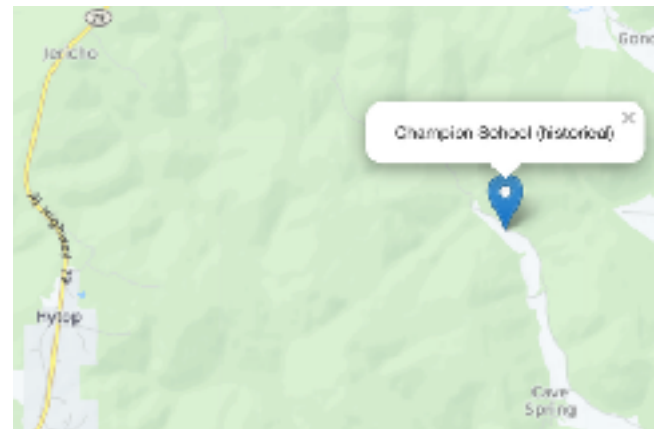
Teacher in 1923: summer Term, no teacher listed

Trustees in 1923: D. C. Hicks

Teacher in 1939: None Defined



Aug 2, 1828 PA: 3 mil tax advertised. Defeated.



NOTICE
Notice is hereby given that a special election will be held in
Champion District No. 83,
at **School House**
Jackson County, Alabama, on the 26th day of July, 1928, for the purpose of determining whether or not a special tax shall be levied and collected annually, at the rate of 30 cents on each one hundred dollars worth of taxable property in
Champion District No. 83,
in said county, and to be continued for a period of two years from September 30, 1928, the same to be for the support of the public schools within said district. The boundaries of said district are as follows:
Beginning at NW corner of section 5, Tp 1, R 6; thence east 3 miles; thence south 2 miles; thence east 1 mile; thence south 1 mile; thence east 1 mile; thence south 1 mile; west 4 miles; thence north 1 mile; thence west 1 mile; thence north 3 miles to point of beginning. Said district contains sections 3, 4, 5, 8, 9, 10, 14, 15, 16, 17, 21, 22, 23, and 24, all in Tp 1, R 6, Jackson County, Ala.
The following officers are appointed to hold said election:
C. C. Allen, J. W. Champion, Jack A. Hicks, ins; W. L. Champion, R. O. R. S. Skelton, W. W. Trice, W. H. Cox, Raymond Bradford, Members, Board of Commissioners, Jackson County, Ala., M. C. Thomas, Sheriff of Jackson County, Ala.